



SLOVENSKI STANDARD
kSIST FprEN 13310:2015
01-marec-2015

Kuhinjska korita - Funkcionalne zahteve in preskusne metode

Kitchen sinks - Functional requirements and test methods

Küchenspülen - Funktionsanforderungen und Prüfverfahren

Eviers de cuisine - Prescriptions fonctionnelles et méthodes d'essai

Ta slovenski standard je istoveten z: FprEN 13310

ICS:

97.040.10 Kuhinjsko pohištvo Kitchen furniture

kSIST FprEN 13310:2015

en,fr,de

EUROPEAN STANDARD
NORME EUROPÉENNE
EUROPÄISCHE NORM

FINAL DRAFT
FprEN 13310

December 2014

ICS 97.040.10

Will supersede EN 13310:2003

English Version

Kitchen sinks - Functional requirements and test methods

Eviers de cuisine - Prescriptions fonctionnelles et méthodes
d'essai

Küchenspülen - Funktionsanforderungen und Prüfverfahren

This draft European Standard is submitted to CEN members for unique acceptance procedure. It has been drawn up by the Technical Committee CEN/TC 163.

If this draft becomes a European Standard, CEN members are bound to comply with the CEN/CENELEC Internal Regulations which stipulate the conditions for giving this European Standard the status of a national standard without any alteration.

This draft European Standard was established by CEN in three official versions (English, French, German). A version in any other language made by translation under the responsibility of a CEN member into its own language and notified to the CEN-CENELEC Management Centre has the same status as the official versions.

CEN members are the national standards bodies of Austria, Belgium, Bulgaria, Croatia, Cyprus, Czech Republic, Denmark, Estonia, Finland, Former Yugoslav Republic of Macedonia, France, Germany, Greece, Hungary, Iceland, Ireland, Italy, Latvia, Lithuania, Luxembourg, Malta, Netherlands, Norway, Poland, Portugal, Romania, Slovakia, Slovenia, Spain, Sweden, Switzerland, Turkey and United Kingdom.

Recipients of this draft are invited to submit, with their comments, notification of any relevant patent rights of which they are aware and to provide supporting documentation.

Warning : This document is not a European Standard. It is distributed for review and comments. It is subject to change without notice and shall not be referred to as a European Standard.



EUROPEAN COMMITTEE FOR STANDARDIZATION
COMITÉ EUROPÉEN DE NORMALISATION
EUROPÄISCHES KOMITEE FÜR NORMUNG

CEN-CENELEC Management Centre: Avenue Marnix 17, B-1000 Brussels

Contents

Page

Foreword.....	4
1 Scope	5
2 Normative references	5
3 Terms and definitions	5
4 Requirements	8
4.1 General.....	8
4.2 Connecting dimensions	8
4.3 Draining of water.....	8
4.4 Resistance to dry heat	9
4.5 Resistance to temperature changes	9
4.6 Resistance against chemicals and staining agents	9
4.7 Surface stability	9
4.7.1 Resistance to scratching	9
4.7.2 Resistance to abrasion	9
4.8 Load stability.....	9
4.9 Flow rate of the overflow	10
4.10 Durability	10
5 Test methods.....	10
5.1 General.....	10
5.2 Draining of water.....	10
5.3 Resistance to dry heat	10
5.3.1 Test apparatus and chemicals	10
5.3.2 Procedure	11
5.3.3 Test results	11
5.4 Resistance to temperature changes	11
5.4.1 Test apparatus	11
5.4.2 Procedure	12
5.4.3 Test results	12
5.5 Resistance against chemicals and straining agents	13
5.5.1 Test apparatus and chemicals	13
5.5.2 Test specimens	15
5.5.3 Procedure	15
5.5.4 Expression of results	15
5.6 Resistance to scratching	16
5.6.1 Test apparatus	16
5.6.2 Test specimen	16
5.6.3 Procedure	18
5.7 Resistance to abrasion	18
5.7.1 Principle	18
5.7.2 Test apparatus and materials	18
5.7.3 Test specimens	18
5.7.4 Procedure	19
5.7.5 Expression of results	19
5.8 Load stability.....	19
5.9 Determination of the flow rate of overflow.....	20
6 Dangerous substances	20
7 Marking	20
8 Assessment and verification of constancy of performance – AVCP	21
8.1 General.....	21

8.2	Type testing	22
8.2.1	General	22
8.2.2	Test samples, testing and compliance criteria	22
8.3	Factory production control (FPC)	23
8.3.1	General	23
8.3.2	Equipment	23
8.3.3	Raw materials and components	24
8.3.4	Product testing and evaluation	24
8.3.5	Non-complying products	24
8.3.6	Corrective action	24
Annex A	(informative) Care and use of kitchen sinks	25
Annex ZA	(informative) Clauses of this European Standard addressing the provisions of the EU Construction Products Regulation	26
ZA.1	Scope and relevant characteristics	26
ZA.2	Procedure for assessment and verification of constancy of performance (AVCP) of kitchen sinks	27
ZA.2.1	System of AVCP	27
ZA.2.2	Declaration of performance (DoP)	27
ZA.3	CE marking and labelling	32
Bibliography	34

Foreword

This document (FprEN 13310:2014) has been prepared by Technical Committee CEN/TC 163 “Sanitary appliances”, the secretariat of which is held by UNI.

This document is currently submitted to the Unique Acceptance Procedure.

This document will supersede EN 13310:2003.

This document has been prepared under a mandate given to CEN by the European Commission and the European Free Trade Association, and supports essential requirements of the EU Construction Products Regulation.

For relationship with EU Construction Products Regulation, see informative Annex ZA, which is an integral part of this document.

Since the latest version of EN 13310, the most significant technical changes are the following:

- a) introduction of the term “product type”;
- b) introduction of the clause “Dangerous substances”;
- c) modification in the test materials and apparatus for the testing of the resistance to abrasion;
- d) modification of marking of products;
- e) replacement of the clause “Evaluation of conformity” by the clause “Assessment and verification of constancy of performance – AVCP” and replacement of Annex ZA by a new one in accordance with provisions of Regulation 305/2011;
- f) modifications in the Normative References and the Bibliography.

1 Scope

This document specifies the functional requirements of and test methods for kitchen sinks for domestic purposes, which ensure that the product, when installed in accordance with the manufacturers' instructions, gives satisfactory performance.

NOTE 1 For the purposes of this standard the term “domestic purposes” includes use in hotels, accommodation for students, hospitals and similar buildings.

This document does not specify aesthetic requirements and the overall dimensions of kitchen sinks.

It does not apply to industrial kitchen sinks.

NOTE 2 All drawings are examples only; other forms are permissible.

2 Normative references

The following documents, in whole or in part, are normatively referenced in this document and are indispensable for its application. For dated references, only the edition cited applies. For undated references, the latest edition of the referenced document (including any amendments) applies.

EN 695, *Kitchen sinks — Connecting dimensions*

EN ISO 6506-1, *Metallic materials — Brinell hardness test — Part 1: Test method (ISO 6506-1)*

ISO 4211-3, *Furniture — Tests for surface finishes — Part 3: Assessment of resistance to dry heat*

ISO 9352, *Plastics — Determination of resistance to wear by abrasive wheels*

3 Terms and definitions

For the purposes of this document, the following terms and definitions apply.

3.1

kitchen sink

bowl or group of bowls with (a) waste hole(s) and, if applicable, tap hole(s) and overflow(s), with or without draining areas, standing alone, integrated with, or assembled with a worktop or assembled into a purpose-built kitchen, intended for the preparation of foodstuffs, the washing of dishes and the discharge of domestic waste water

3.1.1

wall-hung sink

sink which is fixed directly to the wall without a base unit

Note 1 to entry: See Figure 1:

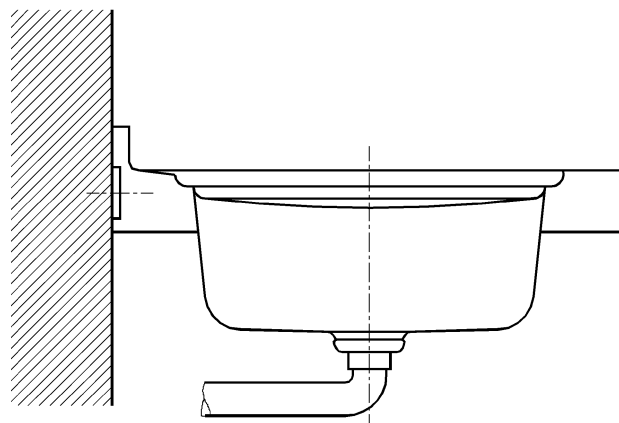


Figure 1 — Wall-hung sink

3.1.2

sit-on sink

sink which is mounted on top of a suitable base unit

Note 1 to entry: See Figure 2:

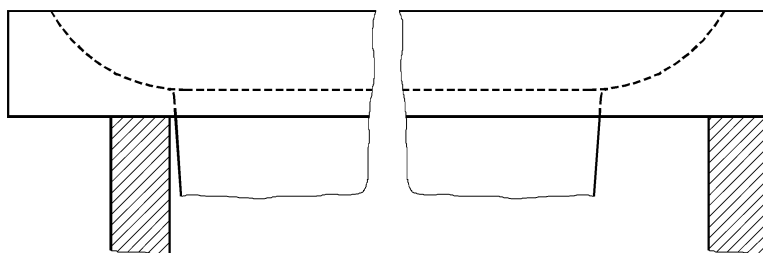


Figure 2 — Sit-on sink

3.1.3

inset sink

sink which is set into a kitchen work top from above, with the rim resting on the work top

Note 1 to entry: See Figure 3:

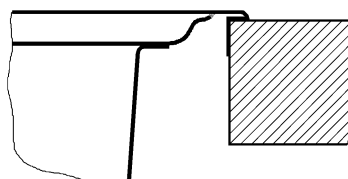


Figure 3 — Inset sink

3.1.4

flush-sit sink

sink which is set into a kitchen work top with the rim flush with, or within the thickness of the work top

Note 1 to entry: See Figure 4: