



SLOVENSKI STANDARD

kSIST FprEN ISO 643:2015

01-junij-2015

Jekla - Mikrografsko ugotavljanje navidezne velikosti kristalnih zrn (ISO/FDIS 643:2015)

Steel - Micrographic determination of the apparent grain size (ISO/FDIS 643:2015)

Acier - Détermination micrographique de la grosseur de grain apparente (ISO/FDIS 643:2015)

STANDARD PREVIEW
(standards.iteh.ai)

Ta slovenski standard je istoveten z: FprEN ISO 643

kSIST FprEN ISO 643:2015
<https://standards.iteh.ai/catalog/standards/sist/9148ae3e-81d5-48d9-81c2-411b01aea17c/ksist-fpr-en-iso-643-2015>

ICS:

77.040.99	Druge metode za preskušanje kovin	Other methods of testing of metals
77.080.20	Jekla	Steels

kSIST FprEN ISO 643:2015

en

iTeh STANDARD PREVIEW
(standards.iteh.ai)

[kSIST FprEN ISO 643:2015](https://standards.iteh.ai/catalog/standards/sist/9148ae3e-81d5-48d9-81c2-411b01aea17c/ksist-fpren-iso-643-2015)

<https://standards.iteh.ai/catalog/standards/sist/9148ae3e-81d5-48d9-81c2-411b01aea17c/ksist-fpren-iso-643-2015>

FINAL
DRAFTINTERNATIONAL
STANDARDISO/FDIS
643

ISO/TC 17/SC 7

Secretariat: AFNOR

Voting begins on:
2015-04-02Voting terminates on:
2015-06-02

**Steel — Micrographic determination
of the apparent grain size***Acier — Détermination micrographique de la grosseur de grain
apparente***iTeh STANDARD PREVIEW
(standards.iteh.ai)**[kSIST FprEN ISO 643:2015](https://standards.iteh.ai/catalog/standards/sist/9148ae3e-81d5-48d9-81c2-411b01aea17c/ksist-fpren-iso-643-2015)<https://standards.iteh.ai/catalog/standards/sist/9148ae3e-81d5-48d9-81c2-411b01aea17c/ksist-fpren-iso-643-2015>**Please see the administrative notes on page iii**

RECIPIENTS OF THIS DRAFT ARE INVITED TO SUBMIT, WITH THEIR COMMENTS, NOTIFICATION OF ANY RELEVANT PATENT RIGHTS OF WHICH THEY ARE AWARE AND TO PROVIDE SUPPORTING DOCUMENTATION.

IN ADDITION TO THEIR EVALUATION AS BEING ACCEPTABLE FOR INDUSTRIAL, TECHNOLOGICAL, COMMERCIAL AND USER PURPOSES, DRAFT INTERNATIONAL STANDARDS MAY ON OCCASION HAVE TO BE CONSIDERED IN THE LIGHT OF THEIR POTENTIAL TO BECOME STANDARDS TO WHICH REFERENCE MAY BE MADE IN NATIONAL REGULATIONS.

Reference number
ISO/FDIS 643:2015(E)

iTeh STANDARD PREVIEW (standards.iteh.ai)

[kSIST FprEN ISO 643:2015](https://standards.iteh.ai/catalog/standards/sist/9148ae3e-81d5-48d9-81c2-411b01aea17c/ksist-fpren-iso-643-2015)

<https://standards.iteh.ai/catalog/standards/sist/9148ae3e-81d5-48d9-81c2-411b01aea17c/ksist-fpren-iso-643-2015>



COPYRIGHT PROTECTED DOCUMENT

© ISO 2015

All rights reserved. Unless otherwise specified, no part of this publication may be reproduced or utilized otherwise in any form or by any means, electronic or mechanical, including photocopying, or posting on the internet or an intranet, without prior written permission. Permission can be requested from either ISO at the address below or ISO's member body in the country of the requester.

ISO copyright office
Case postale 56 • CH-1211 Geneva 20
Tel. + 41 22 749 01 11
Fax + 41 22 749 09 47
E-mail copyright@iso.org
Web www.iso.org

Published in Switzerland

ISO/CEN PARALLEL PROCESSING

This final draft has been developed within the International Organization for Standardization (ISO), and processed under the **ISO-lead** mode of collaboration as defined in the Vienna Agreement. The final draft was established on the basis of comments received during a parallel enquiry on the draft.

This final draft is hereby submitted to the ISO member bodies and to the CEN member bodies for a parallel two-month approval vote in ISO and formal vote in CEN.

Positive votes shall not be accompanied by comments.

Negative votes shall be accompanied by the relevant technical reasons.

iTeh STANDARD PREVIEW (standards.iteh.ai)

[kSIST FprEN ISO 643:2015](https://standards.iteh.ai/catalog/standards/sist/9148ae3e-81d5-48d9-81c2-411b01aea17c/ksist-fpren-iso-643-2015)

<https://standards.iteh.ai/catalog/standards/sist/9148ae3e-81d5-48d9-81c2-411b01aea17c/ksist-fpren-iso-643-2015>

Contents	Page
Foreword	v
1 Scope	1
2 Normative references	1
3 Terms and definitions	1
4 Symbols and abbreviated terms	2
5 Principle	2
6 Selection and preparation of the specimen	5
6.1 Test location.....	5
6.2 Revealing ferritic grain boundaries.....	5
6.3 Revealing austenitic and prior-austenitic grain boundaries.....	5
6.3.1 General.....	5
6.3.2 “Bechet-Beaujard” method by etching with aqueous saturated picric acid solution.....	5
6.3.3 “Kohn” method by controlled oxidation.....	6
6.3.4 “McQuaid-Ehn” method by carburization at 925 °C.....	7
6.3.5 Proeutectoid ferrite method.....	8
6.3.6 Bainite or gradient-quench method.....	8
6.3.7 Sensitization of austenitic stainless and manganese steels.....	9
6.3.8 Other methods for revealing prior-austenitic grain boundaries.....	9
7 Characterization of grain size	9
7.1 Characterization by an index.....	9
7.1.1 Formulae.....	9
7.1.2 Assessment by comparison with standard grain size charts.....	10
7.1.3 Planimetric method.....	10
7.1.4 Estimation of the index.....	10
7.2 Characterization by the intercept method.....	10
7.2.1 Linear intercept segment method.....	11
7.2.2 Circular intercept segment method.....	12
7.2.3 Assessment of results.....	13
8 Test report	14
Annex A (informative) Summary of methods for revealing ferritic, austenitic, or prior-austenitic grain boundaries in steels	15
Annex B (normative) Determination of grain size — Standard charts taken from ASTM E112	16
Annex C (normative) Evaluation method	31
Bibliography	37

Foreword

ISO (the International Organization for Standardization) is a worldwide federation of national standards bodies (ISO member bodies). The work of preparing International Standards is normally carried out through ISO technical committees. Each member body interested in a subject for which a technical committee has been established has the right to be represented on that committee. International organizations, governmental and non-governmental, in liaison with ISO, also take part in the work. ISO collaborates closely with the International Electrotechnical Commission (IEC) on all matters of electrotechnical standardization.

The procedures used to develop this document and those intended for its further maintenance are described in the ISO/IEC Directives, Part 1. In particular the different approval criteria needed for the different types of ISO documents should be noted. This document was drafted in accordance with the editorial rules of the ISO/IEC Directives, Part 2 (see www.iso.org/directives).

Attention is drawn to the possibility that some of the elements of this document may be the subject of patent rights. ISO shall not be held responsible for identifying any or all such patent rights. Details of any patent rights identified during the development of the document will be in the Introduction and/or on the ISO list of patent declarations received (see www.iso.org/patents).

Any trade name used in this document is information given for the convenience of users and does not constitute an endorsement.

For an explanation on the meaning of ISO specific terms and expressions related to conformity assessment, as well as information about ISO's adherence to the WTO principles in the Technical Barriers to Trade (TBT) see the following URL: [Foreword - Supplementary information](#)

The committee responsible for this document is ISO/TC 17, *Steel*, Subcommittee SC 7, *Methods of testing (other than mechanical tests and chemical analysis)*.

This fourth edition cancels and replaces the third edition (ISO 643:2012), of which it constitutes a minor revision. A note was added after the first paragraph of [7.1.2](#).

iTeh STANDARD PREVIEW
(standards.iteh.ai)

[kSIST FprEN ISO 643:2015](#)

<https://standards.iteh.ai/catalog/standards/sist/9148ae3e-81d5-48d9-81c2-411b01aea17c/ksist-fpren-iso-643-2015>

Steel — Micrographic determination of the apparent grain size

1 Scope

This International Standard specifies a micrographic method of determining apparent ferritic or austenitic grain size in steels. It describes the methods of revealing grain boundaries and of estimating the mean grain size of specimens with unimodal size distribution. Although grains are three-dimensional in shape, the metallographic sectioning plane can cut through a grain at any point from a grain corner to the maximum diameter of the grain, thus, producing a range of apparent grain sizes on the two-dimensional plane, even in a sample with a perfectly consistent grain size.

2 Normative references

The following documents, in whole or in part, are normatively referenced in this document and are indispensable for its application. For dated references, only the edition cited applies. For undated references, the latest edition of the referenced document (including any amendments) applies.

ISO 3785, *Metallic materials — Designation of test specimen axes in relation to product texture*

ASTM E112, *Standard Test Methods for Determining Average Grain Size*

3 Terms and definitions

For the purposes of this document, the following terms and definitions apply.

3.1

grain

closed polygonal shape with more or less curved sides, which can be revealed on a flat cross-section through the sample, polished and prepared for micrographic examination

3.1.1

austenitic grain

crystal with a face-centered cubic crystal structure which may or may not contain annealing twins

3.1.2

ferritic grain

crystal with a body-centered cubic crystal structure which never contains annealing twins

Note 1 to entry: Ferritic grain size is generally estimated for non-alloy steels with a carbon content of 0,25 % or less. If pearlite islands of identical dimensions to those of the ferrite grains are present, the islands are then counted as ferrite grains.

3.2

index

positive, zero, or possibly negative number G which is derived from the mean number m of grains counted in an area of 1 mm^2 of the section of the specimen

Note 1 to entry: By definition, $G = 1$ where $m = 16$; the other indices are obtained by the formula

$$m = 8 \times 2^G.$$

ISO/FDIS 643:2015(E)

3.3 intercept

N

number of grains intercepted by a test line, either straight or curved

Note 1 to entry: See [Figure 1](#).

Note 2 to entry: Straight test lines will normally end within a grain. These end segments are counted as 1/2 an interception. \bar{N} is the average of a number of counts of the number of grains intercepted by the test line applied randomly at various locations. \bar{N} is divided by the true line length, L_T , usually measured in millimetres, in order to obtain the number of grains intercepted per unit length, \bar{N}_L .

3.4 intersection

P

number of intersection points between grain boundaries and a test line, either straight or curved

Note 1 to entry: See [Figure 1](#).

Note 2 to entry: \bar{P} is the average of a number of counts of the number of grain boundaries intersected by the test line applied randomly at various locations. \bar{P} is divided by the true line length, L_T , usually measured in millimetres, in order to obtain the number of grain boundary intersections per unit length, \bar{P}_L .

4 Symbols and abbreviated terms ITeT STANDARD PREVIEW

The symbols used are given in [Table 1](#). (standards.iteh.ai)

5 Principle

kSIST FprEN ISO 643:2015

[https://standards.iteh.ai/catalog/standards/sist/9148ae3e-81d5-48d9-81c2-](https://standards.iteh.ai/catalog/standards/sist/9148ae3e-81d5-48d9-81c2-411b01aee17c4/sist-fpr-en-iso-643-2015)

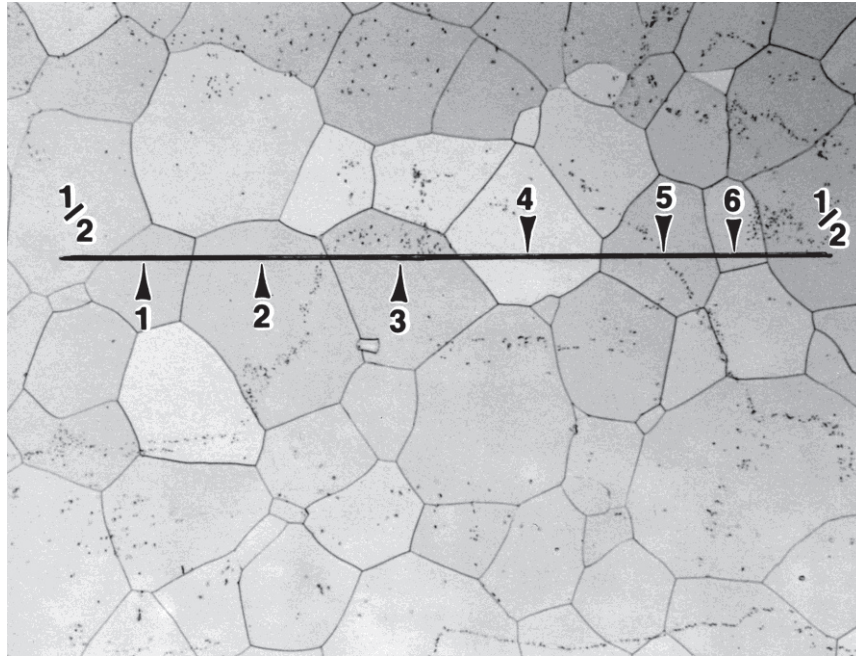
411b01aee17c4/sist-fpr-en-iso-643-2015

The grain size is revealed by micrographic examination of a polished section of the specimen prepared by an appropriate method for the type of steel and for the information sought.

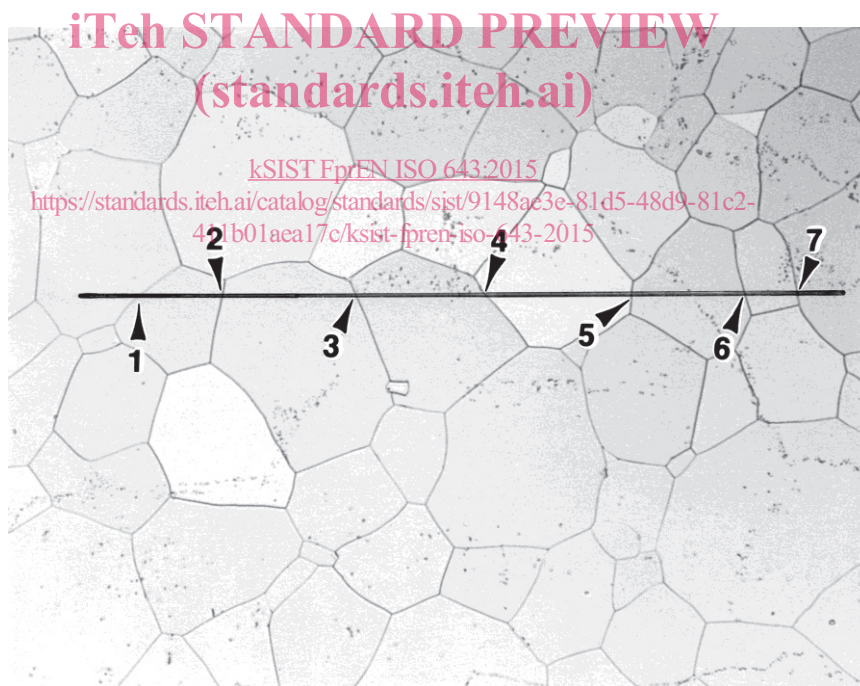
NOTE If the order or the International Standard defining the product does not stipulate the method of revealing the grain, the choice of this method is left to the manufacturer.

This average size is characterized either

- a) by an index obtained
 - usually by comparison with standard charts for the measurement of grain size;
 - or by counting to determine the average number of grains per unit area;
- b) or by the mean value of the intercepted segment.



Interception, N , counts for a straight line on a single-phase grain structure where the arrows point to six intercepts and two line segments ending within grain ($2 \times 1/2 = 1 N$) and $N = 7$



Intersection, P , counts for a straight test line placed over a single-phase grain structure where the arrows point to seven intersection points and $P = 7$

Figure 1 — Examples of intersection, P , and interception, N

Table 1 — Symbols

Symbols	Definition	Value
\bar{a}	Mean area of grain in square millimetres	$\bar{a} = \frac{1}{m}$
A_F	Apparent area of the test figure in square millimetres	—
\bar{d}	Mean grain diameter in millimetres	$\bar{d} = \frac{1}{\sqrt{m}}$
D	Diameter of the circle on the ground glass screen of the microscope or on a photomicrograph enclosing the image of the reference surface of the test piece	79,8 mm (area = 5 000 mm ²)
g	Linear magnification (to be noted as a reference) of the microscopic image	In principle 100
G	Equivalent index of grain size	—
K	Conversion factor from linear magnification $\times g$ to linear magnification $\times 100$	$K = \frac{g}{100}$
l	Mean lineal intercept length, generally expressed in millimetres	$l = 1/\bar{N}_L = 1/\bar{P}_L$
L_T	True length of the test line divided by the magnification, in millimetres	—
m	Number of grains per square millimetre of test piece surface in the area examined	$m = 2 n_{100}$ (magnification $\times 100$) $m = 2 K^2 n_g$ (magnification $\times g$)
M	Number of the closest standard chart picture where g is not 100	—
n_g	Total equivalent number of grains examined on the image of diameter D (with a magnification $\times g$)	—
n_1	Number of grains completely inside the circle of diameter D	—
n_2	Number of grains intersected by the circle of diameter D	—
n_{100}	Total equivalent number of grains examined on the image of diameter D (with magnification $\times 100$)	$n_{100} = n_1 + \frac{n_2}{2}$
\bar{N}	Mean number of grains intercepted per unit length L	—
\bar{N}_L	Mean number of grains intercepted per unit length of the line	$\bar{N}_L = \bar{N} / L_T$
N_x	Number of intercepts per millimetre in the longitudinal direction ^a	—
N_y	Number of intercepts per millimetre in the transverse direction ^a	—
N_z	Number of intercepts per millimetre in the perpendicular direction ^a	—
\bar{P}	Mean number of counts of the number of grain boundaries intersected by the test line applied randomly at various locations	—
\bar{P}_L	Mean number of grain boundary intersections per unit length of test line	$\bar{P}_L = \bar{P} / L_T$

^a The method for designating the direction conforms to ISO 3785.

6 Selection and preparation of the specimen

6.1 Test location

If the order, or the International Standard defining the product, does not specify the number of specimen and the point at which they are to be taken from the product, these are left to the manufacturer, although it has been shown that precision of grain size determination increases the higher the number of specimens assessed. Therefore, it is recommended that two or more sections be assessed. Care shall be taken to ensure that the specimens are representative of the bulk of the product (i.e. avoid heavily deformed material such as that found at the extreme end of certain products or where shearing has been used to remove the specimen, etc.). The specimens shall be polished in accordance with the usual methods.

Unless otherwise stated by the product standard or by agreement with the customer, the polished face of the specimen shall be longitudinal, i.e. parallel to the principal axis of deformation in wrought products. Measurements of the grain size on a transverse plane will be biased if the grain shape is not equiaxial.

6.2 Revealing ferritic grain boundaries

The ferritic grains shall be revealed by etching with nital (ethanolic 2 % to 3 % nitric acid solution) or with an appropriate reagent.

6.3 Revealing austenitic and prior-austenitic grain boundaries

6.3.1 General

In the case of steels having a single-phase or two-phase austenitic structure (delta ferrite grains in an austenitic matrix) at ambient temperature, the grain shall be revealed by an etching solution. For single-phase austenitic stainless steels, the most commonly used chemical etchants are glyceresia, Kalling's reagent (No. 2), and Marble's reagent. The best electrolytic etch for single- or two-phase stainless steels is aqueous 60 % nitric acid at 1.4 V d.c. for 60 s to 120 s, as it reveals the grain boundaries but not the twin boundaries. Aqueous 10 % oxalic acid, 6 V d.c., up to 60 s, is commonly used but is less effective than electrolytic 60 % HNO₃.

For other steels, one or other of the methods specified below shall be used depending on the information required.

- “Bechet-Beaujard” method by etching with aqueous saturated picric acid solution (see [6.3.2](#));
- “Kohn” method by controlled oxidation (see [6.3.3](#));
- “McQuaid-Ehn” method by carburization (see [6.3.4](#));
- grain boundary sensitization method (see [6.3.7](#));
- other methods specially agreed upon when ordering.

NOTE The first three methods are for prior-austenitic grain boundaries while the others are for austenitic Mn or austenitic stainless (see [Annex A](#)).

If comparative tests are carried out for the different methods, it is essential to use the same heat treatment conditions. Results can vary considerably from one method to the other.

6.3.2 “Bechet-Beaujard” method by etching with aqueous saturated picric acid solution

6.3.2.1 Field of application

This method reveals austenitic grains formed during heat treatment of the specimen. It is applicable to specimens which have a martensitic or bainitic structure. For this etch to work, there shall be at least 0,005 % P.