



**SLOVENSKI STANDARD**  
**SIST EN 16120:2013+A1:2014/oprA2:2015**  
**01-marec-2015**

---

**Izdelki za otroke - Otroški sedeži, ki se pritrdijo na stol**

Child use and care articles - Chair mounted seat

Artikel für Säuglinge und Kleinkinder - Sitzerrhöhungen für Stühle

Articles de puériculture - Rehausseurs de chaise

**Ta slovenski standard je istoveten z: EN 16120:2012+A1:2014/prA2**

---

**ICS:**

97.140	Pohištvo	Furniture
97.190	Otroška oprema	Equipment for children

**SIST EN**  
**16120:2013+A1:2014/oprA2:2015** **en,fr,de**



EUROPEAN STANDARD  
NORME EUROPÉENNE  
EUROPÄISCHE NORM

**DRAFT**  
**EN 16120:2012+A1:2014**  
**prA2**

January 2015

---

ICS 97.140; 97.190

English Version

## Child use and care articles - Chair mounted seat

Articles de puériculture - Rehausseurs de chaise

Artikel für Säuglinge und Kleinkinder - Sitzerrhöhungen für  
Stühle

This draft amendment is submitted to CEN members for enquiry. It has been drawn up by the Technical Committee CEN/TC 252.

This draft amendment A2, if approved, will modify the European Standard EN 16120:2012+A1:2014. If this draft becomes an amendment, CEN members are bound to comply with the CEN/CENELEC Internal Regulations which stipulate the conditions for inclusion of this amendment into the relevant national standard without any alteration.

This draft amendment was established by CEN in three official versions (English, French, German). A version in any other language made by translation under the responsibility of a CEN member into its own language and notified to the CEN-CENELEC Management Centre has the same status as the official versions.

CEN members are the national standards bodies of Austria, Belgium, Bulgaria, Croatia, Cyprus, Czech Republic, Denmark, Estonia, Finland, Former Yugoslav Republic of Macedonia, France, Germany, Greece, Hungary, Iceland, Ireland, Italy, Latvia, Lithuania, Luxembourg, Malta, Netherlands, Norway, Poland, Portugal, Romania, Slovakia, Slovenia, Spain, Sweden, Switzerland, Turkey and United Kingdom.

Recipients of this draft are invited to submit, with their comments, notification of any relevant patent rights of which they are aware and to provide supporting documentation.

**Warning** : This document is not a European Standard. It is distributed for review and comments. It is subject to change without notice and shall not be referred to as a European Standard.



EUROPEAN COMMITTEE FOR STANDARDIZATION  
COMITÉ EUROPÉEN DE NORMALISATION  
EUROPÄISCHES KOMITEE FÜR NORMUNG

**CEN-CENELEC Management Centre: Avenue Marnix 17, B-1000 Brussels**

## Contents

	Page
Foreword.....	3
1 <b>Modification to the Foreword</b> .....	4
2 <b>Modification to Clause 1 – Scope</b> .....	4
3 <b>Modification to Clause 2 – Normative references</b> .....	4
4 <b>Modification to Clause 3 – Terms and definitions</b> .....	4
5 <b>Modification to Clause 4 – Test equipment</b> .....	4
6 <b>Modification to Clause 6 – Chemical hazards - Migration of certain elements (see A.2)</b> .....	5
7 <b>Modification to Clause 7 – Thermal hazards (see A.3)</b> .....	6
8 <b>Modification to Clause 8 – Mechanical hazards (see A.4)</b> .....	6
9 <b>Modification to Clause 9 – Product information</b> .....	11
10 <b>Modification to Annex A</b> .....	12
11 <b>Addition of Annex C</b> .....	13
12 <b>Addition of a Bibliography</b> .....	26

## Foreword

This document (EN 16120:2012+A1:2014/prA2:2015) has been prepared by Technical Committee CEN/TC 252 "Child use and care articles", the secretariat of which is held by AFNOR.

This document is currently submitted to the CEN Enquiry.

**EN 16120:2012+A1:2014/prA2:2015 (E)****1 Modification to the Foreword**

*In the Foreword, add as 7<sup>th</sup> paragraph:*

"This document has been prepared under a mandate given to CEN by the European Commission and the European Free Trade Association."

**2 Modification to Clause 1 – Scope**

*Replace the whole Scope with the following:*

"This European Standard specifies safety requirements and test methods for chair mounted seats intended to be positioned on an adult chair to raise the sitting position of a child able to sit unaided up to an age of 36 months or a maximum weight of 15 kg.

This European Standard does not apply to cushions, pads and to products only aimed at restraining the child on a chair without raising the child's sitting position."

**3 Modification to Clause 2 – Normative references**

*Add:*

"EN 71-2:2011+A1:2014, *Safety of toys — Part 2: Flammability*".

*Replace* "EN 71-3:1994" with "EN 71-3".

*Delete* "EN 1103, *Textiles — Fabrics for apparel — Detailed procedure to determine the burning behaviour*".

**4 Modification to Clause 3 – Terms and definitions**

*Add the following terms and definitions:*

**"3.5****locking device**

mechanical component that maintains part(s) of the product when erected in the position of use (e.g. latch(es), hooks, over centre lock...) which can be activated or deactivated by action(s) on the operating device

**3.6****operating device**

part of the locking mechanism(s) designed to be activated by the carer through one or several positive action(s)

**3.7.****locking mechanism**

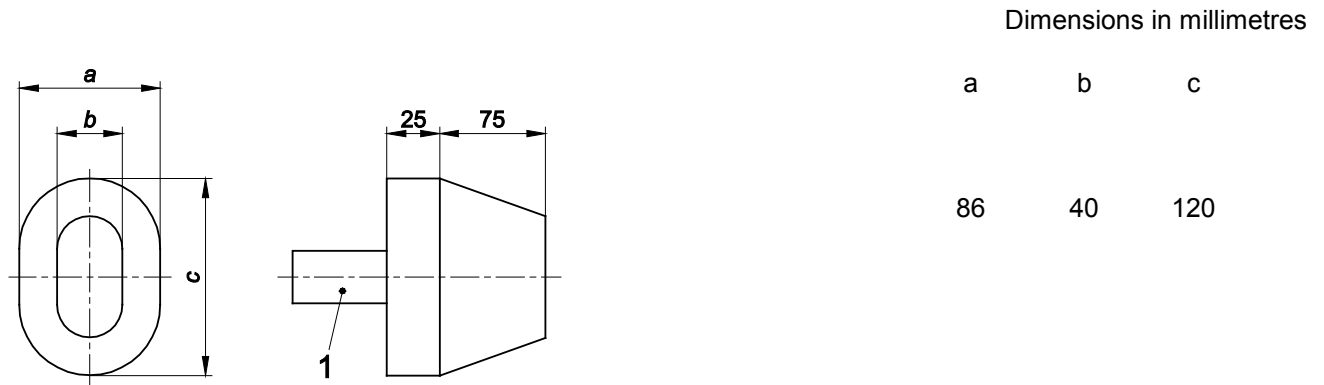
assembly of components consisting of one or more locking device(s) and one or more operating device(s)".

**5 Modification to Clause 4 – Test equipment**

*Add the following clauses:*

**"4.6 Small torso probe**

The small torso probe shall be made from plastics or other hard, smooth material with dimensions as shown in Figure 5.

**Key**

1 handle

**Figure 5 — Small torso probe****4.7 Test beam**

A beam, 86 mm wide with a mass of  $0,5 \text{ kg} \pm 10 \text{ g}$ .

**4.8 Test sphere**

A sphere made of steel with a diameter of 90 mm and a weight of  $(3,0 \pm 0,1) \text{ kg}$ ."

**6 Modification to Clause 6 – Chemical hazards - Migration of certain elements (see A.2)**

*Replace the text of Clause 6 with the following:*

"The migration of elements from materials on exterior surfaces shall not exceed the limits listed below when tested in accordance with EN 71-3.

Element	mg/kg
Aluminium	70 000
Antimony	560
Arsenic	47
Barium	18 750
Boron	15 000
Cadmium	17
Chromium (III)	460
Chromium (VI)	0,2
Cobalt	130
Copper	7 700
Lead	160
Manganese	15 000
Mercury	94
Nickel	930
Selenium	460

**EN 16120:2012+A1:2014/prA2:2015 (E)**

Strontium	56 000
Tin	180 000
Organic tin	12
Zinc	46 000

Materials on the back of the backrest and the surface under the seat are excluded from these requirements.

A separate sample may be used for these tests."

**7 Modification to Clause 7 – Thermal hazards (see A.3)**

*Replace the text of Clause 7 with the following:*

"When tested in accordance with EN 71-2:2011+A1:2014, 5.5, there shall be no flash effect.

A separate sample, conditioned according to 5.1, may be used for these tests."

**8 Modification to Clause 8 – Mechanical hazards (see A.4)**

*Replace the text of 8.1.2, Unintentional release of locking mechanism(s), with the following:*

"To avoid the hazards due to unintentional release of locking mechanisms, one of the following conditions shall be fulfilled before and after testing in accordance with 8.1.3:

- a) at least one operating device requires an operating force greater than 50 N measured with and without a mass of 15 kg on the seat, or
- b) at least one locking mechanism is released by the use of a tool, or
- c) at least one operating device requires at least two consecutive actions, the first of which shall be maintained while the second is carried out, or
- d) at least one locking mechanism is released when two independent operating devices are simultaneously operated.

Inflatable systems are excluded from the requirements of this clause.

Products that in every position of use have to be removed from the adult chair to adjust the height or to fold the base for storage are excluded from the requirements of this clause.

NOTE The exclusion of the last paragraph applies only to products that need to be detached from the adult chair to adjust the height or to fold the base (e.g. disassemble the product and re-assemble it in another configuration), no matter what the instructions for use say. The need to remove just the child from the product to adjust the height or fold the base is not enough to apply the exclusion."

*Add the following new after 8.2.1.2:*

**"8.2.2 Entrapment of head****8.2.2.1 Requirements**

With the exception of the entrance to the seat unit and the openings for the child's legs to pass through, there shall be no holes, gaps or openings above the seat surface which allows the small torso probe (4.6) to pass through when tested in accordance with 8.2.2.2.



### 8.2.2.2 Test method

Check whether the small torso probe (4.6) with an applied force of up to 30 N, enters into any accessible opening above the seat surface. The probe shall be inserted in a straight direction along the longitudinal axis of the probe."

*Replace the text of 8.3.1, Requirements for compression points, with the following:*

"After the chair mounted seat is set up for normal use in accordance with the manufacturer's instructions there shall be no accessible compression points which can close to less than 12 mm unless they are always less than 5 mm, as the result of:

- a) the movement of the chair mounted seat; or
- b) the movement of body weight by the child using the chair mounted seat; or
- c) the application of an external force (either by another child or, unintentionally, by the carer, or by a powered mechanism).

Movement due to elasticity of materials shall not be considered as compression hazard.

Compression points between the chair mounted seat and the chair are excluded from this requirement."

*Replace the text of 8.5.1, Requirements, with the following:*

"Any component or filling material that is considered able to be gripped by a child in accordance with 8.5.2.1 shall be tested in accordance with 8.5.2.2 and 8.5.2.3.

Any component or part of a component or filling material that is removed shall not fit entirely within the small parts cylinder specified in 4.4."

*Replace the text of 8.6, Suffocation hazards (see A.4.5), with the following:*


#### **"8.6.1 Plastic packaging**

Any plastic covering used for packaging with an area greater than 100 mm x 100 mm shall conform to any of the following requirements:

- a) have an average sheet thickness of 0,038 mm or more; or
- b) be perforated with defined holes so that a minimum of 1 % of the area has been removed over any area of 30 mm x 30 mm.

Any plastic covering used for packaging with an opening perimeter greater than 360 mm shall not have a drawstring or cord as a means of closing and shall be marked in the official language(s) of the country of sale with the word "WARNING" followed by the statement "Keep plastic covering away from children to avoid suffocation".

The statement may be expressed in different words providing they clearly convey the same warning.

The text shall be accompanied by the symbol of the warning triangle () . The symbol can be put on the top of the list of warnings when different languages are used.

Shrunk-on films that are destroyed when the packaging is opened by the user are excluded from these requirements.

**EN 16120:2012+A1:2014/prA2:2015 (E)****8.6.2 Plastic decals****8.6.2.1 Requirement**

Plastic decals or parts of plastic decals shall not become detached when tested in accordance with 8.6.2.2.

**8.6.2.2 Test method**

Completely submerge the area to be tested in a container of demineralised water at a temperature of  $(20 \pm 5)^\circ\text{C}$  for 4 min. Remove the product, shake off excess water and keep the product in ambient temperature for 10 min."

*Add new title 8.9, Hazards from falling, and renumber 8.9 ,Chair attachment systems, and 8.10 ,Restraint system, as follows:*

*8.9.1, Chair attachment systems**8.9.1.1, Requirements**8.9.1.2, Test methods**8.9.1.2.1, Test method for strength of the chair attachment system**8.9.1.2.2, Test method for slippage of the chair attachment system**8.9.2, Restraint system**8.9.2.1, Requirements**8.9.2.2, Test methods**8.9.2.2.1, Test method for strength of the anchoring points of the restraint system**8.9.2.2.2, Test method for strength of the fastener of the restraint system**8.9.2.2.3, Test method for slippage of the restraint system*

*After 8.10.2.3 (new 8.9.2.2.3) add new 8.9.3 ,Lateral protections (see A.4.8.1), as follows:*

**"8.9.3 Lateral protections (see A.4.8.1)****8.9.3.1 Requirements**

Chair mounted seats sold as suitable for use with children younger than 18 months shall be fitted with lateral protections.

When tested in accordance with 8.9.3.2, the test sphere shall not come in contact with the test beam.

Openings in the lateral protections are allowed, provided that they comply with all the relevant requirements of this standard.

**8.9.3.2 Test method**

Place the chair mounted seat on a horizontal flat rigid surface and set it up in accordance with the manufacturer's instructions.

Position the beam (4.7) across and in contact with the lateral protections, parallel to and against the backrest, with the 86 mm side in a horizontal position.