
Kolesa - Prikolice za kolesa - Varnostne zahteve in preskusne metode

Cycles - Cycle trailers - Safety requirements and test methods

Fahrräder - Fahrradanhänger - Sicherheitstechnische Anforderungen und Prüfverfahren

Cycles - Remorques pour cycles - Exigences de sécurité et méthodes d'essai

Ta slovenski standard je istoveten z: EN 15918:2011+A1:2013/prA2

[SIST EN 15918:2011+A1:2013/kprA2:2016](https://standards.iteh.ai/catalog/standards/sist/6eef6576-45bf-422e-a851-fd441202f2fa/sist-en-15918-2011a1-2013-kpra2-2016)

<https://standards.iteh.ai/catalog/standards/sist/6eef6576-45bf-422e-a851-fd441202f2fa/sist-en-15918-2011a1-2013-kpra2-2016>

ICS:

43.150

Kolesa

Cycles

**SIST EN
15918:2011+A1:2013/kprA2:2014**

en,fr,de

iTeh STANDARD PREVIEW **(standards.iteh.ai)**

SIST EN 15918:2011+A1:2013/kprA2:2016

<https://standards.iteh.ai/catalog/standards/sist/6eef6576-45bf-422e-a851-fd441202f2fa/sist-en-15918-2011a1-2013-kpra2-2016>

EUROPEAN STANDARD
NORME EUROPÉENNE
EUROPÄISCHE NORM

DRAFT
EN 15918:2011+A1:2013
prA2

July 2014

ICS 43.150

English Version

Cycles - Cycle trailers - Safety requirements and test methods

Cycles - Remorques pour cycles - Exigences de sécurité et méthodes d'essai

Fahrräder - Fahrradanhänger - Sicherheitstechnische Anforderungen und Prüfverfahren

This draft amendment is submitted to CEN members for enquiry. It has been drawn up by the Technical Committee CEN/TC 333.

This draft amendment A2, if approved, will modify the European Standard EN 15918:2011+A1:2013. If this draft becomes an amendment, CEN members are bound to comply with the CEN/CENELEC Internal Regulations which stipulate the conditions for inclusion of this amendment into the relevant national standard without any alteration.

This draft amendment was established by CEN in three official versions (English, French, German). A version in any other language made by translation under the responsibility of a CEN member into its own language and notified to the CEN-CENELEC Management Centre has the same status as the official versions.

CEN members are the national standards bodies of Austria, Belgium, Bulgaria, Croatia, Cyprus, Czech Republic, Denmark, Estonia, Finland, Former Yugoslav Republic of Macedonia, France, Germany, Greece, Hungary, Iceland, Ireland, Italy, Latvia, Lithuania, Luxembourg, Malta, Netherlands, Norway, Poland, Portugal, Romania, Slovakia, Slovenia, Spain, Sweden, Switzerland, Turkey and United Kingdom.

Recipients of this draft are invited to submit, with their comments, notification of any relevant patent rights of which they are aware and to provide supporting documentation.

Warning : This document is not a European Standard. It is distributed for review and comments. It is subject to change without notice and shall not be referred to as a European Standard.



EUROPEAN COMMITTEE FOR STANDARDIZATION
COMITÉ EUROPÉEN DE NORMALISATION
EUROPÄISCHES KOMITEE FÜR NORMUNG

CEN-CENELEC Management Centre: Avenue Marnix 17, B-1000 Brussels

Contents

	Page
Foreword.....	3
1 Modification to clause 4.4 "Tolerances"	4
2 Modification to 6.3 "Deflection device"	4
3 Modification to 6.11.2	4
4 Modification to 6.15.2.3	5
5 Modification to 6.16.1	6
6 Modification to 6.16.2	6
7 Modification to 6.18.2	6
8 Modification to 6.19.2	6
9 Modification to clause 8	7
10 Modification to Annex A.....	7

iTeh STANDARD PREVIEW (standards.iteh.ai)

[SIST EN 15918:2011+A1:2013/kprA2:2016](https://standards.iteh.ai/catalog/standards/sist/6eef6576-45bf-422e-a851-fd441202f2fa/sist-en-15918-2011a1-2013-kpra2-2016)
<https://standards.iteh.ai/catalog/standards/sist/6eef6576-45bf-422e-a851-fd441202f2fa/sist-en-15918-2011a1-2013-kpra2-2016>

Foreword

This document (EN 15918:2011+A1:2013/prA2:2014) has been prepared by Technical Committee CEN/TC 333 "Cycles", the secretariat of which is held by UNI.

This document is currently submitted to the CEN Enquiry.

iTeh STANDARD PREVIEW (standards.iteh.ai)

SIST EN 15918:2011+A1:2013/kprA2:2016
<https://standards.iteh.ai/catalog/standards/sist/6eef6576-45bf-422e-a851-fd441202f2fa/sist-en-15918-2011a1-2013-kpra2-2016>

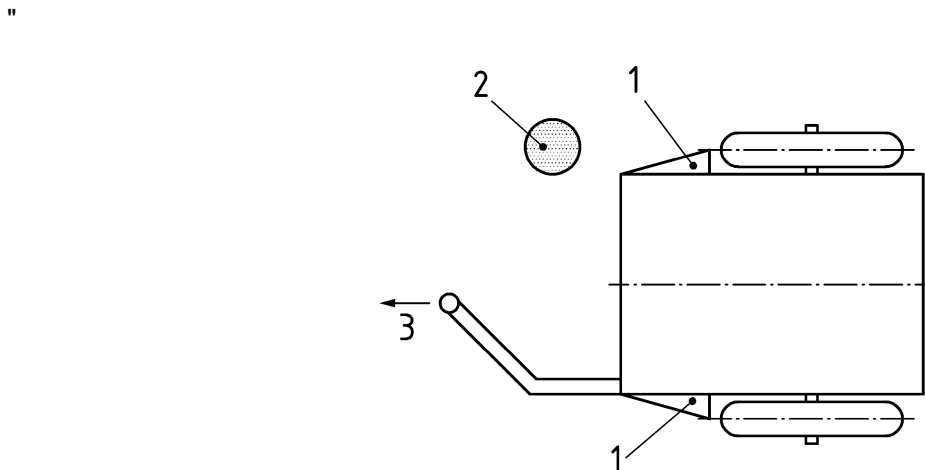
EN 15918:2011+A1:2013/prA2:2014 (E)

1 Modification to clause 4.4 "Tolerances"

Replace in the Table 2 in the row temperatures the tolerance " $\pm 10\text{ }^{\circ}\text{C}$ " by " $\pm 5\text{ }^{\circ}\text{C}$ ".

2 Modification to 6.3 "Deflection device"

Replace Figure 2 by the following:

**Key**

- 1 deflection devices
- 2 vertical obstacle
- 3 moving direction

iTeh STANDARD PREVIEW
(standards.iteh.ai)

Figure 2 — Example of the deflection devices

<https://standards.iteh.ai/catalog/standards/sist/6ee16576-45b1-422e-a851-fd441202f2fa/sist-en-15918-2011a1-2013-kpra2-2016>

Replace the last paragraph by the following:

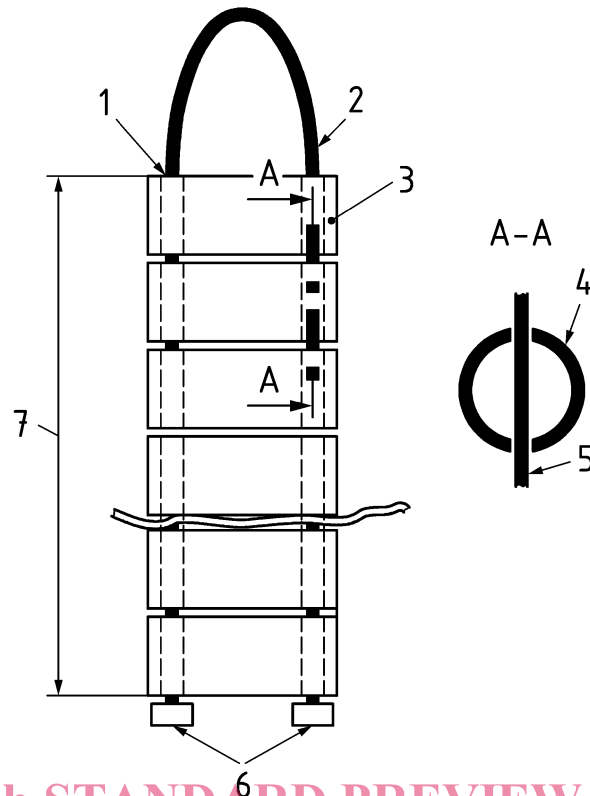
"The width of cycle trailer in front of the wheels shall not be less than the distance between the tyre centrelines and be shaped so that the cycle trailer is deflected sideways when drawn past a vertical obstacle with a minimum height of 750 mm and diameter of 90 mm (see Figure 2)."

3 Modification to 6.11.2

Replace the 1st paragraph by the following:

"For the determination of the required headroom, one or two test bodies, depending on the design of the cycle trailer, are strapped into the seat or seats with the hinged board placed between the test body and the seat back. Fully tighten the belts and then pull out the hinged board.

The hinged board is used to allow slackness while adjusting the straps of the restraint system around test mass (see Figure 7).



iTeh STANDARD PREVIEW (standards.iteh.ai)

Key

- 1 hole Ø 3 mm
- 2 steel cable Ø 1,5 mm
- 3 tube Ø 25 mm
- 4 tube Ø 25 mm
- 5 steel cable Ø1,5 mm
- 6 cable ends cycle type
- 7 total length = 13 tubes
length of each tube: 60 mm

[SIST EN 15918:2011+A1:2013/kprA2:2016
https://standards.iteh.ai/catalog/standards/sist/6eef6576-45bf-422e-a851-fd441202f2fa/sist-en-15918-2011a1-2013-kpra2-2016](https://standards.iteh.ai/catalog/standards/sist/6eef6576-45bf-422e-a851-fd441202f2fa/sist-en-15918-2011a1-2013-kpra2-2016)

Figure 7 — Hinged board"

4 Modification to 6.15.2.3

Replace in the 1st paragraph the reference to former "Figure 7" by "Figure 8".

Replace numbering of former "Figure 7" by "Figure 8 - ..."

Replace the last two sentences in the 2nd paragraph below Figure 8 (new numbering) by the following:

"The length of each obstacle in the direction of motion shall be from 50 mm to 100 mm with a 45° ramped leading face and perpendicular trailing face, and shall be at least 300 mm wide (see Figure 9). If there are two wheel tracks, the two rows of obstacles shall not overlap and have a distance of more than 350 mm."

Replace numbering of former "Figure 8" by "Figure 9 - ..."

EN 15918:2011+A1:2013/prA2:2014 (E)

5 Modification to 6.16.1

Replace in a) the reference to former "Figure 9" by "Figure 10".

Replace in b) the reference to former "Figure 10" by "Figure 11".

Replace numbering of former "Figure 9" by "Figure 10 - ..."

Replace numbering of former "Figure 10" by "Figure 11 - ..."

6 Modification to 6.16.2

Replace the whole clause by the following:

"The cycle trailer without wheels shall be fixed in its usual riding position, with any wheel suspension devices locked, on a plane horizontal surface (see Figure 12). The connecting device of the drawbar shall be attached to an actuator in such a way that only nearly horizontal movement is applied to the trailer.

Figure 12 depicts a possible arrangement of test equipment for this test. Small vertical oscillations of the connecting device are permitted, of amplitude not exceeding 10 % of the horizontal motion.



Figure 12 — Arrangement of test equipment

The cycle trailer shall be coupled to the actuator and 100 000 test cycles shall be performed with a force (in N) of $\pm 4,5 \times$ total weight as given by the manufacturer and a maximum frequency of 10 Hz."

7 Modification to 6.18.2

Replace in the 2nd paragraph the reference to former "Figure 12" by "Figure 13".

Replace numbering of former "Figure 12" by "Figure 13 - ..."

8 Modification to 6.19.2

Replace the 2nd paragraph by the following:

"A force of 2,5 times the nominal load permitted by the manufacturer shall be applied for at least 15 s to a plane pad at $45^\circ \pm 5^\circ$ as shown in Figure 14 and as described below. The loading pad shall have a diameter of 200 mm."

Replace numbering of former "Figure 13" by "Figure 14 - ..."

Add the following sentence as 4th paragraph before the Figure 14 (new numbering):

"If this point of application due to the design is not feasible, the next possible loading point on the frame with the most of the effort shall be used and the position has to be recorded in the test report."

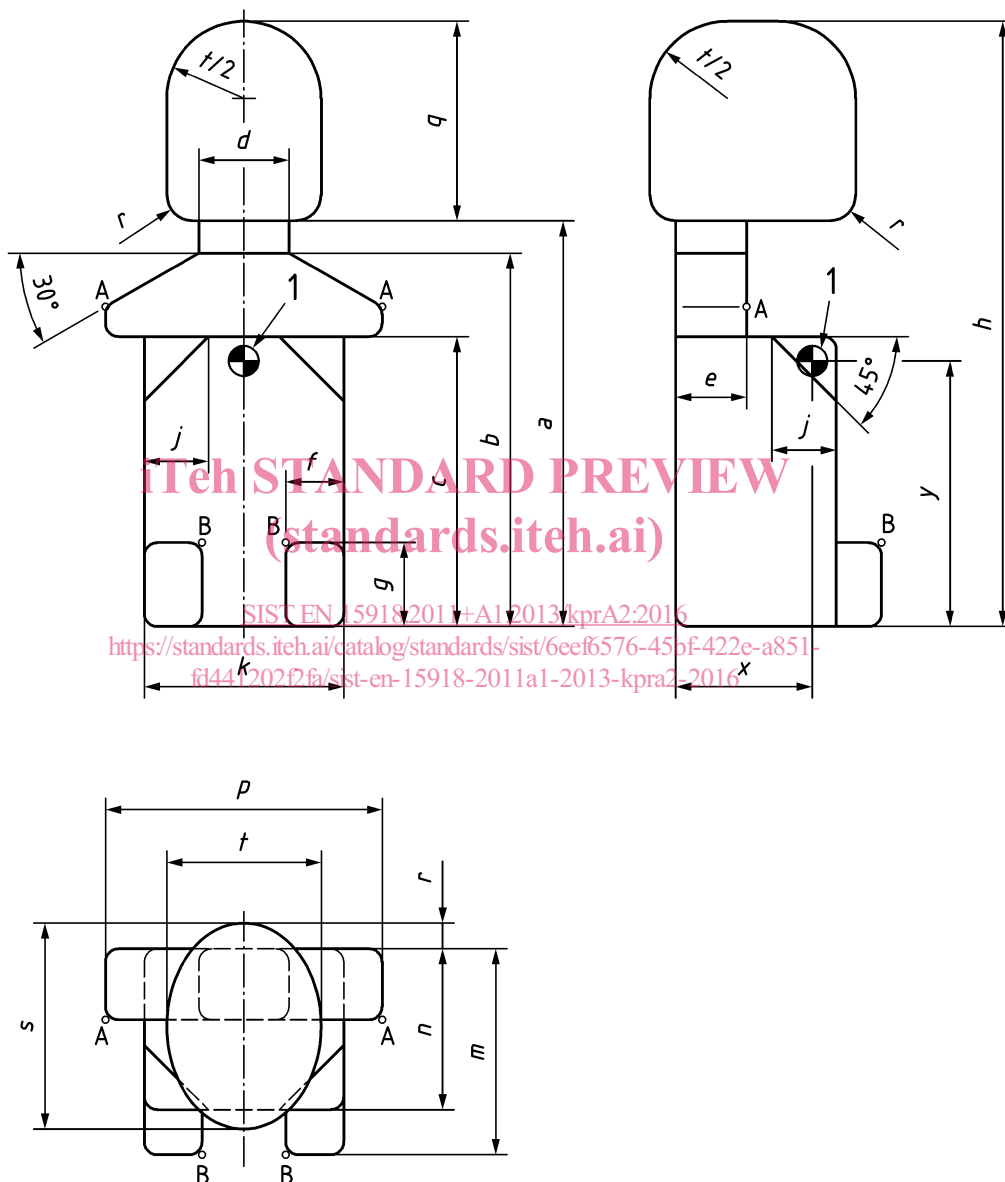
9 Modification to clause 8

Add as last indent r) the following:

"r) information that cycle trailers pulled by an EPAC can be restricted by law."

10 Modification to Annex A

Replace Figure A.1 by the following:



Key

1 Centre of gravity

NOTE The dimensions of the test bodies are given in Table A.1.

Figure A.1 — Test bodies