
**Rubber, vulcanized or thermoplastic —
Determination of permeability to gases**

*Caoutchouc vulcanisé ou thermoplastique — Détermination de la
perméabilité aux gaz*

iTeh STANDARD PREVIEW
(standards.iteh.ai)

[ISO 2782:2006](https://standards.iteh.ai/catalog/standards/sist/ed754ff1-c653-41d9-9290-0bd89e7a50f4/iso-2782-2006)

[https://standards.iteh.ai/catalog/standards/sist/ed754ff1-c653-41d9-9290-
0bd89e7a50f4/iso-2782-2006](https://standards.iteh.ai/catalog/standards/sist/ed754ff1-c653-41d9-9290-0bd89e7a50f4/iso-2782-2006)



PDF disclaimer

This PDF file may contain embedded typefaces. In accordance with Adobe's licensing policy, this file may be printed or viewed but shall not be edited unless the typefaces which are embedded are licensed to and installed on the computer performing the editing. In downloading this file, parties accept therein the responsibility of not infringing Adobe's licensing policy. The ISO Central Secretariat accepts no liability in this area.

Adobe is a trademark of Adobe Systems Incorporated.

Details of the software products used to create this PDF file can be found in the General Info relative to the file; the PDF-creation parameters were optimized for printing. Every care has been taken to ensure that the file is suitable for use by ISO member bodies. In the unlikely event that a problem relating to it is found, please inform the Central Secretariat at the address given below.

iTeh STANDARD PREVIEW
(standards.iteh.ai)

[ISO 2782:2006](#)

<https://standards.iteh.ai/catalog/standards/sist/ed754ff1-c653-41d9-9290-0bd89e7a50f4/iso-2782-2006>

© ISO 2006

All rights reserved. Unless otherwise specified, no part of this publication may be reproduced or utilized in any form or by any means, electronic or mechanical, including photocopying and microfilm, without permission in writing from either ISO at the address below or ISO's member body in the country of the requester.

ISO copyright office
Case postale 56 • CH-1211 Geneva 20
Tel. + 41 22 749 01 11
Fax + 41 22 749 09 47
E-mail copyright@iso.org
Web www.iso.org

Published in Switzerland

Contents

Page

Foreword.....	iv
Introduction	v
1 Scope	1
2 Normative references	1
3 Terms and definitions.....	1
4 Principle.....	1
5 Apparatus	2
6 Test pieces	4
6.1 Shape and dimensions.....	5
6.2 Number of test pieces	5
7 Time between vulcanization and testing.....	5
8 Temperature of test	6
9 Test procedure	6
9.1 General.....	6
9.1.1 Preparation of test piece.....	6
9.1.2 Setting up the apparatus.....	6
9.1.3 Conditioning the test cell.....	6
9.1.4 Determination of cross-sectional area of capillary tube.....	7
9.2 Determination of flow rate.....	8
9.3 Determination of $(V_2 p_2 - V_1 p_1)$	9
9.3.1 Procedure A: Horizontal capillary tube method	9
9.3.2 Procedure B: Vertical capillary tube method.....	10
10 Expression of results	12
11 Test report	13

Foreword

ISO (the International Organization for Standardization) is a worldwide federation of national standards bodies (ISO member bodies). The work of preparing International Standards is normally carried out through ISO technical committees. Each member body interested in a subject for which a technical committee has been established has the right to be represented on that committee. International organizations, governmental and non-governmental, in liaison with ISO, also take part in the work. ISO collaborates closely with the International Electrotechnical Commission (IEC) on all matters of electrotechnical standardization.

International Standards are drafted in accordance with the rules given in the ISO/IEC Directives, Part 2.

The main task of technical committees is to prepare International Standards. Draft International Standards adopted by the technical committees are circulated to the member bodies for voting. Publication as an International Standard requires approval by at least 75 % of the member bodies casting a vote.

Attention is drawn to the possibility that some of the elements of this document may be the subject of patent rights. ISO shall not be held responsible for identifying any or all such patent rights.

ISO 2782 was prepared by Technical Committee ISO/TC 45, *Rubber and rubber products*, Subcommittee SC 2, *Testing and analysis*.

This third edition cancels and replaces the second edition (ISO 2782:1995), which has been revised to update the normative references (ISO 471 and ISO 3383 have been replaced by ISO 23529).

iTeh STANDARD PREVIEW
(standards.iteh.ai)

ISO 2782:2006
<https://standards.iteh.ai/catalog/standards/sist/ed754ff1-c653-41d9-9290-0bd89e7a50f4/iso-2782-2006>

Introduction

The measurement of the permeability of rubber to gases is important in the evaluation of compounds for products such as inner tubes, tubeless-tyre liners, hoses, balloons and other gas containers, seals and diaphragms. The measurement is also of theoretical importance in the study of the characteristics of gas diffusion and gas solubility in relation to polymer structure.

iTeh STANDARD PREVIEW (standards.iteh.ai)

[ISO 2782:2006](https://standards.iteh.ai/catalog/standards/sist/ed754ff1-c653-41d9-9290-0bd89e7a50f4/iso-2782-2006)

<https://standards.iteh.ai/catalog/standards/sist/ed754ff1-c653-41d9-9290-0bd89e7a50f4/iso-2782-2006>

iTeh STANDARD PREVIEW
(standards.iteh.ai)

ISO 2782:2006

<https://standards.iteh.ai/catalog/standards/sist/ed754ff1-c653-41d9-9290-0bd89e7a50f4/iso-2782-2006>

Rubber, vulcanized or thermoplastic — Determination of permeability to gases

WARNING — Persons using this International Standard should be familiar with normal laboratory practice. This standard does not purport to address all of the safety problems, if any, associated with its use. It is the responsibility of the user to establish appropriate safety and health practices and to ensure compliance with any national regulatory conditions.

1 Scope

This International Standard describes two procedures for measuring the permeability of rubber to gases under steady-state conditions. One uses a horizontal measuring device for measurements at constant pressure and the other uses a vertical measuring device for measurements at constant volume or constant pressure. The results obtained by these procedures may be extrapolated to thicknesses of material different from that of the test piece, providing the rubber is homogeneous and isotropic.

The procedures apply to solid rubber of hardness not less than 35 IRHD and to gases such as air, nitrogen, oxygen, hydrogen, liquefied petroleum gas (in gaseous form) and coal gas. Errors may be introduced if the gas used appreciably swells the rubber under test.

2 Normative references

ISO 2782:2006

<https://standards.iteh.ai/catalog/standards/sist/ed754ff1-c653-41d9-9290-0bd89e7a50f4/iso-2782-2006>

The following referenced documents are indispensable for the application of this document. For dated references, only the edition cited applies. For undated references, the latest edition of the referenced document (including any amendments) applies.

ISO 23529, *Rubber — General procedures for preparing and conditioning test pieces for physical test methods*

3 Terms and definitions

For the purposes of this document, the following terms and definitions apply.

3.1

permeability coefficient

rate of volume flow of gas under steady-state conditions, referred to standard temperature and pressure, between opposite faces of a unit cube of solid rubber when subjected to a unit pressure difference and controlled temperature

4 Principle

The cavity of a test cell, maintained at a constant temperature, is divided by a disc test piece into a high-pressure and a low-pressure side. The high-pressure side is connected to a constant-pressure gas reservoir or is of such a volume that, once filled, it stays at practically constant pressure. The gas permeates into the low-pressure side, which is of a very low volume and connected to a capillary tube which measures the volume change caused by permeation of the gas.

5 Apparatus

5.1 Test cell, having a means of clamping the test piece round its periphery in a gastight manner so as to expose one surface to gas under pressure. The other surface of the test piece shall be supported against the force due to the gas pressure so that no appreciable deformation takes place. For this reason, the low-pressure side of the test cell shall be filled with a rigid, highly permeable packing piece which may consist of a disc of microporous material such as microporous ebonite, discs of microporous sintered stainless steel or discs of fine wire gauze or filter paper which completely fill the cavity. A means of indicating gas pressure with an error of not more than 1 % shall be connected to the high-pressure side of the cell.

The internal volume of the test cell on the high-pressure side of the test piece shall be at least $25 \times 10^{-6} \text{ m}^3$ (25 cm^3) to minimize the pressure loss due to diffusion during a test, which may last several hours.

The internal volume of the test cell on the low-pressure side of the test piece shall be kept to a minimum by the use of permeable packing as described above and by small-diameter passages through a dismantlable coupling and tubing to a capillary tube (5.2). The total free volume between the test piece and the datum mark on the capillary tube shall not exceed $2 \times 10^{-6} \text{ m}^3$ (2 cm^3).

Test cells shall be of metal construction with sufficient mass to ensure temperature stability, and shall be provided with a drilled pocket to hold a temperature-measuring device (5.3). It is essential that the assembled test cell be gastight.

5.2 Capillary tube, for the measurement of permeated-gas volumes, the tube being of known and uniform cross-section over the length used for volume measurements.

Suitable cross-sections are $0,7 \times 10^{-6} \text{ m}^2$ to $2,0 \times 10^{-6} \text{ m}^2$ ($0,7 \text{ mm}^2$ to $2,0 \text{ mm}^2$). The cross-section shall be uniform to within an accuracy of 1 %.

The capillary tube may be either horizontally or vertically mounted. It shall be filled with a non-volatile liquid which does not dissolve the gas [suitable liquids are di-(2-ethylhexyl) sebacate or tritolyl phosphate, coloured with Sudan red]. If the capillary is mounted horizontally, a drop of liquid is used to indicate variations in volume. If the capillary tube is mounted vertically, a vertically adjustable reservoir of liquid is connected by a T-piece to the bottom of the capillary tube. The capillary tube shall be graduated or a graduated scale shall be fixed close to the long, straight section. Alternatively, a microscope or cathetometer may be used to observe the position of the liquid. If the capillary tube is mounted vertically, a by-pass valve shall be fitted between the point at which the capillary tube leaves the cell and the datum mark on the scale, to allow gas to be released and the liquid in the capillary brought back to the datum mark after the conditioning period.

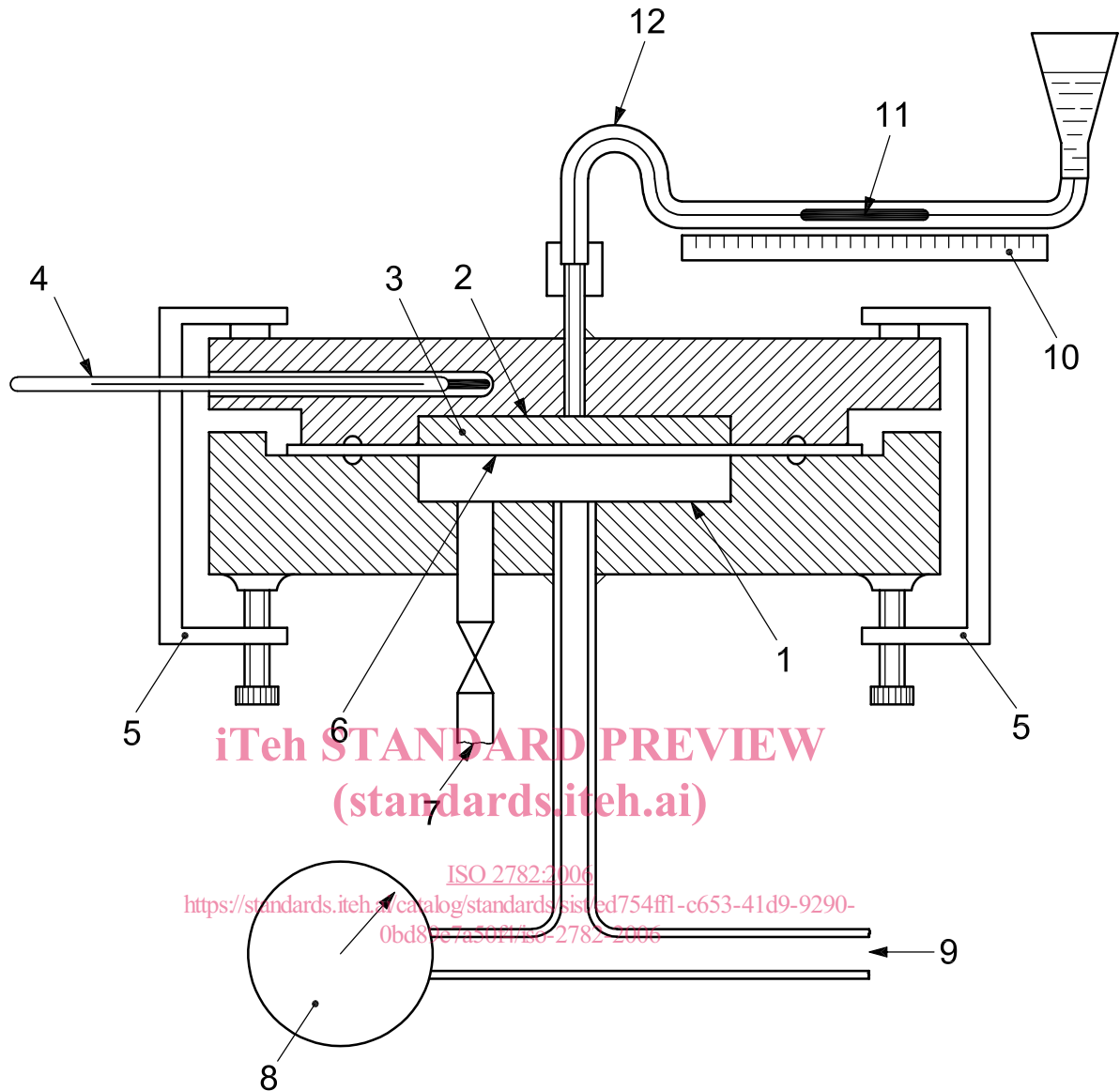
NOTE When making measurements at constant volume, an alternative means of measuring pressure, for example a transducer, may be used, provided it is suitably calibrated and enables the procedure to be carried out in essentially the same manner.

Examples of suitable apparatus are shown in Figures 1 and 2.

5.3 Temperature-measuring device, readable to within $\pm 0,2 \text{ }^\circ\text{C}$.

5.4 Barometer.

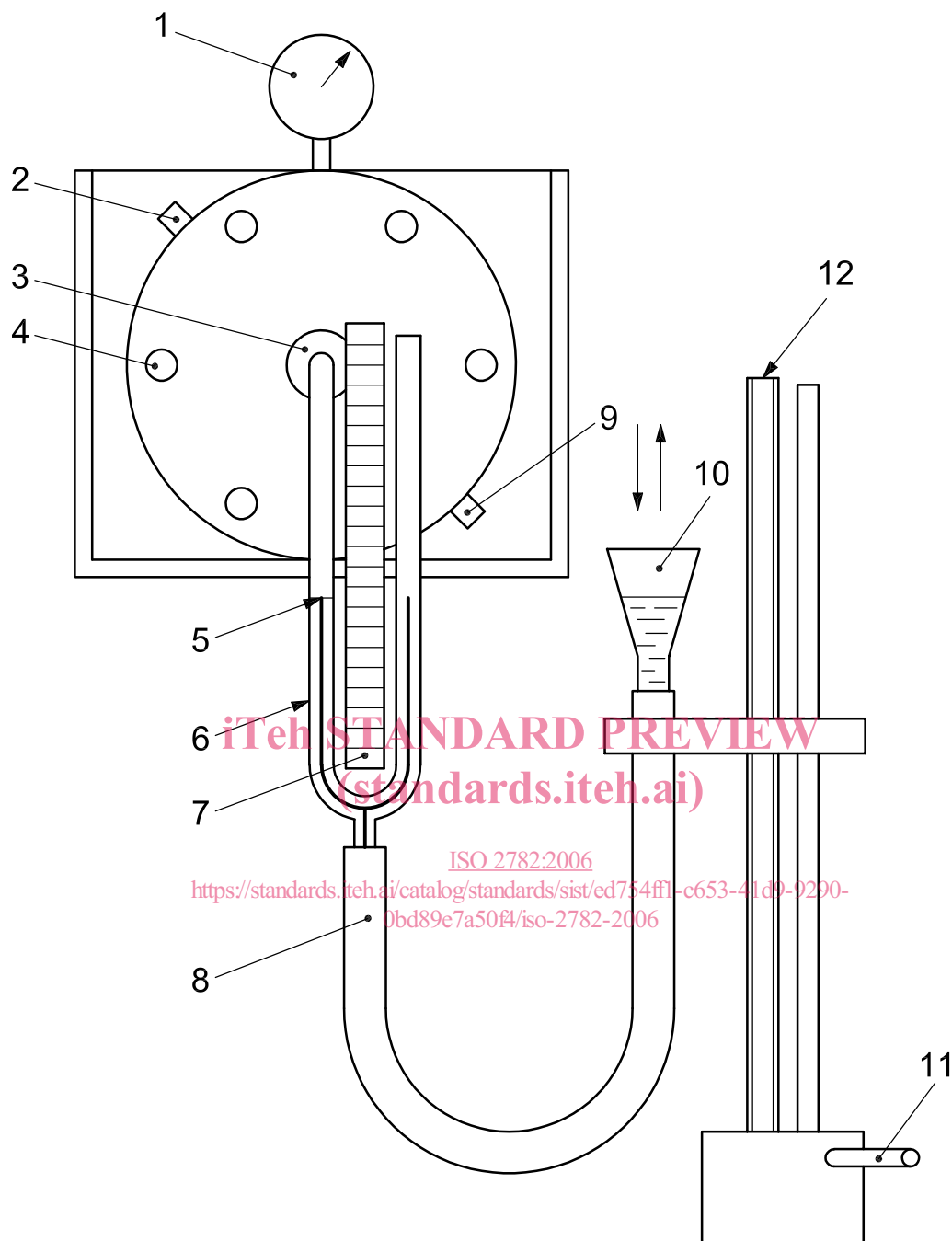
5.5 Device for controlling the test temperature, consisting of a constant-temperature bath or other device capable of maintaining the test cell at the required test temperature to within the specified tolerance (see Clause 8). If a bath is used and the capillary tube is mounted vertically, the walls of the bath shall be arranged so that the outlet from the test cell projects through the side, leaving the connection point for the capillary tube accessible. A number of test cells containing different test pieces may then be connected in turn to the same manometer.



Key

- | | | |
|----------------------|-------------------------------|--------------|
| 1 high-pressure side | 5 clamp | 9 gas inlet |
| 2 low-pressure side | 6 test piece | 10 scale |
| 3 permeable packing | 7 tube and valve for flushing | 11 liquid |
| 4 thermometer | 8 pressure gauge | 12 capillary |

Figure 1 — Apparatus for constant-pressure method with horizontal capillary



STANDARD PREVIEW
 (standards.iteh.ai)
 ISO 2782:2006
<https://standards.iteh.ai/catalog/standards/sist/ed754ff1-c653-41d9-9290-0bd89e7a50f4/iso-2782-2006>

Key

- | | | |
|-------------------|-----------------|--------------------|
| 1 pressure gauge | 5 datum mark | 9 gas-outlet valve |
| 2 gas-inlet valve | 6 U-tube | 10 reservoir |
| 3 by-pass valve | 7 scale | 11 handle |
| 4 clamping screws | 8 flexible tube | 12 screw |

Figure 2 — Apparatus for constant-pressure and constant-volume methods with vertical capillary

6 Test pieces

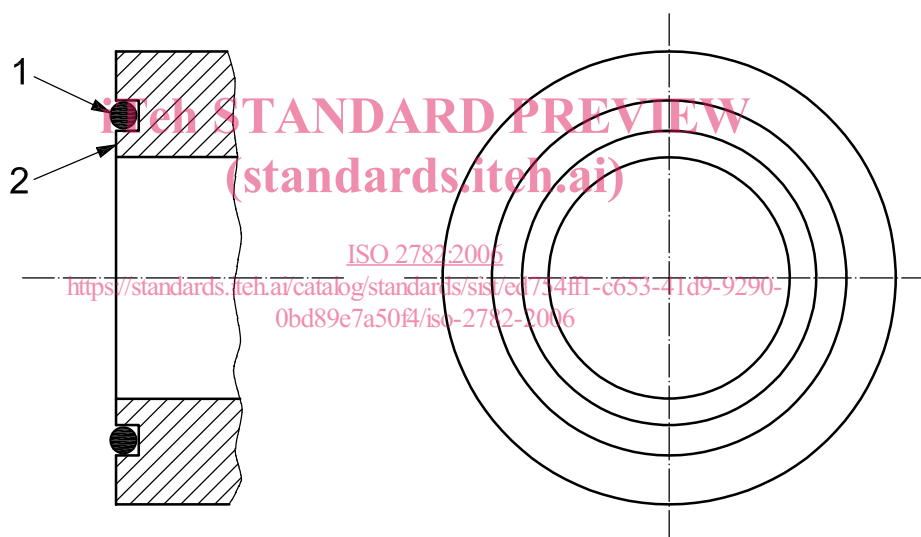
6.1 Shape and dimensions

The test piece shall be a disc of uniform thickness and of dimensions matching those of the test cell. The disc may be either moulded or cut from a sheet or product. It is preferable to use a moulded disc having on each face a circumferential bead which fits into grooves in the two halves of the test cell (see Figure 3). Test pieces of rubber of both high hardness and high thickness shall be prepared with such beads. When the test piece is a flat sheet, suitable O-rings shall be fitted in the grooves in the test cell. The overall variation in thickness of the test piece (excluding the bead) shall not exceed 10 % of the mean thickness.

Suitable dimensions are 50 mm to 155 mm in diameter with an exposed (test) surface of $800 \times 10^{-6} \text{ m}^2$ to $7\,000 \times 10^{-6} \text{ m}^2$ (8 cm^2 to 70 cm^2); the thickness may be between 0,25 mm and 3,0 mm, the smallest thickness being suitable for rubber of low permeability, such as isobutene-isoprene rubber. The test piece shall have no pinholes or other imperfections.

6.2 Number of test pieces

Duplicate test pieces of each rubber material shall be tested.



Key

- 1 O-ring
- 2 inner shoulder of cell forming possible point of contact with test piece

Figure 3 — Surface of test cell

7 Time between vulcanization and testing

The time between vulcanization and testing shall be in accordance with the requirements of ISO 23529.