
**Information technology — Office
equipment — Colour photo test pages for
measurement of ink cartridge yield for
colour photo printing**

*Technologies de l'information — Équipement de bureau — Pages
d'essai pour photographies en couleurs pour le mesurage du
rendement des cartouches d'encre pour l'impression de photographies
en couleurs*

iTeh STANDARD PREVIEW
(standards.iteh.ai)

[ISO/IEC 29103:2011](https://standards.iteh.ai/catalog/standards/sist/d1aed16d-917b-48ab-8658-426f72ee19d6/iso-iec-29103-2011)

<https://standards.iteh.ai/catalog/standards/sist/d1aed16d-917b-48ab-8658-426f72ee19d6/iso-iec-29103-2011>

iTeh STANDARD PREVIEW
(standards.iteh.ai)

[ISO/IEC 29103:2011](https://standards.iteh.ai/catalog/standards/sist/d1aed16d-917b-48ab-8658-426f72ee19d6/iso-iec-29103-2011)

<https://standards.iteh.ai/catalog/standards/sist/d1aed16d-917b-48ab-8658-426f72ee19d6/iso-iec-29103-2011>



COPYRIGHT PROTECTED DOCUMENT

© ISO/IEC 2011

All rights reserved. Unless otherwise specified, no part of this publication may be reproduced or utilized in any form or by any means, electronic or mechanical, including photocopying and microfilm, without permission in writing from either ISO at the address below or ISO's member body in the country of the requester.

ISO copyright office
Case postale 56 • CH-1211 Geneva 20
Tel. + 41 22 749 01 11
Fax + 41 22 749 09 47
E-mail copyright@iso.org
Web www.iso.org

Published in Switzerland

Foreword

ISO (the International Organization for Standardization) and IEC (the International Electrotechnical Commission) form the specialized system for worldwide standardization. National bodies that are members of ISO or IEC participate in the development of International Standards through technical committees established by the respective organization to deal with particular fields of technical activity. ISO and IEC technical committees collaborate in fields of mutual interest. Other international organizations, governmental and non-governmental, in liaison with ISO and IEC, also take part in the work. In the field of information technology, ISO and IEC have established a joint technical committee, ISO/IEC JTC 1.

International Standards are drafted in accordance with the rules given in the ISO/IEC Directives, Part 2.

The main task of the joint technical committee is to prepare International Standards. Draft International Standards adopted by the joint technical committee are circulated to national bodies for voting. Publication as an International Standard requires approval by at least 75 % of the national bodies casting a vote.

Attention is drawn to the possibility that some of the elements of this document may be the subject of patent rights. ISO and IEC shall not be held responsible for identifying any or all such patent rights.

ISO/IEC 29103 was prepared by Joint Technical Committee ISO/IEC JTC 1, *Information technology*, Subcommittee SC 28, *Office equipment*.

STANDARD PREVIEW
(standards.iteh.ai)

[ISO/IEC 29103:2011](https://standards.iteh.ai/catalog/standards/sist/d1aed16d-917b-48ab-8658-426f72ee19d6/iso-iec-29103-2011)

<https://standards.iteh.ai/catalog/standards/sist/d1aed16d-917b-48ab-8658-426f72ee19d6/iso-iec-29103-2011>

Introduction

The purpose of this International Standard is to define a set of test images in a common file format, JPEG, that are used in the testing of cartridge yield for printing of photographs. The defined documents are used in ISO/IEC 29102 to determine the photo yield of cartridges in an inkjet-based printing system.

iTeh STANDARD PREVIEW (standards.iteh.ai)

[ISO/IEC 29103:2011](https://standards.iteh.ai/catalog/standards/sist/d1aed16d-917b-48ab-8658-426f72ee19d6/iso-iec-29103-2011)

<https://standards.iteh.ai/catalog/standards/sist/d1aed16d-917b-48ab-8658-426f72ee19d6/iso-iec-29103-2011>

Information technology — Office equipment — Colour photo test pages for measurement of ink cartridge yield for colour photo printing

IMPORTANT — The electronic file of this document contains colours which are considered to be useful for the correct understanding of the document. Users should therefore consider printing this document using a colour printer.

1 Scope

This International Standard defines colour test pages for the measurement of consumable yield when printing photographs. These pages can be used for any printing technology including multi-function devices that have a digital printing path, i.e. an all-in-one inkjet machine that has digital printing capabilities.

This International Standard provides a set of test files in a common file format, JPEG, which would be used in the testing of consumable yield when printing photographs. The procedure for using these pages for an inkjet printing system is defined in ISO/IEC 29102.

(standards.iteh.ai)

2 Terms and definitions

For the purposes of this document, the following terms and definitions apply.

2.1

photo test suite

collection of the six pages defined in this International Standard

3 Test suite description

The photo test suite is composed of six pages. Each one of these pages is a composite of several photo thumbnail images along with diagnostic targets. The use of thumbnails is to provide a greater coverage of the printable gamut while using actual images and not synthetic images. The files are specified in 1800x1200 pixel and 1800x1350 pixel RGB JPEG format without any attached metadata.

3.1 Image size

Worldwide there are several different “standard” paper sizes for printing snapshot photos. This International Standard alternates between 3:2 and 4:3 images to match the aspect ratio of most digital cameras. “Fit to Print” or “Fit to Page” shall be used for testing with this image set.

Test results generated using one print size cannot be converted to another size.

3.2 Diagnostic Target Description

The diagnostic targets are designed to provide a simple visual tool to determine what colorant is out in a printing system. Figure 1 shows the diagnostic targets that are used in this International Standard, alternating between a horizontal orientation on even pages and a vertical orientation on odd pages.

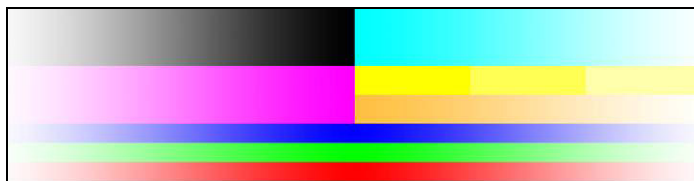


Figure 1 — Out of colorant target

iTeh STANDARD PREVIEW
(standards.iteh.ai)

[ISO/IEC 29103:2011](https://standards.iteh.ai/catalog/standards/sist/d1aed16d-917b-48ab-8658-426f72ee19d6/iso-iec-29103-2011)

<https://standards.iteh.ai/catalog/standards/sist/d1aed16d-917b-48ab-8658-426f72ee19d6/iso-iec-29103-2011>

Annex A (normative)

Test suite thumbnails



<https://standards.itech.ai/catalog/standards/sis/d1aed16d-917b-48ab-8658-426f72ee9d6/iso-iec-29103-2011>

