



SLOVENSKI STANDARD

SIST ISO 5667-22:2011

01-junij-2011

Kakovost vode - Vzorčenje - 22. del: Navodilo za načrtovanje in namestitve vzorčevalnih mest za monitoring podzemne vode

Water quality - Sampling - Part 22: Guidance on the design and installation of groundwater monitoring points

iTeh STANDARD PREVIEW

Qualité de l'eau - Échantillonnage - Partie 22: Lignes directrices pour la conception et l'installation de points de contrôle des eaux souterraines

[SIST ISO 5667-22:2011](https://standards.iteh.ai/catalog/standards/sist/557aaf12-f9bd-4295-b687-078cc0107308/sist-iso-5667-22-2011)

Ta slovenski standard je istoveten z: **ISO 5667-22:2010**

ICS:

| | | |
|-----------|---------------------------|---------------------------------|
| 13.060.10 | Voda iz naravnih virov | Water of natural resources |
| 13.060.45 | Preiskava vode na splošno | Examination of water in general |

SIST ISO 5667-22:2011

en

iTeh STANDARD PREVIEW
(standards.iteh.ai)

[SIST ISO 5667-22:2011](https://standards.iteh.ai/catalog/standards/sist/557aaf42-f9bd-4295-b687-078ee0107308/sist-iso-5667-22-2011)

<https://standards.iteh.ai/catalog/standards/sist/557aaf42-f9bd-4295-b687-078ee0107308/sist-iso-5667-22-2011>

INTERNATIONAL STANDARD

ISO
5667-22

First edition
2010-08-15

Water quality — Sampling —

Part 22: Guidance on the design and installation of groundwater monitoring points

Qualité de l'eau — Échantillonnage —

*Partie 22: Lignes directrices pour la conception et l'installation de points
de contrôle des eaux souterraines*

iTeh STANDARD PREVIEW
(standards.iteh.ai)

SIST ISO 5667-22:2011

<https://standards.iteh.ai/catalog/standards/sist/557aaf42-f9bd-4295-b687-078ee0107308/sist-iso-5667-22-2011>



Reference number
ISO 5667-22:2010(E)

© ISO 2010

PDF disclaimer

This PDF file may contain embedded typefaces. In accordance with Adobe's licensing policy, this file may be printed or viewed but shall not be edited unless the typefaces which are embedded are licensed to and installed on the computer performing the editing. In downloading this file, parties accept therein the responsibility of not infringing Adobe's licensing policy. The ISO Central Secretariat accepts no liability in this area.

Adobe is a trademark of Adobe Systems Incorporated.

Details of the software products used to create this PDF file can be found in the General Info relative to the file; the PDF-creation parameters were optimized for printing. Every care has been taken to ensure that the file is suitable for use by ISO member bodies. In the unlikely event that a problem relating to it is found, please inform the Central Secretariat at the address given below.

iTeh STANDARD PREVIEW (standards.iteh.ai)

[SIST ISO 5667-22:2011](https://standards.iteh.ai/catalog/standards/sist/557aaf42-f9bd-4295-b687-078ee0107308/sist-iso-5667-22-2011)

<https://standards.iteh.ai/catalog/standards/sist/557aaf42-f9bd-4295-b687-078ee0107308/sist-iso-5667-22-2011>

**COPYRIGHT PROTECTED DOCUMENT**

© ISO 2010

All rights reserved. Unless otherwise specified, no part of this publication may be reproduced or utilized in any form or by any means, electronic or mechanical, including photocopying and microfilm, without permission in writing from either ISO at the address below or ISO's member body in the country of the requester.

ISO copyright office
Case postale 56 • CH-1211 Geneva 20
Tel. + 41 22 749 01 11
Fax + 41 22 749 09 47
E-mail copyright@iso.org
Web www.iso.org

Published in Switzerland

Contents

Page

| | |
|---|-----------|
| Foreword | iv |
| Introduction..... | vi |
| 1 Scope | 1 |
| 2 Terms and definitions | 1 |
| 3 Principle..... | 4 |
| 3.1 General | 4 |
| 3.2 Monitoring objectives | 4 |
| 4 Design..... | 6 |
| 4.1 Introduction..... | 6 |
| 4.2 Conceptual model | 6 |
| 4.3 Drilling method and installation size..... | 8 |
| 4.4 Installation design | 11 |
| 4.5 Construction material selection..... | 14 |
| 4.6 Headworks | 21 |
| 4.7 Surface environment..... | 22 |
| 5 Construction phase..... | 23 |
| 5.1 General | 23 |
| 5.2 Record keeping..... | 23 |
| 5.3 Borehole drilling practice | 24 |
| 5.4 Installation practice..... | 25 |
| 5.5 Borehole development..... | 26 |
| 6 Post-construction activities..... | 27 |
| 6.1 Routine inspections and maintenance..... | 27 |
| 6.2 Rehabilitation | 28 |
| 7 Safety precautions | 28 |
| 8 Quality assurance and quality control | 28 |
| Annex A (informative) Common drilling techniques used in GQMP installation | 30 |
| Annex B (informative) Headwork completion design examples | 33 |
| Bibliography..... | 36 |

Foreword

ISO (the International Organization for Standardization) is a worldwide federation of national standards bodies (ISO member bodies). The work of preparing International Standards is normally carried out through ISO technical committees. Each member body interested in a subject for which a technical committee has been established has the right to be represented on that committee. International organizations, governmental and non-governmental, in liaison with ISO, also take part in the work. ISO collaborates closely with the International Electrotechnical Commission (IEC) on all matters of electrotechnical standardization.

International Standards are drafted in accordance with the rules given in the ISO/IEC Directives, Part 2.

The main task of technical committees is to prepare International Standards. Draft International Standards adopted by the technical committees are circulated to the member bodies for voting. Publication as an International Standard requires approval by at least 75 % of the member bodies casting a vote.

Attention is drawn to the possibility that some of the elements of this document may be the subject of patent rights. ISO shall not be held responsible for identifying any or all such patent rights.

ISO 5667-22 was prepared by Technical Committee ISO/TC 147, *Water quality*, Subcommittee SC 6, *Sampling (general methods)*.

ISO 5667 consists of the following parts, under the general title *Water quality — Sampling*:

- *Part 1: Guidance on the design of sampling programmes and sampling techniques*
- *Part 3: Guidance on the preservation and handling of water samples*
- *Part 4: Guidance on sampling from lakes, natural and man-made*
- *Part 5: Guidance on sampling of drinking water from treatment works and piped distribution systems*
- *Part 6: Guidance on sampling of rivers and streams*
- *Part 7: Guidance on sampling of water and steam in boiler plants*
- *Part 8: Guidance on the sampling of wet deposition*
- *Part 9: Guidance on sampling from marine waters*
- *Part 10: Guidance on sampling of waste waters*
- *Part 11: Guidance on sampling of groundwaters*
- *Part 12: Guidance on sampling of bottom sediments*
- *Part 13: Guidance on sampling of sludges from sewage and water treatment works*
- *Part 14: Guidance on quality assurance of environmental water sampling and handling*
- *Part 15: Guidance on the preservation and handling of sludge and sediment samples*
- *Part 16: Guidance on biotesting of samples*

- *Part 17: Guidance on sampling of bulk suspended solids*
- *Part 19: Guidance on sampling of marine sediments*
- *Part 20: Guidance on the use of sampling data for decision making — Compliance with thresholds and classification systems*
- *Part 21: Guidance on sampling of drinking water distributed by tankers or means other than distribution pipes*
- *Part 22: Guidance on the design and installation of groundwater monitoring points*
- *Part 23: Determination of priority pollutants in surface water using passive sampling*

iTeh STANDARD PREVIEW **(standards.iteh.ai)**

[SIST ISO 5667-22:2011](https://standards.iteh.ai/catalog/standards/sist/557aaf42-f9bd-4295-b687-078ee0107308/sist-iso-5667-22-2011)

<https://standards.iteh.ai/catalog/standards/sist/557aaf42-f9bd-4295-b687-078ee0107308/sist-iso-5667-22-2011>

Introduction

The guidance contained in this part of ISO 5667 covers design and installation of groundwater quality monitoring points (GQMPs). It should be used in parallel with other guidance on sampling groundwater and for investigating contaminated or potentially contaminated sites, as any groundwater sampling from such sites is likely to form part of a much wider investigation programme.

Groundwater sampling, in general, is carried out to determine whether or not the groundwater in or beneath a site is contaminated. It can also be used to:

- a) establish whether any migration of contaminants, derived from the site, is occurring and characterize the spatial extent (both laterally and vertically) of any contamination and its form;
- b) determine the direction, rate and variability of groundwater flow and contaminant migration;
- c) provide data for undertaking a risk assessment;
- d) provide an early warning system for the impact of contaminants on the quality of groundwater resources, surface waters and other potential receptors in the vicinity of the site;
- e) monitor the performance and effectiveness of remedial measures or facility design;
- f) demonstrate compliance with licence conditions or collect evidence for regulatory purposes;
- g) assist in the selection of remedial measures and remediation process design.

The design and installation of groundwater monitoring points is critical to ensure that representative measurements are to be made of groundwater quality. A wide range of methods and materials is currently used with no, or very little, guidance on their applicability to the issues being addressed. This results in data and information that are at best difficult to interpret as well as being highly misleading; at worst, they are completely useless. The costs involved in installation, sampling and analysis are significant and the potential impacts of incorrect decisions made on poor quality data even greater. There is therefore a need to develop best practice guidance to establish a framework that can be adopted to ensure a much greater level of confidence in groundwater quality data.

Prescriptive guidance on methods and applications is not possible. Therefore, this guidance provides information on the most commonly applied and available techniques, and lists their advantages, disadvantages and limitations of use where these are known. When considering design of sampling strategies, the properties of potential sources of contaminants, pathways for migration, receptors, the purpose of the investigation and the environment into which the installations are to be emplaced need to be considered.

Water quality — Sampling —

Part 22:

Guidance on the design and installation of groundwater monitoring points

1 Scope

This part of ISO 5667 gives guidelines for the design, construction and installation of groundwater quality monitoring points to help ensure that representative samples of groundwater can be obtained. Within the guidance consideration is given to:

- a) the impact of installation materials on the environment;
- b) the impact of the installation on sample integrity;
- c) the impact of the environment on the installation and the materials used in its construction.

These guidelines allow the impacts to be considered and accounted for when designing a groundwater sampling programme. They also allow an informed assessment of data and results obtained from existing installations, the construction of which can potentially have an impact on sample integrity.

These guidelines are intended for installations and monitoring in different environments including those where background or baseline groundwater conditions are being established or monitored and those in which impacts of contamination are being investigated.

2 Terms and definitions

For the purposes of this document, the following terms and definitions apply.

2.1

annulus

void between any piping, tubing or casing and the piping, tubing or casing immediately surrounding it

2.2

aquifer

geological formation (bed or stratum) of permeable rock or unconsolidated material (e.g. sand and gravels) capable of yielding significant quantities of water

NOTE Adapted from ISO 6107-3:1993^[8], 6.

2.3

bentonite

clay, formed by the decomposition of volcanic ash, that swells as it absorbs water

NOTE 1 Adapted from ISO 6707-1:2004^[9], 3.2.18.

NOTE 2 Refined bentonite is used to make a watertight seal. Sodium is often added in the refining process to enhance the swelling properties.

ISO 5667-22:2010(E)**2.4****dense non-aqueous phase liquids****DNAPL**

organic compounds that have low water solubility and a density greater than that of water, e.g. chlorinated hydrocarbons such as trichloroethane

[ISO 6107-2:2006^[7], 34]

2.5**effective porosity**

proportion of saturated openings or pores within a water-bearing formation which contribute directly to the flow of groundwater

[ISO 6107-2:2006^[7], 43]

NOTE Effective porosity is represented as the ratio of this volume of pore spaces to the total volume of rock.

2.6**geotextile wrap**

synthetic inert woven material wrapped around the outside of the screen to prevent entry of solid particles into the borehole or piezometer without restricting flow of water

2.7**groundwater**

water which is being held in, and can usually be recovered from, a saturated or unsaturated underground formation or artificial deposit such as made ground

NOTE Adapted from ISO 6107-1:2004^[6], 41

2.8**hydraulic conductivity**

property of a water-bearing formation that relates to its capacity to transmit water through its internal, interconnected pathways

[ISO 6107-2:2006^[7], 53]

2.9**light non-aqueous phase liquid****LNAPL**

organic compounds which have low water solubility and a density less than that of water, e.g. petroleum products

[ISO 6107-2:2006^[7], 59]

2.10**multi-level sampler**

single installation for sampling groundwater from discrete depths within the subsurface

[ISO 6107-2:2006^[7], 67]

NOTE The device can be driven directly into the ground, installed in a pre-existing borehole or installed in a purpose-drilled hole. When installed in a borehole, integral packers are used to isolate individual sample ports.

2.11**multiple boreholes**

group of individual boreholes or piezometers installed separately to form a monitoring network adequate for the purposes of an investigation

2.12**nested piezometers**

group of piezometers installed within a single larger diameter borehole

[ISO 6107-2:2006^[7], 69]

NOTE In general, each piezometer is designed to allow sampling over a specific depth interval within the aquifer. Piezometer tips are surrounded by a sand pack which in turn is isolated from adjacent sampling points by installing a permanent impermeable seal between them to eliminate leakage between sample points.

2.13**packer**

device or material for temporarily isolating specified vertical sections within boreholes in order to perform groundwater sampling from discrete zones or locations within the borehole or aquifer

[ISO 6107-2:2006^[7], 75]

2.14**perched groundwater**

isolated body of groundwater, which is limited in lateral and vertical extent, located within the unsaturated zone overlying a much more extensive groundwater body

NOTE Adapted from ISO 6107-2:2006^[7], 79, "perched water table".

2.15**piezometer**

device consisting of a tube or pipe with a porous element or perforated section (surrounded by a filter) on the lower part (piezometer tip), which is installed and sealed into the ground at an appropriate level within the saturated zone for the purposes of water level measurement, hydraulic pressure measurement or groundwater sampling

NOTE Adapted from ISO 6107-2:2006^[7], 81.

2.16**receptor**

(sampling of ground water) entity that is vulnerable to the adverse effect(s) of a hazardous substance or agent

[ISO 6107-2:2006^[7], 100]

NOTE An entity is something that may suffer harm or damage if exposed to the hazard, e.g. humans, animals, aquatic ecosystems, vegetation or building services.

2.17**groundwater response zone**

section of a borehole or groundwater monitoring point that is open to the host strata

2.18**saturated zone**

part of an aquifer in which the pore spaces of the formation are completely water-saturated

[ISO 6107-2:2006^[7], 119]

2.19**well screen**

section of borehole casing that is perforated with either slots or holes to allow the entry of groundwater

ISO 5667-22:2010(E)**2.20****tremmie pipe**

narrow (25 mm to 50 mm) diameter plastic pipe placed down the annulus of an installation for the purpose of adding filter materials and sealants

2.21**unsaturated zone**

part of an aquifer in which the pore spaces of the formation are not totally filled with water

[ISO 6107-2:2006^[7], 150]

3 Principle**3.1 General**

The installation and operation of groundwater monitoring points generally forms one part of an investigation or operation that also involves other technical considerations and objectives. This guidance includes consideration of the broader objectives of the investigation and the purpose of boreholes or monitoring points, and the need to build in flexibility.

The development of a design plan is recommended. This plan should consider all potential factors that can influence monitoring point installation and operation. This includes whether the facility is required for short-term or long-term use, the range of parameters that are to be measured or determined, acceptable tolerances, and quality of data. The design framework in Figure 1 can be used to support the process and allow the relevant factors and key considerations for monitoring point design and construction to be considered.

3.2 Monitoring objectives

SIST ISO 5667-22:2011

The principal objective of all groundwater quality monitoring installations is to obtain a representative groundwater sample to be collected. The purpose for which the sample is being obtained should fall into one of three categories:

- a) strategic: monitoring to obtain background or baseline information on groundwater quality and to identify wide-scale trends in quality due to changing natural conditions or pollution;
- b) defensive: monitoring around a known activity such as a waste disposal site, around a sensitive receptor (e.g. a groundwater dependent wetland) or to monitor remediation of groundwater;
- c) investigative: monitoring to investigate and characterise groundwater below or adjacent to areas of known or suspected contamination — this also includes monitoring of free-phase liquids (e.g. LNAPLs).

Objectives may change during the lifetime of a groundwater quality monitoring installation and they may also have multiple objectives at any one time. The monitoring installation should be designed to be as versatile as possible.

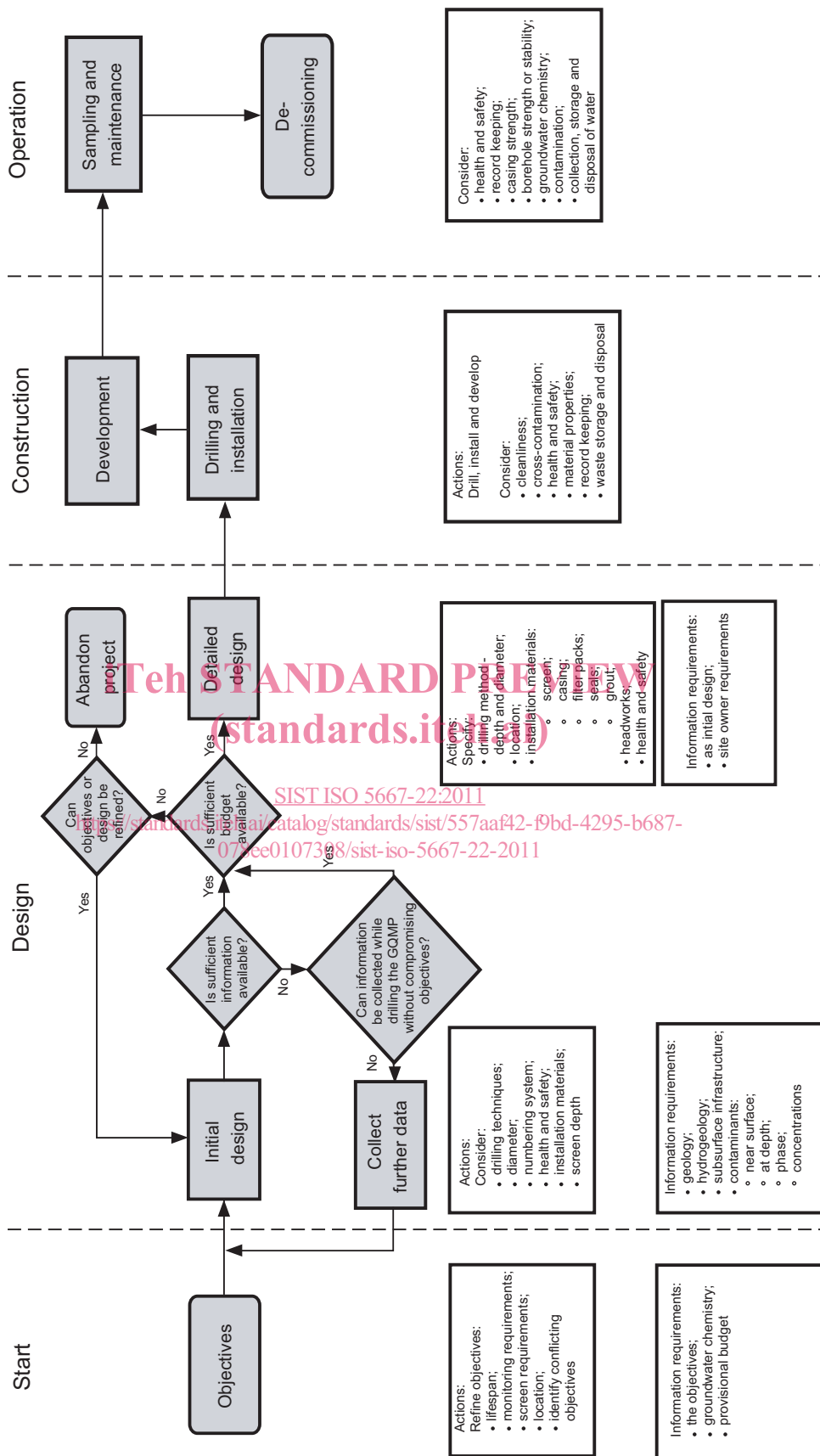


Figure 1 — Design and Installation flow chart