



Standard Practice for Statistical Assessment and Improvement of Expected Agreement Between Two Test Methods that Purport to Measure the Same Property of a Material¹

This standard is issued under the fixed designation D 6708; the number immediately following the designation indicates the year of original adoption or, in the case of revision, the year of last revision. A number in parentheses indicates the year of last reapproval. A superscript epsilon (ϵ) indicates an editorial change since the last revision or reapproval.

1. Scope

1.1 This practice covers statistical methodology for assessing the expected agreement between two standard test methods that purport to measure the same property of a material, and deciding if a simple linear bias correction can further improve the expected agreement. It is intended for use with results collected from an interlaboratory study meeting the requirement of Practice D 6300 or equivalent (for example, ISO 4259). The interlaboratory study must be conducted on at least ten materials that span the intersecting scopes of the test methods, and results must be obtained from at least six laboratories using each method.

NOTE 1—Examples of standard test methods are those developed by voluntary consensus standards bodies such as ASTM, IP/BSI, DIN, AFNOR, CGSB.

1.2 The statistical methodology is based on the premise that a bias correction will not be needed. In the absence of strong statistical evidence that a bias correction would result in better agreement between the two methods, a bias correction is not made. If a bias correction is required, then the *parsimony principle* is followed whereby a simple correction is to be favored over a more complex one.

NOTE 2—Failure to adhere to the parsimony principle generally results in models that are over-fitted and do not perform well in practice.

1.3 The bias corrections of this practice are limited to a constant correction, proportional correction or a linear (proportional + constant) correction.

1.4 The bias-correction methods of this practice are method symmetric, in the sense that equivalent corrections are obtained regardless of which method is bias-corrected to match the other.

1.5 A methodology is presented for establishing the 95 % confidence limit (designated by this practice as the *cross-method reproducibility*) for the difference between two results where each result is obtained by a different operator using

different apparatus and each applying one of the two methods X and Y on identical material, where one of the methods has been appropriately bias-corrected in accordance with this practice.

NOTE 3—Users are cautioned against applying the cross-method reproducibility as calculated from this practice to materials that are significantly different in composition from those actually studied, as the ability of this practice to detect and address sample-specific biases (see 6.8) is dependent on the materials selected for the interlaboratory study. When sample-specific biases are present, the types and ranges of samples may need to be expanded significantly from the minimum of ten as specified in this practice in order to obtain a more comprehensive and reliable 95 % confidence limits for cross method reproducibility that adequately cover the range of sample specific biases for different types of materials.

1.6 This practice is intended for test methods which measure quantitative (numerical) properties of petroleum or petroleum products.

1.7 The statistical methodology outlined in this practice is also applicable for assessing the expected agreement between any two test methods that purport to measure the same property of a material, provided the results are obtained on the same comparison sample set, the standard error associated with each test result is known, the sample set design meets the requirement of this practice, and the statistical degree of freedom of the data set exceeds 30.

1.8 Software program CompTM Version 1.0.21 (ADJD6708) performs the necessary computations prescribed by this practice.

2. Referenced Documents

2.1 ASTM Standards:²

D 5580 Test Method for Determination of Benzene, Toluene, Ethylbenzene, *p/m*-Xylene, *o*-Xylene, C₉ and Heavier Aromatics, and Total Aromatics in Finished Gasoline by Gas Chromatography

D 5769 Test Method for Determination of Benzene, Toluene, and Total Aromatics in Finished Gasolines by Gas

¹ This practice is under the jurisdiction of ASTM Committee D02 on Petroleum Products and Lubricants and is the direct responsibility of Subcommittee D02.94 on Quality Assurance and Statistics.

Current edition approved July 1, 2006. Published July 2006. Originally approved in 2001. Last previous edition approved in 2005 as D 6708–05.

² For referenced ASTM standards, visit the ASTM website, www.astm.org, or contact ASTM Customer Service at service@astm.org. For *Annual Book of ASTM Standards* volume information, refer to the standard's Document Summary page on the ASTM website.

Chromatography/Mass Spectrometry

D 6299 Practice for Applying Statistical Quality Assurance Techniques to Evaluate Analytical Measurement System Performance

D 6300 Practice for Determination of Precision and Bias Data for Use in Test Methods for Petroleum Products and Lubricants

2.2 *ISO Standard*³

ISO 4259 Petroleum Products—Determination and application of precision data in relation to methods of test.

2.3 *ASTM Adjuncts*:

ADJD6708 CompTM Version 1.0.21⁴

3. Terminology

3.1 Definitions:

3.1.1 *closeness sum of squares (CSS)*, n —a statistic used to quantify the degree of agreement between the results from two test methods after bias-correction using the methodology of this practice.

3.1.2 *cross-method reproducibility (R_{XY})*, n —a quantitative expression of the random error associated with the difference between two results obtained by different operators using different apparatus and applying the two methods X and Y , respectively, each obtaining a single result on an identical test sample, when the methods have been assessed and an appropriate bias-correction has been applied in accordance with this practice; it is defined as the 95 % confidence limit for the difference between two such single and independent results.

3.1.2.1 *Discussion*—A statement of cross-method reproducibility must include a description of any bias correction used in accordance with this practice.

3.1.2.2 *Discussion*—Cross-method reproducibility is a meaningful concept only if there are no statistically observable sample-specific relative biases between the two methods, or if such biases vary from one sample to another in such a way that they may be considered random effects. (see 6.7.)

3.1.3 *total sum of squares (TSS)*, n —a statistic used to quantify the information content from the inter-laboratory study in terms of total variation of sample means relative to the standard error of each sample mean.

3.2 Symbols:

X, Y	= single X-method and Y-method results, respectively
X_{ijk}, Y_{ijk}	= single results from the X-method and Y-method round robins, respectively
X_i, Y_i	= means of results on the i^{th} round robin sample
S	= the number of samples in the round robin
L_{Xi}, L_{Yi}	= the numbers of laboratories that returned results on the i^{th} round robin sample
R_X, R_Y	= the reproducibilities of the X- and Y- methods, respectively

s_{RXi}, s_{RYi}	= the reproducibility standard deviations, evaluated at the means of the i^{th} round robin sample
s_{rXi}, s_{rYi}	= the repeatability standard deviations, evaluated at the means of the i^{th} round robin sample
s_{Xi}, s_{Yi}	= standard errors of the means i^{th} round robin sample
\bar{X}, \bar{Y}	= the weighted means of round robins (across samples)
x_i, y_i	= deviations of the means of the i^{th} round robin sample results from \bar{X} and \bar{Y} , respectively.
TSS_X, TSS_Y	= total sums of squares, around \bar{X} and \bar{Y}
F	= a ratio for comparing variances; not unique—more than one use
v_X, v_Y	= the degrees of freedom for reproducibility variances from the round robins
w_i	= weight associated with the difference between mean results (or corrected mean results) from the i^{th} round robin sample
CSS	= weighted sum of squared differences between (possibly corrected) mean results from the round robin
a, b	= parameters of a linear correction: $\hat{Y} = a + bX$
t_1, t_2	= ratios for assessing reductions in sums of squares
R_{XY}	= estimate of cross-method reproducibility
\hat{Y}	= Y-method value predicted from X-method result
\hat{Y}_i	= i^{th} round robin sample Y-method mean, predicted from corresponding X-method mean
e_i	= standardized difference between Y_i and \hat{Y}_i .
L_X, L_Y	= harmonic mean numbers of laboratories submitting results on round robin samples, by X- and Y- methods, respectively
$R_X \hat{r}$	= estimate of cross-method reproducibility, computed from an X-method result only

4. Summary of Practice

4.1 Precisions of the two methods are quantified using inter-laboratory studies meeting the requirements of Practice **D 6300** or equivalent, using at least ten samples in common that span the intersecting scopes of the methods. The arithmetic means of the results for each common sample obtained by each method are calculated. Estimates of the standard errors of these means are computed.

NOTE 4—For established standard test methods, new precision studies generally will be required in order to meet the common sample requirement.

NOTE 5—Both test methods do not need to be run by the same laboratory. If they are, care should be taken to ensure the independent test result requirement of Practice **D 6300** is met (for example, by double-blind testing of samples in random order).

4.2 Weighted sums of squares are computed for the total variation of the mean results across all common samples for each method. These sums of squares are assessed against the

³ Available from American National Standards Institute (ANSI), 25 W. 43rd St., 4th Floor, New York, NY 10036.

⁴ Available from ASTM International Headquarters. Order Adjunct No. ADJD6708.

standard errors of the mean results for each method to ensure that the samples are sufficiently varied before continuing with the practice.

4.3 The closeness of agreement of the mean results by each method is evaluated using appropriate weighted sums of squared differences. Such sums of squares are computed from the data first with no bias correction, then with a constant bias correction, then, when appropriate, with a proportional correction, and finally with a linear (proportional + constant) correction.

4.4 The weighted sums of squared differences for the linear correction is assessed against the total variation in the mean results for both methods to ensure that there is sufficient correlation between the two methods.

4.5 The most parsimonious bias correction is selected.

4.6 The weighted sum of squares of differences, after applying the selected bias correction, is assessed to determine whether additional unexplained sources of variation remain in the residual (that is, the individual Y_i minus bias-corrected X_i) data. Any remaining, unexplained variation is attributed to sample-specific biases (also known as method-material interactions, or matrix effects). In the absence of sample-specific biases, the cross-method reproducibility is estimated.

4.7 If sample-specific biases are present, the residuals (that is, the individual Y_i minus *bias-corrected* X_i) are tested for randomness. If they are found to be consistent with a random-effects model, then their contribution to the cross-method reproducibility is estimated, and accumulated into an all-encompassing cross-method reproducibility estimate.

4.8 Refer to Fig. 1 for a simplified flow diagram of the process described in this practice.

5. Significance and Use

5.1 This practice can be used to determine if a constant, proportional, or linear bias correction can improve the degree of agreement between two methods that purport to measure the same property of a material.

5.2 The bias correction developed in this practice can be applied to a single result (X) obtained from one test method (method X) to obtain a *predicted* result (\hat{Y}) for the other test method (method Y).

NOTE 6—Users are cautioned to ensure that \hat{Y} is within the scope of method Y before its use.

5.3 The cross-method reproducibility established by this practice can be used to construct an interval around \hat{Y} that would contain the result of test method Y , if it were conducted, with about 95 % confidence.

5.4 This practice can be used to guide commercial agreements and product disposition decisions involving test methods that have been evaluated relative to each other in accordance with this practice.

6. Procedure

NOTE 7—For an in-depth statistical discussion of the methodology used in this section, see Appendix X1. For a worked example, see Appendix X2.

6.1 Calculate sample means and standard errors from Practice D 6300 results.

6.1.1 The process of applying Practice D 6300 to the data may involve elimination of some results as outliers, and it may also involve applying a transformation to the data. For this practice, compute the mean results from data that have not been transformed, but with outliers removed in accordance with Practice D 6300. The precision estimates from Practice D 6300 are used to estimate the standard errors of these means.

6.1.2 Compute the means as follows:

6.1.2.1 Let X_{ijk} represent the k^{th} result on the i^{th} common material by the j^{th} lab in the round robin for method X . Similarly for Y_{ijk} . (The i^{th} material is the same for both round robins, but the j^{th} lab in one round robin is not necessarily the same lab as the j^{th} lab in the other round robin.) Let n_{Xij} be the number of results on the i^{th} material from the j^{th} X-method lab, after removing outliers that is, the number of results in cell (i, j) . Let L_{Xi} be the number of laboratories in the X-method round robin that have at least one result on the i^{th} material remaining in the data set, after removal of outliers. Let S be the total number of materials common to both round robins.

6.1.2.2 The mean X-method result for the i^{th} material is:

$$X_i = \frac{1}{L_{Xi}} \sum_j \frac{\sum_k X_{ijk}}{n_{Xij}} \quad (1)$$

where, X_i is the average of the cell averages on the i^{th} material by method X .

6.1.2.3 Similarly, the mean Y-method result for the i^{th} material is:

$$Y_i = \frac{1}{L_{Yi}} \sum_j \frac{\sum_k Y_{ijk}}{n_{Yij}} \quad (2)$$

6.1.3 The standard errors (standard deviations of the means of the results) are computed as follows:

6.1.3.1 If s_{RXi} is the estimated reproducibility standard deviation from the X-method round robin, and s_{rXi} is the estimated repeatability standard deviation, then an estimate of the standard error for X_i is given by:

$$s_{Xi} = \sqrt{\frac{1}{L_{Xi}} \left[s_{RXi}^2 - s_{rXi}^2 \left(1 - \frac{1}{L_{Xi}} \sum_j \frac{1}{n_{Xij}} \right) \right]} \quad (3)$$

NOTE 8—Since repeatability and reproducibility may vary with X , even if the L_{Xi} were the same for all materials and the n_{Xij} were the same for all laboratories and all materials, the $\{s_{Xi}\}$ might still differ from one material to the next.

6.1.3.2 s_{Yi} , the estimated standard error for Y_i , is given by an analogous formula.

6.2 Calculate the total variation sum of squares for each method, and determine whether the samples can be distinguished from each other by both methods.

6.2.1 The total sums of squares (TSS) are given by:

$$TSS_x = \sum_i \left(\frac{X_i - \bar{X}}{s_{Xi}} \right)^2 \quad \text{and} \quad TSS_y = \sum_i \left(\frac{Y_i - \bar{Y}}{s_{Yi}} \right)^2 \quad (4)$$

where:

$$\bar{X} = \frac{\sum_i \left(\frac{X_i}{s_{Xi}^2} \right)}{\sum_i \left(\frac{1}{s_{Xi}^2} \right)} \quad \text{and} \quad \bar{Y} = \frac{\sum_i \left(\frac{Y_i}{s_{Yi}^2} \right)}{\sum_i \left(\frac{1}{s_{Yi}^2} \right)} \quad (5)$$

are weighted averages of all X_i 's and Y_i 's respectively.

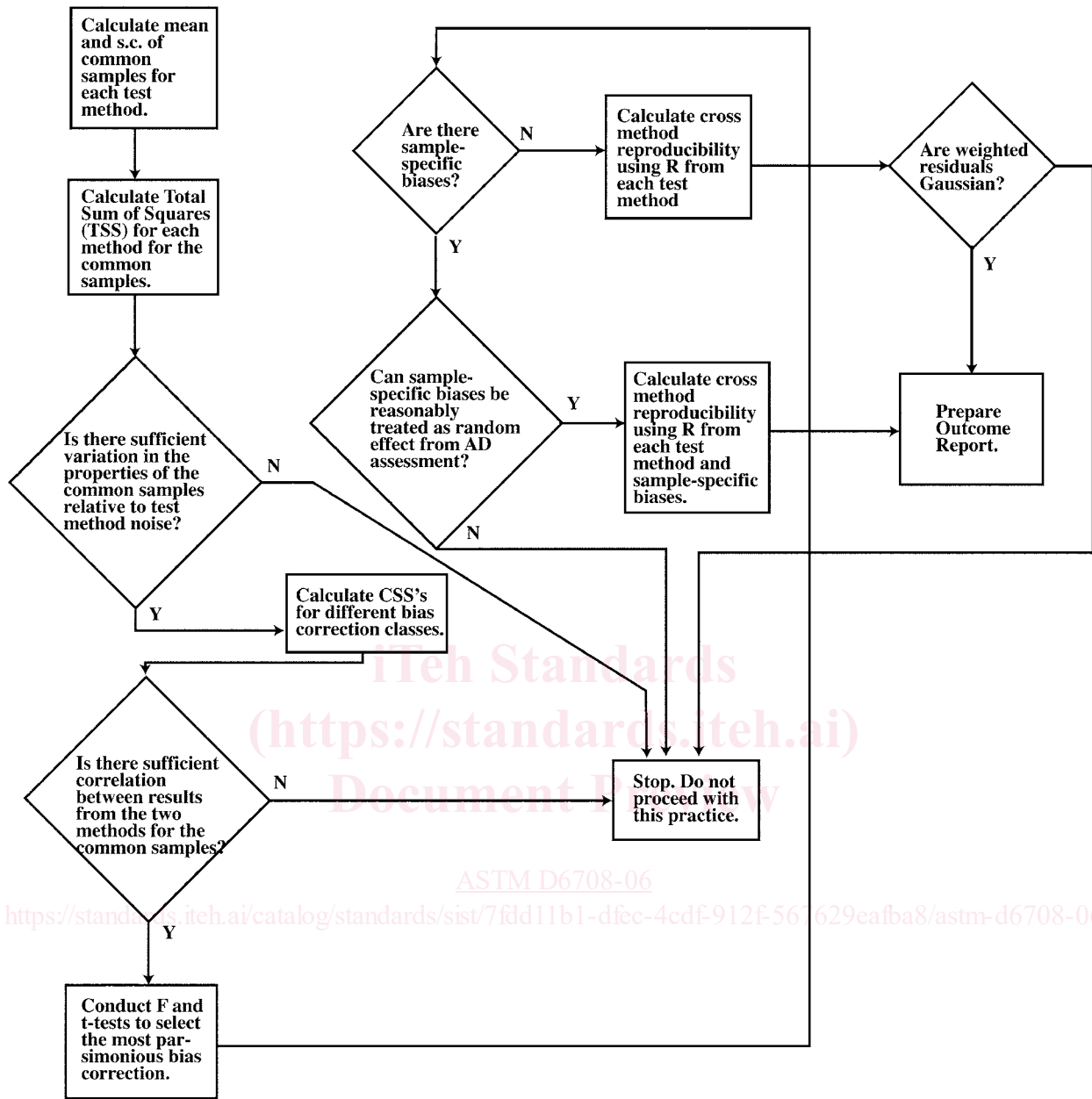


FIG. 1 Simplified Flow Diagram for this Practice

6.2.2 Compare $F = TSS_X/(S-1)$ to the 95th percentile of Fisher's F distribution with $(S-1)$ and ν_X degrees of freedom for the numerator and denominator, respectively, where ν_X is the degrees of freedom for the reproducibility variance (Practice D 6300, paragraph 8.3.3.3) for the X-method round robin. If F does not exceed the 95th percentile, then the X-method is not sufficiently precise to distinguish among the S samples. Do not proceed with this practice, as meaningful results cannot be produced.

6.2.3 In a similar manner, compare $F = TSS_Y/(S-1)$ to the 95th percentile of Fisher's F distribution, using the degrees of freedom of the reproducibility variance of the Y-method, ν_Y , in place of ν_X . Similarly, do not proceed with this practice if F does not exceed the 95th percentile.

NOTE 9—If one or both of the conditions of 6.2.2 and 6.2.3 are satisfied only marginally, it is unlikely that this practice will produce meaningful results since in 6.4, the quantity $(TSS_X + TSS_Y)$ will be compared to a closeness sum of squares computed in the next section, to determine whether the methods are sufficiently correlated. It will be difficult to meet that correlation requirement if the samples are too similar to one another.

6.3 Calculate the closeness sum of squares (CSS) statistic for each of the following classes of bias-correction methodology.

6.3.1 Class 0—No bias correction.

6.3.1.1 Compute the weights (w_i) for each sample i :

$$w_i = \frac{1}{S_{Yi}^2 + S_{Xi}^2} \quad (6)$$

6.3.1.2 Computes *CSS*:

$$CSS_0 = \sum_i w_i (X_i - Y_i)^2 \quad (7)$$

6.3.2 *Class 1a*—Constant bias correction.

6.3.2.1 Using the weights (w_i) from 6.3.1.1, compute the constant bias correction (a):

$$a = \frac{\sum_i w_i (Y_i - X_i)}{\sum_i w_i} = \frac{\sum_i w_i Y_i}{\sum_i w_i} - \frac{\sum_i w_i X_i}{\sum_i w_i} \quad (8)$$

6.3.2.2 Compute *CSS*:

$$CSS_{1a} = \sum_i w_i (Y_i - (X_i + a))^2 \quad (9)$$

6.3.3 *Class 1b*—Proportional bias correction.

6.3.3.1 The computations of this subsection (6.3.3) are appropriate only if both of the following conditions apply: (1) the measured property assumes only non-negative values, and (2) a property value of *zero* has a physical significance (for example, concentrations of specific constituents). In addition, it is not mandatory but highly recommended that $\max(Y_i) \geq 2 \min(Y_i)$.

6.3.3.2 The computations involve iterative calculation of the weights (w_i) and the proportional correction (b).

6.3.3.3 Set $b = 1$.

6.3.3.4 Compute the weights (w_i) for each sample i :

$$w_i = \frac{1}{s_{Y_i}^2 + b^2 s_{X_i}^2} \quad (10)$$

6.3.3.5 Calculate b_0 :

$$b_0 = \frac{\sum_i w_i X_i Y_i}{\sum_i w_i X_i^2 - \sum_i w_i^2 s_{X_i}^2 (Y_i - b X_i)^2} \quad (11)$$

6.3.3.6 If $|b - b_0| > .001 b$, replace b with b_0 and go back to 6.3.3.4. Otherwise, the iteration can be stopped, as further iteration will not produce meaningful improvement. Replace b with b_0 and go on to 6.3.3.7.

6.3.3.7 Calculate *CSS*_{1b}:

$$CSS_{1b} = \sum_i w_i (Y_i - b X_i)^2 \quad (12)$$

6.3.4 *Class 2*—Linear (proportional + constant) bias correction.

6.3.4.1 This involves iterative calculation of the weights (w_i), the weighted means of X_i 's and Y_i 's, and the proportional term (b).

6.3.4.2 Set $b = 1$.

6.3.4.3 Compute the weights (w_i) for each sample i :

$$w_i = \frac{1}{s_{Y_i}^2 + b^2 s_{X_i}^2} \quad (13)$$

6.3.4.4 Calculate the weighted means of $\{X_i\}$ and $\{Y_i\}$ respectively:

$$\bar{X} = \frac{\sum_i w_i X_i}{\sum_i w_i} \quad (14)$$

$$\bar{Y} = \frac{\sum_i w_i Y_i}{\sum_i w_i}$$

6.3.4.5 Calculate the deviations from the weighted means:

$$x_i = X_i - \bar{X} \quad (15)$$

$$y_i = Y_i - \bar{Y}$$

6.3.4.6 Calculate b_0 :

$$b_0 = \frac{\sum_i w_i x_i y_i}{\sum_i w_i x_i^2 - \sum_i w_i^2 s_{X_i}^2 (Y_i - b X_i)^2} \quad (16)$$

6.3.4.7 If $|b - b_0| > .001 b$, replace b with b_0 and go back to 6.3.4.3, computing new values for the weights $\{w_i\}$, \bar{X} , \bar{Y} , $\{x_i\}$, $\{y_i\}$, and b_0 . Otherwise, the iteration can be stopped, as further iteration will not produce meaningful improvement. Replace b with b_0 and go to 6.3.4.8.

6.3.4.8 Calculate *CSS*₂ and a :

$$CSS_2 = \sum_i w_i (y_i - b x_i)^2 \quad (17)$$

$$a = \bar{Y} - b \bar{X} \quad (18)$$

6.4 Test whether the methods are sufficiently correlated.

6.4.1 Calculate the *F*-statistic:

$$F = \frac{(TSS_X + TSS_Y - CSS_2)/S}{CSS_2/(S - 2)} \quad (19)$$

6.4.2 Compare F to the 95th percentile of Fisher's F distribution with S and $S-2$ degrees of freedom in the numerator and denominator, respectively.

6.4.2.1 If F is less than the 95th percentile value, then, this practice concludes that the methods are too discordant to permit use of the results from one method to predict those of the other.

6.4.2.2 If F is greater than the tabled value, proceed to 6.5.

6.5 Conduct tests to select the most parsimonious bias correction class needed.

6.5.1 The closeness sums of squares for differences from each class of bias correction are used to select the most parsimonious bias correction class that can improve the expected degree of agreement between the \hat{Y} (the predicted Y-method result using X-method result) and the actual Y-method result on the same material. The classes of bias correction and the associated *CSS* as calculated earlier are repeated in the following table.

Bias Correction Class	<i>CSS</i>
<i>Class 0</i> —no correction	<i>CSS</i> ₀
<i>Class 1a</i> —constant bias correction	<i>CSS</i> _{1a}
<i>Class 1b</i> —proportional bias correction (when appropriate)	<i>CSS</i> _{1b}
<i>Class 2</i> —linear (proportional + constant bias correction)	<i>CSS</i> ₂

6.5.2 To determine whether *any* bias correction (*Classes 1a, 1b or 2* above) can significantly improve the expected agreement between the two methods, calculate the following ratio:

$$F = \frac{(CSS_0 - CSS_2)/2}{CSS_2/(S - 2)} \quad (20)$$

6.5.2.1 Compare F to the upper 95th percentile of the F distribution with 2 and $S-2$ degrees of freedom for the numerator and denominator, respectively.

6.5.2.2 If the calculated F is smaller, conclude that a bias correction of *Class 1a, 1b, or 2* does not sufficiently improve the expected agreement between the two methods, relative to *Class 0* (no bias correction). Proceed to 6.6.

6.5.2.3 If the calculated F is larger, conclude that a correction can improve the expected agreement between the two methods, and continue in 6.5.3.

6.5.3 If the F -value calculated in 6.5.2 is larger than the 95th percentile of F , compute the following t -ratios:

$$t_1 = \sqrt{\frac{CSS_0 - CSS_1}{CSS_2/(S-2)}} \quad (21)$$

$$t_2 = \sqrt{\frac{CSS_1 - CSS_2}{CSS_2/(S-2)}}$$

where, CSS_1 is the lesser of CSS_{1a} or CSS_{1b} , provided the latter is appropriate and has been calculated.

6.5.3.1 Compare t_2 to the upper 97.5th percentile of the t distribution with $S-2$ degrees of freedom.

6.5.3.2 If t_2 is larger, conclude that a bias correction of *Class 2* (proportional + constant correction) can improve the expected agreement over that of a single term (constant or proportional) correction alone (*Class 1*). Proceed to 6.6.

6.5.3.3 If t_2 is smaller than the t -percentile, compare t_1 to the same upper 97.5th percentile of the t distribution with ($S-2$) degrees of freedom.

6.5.3.4 If t_1 is larger, conclude that a single term bias correction of *Class 1* is preferred to a bias correction of *Class 2*. Use the constant correction unless CSS_{1b} is appropriate and is smaller than CSS_{1a} . Proceed to 6.6.

6.5.3.5 If t_1 is smaller, then neither t_1 nor t_2 is statistically significant. A bias correction of *Class 2* is preferred over single-term (constant or proportional) correction of *Class 1*.

6.6 Test for existence of sample-specific biases.

6.6.1 Compare the CSS of the bias-correction class selected in 6.5 to the 99th percentile value of a chi-square distribution with ν degrees of freedom

where:

$\nu = S$ for *Class 0* (-no bias) correction,

$\nu = S - 1$ for *Class 1a* or *Class 1b* (constant or proportional) correction

$\nu = S - 2$ for *Class 2* (linear) correction

6.6.2 If the CSS is smaller than the chi-square percentile, it is reasonable to conclude that there are no sample-specific biases, that is, that there are no other sources of variation besides measurement error. Calculate the cross method reproducibility (R_{XY}) as follows:

$$R_{XY} = \sqrt{\frac{R_Y^2 + b^2 R_X^2}{2}} \quad (22)$$

where:

$b =$ the coefficient of the appropriate bias correction. (For *Class 0* and *Class 1a* bias corrections, $b=1$.)

6.6.2.1 *Examine Residuals for Normality to Confirm R_{XY} Predictability*—Since R_{XY} confidence level is based on a Normal model assumption, assess the reasonableness of this assumption by examination of the distribution of the residuals. While there are numerous statistical tools available to perform this assessment, this practice recommends use of the Anderson-Darling normality test, based on its simplicity and ease of use. It is not the intent of this practice to exclude other tools for this purpose.

6.6.2.2 Let \hat{Y}_i be the Y -method values predicted from the corresponding X -method mean values X_i , using the bias-correction selected in 6.5. The (standardized) residuals ϵ_i are given by:

$$\epsilon_i = \sqrt{w_i}(Y_i - \hat{Y}_i) \quad (23)$$

where:

$W_i =$ the appropriate weights from 6.3.1-6.3.4.

6.6.2.3 Calculate the Anderson Darling (AD) statistic on the residuals ϵ_i . (Refer to Practice D 6299 for guidance on calculation and interpretation of this statistic.)

6.6.2.4 If the AD statistic is not significant at the 5 % significance level, conclude that the residuals can be reasonably modeled by the Normal distribution.

6.6.2.5 If the AD statistic is significant at the 5 % level, there is strong evidence that the R_{XY} is not predictable. Application of this practice is considered terminated at this point, as the statistical evidence suggests that a single cross-method reproducibility (R_{XY}) cannot be found that is applicable to all materials covered by the intersecting scope of both test methods. It is reasonable to conclude that, at least for some materials, the test method are not measuring the same property.

6.6.3 If the CSS is larger than the chi-square percentile (see 6.6.1), there is strong evidence that biases between the methods have not been adequately corrected by the bias-corrections of 6.3. In other words, the relative biases are not consistent across the S common samples of the round robins. The user may wish to investigate whether the biases can be attributed to other observable properties of the samples. Or he or she may wish to restrict attention to a smaller class of materials for the purpose of establishing a cross-method reproducibility. Such investigations are beyond the scope of this practice, as the issues typically are not statistical in nature. This practice does recommend investigating whether it is reasonable to treat the sample-specific biases as random effects, as described in 6.7.

6.7 *Treatment of Sample-Specific Relative Bias as a Variance Component:*

6.7.1 If the CSS exceeds the 95th percentile value of the appropriate chi-square distribution (see 6.6.1), there is strong evidence that sources other than measurement error are contributing towards the variation of the expected agreement between the two methods. In this practice, these sources are attributed to sample-specific effects (also known as matrix effects or method-material interactions). In some cases these sample-specific effects can be treated as *random* effects, and hence can be incorporated as an additional source of variation into a cross method reproducibility as described in this section. Note that, even when it is appropriate to treat these sample-specific effects as random, the additional variation may cause the cross-method reproducibility to be far larger than the root mean square of the reproducibilities of the methods (Eq 22).

6.7.2 Examine residuals to assess reasonableness of *random effect* assumption.

6.7.2.1 Assess the reasonableness of the assumption that the sample-specific effects can be treated as random effect by examination of the distribution of the residuals. While there are numerous statistical tools available to perform this assessment, this practice recommends use of the Anderson-Darling normality test, based on its simplicity and ease of use. It is not the intent of this practice to exclude other tools for this purpose.