



Standard Test Method for Fire Tests of Through-Penetration Fire Stops¹

This standard is issued under the fixed designation E 814; the number immediately following the designation indicates the year of original adoption or, in the case of revision, the year of last revision. A number in parentheses indicates the year of last reapproval. A superscript epsilon (ϵ) indicates an editorial change since the last revision or reapproval.

This standard has been approved for use by agencies of the Department of Defense.

INTRODUCTION

Characteristically fire spreads from one building compartment to another by the collapse of a barrier, or by openings through which flames or hot gases may pass, or by transfer of sufficient heat to ignite combustibles beyond the barrier. Test Methods E 119 describe the method to be used to measure the fire-resistive performance of these barriers.

However, various techniques of providing for the distribution of services within a structure sometimes require that openings be made in fire-resistive walls and floors to allow the passage of such penetrating items as cables, conduits, pipes, trays, and ducts through to the adjacent compartment. Fire-stop material is installed into these openings to resist the spread of fire.

The performance of through-penetration fire stops should be measured and specified according to a common standard that describes the method of fire exposure and rating criteria.

1. Scope

1.1 This test method is applicable to through-penetration fire stops of various materials and construction. Fire stops are intended for use in openings in fire-resistive walls and floors that are evaluated in accordance with Test Methods E 119.

1.2 Tests conducted in conformance with this test method record fire-stop performance during the test exposure; but such tests shall not be construed to determine suitability of the fire stop for use after test exposure.

1.3 This test method also measures the resistance of fire stops to an external force stimulated by a hose stream. However, this test method shall not be construed as determining the performance of the fire stop during actual fire conditions when subjected to forces such as failure of cable support systems and falling debris.

1.4 The intent of this test method is to develop data to assist others in determining the suitability of the fire stops for use where fire resistance is required.

1.5 *This standard is used to measure and describe the response of materials, products, or assemblies to heat and flame under controlled conditions, but does not by itself incorporate all factors required for fire-hazard or fire-risk assessment of materials, products, or assemblies under actual fire conditions.*

1.6 *This standard does not purport to address all of the safety concerns, if any, associated with its use. It is the responsibility of the user of this standard to establish appropriate safety and health practices and determine the applicability of regulatory limitations prior to use.*

1.7 The text of this standard references notes and footnotes which provide explanatory material. These notes and footnotes (excluding those in tables and figures) shall not be considered requirements of the standard.

2. Referenced Documents

2.1 *ASTM Standards:*²

E 119 Test Methods for Fire Tests of Building Construction and Materials

E 2226 Practice for Application of Hose Stream

3. Terminology

3.1 *Definition:*

3.1.1 *fire stop*—a through-penetration fire stop is a specific construction consisting of the materials that fill the opening around penetrating items such as cables, cable trays, conduits, ducts, and pipes and their means of support through the wall or floor opening to prevent spread of fire.

3.2 *Definitions of Terms Specific to This Standard:*

¹ This method is under the jurisdiction of Committee E05 on Fire Standards and is the direct responsibility of Subcommittee E05.11 on Construction Assemblies.

Current edition approved July 15, 2006. Published August 2006. Originally approved in 1981. Last previous edition approved in 2002 as E 814 – 02.

² For referenced ASTM standards, visit the ASTM website, www.astm.org, or contact ASTM Customer Service at service@astm.org. For *Annual Book of ASTM Standards* volume information, refer to the standard's Document Summary page on the ASTM website.

3.2.1 *test specimen*—the fire stop being tested.

3.2.2 *test assembly*—the wall or floor into which the test specimen(s) is (are) mounted or installed.

4. Summary of Test Method

4.1 This method of testing through-penetration fire stops exposes fire stops to a standard temperature-time fire, and to a subsequent application of a hose stream.

4.2 Ratings are established on the basis of the period of resistance to the fire exposure, prior to the first development of through openings, flaming on the unexposed surface, limiting thermal transmission criterion, and acceptable performance under application of a hose stream.

5. Significance and Use

5.1 This test method is used to determine the performance of a fire stop with respect to exposure to a standard time-temperature fire test and a hose stream test. The performance of a fire stop is dependent upon the specific assembly of materials tested including the number, type, and size of penetrations and the floors or walls in which it is installed.

5.2 Two ratings are established for each fire stop. An *F* rating is based upon flame occurrence on the unexposed surface, while the *T* rating is based upon the temperature rise as well as flame occurrence on the unexposed side of the fire stop. These ratings, together with detailed performance data such as the location of through-openings and temperatures of penetrating items are intended to be one factor in assessing performance of fire stops.

6. Control of Fire Tests

6.1 *Time-Temperature Curve*—The fire environment within the furnace shall be in accordance with the standard time-temperature curve shown in Fig. 1. The points on the curve that determine its character are:

- Ambient at 0 min
- 1000°F (538°C) at 5 min
- 1300°F (704°C) at 10 min
- 1550°F (843°C) at 30 min
- 1700°F (927°C) at 60 min
- 1850°F (1010°C) at 120 min
- 2000°F (1093°C) at 240 min
- 2300°F (1260°C) at 480 min or over

6.2 Furnace Temperatures:

6.2.1 The temperature fixed by the curve shall be the average temperature obtained from the readings of thermocouples symmetrically disposed and distributed within the test furnace to show the temperature near all parts of the assembly. Use a minimum of three thermocouples, with not fewer than five thermocouples per 100 ft² (9.29 m²) of floor surface, and not fewer than nine thermocouples per 100 ft² of wall specimen surface.

6.2.2 Enclose the thermocouples in sealed protection tubes of such materials and dimensions that the time constant of the protected thermocouple assembly lies within the range (see Note 1) from 300 to 400 s. The exposed length of the pyrometer tube and thermocouple in the furnace chamber shall be not less than 12 in. (300 mm). Use of other types of protection tubes or pyrometers is acceptable provided that temperature measurements obtained in accordance with Fig. 1 are within the limit of accuracy that applies for furnace temperature measurements.

NOTE 1—A typical thermocouple meeting these time-constant requirements may be fabricated by fusion-welding the twisted ends of No. 18 B and S gage (0.040 in.) (1.02 mm) Chromel-Alumel wires, mounting the leads in porcelain insulators and inserting the assembly so the thermocouple bead is 0.50 in. (13 mm) from the sealed end of a standard weight, nominal 1/2-in. iron, steel, or Inconel pipe. (Inconel is a trademark of Inco Alloys, Inc., 3800 Riverside Dr., P.O. Box 1958, Huntington, WV 25720.) The time constant for this and for several other thermocouple assemblies was measured in 1976. The time constant may also be calculated from knowledge of its physical and thermal properties. See Research Report RR:E05-1001, available from ASTM Headquarters.

6.2.3 For floors, place the junction of the thermocouples 12 in. (300 mm) away from the exposed face of the assembly. In the case of walls, place the thermocouples 6.0 in. (150 mm) away from the exposed face.

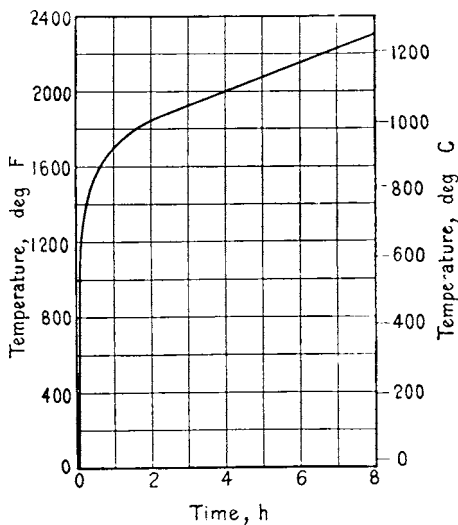
6.2.4 Read the temperature at intervals not exceeding 5 min during the first 120 min. Thereafter, the intervals shall not exceed 10 min.

6.2.5 The accuracy of the furnace control shall be such that the area under the temperature-time curve, obtained by averaging the results from the pyrometer or thermoelectric device readings, is within 10 % of the corresponding area under the standard temperature-time curve shown in Fig. 1 for fire tests of 60 min or less duration; within 7.5 % for those over 60 min and not more than 120 min; and within 5 % for tests exceeding 120 min in duration.

6.3 Unexposed Surface Temperatures:

6.3.1 Make at least one measurement at each of the following locations on the unexposed surface of the test sample and floor or wall assembly as shown in Fig. 2.

6.3.2 Additional temperature measurements are made at the discretion of the testing agency to obtain representative information on the performance of the fire stops.



NOTE—For a closer definition of the temperature-time curve, see Annex A1.

FIG. 1 Temperature-Time Curve

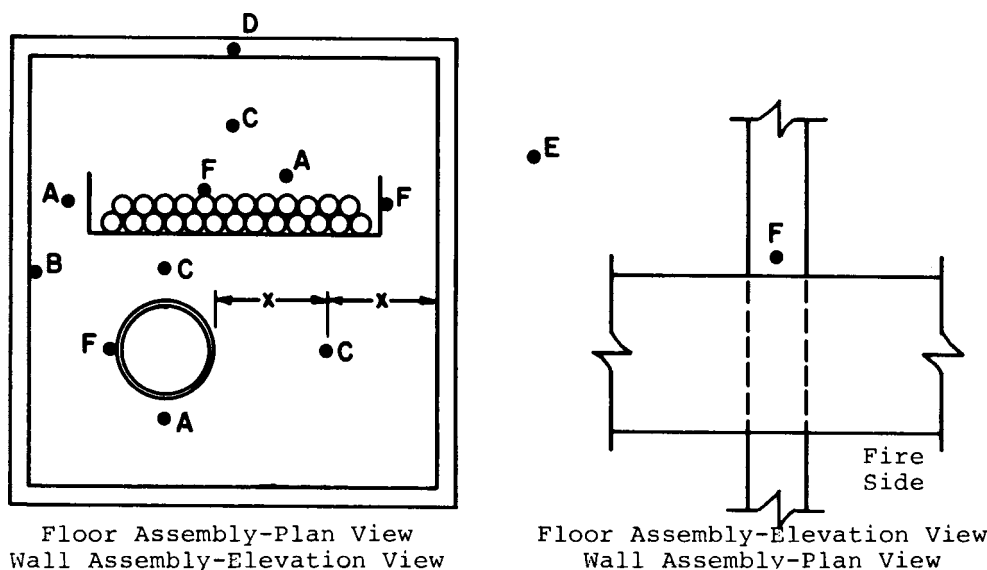


FIG. 2 Temperature Measurement Locations

Legend:

- A—At a point on the surface of the fire stop 1 in. (25 mm) from one through-penetrating item for each type of penetrating item employed in the field of the fire stop. If the grouping of penetrating items through the test sample prohibits placement of the thermocouple pad, the thermocouple shall not be required.
- B—At a point on the fire stop surface at the periphery of the fire stop.
- C—At a minimum of three points on the fire stop surface approximately equidistant from a penetrating item or group of penetrating items in the field of the fire stop and the periphery.
- D—At one point on any frame that is installed about the perimeter of the opening.
- E—At one point on the unexposed surface of the wall or floor that is a minimum of 12 in. (305 mm) from any opening.
- F—At one point on each type of through-penetrating item. If the through-penetrating item is insulated or coated on the unexposed side, the thermocouple shall be located on the exterior surface of the insulation or coating. If the coating or insulation does not extend the full length of the penetrating item on the unexposed side, an additional thermocouple shall be installed on the penetrating item 1.0 in. (25.4 mm) beyond the termination of the insulation or coating.

6.3.3 Measure temperatures on the surface of the fire stop and assembly with thermocouples placed under flexible pads specified in Annex A2. The pads shall be held firmly against the surface and shall fit closely about the thermocouples. The thermocouple junction shall be located under the center of the pads. The thermocouple leads under the pads shall be not heavier than No. 18 B and S gage (0.040 in.) (1.02 mm) and shall be electrically insulated with heat-resistant moisture-resistant coverings.

6.3.4 Measure temperatures of each type and size of penetrating item with at least one thermocouple located 1.0 in. (25.4 mm) from the unexposed surface of the fire-stop material. The thermocouple bead shall be held firmly against the penetrating item. The thermocouple leads shall not be heavier than No. 22 B and S gage (0.025 in.) (0.635 mm) and shall be electrically insulated with heat-resistant and moisture-resistant coverings. The pads as described above shall be held firmly against the penetrating item and shall fit closely about the thermocouples.

6.3.5 Temperature readings shall be taken at intervals not exceeding 15 min until a reading exceeding 212°F (100°C) has been obtained at any one point. Thereafter, at the discretion of the testing body, the readings shall be taken more frequently, but the intervals need not be less than 5 min.

6.4 Differential Pressure:

6.4.1 The pressure differential between the exposed and unexposed surfaces of the test assembly, as defined in 3.2.2, shall be measured at two points 0.78 in. (20 mm) from the exposed surface of the test assembly as follows:

6.4.1.1 *Walls*—At two points along the vertical center line. The two points shall be separated by a vertical distance that is equal to or greater than one-half of the height of the test assembly.

6.4.1.2 *Floors*—Two points along the longitudinal center line at a distance of $\frac{1}{4} \pm \frac{1}{8}$ from the center of the floor where L equals the length of the floor.

6.4.2 The pressure-measuring probes shall be a Tee-shaped probe or a tube probe and shall be manufactured from stainless steel or other suitable material.

6.4.3 Measure the pressure by means of a manometer or equivalent transducer. The manometer or transducer shall be capable of reading 0.01-in. H₂O (2.5-Pa) increments with a measurement precision of 0.005 in. H₂O (1.25 Pa).

6.4.4 The furnace shall be controlled such that the differential pressure between the exposed and the unexposed surfaces of the test assembly complies with either 6.4.4.1 or 6.4.4.2.

6.4.4.1 *Standard Pressure Condition*—Except for the first 10 min. of the test, the furnace pressure shall be at least 0.01 in. wg (2.5 Pa) greater than the pressure on the unexposed side of the test assembly at the following locations:

- (1) *Walls*—At the lowest elevation of the test specimen (see Note 2).
- (2) *Floors*—At the location of the pressure-measuring probes.

NOTE 2—A supplementary pressure probe, in addition to the two probes specified in 6.4.1.1, may be used to determine compliance with this requirement.

6.4.4.2 *Unique Pressure Condition*—The differential pressure shall be specified by the test sponsor. The furnace shall be controlled such that the specified differential pressure is maintained throughout the duration of the test, excluding the first 10 min., within 20 % of the specified pressure.

7. Test Specimen

7.1 Construction and Size:

7.1.1 The construction of the test fire stops shall be of sufficient size and include all conduits, pipes, cables (jacket types, sizes, conductor types, percent fills), required supports, or other through-penetrating items so as to produce a representative fire stop for which evaluation is being sought. Install and test fire stops in each construction type for which ratings are being sought.

7.1.2 Install through-penetrating items so that they extend 12 in. (300 mm) on the exposed side and 36 in. (900 mm) on the unexposed side unless either or both of these extensions are not typical of actual field installations. In such cases, the installation shall be representative of actual field installations. Support the extended portion of through-penetrating items on the unexposed side so as to minimize relative movement between the through-penetrating item and the restraining frame in which the test assembly is mounted. Cap or otherwise seal the individual ends of through-penetrating items on the exposed side. When the through-penetrating item is a closed system that in actual field practice is not vented or open to the atmosphere, the through-penetrating item shall be capped or sealed on the unexposed side. In such cases, a pressure relief hole shall be provided through the cap or seal on the unexposed side. Otherwise, through-penetrating items shall not be capped or sealed on the unexposed side.

7.1.3 The periphery of the fire stop shall not be closer than 1½ times the thickness of the test assembly or a minimum of 12 in. (300 mm) to the furnace edge, whichever is greater (see [Note 3](#)).

NOTE 3—The distance between fire stop periphery and furnace edge may be reduced if the testing agency demonstrates and reports that the edge effects do not affect the results.

8. Protection and Conditioning

8.1 Prior to fire test, condition the floor or wall assembly and fire stops to provide, a moisture condition representative of that existing in similar construction in buildings. For the purposes of standardization, this condition is established at equilibrium resulting from drying in an ambient atmosphere of 50 % relative humidity at 73°F (23°C). However, with some assemblies and fire stops it is difficult or impossible to achieve such uniformity. Therefore, floor or wall assemblies and fire stops are eligible for testing when their dampest portion has achieved a moisture content corresponding to drying to equilibrium with air in the range from 50 to 75 % relative humidity at 73 ± 5°C (23 ± 3°C). If the assembly or fire stops dried in a heated building fail to meet these requirements after a 12-month conditioning period, or if the nature of the construction is such that drying of the assembly or fire stop interior will be prevented by hermetic sealing, these requirements are waived, except as to attainment of the required strength as

described in [9.1](#), and the assembly or fire stop is tested in the condition in which it then exists.

NOTE 4—A method for determining the relative humidity within a hardened concrete specimen with electric sensing elements is described in Appendix I of a paper by C.A. Manzel, “A Method for Determining the Moisture Condition of Hardened Concrete in Terms of Relative Humidity,” *Proceedings*, ASTM, Vol 55, 1955, p. 1083. A similar procedure with electric sensing elements can be used to determine the relative humidity within fire test assemblies and fire stops made with other materials.

8.2 Protect the testing equipment, specimen, and assembly undergoing the fire test from any condition of wind or weather that is capable of leading to abnormal results. The ambient air temperature at the beginning of the test shall be within the range from 50 to 90°F (10 to 32°C). The velocity of air across the unexposed surface measured just before the test begins shall not exceed 4.4 ft/s (1.3 m/s) as determined by an anemometer placed at right angles to the unexposed surface. If mechanical ventilation is employed during the test, do not direct an air stream across the surface of the specimen.

9. Conduct of Tests

9.1 *Time of Testing*—Do not test the test specimen until the test assembly has developed sufficient strength to retain the fire stops securely in position.

9.2 *Fire Test*—Continue the test until the evaluation period being sought is reached or until the rating criteria of Section 10 are satisfied.

9.3 Hose Stream Test:

9.3.1 Subject a duplicate specimen to a fire-exposure test for a period equal to one half of that indicated as the resistance period in the fire test, but not more than 60 min, immediately after which subject the specimen to the impact, erosion, and cooling effects of a hose stream as described in Practice [E 2226](#), and in accordance with the pressures and durations specified in [Table 1](#).

9.3.2 When requested by the test sponsor, and with the advice and consent of the testing body, the hose stream test shall be made on the specimen subjected to the fire test immediately following the fire test.

10. Rating Criteria

10.1 F Rating:

10.1.1 A fire stop shall have met the requirements for the *F* rating when it remains in the opening during the fire test and hose stream test and the following conditions are met.

TABLE 1 Pressure and Duration—Hose Stream Test^A

| Resistance Period | Water Pressure at Base of Nozzle, psi (kPa) | Duration of Application, s/ft ² (m ²) of Exposed Area |
|---------------------------------------|---|--|
| 240 min and over if less than 480 min | 45 (310) | 3.0 (32) |
| 120 min and over if less than 240 min | 30 (210) | 1.5 (16) |
| 90 min and over if less than 120 min | 30 (210) | 0.90 (10) |
| 60 min and over if less than 90 min | 30 (210) | 0.60 (6) |
| Less than 60 min if desired | 30 (210) | 0.60 (6) |

^AWhen a single fire stop is tested, calculation of the area to be exposed to the hose stream may include more than the outside dimensions of the fire stop if the hose stream uniformly traverses that area. Where multiple test fire stops are tested in the same wall or floor assembly, the rectangular area encompassing all of the fire stops shall be considered as the exposed area since the hose stream must traverse this calculated area during its application.

10.1.2 The fire stops shall have withstood the fire test for the rating period by preventing the passage of flame through openings, or the occurrence of flaming on any element of the unexposed side of the fire stops.

10.1.3 During the hose stream test, the fire stop shall not develop any opening that allows a projection of water from the stream beyond the unexposed side.

10.2 T Rating:

10.2.1 A fire stop shall have met the requirements for the *T* rating when it remains in the opening during the fire test and hose stream test and the following conditions are met.

10.2.1.1 The transmission of heat through the fire stops during the rating period shall not have been such as to raise the temperature of any thermocouple on the unexposed surface of the fire stop or on any penetrating item more than 325°F (181°C) above its initial temperature. Also, the fire stops shall have withstood the fire test during the rating period by preventing the passage of flame through openings, or the occurrence of flaming on any element of the unexposed side of the fire stops.

10.2.1.2 During the hose stream test, the fire stop shall not develop any opening that allows a projection of water from the stream beyond the unexposed side.

11. Report

11.1 Report results in accordance with the performance in the tests prescribed in this test method. Express the results in time periods of resistance to passage of flame to the nearest integral minute. Reports shall include the following:

11.1.1 Description of the assembly and materials; identify and describe penetrating items of the test fire stop. Drawings depicting geometry, exact size (length, width, thickness), and location of fire stops within the test assembly.

11.1.2 The relative humidities of the test assembly and fire stop materials, if applicable.

11.1.3 The furnace and the unexposed side temperatures for the duration of the standard fire test.

11.1.4 The *F* and *T* ratings for each fire stop in the time period of resistance.

11.1.5 The location of pressure probes and the differential pressures between the exposed and unexposed surfaces of the test assembly measured during the fire test. When the test is

conducted with a unique pressure condition in accordance with 6.4.4.2, the report shall state the basis for the specified pressure.

11.1.6 Record observations of significant details of the behavior of the fire stops during the test and after the furnace fire is extinguished. These shall include cracks, deformation, flaming, and smoke issuance. Also, these include continued burning within the fire stop after termination of the fire test.

11.2 When the indicated fire stop rating period is 60 min or over, a correction shall be applied for variation of the furnace exposure from the prescribed, where it will affect the rating, by multiplying the indicated period by two thirds of the difference in area between the curve of average furnace temperature and the standard curve for the first three fourths of the period and dividing the product by the area between the standard curve above a base line of 68°F (20°C) for the same part of the indicated period, the latter area increased by 54°F·h or 30°C·h (3240°F·min or 1800°C·min), to compensate for the thermal lag of the furnace thermocouples during the first part of the test. For fire exposure in the test higher than standard, the indicated rating period shall be increased by the amount of the correction and be similarly decreased for fire exposure below surface. The correction is expressed as follows:

$$C = \frac{2I(A - A_s)}{3(A_s + L)} \quad (1)$$

where:

- C* = correction in the same units as *I*,
- I* = indicated fire-resistance period,
- A* = area under the curve of indicated average furnace temperature for the first three fourths of the indicated period,
- A_s* = area under the standard furnace curve for the same part of the indicated period, and
- L* = lag correction in the same units as *A* and *A_s* (54°F·h or 30°C·h; 3240°F·min or 1782°C·min).

12. Precision and Bias

12.1 The precision and bias of this test method have not been determined.

ANNEXES
(Mandatory Information)
A1. STANDARD TEMPERATURE-TIME CURVE FOR CONTROL OF FIRE TESTS

| Time h:min | Temperature, °F | Area Above 68°F Base | | Temperature, °C | Area Above 20°C Base | |
|---------------|--------------------|----------------------|--------|--------------------|----------------------|-------|
| | | °F-min | °F-h | | °C-min | °C-h |
| 0:00 | 68 | 00 | 0 | 20 | 00 | 0 |
| 0:05 | 1 000 | 2 330 | 39 | 538 | 1 290 | 22 |
| 0:10 | 1 300 | 7 740 | 129 | 704 | 4 300 | 72 |
| 0:15 | 1 399 | 14 150 | 236 | 760 | 7 860 | 131 |
| 0:20 | 1 462 | 20 970 | 350 | 795 | 11 650 | 194 |
| 0:25 | 1 510 | 28 050 | 468 | 821 | 15 590 | 260 |
| 0:30 | 1 550 | 35 360 | 589 | 843 | 19 650 | 328 |
| 0:35 | 1 584 | 42 860 | 714 | 862 | 23 810 | 397 |
| 0:40 | 1 613 | 50 510 | 842 | 878 | 28 060 | 468 |
| 0:45 | 1 638 | 58 300 | 971 | 892 | 32 390 | 540 |
| 0:50 | 1 661 | 66 200 | 1 103 | 905 | 36 780 | 613 |
| 0:55 | 1 681 | 74 220 | 1 237 | 916 | 41 230 | 687 |
| 1:00 | 1 700 | 82 330 | 1 372 | 927 | 45 740 | 762 |
| 1:05 | 1 718 | 90 540 | 1 509 | 937 | 50 300 | 838 |
| 1:10 | 1 735 | 98 830 | 1 647 | 946 | 54 910 | 915 |
| 1:15 | 1 750 | 107 200 | 1 787 | 955 | 59 560 | 993 |
| 1:20 | 1 765 | 115 650 | 1 928 | 963 | 64 250 | 1 071 |
| 1:25 | 1 779 | 124 180 | 2 070 | 971 | 68 990 | 1 150 |
| 1:30 | 1 792 | 132 760 | 2 213 | 978 | 73 760 | 1 229 |
| 1:35 | 1 804 | 141 420 | 2 357 | 985 | 78 560 | 1 309 |
| 1:40 | 1 815 | 150 120 | 2 502 | 991 | 83 400 | 1 390 |
| 1:45 | 1 826 | 158 890 | 2 648 | 996 | 88 280 | 1 471 |
| 1:50 | 1 835 | 167 700 | 2 795 | 1 001 | 93 170 | 1 553 |
| 1:55 | 1 843 | 176 550 | 2 942 | 1 006 | 98 080 | 1 635 |
| 2:00 | 1 850 | 185 440 | 3 091 | 1 010 | 103 020 | 1 717 |
| 2:10 | 1 862 | 203 330 | 3 389 | 1 017 | 112 960 | 1 882 |
| 2:20 | 1 875 | 221 330 | 3 689 | 1 024 | 122 960 | 2 049 |
| 2:30 | 1 888 | 239 470 | 3 991 | 1 031 | 133 040 | 2 217 |
| 2:40 | 1 900 | 257 720 | 4 295 | 1 038 | 143 180 | 2 386 |
| 2:50 | 1 912 | 276 110 | 4 602 | 1 045 | 153 390 | 2 556 |
| 3:00 | 1 925 | 294 610 | 4 910 | 1 052 | 163 670 | 2 728 |
| 3:10 | 1 938 | 313 250 | 5 221 | 1 059 | 174 030 | 2 900 |
| 3:20 | 1 950 | 332 000 | 5 533 | 1 066 | 184 450 | 3 074 |
| 3:30 | 1 962 | 350 890 | 5 848 | 1 072 | 194 940 | 3 249 |
| 3:40 | 1 975 | 369 890 | 6 165 | 1 079 | 205 500 | 3 425 |
| 3:50 | 1 988 | 389 030 | 6 484 | 1 086 | 216 130 | 3 602 |
| 4:00 | 2 000 | 408 280 | 6 805 | 1 093 | 226 820 | 3 780 |
| 4:10 | 2 012 | 427 670 | 7 128 | 1 100 | 237 590 | 3 960 |
| 4:20 | 2 025 | 447 180 | 7 453 | 1 107 | 248 430 | 4 140 |
| 4:30 | 2 038 | 466 810 | 7 780 | 1 114 | 259 340 | 4 322 |
| 4:40 | 2 050 | 486 560 | 8 110 | 1 121 | 270 310 | 4 505 |
| 4:50 | 2 062 | 506 450 | 8 441 | 1 128 | 281 360 | 4 689 |
| 5:00 | 2 075 | 526 450 | 8 774 | 1 135 | 292 470 | 4 874 |
| 5:10 | 2 088 | 546 580 | 9 110 | 1 142 | 303 660 | 5 061 |
| 5:20 | 2 100 | 566 840 | 9 447 | 1 149 | 314 910 | 5 248 |
| 5:30 | 2 112 | 587 220 | 9 787 | 1 156 | 326 240 | 5 437 |
| 5:40 | 2 125 | 607 730 | 10 129 | 1 163 | 337 630 | 5 627 |
| 5:50 | 2 138 | 628 360 | 10 473 | 1 170 | 349 090 | 5 818 |
| 6:00 | 2 150 | 649 120 | 10 819 | 1 177 | 360 620 | 6 010 |
| 6:10 | 2 162 | 670 000 | 11 167 | 1 184 | 372 230 | 6 204 |
| 6:20 | 2 175 | 691 010 | 11 517 | 1 191 | 383 900 | 6 398 |
| 6:30 | 2 188 | 712 140 | 11 869 | 1 198 | 395 640 | 6 594 |