



## Mobile Edge Computing (MEC); Mobile Edge Management; Part 1: System, host and platform management

### *Disclaimer*

The present document has been produced and approved by the Mobile Edge Computing (MEC) ETSI Industry Specification Group (ISG) and represents the views of those members who participated in this ISG. It does not necessarily represent the views of the entire ETSI membership.

---

**Reference**

DGS/MEC-0010-1SysHosPlatfMgmt

---

**Keywords**

management, MEC

**ETSI**

650 Route des Lucioles  
F-06921 Sophia Antipolis Cedex - FRANCE

Tel.: +33 4 92 94 42 00 Fax: +33 4 93 65 47 16

Siret N° 348 623 562 00017 - NAF 742 C  
Association à but non lucratif enregistrée à la  
Sous-Préfecture de Grasse (06) N° 7803/88

---

**Important notice**

The present document can be downloaded from:

<http://www.etsi.org/standards-search>

The present document may be made available in electronic versions and/or in print. The content of any electronic and/or print versions of the present document shall not be modified without the prior written authorization of ETSI. In case of any existing or perceived difference in contents between such versions and/or in print, the only prevailing document is the print of the Portable Document Format (PDF) version kept on a specific network drive within ETSI Secretariat.

Users of the present document should be aware that the document may be subject to revision or change of status.

Information on the current status of this and other ETSI documents is available at

<https://portal.etsi.org/TB/ETSIDeliverableStatus.aspx>

If you find errors in the present document, please send your comment to one of the following services:

<https://portal.etsi.org/People/CommiteeSupportStaff.aspx>

---

**Copyright Notification**

No part may be reproduced or utilized in any form or by any means, electronic or mechanical, including photocopying and microfilm except as authorized by written permission of ETSI.

The content of the PDF version shall not be modified without the written authorization of ETSI.

The copyright and the foregoing restriction extend to reproduction in all media.

© ETSI 2017.

All rights reserved.

**DECT™**, **PLUGTESTS™**, **UMTS™** and the ETSI logo are trademarks of ETSI registered for the benefit of its Members.

**3GPP™** and **LTE™** are trademarks of ETSI registered for the benefit of its Members and of the 3GPP Organizational Partners.

**oneM2M** logo is protected for the benefit of its Members.

**GSM®** and the GSM logo are trademarks registered and owned by the GSM Association.

# Contents

Intellectual Property Rights .....	5
Foreword.....	5
Modal verbs terminology.....	5
1 Scope .....	6
2 References .....	6
2.1 Normative references .....	6
2.2 Informative references.....	7
3 Definitions and abbreviations.....	7
3.1 Definitions.....	7
3.2 Abbreviations .....	7
4 Overview .....	8
5 Specification level requirements .....	8
5.1 Requirements.....	8
5.1.1 Requirements for reference point Mm2 .....	8
5.1.1.1 Requirements related to the mobile edge host.....	8
5.1.1.1.1 Configuration Management requirements .....	8
5.1.1.1.2 Fault Management requirements .....	8
5.1.1.2 Requirements related to the mobile edge applications .....	9
5.1.1.2.1 Configuration Management requirements .....	9
5.1.1.2.2 State Management requirements .....	9
6 Information flows.....	9
6.1 Configuration management flows .....	9
6.1.1 Creation and deletion of managed objects representing application instances .....	9
6.1.2 Configuration of DNS rules.....	11
6.1.3 Activation of DNS rules.....	11
6.1.4 Deactivation of DNS rules.....	12
6.1.5 Configuration of traffic rules .....	12
6.1.6 Activation of traffic rules.....	12
6.1.7 Deactivation of traffic rules .....	12
6.2 Fault management flows .....	12
7 Information models and interfaces .....	12
7.1 Applicable reference points .....	12
7.2 Information models .....	13
7.2.1 Mobile edge host information model.....	13
7.2.1.1 Imported information entities and local labels .....	13
7.2.1.2 Class diagram .....	13
7.2.1.2.1 Relationships .....	13
7.2.1.2.2 Inheritance .....	15
7.2.1.3 Information Object Class definitions .....	15
7.2.1.3.1 CoveredENB .....	15
7.2.1.3.2 ServedENB .....	16
7.2.1.3.3 MobileEdgeHostFunction .....	16
7.2.1.3.4 MobileEdgePlatform.....	16
7.2.1.3.5 MobileEdgeApplication.....	17
7.2.1.3.6 MobileEdgePlatformService .....	18
7.2.1.3.7 MobileEdgeApplicationService .....	18
7.2.1.3.8 RNIService.....	18
7.2.1.3.9 LocationService .....	19
7.2.1.3.10 TrafficRule.....	19
7.2.1.3.11 DNSRule .....	20
7.2.1.4 Attribute definitions .....	20
7.2.1.5 Common notifications.....	24

7.2.1.5.1	Alarm notifications .....	24
7.2.1.5.2	Configuration notifications .....	24
7.3	Interfaces .....	25
7.3.1	Fault Management interface .....	25
7.3.2	Configuration Management interface (passive part) .....	25
7.3.3	Configuration Management interface (active part) .....	25
8	Data models and interface protocols .....	25
8.1	Data models .....	25
8.2	Interface protocols .....	25
History	.....	26

**iTeh STANDARD PREVIEW**  
(standards.iteh.ai)

Full standard:  
<https://standards.iteh.ai/catalog/standards/sist/02b457e4-fa95-4e3e-bb22-2572929950e4/etsi-gs-mec-010-1-v1.1.1-2017-10>

---

# Intellectual Property Rights

## Essential patents

IPRs essential or potentially essential to the present document may have been declared to ETSI. The information pertaining to these essential IPRs, if any, is publicly available for **ETSI members and non-members**, and can be found in ETSI SR 000 314: "*Intellectual Property Rights (IPRs); Essential, or potentially Essential, IPRs notified to ETSI in respect of ETSI standards*", which is available from the ETSI Secretariat. Latest updates are available on the ETSI Web server (<https://ipr.etsi.org/>).

Pursuant to the ETSI IPR Policy, no investigation, including IPR searches, has been carried out by ETSI. No guarantee can be given as to the existence of other IPRs not referenced in ETSI SR 000 314 (or the updates on the ETSI Web server) which are, or may be, or may become, essential to the present document.

## Trademarks

The present document may include trademarks and/or tradenames which are asserted and/or registered by their owners. ETSI claims no ownership of these except for any which are indicated as being the property of ETSI, and conveys no right to use or reproduce any trademark and/or tradename. Mention of those trademarks in the present document does not constitute an endorsement by ETSI of products, services or organizations associated with those trademarks.

---

# Foreword

This Group Specification (GS) has been produced by ETSI Industry Specification Group (ISG) Mobile Edge Computing (MEC).

The present document is part 1 of a multi-part deliverable covering Mobile Edge Management, as identified below:

- Part 1: "System, host and platform management";
- Part 2: "Application lifecycle, rules and requirements management".

---

# Modal verbs terminology

In the present document "**shall**", "**shall not**", "**should**", "**should not**", "**may**", "**need not**", "**will**", "**will not**", "**can**" and "**cannot**" are to be interpreted as described in clause 3.2 of the [ETSI Drafting Rules](#) (Verbal forms for the expression of provisions).

"**must**" and "**must not**" are **NOT** allowed in ETSI deliverables except when used in direct citation.

# 1 Scope

The present document defines the management of the mobile edge system, mobile edge hosts and mobile edge platforms. This includes platform configuration, performance and fault management, application monitoring, remote service configuration and service control, information gathering regarding the platform features, available services, and available virtualised resources.

## 2 References

### 2.1 Normative references

References are either specific (identified by date of publication and/or edition number or version number) or non-specific. For specific references, only the cited version applies. For non-specific references, the latest version of the referenced document (including any amendments) applies.

Referenced documents which are not found to be publicly available in the expected location might be found at <https://docbox.etsi.org/Reference>.

NOTE: While any hyperlinks included in this clause were valid at the time of publication, ETSI cannot guarantee their long term validity.

The following referenced documents are necessary for the application of the present document.

- [1] ETSI TS 132 302: "Digital cellular telecommunications system (Phase 2+) (GSM); Universal Mobile Telecommunications System (UMTS); LTE; Telecommunication management; Configuration Management (CM); Notification Integration Reference Point (IRP); Information Service (IS) (3GPP TS 32.302)".
- [2] ETSI TS 132 602: "Digital cellular telecommunications system (Phase 2+) (GSM); Universal Mobile Telecommunications System (UMTS); LTE; Telecommunication management; Configuration Management (CM); Basic CM Integration Reference Point (IRP); Information Service (IS) (3GPP TS 32.602)".
- [3] ETSI TS 132 662: "Digital cellular telecommunications system (Phase 2+) (GSM); Universal Mobile Telecommunications System (UMTS); LTE; Telecommunication management; Configuration Management (CM); Kernel CM Information Service (IS) (3GPP TS 32.662)".
- [4] ETSI TS 132 111-2: "Digital cellular telecommunications system (Phase 2+) (GSM); Universal Mobile Telecommunications System (UMTS); LTE; Telecommunication management; Fault Management; Part 2: Alarm Integration Reference Point (IRP); Information Service (IS) (3GPP TS 32.111-2)".
- [5] ETSI TS 132 332: "Digital cellular telecommunications system (Phase 2+) (GSM); Universal Mobile Telecommunications System (UMTS); LTE; Telecommunication management; Notification Log (NL) Integration Reference Point (IRP); Information Service (IS) (3GPP TS 32.332)".
- [6] ETSI TS 128 622: "Universal Mobile Telecommunications System (UMTS); LTE; Telecommunication management; Generic Network Resource Model (NRM) Integration Reference Point (IRP); Information Service (IS) (3GPP TS 28.622)".
- [7] ETSI TS 136 300: "LTE; Evolved Universal Terrestrial Radio Access (E-UTRA) and Evolved Universal Terrestrial Radio Access Network (E-UTRAN); Overall description; Stage 2 (3GPP TS 36.300)".
- [8] ETSI GS MEC 010-2: "Mobile Edge Computing (MEC); Mobile Edge Management; Part 2: Application lifecycle, rules and requirements management".
- [9] ETSI TS 136 413: "LTE; Evolved Universal Terrestrial Radio Access Network (E-UTRAN); S1 Application Protocol (S1AP) (3GPP TS 36.413)".

- [10] ETSI TS 132 103: "Digital cellular telecommunications system (Phase 2+) (GSM); Universal Mobile Telecommunications System (UMTS); LTE; Telecommunication management; Integration Reference Point (IRP) overview and usage guide (3GPP TS 32.103)".
- [11] ETSI TS 132 150: "Digital cellular telecommunications system (Phase 2+) (GSM); Universal Mobile Telecommunications System (UMTS); LTE; Telecommunication management; Integration Reference Point (IRP) Concept and definitions (3GPP TS 32.150)".
- [12] ETSI TS 132 151: "Digital cellular telecommunications system (Phase 2+) (GSM); Universal Mobile Telecommunications System (UMTS); LTE; Telecommunication management; Integration Reference Point (IRP) Information Service (IS) template (3GPP TS 32.151)".
- [13] ETSI TS 132 152: "Digital cellular telecommunications system (Phase 2+) (GSM); Universal Mobile Telecommunications System (UMTS); LTE; Telecommunication management; Integration Reference Point (IRP) Information Service (IS) Unified Modelling Language (UML) repertoire (3GPP TS 32.152)".
- [14] ETSI TS 132 153: "Digital cellular telecommunications system (Phase 2+) (GSM); Universal Mobile Telecommunications System (UMTS); LTE; Telecommunication management; Integration Reference Point (IRP) technology specific templates, rules and guidelines (3GPP TS 32.153)".
- [15] ETSI TS 132 157: "Universal Mobile Telecommunications System (UMTS); LTE; Telecommunication management; Integration Reference Point (IRP) Information Service (IS) template (3GPP TS 32.157)".
- [16] ETSI TS 132 156: "Universal Mobile Telecommunications System (UMTS); LTE; Telecommunication management; Fixed Mobile Convergence (FMC) model repertoire (3GPP TS 32.156)".
- [17] ETSI TS 132 300: "Digital cellular telecommunications system (Phase 2+) (GSM); Universal Mobile Telecommunications System (UMTS); LTE; Telecommunication management; Configuration Management (CM); Name convention for Managed Objects (3GPP TS 32.300)".

## 2.2 Informative references

References are either specific (identified by date of publication and/or edition number or version number) or non-specific. For specific references, only the cited version applies. For non-specific references, the latest version of the referenced document (including any amendments) applies.

NOTE: While any hyperlinks included in this clause were valid at the time of publication, ETSI cannot guarantee their long term validity.

The following referenced documents are not necessary for the application of the present document but they assist the user with regard to a particular subject area.

- [i.1] ETSI GS MEC 001: "Mobile Edge Computing (MEC) Terminology".

---

## 3 Definitions and abbreviations

### 3.1 Definitions

For the purposes of the present document, the terms and definitions given in ETSI GS MEC 001 [i.1] apply.

### 3.2 Abbreviations

For the purposes of the present document, the abbreviations given in ETSI GS MEC 001 [i.1] and the following apply:

CM	Configuration Management
DN	Distinguished Name

DNS	Domain Name System
FQDN	Fully Qualified Domain Name
GS	Group Specification
IOC	Information Object Class
IP	Internet Protocol
IRP	Integration Reference Point
IS	Information Service
ISG	Industry Specification Group
MEC	Mobile Edge Computing
MEPM	Mobile Edge Platform Manager
NL	Notification Log
NM	Network Manager
OSS	Operations Support System
PLMN	Public Land Mobile Network
RAB	Radio Access Bearer
UE	User Equipment
UMTS	Universal Mobile Telecommunications System

---

## 4 Overview

The management interfaces are designed according to the IRP methodology defined in [10], [11], [12], [13], [14], [15] and [16]. Naming conventions for managed object instances are specified in [17].

---

## 5 Specification level requirements

### 5.1 Requirements

#### 5.1.1 Requirements for reference point Mm2

##### 5.1.1.1 Requirements related to the mobile edge host

###### 5.1.1.1.1 Configuration Management requirements

**REQ-MM2-MEH-CM-1:** The Mm2 reference point shall support a capability allowing the OSS to retrieve the information model of the mobile edge host, or parts thereof, from the mobile edge platform manager.

**REQ-MM2-MEH-CM-2:** The Mm2 reference point shall support a capability allowing the mobile edge platform manager to notify changes related to the information model of the mobile edge host to the OSS.

**REQ-MM2-MEH-CM-3:** The Mm2 reference point shall support a capability allowing the OSS to configure the mobile edge host.

**REQ-MM2-MEH-CM-4:** The Mm2 reference point shall support a capability allowing the OSS to configure the DNS rules.

**REQ-MM2-MEH-CM-5:** The Mm2 reference point shall support a capability allowing the OSS to configure the traffic rules.

###### 5.1.1.1.2 Fault Management requirements

**REQ-MM2-MEH-FM-1:** The Mm2 reference point shall support a capability allowing the mobile edge platform manager to send mobile edge platform related alarms to the OSS.

**REQ-MM2-MEH-FM-2:** The Mm2 reference point shall support a capability allowing the OSS to retrieve and manage alarms from the mobile edge platform manager.



## 5.1.1.2 Requirements related to the mobile edge applications

### 5.1.1.2.1 Configuration Management requirements

**REQ-MM2-MEA-CM-1:** The Mm2 reference point shall support a capability allowing the OSS to create managed object instances representing mobile edge application instances in the mobile edge platform manager.

**REQ-MM2-MEA-CM-2:** The Mm2 reference point shall support a capability allowing the OSS to delete managed object instances representing mobile edge application instances in the mobile edge platform manager.

**REQ-MM2-MEA-CM-3:** The Mm2 reference point shall support a capability allowing the OSS to activate and deactivate the DNS rules related to a certain mobile edge application instance.

**REQ-MM2-MEA-CM-4:** The Mm2 reference point shall support a capability allowing the OSS to activate and deactivate the traffic rules related to a certain mobile edge application instance.

**REQ-MM2-MEA-CM-5:** The Mm2 reference point shall support a capability allowing the mobile edge platform manager to notify changes of managed object instances representing mobile edge application instances to the OSS.

**REQ-MM2-MEA-CM-6:** The Mm2 reference point shall support a capability allowing the mobile edge platform manager to notify object creation and deletion events of managed object instances representing mobile edge application instances to the OSS.

NOTE: The configuration management of the application functionality as such is out of scope.

### 5.1.1.2.2 State Management requirements

**REQ-MM2-MEA-SM-1:** The Mm2 reference point shall support a capability allowing the mobile edge platform manager to expose the operational state of instantiated mobile edge applications to the OSS.

---

## 6 Information flows

### 6.1 Configuration management flows

#### 6.1.1 Creation and deletion of managed objects representing application instances

There are two ways for the creation and deletion of managed objects representing application instances:

- 1) The managed object instances representing on Mm2 application instances are created and deleted automatically by the MEPM. MEPM sends automatically object creation/deletion notifications to the OSS carrying the application instance identifier.
- 2) The managed object instances representing on Mm2 application instances are created and deleted by the OSS.

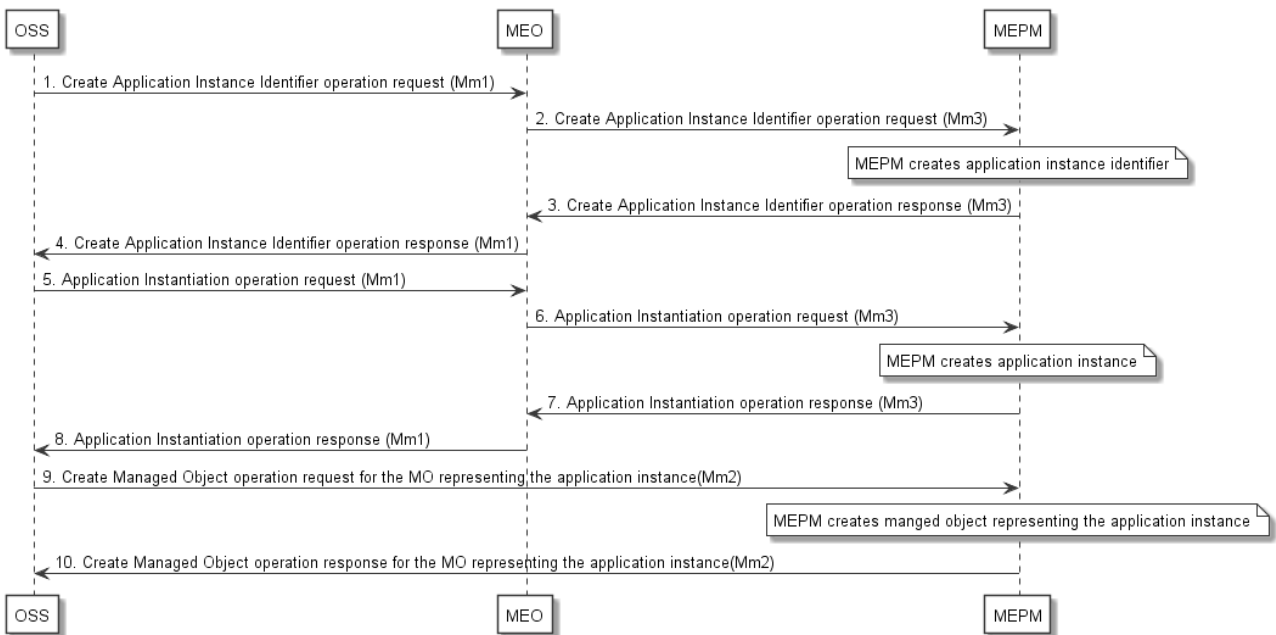


Figure 6.1.1-1: Managed object creation by the OSS flow

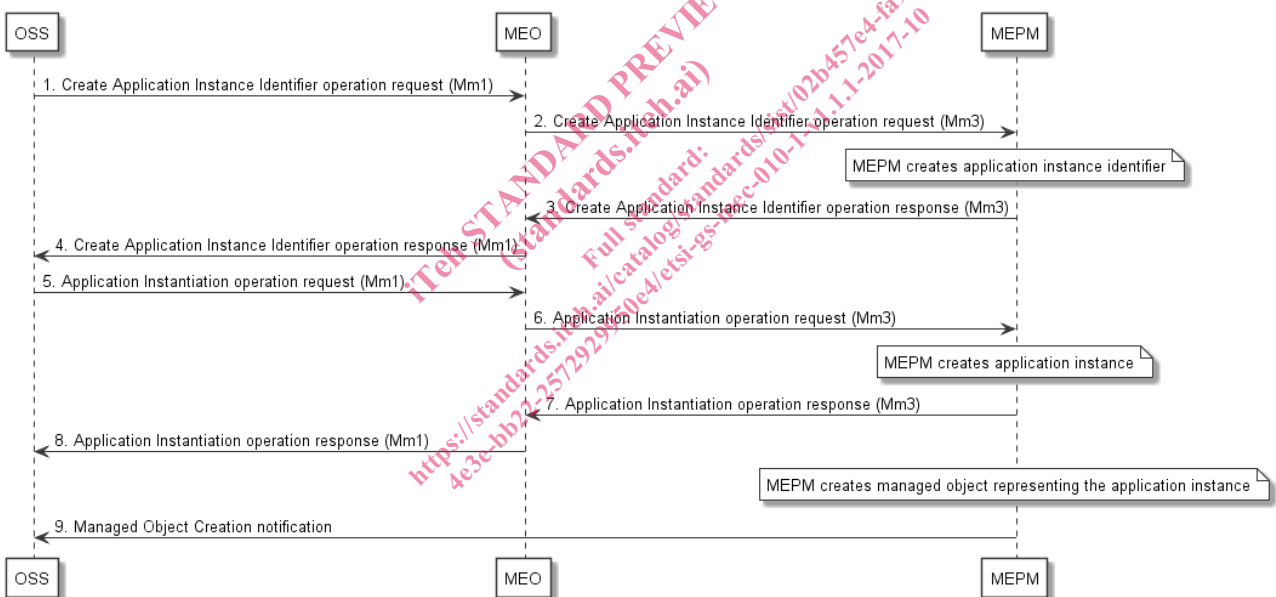


Figure 6.1.1-2: Managed object creation by the MEPM flow