

~~ISO/FDIS-22359:2024~~

~~ISO/TC-292~~

~~Secretariat: SIS~~

~~Date: 2024-01-2904-16~~

Style Definition

Formatted: English (United Kingdom)

Formatted: Right: 1.5 cm, Bottom: 1 cm, Gutter: 0 cm, Section start: New page, Header distance from edge: 1.27 cm, Footer distance from edge: 1.27 cm

Formatted

Formatted: zzCover large

Formatted: English (United Kingdom)

Formatted

Formatted: Cover Title_A1

Security and resilience — Guidelines for hardened protective shelters

Sécurité et résilience — Lignes directrices relatives aux abris durcis

iTeh Standards
(<https://standards.itih.ai>)

FDIS stage Preview

[ISO/FDIS 22359](https://standards.itih.ai/catalog/standards/iso/c8d80a41-89dc-4989-b2ae-02893f1f13fe/iso-fdis-22359)

<https://standards.itih.ai/catalog/standards/iso/c8d80a41-89dc-4989-b2ae-02893f1f13fe/iso-fdis-22359>

Edited DIS - MUST BE USED FOR FINAL DRAFT

© ISO 2023/2024

All rights reserved. Unless otherwise specified, or required in the context of its implementation, no part of this publication may be reproduced or utilized otherwise in any form or by any means, electronic or mechanical, including photocopying, or posting on the internet or an intranet, without prior written permission. Permission can be requested from either ISO at the address below or ISO's member body in the country of the requester.

ISO copyright office
CP 401 • Ch. de Blandonnet 8
CH-1214 Vernier, Geneva
Phone: +41 22 749 01 11
Email: copyright@iso.org
Website: www.iso.org

Published in Switzerland

Formatted: Font: 11 pt, Bold

Formatted: Font: 11 pt, Bold

Formatted: HeaderCentered, Space After: 0 pt, Line spacing: single

Formatted: Font: 11 pt, Bold

Formatted: Default Paragraph Font

Formatted: French (Switzerland)

Formatted: French (Switzerland)

Formatted: French (Switzerland)

Formatted: English (United Kingdom)

Formatted: English (United Kingdom)

iTech Standards (<https://standards.iteh.ai>) Document Preview

ISO/FDIS 22359

<https://standards.iteh.ai/catalog/standards/iso/c8d80a41-89dc-4989-b2ae-02893f1f13fe/iso-fdis-22359>

Formatted: FooterPageRomanNumber

Contents

Foreword v

Introduction vi

1 — Scope 1

2 — Normative references 1

3 — Terms and definitions 1

4 — Design of a shelter 3

4.1 — Design process 3

4.2 — Design criteria 5

4.2.1 — Hazards 5

4.2.2 — General parameters 6

4.2.3 — Type and purpose of a shelter 6

4.2.4 — Location 7

4.3 — Shelter sections and layout design 8

4.3.1 — General 8

4.3.2 — Entrance and exit passages 9

4.3.3 — Living section 11

4.3.4 — Service section 11

4.3.5 — Technical section 12

4.4 — Structural design 15

4.4.1 — General 15

4.4.2 — Calculation of the loads 15

4.4.3 — Bedrock and concrete shelters 16

4.5 — Heating, ventilation, air conditioning (HVAC) and other mechanical systems 16

4.5.1 — Ventilation and air conditioning 16

4.5.2 — Water supply and sewage 18

4.6 — Electrical and electronic systems 18

4.6.1 — Power generation 18

4.6.2 — External communication 18

4.6.3 — Internal communication 18

4.6.4 — Situational awareness 19

4.6.5 — Intentional electromagnetic interference IEMI (EMP and HPM) protection 19

4.6.6 — Monitoring and control 19

4.7 — Shelter protective equipment 19

4.7.1 — General 19

4.7.2 — Blast protection 19

4.7.3 — Gas tightness 20

4.7.4 — Tightness of penetrations 20

4.7.5 — Ground shock isolation 21

4.7.6 — CBRN protection 21

4.7.7 — Removal of carbon dioxide and addition of oxygen 21

4.8 — Safety and security 21

4.8.1 — Physical safety and security 21

4.8.2 — Fire safety 22

5 — Commissioning of a shelter 22

6 — Use and maintenance of a shelter 23

6.1 — Sheltering cycle 23

Formatted: Font: 11 pt, Bold

Formatted: HeaderCentered, Left, Space After: 0 pt, Line spacing: single

Formatted: Font: 11 pt, Bold

Formatted: Font: 11 pt, Bold

Formatted: Adjust space between Latin and Asian text, Adjust space between Asian text and numbers

Formatted: Font: Bold

Formatted: FooterPageRomanNumber

6.2 Normal time use 23

6.3 Activation period – preparing the shelter for crisis time use 24

6.4 Crisis time – use of the shelter in various sheltering modes 25

6.4.1 Deactivation period – preparing the shelter for normal time use 25

6.5 Modifications and alterations during the service life of a shelter 26

Annex A 27

A.1 Shut-off mode 28

A.2 Filtration mode 29

A.3 By-pass mode 29

A.4 Elevated readiness mode 30

Annex B 31

B.1 Small shelter for apartment house 32

B.2 Medium-sized shelter for sizeable buildings 34

B.3 Large shelter for a city district 36

Bibliography 38

Foreword vi

Introduction vii

1 Scope 1

2 Normative references 1

3 Terms and definitions 1

4 Design of a shelter 3

4.1 Design process 3

4.2 Design criteria 5

4.2.1 Hazards 5

4.2.2 General parameters 6

4.2.3 Type and purpose of a shelter 6

4.2.4 Location 7

4.3 Shelter sections and layout design 8

4.3.1 General 8

4.3.2 Entrance and exit passages 9

4.3.3 Living section 11

4.3.4 Service section 11

4.3.5 Technical section 12

4.4 Structural design 15

4.4.1 General 15

4.4.2 Calculation of the loads 15

4.4.3 Bedrock and concrete shelters 16

4.5 Heating, ventilation, air conditioning (HVAC) and other mechanical systems 16

4.5.1 Ventilation and air conditioning 16

4.5.2 Water supply and sewage 18

4.6 Electrical and electronic systems 18

4.6.1 Power generation 18

4.6.2 External communication 18

4.6.3 Internal communication 18

4.6.4 Situational awareness 19

4.6.5 Intentional electromagnetic interference IEMI (EMP and HPM) protection 19

4.6.6 Monitoring and control 19

Formatted: Font: 11 pt, Bold

Formatted: Font: 11 pt, Bold

Formatted: HeaderCentered, Space After: 0 pt, Line spacing: single

Formatted: Font: 11 pt, Bold

Formatted: FooterPageRomanNumber

4.7 Shelter protective equipment 19
4.7.1 General..... 19
4.7.2 Blast protection..... 19
4.7.3 Gas tightness 20
4.7.4 Tightness of penetrations..... 20
4.7.5 Ground shock isolation 21
4.7.6 CBRN protection..... 21
4.7.7 Removal of carbon dioxide and addition of oxygen 21
4.8 Safety and security 21
4.8.1 Physical safety and security 21
4.8.2 Fire safety..... 22
5 Commissioning of a shelter 22
6 Use and maintenance of a shelter..... 23
6.1 Sheltering cycle 23
6.2 Normal time use 23
6.3 Activation period – preparing the shelter for crisis time use..... 24
6.4 Crisis time – use of the shelter in various sheltering modes 25
6.5 Deactivation period – preparing the shelter for normal time use 25
6.6 Modifications and alterations during the service life of a shelter..... 26
Annex A (informative) Sheltering modes 28
A.1 Shut-off mode..... 28
A.2 Filtration mode..... 29
A.3 By-pass mode 29
A.4 Elevated readiness mode..... 30
Annex B (informative) Examples of shelters 31
B.1 Small shelter for apartment house 32
B.2 Medium-sized shelter for sizeable buildings 34
B.3 Large shelter for a city district..... 36
Bibliography 38

Formatted: Font: 11 pt, Bold

Formatted: HeaderCentered, Left, Space After: 0 pt, Line spacing: single

Formatted: Font: 11 pt, Bold

Formatted: Font: 11 pt, Bold

Foreword

ISO (the International Organization for Standardization) is a worldwide federation of national standards bodies (ISO member bodies). The work of preparing International Standards is normally carried out through ISO technical committees. Each member body interested in a subject for which a technical committee has been established has the right to be represented on that committee. International organizations, governmental and non-governmental, in liaison with ISO, also take part in the work. ISO collaborates closely with the International Electrotechnical Commission (IEC) on all matters of electrotechnical standardization.

The procedures used to develop this document and those intended for its further maintenance are described in the ISO/IEC Directives, Part 1. In particular, the different approval criteria needed for the different types of ISO document should be noted. This document was drafted in accordance with the editorial rules of the ISO/IEC Directives, Part 2 (see www.iso.org/directives).

ISO draws attention to the possibility that the implementation of this document may involve the use of (a) patent(s). ISO takes no position concerning the evidence, validity or applicability of any claimed patent rights in respect thereof. As of the date of publication of this document, ISO had not received notice of (a) patent(s) which may be required to implement this document. However, implementers are cautioned that this may not represent the latest information, which may be obtained from the patent database available at www.iso.org/patents. ISO shall not be held responsible for identifying any or all such patent rights.

Any trade name used in this document is information given for the convenience of users and does not constitute an endorsement.

For an explanation of the voluntary nature of standards, the meaning of ISO specific terms and expressions related to conformity assessment, as well as information about ISO's adherence to the World Trade Organization (WTO) principles in the Technical Barriers to Trade (TBT), see www.iso.org/iso/foreword.html.

This document was prepared by Technical Committee ISO/TC 292, *Security and resilience*.

Any feedback or questions on this document should be directed to the user's national standards body. A complete listing of these bodies can be found at www.iso.org/members.html.

Formatted: Font: 11 pt, Bold

Formatted: Font: 11 pt, Bold

Formatted: HeaderCentered, Space After: 0 pt, Line spacing: single

Formatted: Font: 11 pt, Bold

Formatted: Adjust space between Latin and Asian text, Adjust space between Asian text and numbers

Formatted: English (United Kingdom)

Formatted: Font: Not Bold

Formatted: Font: Not Italic

Formatted: English (United Kingdom)

Field Code Changed

Formatted: FooterPageRomanNumber

Introduction

0.1- General

This document provides guidelines for hardened protective shelters used for protection of people, assets, and functions supporting critical infrastructures during a disaster through isolating them from the hazardous environment and thus protecting them against the dangerous effects of the hazard.

Protection of people is based on international treaties. ~~Most states around the world are obliged to protect their- and protection of the~~ civilian population when their country is at war, but also in peacetime ~~when there are other serious threats towards civilians-is primordial~~. Article 3 of the United Nations Universal Declaration of Human Rights^[2] gives everyone the right to life, liberty, and security. Furthermore, the fourth treaty of the Geneva Convention^[1] proclaims the civilian populations right to be protected in armed conflicts.

0.2- Hazards and disasters

Hazards create harmful effects such as loss of life, injury or other health effects, property damage, social and economic disruption or environmental degradation. Hazards ~~may~~ be single, sequential or combined in their origin and effects, as hazardous events ~~may~~ occur alone, simultaneously, cascading or cumulatively

If the hazard(s) cannot be mitigated, they can result in a disaster. During a disaster, ~~the~~ citizens typically need some type of societal protection against the effects of the hazard. Most societies have planned and implemented ~~efforts~~actions to protect their citizens against hazards and their effects. ~~Depending on the country and the various actors, these efforts~~These actions are ~~called~~sometimes referred to diversely as civil protection, civil defence, crisis management, emergency management, emergency preparedness, contingency planning, civil contingency and civil aid.

The preventive measures and protective efforts depend on ~~the~~ threat assessments studying the risks created by various hazards or combinations of them. The threat assessments usually address all four stages of the disaster management cycle (mitigation, preparation, response and recovery).

When a hazard occurs, it ~~may~~ cause effects that can affect the citizens. The citizens can be directly injured or harmed by ~~the~~ failure of critical infrastructure and ~~the~~ denial of vitally important functions of the society. This document focuses only on ~~these~~ hazards and effects that can be mitigated through hardened protective shelters. Some other common and well-known methods to protect citizens are mass evacuations, quarantines and redundant systems.

0.3- Hardened ~~Protective Shelter~~protective shelter

A hardened protective shelter is a purpose-built structure, which is blast resistant (designed to withstand the effects of a blast with a predefined force) and gastight (so completely closed that no gases can get in or out), for protection of shelter occupants against the effects of disasters by isolating them from the hazardous environment.

The shelter is hardened against the mechanical effects of disasters by means of a heavily reinforced concrete or bedrock shield. This distinguishes it from rapidly erected temporary shelters such as lightweight canvas weather shelters, other tarp tent shelters as well as metal and container shelters.

The shelter ~~sustains-can sustain the~~ life of the occupants ~~-even~~ for an extended period of time should the anticipated threat so require, by maintaining a sufficient internal overpressure and using purified filtered air to prevent entry of all possible toxic substances ~~that~~ the ambient air ~~may~~ contain.

Formatted: Font: 11 pt, Bold

Formatted: HeaderCentered, Left, Space After: 0 pt, Line spacing: single

Formatted: Font: 11 pt, Bold

Formatted: Font: 11 pt, Bold

Formatted: Adjust space between Latin and Asian text, Adjust space between Asian text and numbers

Formatted: Font: Not Bold

Formatted: Font: Not Bold

Formatted: Font: Not Bold

Formatted: FooterPageRomanNumber

0.4_ Use of shelters

The civil protection shelter programs are managed by civilian authorities. The primary purpose of hardened protective shelters is to protect citizens against the effects of weapons during wars or warlike situations, but they can also be used for safeguarding them in case of natural hazards or industrial accidents threatening citizens' livescivilian life.

Military shelters are usually hardened against weapon effects, such as blast, chemical, biological, radiological and nuclear (CBRN) warfare, and in many cases also against the effects of an electromagnetic pulse (EMP). They are used as command-and-control centres, for protection of troops and as fortified hangars for aircraft and other military assets.

There are several industry branches with a potential risk of accidents involving of flammable, explosive, poisonous or radiating materials. The accident is often caused by an explosion, but also natural effects such as flooding, or earthquake can trigger an incident. The industrial market segment comprises, among others, chemical industries, nuclear power plants, hospitals, industrial command and control centres and data storage facilities.

Formatted: Font: 11 pt, Bold

Formatted: Font: 11 pt, Bold

Formatted: HeaderCentered, Space After: 0 pt, Line spacing: single

Formatted: Font: 11 pt, Bold

Formatted: Font: Not Bold

iTeh Standards (<https://standards.iteh.ai>) Document Preview

ISO/FDIS 22359

<https://standards.iteh.ai/catalog/standards/iso/c8d80a41-89dc-4989-b2ae-02893f1f13fe/iso-fdis-22359>

Formatted: FooterPageRomanNumber

Security and resilience — Guidelines for hardened protective shelters

1 Scope

This document provides guidelines for the design, use and maintenance of hardened protective shelters (further hereafter referred to as “shelters”). It offers ~~specifies~~ guidance ~~to on~~ the layout, structures, equipment and actions related to a shelter.

This document is intended for organizations or individuals ~~being~~ responsible for or involved in decision-making, planning, implementation, administration, use or upkeep of shelters, such as local, regional and national governments, civil protection agencies, first responders and businesses such as designers, constructors and equipment suppliers.

This document does not cover the minimum requirements or exact specifications for the properties of or actions related to a shelter; nor does it cover rapidly erected temporary shelters, such as lightweight canvas weather shelters, other tarp tent shelters, or metal and container shelters. Military shelters are ~~subject to additional requirements which are~~ outside the scope of this ~~standard document~~.

2 Normative references

The following documents are referred to in the text in such a way that some or all of their content constitutes requirements of this document. For dated references, only the edition cited applies. For undated references, the latest edition of the referenced document (including any amendments) applies.

ISO 22300, *Security and resilience — Vocabulary*

3 Terms and definitions

For the purposes of this document, the terms and definitions given in ISO 22300 and the following apply.

ISO and IEC maintain terminology databases for use in standardization at the following addresses:

— ISO Online browsing platform: available at <https://www.iso.org/obp>

— IEC Electropedia: available at <https://www.electropedia.org/>

3.1

blast resistant

withstanding the effects of a blast with a predefined force

3.2

gastight

preventing gas from entering or escaping

Formatted: Header

Formatted: Font color: Auto

Formatted: Font color: Auto

Formatted: Main Title 1, Space Before: 0 pt, After: 0 pt

Formatted: Body Text

Formatted: Adjust space between Latin and Asian text, Adjust space between Asian text and numbers

Formatted: Body Text

Formatted: Default Paragraph Font

Formatted: Default Paragraph Font

Formatted: Default Paragraph Font, Font: Italic

Formatted: Adjust space between Latin and Asian text, Adjust space between Asian text and numbers

Formatted: Body Text

Formatted: Default Paragraph Font

Formatted: Default Paragraph Font

Formatted: Default Paragraph Font, English (United Kingdom)

Formatted: Footer

Formatted: Font: 11 pt, Bold

Formatted: Font: 11 pt, Bold

Formatted: HeaderCentered, Space After: 0 pt, Line spacing: single

Formatted: Font: 11 pt, Bold

3.3

hardened protective shelter

blast resistant (3.1)(3.1) and *gastight* (3.2)(3.2) facility with a capability to maintain internal overpressure with air purified from toxic agents

iTeh Standards (<https://standards.iteh.ai>) Document Preview

ISO/FDIS 22359

<https://standards.iteh.ai/catalog/standards/iso/c8d80a41-89dc-4989-b2ae-02893f1f13fe/iso-fdis-22359>

Formatted: FooterPageRomanNumber

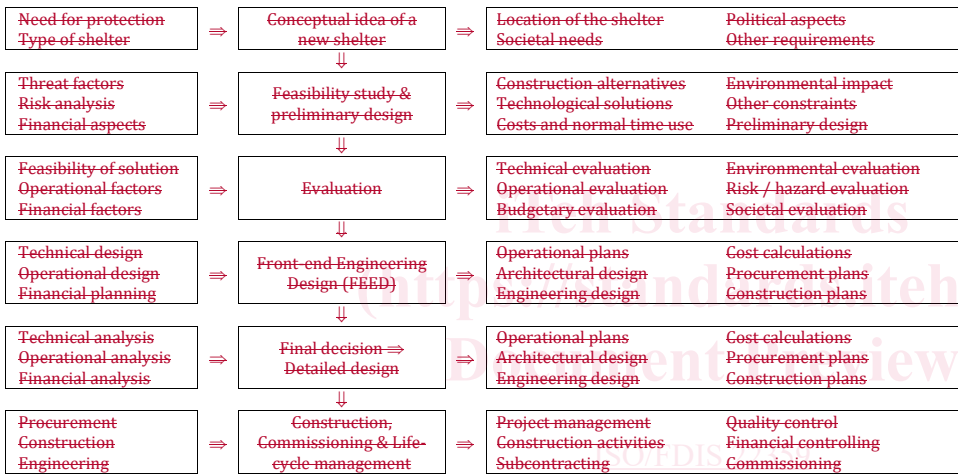
3.4 normal time

period during which there is no such crisis that would cause the shelter to be activated as during crisis time use

4 Design of a shelter

4.1 Design process

The design of a shelter should be based on operational requirements, depending on the purpose of the shelter and the applicable threat scenario(s). The design process of a shelter is practically similar to that of any capital project. The entire design process from the first conceptual idea to the beginning of construction is presented as a flowchart in **Figure 1-Figure 1**.



Formatted: Font: 11 pt, Bold
Formatted: Font: 11 pt, Bold
Formatted: HeaderCentered, Left, Space After: 0 pt, Line spacing: single
Formatted: Font: 11 pt, Bold

Formatted: Body Text, Space After: 0 pt

<https://standards.iteh.ai/catalog/standards/iso/c8d80a41-89dc-4989-b2ac-02893f1f13fe/iso-fdis-22359>

Formatted: FooterPageRomanNumber

ISO/FDIS-22359:2024(en)

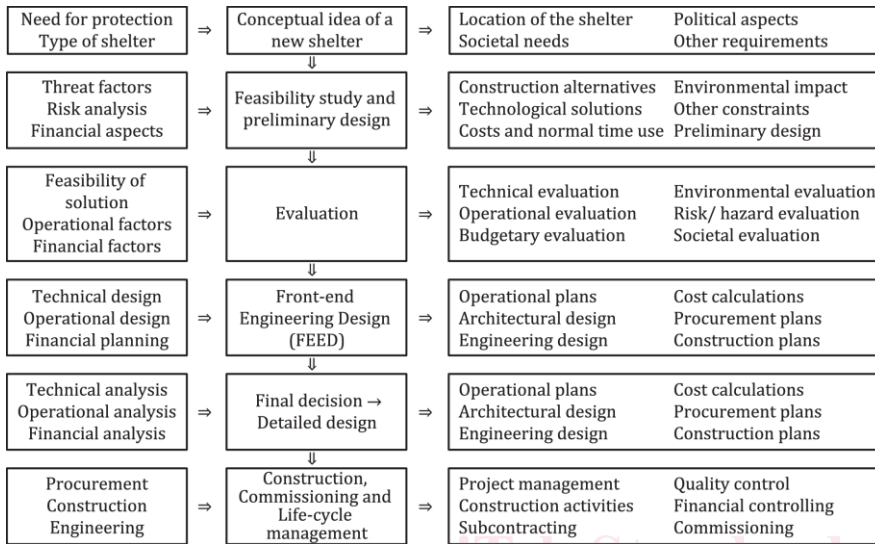
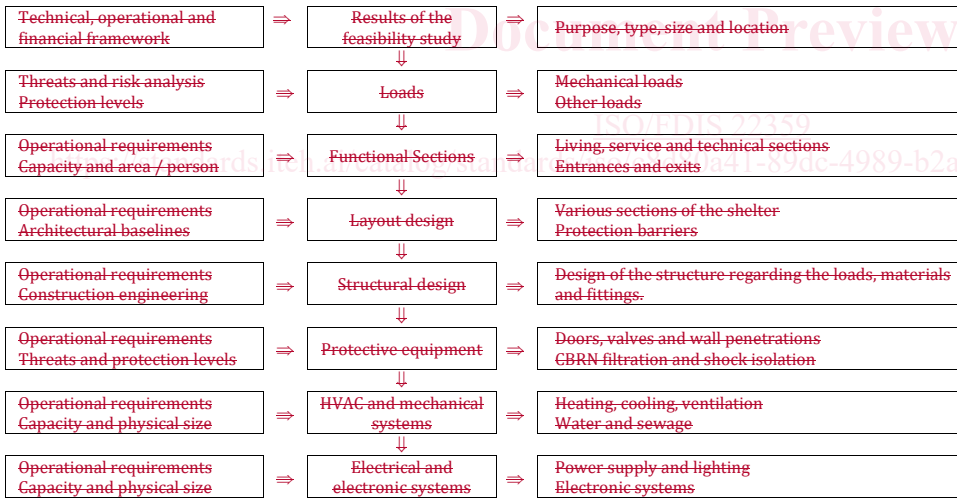


Figure 1—The design 1 — Design process of a shelter

The operational, architectural and engineering design is described in detail in [Figure 2](#).



Formatted: Font: 11 pt, Bold

Formatted: Font: 11 pt, Bold

Formatted: HeaderCentered, Space After: 0 pt, Line spacing: single

Formatted: Font: 11 pt, Bold

Formatted: Figure title, Space Before: 0 pt

Formatted: Body Text, Space After: 0 pt

Formatted: FooterPageRomanNumber