

---

---

**Optics and optical instruments —  
Focimeters —**

**Part 1:  
General purpose instruments**

*Optique et instruments d'optique — Frontofocomètres —*

*Partie 1: Instruments pour cas généraux*

**iTeh STANDARD PREVIEW  
(standards.iteh.ai)**

ISO 8598-1:2014

<https://standards.iteh.ai/catalog/standards/sist/c9f90cfb-636d-4761-924d-6f354b2debbd/iso-8598-1-2014>



**iTeh STANDARD PREVIEW**  
**(standards.iteh.ai)**

ISO 8598-1:2014

<https://standards.iteh.ai/catalog/standards/sist/c9f90cfb-636d-4761-924d-6f354b2debbd/iso-8598-1-2014>



**COPYRIGHT PROTECTED DOCUMENT**

© ISO 2014

All rights reserved. Unless otherwise specified, no part of this publication may be reproduced or utilized otherwise in any form or by any means, electronic or mechanical, including photocopying, or posting on the internet or an intranet, without prior written permission. Permission can be requested from either ISO at the address below or ISO's member body in the country of the requester.

ISO copyright office  
Case postale 56 • CH-1211 Geneva 20  
Tel. + 41 22 749 01 11  
Fax + 41 22 749 09 47  
E-mail [copyright@iso.org](mailto:copyright@iso.org)  
Web [www.iso.org](http://www.iso.org)

Published in Switzerland

# Contents

	Page
Foreword.....	iv
Introduction.....	v
<b>1 Scope.....</b>	<b>1</b>
<b>2 Normative references.....</b>	<b>1</b>
<b>3 Terms and definitions.....</b>	<b>1</b>
<b>4 Technical requirements for general purpose focimeters.....</b>	<b>3</b>
<b>5 Metrological requirements.....</b>	<b>5</b>
5.1 General.....	5
5.2 Reference wavelength.....	5
5.3 Performance requirement.....	5
<b>6 Test procedures.....</b>	<b>8</b>
6.1 General.....	8
6.2 Checking the indication errors.....	8
6.3 Checking the axis marker for the optical centre of lens.....	8
6.4 Checking the alignment of the axis marker.....	9
6.5 Checking the adjusting rail.....	9
6.6 Checking the non-symmetric error for automated focimeters.....	9
6.7 Checking the repeatability of vertex power measurement for automated focimeters.....	10
6.8 Checking for the centration error.....	10
6.9 Checking the capability of focimeters to measure tinted lenses.....	10
6.10 Checking the astigmatic axis repeatability for low-powered cylinder lens.....	10
6.11 Special procedures for eyepiece focimeters.....	11
6.12 Criterion for image focusing in manual focusing focimeters.....	11
<b>7 Marking.....</b>	<b>11</b>
7.1 Reference to ISO 8598-1.....	11
7.2 General information to be supplied by the manufacturer.....	11
7.3 Additional information to be supplied by the manufacturer.....	12
<b>Annex A (informative) Use of correction values when measuring spectacle lenses.....</b>	<b>13</b>
<b>Annex B (informative) Example for evaluation of uncertainty of measurement for automated focimeters for general use.....</b>	<b>18</b>
<b>Annex C (normative) Specifications of special reference lenses.....</b>	<b>24</b>
<b>Annex D (informative) Information for users on the performance of general purpose focimeters covered by this part of ISO 8598.....</b>	<b>26</b>
<b>Bibliography.....</b>	<b>27</b>

## Foreword

ISO (the International Organization for Standardization) is a worldwide federation of national standards bodies (ISO member bodies). The work of preparing International Standards is normally carried out through ISO technical committees. Each member body interested in a subject for which a technical committee has been established has the right to be represented on that committee. International organizations, governmental and non-governmental, in liaison with ISO, also take part in the work. ISO collaborates closely with the International Electrotechnical Commission (IEC) on all matters of electrotechnical standardization.

The procedures used to develop this document and those intended for its further maintenance are described in the ISO/IEC Directives, Part 1. In particular the different approval criteria needed for the different types of ISO documents should be noted. This document was drafted in accordance with the editorial rules of the ISO/IEC Directives, Part 2 (see [www.iso.org/directives](http://www.iso.org/directives)).

Attention is drawn to the possibility that some of the elements of this document may be the subject of patent rights. ISO shall not be held responsible for identifying any or all such patent rights. Details of any patent rights identified during the development of the document will be in the Introduction and/or on the ISO list of patent declarations received (see [www.iso.org/patents](http://www.iso.org/patents)).

Any trade name used in this document is information given for the convenience of users and does not constitute an endorsement.

For an explanation on the meaning of ISO specific terms and expressions related to conformity assessment, as well as information about ISO's adherence to the WTO principles in the Technical Barriers to Trade (TBT) see the following URL: Foreword - Supplementary information

The committee responsible for this document is ISO/TC 172, *Optics and photonics*, Subcommittee SC 7, *Ophthalmic optics and instruments*.

This first edition of ISO 8598-1 cancels and replaces ISO 8598:1996, of which it constitutes a technical revision. It also incorporates the Technical Corrigendum ISO 8598:1996/Cor.1:1998.

ISO 8598 consists of the following parts, under the general title *Optics and optical instruments — Focimeters*:

— *Part 1: General purpose instruments*

## Introduction

General purpose focimeters are intended for measurement of contact lenses, single-vision, multifocal and progressive-power or degressive-power spectacle lenses, both uncut and mounted in spectacle frames, and for the orientation and marking of spectacle lenses.

**iTeh STANDARD PREVIEW**  
**(standards.iteh.ai)**

ISO 8598-1:2014

<https://standards.iteh.ai/catalog/standards/sist/c9f90cfb-636d-4761-924d-6f354b2debbd/iso-8598-1-2014>

**iTeh STANDARD PREVIEW**  
**(standards.iteh.ai)**

ISO 8598-1:2014

<https://standards.iteh.ai/catalog/standards/sist/c9f90cfb-636d-4761-924d-6f354b2debbd/iso-8598-1-2014>

# Optics and optical instruments — Focimeters —

## Part 1: General purpose instruments

### 1 Scope

This part of ISO 8598 specifies requirements and test methods for general purpose focimeters designed for the measurement of vertex powers, cylinder axis, prismatic power and prism base setting within a restricted area at a specified location of a lens. This excludes instruments that can only measure the whole lens at once.

It is applicable to instruments typically intended for use by the ophthalmic community, with the capability to demonstrate conformity of lens products with the International Standards existing for these lenses.

### 2 Normative references

The following referenced documents are indispensable for the application of this document. For dated references, only the edition cited applies. For undated references, the latest edition of the referenced document (including any amendments) applies.

ISO 7944, *Optics and optical instruments — Reference wavelengths*  
ISO 8598-1:2014

ISO 8429, *Optics and optical instruments — Ophthalmology — Graduated dial scale*  
6B54b2debbd/iso-8598-1-2014

ISO 9342-1, *Optics and optical instruments — Test lenses for calibration of focimeters — Part 1: Test lenses for focimeters used for measuring spectacle lenses*

### 3 Terms and definitions

For the purposes of this document, the following terms and definitions apply.

#### 3.1 adjusting rail

movable rail or bar used as the reference axis for spectacles during measurement and which is aligned perpendicularly to the optical axis of the focimeter and parallel to the axis direction  $0^\circ$  to  $180^\circ$

Note 1 to entry: This is also called the lens table or frame rest.

#### 3.2 capability

ability of a system or process to achieve the required performance

#### 3.3 general purpose focimeter

instrument that is used to measure vertex powers, cylinder axis and prismatic effects of spectacle and contact lenses, to orientate and mark uncut lenses, and to verify the correct mounting of lenses in spectacle frames

### 3.3.1

#### **manual focusing focimeter**

instrument that allows the operator to view images formed by rays of light passing through a lens and, by manually focusing and adjusting, to measure the vertex power and identify the principal meridians

Note 1 to entry: For lenses with cylindrical power, the cylinder axis is found using the method provided to locate the principal meridians of the lens in the area defined by the focimeter aperture. Prismatic power is measured separately for this type of focimeter.

Note 2 to entry: There are sub-classes of manual focusing focimeter. One type has an eyepiece whereas the other has a projection screen. With the eyepiece type, the measurement target is focused and viewed through an eyepiece.

### 3.3.2

#### **automated focimeter**

instrument that measures the vertex power of a lens, in the area defined by the focimeter aperture, in a single measurement without operator adjustment

### 3.3.3

#### **continuously indicating focimeter**

focimeter with a continuous scale

Note 1 to entry: For the purposes of this part of ISO 8598, this includes both automated instruments when set to 0,06 D or 0,01 D steps and conventional manual focusing instruments.

### 3.3.4

#### **digitally rounding focimeter**

focimeter which displays measured values rounded to the nearest 0,25 D or 0,12(5) D incremental value

### 3.4

#### **centration error of the instrument**

residual prismatic error of the instrument with no lens in place

### 3.5

#### **indication**

(of a focimeter) quantitative value provided as the output of the focimeter

### 3.6

#### **indication error**

difference between the value indicated by the focimeter and the true value of the reference lens

Note 1 to entry: Here the true value of the reference lens, the back vertex power, is calculated using the four known basic lens parameters: radii of curvature of the front and back surface ( $r_1$  and  $r_2$ ), the centre thickness ( $t$ ), and the refractive index ( $n$ ) of the reference lens material, using the formulas listed in ISO 9342-1.

Note 2 to entry: When using a measuring instrument, the influence of the uncertainty and indication error of the device should be considered.

### 3.7

#### **lens support**

mechanical interface of the instrument against which the spectacle lens or the contact lens is placed for measurement

Note 1 to entry: The focimeter measures the vertex power related to the surface placed against the lens support.

### 3.8

#### **near portion power**

vertex power measured at the near design reference point, as specified by the manufacturer, of a multifocal, progressive-power or degressive-power lens



**3.9****non-symmetric error for cylindrical power and cylinder axis**

residual error in the indicated cylindrical power and/or the indicated cylinder axis of a spherocylindrical lens for an automated focimeter after calibration

**3.10****non-symmetric prism error of a focimeter**

difference in the prismatic power readings when a plano-prism is measured first with its base setting in one direction and then in the opposite direction, for example, base settings of 180° and 360°, or 90° and 270°

**3.11.1****back vertex power**

reciprocal of the paraxial value of the back vertex focal length measured in metres

**3.11.2****front vertex power**

reciprocal of the paraxial value of the front vertex focal length measured in metres

Note 1 to entry: Conventionally, the back vertex power, in dioptres, is specified as the “power” of a spectacle lens or a contact lens, although the front vertex power is required for certain purposes, for example in the measurement of some multifocal lenses or progressive-power lenses.

Note 2 to entry: The unit for expressing vertex power is the reciprocal metre ( $\text{m}^{-1}$ ). The name for this unit is the “dioptre”, for which the symbol is “D”.

## iTeh STANDARD PREVIEW

### 4 Technical requirements for general purpose focimeters (standards.iteh.ai)

**4.1** The measuring range shall include vertex powers with a range from at least  $-20$  D to  $+20$  D and prismatic powers from  $0 \Delta$  to at least  $5 \Delta$ . [ISO 8598-1:2014](https://standards.iteh.ai/catalog/standards/sist/c9f90cfb-636d-4761-924d-fb754b214141/iso-8598-1-2014)

The instrument shall be capable of measuring the axis direction (see ISO 8429) of cylindrical lenses between  $0^\circ$  and  $180^\circ$ . For prisms, it shall be possible to determine the direction of the base setting between  $0^\circ$  and  $360^\circ$ .

**4.2** For manual focusing focimeters with non-digital display, the dioptric power scale shall have an interval not greater than  $0,25$  D and shall be clear enough for interpolations to be made to the nearest  $0,12$  D or less.

For axis directions (see ISO 8429) the scale interval shall not exceed  $5^\circ$  and shall be clear enough for interpolations to be made to the nearest degree.

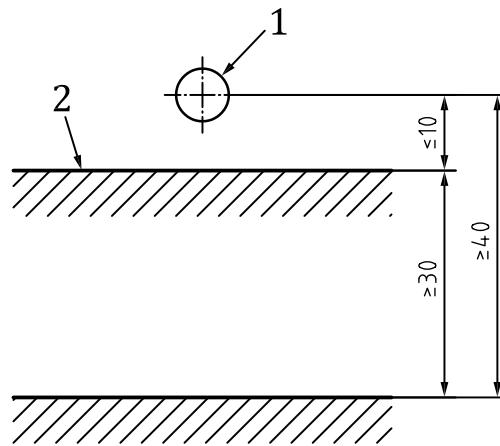
For prismatic power readings, the scale interval shall not exceed  $1 \Delta$  and shall be clear enough for interpolations to be made to the nearest  $0,50 \Delta$ .

**4.3** For focimeters with digital display in the range from  $+20$  D to  $-20$  D, the minimum step of the display shall be equal to or lower than  $0,06$  D. The display shall show at least two decimal digits.

For axis directions, the increment of the digital display shall be  $1^\circ$ .

For prismatic power readings, the minimum step of the digital display shall be equal to or lower than  $0,06 \Delta$ .

**4.4** The instrument designed to measure spectacle lenses shall be able to measure lenses with a diameter of at least  $80$  mm and a thickness of at least  $20$  mm. Translational movements of the lenses on the lens support of not less than  $30$  mm in a direction perpendicular to the optical axis and to the adjusting rail shall be possible, starting from no more than  $10$  mm below, in front of, or behind, the optical axis of the instrument, as applicable. The adjusting rail shall also be capable of movement of not less than  $30$  mm in a direction perpendicular to its length and the optical axis of the instrument. See [Figure 1](#).



**Key**

- 1 lens support
- 2 adjusting rail

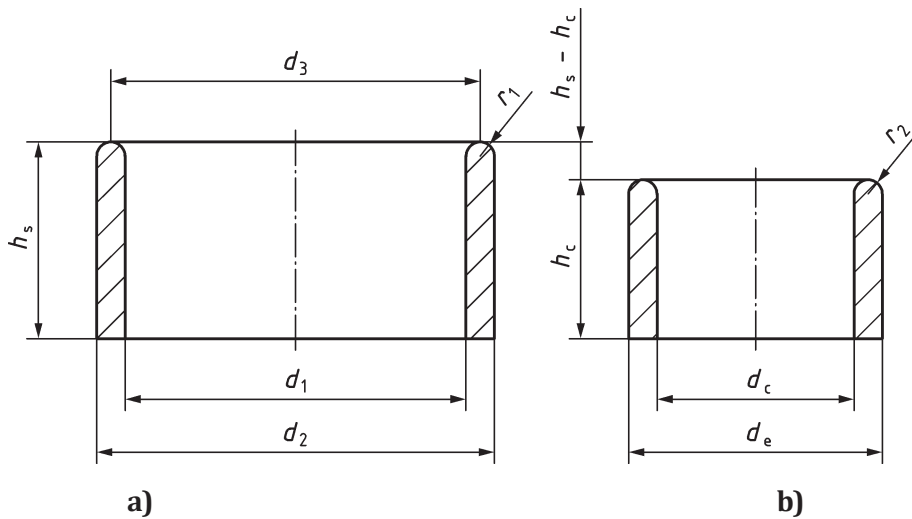
**Figure 1 — Minimum required movement of the adjusting rail**

4.5 The lens support should be designed so that it does not cause any damage to the lens under test when used in the manner recommended by the manufacturer.

It shall be designed and manufactured so that it will support a lens placed against it, holding the surface that is in contact with it perpendicular to the optical axis of the focimeter.

The lens support shall not adversely affect the accuracy of measurement by introducing sagittal error.

Examples of suitable lens supports are shown in Figure 2.



**Key**

$d_1, d_c$	internal diameter of support
$d_2, d_e$	external diameter of support
$d_3$	$= (d_1 + d_2)/2$
$h_s, h_c$	height of support
$r_1$	$= (d_2 - d_1)/4$
$r_2$	$= (d_e - d_c)/4$

**Figure 2 — Examples of lens supports for spectacle lenses (a) and contact lenses (b)**

For spectacle lenses (a),  $d_1$  should be in the range 5 mm to 8 mm while for contact lenses (b),  $d_c$  should be  $4,5 \text{ mm} \pm 0,5 \text{ mm}$ . Because of the increased sagittal depth of steeply-curved contact lenses, the contact lens support is usually smaller in diameter and slightly shorter. The height difference ( $h_s - h_c$ ) should be  $0,55 \text{ mm} \pm 0,02 \text{ mm}$ .

NOTE The dimensions of the contact lens support are as specified in ISO 18369-3.

The internal diameter ( $d_1, d_c$ ) of the lens support for focimeters used for spectacle lens measurement or for contact lens measurement shall be stated by the manufacturer.

**4.6** The pin mark printed by the axis marker shall be small enough to enable the distance between a first and a second mark to be distinguished.

NOTE A diameter of 0,7 mm is recommended.

**4.7** The instrument shall be designed so that it gives stable measured values in a normal environment (i.e. a temperature of  $23 \text{ }^\circ\text{C} \pm 5 \text{ }^\circ\text{C}$ , and a relative humidity of less than 85 %).

<https://standards.iteh.ai/catalog/standards/sist/c9f90cfb-636d-4761-924d-6b54b2debbd/iso-8598-1-2014>

## 5 Metrological requirements

### 5.1 General

When tested with the reference lenses specified in ISO 9342-1, both manual focusing and automated focimeters shall give indication readings for vertex power and prismatic power over their entire claimed measuring range, and the indication error for the respective true value shall not exceed the limits given in [Tables 1](#) and [2](#).

### 5.2 Reference wavelength

The instrument shall be manufactured to indicate dioptric powers with reference to the green mercury line  $\lambda_e = 546,07 \text{ nm}$  or the yellow helium line  $\lambda_d = 587,56 \text{ nm}$ , as given in ISO 7944, and the manufacturer shall indicate explicitly which wavelength has been selected.

NOTE If the light source used in the focimeter is not centred on the green mercury line  $\lambda_e = 546,07 \text{ nm}$  or the yellow helium line  $\lambda_d = 587,56 \text{ nm}$ , the user should be able either to set the instrument, or to apply corrections to the indicated values, for lenses made from materials other than the one that was used to calibrate the instrument.

### 5.3 Performance requirement

#### 5.3.1 Indication error

When tested in accordance with [6.2.1](#), the instrument, when fitted with the spectacle lens support, shall not exceed the permissible indication errors given in [Tables 1](#) and [2](#) when used with the spectacle form reference lenses specified in ISO 9342-1.

The maximum permissible indication errors given in Tables 1 and 2 correspond to the use of the reference lenses specified in ISO 9342-1 with the respective true values.

**Table 1 — Maximum permissible indication error on measured vertex power for general purpose instruments**

Values in dioptres (D)

Measuring range of vertex power		Maximum permissible indication error		
		Instruments with continuous scale	Digitally rounding instruments when set to increments of	
			0,25	0,12(5) <sup>a</sup>
< 0 ≥ -5	> 0 ≤ +5	±0,06	0,0	0,0
< -5 ≥ -10	> +5 ≤ +10	±0,09	0,0	±0,12(5)
< -10 ≥ -15	> +10 ≤ +15	±0,12	0,0	±0,12(5)
< -15 ≥ -20	> +15 ≤ +20	±0,18	±0,25	±0,12(5)
< -20	> +20	±0,25	±0,25	±0,25

NOTE 1 Calibrating to tighter tolerances (e.g. 10 % of the product tolerance) will improve instrument equivalence and reduce possible differences between two instruments.

NOTE 2 The user should be aware that when a focimeter is set to read in steps of 0,01 D, the readings may not be true to this level of precision.

<sup>a</sup> The meaning of 0,12(5) is that the instruments has been set to 1/8th dioptre steps, displayed as 0,12 D.

**STANDARD PREVIEW**  
(www.itih.ai)

**Table 2 — Maximum permissible indication errors on measured prismatic power for general purpose instruments**

Values in prism dioptres (Δ)

Measuring range of prismatic power		Maximum permissible indication error		
		Instruments with continuous scale	Digitally rounding instruments when set to increments of	
			0,25	0,12(5) <sup>a</sup>
> 0 ≤ 5	0,25	0	0,12(5)	
> 5 ≤ 10	0,25	0,25	0,25	
> 10 ≤ 15	0,50	0,50	0,50	
> 15 ≤ 20	0,75	0,75	0,75	
> 20	1,00	1,00	1,00	

NOTE Calibrating to tighter tolerances (e. g. to 10 % of the product tolerance) will improve instrument equivalence and reduce possible differences between two instruments.

<sup>a</sup> The meaning of 0,12(5) is that the instruments has been set to 1/8th dioptre steps, displayed as 0,12 D.

For automated focimeters, when any of the spherical reference lenses is measured after correct centration, it shall indicate less than 0,06 D of astigmatic power.

**5.3.2 Axis marker for the optical centre of lens**

When tested in accordance with 6.3, the position of the axis marker for the optical centre of the lens shall not deviate from the optical axis of the focimeter by more than 0,4 mm.

**5.3.3 Axis marker alignment**

When tested in accordance with 6.4, any misalignment of the orientation of the axis marker shall not exceed the tolerance of ±1° from the 0° to 180° direction of the dial scale for manual focusing instruments or at the 0° (or 180°) value of the indicated axis for automated focimeters.