

---

---

**Rubber, raw — Determination of volatile-matter content —**

Part 2:

**Thermogravimetric methods using an automatic analyser with an infrared drying unit**

iTeh STANDARD PREVIEW  
(standards.iteh.ai)

*Caoutchouc brut — Détermination des matières volatiles —*

*Partie 2: Méthodes thermogravimétriques utilisant un analyseur automatique avec une unité de séchage infrarouge*

ISO 248-2:2012

<https://standards.iteh.ai/catalog/standards/sist/263ff8eb-e52e-417b-92a7-b958bce9bbce/iso-248-2-2012>



## iTeh STANDARD PREVIEW (standards.iteh.ai)

ISO 248-2:2012

<https://standards.iteh.ai/catalog/standards/sist/263ff8eb-e52e-417b-92a7-b958bce9bbce/iso-248-2-2012>



### **COPYRIGHT PROTECTED DOCUMENT**

© ISO 2012

All rights reserved. Unless otherwise specified, no part of this publication may be reproduced or utilized in any form or by any means, electronic or mechanical, including photocopying and microfilm, without permission in writing from either ISO at the address below or ISO's member body in the country of the requester.

ISO copyright office  
Case postale 56 • CH-1211 Geneva 20  
Tel. + 41 22 749 01 11  
Fax + 41 22 749 09 47  
E-mail [copyright@iso.org](mailto:copyright@iso.org)  
Web [www.iso.org](http://www.iso.org)

Published in Switzerland

<b>Contents</b>	<b>Page</b>
Foreword .....	iv
<b>1 Scope</b> .....	<b>1</b>
<b>2 Normative references</b> .....	<b>1</b>
<b>3 Principle</b> .....	<b>1</b>
<b>4 Reagents</b> .....	<b>2</b>
<b>5 Apparatus</b> .....	<b>2</b>
<b>5.1 Automatic analyser</b> .....	<b>2</b>
<b>6 Sampling and preparation of test portion</b> .....	<b>2</b>
<b>7 Procedure</b> .....	<b>2</b>
<b>7.1 General</b> .....	<b>2</b>
<b>7.2 Determination of end points for method A and method B</b> .....	<b>3</b>
<b>7.3 Method A (pre-defined drying time method)</b> .....	<b>4</b>
<b>7.4 Method B (in which drying ends when the mass loss rate has decreased to a pre-defined level)</b>	<b>5</b>
<b>7.5 Calculation of volatile-matter content</b> .....	<b>5</b>
<b>8 Precision</b> .....	<b>5</b>
<b>9 Test report</b> .....	<b>5</b>
<b>Annex A (informative) Examples of test conditions</b> .....	<b>7</b>
<b>Annex B (informative) Precision</b> .....	<b>8</b>
<b>Bibliography</b> .....	<b>10</b>

<https://standards.iteh.ai/catalog/standards/sist/263ff8eb-e52e-417b-92a7-b958bce9bbce/iso-248-2-2012>  
 ISO 248-2:2012  
 (standards.iteh.ai)

## Foreword

ISO (the International Organization for Standardization) is a worldwide federation of national standards bodies (ISO member bodies). The work of preparing International Standards is normally carried out through ISO technical committees. Each member body interested in a subject for which a technical committee has been established has the right to be represented on that committee. International organizations, governmental and non-governmental, in liaison with ISO, also take part in the work. ISO collaborates closely with the International Electrotechnical Commission (IEC) on all matters of electrotechnical standardization.

International Standards are drafted in accordance with the rules given in the ISO/IEC Directives, Part 2.

The main task of technical committees is to prepare International Standards. Draft International Standards adopted by the technical committees are circulated to the member bodies for voting. Publication as an International Standard requires approval by at least 75 % of the member bodies casting a vote.

Attention is drawn to the possibility that some of the elements of this document may be the subject of patent rights. ISO shall not be held responsible for identifying any or all such patent rights.

ISO 248-2 was prepared by Technical Committee ISO/TC 45, *Rubber and rubber products*, Subcommittee SC 2, *Testing and analysis*.

ISO 248 consists of the following parts, under the general title *Rubber, raw — Determination of volatile-matter content*:

- *Part 1: Hot-mill method and oven method*
- *Part 2: Thermogravimetric methods using an automatic analyser with an infrared drying unit*

**iTeh STANDARD PREVIEW**  
**(standards.iteh.ai)**

<https://standards.iteh.ai/catalog/standards/sist/263ff8eb-e52e-417b-92a7-b958bce9bbce/iso-248-2-2012>

# Rubber, raw — Determination of volatile-matter content —

## Part 2:

## Thermogravimetric methods using an automatic analyser with an infrared drying unit

**WARNING** — Persons using this part of ISO 248 should be familiar with normal laboratory practice. This part of ISO 248 does not purport to address all of the safety problems, if any, associated with its use. It is the responsibility of the user to establish appropriate safety and health practices and to ensure compliance with any national regulatory conditions.

**CAUTION** — Certain procedures specified in this part of ISO 248 could involve the use or generation of substances, or the generation of waste, that could constitute a local environmental hazard. Reference should be made to appropriate documentation on safe handling and disposal after use.

### 1 Scope

**1.1** This part of ISO 248 specifies two thermogravimetric methods for the determination of moisture and other volatile-matter content in raw rubbers by using an automatic analyser with an infrared drying unit.

**1.2** These methods are applicable to the determination of volatile-matter content in synthetic rubbers (SBR, NBR, BR, IR, CR, IIR, halogenated IIR and EPDM) listed in ISO 1629 and to various forms of raw rubber, such as bale, block, chip, pellet, crumb, powder and sheet. These methods might also be applicable to other raw rubbers, but in such cases it is necessary to prove that the change in mass is due solely to loss of original volatile matter and not to rubber degradation.

**1.3** The methods are not applicable to raw rubbers which need homogenizing as specified in ISO 1795.

**1.4** The hot-mill method and the oven method specified in ISO 248-1 and the methods specified in this part of ISO 248 might not give identical results. In cases of dispute, therefore, the oven method, procedure A, specified in ISO 248-1:2011 shall be the referee method.

**NOTE** These methods can be useful for routine determinations, e.g. quality control, when the measurement conditions for the automatic analyser are fixed for a particular raw rubber or grade of raw rubber.

### 2 Normative references

The following referenced documents are indispensable for the application of this document. For dated references, only the edition cited applies. For undated references, the latest edition of the referenced document (including any amendments) applies.

ISO 248-1:2011, *Rubber, raw — Determination of volatile-matter content — Part 1: Hot-mill method and oven method*

ISO 1629, *Rubber and latices — Nomenclature*

ISO 1795, *Rubber, raw natural and raw synthetic — Sampling and further preparative procedures*

### 3 Principle

A test portion is continuously weighed to constant mass by a thermogravimetric method using an automatic analyser with infrared drying. The volatile-matter content is calculated as the mass lost during this procedure.

## 4 Reagents

4.1 **Sodium L-tartrate dihydrate**, purity  $\geq 99$  %, for use as a standard reference material.

## 5 Apparatus

### 5.1 Automatic analyser

#### 5.1.1 General

The automatic analyser shall consist of the following components:

- a) an infrared drying unit or a far-infrared drying unit or a near-infrared drying unit;
- b) a balance, capable of weighing to the nearest 1 mg;
- c) a microprocessor, capable of controlling drying conditions such as the temperature and the drying end point, and of continuously calculating volatile-matter content as the mass lost during drying.

#### 5.1.2 Performance requirements

The accuracy of the system shall be demonstrated by performing 10 successive determinations on the standard reference material sodium L-tartrate dihydrate. The mean of the 10 determinations shall be  $(15,66 \pm 0,5)$  %. The relative standard deviation, obtained by the following equation, shall be less than 1,0 %.

$$\text{Relative standard deviation (\%)} = \frac{s}{w} \times 100$$

where

$s$  is the standard deviation;

$w$  is the mean volatile-matter content, in mass %.

## 6 Sampling and preparation of test portion

Take a laboratory sample in accordance with the method specified in ISO 1795, and then prepare a test portion of between 2 g and 15 g from the laboratory sample. The actual mass of the test portion will depend on the type of analyser, the expected volatile-matter content, and the form of the sample. For raw rubbers in bale form, the test portion shall be cut into small pieces of volume less than about 350 mm<sup>3</sup> (in the ideal case of a cubic piece, the length of a side should be about 7 mm). This operation shall be carried out as quickly as possible so as not to lose volatile matter.

The test result is taken to be the value from a single determination of the volatile-matter content.

## 7 Procedure

### 7.1 General

Either method A (which uses a pre-defined drying time) or method B (in which drying ends when the mass loss rate has decreased to a pre-defined level) can be chosen, provided the automatic analyser used offers the choice. The end point (the pre-defined drying time for method A or the pre-defined mass loss rate for method B) shall be determined for each of the two methods for each type or grade of rubber to be analysed.

## 7.2 Determination of end points for method A and method B

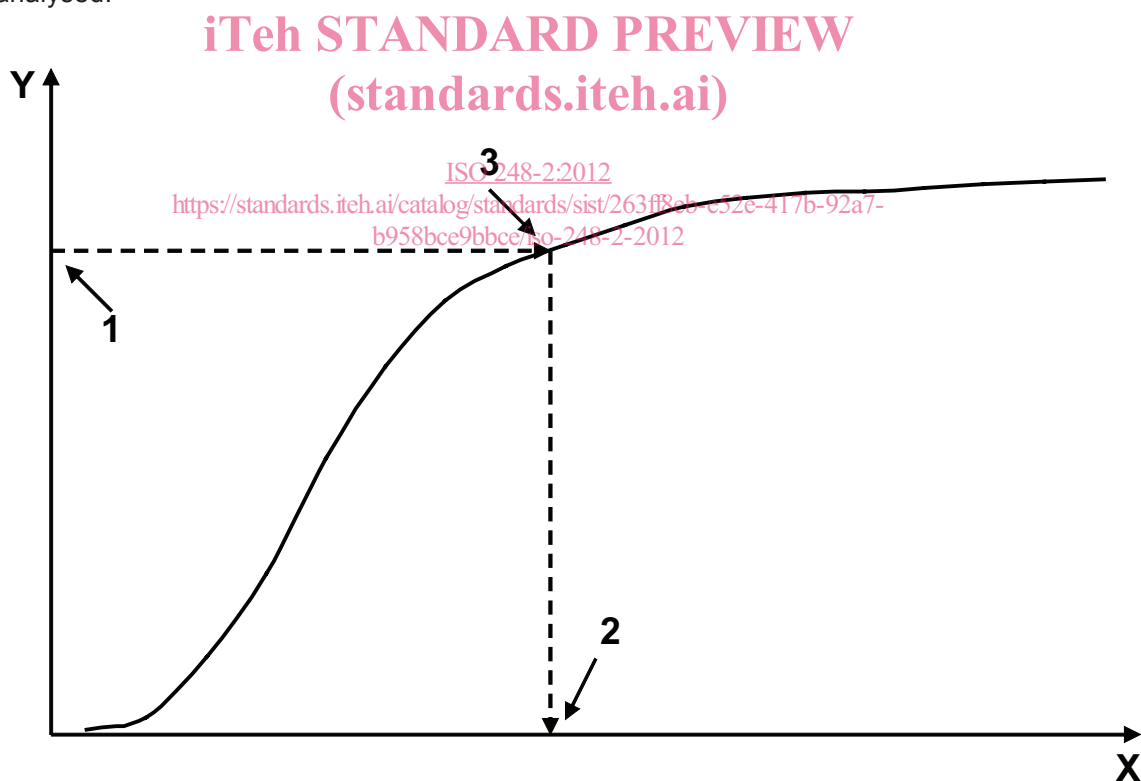
**7.2.1** First take a typical sample of the type or grade of rubber being analysed and determine its volatile-matter content in accordance with one of the methods described in ISO 248-1.

**7.2.2** Then, for method A, take a test portion of between 2 g and 15 g and weigh it to the nearest 1 mg. Operating the automatic analyser in accordance with the manufacturer's instructions, set a drying temperature (preferably between 100 °C and 120 °C) and obtain a drying profile (X-axis: time in min, Y-axis: volatile matter lost, in %). From the drying profile (see Figure 1), determine the time at which the volatile-matter content determined by the automatic analyser is equal to that determined in 7.2.1. Take this drying time as the pre-defined drying time to be used in method A for this particular type or grade of rubber.

**7.2.3** For method B, take a test portion of between 2 g and 15 g and weigh it to the nearest 1 mg. Operating the automatic analyser in accordance with the manufacturer's instructions, set a drying temperature (preferably between 100 °C and 120 °C) and obtain a drying profile (X-axis: time, Y-axis: mass). From the drying profile (see Figure 2), determine the mass loss rate at the point on the profile where the volatile-matter content corresponds to that determined in 7.2.1. Take this value of the mass loss rate as the end point for use in method B for this particular type or grade of rubber.

NOTE The automatic analyser can be programmed to calculate this value automatically.

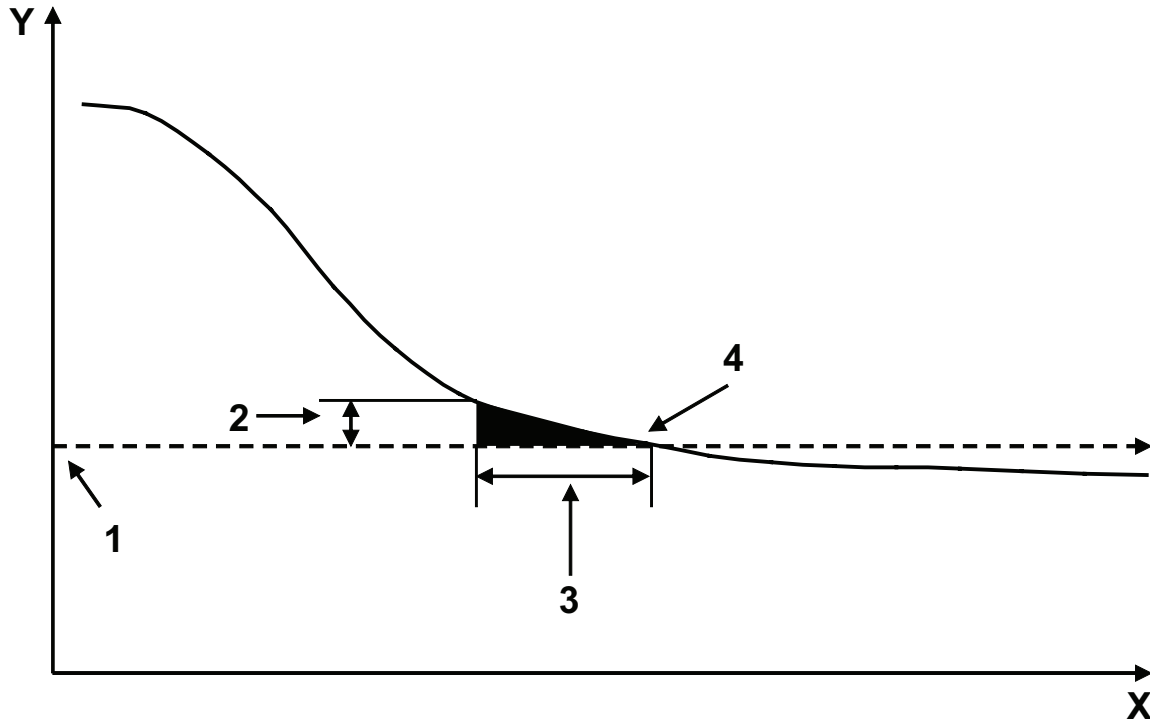
**7.2.4** 7.2.1 and either 7.2.2 or 7.2.3 shall be performed individually for each type or grade of raw rubber to be analysed.



### Key

- X time, min
- Y volatile matter lost from test portion, %
- 1 volatile-matter content determined using ISO 248-1
- 2 drying time
- 3 drying end point

**Figure 1 — Drying profile and drying end point for method A**



**Key**

X time

Y mass of test portion

1 final (dry) mass of test portion when volatile-matter content is determined using ISO 248-1

2 mass loss increment, mg

3 mass measurement interval, s

4 drying end point

**iTeh STANDARD PREVIEW**  
(standards.iteh.ai)

ISO 248-2:2012

<https://standards.iteh.ai/catalog/standards/sist/263ff8eb-e52e-417b-92a7-b958bce9bbce/iso-248-2-2012>

**Figure 2 — Drying profile and drying end point for method B**

**7.3 Method A (pre-defined drying time method)**

**7.3.1** Operate the apparatus in accordance with the manufacturer’s instructions. A general procedure is described in 7.3.2 to 7.3.7.

**7.3.2** Input the drying temperature and the pre-defined drying time determined in 7.2.2 into the microprocessor of the apparatus.

**7.3.3** Position an empty sample tray in the designated place and set the balance to zero.

**7.3.4** Take a test portion of about the same mass (within ±10 %) as was taken to determine the drying profile in 7.2.2, spread it on the sample tray as uniformly and quickly as possible and press the start button. The initial mass ( $m_A$ ) of the test portion before drying starts will be measured and recorded automatically. Drying will start immediately.

**7.3.5** When the drying time reaches the pre-defined value, drying will stop automatically.

**7.3.6** The final mass ( $m_B$ ) of the test portion after drying will be measured and recorded automatically.

**7.3.7** The volatile-matter content will be calculated automatically in accordance with 7.5.



## 7.4 Method B (in which drying ends when the mass loss rate has decreased to a pre-defined level)

7.4.1 Operate the apparatus in accordance with the manufacturer's instructions. A general procedure is described in 7.4.2 to 7.4.8.

7.4.2 Input the drying temperature and the pre-defined mass loss rate determined in 7.2.3 into the microprocessor of the apparatus.

7.4.3 Position an empty sample tray in the designated place and set the balance to zero.

7.4.4 Take a test portion of about the same mass (within  $\pm 10\%$ ) as was taken to determine the drying profile in 7.2.3, spread it on the sample tray as uniformly and quickly as possible and press the start button. The initial mass ( $m_A$ ) of the test portion before drying starts will be measured and recorded automatically. Drying will start immediately.

7.4.5 The mass of the test portion is continuously measured and recorded during drying, and the mass loss rate continuously calculated.

7.4.6 When the mass loss rate reaches the pre-defined value, drying will stop automatically.

7.4.7 The final mass ( $m_B$ ) of the test portion after drying will be measured and recorded automatically.

7.4.8 The volatile-matter content will be calculated automatically in accordance with 7.5.

## 7.5 Calculation of volatile-matter content

The volatile-matter content is calculated as follows:

$$w = \frac{(m_A - m_B)}{m_A} \times 100$$

where

- $w$  is the volatile-matter content, in mass %;
- $m_A$  is the mass of the test portion before drying, in g;
- $m_B$  is the mass of the test portion after drying, in g.

## 8 Precision

See Annex B.

## 9 Test report

The test report shall include the following particulars:

- a) full details of the sample of raw rubber tested;
- b) test method:
  - 1) a reference to this part of ISO 248,
  - 2) the method used (method A or method B),
  - 3) full details of the apparatus and measurement conditions,