



**SLOVENSKI STANDARD**  
**SIST EN 786:1996**

**01-november-1996**

---

**Oprema za nego vrta - Električno gnane, ročno vodljive in prenosne motorne kose za trate in robove trat - Mehanska varnost**

Garden equipment - Electrically powered walk-behind and hand-held lawn trimmers and lawn edge trimmers - Mechanical safety

Gartengeräte - Elektrisch betriebene handgeführte und handgehaltene Rasentrimmer und Rasenkantentrimmer - Mechanische Sicherheit

Matériel de jardinage - Coupe gazon et coupe-bordures électriques portatifs et a conducteur a pied - Sécurité mécanique

<https://standards.iteh.ai/catalog/standards/sist/0001469c-e535-45b3-9ecd-95799f780734/sist-en-786-1996>

**Ta slovenski standard je istoveten z: EN 786:1996**

---

**ICS:**

65.060.70      Vrtnarska oprema      Horticultural equipment

**SIST EN 786:1996**      **en**

**iTeh STANDARD PREVIEW**  
**(standards.iteh.ai)**

SIST EN 786:1996

<https://standards.iteh.ai/catalog/standards/sist/0001469c-e535-45b3-9ecd-95799f780734/sist-en-786-1996>

EUROPEAN STANDARD

EN 786

NORME EUROPÉENNE

EUROPÄISCHE NORM

May 1996

ICS 65.060.00

Descriptors: agricultural machinery, portable equipment, cutting tools, hand tools, lawn trimmers, safety requirements, accident prevention, safety devices, mechanical strength, rigidity, hazards, tests, marking, technical notices

English version

**Garden equipment - Electrically powered  
walk-behind and hand-held lawn trimmers and  
lawn edge trimmers - Mechanical safety**

Matériel de jardinage - Coupe gazon et  
coupe-bordures électriques portatifs et à  
conducteur à pied - Sécurité mécanique

Gartengeräte - Elektrisch betriebene  
handgeführte und handgehaltene Rasentrimmer und  
Rasenkantentrimmer - Mechanische Sicherheit

**STANDARD PREVIEW**  
(standards.iteh.ai)  
SIST EN 786:1996  
<https://standards.iteh.ai/catalog/standards/sist/0001469c-e535-45b3-9ecd-95799f780734/sist-en-786-1996>

This European Standard was approved by CEN on 1996-04-20. CEN members are bound to comply with the CEN/CENELEC Internal Regulations which stipulate the conditions for giving this European Standard the status of a national standard without any alteration.

Up-to-date lists and bibliographical references concerning such national standards may be obtained on application to the Central Secretariat or to any CEN member.

The European Standards exist in three official versions (English, French, German). A version in any other language made by translation under the responsibility of a CEN member into its own language and notified to the Central Secretariat has the same status as the official versions.

CEN members are the national standards bodies of Austria, Belgium, Denmark, Finland, France, Germany, Greece, Iceland, Ireland, Italy, Luxembourg, Netherlands, Norway, Portugal, Spain, Sweden, Switzerland and United Kingdom.

**CEN**

European Committee for Standardization  
Comité Européen de Normalisation  
Europäisches Komitee für Normung

Central Secretariat: rue de Stassart, 36 B-1050 Brussels

Page 2  
EN 786:1996

<b>Contents</b>	<b>Page</b>
<b>Foreword</b>	3
<b>0 Introduction</b>	4
<b>1 Scope</b>	4
<b>2 Normative references</b>	5
<b>3 Definitions</b>	5
<b>4 Safety requirements and/or measures</b>	6
4.1 Handling	6
4.2 Protection of power driven transmission parts	6
4.3 Guard attachment	7
4.4 Controls	7
4.5 Cutting means	7
4.6 Guarding of cutting means	9
4.7 Mechanical strength and rigidity	9
<b>5 Information for use</b>	15
5.1 Instruction handbook	15
5.2 Marking	16
<b>Annex A (normative) List of hazards</b>	18
<b>Annex B (normative) Calculation of kinetic energy</b>	23
<b>Annex C (informative) Acceptable symbols for machine marking</b>	24

iTeh STANDARD PREVIEW  
(standards.iteh.ai)

[SIST EN 786:1996](https://standards.iteh.ai/catalog/standards/sist/0001469c-e535-45b3-9ecd-95799f780734/sist-en-786-1996)

<https://standards.iteh.ai/catalog/standards/sist/0001469c-e535-45b3-9ecd-95799f780734/sist-en-786-1996>

**Foreword**

This European Standard has been prepared by Technical Committee CEN/TC 144 "Tractors and machinery for agriculture and forestry", the secretariat of which is held by AFNOR.

This European Standard shall be given the status of a national standard, either by publication of an identical text or by endorsement, at the latest by November 1996, and conflicting standards shall be withdrawn at the latest by November 1996.

This European Standard has been prepared under a mandate given to CEN by the European Commission and the European Free Trade Association, and supports essential requirements of EU Directives(s).

The annex A is normative and contains the "List of hazards".

According to the CEN/CENELEC Internal Regulations, the national standards organizations of the following countries are bound to implement this European Standard: Austria, Belgium, Denmark, Finland, France, Germany, Greece, Iceland, Ireland, Italy, Luxembourg, Netherlands, Norway, Portugal, Spain, Sweden, Switzerland and the United Kingdom.

**ITeH STANDARD PREVIEW**  
**(standards.iteh.ai)**

SIST EN 786:1996

<https://standards.iteh.ai/catalog/standards/sist/0001469c-e535-45b3-9ecc-95799f780734/sist-en-786-1996>

## 0 Introduction

The extent to which hazards are covered is indicated in the scope of this standard. In addition machinery shall comply as appropriate with EN 292 for hazards which are not covered by this standard.

The electrical safety aspects of lawn trimmers and lawn edge trimmers will be covered by a standard presently under development by CLC/TC 61F.

Walk-behind machines with metal cutting elements or cutting elements with greater than 10 J kinetic energy will be covered by a standard presently under development by CEN/TC 144/WG 7.

## 1 Scope

This European Standard specifies mechanical safety requirements and testing for the design and construction of electrically powered walk-behind and hand-held lawn trimmers and lawn edge trimmers, with cutting element(s) of non-metallic filament line or freely pivoting non-metallic cutter(s) with a kinetic energy of not more than 10 J each, and used by a standing operator primarily for cutting grass.

It describes methods for the elimination or reduction of hazards arising from their use. In addition, it specifies the type of information to be provided by the manufacturer on safe working practices.

This standard is not applicable to:

- a) scissor type or lawn trimmers and lawn edge trimmers with cutting means other than those described above;
- b) self-propelled lawn trimmers or lawn edge trimmers;
- c) lawn trimmers or lawn edge trimmers which do not have a distance of at least 600 mm between the cutting means control and the cutting head.

The electrical aspects of electrically powered lawn trimmers and lawn edge trimmers are not covered by this standard.

The list of significant hazards dealt with in this standard is given in annex A. Annex A also indicates the hazards which have not been dealt with.

Environmental aspects have not been considered in this standard.

This European Standard applies primarily to machines which are manufactured after the date of issue of this standard.

NOTE: The method of calculating the kinetic energy for the purposes of this standard is given in annex B.

## 2 Normative references

This European Standard incorporates by dated or undated reference, provisions from other publications. These normative references are cited at the appropriate places in the text and the publications are listed hereafter. For dated references, subsequent amendments to or revisions of any of these publications apply to this European Standard only when incorporated in it by amendment or revision. For undated references the latest edition of the publication referred to applies.

EN 292-1:1991	Safety of machinery - Basic concepts, general principles for design - Part 1 : Basic terminology, methodology
EN 292-2:1991	Safety of machinery - Basic concepts, general principles for design - Part 2 : Technical principles and specifications
EN 294:1992	Safety of machinery - Safety distances to prevent danger zones being reached by the upper limbs
ISO 3767-1 : 1991	Tractors, machinery for agriculture and forestry, powered lawn and garden equipment - Symbols for operator controls and other displays - Part 1 : Common symbols
ISO 3767-3 : 1995	Tractors, machinery for agriculture and forestry, powered lawn and garden equipment - Symbols for operator controls and other displays - Part 3 : Symbols for powered lawn and garden equipment

## 3 Definitions

For the purposes of this standard the following definitions apply:

- 3.1 hand-held:** Supported by hand, possibly assisted by wheel(s), skids or harness, etc.
- 3.2 walk-behind:** Ground supported, controlled by an operator walking behind.
- 3.3 lawn trimmer:** Grass trimming machine where the cutting means operates in a plane approximately parallel to the ground.
- 3.4 lawn edge trimmer:** Grass trimming machine where the cutting means operates in a plane approximately perpendicular to the ground.
- 3.5 cutting means:** Mechanism used to provide the cutting action in which one or more cutting elements, cutting by impact, rotate about an axis normal to the cutting plane.
- 3.6 cutting element:** Single non-metallic filament line or freely pivoting non-metallic cutter.
- 3.7 cutting head:** A support system for the cutting element.

**3.8 cutting means control:** A device activated by the operator's hand or finger, for controlling the cutting means movement.

## 4 Safety requirements and/or measures

### 4.1 Handling

Hand-held lawn trimmers and lawn edge trimmers shall have at least one handle.

All hand-held lawn trimmers and lawn edge trimmers with a mass of more than 3,5 kg shall have two handles and the distance between the centres of the two handles shall be at least 250 mm.

NOTE: This measurement of 250 mm does not apply to two handled lawn trimmers with a mass of 3,5 kg or less.

Additionally, hand-held lawn trimmers and lawn edge trimmers with a mass of more than 6 kg shall also have at least a single shoulder harness and those with a mass of more than 7,5 kg shall have a double shoulder harness.

The mass of the machine shall be determined in its heaviest condition for normal use and without cable.

The gripping length of any handle required by this standard shall be at least 100 mm.

If a part containing the motor complies with the dimensions pertaining to handles it may be considered as a handle.

The gripping length of a bail or closed handle shall comprise any length that is straight or curved at a radius of greater than 100 mm together with any blend radius but not more than 10 mm at either or both ends of the gripping surface.

If a straight handle is supported centrally (i.e. 'T' type) the gripping length shall be calculated as follows:

- a) for handles with a periphery (not including the support) less than 80 mm the gripping length is the sum of the two parts either side of the support;
- b) for handles with a periphery (not including the support) of 80 mm or more the gripping length is the complete length from end to end.

Where appropriate the part of the handle containing the cutting means control actuator shall be counted as part of the handle gripping length. Finger grip or similar superimposed profiles shall not affect the method of calculating handle gripping length.

### 4.2 Protection of power driven transmission parts (other than the cutting means)

All power driven transmission parts shall be guarded to prevent the operator's contact with these parts.



All apertures and safety distances shall conform with 4.5.1 and 4.5.3 of EN 294:1992. Compliance shall be checked by inspection.

### 4.3 Guard attachment

All guards required by this standard shall be fixed guards in accordance with 3.22.1 of EN 292-1:1991 or the construction of the machine shall be such that it cannot be used without the guard in its guarding position in accordance with 3.22.4 of EN 292-1:1991.

### 4.4 Controls

**4.4.1** One cutting means control shall be provided and either this shall require two separate and dissimilar actions before the cutting elements can be driven or the control shall be guarded to prevent inadvertent operation. There shall be no means of locking this control in the 'on' position and the cutting element shall come to rest when the control is released.

Compliance shall be checked by inspection and for a guarded cutting means control it shall not be possible to operate the control by means of a  $(100 \pm 1)$  mm diameter solid sphere.

**4.4.2** Controls, where the purpose is not obvious, shall have the function, direction and method of operation clearly identified by a durable marking.

Detailed instructions on the operation of all controls shall be provided in the instruction handbook (see 5.1).

SIST EN 786:1996

<https://standards.iteh.ai/catalog/standards/sist/0001469c-e535-45b3-9ecd->

NOTE: Symbols in accordance with ISO 3767-1 and ISO 3767-3 may be used as appropriate.

### 4.5 Cutting means

**4.5.1** A cutting means shall consist of one or more non-metallic cutting elements mounted on or emergent from a generally circular cutting head.

**4.5.2** A cutting element shall consist of one of the following (see figure 1):

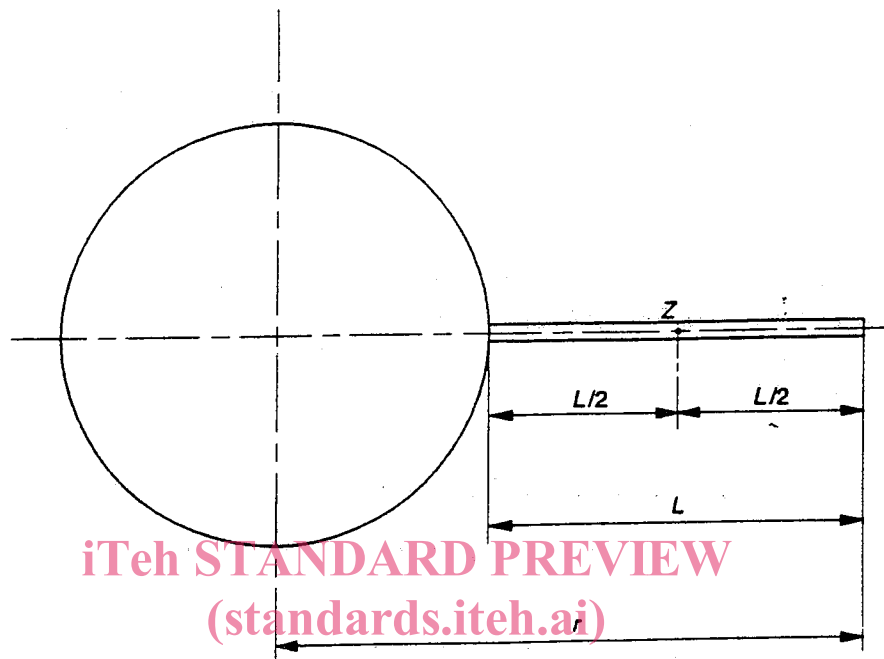
- a) a non-metallic filament line; or
- b) a non-metallic freely pivoting cutter.

Machines having cutting means using one or more cutting elements of continuous filament line (e.g. wound on a spool contained either in the cutting head or other attachment) shall incorporate a means to automatically limit the line to its correct operating length after the line has been extended and/or the machine is operated.

The machine manufacturer shall not supply metallic cutting elements which can replace the non-metallic ones.

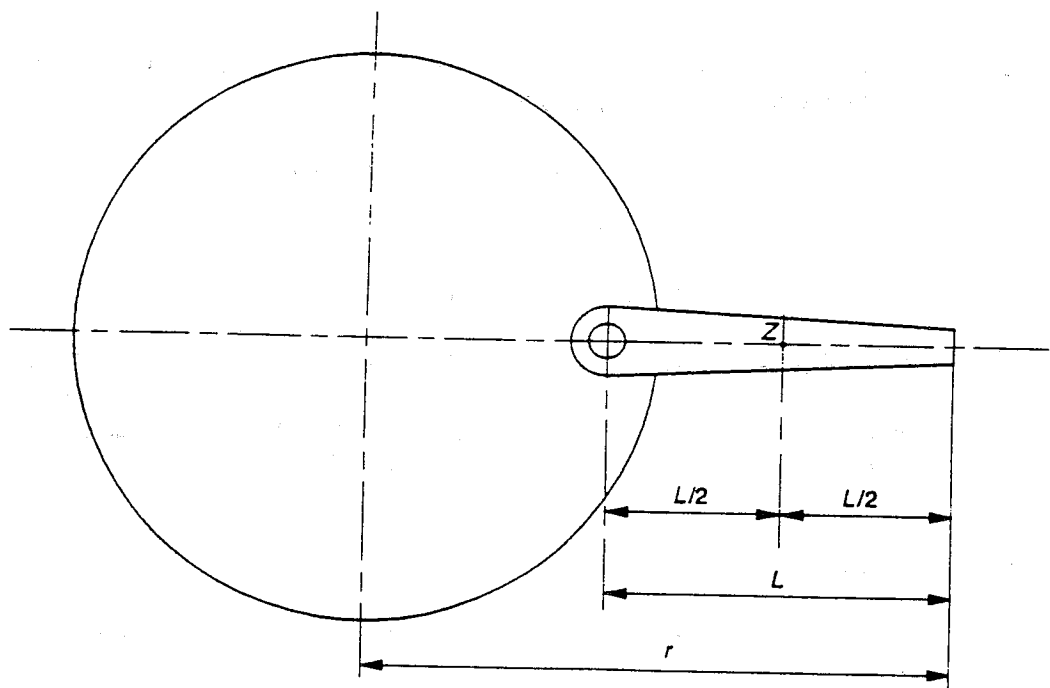
**4.5.3** The kinetic energy of a cutting element shall be determined in accordance with annex B.

Polyamide cutting elements shall be stored at  $(20 \pm 3)^{\circ}\text{C}$  and atmospheric humidity for at least seven days before testing.



SIST EN 786:1996  
<https://standards.iteh.ai/catalog/standards/sist/0001469c-e535-45b3-9ecc-95799f780734/sist-en-786-1996>

**a) Filament line (see 4.5.2a)**



**b) Pivoting cutter (see 4.5.2b)**

**Figure 1: Cutting means**

## 4.6 Guarding of cutting means

### 4.6.1 General

Guards shall be imperforate and not be detachable without the use of a tool.

NOTE: As an alternative to the guarding requirements of 4.6 a thrown object test is under study. If this is approved it will offer alternative guarding specifications for some or all configurations of lawn trimmers and lawn edge trimmers.

### 4.6.2 Lawn trimmers

Lawn trimmers shall be guarded on the operator's side as a minimum, to the extent shown in figure 2. The radius 'x' of the guard shall not be smaller than the major swept radius of the cutting head, and the guard shall extend beyond the plane of the cutting element by at least 3 mm for walk-behind lawn trimmers and at least 10 mm for hand-held lawn trimmers. The guard shall extend at least 45° from the axis of the handle on the side where the cutting element is moving away from the operator and at least 90° from the axis of the handle on the side where the cutting element is moving towards the operator.

NOTE: The vertex of the angle lies on the axis of the cutting head spindle.

### 4.6.3 Lawn edge trimmers

Lawn edge trimmers shall be guarded, as a minimum, to the extent shown in figure 3. The radius 'y' of the guard shall not be smaller than the major swept radius of the cutting head. The guard shall extend beyond the plane of the cutting element by at least 10 mm. With the lawn edge trimmer in its normal position of use the guard shall extend a minimum of 90° from the vertical towards the ground on the side where the cutting element is moving upwards and a minimum of 45° from the vertical towards the ground on the side where the cutting element is moving downwards.

NOTE: The vertex of the angle lies on the axis of the cutting head spindle.

## 4.7 Mechanical strength and rigidity

### 4.7.1 General

All the tests of 4.7 shall be carried out when the temperature of the parts to be tested has stabilized to an ambient temperature of  $(20 \pm 3)^\circ\text{C}$ .

### 4.7.2 Cutting means guard (mechanical strength and rigidity)

4.7.2.1 The mechanical strength and rigidity of cutting means guards of trimmers shall be adequate for normal use. Compliance shall be checked by the tests given in 4.7.2.2 and 4.7.2.3 or 4.7.2.4.