

ETSI ES 203 700 V1.1.1 (2021-02)



**Environmental Engineering (EE);
Sustainable power feeding solutions for 5G network
(standards.iteh.ai)**

[ETSI ES 203 700 V1.1.1 \(2020-12\)](https://standards.iteh.ai/catalog/standards/sist/7f4cd929-50db-420b-83bc-c7b68f331f92/etsi-es-203-700-v1-1-1-2020-12)
<https://standards.iteh.ai/catalog/standards/sist/7f4cd929-50db-420b-83bc-c7b68f331f92/etsi-es-203-700-v1-1-1-2020-12>

Reference

DES/EE-0269

Keywords

5G, cable, energy efficiency, hybrid, power,
remote, sustainability**ETSI**650 Route des Lucioles
F-06921 Sophia Antipolis Cedex - FRANCE

Tel.: +33 4 92 94 42 00 Fax: +33 4 93 65 47 16

Siret N° 348 623 562 00017 - NAF 742 C
Association à but non lucratif enregistrée à la
Sous-Préfecture de Grasse (06) N° 7803/88iTech STANDARD PREVIEW
(standards.iteh.ai)**Important notice**

ETSI ES 203 700 V1.1.1 (2021-12)
<https://standards.iteh.ai/catalog/standards/sist/7f4cd929-50db-420b-83bc-c76035119/etsi-es-203-700-v1-1-1-2021-12>
 The present document can be downloaded from:
<http://www.etsi.org/standards-search>

The present document may be made available in electronic versions and/or in print. The content of any electronic and/or print versions of the present document shall not be modified without the prior written authorization of ETSI. In case of any existing or perceived difference in contents between such versions and/or in print, the prevailing version of an ETSI deliverable is the one made publicly available in PDF format at www.etsi.org/deliver.

Users of the present document should be aware that the document may be subject to revision or change of status. Information on the current status of this and other ETSI documents is available at <https://portal.etsi.org/TB/ETSIDeliverableStatus.aspx>

If you find errors in the present document, please send your comment to one of the following services:
<https://portal.etsi.org/People/CommiteeSupportStaff.aspx>

Copyright Notification

No part may be reproduced or utilized in any form or by any means, electronic or mechanical, including photocopying and microfilm except as authorized by written permission of ETSI.

The content of the PDF version shall not be modified without the written authorization of ETSI.

The copyright and the foregoing restriction extend to reproduction in all media.

© ETSI 2021.
 All rights reserved.

DECT™, PLUGTESTS™, UMTS™ and the ETSI logo are trademarks of ETSI registered for the benefit of its Members. 3GPP™ and LTE™ are trademarks of ETSI registered for the benefit of its Members and of the 3GPP Organizational Partners.

oneM2M™ logo is a trademark of ETSI registered for the benefit of its Members and of the oneM2M Partners.

GSM® and the GSM logo are trademarks registered and owned by the GSM Association.

Contents

Intellectual Property Rights	5
Foreword.....	5
Modal verbs terminology.....	5
Executive summary	5
Introduction	6
1 Scope	7
2 References	7
2.1 Normative references	7
2.2 Informative references.....	8
3 Definition of terms, symbols and abbreviations.....	9
3.1 Terms.....	9
3.2 Symbols.....	9
3.3 Abbreviations	9
4 5G networks	10
4.1 5G Network general description.....	10
4.2 Cells coverage and impacts on powering strategy.....	11
4.3 Type of 5G network and impacts on power load, power profile and feeding solution.....	14
5 Powering solutions	16
5.0 General	16
5.1 Convergence and Core Room Power Supply.....	16
5.1.1 Scenario 1: -48 V DC Power Supply Solution.....	16
5.1.2 Scenario 2: up to 400 V DC Power Supply Solution.....	17
5.1.3 5G Power Supply Solution for aggregation and core equipment room	17
5.2 Impact of 5G in C-RAN&D-RAN Sites.....	18
5.2.1 Changes due to 5G implementation.....	18
5.2.2 Construction and Modernization Challenges Posed by 5G Network Evolution	18
5.2.3 Problems to Be Addressed by 5G Power Systems.....	19
5.2.3.1 Low Cost Deployment	19
5.2.3.2 Fast Construction	19
5.2.3.3 Efficient and Energy Saving	19
5.2.3.4 Smooth Evolution	20
5.2.3.5 Simple O&M.....	20
5.2.4 C-RAN & D-RAN Powering Scenario	20
5.2.4.1 Networking diagram of powering scenario	20
5.2.5 5G Power Solution for C-RAN&D-RAN site.....	21
5.2.6 Intelligent Features for C-RAN&D-RAN site	23
5.2.6.1 Intelligent Peak Shaving	23
5.2.6.2 Advance Sleep/Hibernation Mode function.....	25
5.3 Intelligent Management.....	25
5.3.0 General.....	25
5.3.1 Power availability Management	25
5.3.2 SEE Management	26
5.3.3 Remote Maintenance	26
5.3.4 intelligent security	26
5.3.5 Intelligent Energy Storage System.....	27
5.4 Renewable energy solution for 5G base stations.....	27
5.5 Hybrid architecture scenario, with integration of power and optical networks	28
6 Energy Efficiency.....	32
6.1 Power equipment energy efficiency	32
6.2 NE static and dynamic power requirement management and impact on powering	32
7 Dependability, reliability and maintenance.....	32

8	Environmental impact	33
Annex A (informative):	Which power and where for 5G cells	34
Annex B (informative):	Method of optimization of equipment, power and energy	35
Annex C (informative):	Example of powering requirement definition on site and remote powering area.....	37
Annex D (informative):	Example of required output voltage variation under correlation models between different load and different cable length.....	38
Annex E (informative):	Digital Reconfigurable Battery solution for 5G base stations.....	40
Annex F (informative):	Bibliography	42
History		43

iTeh STANDARD PREVIEW (standards.iteh.ai)

[ETSI ES 203 700 V1.1.1 \(2020-12\)](https://standards.iteh.ai/catalog/standards/sist/7f4cd929-50db-420b-83bc-c7b68f331f92/etsi-es-203-700-v1-1-1-2020-12)

<https://standards.iteh.ai/catalog/standards/sist/7f4cd929-50db-420b-83bc-c7b68f331f92/etsi-es-203-700-v1-1-1-2020-12>

Intellectual Property Rights

Essential patents

IPRs essential or potentially essential to normative deliverables may have been declared to ETSI. The information pertaining to these essential IPRs, if any, is publicly available for **ETSI members and non-members**, and can be found in ETSI SR 000 314: "*Intellectual Property Rights (IPRs); Essential, or potentially Essential, IPRs notified to ETSI in respect of ETSI standards*", which is available from the ETSI Secretariat. Latest updates are available on the ETSI Web server (<https://ipr.etsi.org/>).

Pursuant to the ETSI IPR Policy, no investigation, including IPR searches, has been carried out by ETSI. No guarantee can be given as to the existence of other IPRs not referenced in ETSI SR 000 314 (or the updates on the ETSI Web server) which are, or may be, or may become, essential to the present document.

Trademarks

The present document may include trademarks and/or tradenames which are asserted and/or registered by their owners. ETSI claims no ownership of these except for any which are indicated as being the property of ETSI, and conveys no right to use or reproduce any trademark and/or tradename. Mention of those trademarks in the present document does not constitute an endorsement by ETSI of products, services or organizations associated with those trademarks.

Foreword

This ETSI Standard (ES) has been produced by ETSI Technical Committee Environmental Engineering (EE).

IT'CH STANDARD PREVIEW
(standards.itech.ai)

Modal verbs terminology

In the present document "**shall**", "**shall not**", "**should**", "**should not**", "**may**", "**need not**", "**will**", "**will not**", "**can**" and "**cannot**" are to be interpreted as described in clause 3.2 of the [ETSI Drafting Rules](#) (Verbal forms for the expression of provisions).

"**must**" and "**must not**" are **NOT** allowed in ETSI deliverables except when used in direct citation.

Executive summary

The present document defines power feeding solutions for 5G, converged wireless and wireline access equipment and network, taking into consideration their enhanced requirements on service availability and reliability, the new deployment scenarios, together with the environmental impact of the proposed solutions.

The minimum requirements of different solutions including power feeding structures, components, backup, safety requirements, environmental conditions are also defined.

The present document is applicable to powering of both mobile and fixed access network elements, in particular on equipment that have similar configurations and needs.

Introduction

Mobile and fixed networks are evolving towards ultra-broadband and, with 5G, are going to converge. The use of much broader frequency ranges, up to 60 GHz, where radio propagation is an issue, is going to impact the network deployment topologies. In particular, the use of higher frequencies and the need to cover hot/black spots and indoor locations, will make it necessary to deploy much denser amount of radio nodes.

5G is introducing major improvements on Massive MIMO, IoT, low latency, unlicensed spectrum, and with V2x for the vehicular market. Support of some of these services will have a relevant effect on the power ratings and the energy consumption at the radio base station.

A major new service area of 5G impacting the powering and backup will be the URLLC (Ultra Reliable Low Latency Communication) as its support will increase the service availability demands by many orders of magnitude. Supporting such high availability goals will be partly reached through redundant network coverage, but a main support will have to come through newly designed powering architectures. This will be made even more challenging as 5G will require the widespread introduction of distributed small cells. ETSI TS 110 174-2-2 [i.5] analyses the implications and indicates possible solutions to fulfil such high demanding availability goals.

There is a need to define sustainable and smart powering solutions, able to adapt to the present mobile network technologies and able to evolve to adapt to their evolution. The flexibility would be needed at level of power interface, power consumption, architecture tolerant to power delivery point changes and including control-monitoring.

This means that it should include from the beginning appropriate modularity and reconfiguration features for local powering and energy storage and for remote powering solutions including power lines sizing, input and output conversion power and scalable sources.

The present document was developed jointly by ETSI TC EE and ITU-T Study Group 5. It is published respectively by ITU and ETSI as Recommendation ITU-T L.1210 [i.7] and ETSI ES 203 700 (the present document), which are technically-equivalent.

(standards.iteh.ai)

[ETSI ES 203 700 V1.1.1 \(2020-12\)](https://standards.iteh.ai/catalog/standards/sist/7f4cd929-50db-420b-83bc-c7b68f331f92/etsi-es-203-700-v1-1-1-2020-12)

<https://standards.iteh.ai/catalog/standards/sist/7f4cd929-50db-420b-83bc-c7b68f331f92/etsi-es-203-700-v1-1-1-2020-12>

1 Scope

The present document defines power feeding solutions for 5G, converged wireless and wireline access equipment and network, taking into consideration their enhanced requirements on service availability and reliability, the new deployment scenarios, together with the environmental impact of the proposed solutions.

The minimum requirements of different solutions including power feeding structures, components, backup, safety requirements, environmental conditions are also defined.

The present document is applicable to powering of both mobile and fixed access network elements, in particular on equipment that have similar configurations and needs.

The future development of 5G networks will create a new scenario in which the density of radio cells will increase considerably, together with the increase of wireline network equipment that are going to be installed in the vicinity to the users, thereby creating the need to define new solutions for powering that will be environmentally friendly, sustainable, dependable, smart and visible remotely.

The -48 V DC, up to 400 V DC local and remote power solutions defined respectively in ETSI EN 300 132-2 [2], ETSI EN 302 099 [i.10] and ETSI EN 300 132-3-1 [3] or Recommendation ITU-T L.1200 [i.13] will be considered as the standards in force for power facilities, together with IEEE 802.3TM [i.18] (PoE).

2 References

2.1 Normative references

References are either specific (identified by date of publication and/or edition number or version number) or non-specific. For specific references, only the cited version applies. For non-specific references, the latest version of the referenced document (including any amendments) applies.

Referenced documents which are not found to be publicly available in the expected location might be found at <https://docbox.etsi.org/Reference/>.

NOTE: While any hyperlinks included in this clause were valid at the time of publication, ETSI cannot guarantee their long term validity.

The following referenced documents are necessary for the application of the present document.

- [1] ETSI EN 300 132-1 (V2.1.1) (03-2019): "Environmental Engineering (EE); Power supply interface at the input to Information and Communication Technology (ICT) equipment; Part 1: Alternating Current (AC)".
- [2] ETSI EN 300 132-2 (V2.6.1) (04-2019): "Environmental Engineering (EE); Power supply interface at the input of Information and Communication Technology (ICT) equipment; Part 2: -48 V Direct Current (DC)".
- [3] ETSI EN 300 132-3-1 (V2.1.1) (02-2012): "Environmental Engineering (EE); Power supply interface at the input to telecommunications and datacom (ICT) equipment; Part 3: Operated by rectified current source, alternating current source or direct current source up to 400 V; Sub-part 1: Direct current source up to 400 V".
- [4] ETSI ES 203 199 (V1.3.1) (02-2015): "Environmental Engineering (EE); Methodology for environmental Life Cycle Assessment (LCA) of Information and Communication Technology (ICT) goods, networks and services".
- [5] Recommendation ITU-T L.1410 (12/2014): "Methodology for environmental life cycle assessments of information and communication technology goods, networks and services".

2.2 Informative references

References are either specific (identified by date of publication and/or edition number or version number) or non-specific. For specific references, only the cited version applies. For non-specific references, the latest version of the referenced document (including any amendments) applies.

NOTE: While any hyperlinks included in this clause were valid at the time of publication, ETSI cannot guarantee their long term validity.

The following referenced documents are not necessary for the application of the present document but they assist the user with regard to a particular subject area.

- [i.1] Recommendation ITU-T Q.1743 (09/2016): "IMT-Advanced references to Release 11 of LTE-Advanced evolved packet core network".
- [i.2] ETSI ES 202 336-12: "Environmental Engineering (EE); Monitoring and control interface for infrastructure equipment (power, cooling and building environment systems used in telecommunication networks); Part 12: ICT equipment power, energy and environmental parameters monitoring information model".
- [i.3] ETSI EN 301 605 (V1.1.1) (2013-10): "Environmental Engineering (EE); Earthing and bonding of 400 V DC data and telecom (ICT) equipment".
- [i.4] ETSI TS 122 261: "5G; Service requirements for next generation new services and markets (3GPP TS 22.261)".
- [i.5] ETSI TS 110 174-2-2: "Access, Terminals, Transmission and Multiplexing (ATTM); Sustainable Digital Multiservice Cities; Broadband Deployment and Energy Management; Part 2: Multiservice Networking Infrastructure and Associated Street Furniture; Sub-part 2: The use of lamp-posts for hosting sensing devices and 5G networking"
- [i.6] Recommendation ITU-T K.64 (06/2016): "Safe working practices for outside equipment installed in particular environments"
- [i.7] Recommendation ITU-T L.1210: "Sustainable power feeding solutions for 5G networks".
<https://standards.iteh.ai/catalog/standards/sist/7f4cd929-50db-420b-83bc-c7b68b531b92/etsi-es-203-700-v1-1-1-2020-12>
- [i.8] EN 50173-1: "Information technology - Generic cabling systems - Part 1: General requirement" (produced by CENELEC).
- [i.9] IEEE 802.3cg™: "IEEE Approved Draft Standard for Ethernet Amendment 5: Physical Layer Specifications and Management Parameters for 10 Mb/s Operation and Associated Power Delivery over a Single Balanced Pair of Conductors".
- [i.10] ETSI EN 302 099 (V2.1.1) (08-2014): "Environmental Engineering (EE); Powering of equipment in access network".
- [i.11] ETSI TS 103 553-1: "Environmental Engineering (EE); Innovative energy storage technology for stationary use; Part 1: Overview".
- [i.12] Recommendation ITU-T L.1001 (11/2012): "External universal power adapter solutions for stationary information and communication technology devices".
- [i.13] Recommendation ITU-T L.1200 (05/2012): "Direct current power feeding interface up to 400 V at the input to telecommunication and ICT equipment".
- [i.14] Recommendation ITU-T L.1220 (08/2017): "Innovative energy storage technology for stationary use - Part 1: Overview of energy storage".

NOTE: Available at <https://www.itu.int/ITU-T/recommendations/rec.aspx?rec=13283>.

- [i.15] Recommendation ITU-T L.1221 (11/2018): "Innovative energy storage technology for stationary use - Part 2: Battery".
- [i.16] Recommendation ITU-T L.1222 (05/2018): "Innovative energy storage technology for stationary use - Part 3: Supercapacitor technology".

- [i.17] Recommendation ITU-T L.1350 (10/2016): "Energy efficiency metrics of a base station site".
- [i.18] IEEE 802.3™-2018: "IEEE Standard for Ethernet".
- [i.19] IEEE 802.3bt™-2018: "IEEE Standard for Ethernet Amendment 2: Physical Layer and Management Parameters for Power over Ethernet over 4 pairs".
- [i.20] A Survey of 5G Network: Architecture and Emerging Technologies.
- NOTE: Available at <https://ieeexplore.ieee.org/document/7169508>.
- [i.21] 5G Frequency bands: Spectrum Allocations for Next-Gen LTE.
- NOTE: Available at <https://www.cablefree.net/wirelesstechnology/4glte/5g-frequency-bands-lte/>.

3 Definition of terms, symbols and abbreviations

3.1 Terms

For the purposes of the present document, the following terms apply:

cell: radio network object that can be uniquely identified by a user equipment from a (cell) identification that is broadcasted over a geographical area from one UTRAN or GERAN access point

NOTE 1: A Cell in UTRAN is either FDD or TDD mode.

NOTE 2: Defined in Recommendation ITU-T Q.1743 [i.1].

cloud RAN: RAN functions are partially or completely centralizing with two additional key features: pooling of baseband/hardware resources, and virtualization through general-purpose processors

distributed RAN: network development where RAN processing is fully performed at the site as in 4G

macro cells: outdoor cells with a large cell radius

NOTE: Defined in Recommendation ITU-T Q.1743 [i.1].

micro cells: small cells

NOTE: Defined in Recommendation ITU-T Q.1743 [i.1].

pico cells: cells, mainly indoor cells, with a radius typically less than 50 metres

NOTE: Defined in Recommendation ITU-T Q.1743 [i.1]

3.2 Symbols

Void.

3.3 Abbreviations

For the purposes of the present document, the following abbreviations apply:

5G	Fifth Generation
AAU	Active Antenna Unit
AC	Alternating Current
AI	Artificial Intelligence
BBU	Base Band Unit
BCS	Battery Control System
BMS	Battery Management System
BS	Base Station

C-RAN	Centralized or Cloud RAN
DC	Direct Current

NOTE: Also when used as a suffix to units of measurement.

DOD	Deep of Discharge
DP	Distribution Point
D-RAN	Distributed RAN
DSLAM	Digital Subscriber Line Access Multiplier
EV	Electrical Vehicle
FWA	Fixed Wireless Access
GND	GrouND
GPON	Gigabit Passive Optical Network
Hetnets	Heterogeneous network
ICT	Information Communication Telecommunication
IoT	Internet of Things
LFP	Lithium Iron Phosphate
MEC	Multi-access Edge Computing
MIMO	Multi Input Multi Output
mmWaves	millimetric Waves
MPPT	Maximum Power Point Tracking
NE	Network Element
OS	Optical Splitter
PAV	Power Available Value
PN	Power Node
PON	Passive Optical Network
PS	Power Splitter
PSU	Power Supply Unit
PTU	Power Transmitter Unit
PV	PhotoVoltaic
PVC	PolyVinyl Chloride
RAN	Radio Access Network
REN	Renewable ENergy
RF	Radio Frequency
RRH	Remote Radio Head
RRU	Remote Radio Unit
SEE	Site Energy Efficiency
SELV	Safety Extra Low Voltage
SOC	Status Of Charge
SOH	Status Of Health
TDD	Time Division Duplex
TTM	Time To Market
URLLC	Ultra Reliable Low Latency Communication
UTRAN	Universal Terrestrial Radio Access Network
UV	UltraViolet

STANDARD PREVIEW
(standards.iteh.ai)

<https://standards.iteh.ai/catalog/standards/sist/74cd929-50db-420b-83bc-7b68f331f92/etsi-es-203-700-v1-1-1-2020-12>

<https://standards.iteh.ai/catalog/standards/sist/74cd929-50db-420b-83bc-7b68f331f92/etsi-es-203-700-v1-1-1-2020-12>

4 5G networks

4.1 5G Network general description

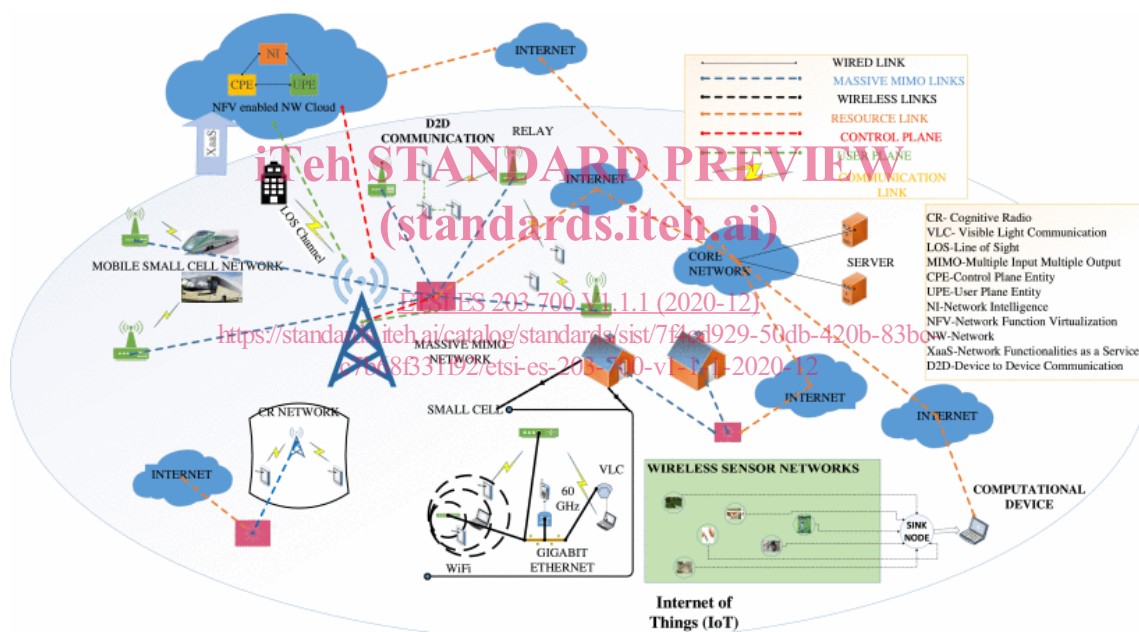
Figure 1 is presenting a general end to end schematics of 5G network to be powered.

It includes stationary and mobile equipment:

- Macro cell equipment BS for wide coverage. In most cases, they will be located in the same sites as the macro BS of the previous mobile generations. The increased energy demand and the much higher availability need of the 5G equipment will pose tough challenges to the powering infrastructure and will likely require its major upgrade both on the power capabilities and the backup duration.

- Small cell, to cover small geographical area in indoor/outdoor applications, typically to satisfy data traffic hot-spots, black-spots and to deliver services at very high frequencies (e.g. mmWaves) that could not be supported just through macro BS installations. Small cells can be subdivided into:
 - Micro cell - normally installed outdoors. Designed to support large number of users in high data traffic areas, to solve coverage issues and to support very high frequency deployment. Capable to cover medium/large cells size and suitable for application like smart cities, smart metro, etc.
 - Pico cell - normally installed indoors. Suitable for enterprises, shopping centres, stadiums applications, for extended network coverage and data throughput.
 - Femto cell - basically small mobile base stations designed to provide extended coverage for residential and SoHo applications. Poor signal strength from mobile operator's base stations can be solved using Femtocell implementation. Femtocells are primarily introduced to offload network congestion, extend coverage and increase data capacity to indoor users.
- IoT devices and concentrators.
- In network cloud distribution including edge computing.

Also Fixed Wireless Access (FWA) radio access solutions, typically in point-to-multipoint configuration with coverage across macro and small cells schemes, will contribute to the evolution of ultra-broadband future networks.



Source: <https://ieeexplore.ieee.org/document/7169508> [i.20].

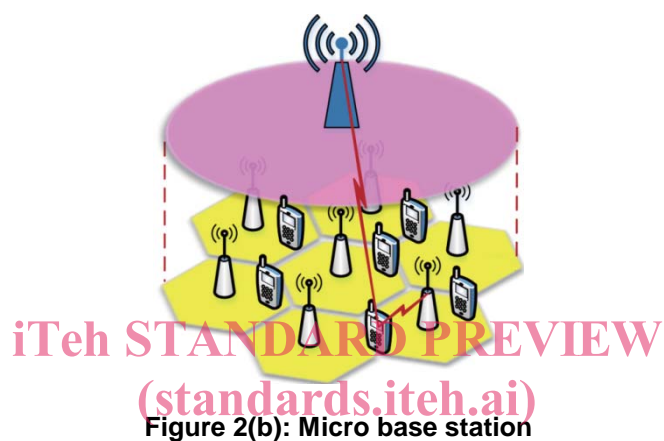
Figure 1: General principle of a 5G cellular network architecture with interconnectivity among the different emerging technologies like Massive MIMO network, Cognitive Radio

4.2 Cells coverage and impacts on powering strategy

In the 4G era, a base station covers a radius of hundreds of metres, while a 5G base station operating at mmWave may cover only 20 to 40 m, needing a much higher number of equipment to be spread-out in the field to guarantee appropriate coverage. More dense deployment will also be needed to cover high traffic areas (e.g. stadiums) and indoor locations. That could result in much higher network development complexity and costs. In addition, the deployment of additional base stations is difficult and the site resources are not easy to obtain. Therefore, 5G networks will see a major development of small cells, in the form of small base stations as the basic unit for ultra-intensive networking, that is, small base stations dense deployment. In the future, the most likely deployment mode for 5G base station construction will be low-frequency wide area coverage (macro base station) + high-frequency deep coverage (micro base station), as shown in Figures 2(a) to 2(c).



Figure 2(a): Deployment mode of the 5G base station



[ETSI ES 203 700 V1.1.1 \(2020-12\)](https://standards.iteh.ai/catalog/standards/sist/7f4cd929-50db-420b-83bc-c7b68f331f92/etsi-es-203-700-v1-1-1-2020-12)

<https://standards.iteh.ai/catalog/standards/sist/7f4cd929-50db-420b-83bc-c7b68f331f92/etsi-es-203-700-v1-1-1-2020-12>

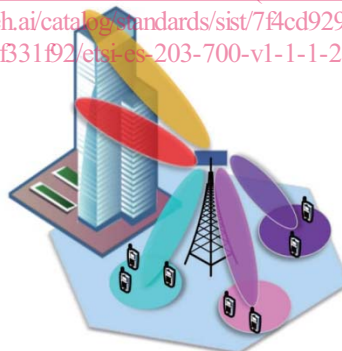


Figure 2(c): Macro base station

The typical electrical power demand for Radio Base Stations (macro cell, micro cell and pico or femto cell), with correlation to aggregated RF power, is available in Table 1, together with power needs of IoT, as they could be based on powering paradigms similar to those of the Small Cells.

Table 1: Powering related characteristics of radio base station, Small Cells and IoT

EQUIPMENT	INSTALLATION			POW. CONSUMPTION		POWERING TYPE					Backhauling connection		Aggregated RF power	
	INDOORS Private premises	INDOORS Public sites and enterprises	OUTDOORS	TYP (W)	MAX (W)	BATTERY Duration (years)	Local mains	Remote power	PoE	mimimum BACKUP time	Wireline / Wireless	Connection flavour	MIN (W)	MAX (W)
WIRELESS														
COMPLEX MACRO BASE STATION (e.g. 2/3/4/5G - multiple freq, massive MIMO and multiple operators)			X	8000	24000		X			YES many hours	Wireline	Optical		many hundreds
SIMPLE MACRO BASE STATION (e.g. 2/3/4G - single freq and single operator)			X	3000	6000		X			YES few hours	Wireline / wireless	Optical / mmWave / high speed broadband		few hundreds
MICROCELLS			X	30	250		X	X		advised minutes	Wireline	Optical / high speed broadband	1	20
PICOCELLS (including FWA nodes)		X		10	50		X		X	advised minutes	Wireline	ETH/Optical	0,1	1
FEMTOCELLS	X			5	20		X			NO	Wireline	Any Broadband	0,01	0,1
WIRELINE														
VDSL2 DSLAMs			Cabinets	150	250		X	X		advised minutes	Wireline	Optical		
G.FAST			Cabinets	25	40			X			Wireline	Optical		
IoT														
Gas & water sensing, metering	X			very low		10					Wireless	LP WAN		
Surveillance camera		X	X	5	20		X	X	X	NO	Wireline	Any Broadband		
Environmental sensing (CO2, NOX, noise, particulate ...)			X	2	10			X		NO	Wireless	LP WAN		

ETSI ES 203 700 V1.1.1 (2020-12)
<https://standards.iteh.ai/catalog/standards/sist/7f4cd929-50db-420b-83bc-c1b68131f92/etsi-es-203-700-v1-1-1-2020-12>

IT&T STANDARD PREVIEW
 (standards.iteh.ai)