



SLOVENSKI STANDARD
SIST EN 708:1996/A1:2001

01-maj-2001

Kmetijski stroji - Stroji za obdelavo tal z gnanimi delovnimi elementi - Varnost

Agricultural machinery - Soil working machines with powered tools - Safety

Landmaschinen - Bodenbearbeitungsgeräte mit kraftbetriebenen Werkzeugen - Sicherheit

Matériel agricole - Machines de travail du sol à outils animés - Sécurité

STANDARD PREVIEW
(standards.iteh.ai)

Ta slovenski standard je istoveten z: EN 708:1996/A1:2000

SIST EN 708:1996/A1:2001
<https://standards.iteh.ai/catalog/standards/sist/da049163-6f65-4b80-908a-05dd644031e4/sist-en-708-1996-a1-2001>

ICS:

65.060.20 Oprema za obdelovanje tal Soil-working equipment

SIST EN 708:1996/A1:2001

en

iTeh STANDARD PREVIEW
(standards.iteh.ai)

SIST EN 708:1996/A1:2001

<https://standards.iteh.ai/catalog/standards/sist/da049163-6f65-4b80-908a-05dd644031e4/sist-en-708-1996-a1-2001>

ICS 65.060.20

English version

**Agricultural machinery - Soil working machines with powered
tools - Safety**

Matériel agricole - Machines de travail du sol à outils
animés - Sécurité

Landmaschinen - Bodenbearbeitungsgeräte mit
kraftbetriebenen Werkzeugen - Sicherheit

This amendment A1 modifies the European Standard EN 708:1996; it was approved by CEN on 23 January 2000.

CEN members are bound to comply with the CEN/CENELEC Internal Regulations which stipulate the conditions for inclusion of this amendment into the relevant national standard without any alteration. Up-to-date lists and bibliographical references concerning such national standards may be obtained on application to the Central Secretariat or to any CEN member.

This amendment exists in three official versions (English, French, German). A version in any other language made by translation under the responsibility of a CEN member into its own language and notified to the Central Secretariat has the same status as the official versions.

CEN members are the national standards bodies of Austria, Belgium, Czech Republic, Denmark, Finland, France, Germany, Greece, Iceland, Ireland, Italy, Luxembourg, Netherlands, Norway, Portugal, Spain, Sweden, Switzerland and United Kingdom.

iTeh STANDARD PREVIEW
(standards.iteh.ai)

SIST EN 708:1996/A1:2001

<https://standards.iteh.ai/catalog/standards/sist/049165-6f65-4b80-908a-05dd644031e4/sist-en-708-1996-a1-2001>

EUROPEAN COMMITTEE FOR STANDARDIZATION
COMITÉ EUROPÉEN DE NORMALISATION
EUROPÄISCHES KOMITEE FÜR NORMUNG

Central Secretariat: rue de Stassart, 36 B-1050 Brussels

Foreword

This Amendment EN 708:1996/A1:2000 to EN 708:1996 has been prepared by Technical Committee CEN/TC 144 " Tractors and machinery for agriculture and forestry", the secretariat of which is held by AFNOR.

This Amendment to the European Standard EN 708:1996 shall be given the status of a national standard, either by publication of an identical text or by endorsement, at the latest by September 2000, and conflicting national standards shall be withdrawn at the latest by September 2000.

This Amendment to the European Standard EN 708:1996 has been prepared under a mandate given to CEN by the European Commission and the European Free Trade Association, and supports essential requirements of EU Directive(s).

For relationship with EU Directive(s), see informative Annex ZA, which is an integral part of this standard.

According to the CEN/CENELEC Internal Regulations, the national standards organizations of the following countries are bound to implement this European Standard: Austria, Belgium, Czech Republic, Denmark, Finland, France, Germany, Greece, Iceland, Ireland, Italy, Luxembourg, Netherlands, Norway, Portugal, Spain, Sweden, Switzerland and the United Kingdom.

iTeh STANDARD PREVIEW
(standards.iteh.ai)

[SIST EN 708:1996/A1:2001](https://standards.iteh.ai/catalog/standards/sist/da049163-6f65-4b80-908a-05dd644031e4/sist-en-708-1996-a1-2001)

<https://standards.iteh.ai/catalog/standards/sist/da049163-6f65-4b80-908a-05dd644031e4/sist-en-708-1996-a1-2001>

0 Introduction

Replace this clause by the following:

"The extent to which hazards are covered is indicated in the scope of this standard. These hazards are specific to soil working machines with powered tools.

The hazards that are common to all agricultural machines (self-propelled, mounted, semi-mounted and trailed) will be dealt with in a standard currently in preparation (EN 1553)."

1 Scope

Replace the 3rd paragraph by the following:

"It describes methods for elimination or reduction of risks which need specific requirements for soil working machines with powered tools. It does not deal with general hazards, particularly general hazards related to the mobility. These aspects will be dealt with in a standard currently in preparation (EN 1553)."

2 Normative references

Add the following reference :

"EN 1553 :1999, *Agricultural machinery – Agricultural self-propelled, mounted, semi-mounted and trailed machines – Common safety requirements*".

4 Safety requirements and/or measures

4.1 General

Replace this subclause by the following:

"Machines shall comply as appropriate with EN 292 for hazards which are not dealt with and especially with Annex A of EN 292-2:1991/A1:1995 when EN 292 does not give precise requirements.

Unless otherwise specified in this standard, the machine shall comply with the requirements of EN 1553:1999 and with tables 1, 3, 4 and 6 of EN 294:1992."

iTeh STANDARD PREVIEW
(standards.iteh.ai)

4.2.2.1

[SIST EN 708:1996/A1:2001](https://standards.iteh.ai/catalog/standards/sist/da049163-6f65-4b80-908a-05dd644031e4/sist-en-708-1996-a1-2001)

Modify the 1st paragraph as follows: <https://standards.iteh.ai/catalog/standards/sist/da049163-6f65-4b80-908a-05dd644031e4/sist-en-708-1996-a1-2001>

"Machines shall be designed or guarded in such a way that any unintentional contact with the powered tools at the front, at the rear, at the sides and on the top is avoided."

Modify the 1st dash as follows, and introduce it after the present 2nd dash:

"— On the top, the area between the barriers shall be completely guarded:

- the area which covers the tools at least up to the outer points of their path shall be guarded by an imperforate guard;

— the area between the barriers and the edge of the top guard shall be guarded in such a way that it shall not be possible to pass a 61_{-1}^0 mm spherical test gauge through this area . The guarding may be achieved by a guard or any part of the machine or a combination of both.

The test gauge shall be of mild steel and shall be applied by hand. The machine and its guards shall be set in the most unfavourable positions."

Add the following paragraphs:

"The top guard, the barriers and the parts of the machine ensuring the guarding shall withstand a vertical downwards load of 1 200 N. The barriers shall additionally withstand the following horizontal loads:

- 600 N for machines with a horizontal axis intended to be used with a tractor whose maximum power as given in the instruction handbook is less than or equal to 37 kW ;
- 1 000 N for the other machines.

These requirements shall be checked by the test procedure and the test acceptance defined in Annex B of prEN 1553:1999"

4.4 Adjustment of the working depth

Replace this subclause by the following :

"It shall be possible for the operator to adjust the working depth by means of manual control(s) located:

- on the machine and accessible by the operator standing on the ground; and/or
- on the tractor and accessible only from the driving position.

For the manual control(s) located on the machine, the following requirements a, b and c shall be fulfilled:

- a) the adjustment shall be possible with the working tools stopped ;
- b) the manual control(s) shall be located on the top, or on the sides, front or rear of the machine, at a maximum distance of 550 mm from the overall outer limits of the machine. This distance shall be measured from the accessible zone (see figure 1) parallel to the forward direction for manual controls accessible from the front or the rear of the machine, and at right angles to the forward direction for manual controls accessible from the sides.

If the machine is so designed that rollers or other similar equipments can be used as integral part of the machine during cultivation, the distance of 550 mm shall be measured from the outer edge of these equipments.

- c) no manual control shall be located in the shaded area as shown in figures 5 a and 5 b.

These requirements apply to manual controls which need to be actuated when modifying the working depth according to the instruction handbook."

ITeH STANDARD PREVIEW
(standards.iteh.ai)

SIST EN 708:1996/A1:2001
<https://standards.iteh.ai/catalog/standards/sist/da049163-6165-4680-908a-05dd644031e4/sist-en-708-1996-a1-2001>

6 Information for use

6.1 Instruction handbook

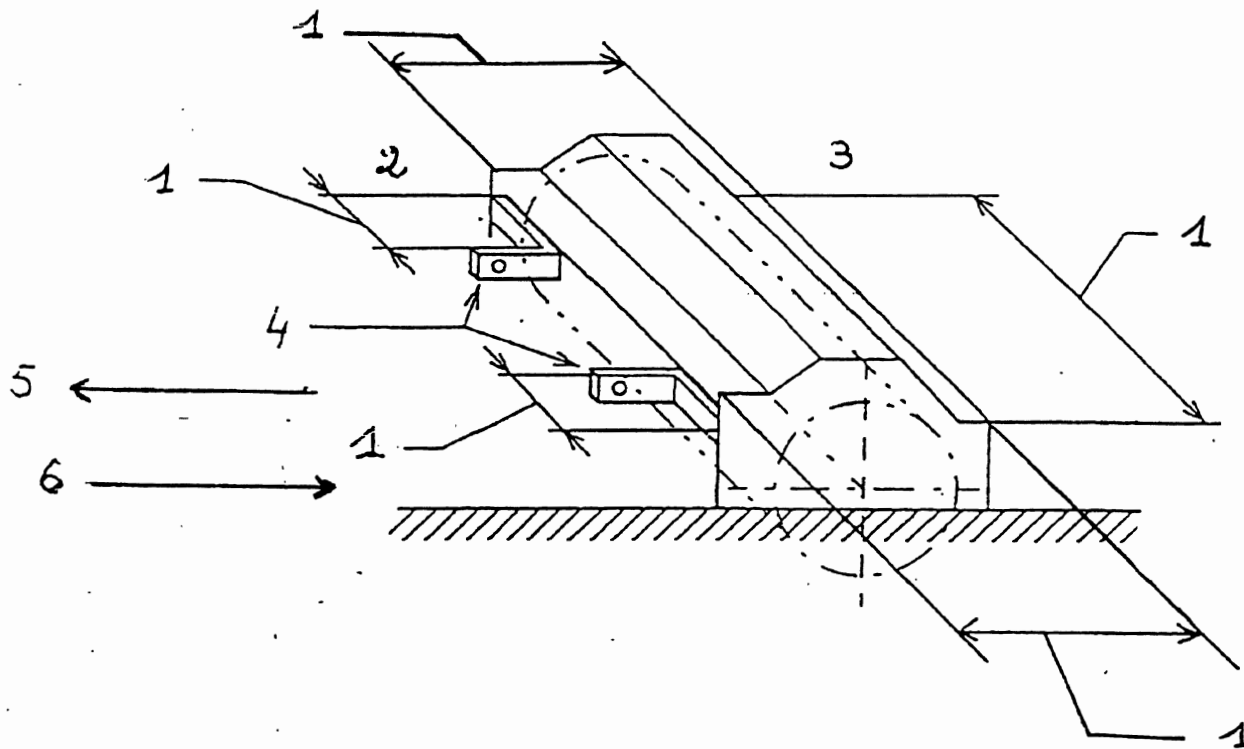
Add the following points:

- "m) the maximum power of the tractor;
- n) instructions on adjusting the controls needed to modify the working depth."

iTeh STANDARD PREVIEW
(standards.iteh.ai)

[SIST EN 708:1996/A1:2001](https://standards.iteh.ai/catalog/standards/sist/da049163-6f65-4b80-908a-05dd644031e4/sist-en-708-1996-a1-2001)
<https://standards.iteh.ai/catalog/standards/sist/da049163-6f65-4b80-908a-05dd644031e4/sist-en-708-1996-a1-2001>

Replace the figure 1 by the following:



- 1 – Accessible zone
- 2 – Front
- 3 – Rear
- 4 – Lower hitch points
- 5 – Forward direction
(rear mounted machine)
- 6 – Forward direction
(front mounted machine)

Figure 1 — Accessible zones

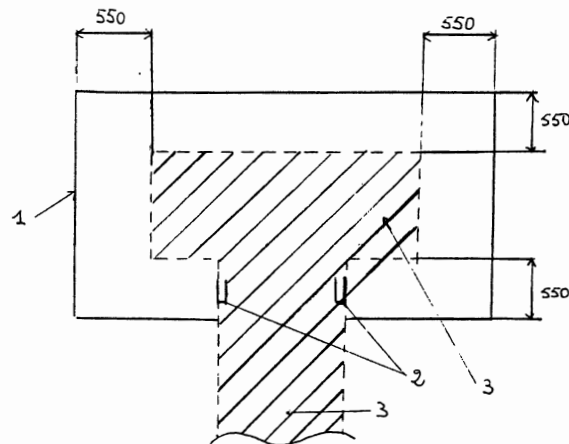
iTeh STANDARD PREVIEW
(standards.iteh.ai)

[SIST EN 708:1996/A1:2001](https://standards.iteh.ai/catalog/standards/sist/da049163-6f65-4b80-908a-05dd644031e4/sist-en-708-1996-a1-2001)

<https://standards.iteh.ai/catalog/standards/sist/da049163-6f65-4b80-908a-05dd644031e4/sist-en-708-1996-a1-2001>

Add the following figure 5 :

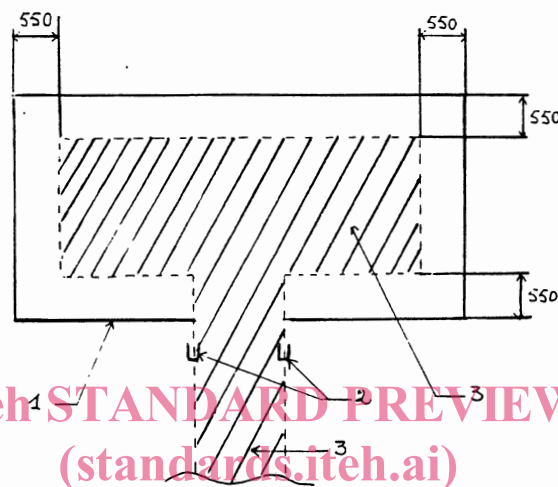
Dimensions in millimetres



- 1 – Outer limits of the machine
- 2 – Lower hitch points
- 3 – Area in which the manual controls for the adjustment of the working depth shall not be located

Figure 5 a

Dimensions in millimetres



<https://standards.iteh.ai/catalog/standards/sist/da049163-6f65-4b80-908a-05dd644031e4/sist-en-708-1996-a1-2001>

- 1 – Outer limits of the machine
- 2 – Lower hitch points
- 3 – Area in which the manual controls for the adjustment of the working depth shall not be located

Figure 5 b

Figure 5 — Area where the manual controls for the adjustment of the working depth shall not be located (top view)