

DRAFT INTERNATIONAL STANDARD

ISO/IEC DIS 30128

ISO/IEC JTC 1

Secretariat: ANSI

Voting begins on:
2013-11-25

Voting terminates on:
2014-02-25

Information technology — Sensor Networks — Generic Sensor Network Application Interface

Titre manque

ICS: 35.110

iTeh STANDARD PREVIEW
(standards.iteh.ai)
Full standard:
<https://standards.iteh.ai/catalog/standards/sist/3d8ef17-5532-4d38-92dc-499f8a80bfbf/iso-iec-30128-2014>

THIS DOCUMENT IS A DRAFT CIRCULATED FOR COMMENT AND APPROVAL. IT IS THEREFORE SUBJECT TO CHANGE AND MAY NOT BE REFERRED TO AS AN INTERNATIONAL STANDARD UNTIL PUBLISHED AS SUCH.

IN ADDITION TO THEIR EVALUATION AS BEING ACCEPTABLE FOR INDUSTRIAL, TECHNOLOGICAL, COMMERCIAL AND USER PURPOSES, DRAFT INTERNATIONAL STANDARDS MAY ON OCCASION HAVE TO BE CONSIDERED IN THE LIGHT OF THEIR POTENTIAL TO BECOME STANDARDS TO WHICH REFERENCE MAY BE MADE IN NATIONAL REGULATIONS.

RECIPIENTS OF THIS DRAFT ARE INVITED TO SUBMIT, WITH THEIR COMMENTS, NOTIFICATION OF ANY RELEVANT PATENT RIGHTS OF WHICH THEY ARE AWARE AND TO PROVIDE SUPPORTING DOCUMENTATION.



Reference number
ISO/IEC DIS 30128:2013(E)

© ISO/IEC 2013

iTeh STANDARD PREVIEW
(standards.iteh.ai)
Full standard:
<https://standards.iteh.ai/catalog/standards/sist/3d8ef17-5532-4d38-92dc-499f8a80bfbf/iso-iec-30128-2014>

Copyright notice

This ISO document is a Draft International Standard and is copyright-protected by ISO. Except as permitted under the applicable laws of the user's country, neither this ISO draft nor any extract from it may be reproduced, stored in a retrieval system or transmitted in any form or by any means, electronic, photocopying, recording or otherwise, without prior written permission being secured.

Requests for permission to reproduce should be addressed to either ISO at the address below or ISO's member body in the country of the requester.

ISO copyright office
Case postale 56 • CH-1211 Geneva 20
Tel. + 41 22 749 01 11
Fax + 41 22 749 09 47
E-mail copyright@iso.org
Web www.iso.org

Reproduction may be subject to royalty payments or a licensing agreement.

Violators may be prosecuted.

Contents

Page

Foreword	v
Introduction.....	vi
1 Scope.....	오류! 책갈피가 정의되어 있지 않습니다.
2 Normative references	1
3 Terms and definitions	1
3.1 actuator	1
3.2 application layer	1
3.3 authentication	1
3.4 authorization	2
3.5 continuous mode.....	2
3.6 event mode.....	2
3.7 identification	2
3.8 instant mode	2
3.9 onTime mode	2
3.10 personal area network	2
3.11 PAN coordinator	2
3.12 pull mode.....	2
3.13 push mode	2
3.14 sensor.....	3
3.15 sensor network.....	3
3.16 sensor network application.....	3
3.17 sensor network client.....	3
3.18 sensor network gateway.....	3
3.19 sensor network resource.....	3
3.20 sensor network service.....	3
3.21 transducer	3
3.22 user	3
4 Symbols (and abbreviated terms).....	3
5 Conventions.....	4
6 Overview of sensor network applications	4
6.1 Communication model.....	4
6.2 Sensor network client operations.....	6
6.2.1 Overview of sensor network client operations	6
6.2.2 Sensor manipulation	6
6.2.3 Actuator manipulation	9
6.2.4 Sensor network monitoring and controlling	10
7 Overview of sensor network capabilities.....	10
8 Security considerations.....	11
9 Data model of sensor data and metadata	11
10 Generic sensor network application interface specification	11
10.1 Overview of generic sensor network application interface	11
10.1.1 General	11
10.1.2 Base structure	14
10.1.3 Sensing types and measurement units.....	15
10.2 Mandatory operations.....	15
10.2.1 Registration.....	15
10.2.2 DeRegistration	19
10.2.3 Sensing value report.....	19

10.3	Optional operations.....	20
10.3.1	Instant command.....	20
10.3.2	Continuous command.....	22
10.3.3	Event command.....	23
10.3.4	Stop command.....	23
10.3.5	Actuation command.....	24
10.3.6	Monitoring command.....	26
10.3.7	Resource control.....	27
10.3.8	User-defined message.....	28
10.3.9	Reject notification.....	29
10.3.10	Nak notification.....	29
Annex A	31
Annex B	38
Bibliography	40

iTeh STANDARD PREVIEW
 (standards.iteh.ai)
 Full standard:
<https://standards.iteh.ai/catalog/standards/sist/13d8ef17-5532-4d38-92dc-499f8a80bfbf/iso-iec-30128-2014>

Foreword

ISO (the International Organization for Standardization) is a worldwide federation of national standards bodies (ISO member bodies). The work of preparing International Standards is normally carried out through ISO technical committees. Each member body interested in a subject for which a technical committee has been established has the right to be represented on that committee. International organizations, governmental and non-governmental, in liaison with ISO, also take part in the work. ISO collaborates closely with the International Electrotechnical Commission (IEC) on all matters of electrotechnical standardization.

International Standards are drafted in accordance with the rules given in the ISO/IEC Directives, Part 2.

The main task of technical committees is to prepare International Standards. Draft International Standards adopted by the technical committees are circulated to the member bodies for voting. Publication as an International Standard requires approval by at least 75 % of the member bodies casting a vote.

Attention is drawn to the possibility that some of the elements of this document may be the subject of patent rights. ISO shall not be held responsible for identifying any or all such patent rights.

ISO/IEC 30128 was prepared by Working Group ISO/IEC JTC 1/WG 7, Working Group on Sensor Network.

ITeH STANDARD PREVIEW
(standards.iteh.ai)
Full standard:
<https://standards.iteh.ai/catalog/standards/sist/1306017-5532-4d38-92dc-499f8a80bfbf/iso-iec-30128-2014>

Introduction

Sensor network is a key technology to enable building context aware smart environments for human beings, monitoring health status, cross-reality services, etc. But there are many different sensor network implementations and they are not interoperable. In general, sensor networks are developed according to the sensor network applications' requirements (in which ways sensor network applications use sensor networks) within sensor network hardware constraints.

When it comes to sensor network applications' requirements, they include transport-level requirements, sensor networks' hardware point of requirements, applications' operational requirements, etc. Of these requirements, applications' operational requirements affect sensor network implementations, even though each sensor network supports the same transport protocol and uses the same hardware specification. However, these applications' operational requirements can be generalized and can be used to derive standard application layer interfaces between sensor networks and sensor network service providers.

This international standard specifies generic sensor network application interfaces based on the generalized sensor network applications' operational requirements with consideration on sensor network hardware constraints.

ITeH STANDARD PREVIEW
(standards.iteh.ai)
Full standard:
<https://standards.iteh.ai/catalog/standards/sist/13d8e17-5532-4d38-92dc-499f8a80bfbf/iso-iec-30128-2014>

Information technology — Sensor Networks — Generic Sensor Network Application Interface

1 Scope

This international standard specifies the interfaces between the application layers of service providers and sensor network gateways, which is Protocol A in interface 3, defined in ISO/IEC 29182-5.

This international standard covers

- Description of generic sensor network applications' operational requirements
- Description of sensor network capabilities
- Mandatory and optional interfaces between the application layers of service providers and sensor network gateways

2 Normative references

The following referenced documents are indispensable for the application of this document. For dated references, only the edition cited applies. For undated references, the latest edition of the referenced document (including any amendments) applies.

ISO/IEC 29182-2:2013, *Information technology – Sensor Network: Sensor Network Reference Architecture (SNRA) – Part 2: Vocabulary/Terminology*

ISO/IEC 29182-5:2013, *Information technology – Sensor Network: Sensor Network Reference Architecture (SNRA) – Part 5: Interface definitions*

ISO/IEC 8824-1, *Information technology – Abstract Syntax Notation One (ASN.1): Specification of basic notation*

3 Terms and definitions

For the purposes of this document, the following terms and definitions apply:

3.1 actuator

[SOURCE: ISO/IEC 29182-2:2013, definition 2.1.1]

3.2 application layer

[SOURCE: ISO/IEC 29182-2:2013, definition 2.3.1.1]

3.3 authentication

[SOURCE: ISO/IEC 29182-2:2013, definition 2.6.1]

3.4 authorization

[SOURCE: ISO/IEC 29182-2:2013, definition 2.6.2]

3.5 continuous mode

sensor data query mode with duration value (d) and interval value (t)

3.6 event mode

sensor data query mode with event conditions. Sensor networks keep collecting sensor data and send them only, if the conditions are met

3.7 identification

[SOURCE: ISO/IEC 29182-2:2013, definition 2.7.2]

3.8 instant mode

sensor data query mode for an immediate one-time response from a sensor network

3.9 onTime mode

sensor data query mode with an action time

3.10 personal area network

[SOURCE: ISO/IEC 29182-2:2013, definition 2.1.4]

3.11 PAN coordinator

device which is responsible for formation and maintenance of a PAN

3.12 pull mode

sensor data delivery mode with an explicit sensor data query

3.13 push mode

sensor data delivery mode without any explicit sensor data query

NOTE push mode sensor data delivery may be triggered by an explicit start request and may be terminated by an explicit stop request. It is an implementation issue.

3.14 sensor

[SOURCE: ISO/IEC 29182-2:2013, definition 2.1.5]

3.15 sensor network

[SOURCE: ISO/IEC 29182-2:2013, definition 2.1.6]

3.16 sensor network application

[SOURCE: ISO/IEC 29182-2:2013, definition 2.2.2]

3.17 sensor network client

application software that uses information provided by a sensor network

3.18 sensor network gateway

[SOURCE: ISO/IEC 29182-2:2013, definition 2.1.7]

3.19 sensor network resource

entity related to a sensor network which may be a sensor network gateway, a PAN coordinator (if any), a sensor node or a transducer

3.20 sensor network service

[SOURCE: ISO/IEC 29182-2:2013, definition 2.2.3]

3.21 transducer

A device converting energy from one domain into another, calibrated to minimize the errors in the conversion process. It could be a sensor or an actuator

[IEEE Std 1451.1-1999]

3.22 user

[SOURCE: ISO/IEC 29182-2:2013, definition 2.8.5]

4 Symbols (and abbreviated terms)

This document uses the following abbreviations and acronyms:

DNS Domain Name System

O&M Observations and Measurements in SWE

PAN Personal Area Network

SensorML Sensor Model Language in SWE

SNC Sensor Network Client

SWE Sensor Web Enablement

TEDS Transducer Electronic Data Sheet

5 Conventions

In this part of ISO/IEC 30128:

The keyword “shall” be used to indicate requirements strictly to be followed in order to conform to the document and from which no deviation is permitted.

The keyword “should” be used to indicate that among several possibilities one is recommended as particularly suitable, without mentioning or excluding others, or that a certain course of action is preferred but not necessarily required, or that (in the negative form) a certain possibility or course of action is deprecated but not prohibited.

The keyword “may” be used to indicate a course of action permissible within the limits of the document.

The keyword “can” be used for statements of possibility and capability, whether material, physical or causal.

6 Overview of sensor network applications

6.1 Communication model

Sensor network applications provide sensor-associated or actuator-associated services for users by interacting with at least one sensor network. When it comes to sensor network service providers, they need to communicate with lots of different types of sensor networks to provide integrated services for users. On the other hand, sensor networks provide sensor network services to multiple sensor network service providers to maximize their benefits. In this context, the communication model between sensor network service providers and sensor networks can be summarized in two cases.

In one case, an interface is defined for a sensor network that provides sensor network services based on the interface. Then, sensor network service providers implement the interface defined for each sensor network to communicate with the sensor network. This case is illustrated in Figure 1. If there is no standard interface between sensor networks and sensor network service providers, sensor network service providers need to implement different interfaces to communicate with different sensor networks. In Figure 1, the sensor network service provider needs to implement interface A, interface B, and interface C altogether to provide integrated services for users. In view of that there are many different sensor network providers in the world, implementing all of these sensor network providers' interfaces is a tedious and time consuming process, and it is definitely not a good solution.

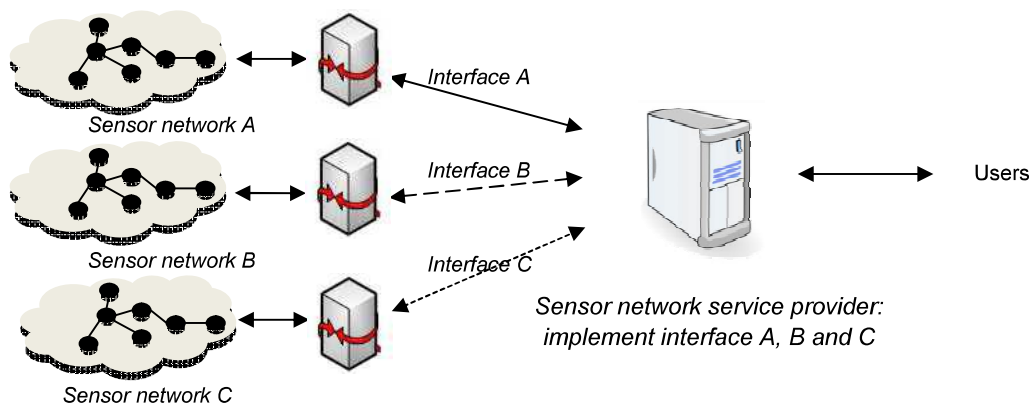


Figure 1 – Communication model: multiple sensor networks and one sensor network service provider

In the other case, each sensor network service provider defines its own interface. Thus, sensor networks need to implement each interface to communicate with the sensor network service provider. This case is illustrated in Figure 2. If there are multiple sensor network service providers with different interfaces, then sensor networks need to implement each interface provided by each sensor network service provider. From a sensor network providers' point of view, they need to develop a single sensor network that can implement all interfaces or they need to develop different sensor networks for different sensor network service providers to provide the same sensor network services. Both situations are not reasonable from the sensor network providers' perspective, because they increase sensor network development cost and time. As a consequence, this impedes the proliferation of sensor network usage.

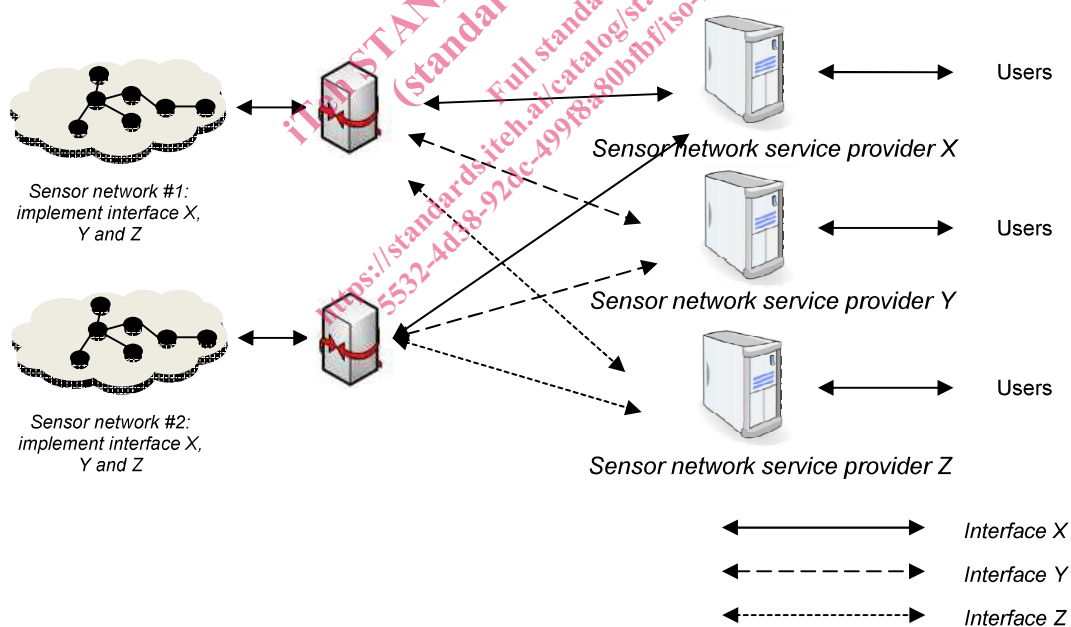


Figure 2 – Communication model: one sensor network and multiple sensor network service providers

In this regard, standard interface specification between sensor networks and sensor network service providers is very important. Moreover, the standard interface enables sensor network implementation free from specific sensor network applications' requirements, so it derives cost-effective mass production of sensor networks.

From this standard's point of view, the role of sensor network gateways is very important. A sensor network gateway is a front-end of a sensor network, in respect to sensor network service providers. Therefore, if a standard interface between sensor networks and sensor network service providers is defined, the interface will

reside between the sensor network gateway and the sensor network providers. In a case where a smart-device plays the role of a standalone sensor node without a separate sensor network gateway, therefore the smart-device may be regarded as a sensor network gateway and a sensor node at the same time.

Basically, a sensor network gateway translates sensor network service providers' messages into sensor networks' messages and vice versa. But in some cases, a sensor network gateway also needs to handle time synchronization to deliver sensor network clients' message to sensor nodes. That is because when a sensor network service provider sends a message to sensor nodes, the sensor nodes may be in a sleep mode for power saving. In this case, a sensor network gateway should know the life cycle of each sensor node in order to keep-and-forward messages to sensor nodes. Or, when a sensor node or a transducer registers itself to a sensor network service provider, a sensor network gateway may need to attach more information on the registration message from a sensor node to include hierarchical topology information. In general, if a gateway is implemented on a high performance machine, the gateway can perform complex operations on behalf of capability-constrained sensor nodes. In this regard, in some cases, a sensor network's computing capabilities means the sensor network gateways' capabilities. In summary, sensor network gateways play a very important role in sensor networks and they are different from other domain's gateways.

6.2 Sensor network client operations

6.2.1 Overview of sensor network client operations

There are various kinds of sensor network applications: logistics and supply chain management application, energy and utility distribution application, industrial production automation monitoring and controlling application, healthcare, medical application, etc.

These sensor network applications generally consume sensor data collected by sensor networks and some applications control appropriate actuators to handle observed situation. Other sensor network applications monitor the status of sensor networks and if necessary, they control the sensor networks corresponding to observed sensor networks' status. In this international standard, sensor network application operations are classified into three categories: sensor manipulation, actuator manipulation, and sensor network monitoring and controlling.

Regarding sensor manipulation, there are several ways to collect sensor data. Roughly, sensor network manipulation mode is classified into push mode and pull mode. And pull mode is further classified into instant mode, continuous mode, event mode, and onTime mode.

Regarding actuator manipulation, there may be various kinds of actuators: on/off actuator, text/image displaying actuator, multi-functional complex actuator, etc. All these actuators manipulation is performed by issuing action requests with appropriate parameters. After processing actuators, sensor networks shall respond with an appropriate action status.

Regarding sensor network monitoring and controlling, a sensor network client needs to know the current status of sensor networks and needs to control sensor networks according to the sensor network client's policy. In case of sensor network controlling, it may be triggered irrespective of monitoring process, or may follow after monitoring process. A sensor network client may issue a sensor network control request based on administrative purposes, or may issue a sensor network control request to manipulate monitoring results. Sensor network controlling may include several operations, such as reset, shutdown, and reconfiguration.

In this international standard, a sensor network client (SNC) is referred to as an application software residing in a sensor network service provider.

6.2.2 Sensor manipulation

6.2.2.1 Overview of sensor manipulation

There are various ways to collect sensor data from sensor networks. From the sensor networks' point of view, it provides collected sensor data in two ways. One way is pushing collected sensor data without any consideration on specific requests from sensor n is called a push mode. The other way is collecting sensor data and delivering sensor data according to specific requests from sensor network clients. This is called pull