



DRAFT INTERNATIONAL STANDARD ISO/DIS 13316

ISO/TC 162

Secretariat: JISC

Voting begins on
2012-12-10

Voting terminates on
2013-03-10

INTERNATIONAL ORGANIZATION FOR STANDARDIZATION • МЕЖДУНАРОДНАЯ ОРГАНИЗАЦИЯ ПО СТАНДАРТИЗАЦИИ • ORGANISATION INTERNATIONALE DE NORMALISATION

Terminology for doors and windows

Terminologie pour portes et fenêtres

(Revision of ISO 1804:1972)

ICS 01.040.91; 91.060.50

iTeh STANDARD PREVIEW (standards.iteh.ai)

[ISO/DIS 13316](https://standards.iteh.ai/catalog/standards/sist/1e9706cd-9afb-4f90-9faa-9857d2e30e9d/iso-dis-13316)

<https://standards.iteh.ai/catalog/standards/sist/1e9706cd-9afb-4f90-9faa-9857d2e30e9d/iso-dis-13316>

To expedite distribution, this document is circulated as received from the committee secretariat. ISO Central Secretariat work of editing and text composition will be undertaken at publication stage.

Pour accélérer la distribution, le présent document est distribué tel qu'il est parvenu du secrétariat du comité. Le travail de rédaction et de composition de texte sera effectué au Secrétariat central de l'ISO au stade de publication.

THIS DOCUMENT IS A DRAFT CIRCULATED FOR COMMENT AND APPROVAL. IT IS THEREFORE SUBJECT TO CHANGE AND MAY NOT BE REFERRED TO AS AN INTERNATIONAL STANDARD UNTIL PUBLISHED AS SUCH.

IN ADDITION TO THEIR EVALUATION AS BEING ACCEPTABLE FOR INDUSTRIAL, TECHNOLOGICAL, COMMERCIAL AND USER PURPOSES, DRAFT INTERNATIONAL STANDARDS MAY ON OCCASION HAVE TO BE CONSIDERED IN THE LIGHT OF THEIR POTENTIAL TO BECOME STANDARDS TO WHICH REFERENCE MAY BE MADE IN NATIONAL REGULATIONS.

RECIPIENTS OF THIS DRAFT ARE INVITED TO SUBMIT, WITH THEIR COMMENTS, NOTIFICATION OF ANY RELEVANT PATENT RIGHTS OF WHICH THEY ARE AWARE AND TO PROVIDE SUPPORTING DOCUMENTATION.

iTeh STANDARD PREVIEW (standards.iteh.ai)

ISO/DIS 13316

<https://standards.iteh.ai/catalog/standards/sist/1e9706cd-9afb-4f90-9faa-9857d2e30e9d/iso-dis-13316>

Copyright notice

This ISO document is a Draft International Standard and is copyright-protected by ISO. Except as permitted under the applicable laws of the user's country, neither this ISO draft nor any extract from it may be reproduced, stored in a retrieval system or transmitted in any form or by any means, electronic, photocopying, recording or otherwise, without prior written permission being secured.

Requests for permission to reproduce should be addressed to either ISO at the address below or ISO's member body in the country of the requester.

ISO copyright office
Case postale 56 • CH-1211 Geneva 20
Tel. + 41 22 749 01 11
Fax + 41 22 749 09 47
E-mail copyright@iso.org
Web www.iso.org

Reproduction may be subject to royalty payments or a licensing agreement.

Violators may be prosecuted.

Contents

	Page
Introduction	iii
1 Scope	1
2 Distinction between Doors and Windows	1
2.1 Doors	1
2.2 Windows	1
3 Terms and definitions	1
3.1 Terms common to doors and windows	1
3.2 Terms for doors	4
3.3 Terms for windows	5
4 Denominations of components (see Figures 3 and 4)	7
5 Type of doors and windows	8
5.1 Doors	8
5.2 Windows	13
6 Dimensions (see Figures 6 and 7)	22

ITeH STANDARD PREVIEW
(standards.iteh.ai)

ISO/DIS 13316

<https://standards.iteh.ai/catalog/standards/sist/1e9706cd-9afb-4f90-9faa-9857d2e30e9d/iso-dis-13316>

Foreword

ISO (the International Organization for Standardization) is a worldwide federation of national standards bodies (ISO member bodies). The work of preparing International Standards is normally carried out through ISO technical committees. Each member body interested in a subject for which a technical committee has been established has the right to be represented on that committee. International organizations, governmental and non-governmental, in liaison with ISO, also take part in the work. ISO collaborates closely with the International Electrotechnical Commission (IEC) on all matters of electrotechnical standardization.

International Standards are drafted in accordance with the rules given in the ISO/IEC Directives, Part 2.

The main task of technical committees is to prepare International Standards. Draft International Standards adopted by the technical committees are circulated to the member bodies for voting. Publication as an International Standard requires approval by at least 75 % of the member bodies casting a vote.

Attention is drawn to the possibility that some of the elements of this document may be the subject of patent rights. ISO shall not be held responsible for identifying any or all such patent rights.

iTeh STANDARD PREVIEW
(standards.iteh.ai)

ISO/DIS 13316

<https://standards.iteh.ai/catalog/standards/sist/1e9706cd-9afb-4f90-9faa-9857d2e30e9d/iso-dis-13316>

Introduction

This standard issue has been proposed and provided as consequence of review current ISO 1804: 1972 Doors and Windows - Terminology and some new terminology has been added.

Since terminology is basic communication of various reference standard, we have aimed to use terminology and name with language commonly and internationally popular for practical purpose of new standard.

Please notice and understand that contents of new standard has used explanation of terminology and perspective sketch of open-close function for easy understanding by all the members.

iTeh STANDARD PREVIEW
(standards.iteh.ai)

ISO/DIS 13316

<https://standards.iteh.ai/catalog/standards/sist/1e9706cd-9afb-4f90-9faa-9857d2e30e9d/iso-dis-13316>

iTeh STANDARD PREVIEW
(standards.iteh.ai)

[ISO/DIS 13316](#)

<https://standards.iteh.ai/catalog/standards/sist/1e9706cd-9afb-4f90-9faa-9857d2e30e9d/iso-dis-13316>

1 Scope

This international standard provides terms and definitions of doors and windows which are handled manually and installed in the opening mainly on the external wall of a building.

2 Distinction between Doors and Windows

2.1 Doors

building component for closing an opening in a wall that allows access and/or admit light when closed.

2.2 Windows

building component for closing an opening in a wall or pitched roof that may admit light and/or provide ventilation.

iTeh STANDARD PREVIEW

3 Terms and Definitions (standards.iteh.ai)

3.1 Terms common to doors and windows

<https://standards.iteh.ai/catalog/standards/sist/1e9706cd-9afb-4f90-9faa-9857d2e30e9d/iso-dis-13316>

3.1.1

active leaf

a leaf to be activated first in a door/window that has more than one leaf.

NOTE See Figure 5.1.4 ①

3.1.2

architrave

molding or trim around the frame of door or window.

NOTE See Figure 1 ①

3.1.3

closing face

surface of sash/door-leaf facing on to the closing direction

NOTE See Figure 5.1.5.1 ①

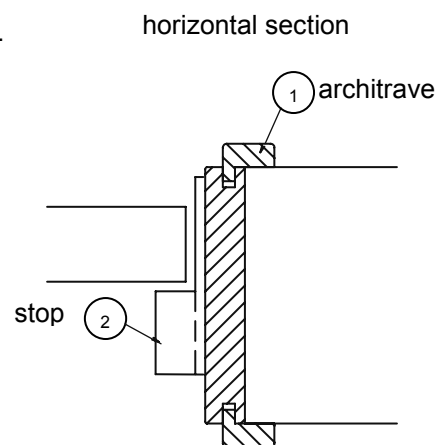


Figure 1

3.1.4

frame

member which composes the circumference of a door/window and is required to install it onto a structure

3.1.5

glazing bar

member subdividing infill into smaller panes

NOTE See Figure 4 ⑫

3.1.6

head

upper horizontal member of frame of door or window

NOTE See Figures 3 and 4 ⑬

3.1.7

inactive leaf (passive leaf)

a leaf of a door/window having more than one active leaf which gets activated following the active leaf

NOTE See Figure 5.1.4 ⑭ <https://standards.iteh.ai/catalog/standards/sist/1e9706cd-9afb-4f90-9faa-9857d2e30e9d/iso-dis-13316>

3.1.8

infill

panel members to be placed in the opening of a door/window including assembled complex materials

3.1.9

jamb

vertical side of a frame

NOTE See Figures 3 and 4 ⑮

3.1.10

clear opening

actual work-dimensions of the opening passable through the door or window

NOTE See Figures 6 and 7

3.1.11**opening face**

surface of the sash/door-leaf facing on to the opening direction

NOTE See Figure 5.1.5.1 ②

3.1.12**sill**

bottom member of a frame designed for drainage

NOTE See Figure 4 ⑩

3.1.13**stile**

vertical end members to compose a door-leaf, a window or a sash

NOTE See Figure 4 ⑧

3.1.14**stop**

bump built around the frame of door or window not for the door-leaf or sash to go beyond the closed position

NOTE See Figure 1 ②

3.1.15**transom**

horizontal member partitioned the upper window with the door or window underneath

NOTE See Figures 3 and 4 ③

3.1.16**top rail**

upper horizontal member of sash or door-leaf

NOTE See Figure 4 ⑦

iTeh STANDARD PREVIEW
(standards.iteh.ai)

ISO/DIS 13316

https://standards.iteh.ai/catalog/standards/sist/9857d2e30e9d/iso-dis-13316

3.1.17

bottom rail

bottom horizontal member of sash or door-leaf

NOTE See Figure 4 ⑨

3.2 Terms for doors

3.2.1

door assembly

a complete door unit including one or more door leaves, a frame and necessary hardware, which are supplied as components from more than one source

3.2.2

door frame

portion of a door assembly where a door leaf is to be installed

3.2.3

door leaf

portion of a door assembly or a door set that revolves or slides by means of hinges/pivots or rollers

<https://standards.iteh.ai/catalog/standards/sist/1e9706cd-9afb-4f90-9faa-9857d2e30e9d/iso-dis-13316>

3.2.4

door set

a complete door unit including one or more pre-assembled door leaves in a frame, with necessary hardware, supplied from one source

3.2.5

double action (swing) door

a door to be opened both outward and inward by means of hinges or pivots

NOTE See Figures 5.1.6 and 5.1.7

3.2.6

external door

a door that separates the exterior from the interior of a building

3.2.7**flush door leaf**

door leaf of flat and level finish generally across the surface

NOTE See Figure 5.1.1

3.2.8**infilled panelled/glazed door leaf**

door leaf from stiles and rails incorporated and integrated with glass or panel

NOTE See Figure 5.1.2

3.2.9**threshold**

bottom horizontal member of door-frame, in particular, the bottom sill of swing open passage door

NOTE See Figure 2 ③ and Figure 3 ⑥

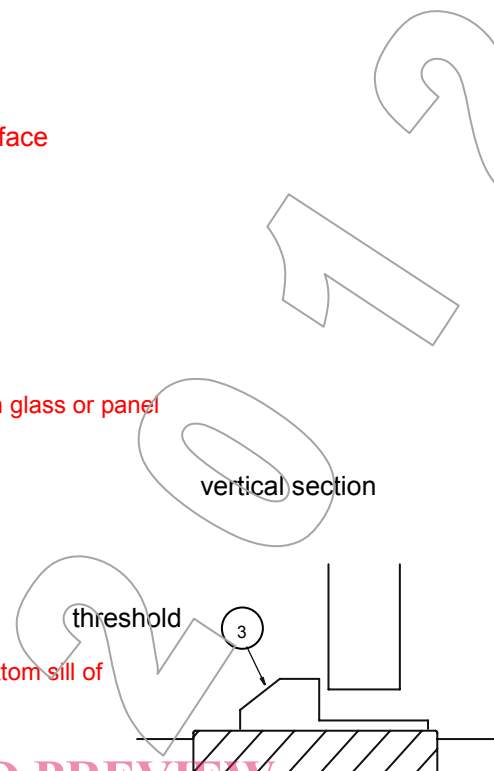


Figure 2

STANDARD PREVIEW
(standards.iteh.ai)

ISO/DIS 13316

<https://standards.iteh.ai/catalog/standards/sist/1e9706cd-9afb-4f90-9faa-9857d2e30e9d/iso-dis-13316>

3.3 Terms for windows**3.3.1****casement**

window element movable by means of hinges or pivots

3.3.2**casement door**

a door-sized window functioning as a passage

3.3.3**fanlight**

small window for lighting situated above the door or window

NOTE See Figure 3 ①