

---

---

**Rubber, vulcanized or thermoplastic —  
Determination of low-temperature  
brittleness**

*Caoutchouc vulcanisé ou thermoplastique — Détermination de la  
fragilité à basse température*

**iTeh STANDARD PREVIEW**  
**(standards.iteh.ai)**

ISO 812:2011

<https://standards.iteh.ai/catalog/standards/sist/00114875-bc02-4c6b-a3a2-ddf23ed61057/iso-812-2011>



## iTeh STANDARD PREVIEW (standards.iteh.ai)

ISO 812:2011

<https://standards.iteh.ai/catalog/standards/sist/00114875-bc02-4c6b-a3a2-ddf23ed61057/iso-812-2011>



### **COPYRIGHT PROTECTED DOCUMENT**

© ISO 2011

All rights reserved. Unless otherwise specified, no part of this publication may be reproduced or utilized in any form or by any means, electronic or mechanical, including photocopying and microfilm, without permission in writing from either ISO at the address below or ISO's member body in the country of the requester.

ISO copyright office  
Case postale 56 • CH-1211 Geneva 20  
Tel. + 41 22 749 01 11  
Fax + 41 22 749 09 47  
E-mail [copyright@iso.org](mailto:copyright@iso.org)  
Web [www.iso.org](http://www.iso.org)

Published in Switzerland

## Contents

Page

Foreword .....	iv
<b>1 Scope .....</b>	<b>1</b>
<b>2 Normative references .....</b>	<b>1</b>
<b>3 Terms and definitions .....</b>	<b>2</b>
<b>4 Apparatus and materials.....</b>	<b>2</b>
<b>5 Calibration .....</b>	<b>4</b>
<b>6 Test pieces .....</b>	<b>4</b>
<b>7 Time interval between manufacture and testing.....</b>	<b>4</b>
<b>8 Procedure .....</b>	<b>5</b>
<b>8.1 Procedure A (determination of brittleness temperature) .....</b>	<b>5</b>
<b>8.2 Procedure B (determination of 50 % brittleness temperature) .....</b>	<b>5</b>
<b>8.3 Procedure C (testing at a specified temperature) .....</b>	<b>6</b>
<b>9 Precision .....</b>	<b>7</b>
<b>10 Test report.....</b>	<b>7</b>
<b>Annex A (informative) Speed calibration of a solenoid-actuated low-temperature impact tester.....</b>	<b>8</b>
<b>Annex B (normative) Calibration schedule .....</b>	<b>11</b>
<b>Annex C (informative) Precision.....</b>	<b>13</b>

## Foreword

ISO (the International Organization for Standardization) is a worldwide federation of national standards bodies (ISO member bodies). The work of preparing International Standards is normally carried out through ISO technical committees. Each member body interested in a subject for which a technical committee has been established has the right to be represented on that committee. International organizations, governmental and non-governmental, in liaison with ISO, also take part in the work. ISO collaborates closely with the International Electrotechnical Commission (IEC) on all matters of electrotechnical standardization.

International Standards are drafted in accordance with the rules given in the ISO/IEC Directives, Part 2.

The main task of technical committees is to prepare International Standards. Draft International Standards adopted by the technical committees are circulated to the member bodies for voting. Publication as an International Standard requires approval by at least 75 % of the member bodies casting a vote.

Attention is drawn to the possibility that some of the elements of this document may be the subject of patent rights. ISO shall not be held responsible for identifying any or all such patent rights.

ISO 812 was prepared by Technical Committee ISO/TC 45, *Rubber and rubber products*, Subcommittee SC 2, *Testing and analysis*.

This third edition cancels and replaces the second edition (ISO 812:2006), which has been technically revised mainly to include an annex (Annex B) specifying a calibration schedule for the apparatus used.

**iTeh STANDARD PREVIEW**  
(standards.iteh.ai)  
ISO 812:2011  
<https://standards.iteh.ai/catalog/standards/sist/00114875-bc02-4c6b-a3a2-ddf23ed61057/iso-812-2011>

# Rubber, vulcanized or thermoplastic — Determination of low-temperature brittleness

**WARNING** — Persons using this International Standard should be familiar with normal laboratory practice. This standard does not purport to address all of the safety problems, if any, associated with its use. It is the responsibility of the user to establish appropriate safety and health practices and to ensure compliance with any national regulatory conditions.

**IMPORTANT** — Certain procedures specified in this International Standard might involve the use or generation of substances, or the generation of waste, that could constitute a local environmental hazard. Reference should be made to appropriate documentation on safe handling and disposal after use.

## 1 Scope

This International Standard specifies a method for determining the lowest temperature at which rubber materials do not exhibit brittle failure or the temperature at which half of the test pieces used in a test fail when impacted under specified conditions.

The temperatures thus determined do not necessarily relate to the lowest temperature at which the material can be used since the brittleness will be affected by the conditions of test and especially by the rate of impact. Data obtained by this method should, therefore, be used to predict the behaviour of rubbers at low temperatures only in applications in which the conditions of deformation are similar to those specified in the test.

Three procedures are described:

- procedure A, in which the brittleness temperature is determined;
- procedure B, in which the brittleness temperature for 50 % failure is determined;
- procedure C, in which the test piece is impacted at a specified temperature.

Procedure C is used in the classification of rubber materials and for specification purposes.

**NOTE** A similar test for rubber-coated fabrics is described in ISO 4646, *Rubber- or plastics-coated fabrics — Low-temperature impact test*.

## 2 Normative references

The following referenced documents are indispensable for the application of this document. For dated references, only the edition cited applies. For undated references, the latest edition of the referenced document (including any amendments) applies.

ISO 18899:2004, *Rubber — Guide to the calibration of test equipment*

ISO 23529, *Rubber — General procedures for preparing and conditioning test pieces for physical test methods*

### 3 Terms and definitions

For the purposes of this document, the following terms and definitions apply.

**3.1  
brittleness temperature**  
lowest temperature at which none of a set of test pieces fractures due to low-temperature embrittlement when tested under the specified conditions

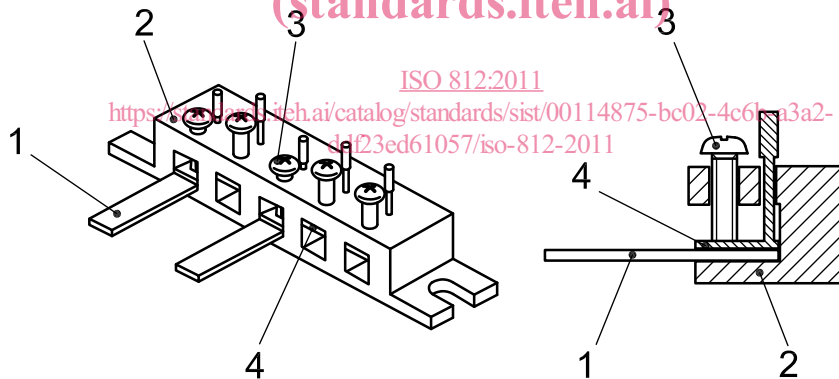
**3.2  
50 % brittleness temperature**  
temperature at which 50 % of a set of test pieces fracture due to low-temperature embrittlement when tested under the specified conditions

**3.3  
testing speed**  
relative linear velocity at impact between the striking edge of the test apparatus and a clamped test piece

### 4 Apparatus and materials

**4.1 Test piece clamp and striker**, meeting the requirements of 4.1.1 to 4.1.3.

**4.1.1** The test piece clamp shall be rigid and designed to hold the test piece(s) as cantilever beam(s). Each individual test piece shall be held firmly and securely in the clamp without distortion. A suitable example of a clamp is shown in Figure 1.



- Key**
- 1 test piece
  - 2 body of clamp
  - 3 holding screw
  - 4 test piece holder

**Figure 1 — Example of test piece clamp**

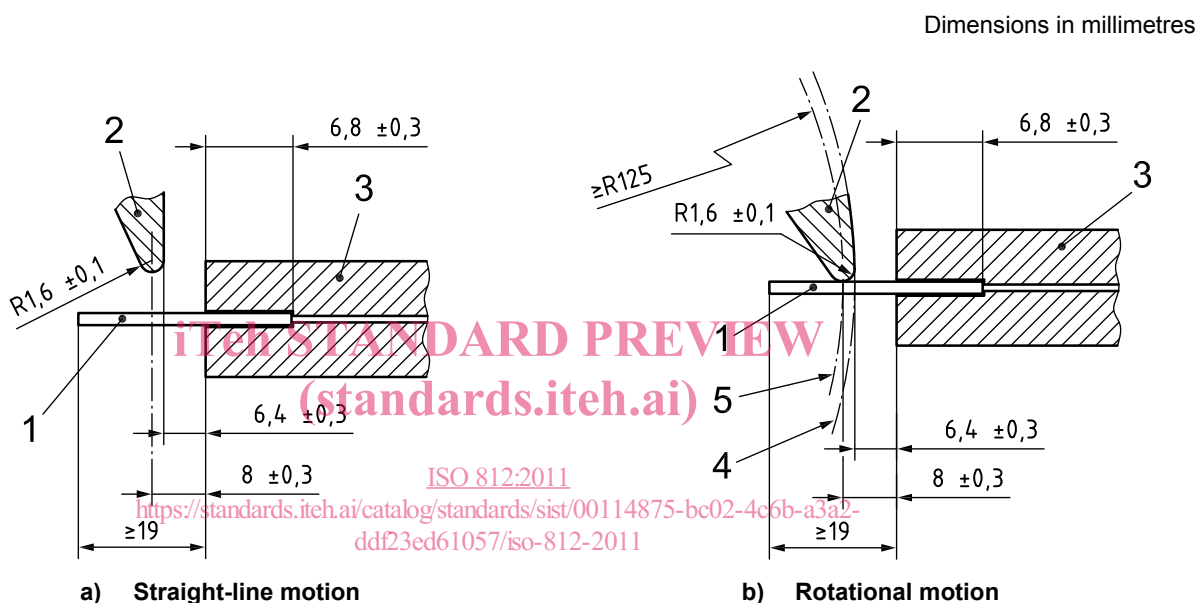
**4.1.2** The striking edge shall move relative to the test piece(s) along a path normal to the upper surface of the test piece(s) at a linear testing speed of  $2,0 \text{ m/s} \pm 0,2 \text{ m/s}$  at impact. The speed shall be maintained within this range for at least 6 mm of travel following the impact.

In order to obtain a speed within the specified limits during and after impact, care shall be taken to ensure that the striking energy is sufficient. It has been found that a striking energy of at least 3,0 J per test piece is necessary. It might, therefore, be necessary to limit the number of test pieces impacted at one time.

**4.1.3** The principal dimensions of the apparatus [see Figures 2a) and 2b)] shall be as follows:

- the striking edge shall have a radius of  $1,6 \text{ mm} \pm 0,1 \text{ mm}$ ;
- the clearance between the striker and the test piece clamp at impact shall be  $6,4 \text{ mm} \pm 0,3 \text{ mm}$ ;
- the separation between the point of impact of the striking edge and the test piece clamp shall be  $8 \text{ mm} \pm 0,3 \text{ mm}$ ;
- the clamping length of the test piece clamp shall be  $6,8 \text{ mm} \pm 0,3 \text{ mm}$ .

**NOTE** Commercial apparatus is available meeting the requirements of this International Standard in which the striking edge is rotated by a motor, or travels in a straight line under the action of a solenoid, gravity or a spring. A method for the speed calibration of a solenoid-actuated low-temperature impact tester is given in Annex A.



**Key**

- test piece
- striker
- test piece clamp
- locus described by point on striker closest to test piece clamp
- locus described by impact point on striker

**Figure 2 — Test piece clamp and striker**

**4.2 Heat-transfer medium**, liquid or gaseous, which remains fluid at the test temperature and which does not appreciably affect the material being tested, as prescribed in ISO 23529.

Gases can be employed as the heat-transfer medium provided the design of the apparatus is such that results obtained using them will duplicate those obtained with liquids.

The following fluids have been used satisfactorily:

- for temperatures down to  $-60 \text{ }^\circ\text{C}$ , silicone fluids of kinematic viscosity of about  $5 \text{ mm}^2/\text{s}$  at ambient temperature, which are usually suitable owing to their chemical inertness towards rubbers, their non-flammability and their non-toxicity;
- for temperatures down to  $-73 \text{ }^\circ\text{C}$ , ethanol;
- for temperatures down to  $-120 \text{ }^\circ\text{C}$ , methylcyclohexane cooled by liquid nitrogen (found to be satisfactory with the use of suitable apparatus).

**4.3 Temperature-measuring device**, capable of measuring the temperature to within 0,5 °C over the whole range of temperatures over which the apparatus is to be used.

The temperature sensor shall be positioned near the test pieces.

**4.4 Temperature control**, capable of maintaining the temperature of the heat-transfer medium to within  $\pm 1$  °C.

**4.5 Container for the heat-transfer medium**: A bath for a liquid medium or a test chamber for a gaseous medium, with means of heating the heat-transfer medium.

**4.6 Means of agitating the heat-transfer medium**: A stirrer for liquids, or a fan or blower for gases, which ensures thorough circulation of the heat-transfer medium. It is important that the stirrer also moves the liquid vertically to ensure a uniform temperature in the liquid.

**4.7 Stopwatch or other timing device**, calibrated in seconds.

## 5 Calibration

The test apparatus shall be calibrated in accordance with the schedule given in Annex B.

## 6 Test pieces

Test pieces shall be

- either type A: a strip 26 mm to 40 mm long, 6 mm  $\pm$  1 mm wide and 2,0 mm  $\pm$  0,2 mm thick;
- or type B: a test piece 2,0 mm  $\pm$  0,2 mm thick and of the shape and dimensions given in Figure 3.

Test pieces shall be prepared in accordance with ISO 23529. They shall normally be punched from sheet using a suitable sharp die. Alternatively, type A test pieces can be prepared using sharp, parallel double-bladed cutters, in a single stroke. The strip so formed is then cut to the correct length.

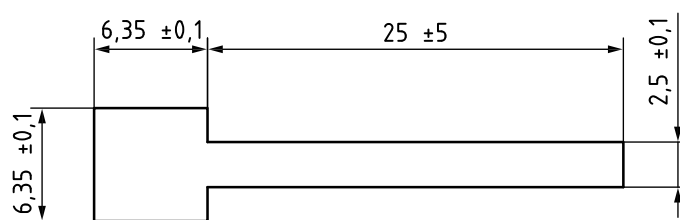


Figure 3 — Type B test piece

Dimensions in millimetres

## 7 Time interval between manufacture and testing

Unless otherwise specified, the time interval between the date the material was formed and testing shall be in accordance with ISO 23529.



## 8 Procedure

### 8.1 Procedure A (determination of brittleness temperature)

**8.1.1** Bring the bath or test chamber to a temperature below the expected lowest temperature of non-failure. In the case of a liquid heat-transfer medium, place sufficient liquid in the bath to ensure approximately 25 mm depth or more of the liquid over the test piece(s). Pre-cool the test piece clamp by immersing it in the cooled bath or test chamber.

**8.1.2** Quickly mount the test piece(s) in the test piece clamp and immerse them for 5 min at the test temperature when using a liquid medium or for 10 min when using a gaseous medium (see also ISO 23529).

NOTE 1 For very soft materials, it might be necessary to use a device to support the test piece horizontally until just before the striker is released.

The free length of the test piece(s) shall be greater than 19 mm.

Test five type A or type B test pieces. If the available striking energy has the minimum value specified in 4.1.2, they may all be tested at the same time.

Proper tightening of the clamp is of the utmost importance. The clamp shall be tightened so that each test piece is held with approximately the same clamping torque.

NOTE 2 It has been reported that the temperature at which a test piece fails might be affected by the clamping torque. Clamping to a torque of 0,15 N·m to 0,25 N·m is suggested.

**8.1.3** After immersion for the specified time at the test temperature, record the temperature and deliver a single impact blow to the test piece(s).

**8.1.4** Remove the test pieces from the test piece clamp and allow them to reach standard laboratory temperature. Examine each test piece to determine whether or not it has failed. Failure is defined as any crack, fissure or hole visible to the naked eye, or complete separation into two or more pieces. Where a test piece has not completely separated, bend it to an angle of 90° in the same direction as the bend caused by the impact. Then examine it for cracks at the bend.

**8.1.5** Repeat the test at each of a series of successively higher temperatures 10 °C apart, using a new set of test pieces at each temperature, until no failure is obtained. Then decrease the temperature to the highest value at which a failure was observed and carry out tests at temperatures increasing at 2 °C intervals to determine the temperature at which no failure is observed. Record this as the brittleness temperature.

If crystallization or time-dependent effects of plasticizers are to be studied, longer conditioning periods in a gaseous medium may be used.

### 8.2 Procedure B (determination of 50 % brittleness temperature)

**8.2.1** Carry out the procedure described in 8.1.1 to 8.1.4, except that the starting temperature is that at which 50 % failure is expected.

**8.2.2** If all of the test pieces fail at the starting temperature, increase the temperature by 10 °C and repeat the test. If none of the test pieces fail at the starting temperature, decrease the temperature by 10 °C and repeat the test. Increase or decrease the temperature in increments of 2 °C and repeat the test until the lowest temperature at which none of the test pieces fails and the highest temperature at which all of the test pieces fail is determined. Record the number of failures at each temperature. Use a new set of test pieces at each temperature. Determine the 50 % brittleness temperature by calculation using the equation in 8.2.3 or by the graphical method described in 8.2.4.

**8.2.3 Calculation:** From the number of failures at each temperature, calculate the percentage of failures at each temperature to determine the 50 % brittleness temperature from the following equation:

$$T_b = T_h + \Delta T \left( \frac{S}{100} - \frac{1}{2} \right)$$

where

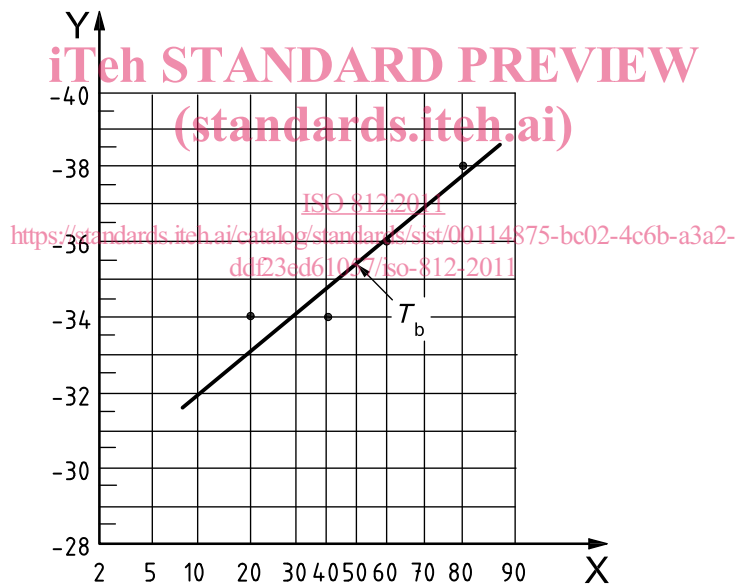
$T_b$  is the 50 % brittleness temperature (°C);

$T_h$  is the highest temperature at which all test pieces fail (°C);

$\Delta T$  is the interval between the test temperatures (°C);

$S$  is the total of the percentages of failures at each temperature, from the temperature at which no test piece fails to the temperature at which they all fail,  $T_h$  (%).

**8.2.4 Graphical method:** From the number of failures at each temperature, calculate the percentage of failures at each temperature. Next, using normal probability paper as shown in Figure 4, plot these percentages against the temperature, taking the temperature on the linear scale and the percentage of failures on the probability scale, and draw the best-fit straight line through the points. The temperature at the point of intersection of this line and the 50 % probability line is  $T_b$ , the 50 % brittleness temperature.



**Key**

X percentage of failures (%)

Y temperature (°C)

**Figure 4 — Determination of 50 % brittleness temperature,  $T_b$ , by the graphical method**

**8.3 Procedure C (testing at a specified temperature)**

**8.3.1** Carry out the procedure described in 8.1.1 to 8.1.4, except that the temperature used is that specified in the material specification or material classification.

**8.3.2** Report the material as satisfactory if no failure is observed in any one of the test pieces, or unsatisfactory if any test pieces have failed.

## 9 Precision

See Annex C.

## 10 Test report

The test report shall include the following information:

- a) sample details:
  - 1) a full description of the sample and its origin,
  - 2) the method of preparation of the test pieces from the sample, for example moulded or cut;
- b) test method:
  - 1) a reference to the test method used, i.e. the number of this International Standard,
  - 2) whether procedure A, B or C was used,
  - 3) the type of test piece used;
- c) test details:
  - 1) the heat-transfer medium and type of test equipment used,
  - 2) the laboratory temperature,
  - 3) the time and temperature of conditioning prior to test,
  - 4) the temperature(s) of test,
  - 5) details of any procedures not specified in this International Standard;
- d) test results:
  - 1) the number of test pieces used, and the number impacted at each impact,
  - 2) in the case of procedure A or B, the brittleness temperature or 50 % brittleness temperature, respectively,
  - 3) in the case of procedure C, whether or not the material was satisfactory;
- e) the date of the test.