



SLOVENSKI STANDARD
SIST ISO 7210:2014

01-januar-2014

Nadomešča:
SIST ISO 7210:1998

Rutinski analizni cigaretni dimni stroj - Dodatne preskusne metode za strojno preverjanje

Routine analytical cigarette-smoking machine - Additional test methods for machine verification

iTeh STANDARD PREVIEW
(standards.iteh.ai)

Machine à fumer analytique de routine pour cigarettes -- Méthodes d'essais complémentaires pour la vérification de la machine

<https://standards.iteh.ai/catalog/standards/sist/432e60dc-2073-48bb-b673-d9a782284517/sist-iso-7210-2014>

Ta slovenski standard je istoveten z: ISO 7210:2013

ICS:

65.160

Tobak, tobačni izdelki in oprema

Tobacco, tobacco products and related equipment

SIST ISO 7210:2014

en,fr

iTeh STANDARD PREVIEW
(standards.iteh.ai)

SIST ISO 7210:2014

<https://standards.iteh.ai/catalog/standards/sist/432e60dc-2073-48bb-b673-d9a782284517/sist-iso-7210-2014>

INTERNATIONAL
STANDARD

ISO
7210

Third edition
2013-01-15

**Routine analytical cigarette-smoking
machine — Additional test methods
for machine verification**

*Machine à fumer analytique de routine pour cigarettes — Méthodes
d'essais complémentaires pour la vérification de la machine*

iTeh STANDARD PREVIEW
(standards.iteh.ai)

[SIST ISO 7210:2014](https://standards.iteh.ai/catalog/standards/sist/432e60dc-2073-48bb-b673-d9a782284517/sist-iso-7210-2014)

[https://standards.iteh.ai/catalog/standards/sist/432e60dc-2073-48bb-b673-
d9a782284517/sist-iso-7210-2014](https://standards.iteh.ai/catalog/standards/sist/432e60dc-2073-48bb-b673-d9a782284517/sist-iso-7210-2014)



Reference number
ISO 7210:2013(E)

© ISO 2013

iTeh STANDARD PREVIEW
(standards.iteh.ai)

SIST ISO 7210:2014

<https://standards.iteh.ai/catalog/standards/sist/432e60dc-2073-48bb-b673-d9a782284517/sist-iso-7210-2014>



COPYRIGHT PROTECTED DOCUMENT

© ISO 2013

All rights reserved. Unless otherwise specified, no part of this publication may be reproduced or utilized otherwise in any form or by any means, electronic or mechanical, including photocopying, or posting on the internet or an intranet, without prior written permission. Permission can be requested from either ISO at the address below or ISO's member body in the country of the requester.

ISO copyright office
Case postale 56 • CH-1211 Geneva 20
Tel. + 41 22 749 01 11
Fax + 41 22 749 09 47
E-mail copyright@iso.org
Web www.iso.org

Published in Switzerland

Contents

Page

Foreword.....	iv
1 Scope.....	1
2 Normative references.....	1
3 Terms and definitions.....	1
4 Determination of pressure drop.....	2
4.1 Principle.....	2
4.2 Apparatus.....	2
4.3 Test atmosphere.....	3
4.4 Procedure.....	3
4.5 Expression of results.....	4
5 Determination of significant puff profile parameters.....	4
5.1 Principle.....	4
5.2 Apparatus.....	4
6 Verification of restricted smoking.....	6
6.1 Principle.....	6
6.2 Apparatus.....	6
6.3 Procedure.....	6
6.4 Expression of results.....	7

iTeh STANDARD PREVIEW
(standards.iteh.ai)

SIST ISO 7210:2014

<https://standards.iteh.ai/catalog/standards/sist/432e60dc-2073-48bb-b673-d9a782284517/sist-iso-7210-2014>

ISO 7210:2013(E)**Foreword**

ISO (the International Organization for Standardization) is a worldwide federation of national standards bodies (ISO member bodies). The work of preparing International Standards is normally carried out through ISO technical committees. Each member body interested in a subject for which a technical committee has been established has the right to be represented on that committee. International organizations, governmental and non-governmental, in liaison with ISO, also take part in the work. ISO collaborates closely with the International Electrotechnical Commission (IEC) on all matters of electrotechnical standardization.

International Standards are drafted in accordance with the rules given in the ISO/IEC Directives, Part 2.

The main task of technical committees is to prepare International Standards. Draft International Standards adopted by the technical committees are circulated to the member bodies for voting. Publication as an International Standard requires approval by at least 75 % of the member bodies casting a vote.

Attention is drawn to the possibility that some of the elements of this document may be the subject of patent rights. ISO shall not be held responsible for identifying any or all such patent rights.

ISO 7210 was prepared by Technical Committee ISO/TC 126, *Tobacco and tobacco products*, Subcommittee SC 1, *Physical and dimensional tests*.

This third edition cancels and replaces the second edition (ISO 7210:1997), which has been technically revised.

iTeh STANDARD PREVIEW
(standards.iteh.ai)

SIST ISO 7210:2014

<https://standards.iteh.ai/catalog/standards/sist/432e60dc-2073-48bb-b673-d9a782284517/sist-iso-7210-2014>

Routine analytical cigarette-smoking machine — Additional test methods for machine verification

1 Scope

This International Standard specifies additional test methods for routine analytical cigarette-smoking machines intended to check the conformity of these machines with ISO 3308:2012, Clause 4.

It only establishes additional test methods for smoking machines and does not deal with actual smoking, which is described in other International Standards.

It is composed of three sections relating to:

- the determination of pressure drop ([Clause 4](#));
- the determination of significant puff profile parameters ([Clause 5](#));
- the verification of restricted smoking ([Clause 6](#)).

NOTE There are more possibilities to determine the aforementioned parameters. Systems giving the same results and accuracies can be used. The certificate of compliance with this International Standard may be obtained from machine manufacturer. The frequency to carry out these additional test methods for smoking machines' verification is not part of the scope of this International Standard.

2 Normative references

The following referenced documents are indispensable for the application of this document. For dated references, only the edition cited applies. For undated references, the latest edition of the referenced document (including any amendments) applies.

ISO 3308:2012, *Routine analytical cigarette-smoking machine — Definitions and standard conditions*

ISO 3402, *Tobacco and tobacco products — Atmosphere for conditioning and testing*

3 Terms and definitions

For the purposes of this International Standard, the following terms and definitions apply.

3.1

pressure drop

static pressure difference between the two ends of a pneumatic circuit (of a smoking machine) when it is traversed by an air flow under steady conditions in which the measured volumetric flow, under standard conditions, at the output end is 17,5 ml/s.

3.2

puff profile

flow rate measured directly behind the butt end of the cigarette, and depicted graphically as a function of time

Note 1 to entry: For the determination of the puff profile, the cigarette could be replaced by a suitable device with a known pressure drop similar to the pressure drop of the cigarette.

3.3

restricted smoking

condition that exists when the butt end of a cigarette is closed to the atmosphere between successive puffs

ISO 7210:2013(E)

3.4

puff duration

interval of time during which the port of a smoking machine is connected to the suction mechanism

3.5

puff volume

volume leaving the butt end of a cigarette and passing through the smoke trap of a smoking machine

3.6

smoulder stream smoke

all smoke which leaves the butt end of the cigarette during the interval of time between successive puffs

3.7

port

aperture of the suction mechanism through which a puff is drawn and to which is attached a smoke trap

3.8

channel

element of a smoking machine consisting of one or more cigarette holders, one trap and a means of drawing a puff through the trap

4 Determination of pressure drop

4.1 Principle

Measurement, under well-specified air flow conditions, of the pressure drop of a smoking machine by means of an appropriate manometer. (standards.iteh.ai)

iTeh STANDARD PREVIEW

4.2 Apparatus

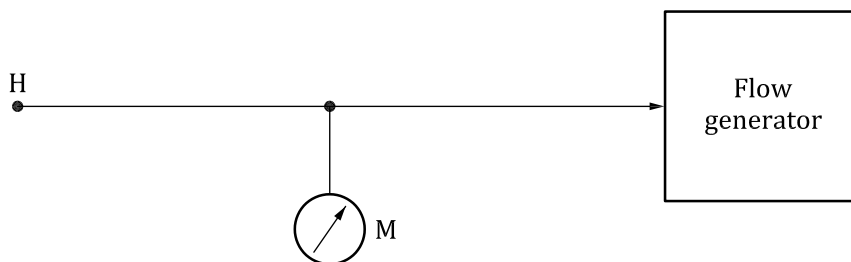
SIST ISO 7210:2014

<https://standards.iteh.ai/catalog/standards/sist/432e60dc-2073-48bb-b673->

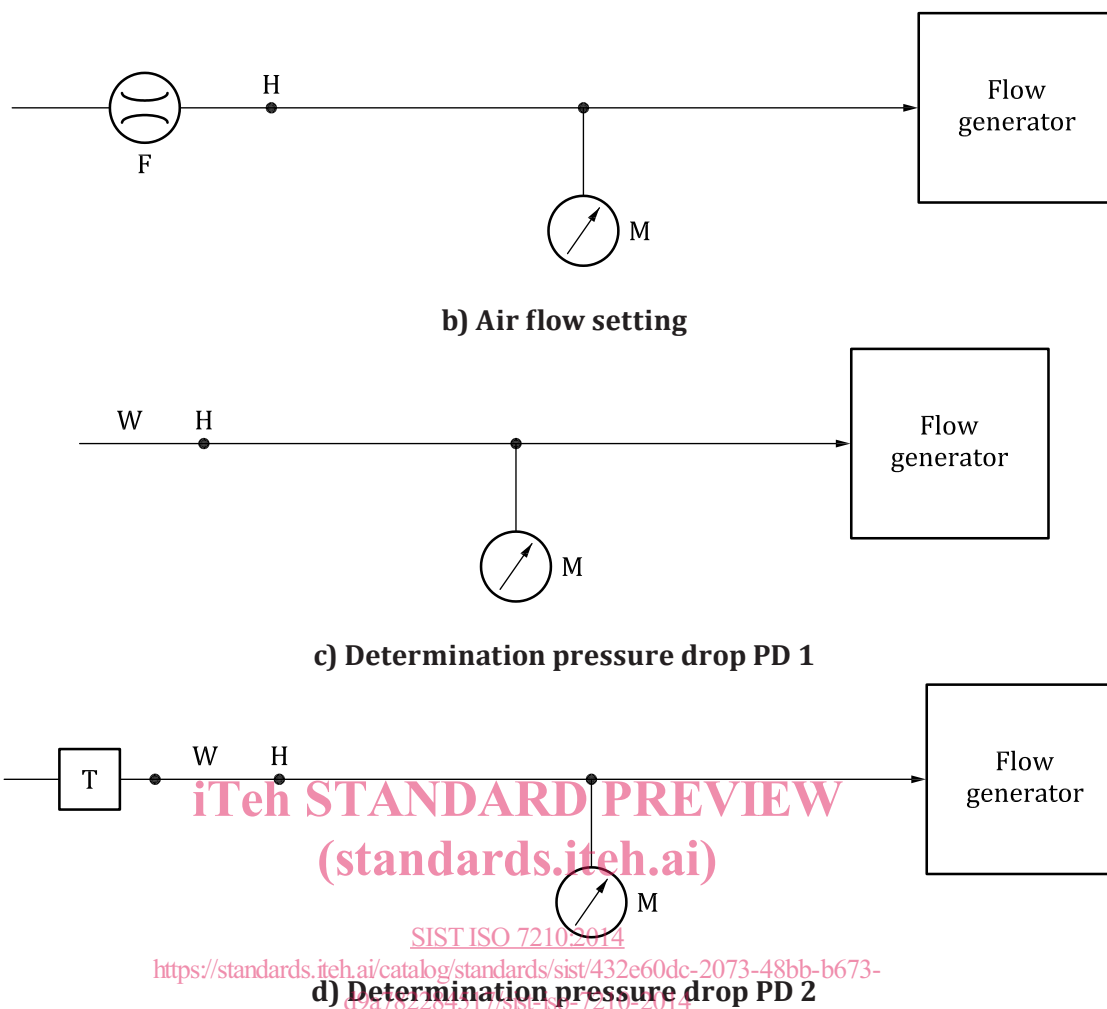
The whole of the flow path between the butt end of the cigarette and the suction mechanism shall offer the least possible resistance and its pressure drop shall not exceed 300 Pa.

The test apparatus shall be capable of:

- sucking a constant flow of air which is unaffected by the pressure drop of the system under test;
- measuring the pressure drop with known and sufficient accuracy.



a) Zero setting manometer

**Key**

- H test head point
- F flowmeter
- W wide-bore tubing
- T smoking machine under test
- M manometer

Figure 1 — Pneumatic circuit of a typical apparatus

NOTE Arrows indicate the direction of air flow.

4.3 Test atmosphere

All measurements shall be carried out under standard ambient conditions of temperature and relative humidity as specified in ISO 3402.

4.4 Procedure

4.4.1 General

The flow of air through the smoking machine shall always be in the same direction as during the puffing cycle, i.e. from the cigarette to the suction source. The air used for measurement shall be from the test atmosphere.