
**Monolithic refractory products —
Determination of resistance to
explosive spalling**

*Produits réfractaires monolithiques — Détermination de la résistance
à l'écaillage par explosion*

iTeh STANDARD PREVIEW
(standards.iteh.ai)

[ISO 16334:2013](https://standards.iteh.ai/catalog/standards/sist/88ebd6e8-acc3-4098-9385-a53b47c55521/iso-16334-2013)

[https://standards.iteh.ai/catalog/standards/sist/88ebd6e8-acc3-4098-9385-
a53b47c55521/iso-16334-2013](https://standards.iteh.ai/catalog/standards/sist/88ebd6e8-acc3-4098-9385-a53b47c55521/iso-16334-2013)



iTeh STANDARD PREVIEW
(standards.iteh.ai)

ISO 16334:2013

<https://standards.iteh.ai/catalog/standards/sist/88ebd6e8-acc3-4098-9385-a53b47c55521/iso-16334-2013>



COPYRIGHT PROTECTED DOCUMENT

© ISO 2013

All rights reserved. Unless otherwise specified, no part of this publication may be reproduced or utilized otherwise in any form or by any means, electronic or mechanical, including photocopying, or posting on the internet or an intranet, without prior written permission. Permission can be requested from either ISO at the address below or ISO's member body in the country of the requester.

ISO copyright office
Case postale 56 • CH-1211 Geneva 20
Tel. + 41 22 749 01 11
Fax + 41 22 749 09 47
E-mail copyright@iso.org
Web www.iso.org

Published in Switzerland

Contents

	Page
Foreword	iv
1 Scope	1
2 Normative references	1
3 Terms and definitions	1
4 Principle	1
5 Apparatus	1
6 Test specimens	2
7 Procedure	2
8 Test report	3
Annex A (informative) Method for determining the transition-point temperature	4

iTeh STANDARD PREVIEW (standards.iteh.ai)

[ISO 16334:2013](https://standards.iteh.ai/catalog/standards/sist/88ebd6e8-acc3-4098-9385-a53b47c55521/iso-16334-2013)

<https://standards.iteh.ai/catalog/standards/sist/88ebd6e8-acc3-4098-9385-a53b47c55521/iso-16334-2013>

Foreword

ISO (the International Organization for Standardization) is a worldwide federation of national standards bodies (ISO member bodies). The work of preparing International Standards is normally carried out through ISO technical committees. Each member body interested in a subject for which a technical committee has been established has the right to be represented on that committee. International organizations, governmental and non-governmental, in liaison with ISO, also take part in the work. ISO collaborates closely with the International Electrotechnical Commission (IEC) on all matters of electrotechnical standardization.

The procedures used to develop this document and those intended for its further maintenance are described in the ISO/IEC Directives, Part 1. In particular the different approval criteria needed for the different types of ISO documents should be noted. This document was drafted in accordance with the editorial rules of the ISO/IEC Directives, Part 2. www.iso.org/directives

Attention is drawn to the possibility that some of the elements of this document may be the subject of patent rights. ISO shall not be held responsible for identifying any or all such patent rights. Details of any patent rights identified during the development of the document will be in the Introduction and/or on the ISO list of patent declarations received. www.iso.org/patents

Any trade name used in this document is information given for the convenience of users and does not constitute an endorsement.

The committee responsible for this document is ISO/TC 33, *Refractories*

iTeh STANDARD PREVIEW
(standards.iteh.ai)

[ISO 16334:2013](https://standards.iteh.ai/catalog/standards/sist/88ebd6e8-acc3-4098-9385-a53b47c55521/iso-16334-2013)

<https://standards.iteh.ai/catalog/standards/sist/88ebd6e8-acc3-4098-9385-a53b47c55521/iso-16334-2013>

Monolithic refractory products — Determination of resistance to explosive spalling

1 Scope

This International Standard specifies a method for determining the resistance to explosive spalling of monolithic refractories.

2 Normative references

The following documents, in whole or in part, are normatively referenced in this document and are indispensable for its application. For dated references, only the edition cited applies. For undated references, the latest edition of the referenced document (including any amendments) applies.

ISO 836, *Terminology for refractories*

ISO 1927-5, *Monolithic (unshaped) refractory products — Part 5: Preparation and treatment of test pieces*

3 Terms and definitions

For the purposes of this document, the terms and definitions given in ISO 836 and the following apply.

3.1

transition-point temperature

indication of the dewaterability of the castable

Note 1 to entry: A low transition-point temperature indicates high dewaterability and this directly relates to high explosion resistance. A castable having a high transition-point temperature indicates poor dewaterability and low explosion resistance. (See [Annex A](#) for further information.)

4 Principle

A test specimen is prepared by casting and allowed to cure. The specimen is then enclosed in an explosion-proof cage before being placed in a preheated kiln at a prescribed temperature.

NOTE The method has been developed as a practical way of measuring a property. It is not designed to form part of acceptance testing for monolithic products. Rather, it is more useful for comparative purposes. It is also useful for monolithic design purposes

5 Apparatus

5.1 Mould. A split cylindrical mould with internal dimensions of 80 mm height and 80 mm diameter and having a provision to allow for *in situ* casting of a thermocouple into the centre of the cast specimen.

5.2 Thermocouple. A thin wire thermocouple (preferably Type K). The thermocouple needs to be sufficiently insulated to withstand heating to test temperature inside and long enough to reach a temperature recorder located sufficient distance from the kiln to avoid damage.

5.3 Temperature recorder. Any instrument capable of recording the temperature of the thermocouple, either continuously or at short intervals to an accuracy of 1 °C.

5.4 Explosion-proof cage. A cube with approximate dimensions of 150 mm per side, constructed of stainless steel mesh, having at least 60 % openings, and one side able to be opened. The construction should be strong enough to withstand explosion of the test specimen at the test temperature.

5.5 Kiln. Electric or gas, capable of restoring the kiln temperature to the required test temperature to within 5 °C, within 5 min after the test specimen is placed in the kiln.

5.6 Timing device. Any convenient timing device accurate to 1 s.

6 Test specimens

The test specimen shall be prepared in accordance with ISO 1927-5, using the mould as described in [5.1](#). If information about transition-point temperature is required, a wire thermocouple shall be cast *in situ* into the centre of the test specimen. The test specimen dimensions shall be 80 mm diameter by 80 mm height, with each dimension accurate to 1 mm. Following casting, the test specimen shall be prevented from drying prior to testing by placing in a sealed plastic bag, or by other means as agreed between the interested parties. The curing temperature is 20 °C to 25 °C.

7 Procedure

The procedure shall be as follows:

- a) Prepare sufficient test specimens in accordance with [Clause 6](#). The curing temperature is the subject of agreement between the interested parties. The specimens shall be tested as soon as practicable after a minimum of 24 h curing. Curing time should not exceed 28 h.
- b) Heat the kiln ([5.5](#)) to 600 °C or to a higher temperature if agreed between the parties.

The kiln shall be capable of restoring the kiln temperature to the required test temperature to within 5 °C, within 5 min after the test specimen is placed in the kiln. Soaking the kiln for 30 min at temperature prior to testing may assist with meeting this requirement.

- c) Place an untested specimen inside the explosion-proof cage ([5.4](#)), oriented as-cast, and secure the cage door opening. If a temperature recorder is being used, connect the thermocouple to the recorder.
- d) Place the cage inside the kiln and start the timer ([5.6](#)) (and the specimen temperature recorder, if a specimen thermocouple is used).
- e) Record the time(s) at which any explosions are heard.
- f) Leave the cage inside the kiln for 20 min as a safety precaution. After 20 min have elapsed, remove the cage from the kiln.
- g) Remove the test specimen from the cage and record the condition of the specimen according to the following classification:
 - 1) No damage: no damage to test specimen.
 - 2) Damage: the sample is cracked or has sustained minor surface damage (popouts < 15 mm diameter)
 - 3) Catastrophic damage: damage exceeding that described in item g) 2).
- h) At least two specimens shall be tested at each temperature. If the specimens are classified differently following the initial tests, further specimens may be tested at the same temperature.
- i) At the conclusion of testing at each temperature, raise the kiln temperature by 100 °C.

NOTE Conditions noted after item b) apply

- j) Repeat steps c) to i) until the specimen is deemed to have failed or the maximum required test temperature up to a maximum of 1 000 °C has been reached.

- k) Switch off the kiln.

8 Test report

The test report shall include the following information:

- a) A description of the sample as received and the preparation details according to ISO 1927-5. Report the curing temperature and time elapsed from casting to commencement of testing.
- b) The condition of each test specimen at each test temperature according to the classification described in [Clause 7 g](#)). Describe the extent of damage to each test specimen.
- c) The temperature profile and transition-point temperature of each test specimen if determined for each test temperature.
- d) A reference to this International Standard, i.e. ISO 16334.

iTeh STANDARD PREVIEW
(standards.iteh.ai)

ISO 16334:2013

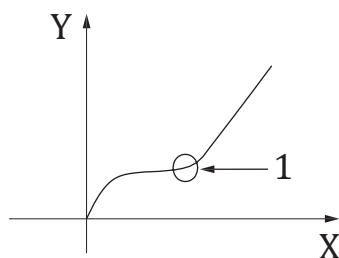
<https://standards.iteh.ai/catalog/standards/sist/88ebd6e8-acc3-4098-9385-a53b47c55521/iso-16334-2013>

Annex A (informative)

Method for determining the transition-point temperature

The procedure is as follows:

- a) Plot the temperature of the castable specimen against time during the test period (see Figure A.1).
- b) Locate the point where the curve turns up sharply. This is the point at which the vaporization of water inside the castable is virtually complete, allowing the temperature to rise more quickly. This is the transition-point temperature.



iTeh STANDARD PREVIEW
(standards.iteh.ai)

Key

- X Time (s)
Y Temperature (°C)
1 Transition-point temperature

[ISO 16334:2013](https://standards.iteh.ai/catalog/standards/sist/88ebd6e8-acc3-4098-9385-a53b47c55521/iso-16334-2013)

<https://standards.iteh.ai/catalog/standards/sist/88ebd6e8-acc3-4098-9385-a53b47c55521/iso-16334-2013>

Figure A.1 — Position of transition point

iTeh STANDARD PREVIEW
(standards.iteh.ai)

ISO 16334:2013

<https://standards.iteh.ai/catalog/standards/sist/88ebd6e8-acc3-4098-9385-a53b47c55521/iso-16334-2013>