



Network Functions Virtualisation (NFV) Release 3; Protocols and Data Models; RESTful protocols specification for the Policy Management Interface

Disclaimer

The present document has been produced and approved by the Network Functions Virtualisation (NFV) ETSI Industry Specification Group (ISG) and represents the views of those members who participated in this ISG. It does not necessarily represent the views of the entire ETSI membership.

Reference

DGS/NFV-SOL012ed341

Keywords

API, NFV, policy management

ETSI

650 Route des Lucioles
F-06921 Sophia Antipolis Cedex - FRANCE

Tel.: +33 4 92 94 42 00 Fax: +33 4 93 65 47 16

Siret N° 348 623 562 00017 - NAF 742 C
Association à but non lucratif enregistrée à la
Sous-Préfecture de Grasse (06) N° 7803/88

Important notice

The present document can be downloaded from:

<http://www.etsi.org/standards-search>

The present document may be made available in electronic versions and/or in print. The content of any electronic and/or print versions of the present document shall not be modified without the prior written authorization of ETSI. In case of any existing or perceived difference in contents between such versions and/or in print, the prevailing version of an ETSI deliverable is the one made publicly available in PDF format at www.etsi.org/deliver.

Users of the present document should be aware that the document may be subject to revision or change of status.

Information on the current status of this and other ETSI documents is available at

<https://portal.etsi.org/TB/ETSIDeliverableStatus.aspx>

If you find errors in the present document, please send your comment to one of the following services:

<https://portal.etsi.org/People/CommiteeSupportStaff.aspx>

Copyright Notification

No part may be reproduced or utilized in any form or by any means, electronic or mechanical, including photocopying and microfilm except as authorized by written permission of ETSI.

The content of the PDF version shall not be modified without the written authorization of ETSI.

The copyright and the foregoing restriction extend to reproduction in all media.

© ETSI 2020.

All rights reserved.

DECT™, **PLUGTESTS™**, **UMTS™** and the ETSI logo are trademarks of ETSI registered for the benefit of its Members.

3GPP™ and **LTE™** are trademarks of ETSI registered for the benefit of its Members and of the 3GPP Organizational Partners.

oneM2M™ logo is a trademark of ETSI registered for the benefit of its Members and of the oneM2M Partners.

GSM® and the GSM logo are trademarks registered and owned by the GSM Association.

Contents

Intellectual Property Rights	6
Foreword.....	6
Modal verbs terminology.....	6
1 Scope	7
2 References	7
2.1 Normative references	7
2.2 Informative references.....	8
3 Definition of terms, symbols and abbreviations.....	8
3.1 Terms.....	8
3.2 Symbols.....	8
3.3 Abbreviations	8
4 General aspects.....	8
4.1 Overview	8
4.2 Common data types	9
5 Policy Management interface	9
5.1 Description	9
5.2 API version.....	9
5.3 Resource structure and method	10
5.4 Sequence diagrams (informative).....	11
5.4.1 Flow of creating a policy	11
5.4.2 Flow of transferring a policy.....	12
5.4.3 Flow of querying/reading policies	13
5.4.4 Flow of fetching the content of a policy	14
5.4.5 Flow of modifying a policy	14
5.4.6 Flow of deleting a policy	15
5.4.7 Flow of managing subscriptions	16
5.4.8 Flow of sending notifications.....	17
5.5 Resources	18
5.5.1 Introduction.....	18
5.5.2 Resource: API versions.....	18
5.5.3 Resource: Policies.....	18
5.5.3.1 Description	18
5.5.3.2 Resource definition	18
5.5.3.3 Resource methods	19
5.5.3.3.1 POST	19
5.5.3.3.2 GET	19
5.5.3.3.3 PUT	21
5.5.3.3.4 PATCH.....	21
5.5.3.3.5 DELETE.....	21
5.5.4 Resource: Individual policy	21
5.5.4.1 Description	21
5.5.4.2 Resource definition	21
5.5.4.3 Resource methods	21
5.5.4.3.1 POST	21
5.5.4.3.2 GET	21
5.5.4.3.3 PUT	22
5.5.4.3.4 PATCH.....	22
5.5.4.3.5 DELETE.....	23
5.5.5 Resource: Selected version of an individual policy	24
5.5.5.1 Description	24
5.5.5.2 Resource definition	24
5.5.5.3 Resource methods	24
5.5.5.3.1 POST	24
5.5.5.3.2 GET	25

5.5.5.3.3	PUT	25
5.5.5.3.4	PATCH.....	25
5.5.5.3.5	DELETE.....	25
5.5.6	Resource: Particular version of an individual policy	26
5.5.6.1	Description	26
5.5.6.2	Resource definition	26
5.5.6.3	Resource methods	26
5.5.6.3.1	POST	26
5.5.6.3.2	GET	26
5.5.6.3.3	PUT	27
5.5.6.3.4	PATCH.....	28
5.5.6.3.5	DELETE.....	28
5.5.7	Resource: Subscriptions.....	28
5.5.7.1	Description	28
5.5.7.2	Resource definition	28
5.5.7.3	Resource methods	29
5.5.7.3.1	POST	29
5.5.7.3.2	GET	30
5.5.7.3.3	PUT	31
5.5.7.3.4	PATCH.....	31
5.5.7.3.5	DELETE.....	31
5.5.8	Resource: Individual subscription.....	32
5.5.8.1	Description	32
5.5.8.2	Resource definition	32
5.5.8.3	Resource methods	32
5.5.8.3.1	POST	32
5.5.8.3.2	GET	32
5.5.8.3.3	PUT	33
5.5.8.3.4	PATCH.....	33
5.5.8.3.5	DELETE.....	33
5.5.9	Resource: Notification endpoint.....	34
5.5.9.1	Description	34
5.5.9.2	Resource definition	34
5.5.9.3	Resource methods	34
5.5.9.3.1	POST	34
5.5.9.3.2	GET	34
5.5.9.3.3	PUT	35
5.5.9.3.4	PATCH.....	35
5.5.9.3.5	DELETE.....	35
5.6	Data model	35
5.6.1	Introduction.....	35
5.6.2	Resource and notification data types	35
5.6.2.1	Introduction.....	35
5.6.2.2	Type: CreatePolicyRequest.....	35
5.6.2.3	Type: Policy	37
5.6.2.4	Type: PolicyModifications.....	37
5.6.2.5	Type: PolicySubscriptionRequest	38
5.6.2.6	Type: PolicySubscription	38
5.6.2.7	Type: PolicyChangeNotification.....	39
5.6.2.8	Type: PolicyConflictNotification.....	39
5.6.3	Referenced structured data types	40
5.6.3.1	Introduction.....	40
5.6.3.2	Type: PolicyNotificationsFilter.....	40
5.6.4	Referenced simple data types and enumerations	41
5.6.4.1	Introduction.....	41
5.6.4.2	Simple data types	41
5.6.4.3	Enumeration: ActivationStatus	41
5.6.4.4	Enumeration: TransferStatus.....	41
5.6.4.5	Enumeration: PolicyOperationType.....	41
5.7	Policy management state model and error handling.....	41
5.7.1	Introduction.....	41
5.7.2	States and state transitions	42

5.7.3	Handling of errors.....	43
5.7.3.1	Failure during transfer of the policy content.....	43
Annex A (informative):	Mapping operations to protocol elements.....	44
Annex B (informative):	Change History	45
History		46

iTeh STANDARD PREVIEW
(standards.iteh.ai)

Full standard:
<https://standards.iteh.ai/catalog/standards/sist/3f18dd4d-9ba8-4585-b1b0-61e90dde696/etsi-gs-nfv-sol-012-v3.4.1-2020-10>

Intellectual Property Rights

Essential patents

IPRs essential or potentially essential to normative deliverables may have been declared to ETSI. The information pertaining to these essential IPRs, if any, is publicly available for **ETSI members and non-members**, and can be found in ETSI SR 000 314: "*Intellectual Property Rights (IPRs); Essential, or potentially Essential, IPRs notified to ETSI in respect of ETSI standards*", which is available from the ETSI Secretariat. Latest updates are available on the ETSI Web server (<https://ipr.etsi.org/>).

Pursuant to the ETSI IPR Policy, no investigation, including IPR searches, has been carried out by ETSI. No guarantee can be given as to the existence of other IPRs not referenced in ETSI SR 000 314 (or the updates on the ETSI Web server) which are, or may be, or may become, essential to the present document.

Trademarks

The present document may include trademarks and/or tradenames which are asserted and/or registered by their owners. ETSI claims no ownership of these except for any which are indicated as being the property of ETSI, and conveys no right to use or reproduce any trademark and/or tradename. Mention of those trademarks in the present document does not constitute an endorsement by ETSI of products, services or organizations associated with those trademarks.

Foreword

This Group Specification (GS) has been produced by ETSI Industry Specification Group (ISG) Network Functions Virtualisation (NFV).

Modal verbs terminology

In the present document "**shall**", "**shall not**", "**should**", "**should not**", "**may**", "**need not**", "**will**", "**will not**", "**can**" and "**cannot**" are to be interpreted as described in clause 3.2 of the [ETSI Drafting Rules](#) (Verbal forms for the expression of provisions).

"**must**" and "**must not**" are **NOT** allowed in ETSI deliverables except when used in direct citation.

1 Scope

The present document specifies a RESTful protocol and data model fulfilling the requirements specified in the following Group Specifications for the policy management interfaces used over the NFV-MANO reference points:

- ETSI GS NFV-IFA 005 [1]
- ETSI GS NFV-IFA 006 [2]
- ETSI GS NFV-IFA 007 [3]
- ETSI GS NFV-IFA 008 [4]
- ETSI GS NFV-IFA 013 [5]
- ETSI GS NFV-IFA 030 [6]

A data model for policy content is out of scope of the present document.

2 References

2.1 Normative references

References are either specific (identified by date of publication and/or edition number or version number) or non-specific. For specific references, only the cited version applies. For non-specific references, the latest version of the referenced document (including any amendments) applies.

Referenced documents which are not found to be publicly available in the expected location might be found at <https://docbox.etsi.org/Reference>.

NOTE: While any hyperlinks included in this clause were valid at the time of publication, ETSI cannot guarantee their long term validity.

The following referenced documents are necessary for the application of the present document.

- [1] ETSI GS NFV-IFA 005: "Network Functions Virtualisation (NFV) Release 3; Management and Orchestration; Or-Vi reference point - Interface and Information Model Specification".
- [2] ETSI GS NFV-IFA 006: "Network Functions Virtualisation (NFV) Release 3; Management and Orchestration; Vi-Vnfm reference point - Interface and Information Model Specification".
- [3] ETSI GS NFV-IFA 007: "Network Functions Virtualisation (NFV) Release 3; Management and Orchestration; Or-Vnfm reference point - Interface and Information Model Specification".
- [4] ETSI GS NFV-IFA 008: "Network Functions Virtualisation (NFV) Release 3; Management and Orchestration; Ve-Vnfm reference point - Interface and Information Model Specification".
- [5] ETSI GS NFV-IFA 013: "Network Functions Virtualisation (NFV) Release 3; Management and Orchestration; Os-Ma-Nfvo reference point - Interface and Information Model Specification".
- [6] ETSI GS NFV-IFA 030: "Network Functions Virtualisation (NFV) Release 3; Management and Orchestration; Multiple Administrative Domain Aspect Interfaces Specification".
- [7] ETSI GS NFV-SOL 013: "Network Functions Virtualisation (NFV) Release 3; Protocols and Data Models; Specification of common aspects for RESTful NFV MANO APIs".

2.2 Informative references

References are either specific (identified by date of publication and/or edition number or version number) or non-specific. For specific references, only the cited version applies. For non-specific references, the latest version of the referenced document (including any amendments) applies.

NOTE: While any hyperlinks included in this clause were valid at the time of publication, ETSI cannot guarantee their long term validity.

The following referenced documents are not necessary for the application of the present document but they assist the user with regard to a particular subject area.

- [i.1] ETSI GR NFV 003: "Network Functions Virtualisation (NFV); Terminology for Main Concepts in NFV".
- [i.2] ETSI GR NFV-IFA 023: "Network Functions Virtualisation (NFV); Management and Orchestration; Report on Policy Management in MANO; Release 3".

3 Definition of terms, symbols and abbreviations

3.1 Terms

For the purposes of the present document, the terms given in ETSI GR NFV 003 [i.1] apply.

3.2 Symbols

Void.

3.3 Abbreviations

For the purposes of the present document, the abbreviations given in ETSI GR NFV 003 [i.1] and the following apply:

PF	Policy Function
REST	Representational State Transfer
URI	Uniform Resource Identifier

4 General aspects

4.1 Overview

The present document defines the protocol and data model for the policy management interface used over the following reference points, in the form of RESTful Application Programming Interfaces (APIs) specifications:

- Os-Ma-nfvo reference point (interface produced by the NFVO towards the OSS/BSS)
- Or-Vnfm reference point (interface produced by the VNFM towards the NFVO)
- Ve-Vnfm-em reference point (interface produced by the VNFM towards the EM)
- Or-Vi reference point (interface produced by the VIM towards the NFVO)
- Vi-Vnfm reference point (interface produced by the VIM towards the VNFM)
- Or-Or reference point (interface produced by NFVO-N towards NFVO-C)

The design of the protocol and data model for the policy management interface is based on the information model and requirements defined in ETSI GS NFV-IFA 005 [1], ETSI GS NFV-IFA 006 [2], ETSI GS NFV-IFA 007 [3], ETSI GS NFV-IFA 008 [4], ETSI GS NFV-IFA 013 [5] and ETSI GS NFV-IFA 030 [6].

In clause 4, general aspects are specified that apply to the policy management interface over different reference points. In addition, the provisions in clauses 4, 5, 6, 8 and 9 of ETSI GS NFV-SOL 013 [7] define common aspects of RESTful NFV-MANO APIs, and shall apply for all APIs defined in the present document.

In clause 5, the protocol and data model for the policy management interface is specified. The resource structure with associated HTTP methods is defined and applicable flows are provided. Further, the resources and the data model are specified in detail.

4.2 Common data types

The structured data types and simple data types defined in clause 7 of ETSI GS NFV-SOL 013 [7] shall apply in the present document.

5 Policy Management interface

5.1 Description

This interface allows the API consumer to invoke policy management operations towards the API producer, to subscribe to notifications regarding policy changes and any detected policy conflicts, and to retrieve API version information.

The operations provided through this interface are:

- Transfer Policy
- Delete Policy
- Query Policy
- Activate Policy
- Deactivate Policy
- Associate Policy
- Disassociate Policy
- Subscribe
- Query Subscription Information
- Terminate Subscription
- Notify

NOTE: The association feature (i.e. the associate policy and disassociate policy operations) applies when the Policy Function (PF) that enforces the policy is NFVO, NFVO-N or VNFM.

5.2 API version

For the policy management interface as specified in the present document, the MAJOR version field shall be 1, the MINOR version field shall be 0 and the PATCH version field shall be 0 (see clause 9.1 of ETSI GS NFV-SOL 013 [7] for a definition of the version fields). Consequently, the {apiMajorVersion} URI variable shall be set to "v1".

5.3 Resource structure and method

All resource URIs of the API shall use the base URI specification defined in clause 4.1 of ETSI GS NFV-SOL 013 [7]. The string "nfvpolicy" shall be used to represent {apiName}. All resource URIs in the clauses below are defined relative to the above base URI.

Figure 5.3-1 shows the overall resource URI structure defined for the policy management interface.

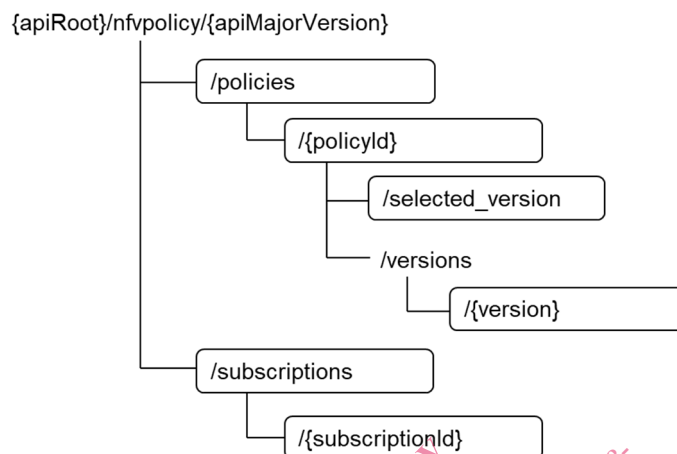


Figure 5.3-1: Resource URI structure of the policy management interface

Table 5.3-1 lists the individual resources defined, and the applicable HTTP methods.

The API producer shall support responding to requests for all HTTP methods on the resources in table 5.3-1 that are marked as "M" (mandatory) in the "Cat" column. The API producer shall also support the "API versions" resource as specified in clause 9.3.2 of ETSI GS NFV-SOL 013 [7].

Table 5.3-1: Resources and methods overview of the policy management interface

Resource name	Resource URI	HTTP Method	Cat	Meaning
Policies	/policies	POST	M	Create a new individual policy resource.
		GET	M	Query multiple policies.
Individual policy	/policies/{policyId}	GET	M	Read an individual policy.
		PATCH	M	Activate/deactivate, or modify the associations, or change the selected version of an individual policy.
		DELETE	M	Delete an individual policy.
Selected version of an individual policy	/policies/{policyId}/selected_version	GET	M	Read the selected version of an individual policy.
Particular version of an individual policy	/policies/{policyId}/versions/{version}	GET	M	Read a particular version of an individual policy.
		PUT	M	Transfer the content of a particular version of an individual policy.
		DELETE	M	Delete a particular version of an individual policy.
Subscriptions	/subscriptions	POST	M	Subscribe to notifications of policy changes or conflicts.
		GET	M	Query multiple subscriptions.
Individual subscription	/subscriptions/{subscriptionId}	GET	M	Read an individual subscription resource.
		DELETE	M	Terminate a subscription.
Notification endpoint	(client-provided)	POST	See note	Notify about policy changes or conflicts. See note.
		GET	See note	Test the notification endpoint. See note.
NOTE:	The API producer shall support invoking the HTTP methods defined for the "Notification endpoint" resource exposed by the API consumer. If the API consumer supports invoking the POST method on the "Subscriptions" resource towards the API producer, it shall also support responding to the HTTP requests defined for the "Notification endpoint" resource.			

5.4 Sequence diagrams (informative)

5.4.1 Flow of creating a policy

This clause describes a sequence for creating an individual policy resource.

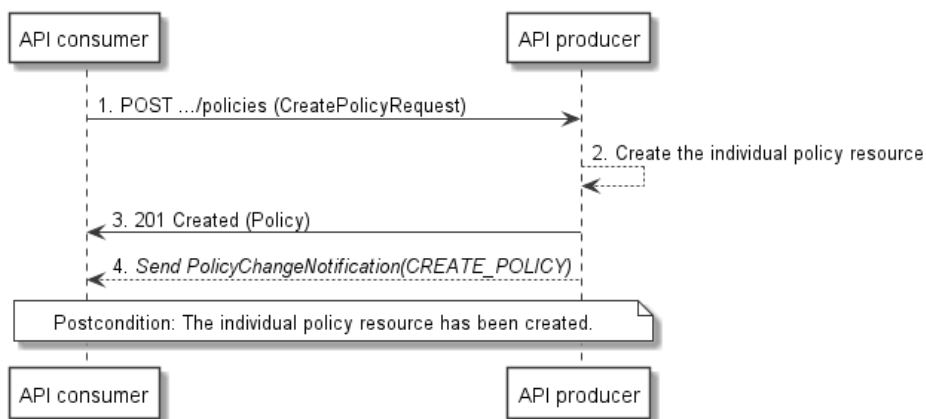


Figure 5.4.1-1: Flow of policy creation

Policy creation, as illustrated in figure 5.4.1-1, consists of the following steps.

Precondition: none.

- 1) The API consumer sends a POST request to the "Policies" resource, including one data structure of type "CreatePolicyRequest" in the payload body.
- 2) The API producer creates an individual policy resource in CREATED/DEACTIVATED state.
- 3) The API producer returns a "201 Created" response to the API consumer, and includes in the payload body a representation of the policy, and provides the URI of the newly-created individual policy resource in the "Location" HTTP header.
- 4) The API producer sends a policy change notification (see clause 5.4.8) to the API consumer to indicate the creation of the individual policy resource.

Postcondition: Upon successful completion, the individual policy resource has been created.

Error handling: In case of failure, appropriate error information is provided in the response.

5.4.2 Flow of transferring a policy

This clause describes a sequence for transferring a policy.

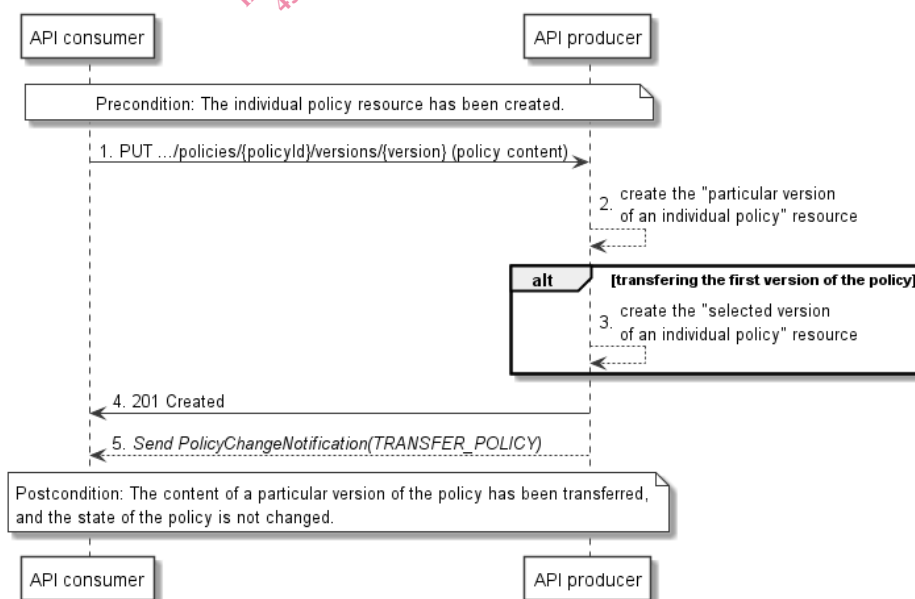


Figure 5.4.2-1: Flow of policy transfer