



**Digital cellular telecommunications system (Phase 2+) (GSM);  
Universal Mobile Telecommunications System (UMTS);  
LTE;  
Point-to-Point (PP) Short Message Service (SMS)  
support on mobile radio interface  
(3GPP TS 24.011 version 15.3.0 Release 15)**



---

Reference

RTS/TSGC-0124011vf30

---

Keywords

GSM,LTE,UMTS

**ETSI**

650 Route des Lucioles  
F-06921 Sophia Antipolis Cedex - FRANCE

Tel.: +33 4 92 94 42 00 Fax: +33 4 93 65 47 16

Siret N° 348 623 562 00017 - NAF 742 C  
Association à but non lucratif enregistrée à la  
Sous-Préfecture de Grasse (06) N° 7803/88

---

**Important notice**

The present document can be downloaded from:

<http://www.etsi.org/standards-search>

The present document may be made available in electronic versions and/or in print. The content of any electronic and/or print versions of the present document shall not be modified without the prior written authorization of ETSI. In case of any existing or perceived difference in contents between such versions and/or in print, the prevailing version of an ETSI deliverable is the one made publicly available in PDF format at [www.etsi.org/deliver](http://www.etsi.org/deliver).

Users of the present document should be aware that the document may be subject to revision or change of status.

Information on the current status of this and other ETSI documents is available at

<https://portal.etsi.org/TB/ETSIDeliverableStatus.aspx>

If you find errors in the present document, please send your comment to one of the following services:

<https://portal.etsi.org/People/CommiteeSupportStaff.aspx>

---

**Copyright Notification**

No part may be reproduced or utilized in any form or by any means, electronic or mechanical, including photocopying and microfilm except as authorized by written permission of ETSI.

The content of the PDF version shall not be modified without the written authorization of ETSI.

The copyright and the foregoing restriction extend to reproduction in all media.

© ETSI 2019.

All rights reserved.

**DECT™**, **PLUGTESTS™**, **UMTS™** and the ETSI logo are trademarks of ETSI registered for the benefit of its Members.

**3GPP™** and **LTE™** are trademarks of ETSI registered for the benefit of its Members and of the 3GPP Organizational Partners.

**oneM2M™** logo is a trademark of ETSI registered for the benefit of its Members and of the oneM2M Partners.

**GSM®** and the GSM logo are trademarks registered and owned by the GSM Association.

---

# Intellectual Property Rights

## Essential patents

IPRs essential or potentially essential to normative deliverables may have been declared to ETSI. The information pertaining to these essential IPRs, if any, is publicly available for **ETSI members and non-members**, and can be found in ETSI SR 000 314: *"Intellectual Property Rights (IPRs); Essential, or potentially Essential, IPRs notified to ETSI in respect of ETSI standards"*, which is available from the ETSI Secretariat. Latest updates are available on the ETSI Web server (<https://ipr.etsi.org/>).

Pursuant to the ETSI IPR Policy, no investigation, including IPR searches, has been carried out by ETSI. No guarantee can be given as to the existence of other IPRs not referenced in ETSI SR 000 314 (or the updates on the ETSI Web server) which are, or may be, or may become, essential to the present document.

## Trademarks

The present document may include trademarks and/or tradenames which are asserted and/or registered by their owners. ETSI claims no ownership of these except for any which are indicated as being the property of ETSI, and conveys no right to use or reproduce any trademark and/or tradename. Mention of those trademarks in the present document does not constitute an endorsement by ETSI of products, services or organizations associated with those trademarks.

---

# Foreword

This Technical Specification (TS) has been produced by ETSI 3rd Generation Partnership Project (3GPP).

The present document may refer to technical specifications or reports using their 3GPP identities, UMTS identities or GSM identities. These should be interpreted as being references to the corresponding ETSI deliverables.

The cross reference between GSM, UMTS, 3GPP and ETSI identities can be found under <http://webapp.etsi.org/key/queryform.asp>.

---

# Modal verbs terminology

In the present document "**shall**", "**shall not**", "**should**", "**should not**", "**may**", "**need not**", "**will**", "**will not**", "**can**" and "**cannot**" are to be interpreted as described in clause 3.2 of the [ETSI Drafting Rules](#) (Verbal forms for the expression of provisions).

"**must**" and "**must not**" are **NOT** allowed in ETSI deliverables except when used in direct citation.

# Contents

Intellectual Property Rights .....	2
Foreword.....	2
Modal verbs terminology.....	2
Foreword.....	7
1 Scope .....	8
1.1 References .....	8
1.2 Abbreviations .....	9
2 Overview of Short Message Service (SMS) support.....	9
2.1 Protocols and protocol architecture .....	10
2.2 Use of channels (A/Gb mode only) .....	12
2.3 Layer 2 SAPI 3 handling for circuit switched in A/Gb mode .....	13
2.4 Layer 2 (LLC) GPRS support (A/Gb mode only) .....	13
2.5 GSMS entity in Iu mode.....	14
2.5A ESMS entity in S1 mode .....	15
2.5B 5GSMS entity in N1 mode .....	15
2.6 MS support for SMS over GPRS.....	16
2.7 MS support for device triggering short message .....	16
3 Service definition .....	16
3.1 General .....	16
3.2 Service provided by the CM-sublayer.....	17
3.2.1 Definition of primitives on the MS side.....	17
3.2.1.1 MNSMS-ABORT-REQuest.....	17
3.2.1.2 MNSMS-DATA-REQuest .....	17
3.2.1.3 MNSMS-DATA-INDication .....	18
3.2.1.4 MNSMS-ESTablish-REQuest.....	18
3.2.1.5 MNSMS-ESTablish-INDication .....	18
3.2.1.6 MNSMS-ERROR-INDication .....	18
3.2.1.7 MNSMS-RElease-REQuest.....	18
3.2.2 Definition of primitives on the network side .....	18
3.2.2.1 MNSMS-ABORT-REQuest.....	19
3.2.2.2 MNSMS-DATA-REQuest.....	19
3.2.2.3 MNSMS-DATA-INDication.....	19
3.2.2.4 MNSMS-ESTablish-REQuest.....	19
3.2.2.5 MNSMS-ESTablish-INDication .....	19
3.2.2.6 MNSMS-ERROR-INDication .....	19
3.2.2.7 MNSMS-RElease-REQuest.....	20
3.3 Service provided by SM-RL.....	20
3.3.1 Definition of primitives on the MS side.....	20
3.3.1.1 SM-RL-DATA-REQuest .....	20
3.3.1.2 SM-RL-DATA-INDication.....	20
3.3.1.3 SM-RL-MEMORY-AVAILABLE-REQuest .....	20
3.3.1.4 SM-RL-REPORT-REQuest.....	21
3.3.1.5 SM-RL-REPORT-INDication.....	21
3.3.2 Definition of primitives on the network side .....	21
3.3.2.1 SM-RL-DATA-REQuest .....	21
3.3.2.2 SM-RL-DATA-INDication.....	21
3.3.2.3 SM-RL-MEMORY-AVAILABLE-INDication.....	22
3.3.2.4 SM-RL-REPORT-REQuest .....	22
3.3.2.5 SM-RL-REPORT-INDication.....	22
4 [Void] .....	22
5 CM-procedures.....	22
5.1 General .....	22
5.2 Short Message Control states .....	22
5.2.1 SMC-CS states at the MS side of the radio interface.....	22

5.2.1.1	Mobile Originating Case .....	22
5.2.1.1.1	MO-Idle (State 0) .....	22
5.2.1.1.2	MO-MM-connection pending (State 1) .....	22
5.2.1.1.3	MO-Wait for CP-ACK (State 2).....	23
5.2.1.1.4	MO-MM-connection established (State 3) .....	23
5.2.1.2	Mobile Terminating case.....	23
5.2.1.2.1	MT-Idle (State 0).....	23
5.2.1.2.2	MT-Wait for CP-ACK (State 2) .....	23
5.2.1.2.3	MT-MM-connection established (State 3).....	23
5.2.2	SMC-GP, SMC-EP and SMC-5G states at the MS side of the radio interface .....	23
5.2.2.1	Mobile Originating Case .....	23
5.2.2.1.1	MO-Idle (State 0) .....	23
5.2.2.1.2	MO-GMM-connection pending (State 1) (Iu mode only) .....	23
5.2.2.1.3	MO-Wait for CP-ACK (State 2).....	23
5.2.2.1.4	MO-Wait for CP-Data (State 3).....	23
5.2.2.1.5	MO-EMM-connection pending (State 4) (S1 mode only).....	23
5.2.2.2	Mobile Terminating case.....	24
5.2.2.2.1	MT-Idle (State 0).....	24
5.2.2.2.2	MT-Wait for RP-ACK (State 1) .....	24
5.2.2.2.3	MT-Wait for CP-ACK (State 2) .....	24
5.2.3	SMC-CS states at the network side of the radio interface.....	24
5.2.3.1	Mobile Originating Case .....	24
5.2.3.1.1	MO-Idle (State 0) .....	24
5.2.3.1.2	MO-Wait for CP-ACK (State 2).....	24
5.2.3.1.3	MO-MM-connection established (State 3).....	24
5.2.3.2	Mobile Terminating Case.....	24
5.2.3.2.1	MT-Idle (State 0).....	24
5.2.3.2.2	MT-MM-connection pending (State 1) .....	24
5.2.3.2.3	MT-Wait for CP-ACK (State 2).....	24
5.2.3.2.4	MT-MM-connection established (State 3).....	24
5.2.4	SMC-GP, SMC-EP and SMC-5G states at the network side of the radio interface.....	25
5.2.4.1	Mobile Originating Case .....	25
5.2.4.1.1	MO-Idle (State 0) .....	25
5.2.4.1.2	MO-Wait for RP-ACK (State 1).....	25
5.2.4.1.3	MO-Wait for CP-ACK(State 2).....	25
5.2.4.2	Mobile Terminating Case.....	25
5.2.4.2.1	MT-Idle (State 0).....	25
5.2.4.2.2	MT-Wait for CP-ACK (State 1) .....	25
5.2.4.2.3	MT-Wait for CP DATA (State 2).....	25
5.3	Short Message Control procedures.....	25
5.3.1	MM-connection establishment for circuit switched service .....	25
5.3.2	RPDU transfer .....	26
5.3.2.1	RPDU transfer for circuit switched service.....	26
5.3.2.2	RPDU transfer for GPRS, EPS and 5GS.....	26
5.3.3	Release of MM and CM connections.....	28
5.3.4	Abnormal cases.....	28
5.4	Concatenating short message or notification transfers .....	29
6	SM-RL-procedures.....	30
6.1	General .....	30
6.2	Transition states of SMR entity .....	30
6.2.1	SMR-states at the MS-side of the radio interface .....	30
6.2.1.1	Idle (State 0).....	30
6.2.1.2	Wait for RP-ACK (State 1) .....	30
6.2.1.2a	Wait to send RP-ACK (State 3) .....	30
6.2.1.3	Wait for RETRANS TIMER (State 4) .....	31
6.2.2	SMR-states at the network side of the radio interface .....	31
6.2.2.1	Idle (State 0).....	31
6.2.2.2	Wait for RP-ACK (State 1) .....	31
6.2.2.3	Wait to send RP-ACK (State 3) .....	31
6.3	Short Message Relay procedures.....	31
6.3.1	TPDU relaying.....	31

6.3.2	[Void].....	32
6.3.3	Notification relaying.....	32
6.3.3.1	MS side .....	32
6.3.3.1.1	Idle state .....	32
6.3.3.1.2	Wait for RP-ACK state.....	32
6.3.3.1.3	Wait for RETRANS Timer state.....	33
6.3.3.2	Network side .....	33
6.3.3.2.1	Idle state .....	33
6.3.3.2.2	Wait to Send RP-ACK state .....	33
6.3.4	Abnormal cases.....	33
7	Message functional definitions and content .....	33
7.1	General .....	33
7.2	Messages for short message or notification transfer on CM .....	34
7.2.1	CP-DATA .....	34
7.2.2	CP-ACK.....	34
7.2.3	CP-ERROR.....	34
7.3	Messages for short message and notification transfer on SM-RL .....	34
7.3.1	RP-DATA .....	35
7.3.1.1	RP-DATA (Network to Mobile Station) .....	35
7.3.1.2	RP-DATA (Mobile Station to Network) .....	35
7.3.2	RP-SMMA.....	35
7.3.3	RP-ACK.....	35
7.3.4	RP-ERROR.....	36
8	Message format and information elements coding.....	36
8.1	CP-messages.....	36
8.1.1	General.....	36
8.1.2	Protocol Discriminator and Transaction Identifier .....	36
8.1.3	Message type .....	36
8.1.4	Other required information elements .....	37
8.1.4.1	CP-User data element.....	37
8.1.4.2	CP-Cause element.....	37
8.2	RP-messages.....	38
8.2.1	General.....	38
8.2.2	Message type indicator (MTI) .....	38
8.2.3	Message reference.....	38
8.2.4	[Void].....	39
8.2.5	Other required information elements .....	39
8.2.5.1	Originator address element.....	39
8.2.5.2	Destination address element.....	39
8.2.5.3	RP-User data element.....	40
8.2.5.4	RP-Cause element .....	40
9	Handling of unknown, unforeseen, and erroneous protocol data .....	42
9.1	General .....	42
9.2	CP Error Handling.....	42
9.2.1	Message too short .....	43
9.2.2	Unknown or unforeseen transaction identifier .....	43
9.2.3	Unknown or unforeseen message type.....	43
9.2.4	Non-semantical mandatory information element errors.....	43
9.2.5	Messages with semantically incorrect contents .....	43
9.3	RP Error Handling.....	44
9.3.1	Message too short .....	44
9.3.2	Unknown or unforeseen Message Reference .....	44
9.3.3	Unknown or unforeseen message type.....	44
9.3.4	Non-semantical mandatory information element errors.....	44
9.3.5	Messages with semantically incorrect contents .....	45
10	Timers.....	45
10.1	Timers when the MS is not using EPS services with control plane CIoT EPS optimization .....	45
10.2	Timers when the MS is using EPS services with control plane CIoT EPS optimization .....	45

<b>Annex A (informative):</b>	<b>Arrow diagrams .....</b>	<b>47</b>
<b>Annex B (normative):</b>	<b>SDL-description of the CM-layer .....</b>	<b>58</b>
B.1	Introduction .....	58
<b>Annex C (informative):</b>	<b>Arrow diagrams .....</b>	<b>119</b>
<b>Annex D (normative):</b>	<b>SDL-description of the short message relay layer .....</b>	<b>125</b>
D.1	Introduction .....	125
<b>Annex E (informative):</b>	<b>Cause definition.....</b>	<b>133</b>
<b>Annex F (informative):</b>	<b>LAPDm SAPI 3 handling for short message service .....</b>	<b>138</b>
<b>Annex G (informative):</b>	<b>Change history .....</b>	<b>145</b>
History .....		148

**iTeh STANDARD PREVIEW**  
(standards.iteh.ai)

Full standard:  
<https://standards.iteh.ai/catalog/standards/sist/f6d68e4e-282b-408a-a842-911b62bb1cc5/etsi-ts-124-011-v15.3.0-2019-04>

---

# Foreword

This Technical Specification (TS) has been produced by the 3<sup>rd</sup> Generation Partnership Project (3GPP).

The present document defines the Short Message Service (SMS) support on mobile radio interface within the 3GPP system.

The contents of the present document are subject to continuing work within the TSG and may change following formal TSG approval. Should the TSG modify the contents of the present document, it will be re-released by the TSG with an identifying change of release date and an increase in version number as follows:

Version x.y.z

where:

- x the first digit:
  - 1 presented to TSG for information;
  - 2 presented to TSG for approval;
  - 3 or greater indicates TSG approved document under change control.
- y the second digit is incremented for all changes of substance, i.e. technical enhancements, corrections, updates, etc.
- z the third digit is incremented when editorial only changes have been incorporated in the document.

**ITeH STANDARD PREVIEW**  
(standards.iteh.ai)  
Full standard:  
<https://standards.iteh.ai/catalog/standards/sist/f6d6c74e-282b-408a-a842-911b62bb1cc5/etsi-ts-124-011-v15.3.0-2019-04>

# 1 Scope

The present document specifies the procedures used across the mobile radio interface by the signalling layer 3 function Short Message Control (SMC) and Short Message Relay function (SM-RL) for circuit switched in A/Gb mode, GPRS, EPS, and 5GS.

## 1.1 References

The following documents contain provisions which, through reference in this text, constitute provisions of the present document.

- References are either specific (identified by date of publication, edition number, version number, etc.) or non-specific.
- For a specific reference, subsequent revisions do not apply.
- For a non-specific reference, the latest version applies. In the case of a reference to a 3GPP document (including a GSM document), a non-specific reference implicitly refers to the latest version of that document *in the same Release as the present document*.

- [1] Void.
- [1a] 3GPP TR 21.905: "Vocabulary for 3GPP Specifications".
- [2] 3GPP TS 23.040: "Technical realization of the Short Message Service (SMS) Point-to-Point (PP)".
- [3a] 3GPP TS 23.060: "General Packet Radio Service (GPRS); Service description; Stage 2".
- [3] 3GPP TS 44.006: "Mobile Station - Base Station System (MS - BSS) interface; Data Link (DL) layer specification".
- [4] 3GPP TS 24.007: "Mobile radio interface signalling layer 3; General aspects".
- [5] 3GPP TS 24.008: "Mobile radio interface layer 3 specification".
- [5a] 3GPP TS 25.331: "Radio Resource Control (RRC); Protocol Specification".
- [5b] 3GPP TS 33.102: "3G Security; Security Architecture".
- [5c] 3GPP TS 42.017: "Subscriber Identity Modules (SIM); Functional characteristics".
- [6a] 3GPP TS 44.064: "General Packet Radio Service (GPRS); Logical Link Control (LLC) layer specification".
- [6] ISO 7498: "Information processing systems - Open Systems Interconnection - Basic Reference Model".
- [7] 3GPP TS 44.018: "Mobile radio interface layer 3 specification; Radio Resource Control Protocol".
- [8] 3GPP TS 25.413: "UTRAN Iu interface RANAP signalling".
- [9] 3GPP TS 23.401: "General Packet Radio Service (GPRS) enhancements for Evolved Universal Terrestrial Radio Access Network (E-UTRAN) access".
- [10] 3GPP TS 24.301: "Non-Access-Stratum (NAS) protocol for Evolved Packet System (EPS); Stage 3".
- [11] 3GPP TS 23.272: "Circuit Switched Fallback in Evolved Packet System; Stage 2".
- [12] 3GPP TS 29.118: "Mobility Management Entity (MME) – Visitor Location Register (VLR) SGs interface specification".
- [13] 3GPP TS 23.501: "System Architecture for the 5G System; Stage 2".
- [14] 3GPP TS 23.502: "Procedures for the 5G System; Stage 2".

- [15] 3GPP TS 24.501: "Non-Access-Stratum (NAS) protocol for 5G System (5GS); Stage 3".
- [16] 3GPP TS 29.518: "5G System; Access and Mobility Management Services; Stage 3".
- [17] 3GPP TS 29.540: "5G System; SMS Services; Stage 3".

## 1.2 Abbreviations

For the purpose of the present document, the abbreviations given in 3GPP TR 21.905 [1a] and the following apply:

**RR connection:** a RR connection is a dedicated physical circuit switched domain connection used by the two RR or RRC peer entities to support the upper layers' exchange of information flows.

**PS signalling connection:** is a peer to peer UMTS connection between MS and CN packet domain node.

**GPRS:** Packet Services for GSM and UMTS system.

The label (**A/Gb mode only**): indicates this section or paragraph applies only to GSM system. For multi system case this is determined by the current serving radio access network.

The label (**Iu mode only**): indicates this section or paragraph applies only to UMTS system. For multi system case this is determined by the current serving radio access network.

The label (**S1 mode only**): indicates this section or paragraph applies only to Evolved Packet Core (EPC) and E-UTRAN access. For multi system case this is determined by the current serving radio access network.

**In A/Gb mode,...:** Indicates this paragraph applies only to GSM System. For multi system case this is determined by the current serving radio access network.

**In Iu mode,...:** Indicates this paragraph applies only to UMTS System. For multi system case this is determined by the current serving radio access network.

**In S1 mode,...:** Indicates this paragraph applies only to Evolved Packet Core and E-UTRAN access. For multi system case this is determined by the current serving radio access network.

**In N1 mode:** Indicates this paragraph applies only to 5G core network and NG-RAN access. For multi system case this is determined by the current serving radio access network.

**SIM:** Subscriber Identity Module (see 3GPP TS 42.017 [5c]). This specification makes no distinction between SIM and USIM.

**MS:** Mobile Station. This specification makes no distinction between MS and UE.

For the purposes of the present document, the following terms and definitions given in 3GPP TS 24.301 [10] apply:

**UE using EPS services with control plane CIoT EPS optimization**

---

## 2 Overview of Short Message Service (SMS) support

The purpose of the Short Message Service is to provide the means to transfer messages between a GSM PLMN Mobile Station (MS) and a Short Message Entity via a Service Centre, as described in 3GPP TS 23.040 [2]. The terms "MO" - Mobile Originating - and "MT" - Mobile Terminating - are used to indicate the direction in which the short message is sent.

The present document describes the procedures necessary to support the Short Message Service between the MS and the MSC or SGSN or MME or SMSF and vice versa, as described in 3GPP TS 23.040 [2].

The procedures are based on services provided by the Mobility Management sublayer as described in 3GPP TS 24.007 [4]/3GPP TS 24.008 [5] for CS in A/Gb mode and CS/PS services in Iu mode, 3GPP 24.301 [10] for CS/PS services in S1 mode, 3GPP TS 24.501 [15] for N1 mode and the Logical Link Control layer described in 3GPP TS 44.064 [6a] for GPRS services. For CS/PS service in S1 mode, depending on network configuration and UE subscription data, network may choose to use either packet-switched service or circuit-switched service to provide SMS

service. If circuit-switched service is used instead of packet-switched service, then the messages are tunneled through the MME. In this case the network also uses procedures described in 3GPP 29.118 [12].

## 2.1 Protocols and protocol architecture

In Iu mode only, integrity protected signalling (see 3GPP TS 24.008 [5], subclause 'Integrity Protection of Signalling Messages' and in general, see 3GPP TS 33.102 [5b]) is mandatory. In Iu mode only, all protocols shall use integrity protected signalling. Integrity protection of all SMS signalling messages is the responsibility of lower layers. It is the network which activates integrity protection. This is done using the security mode control procedure (3GPP TS 25.331 [5a]).

The hierarchical model in figure 2.1a shows the layer structure of the MSC and the MS in A/Gb mode. The hierarchical model in figure 2.1c shows the layer structure of the SGSN and the MS in Iu mode. The hierarchical model in figure 2.1d shows the layer structure of the MSC and the MS in S1 mode. The hierarchical model in figure 2.1e shows the layer structure of the MME and the MS in S1 mode.

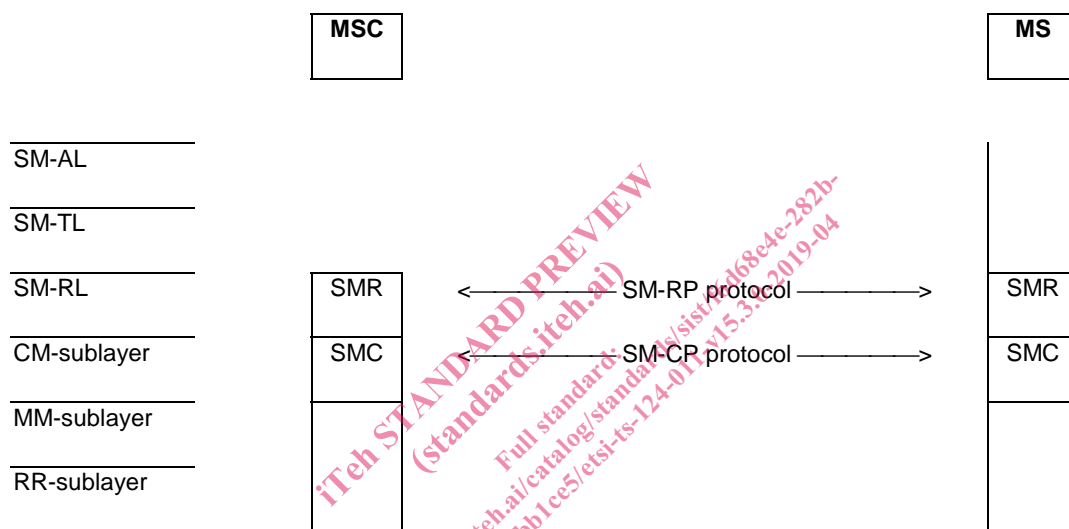


Figure 2.1a/3GPP TS 24.011: Protocol hierarchy for circuit-switched service

The hierarchical model in figure 2.1b shows the layer structure of the SGSN and the MS in A/Gb mode.

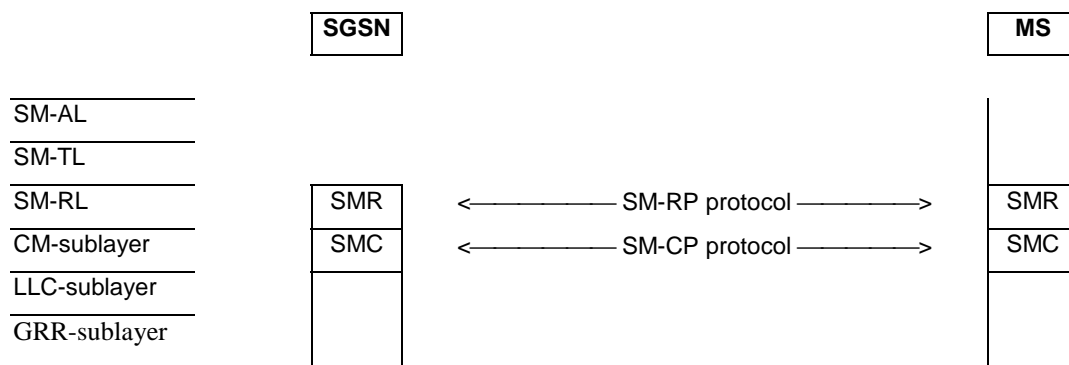


Figure 2.1b/3GPP TS 24.011: Protocol hierarchy for GPRS in A/Gb mode

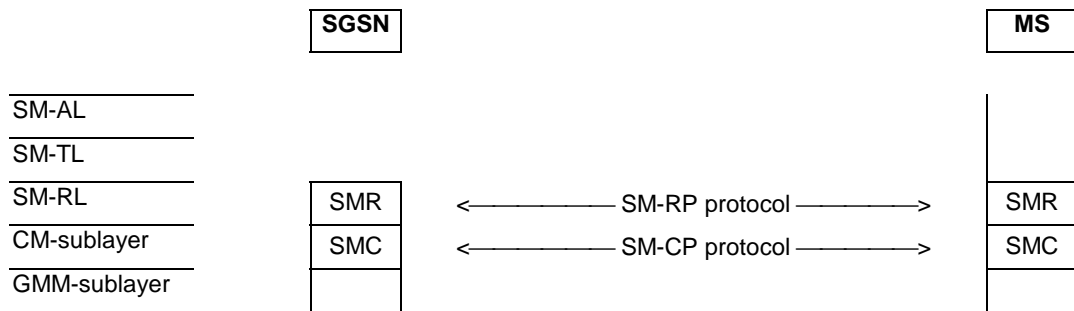
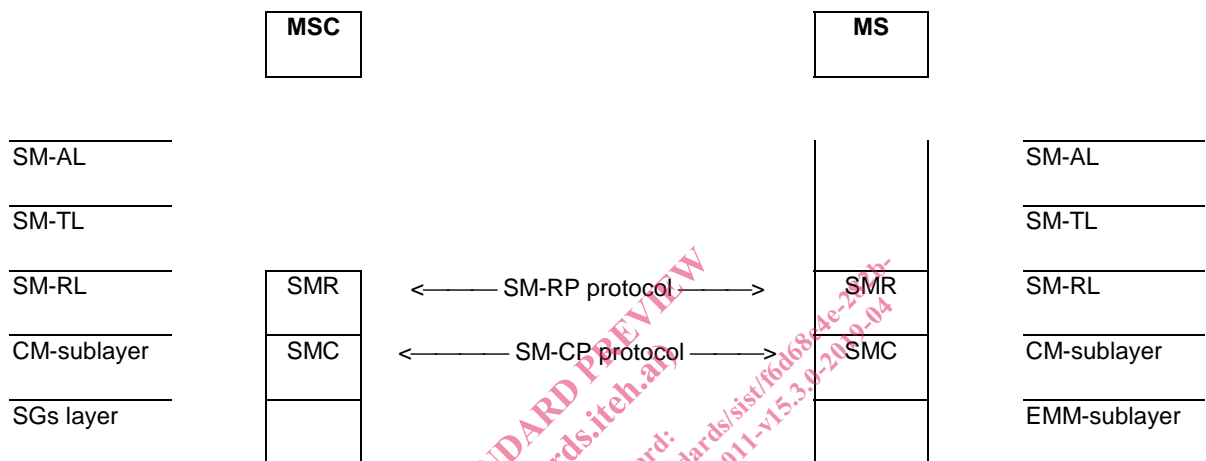


Figure 2.1c/3GPP TS 24.011: Protocol hierarchy for packet-switched service in Lu mode



NOTE: SM-CP messages are transferred between the MSC and the MS through the MME. The protocol stack on the MME is not shown.

Figure 2.1d/3GPP TS 24.011: Protocol hierarchy for circuit-switched service in S1 mode

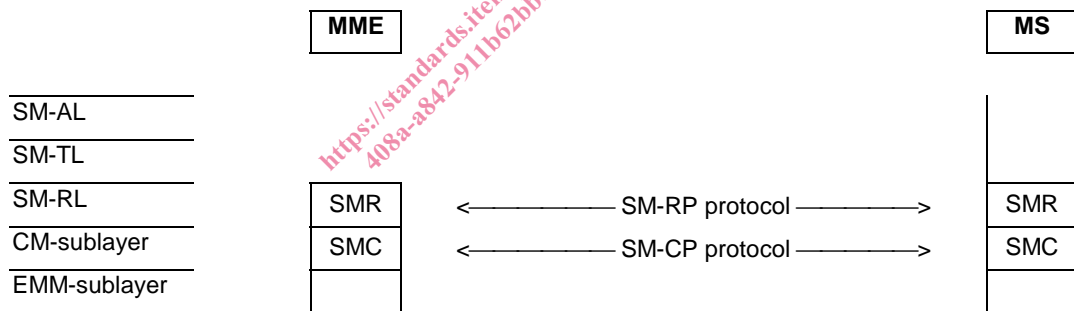
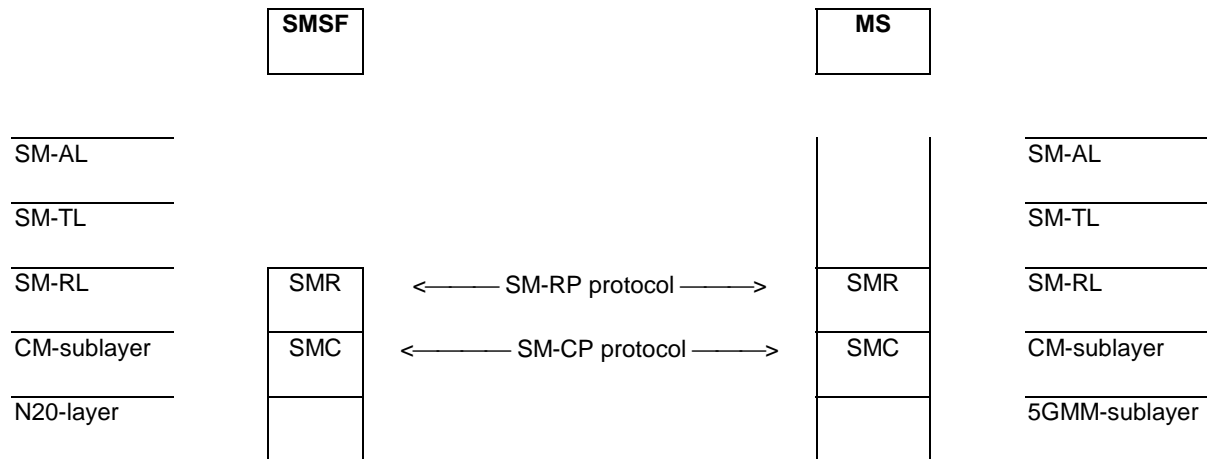


Figure 2.1e/3GPP TS 24.011: Protocol hierarchy for packet-switched service in S1 mode



NOTE: SM-CP messages are transferred between the SMSF and the MS through the AMF. The protocol stack on the AMF is not shown.

**Figure 2.1f/3GPP TS 24.011: Protocol hierarchy in N1 mode**

The CM-sublayer, in terms of the Short Message Service Support, provides services to the Short Message Relay Layer.

On the MS-side the Short Message Relay Layer provides services to the Short Message Transfer Layer. The Short Message Relay Layer is the upper layer on the network side (MSC or SGSN or MME), and the SM-user information elements are mapped to TCAP/MAP.

The peer protocol between two SMC entities is denoted SM-CP, and between two SMR entities, SM-RP.

Abbreviations:

- SM-AL Short Message Application Layer
- SM-TL Short Message Transfer Layer
- SM-RL Short Message Relay Layer
- SM-RP Short Message Relay Protocol
- SMR Short Message Relay (entity)
- CM-sub Connection Management sublayer
- SM-CP Short Message Control Protocol
- SMC Short Message Control (entity)
- MM-sub Mobility Management sublayer
- GMM-sub GPRS Mobility Management sublayer
- RR-sub Radio Resource Management sublayer
- LLC-sub Logical Link Control sublayer
- GRR-sub GPRS Radio Resource sublayer in GSM
- EMM-sub EPS Mobility Management sublayer
- 5GMM-sub 5G Mobility Management sublayer

## 2.2 Use of channels (A/Gb mode only)

Table 2.1/3GPP TS 24.011 summarizes the use of channels for the short message service for circuit switched in A/Gb mode. Arrows indicate changes of channel.

**Table 2.1/3GPP TS 24.011: Channels used for short message transfer over circuit switched in A/Gb mode**

Channel dependency	Channel used
TCH not allocated	SDCCH
TCH not allocated -> TCH allocated	SDCCH -> SACCH
TCH allocated	SACCH
TCH allocated -> TCH not allocated	SACCH -> SACCH opt. SDCCH <sup>3</sup>

The short message service for GPRS shall be supported by a PDTCH.