
**Textiles — Test method for assessing
the matting appearance of napped
fabrics after cleansing**

*Textiles — Méthode d'essai pour l'évaluation de l'aspect du
moutonnement des étoffes grattées après nettoyage*

iTeh STANDARD PREVIEW
(standards.iteh.ai)

[ISO 16847:2016](https://standards.iteh.ai/catalog/standards/sist/4c4bab18-c36d-403a-974e-24a78529adfa/iso-16847-2016)

[https://standards.iteh.ai/catalog/standards/sist/4c4bab18-c36d-403a-974e-
24a78529adfa/iso-16847-2016](https://standards.iteh.ai/catalog/standards/sist/4c4bab18-c36d-403a-974e-24a78529adfa/iso-16847-2016)



iTeh STANDARD PREVIEW
(standards.iteh.ai)

ISO 16847:2016

<https://standards.iteh.ai/catalog/standards/sist/4c4bab18-c36d-403a-974e-24a78529adfa/iso-16847-2016>



COPYRIGHT PROTECTED DOCUMENT

© ISO 2016, Published in Switzerland

All rights reserved. Unless otherwise specified, no part of this publication may be reproduced or utilized otherwise in any form or by any means, electronic or mechanical, including photocopying, or posting on the internet or an intranet, without prior written permission. Permission can be requested from either ISO at the address below or ISO's member body in the country of the requester.

ISO copyright office
Ch. de Blandonnet 8 • CP 401
CH-1214 Vernier, Geneva, Switzerland
Tel. +41 22 749 01 11
Fax +41 22 749 09 47
copyright@iso.org
www.iso.org

Contents

	Page
Foreword	iv
Introduction	v
1 Scope	1
2 Normative references	1
3 Terms and definitions	1
4 Principle	2
5 Apparatus	2
6 Test specimens	3
7 Procedure	3
8 Expression of results	4
9 Test report	4

iTeh STANDARD PREVIEW (standards.iteh.ai)

ISO 16847:2016

<https://standards.iteh.ai/catalog/standards/sist/4c4bab18-c36d-403a-974e-24a78529adfa/iso-16847-2016>

Foreword

ISO (the International Organization for Standardization) is a worldwide federation of national standards bodies (ISO member bodies). The work of preparing International Standards is normally carried out through ISO technical committees. Each member body interested in a subject for which a technical committee has been established has the right to be represented on that committee. International organizations, governmental and non-governmental, in liaison with ISO, also take part in the work. ISO collaborates closely with the International Electrotechnical Commission (IEC) on all matters of electrotechnical standardization.

The procedures used to develop this document and those intended for its further maintenance are described in the ISO/IEC Directives, Part 1. In particular the different approval criteria needed for the different types of ISO documents should be noted. This document was drafted in accordance with the editorial rules of the ISO/IEC Directives, Part 2 (see www.iso.org/directives).

Attention is drawn to the possibility that some of the elements of this document may be the subject of patent rights. ISO shall not be held responsible for identifying any or all such patent rights. Details of any patent rights identified during the development of the document will be in the Introduction and/or on the ISO list of patent declarations received (see www.iso.org/patents).

Any trade name used in this document is information given for the convenience of users and does not constitute an endorsement.

For an explanation on the meaning of ISO specific terms and expressions related to conformity assessment, as well as information about ISO's adherence to the World Trade Organization (WTO) principles in the Technical Barriers to Trade (TBT) see the following URL: www.iso.org/iso/foreword.html.

This document was prepared by Technical Committee ISO/TC 38, *Textiles*, Subcommittee SC 2, *Cleansing, finishing and water resistance tests*.

ISO 16847:2016

<https://standards.iteh.ai/catalog/standards/sist/4c4bab18-c36d-403a-974e-24a78529adfa/iso-16847-2016>

Introduction

With use, the surface of napped fabrics changes significantly. This change in appearance, known as matting, is more or less severe and is related to the fibre, fabric or finishing characteristics.

Based on the structure of other ISO standards dealing with the change in appearance after cleansing, this document has been elaborated to solve this situation.

iTeh STANDARD PREVIEW (standards.iteh.ai)

ISO 16847:2016

<https://standards.iteh.ai/catalog/standards/sist/4c4bab18-c36d-403a-974e-24a78529adfa/iso-16847-2016>

iTeh STANDARD PREVIEW (standards.iteh.ai)

ISO 16847:2016

<https://standards.iteh.ai/catalog/standards/sist/4c4bab18-c36d-403a-974e-24a78529adfa/iso-16847-2016>

Textiles — Test method for assessing the matting appearance of napped fabrics after cleansing

1 Scope

This document specifies a method for assessing the matting appearance of the napped fabrics (fleece fabrics) tested, after one or several cleansing treatments.

This method has been developed for use primarily with Type B domestic washing machines, as defined in ISO 6330, in the cleansing process. However, it is possible to use it with Type A machines, as defined in ISO 6330. This test method can be used for judging matting appearance after other cleansing processes.

2 Normative references

The following documents are referred to in the text in such a way that some or all of their content constitutes requirements of this document. For dated references, only the edition cited applies. For undated references, the latest edition of the referenced document (including any amendments) applies.

ISO 105-A03, *Textiles — Tests for colour fastness — Part A03: Grey scale for assessing staining*

ISO 139, *Textiles — Standard atmospheres for conditioning and testing*

ISO 3175 (all parts), *Textiles — Professional care, drycleaning and wetcleaning of fabrics and garments*

ISO 6330, *Textiles — Domestic washing and drying procedures for textile testing*

ISO 15797, *Textiles — Industrial washing and finishing procedures for testing of workwear*

3 Terms and definitions

For the purposes of this document, the following terms and definitions apply.

ISO and IEC maintain terminological databases for use in standardization at the following addresses:

- ISO Online browsing platform: available at <https://www.iso.org/obp/ui/>
- IEC Electropedia: available at <http://www.electropedia.org/>

3.1

matting

disorientation of the raised fibres of a napped fabric, which produces a visible surface change

Note 1 to entry: See Figure 1.

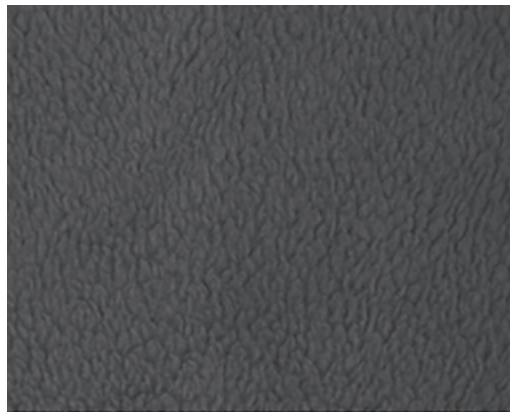


Figure 1 — Example of matting appearance of napped fabric

4 Principle

Fabric specimens are subjected to procedures simulating cleansing practices. One of the domestic washing and drying procedures specified in ISO 6330, one of the professional procedures specified in the series of ISO 3175 or one of the industrial procedures as specified in ISO 15797 is used, as agreed between the interested parties. If the interested parties decide that other cleansing processes are to be used, this fact shall be reported.

5 Apparatus

5.1 Washing and drying apparatus, as specified in ISO 6330, professional care apparatus, as specified in ISO 3175 or industrial laundering apparatus as specified in ISO 15797.

5.2 Lighting.

The evaluation area shall be a darkened room, using the overhead lighting arrangement shown in Figure 2 and comprising the following items. Lamp dimensions should be chosen to extend beyond the overall surface of a test specimen and replicas, when used for the assessment.

5.2.1 Two CW (cool white) fluorescent lamps, placed side by side, without baffle or glass, a minimum of 2 m in length each.

5.2.2 One white enamel reflector, without baffle or glass.

5.2.3 One specimen holder.

5.2.4 One thick plywood viewing board, painted grey to match the grade 2 on the grey scale for assessing staining specified in ISO 105-A03.

