

ETSI TS 128 531 V15.5.0 (2020-01)



5G;
Management and orchestration;
Provisioning
(3GPP TS 28.531 version 15.5.0 Release 15)

*iTeh STANDARD PREVIEW
(standards.iteh.ai)
Full standard: https://standards.iteh.ai/catalog/standards/sist/34c40a35-4e0f-464c-ad8e-9eba95975c54/etsi-ts-128-531-v15-5-0-2020-01*



ReferenceRTS/TSGS-0528531vf50

Keywords5G

ETSI

650 Route des Lucioles
F-06921 Sophia Antipolis Cedex - FRANCE

Tel.: +33 4 92 94 42 00 Fax: +33 4 93 65 47 16

Siret N° 348 623 562 00017 - NAF 742 C
Association à but non lucratif enregistrée à la
Sous-Préfecture de Grasse (06) N° 7803/88

Important notice

The present document can be downloaded from:
<http://www.etsi.org/standards-search>

The present document may be made available in electronic versions and/or in print. The content of any electronic and/or print versions of the present document shall not be modified without the prior written authorization of ETSI. In case of any existing or perceived difference in contents between such versions and/or in print, the prevailing version of an ETSI deliverable is the one made publicly available in PDF format at www.etsi.org/deliver.

Users of the present document should be aware that the document may be subject to revision or change of status. Information on the current status of this and other ETSI documents is available at <https://portal.etsi.org/TB/ETSIDeliverableStatus.aspx>

If you find errors in the present document, please send your comment to one of the following services:
<https://portal.etsi.org/People/CommiteeSupportStaff.aspx>

Copyright Notification

No part may be reproduced or utilized in any form or by any means, electronic or mechanical, including photocopying and microfilm except as authorized by written permission of ETSI.

The content of the PDF version shall not be modified without the written authorization of ETSI.

The copyright and the foregoing restriction extend to reproduction in all media.

© ETSI 2020.

All rights reserved.

DECT™, **PLUGTESTS™**, **UMTS™** and the ETSI logo are trademarks of ETSI registered for the benefit of its Members.

3GPP™ and **LTE™** are trademarks of ETSI registered for the benefit of its Members and of the 3GPP Organizational Partners.

oneM2M™ logo is a trademark of ETSI registered for the benefit of its Members and of the oneM2M Partners.

GSM® and the GSM logo are trademarks registered and owned by the GSM Association.

Intellectual Property Rights

Essential patents

IPRs essential or potentially essential to normative deliverables may have been declared to ETSI. The information pertaining to these essential IPRs, if any, is publicly available for **ETSI members and non-members**, and can be found in ETSI SR 000 314: "*Intellectual Property Rights (IPRs); Essential, or potentially Essential, IPRs notified to ETSI in respect of ETSI standards*", which is available from the ETSI Secretariat. Latest updates are available on the ETSI Web server (<https://ipr.etsi.org/>).

Pursuant to the ETSI IPR Policy, no investigation, including IPR searches, has been carried out by ETSI. No guarantee can be given as to the existence of other IPRs not referenced in ETSI SR 000 314 (or the updates on the ETSI Web server) which are, or may be, or may become, essential to the present document.

Trademarks

The present document may include trademarks and/or tradenames which are asserted and/or registered by their owners. ETSI claims no ownership of these except for any which are indicated as being the property of ETSI, and conveys no right to use or reproduce any trademark and/or tradename. Mention of those trademarks in the present document does not constitute an endorsement by ETSI of products, services or organizations associated with those trademarks.

Legal Notice

This Technical Specification (TS) has been produced by ETSI 3rd Generation Partnership Project (3GPP).

The present document may refer to technical specifications or reports using their 3GPP identities. These shall be interpreted as being references to the corresponding ETSI deliverables.

The cross reference between 3GPP and ETSI identities can be found under <http://webapp.etsi.org/key/queryform.asp>.

Modal verbs terminology

In the present document "**shall**", "**shall not**", "**should**", "**should not**", "**may**", "**need not**", "**will**", "**will not**", "**can**" and "**cannot**" are to be interpreted as described in clause 3.2 of the [ETSI Drafting Rules](#) (Verbal forms for the expression of provisions).

"**must**" and "**must not**" are **NOT** allowed in ETSI deliverables except when used in direct citation.

Contents

Intellectual Property Rights	2
Legal Notice	2
Modal verbs terminology.....	2
Foreword.....	6
1 Scope	7
2 References	7
3 Definitions and abbreviations.....	7
3.1 Definitions	7
3.2 Abbreviations	8
4 General	8
4.1 Overview	8
4.2 Configuration information for the constituents of an NSI.....	10
4.3 General information for network slice instance.....	10
4.4 General information for network slice subnet instance	11
4.5 General information for service profile	11
4.6 General information for network slice related identifiers.....	11
5 Specification level requirements	13
5.1 Use cases	13
5.1.1 Network slice instance creation	13
5.1.2 Network slice subnet instance creation.....	14
5.1.3 Network slice instance termination.....	16
5.1.4 Network slice subnet instance termination	17
5.1.5 Obtaining network slice subnet instance information.....	18
5.1.6 Network slice feasibility check.....	19
5.1.7 Network slice instance activation	20
5.1.8 Network slice instance deactivation.....	20
5.1.9 Network slice instance modification.....	21
5.1.10 Network slice subnet instance activation	22
5.1.11 Network slice subnet instance deactivation	23
5.1.12 Network slice subnet instance modification	24
5.1.13 Network slice subnet configuration	25
5.1.14 Exposure of network slice management data.....	25
5.1.15 Exposure of network slice management capability.....	26
5.1.16 Network slice subnet instance management capability exposure	26
5.1.17 Creation of a 3GPP NF	27
5.1.18 Configuration of a 3GPP NF instance.....	28
5.1.19 Creation of a 3GPP sub-network	29
5.1.20 Configuration of a 3GPP sub-network.....	30
5.1.21 Network slice subnet feasibility check.....	31
5.1.22 Network slice resource capacity planning	32
5.1.23 Network slice subnet management with assigned priority.....	33
5.1.24 Management interaction with NFV MANO for network service priority.....	33
5.2 Requirements.....	34
5.2.1 Requirements for network slice provisioning service	34
5.2.2 Requirements for network slice subnet provisioning service.....	34
5.2.3 Requirements for NF provisioning service	35
5.2.4 Requirements for sub-network provisioning service	35
6 Management services for provisioning of networks and network slicing	36
6.1 Management services for network slice provisioning	36
6.2 Management services for network slice subnet provisioning.....	39
6.3 Management services for network function provisioning	40
6.4 Management services for network and sub-network provisioning.....	41

6.5.	Operations of provisioning	42
6.5.1	AllocateNsi operation	42
6.5.1.1	Description	42
6.5.1.2	Input parameters	42
6.5.1.3	Output parameters	43
6.5.2	AllocateNssi operation	43
6.5.2.1	Description	43
6.5.2.2	Input parameters	43
6.5.2.3	Output parameters	43
6.5.3	DeallocateNsi operation	43
6.5.3.1	Description	43
6.5.3.2	Input parameters	43
6.5.3.3	Output parameters	44
6.5.4	DeallocateNssi operation	44
6.5.4.1	Description	44
6.5.4.2	Input parameters	44
6.5.4.3	Output parameters	44
6.5.5	AllocateNetwork operation	44
6.5.5.1	Description	44
6.5.5.2	Input parameters	44
6.5.5.3	Output parameters	44
7	Provisioning procedures of networks and network slicing	45
7.1	General	45
7.2	Procedure of Network Slice Instance Allocation	45
7.3	Procedure of Network Slice Subnet Instance Allocation	46
7.4	Procedure of Network Slice Instance Deallocation	48
7.5	Procedure of Network Slice Subnet Instance Deallocation	49
7.6	Procedure of Network Slice Instance Modification	51
7.7	Procedure of Network Slice Subnet Instance Modification	52
7.8	Procedure of Obtaining Network Slice Subnet Capability	53
7.8.1	Introduction	53
7.8.2	Querying Network Slice Subnet Capability Information	53
7.8.3	Notify Network Slice Subnet Capability Information	54
7.9	Procedure of TN coordination supporting network slicing	54
7.9.1	Introduction	54
7.9.2	Interaction with NFVO as TN Manager	54
7.10	Procedure of NF instance creation	55
7.11	Procedure of NF instance modification	57
7.12	Procedure of NF instance deletion	57
7.13	Procedure of reservation and checking feasibility of NSI	58
7.14	Procedure of reservation and checking feasibility of network slice subnet	59
7.15	Procedure of network slice capacity planning	60
7.16	Procedure of allocating network with or without slicing for communication services	62
8	RESTful HTTP-based solution set of provisioning	63
8.1	Mapping of operations	63
8.1.1	Introduction	63
8.1.2	Operation AllocateNsi	63
8.1.3	Operation AllocateNssi	63
8.1.4	Operation DeallocateNsi	64
8.1.5	Operation DeallocateNssi	64
8.1.6	Operation AllocateNetwork	64
8.2	Resources	65
8.2.1	Resource definitions	65
8.2.1.1	Resource ObjectManagement/NS/ServiceProfiles	65
8.2.1.1.1	Description	65
8.2.1.1.2	URI	65
8.2.1.1.3	HTTP methods	65
8.2.1.2	Resource ObjectManagement/NSS/SliceProfiles	66
8.2.1.2.1	Description	66
8.2.1.2.2	URI	66

8.2.1.2.3 HTTP methods66
8.2.1.3 Resource ObjectManagement/ServiceProfiles67
8.2.1.3.1 Description67
8.2.1.3.2 URI67
8.2.1.3.3 HTTP methods67
Annex A (informative): Change history68
History69

iTeh STANDARD PREVIEW
(standards.iteh.ai)
Full standard:
<https://standards.iteh.ai/catalog/standards/sist/34c40a35-4e0f-464c-ad8e-9eba95975c54/etsi-ts-128-531-v15.5.0-2020-01>

Foreword

This Technical Specification has been produced by the 3rd Generation Partnership Project (3GPP).

The contents of the present document are subject to continuing work within the TSG and may change following formal TSG approval. Should the TSG modify the contents of the present document, it will be re-released by the TSG with an identifying change of release date and an increase in version number as follows:

Version x.y.z

where:

- x the first digit:
 - 1 presented to TSG for information;
 - 2 presented to TSG for approval;
 - 3 or greater indicates TSG approved document under change control.
- y the second digit is incremented for all changes of substance, i.e. technical enhancements, corrections, updates, etc.
- z the third digit is incremented when editorial only changes have been incorporated in the document.

PREVIEW
STANDARD
ETSI
(standards.iteh.ai)
Full standard:
<https://standards.iteh.ai/catalog/standards/sist/34c40a35-4e0f-464c-ad8e-9eba95975c54/etsi-ts-128-531-v15.5.0-2020-01>

1 Scope

The present document specifies use cases, requirements, management services and procedures for provisioning of 5G networks.

2 References

The following documents contain provisions which, through reference in this text, constitute provisions of the present document.

- References are either specific (identified by date of publication, edition number, version number, etc.) or non-specific.
- For a specific reference, subsequent revisions do not apply.
- For a non-specific reference, the latest version applies. In the case of a reference to a 3GPP document (including a GSM document), a non-specific reference implicitly refers to the latest version of that document *in the same Release as the present document*.

- [1] 3GPP TR 21.905: "Vocabulary for 3GPP Specifications".
- [2] 3GPP TS 28.525: "Telecommunication management; Life Cycle Management (LCM) for mobile networks that include virtualized network functions; Requirements".
- [3] ETSI GS NFV-IFA 013 (V2.4.1) (2018-02): "Network Function Virtualisation (NFV); Release 2; Management and Orchestration; Os-Ma-nfvo reference point - Interface and Information Model Specification".
- [4] 3GPP TS 28.530: "Management and orchestration; Concepts, use cases and requirements".
- [5] 3GPP TS 22.261 "Service requirements for next generation new services and markets".
- [6] 3GPP TS 28.541: "Management and orchestration; 5G Network Resource Model (NRM); Stage 2 and stage 3".
- [7] 3GPP TS 28.526: "Life Cycle Management (LCM) for mobile networks that include virtualized network functions; Procedures".
- [8] 3GPP TS 28.532: "Management and orchestration; Generic management services".
- [9] 3GPP TS 23.501: "Technical Specification Group Services and System Aspects;System Architecture for the 5G System;Stage 2".
- [10] 3GPP TS 38.300: "Technical Specification Group Radio Access Network;NR; NR and NG-RAN Overall Description;Stage 2".

3 Definitions and abbreviations

3.1 Definitions

For the purposes of the present document, the terms and definitions given in TR 21.905 [1], TS 28.530 [4] and the following apply. A term defined in the present document takes precedence over the definition of the same term, if any, in TR 21.905 [1] and TS 28.530 [4].

3.2 Abbreviations

For the purposes of the present document, the abbreviations given in TR 21.905 [1], TS 28.530 [4] and the following apply. An abbreviation defined in the present document takes precedence over the definition of the same abbreviation, if any, in TR 21.905 [1].

5GC	5G Core Network
AMF	Access and Mobility Management Function
CSC	Communication Service Customer
CSMF	Communication Service Management Function
CSP	Communication Service Provider
CP	Control Plane
IOC	Information Object Class
MANO	Management and Orchestration
MnS	Management Service
NF	Network Function
NFV	Network Functions Virtualisation
NRM	Network Resource Model
NSaaS	Network Slice as a Service
NSI	Network Slice Instance
NSMF	Network Slice Management Function
NSSI	Network Slice Subnet Instance
NSSMF	Network Slice Subnet Management Function
TN	Transport Network
VNF	Virtualized Network Function
UP	User Plane

4 General

4.1 Overview

5G system consists of 5G Access Network (AN) 5G Core Network (5GC). Network slicing is one of 5G key features.

The management aspects of a Network Slice Instance (NSI) are described by the four phases shown in Figure 4.3.1.1 of TS 28.530 [4].

The provisioning of network slicing includes the four phases which are preparation, commissioning, operation and decommissioning:

- In the preparation phase the NSI does not exist. The preparation phase includes network slice design, onboarding, evaluation of the network slice requirements, preparing the network environment and other necessary preparations required to be done before the creation of an NSI.
- During the NSI lifecycle stage which include commissioning phase, operation phase and decommissioning phase, the NSI provisioning operations include:
 - Create an NSI;
 - Activate an NSI;
 - De-active an NSI;
 - Modify an NSI;
 - Terminate an NSI.

The operations of the provisioning of an NSI occurs during different phases of a NSI:

- a) During the commissioning phase:

- Create an NSI.

During NSI creation all resources to the NSI have been created and configured to satisfy the network slice requirements. NSI creation may trigger NSSI(s) creation or using existing NSSI(s) and setting up the corresponding associations.

b) During the operation phase:

- Activate an NSI;
- Modify an NSI;
- De-active an NSI.

NSI activation includes any actions that make the NSI active to provide communication services. NSI activation may trigger NSSI activation.

NSI modification in operation phase could map to several workflows, e.g. changes of NSI capacity, changes of NSI topology, NSI reconfiguration. NSI modification can be triggered by receiving new network slice related requirements, new communication service requirements, or the result of NSI supervision automatically. NSI modification may trigger NSSI modification.

The NSI deactivation operation may be needed before NSI modification operation and the NSI activation operation may be needed after the NSI modification operation. NSI deactivation includes any actions that make the NSI inactive and not providing any communication services. NSI deactivation trigger NSSI deactivation to deactivate constituent NSSI(s) which is not used by other NSI(s). Operator may decide to keep the NSI without termination after deactivation and reactivate it when receives new communication service request.

c) During the decommissioning phase:

- Terminate an NSI.

NSI termination step includes any action that make the NSI does not exist anymore and release resources that are not used by other NSI(s). NSI termination may trigger NSSI termination to terminate constituent NSSI(s) which is not used by other NSI(s).

Similarly, provisioning for network slice subnet instance includes the following operations:

- Create an NSSI;
- Activate an NSSI and associate it with certain NSI to be used by the NSI;
- Disassociate the NSSI with certain NSI and de-active the NSSI if it's not associated with any NSI;
- Modify an NSSI;
- Terminate an NSSI.

The following are NSSI states:

NSSI_NULL – the NSSI does not exist

NSSI_NOT_IN_USE – the NSSI exists, but is not used by (associated with) any NSI or NSSI

NSSI_IN_USE – the NSSI is used by (associated with) at least one NSI or at least one NSSI

The following is the state diagram:

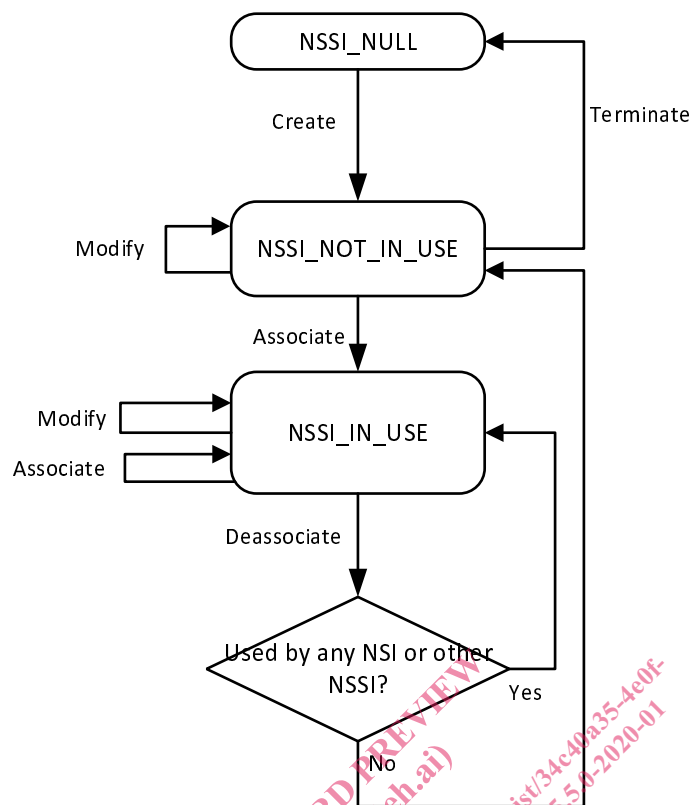


Figure 4.1-1

4.2 Configuration information for the constituents of an NSI

To use network slice to support communication service or deliver a network slice as a service, the 3GPP defined constituents of the NSI should be configured by 3GPP management system according to the types and requirements of the network slice so that the NSI can be operated and maintained.

The configuration information of these components may include:

- *Information on the requirements to be applied to every NSI constituent to satisfy the requirements of multiple NSIs* if the constituent is shared by multiple NSIs;
- *Network function selection information*: Information on the selection of the NFs (e.g., AMF) according to the requirements of this NSI;
- *Connection information*: The information of the logical links to carry the NSI's CP and UP data between the component and other NFs and NSSIs belonging to the NSI.

NOTE 1: The list of information above is not exhaustive.

NOTE 2: The list of information above is not all necessary for an NSI.

4.3 General information for network slice instance

The general information used to describe network slice instance may include:

- *Resource model information*, which describes the static parameters and functional components of network slice, includes service profile, network slice type (e.g. eMBB), additional system feature (e.g. multicast, Edge Computing), priority.

- Management model information, which describes the information model that is used for network slice lifecycle management, includes configuration profile (e.g. application configuration parameters).
- Capability model information, which describes the capability including supported communication service characteristic information (e.g. service type, UE mobility level, density of users, traffic density), QoS attributes (e.g. bandwidth, latency, throughput and so on) and capacity (e.g. maximum number of UEs), can be exposed to CSC via CSMF.

4.4 General information for network slice subnet instance

The general information used to describe network slice subnet instance may include:

- Resource model information, which describes the static parameters and functional component of network slice subnet, includes slice profile, network slice subnet type (e.g. RAN eMBB, CN eMBB), additional system feature (e.g. multicast, Edge Computing), priority, QoS attributes (e.g. bandwidth, latency, number of subscribers and so on), NSD ID.
- Management model information, which describes the information model that is used for network slice subnet lifecycle management, includes configuration profile (e.g. application configuration parameters).
- Capability model information, which describes the capability including supported communication service characteristic information (e.g. service type, UE mobility level, density of users, traffic density), QoS attributes (e.g. bandwidth, latency, throughput and so on) and capacity (e.g. maximum number of UEs).

4.5 General information for service profile

Depending on industry requirements and operator's design requirements, different service profiles may be used to represent SLS associated with instances of Network Slice IOC.

The following are examples for service profile:

- A service profile is used to capture a set of requirements for the new network slice instance such as (i.e. eMBB, MIoT, URLLC).
- A service profile is used to capture a set of specific industry requirements for creation of network slice instance such as (e.g. V2X, smart grid, Remote Healthcare).

4.6 General information for network slice related identifiers

There are following network slice related identifiers which serve different purposes:

Identifier	Description
Identifiers for network slice management purpose	
NetworkSlice identifier	Represent the management identifier of network slice instance. Management identifier of network slice instance is defined in TS 28.541[6] as objectinstance attribute of NetworkSlice IOC.
NetworkSliceSubnet identifier	Represent the management identifier for a network slice subnet instance. Management identifier of network slice subnet instance is defined in TS 28.541[6] as objectinstance attribute of NetworkSliceSubnet IOC.
Identifiers for network slice selection purpose	
NSI ID	Represent Core Network part of a Network Slice instance when multiple Network Slice instances of the same Network Slice are deployed, and there is a need to differentiate between them in the 5GC. Referred to TS 23.501[9].
S-NSSAI	Represent network slice. Referred to TS 23.501[9] and TS 38.300[10].

PLMN ID	Represent PLMN identifier.
---------	----------------------------

The NSI ID and S-NSSAI are configured by the management system.

iTeh STANDARD PREVIEW
(standards.iteh.ai)
Full standard:
<https://standards.iteh.ai/catalog/standards/sist/34c40a35-4e0f-464c-ad8e-9eba95975c54/etsi-ts-128-531-v15.5.0-2020-01>