



**SLOVENSKI STANDARD**  
**oSIST prEN ISO 20345:2020**  
**01-junij-2020**

---

**Osebna varovalna oprema - Zaščitna obutev (ISO/DIS 20345:2020)**

Personal protective equipment - Safety footwear (ISO/DIS 20345:2020)

Persönliche Schutzausrüstung - Sicherheitsschuhe (ISO/DIS 20345:2020)

Équipement de protection individuelle - Chaussures de sécurité (ISO/DIS 20345:2020)

**Ta slovenski standard je istoveten z: prEN ISO 20345**

[oSIST prEN ISO 20345:2020](https://standards.iteh.ai/catalog/standards/sist/0fe34ce-80a9-418a-9bed-25173cd773d/osist-pren-iso-20345-2020)

<https://standards.iteh.ai/catalog/standards/sist/0fe34ce-80a9-418a-9bed-25173cd773d/osist-pren-iso-20345-2020>

**ICS:**

13.340.50      Varovanje nog in stopal      Leg and foot protection

**oSIST prEN ISO 20345:2020**      **en**

**iTeh STANDARD PREVIEW**  
**(standards.iteh.ai)**

[oSIST prEN ISO 20345:2020](#)

<https://standards.iteh.ai/catalog/standards/sist/0fef34ce-80a9-418a-9bed-2517f3cd773d/osist-pren-iso-20345-2020>

# DRAFT INTERNATIONAL STANDARD

## ISO/DIS 20345

ISO/TC 94/SC 3

Secretariat: **BSI**Voting begins on:  
**2020-04-13**Voting terminates on:  
**2020-07-06**

---

---

## Personal protective equipment — Safety footwear

*Équipement de protection individuelle — Chaussures de sécurité*

ICS: 13.340.50

### iTeh STANDARD PREVIEW (standards.iteh.ai)

[oSIST prEN ISO 20345:2020](https://standards.iteh.ai/catalog/standards/sist/0fef34ce-80a9-418a-9bed-2517f3cd773d/osist-pren-iso-20345-2020)<https://standards.iteh.ai/catalog/standards/sist/0fef34ce-80a9-418a-9bed-2517f3cd773d/osist-pren-iso-20345-2020>

THIS DOCUMENT IS A DRAFT CIRCULATED FOR COMMENT AND APPROVAL. IT IS THEREFORE SUBJECT TO CHANGE AND MAY NOT BE REFERRED TO AS AN INTERNATIONAL STANDARD UNTIL PUBLISHED AS SUCH.

IN ADDITION TO THEIR EVALUATION AS BEING ACCEPTABLE FOR INDUSTRIAL, TECHNOLOGICAL, COMMERCIAL AND USER PURPOSES, DRAFT INTERNATIONAL STANDARDS MAY ON OCCASION HAVE TO BE CONSIDERED IN THE LIGHT OF THEIR POTENTIAL TO BECOME STANDARDS TO WHICH REFERENCE MAY BE MADE IN NATIONAL REGULATIONS.

RECIPIENTS OF THIS DRAFT ARE INVITED TO SUBMIT, WITH THEIR COMMENTS, NOTIFICATION OF ANY RELEVANT PATENT RIGHTS OF WHICH THEY ARE AWARE AND TO PROVIDE SUPPORTING DOCUMENTATION.

This document is circulated as received from the committee secretariat.

**ISO/CEN PARALLEL PROCESSING**



Reference number  
ISO/DIS 20345:2020(E)

© ISO 2020

## iTeh STANDARD PREVIEW (standards.iteh.ai)

[oSIST prEN ISO 20345:2020  
https://standards.iteh.ai/catalog/standards/sist/0fef34ce-80a9-418a-9bed-2517f3cd773d/osist-pren-iso-20345-2020](https://standards.iteh.ai/catalog/standards/sist/0fef34ce-80a9-418a-9bed-2517f3cd773d/osist-pren-iso-20345-2020)



### **COPYRIGHT PROTECTED DOCUMENT**

© ISO 2020

All rights reserved. Unless otherwise specified, or required in the context of its implementation, no part of this publication may be reproduced or utilized otherwise in any form or by any means, electronic or mechanical, including photocopying, or posting on the internet or an intranet, without prior written permission. Permission can be requested from either ISO at the address below or ISO's member body in the country of the requester.

ISO copyright office  
CP 401 • Ch. de Blandonnet 8  
CH-1214 Vernier, Geneva  
Phone: +41 22 749 01 11  
Fax: +41 22 749 09 47  
Email: [copyright@iso.org](mailto:copyright@iso.org)  
Website: [www.iso.org](http://www.iso.org)

Published in Switzerland

# Contents

	Page
Foreword .....	v
<b>1 Scope .....</b>	<b>1</b>
<b>2 Normative references .....</b>	<b>1</b>
<b>3 Terms and definitions .....</b>	<b>1</b>
<b>4 Classification and designs .....</b>	<b>8</b>
<b>5 Basic requirements for safety footwear .....</b>	<b>9</b>
5.1 General .....	9
5.2 Design .....	12
5.2.1 General .....	12
5.2.2 Height of upper .....	12
5.2.3 Heel area .....	12
5.3 Whole footwear .....	12
5.3.1 Manufacturing performance .....	12
5.3.2 Toe protection .....	13
5.3.3 Leakproofness .....	14
5.3.4 Specific ergonomic features .....	14
5.3.5 Slip resistance .....	14
5.3.6 Innocuousness .....	15
5.3.7 Seam Strength .....	15
5.4 Upper .....	15
5.4.1 General .....	15
5.4.2 Thickness .....	16
5.4.3 Tear strength .....	17
5.4.4 Tensile properties .....	17
5.4.5 Flexing resistance .....	17
5.4.6 Water vapour permeability and coefficient .....	17
5.4.7 pH value .....	18
5.4.8 Hydrolysis .....	18
5.4.9 Chromium VI content .....	18
5.5 Lining .....	18
5.5.1 Tear strength .....	18
5.5.2 Abrasion resistance .....	18
5.5.3 Water vapour permeability and coefficient .....	18
5.5.4 pH value .....	19
5.5.5 Chromium VI content .....	19
5.6 Tongue .....	19
5.6.1 Tear strength .....	19
5.6.2 pH value .....	19
5.6.3 Chromium VI content .....	19
5.7 Insole and insock .....	19
5.7.1 Thickness .....	19
5.7.2 pH value .....	19
5.7.3 Water permeability .....	19
5.7.4 Water absorption and desorption .....	20
5.7.5 Abrasion resistance .....	20
5.7.6 Chromium VI content .....	20
5.8 Outsole .....	20
5.8.1 Design .....	20
5.8.2 Tear strength .....	21
5.8.3 Abrasion resistance .....	21
5.8.4 Flexing resistance .....	21
5.8.5 Hydrolysis .....	21
5.8.6 Interlayer bond strength .....	21

ISO/DIS 20345:2020(E)

<b>6</b>	<b>Additional requirements for safety footwear</b> .....	<b>22</b>
6.1	General .....	22
6.2	Whole footwear .....	22
6.2.1	Perforation resistance .....	22
6.2.2	Electrical properties .....	24
6.2.3	Resistance to inimical environments .....	25
6.2.4	Energy absorption of seat region .....	25
6.2.5	Water resistance .....	25
6.2.6	Metatarsal protection .....	25
6.2.7	Ankle protection .....	26
6.2.8	Cut resistance .....	26
6.2.9	Scuff caps .....	27
6.2.10	Slip resistance .....	27
6.3	Upper — Water penetration and absorption .....	27
6.4	Outsole .....	28
6.4.1	Resistance to hot contact .....	28
6.4.2	Resistance to fuel oil .....	28
6.4.3	Ladder Grip .....	28
<b>7</b>	<b>Marking</b> .....	<b>28</b>
<b>8</b>	<b>Information to be supplied</b> .....	<b>29</b>
8.1	General .....	29
8.2	Electrical properties .....	30
8.2.1	Dissipative footwear .....	30
8.2.2	Antistatic footwear .....	30
8.3	Insocks .....	31
8.4	Perforation resistance .....	31
8.5	Obsolescence deadline .....	32
<b>Annex A</b>	<b>(normative) Customized safety footwear (adapted to fit an individual user or a single unit to fit an individual user)</b> .....	<b>33</b>
<b>Annex B</b>	<b>(informative) Assessment of the footwear by the wearer</b> .....	<b>37</b>
<b>Annex C</b>	<b>(informative) Slip Resistance</b> .....	<b>39</b>
<b>Annex ZA</b>	<b>(informative) Relationship between this European Standard and the essential requirements of PPE Regulation 2016/425 aimed to be covered</b> .....	<b>42</b>
<b>Bibliography</b>	.....	<b>44</b>

ITih STANDARD PREVIEW

(standards.iteh.ai)

oSIST prEN ISO 20345:2020  
<https://standards.iteh.ai/catalog/standards/sist/0fef34ce-80a9-418a-9bed-2517f3cd773d/osist-pren-iso-20345-2020>

## Foreword

ISO (the International Organization for Standardization) is a worldwide federation of national standards bodies (ISO member bodies). The work of preparing International Standards is normally carried out through ISO technical committees. Each member body interested in a subject for which a technical committee has been established has the right to be represented on that committee. International organizations, governmental and non-governmental, in liaison with ISO, also take part in the work. ISO collaborates closely with the International Electrotechnical Commission (IEC) on all matters of electrotechnical standardization.

The procedures used to develop this document and those intended for its further maintenance are described in the ISO/IEC Directives, Part 1. In particular, the different approval criteria needed for the different types of ISO documents should be noted. This document was drafted in accordance with the editorial rules of the ISO/IEC Directives, Part 2 (see [www.iso.org/directives](http://www.iso.org/directives)).

Attention is drawn to the possibility that some of the elements of this document may be the subject of patent rights. ISO shall not be held responsible for identifying any or all such patent rights. Details of any patent rights identified during the development of the document will be in the Introduction and/or on the ISO list of patent declarations received (see [www.iso.org/patents](http://www.iso.org/patents)).

Any trade name used in this document is information given for the convenience of users and does not constitute an endorsement.

For an explanation of the voluntary nature of standards, the meaning of ISO specific terms and expressions related to conformity assessment, as well as information about ISO's adherence to the World Trade Organization (WTO) principles in the Technical Barriers to Trade (TBT), see [www.iso.org/iso/foreword.html](http://www.iso.org/iso/foreword.html).

ISO 20345 was prepared by the European Committee for Standardization (CEN) Technical Committee CEN/TC 161, *Foot and leg protectors*, in collaboration with Technical Committee ISO/TC 94, *Personal safety — Protective clothing and equipment*, Subcommittee SC 3, *Foot protection*, in accordance with the Agreement on technical cooperation between ISO and CEN (Vienna Agreement).

This third edition cancels and replaces the second edition (ISO 20345:2011), which has been technically revised.

Changes between this edition and the 2011 version are as follows:

- revision of terms (3.);
- [Figure 1](#) to Figure 4 revised;
- [Table 1](#), [Table 2](#) and [Table 3](#) revised;
- heel area defined ([5.2.3](#));
- toe protection, depending on ISO 22568-1 and ISO 22568-2, exchanging EN 12568:2010;
- requirement on slip resistance revised ([5.3.5](#) and [6.2.10](#)); marking “SR” introduced;
- requirement for seam strength of hybrid footwear added ([5.3.7](#));
- requirement for upper materials not fulfilling WVP explained ([5.4.6](#));
- abrasion of insoles revised ([5.7.5](#));
- outsole requirements revised ([5.8](#));
- outsole thickness revised ([5.8.1.1](#));
- flexing resistance of outsole clarified ([5.8.4](#));

**ISO/DIS 20345:2020(E)**

- perforation resistant insert, depending on ISO 22568-3 and ISO 22568-4, exchanging EN 12568:2010;
- tolerance added ([6.2.3.1](#));
- former [Annex A](#) Hybrid Footwear included in the general text ([Table 2](#), 6.2.5.2, [Table 16](#));
- optional requirement of metatarsal protection revised ([6.2.6](#));
- optional requirement on ankle protection clarified ([6.2.7](#));
- optional requirement for “SC” scuff caps added ([6.2.9](#));
- optional requirement for “LG” Ladder grip of outsoles added ([6.4.3](#));
- marking revised ([Table 16](#) and [Table 21](#));
- information on obsolescence date added ([8.5](#));
- normative [Annex A](#) with requirements for customized safety footwear added;
- informative [Annex B](#) assessment of the footwear by the wearer added;
- informative [Annex C](#) Slip resistance added;
- requirement for electrically insulating footwear (EN 50321) deleted;
- [Annex ZA](#) revised.

Any feedback or questions on this document should be directed to the user's national standards body. A complete listing of these bodies can be found at [www.iso.org/members.html](http://www.iso.org/members.html).

iTeh STANDARD PREVIEW  
(standards.iteh.ai)  
oSIST prEN ISO 20345:2020  
<https://standards.iteh.ai/catalog/standards/sist/0fef34ce-80a9-418a-9bed-2517f3cd773d/osist-pren-iso-20345-2020>



# Personal protective equipment — Safety footwear

## 1 Scope

This International Standard specifies basic and additional (optional) requirements for safety footwear used for general purpose. It includes, for example, mechanical risks, slip resistance, thermal risks, ergonomic behaviour. It also specifies requirements for orthopaedic customized or individual manufactured orthopaedic safety footwear. This standard does not cover the property of high visibility because of interaction with the clothing (e.g. trousers cover the footwear) and work area conditions (e.g. dirt, mud).

Special risks are covered by complementary job-related standards (e.g. footwear for firefighters, electrical insulating footwear, protection against chain saw injuries, protection against chemicals and molten metal splash, protection for motorcycle riders).

## 2 Normative references

The following documents are referred to in the text in such a way that some or all of their content constitutes requirements of this document. For dated references, only the edition cited applies. For undated references, the latest edition of the referenced document (including any amendments) applies.

ISO 20344:2021, *Personal protective equipment — Test methods for footwear*

ISO 22568-1:2019, *Foot and leg protectors — Requirements and test methods for footwear components — Part 1: Metallic toecaps*

ISO 22568-2:2019, *Foot and leg protectors — Requirements and test methods for footwear component — Part 2: Non-metallic toecaps*

ISO 22568-3:2019, *Foot and leg protectors — Requirements and test methods for footwear components — Part 3: Metallic perforation resistant inserts*

ISO 22568-4:2019, *Foot and leg protectors — Requirements and test methods for footwear components — Part 4: Non-metallic perforation resistant inserts*

ISO 21064:2017, *Prosthetics and orthotics — Foot orthotics — Uses, functions classification and description*

## 3 Terms and definitions

For the purposes of this document, the following terms and definitions apply.

Note 1 to entry The component parts of footwear are illustrated in [Figure 1](#), [Figure 2](#) and [Figure 3](#).

Note 2 to entry Further terms and definitions can be found in ISO 19952:2005.

ISO and IEC maintain terminological databases for use in standardization at the following addresses:

- ISO Online browsing platform: available at <https://www.iso.org/obp>
- IEC Electropedia: available at <http://www.electropedia.org/>

**ISO/DIS 20345:2020(E)**

**3.1 safety footwear**  
footwear incorporating safety features to protect the wearer from injuries that could arise through accidents

Note 1 to entry: Items of safety footwear are fitted with toecaps designed to give protection against impact of at least 200 J and against compression at least 15 kN.

**3.2 upper**  
part or parts of a footwear that cover the toes, the top of the foot, the sides of the foot, and optionally the back of the heel; it is attached to the outsole of a footwear

**3.3 leather**  
hide or skin tanned to be imperishable

**3.3.1 leather split**  
flesh or middle part of a hide or skin, obtained by splitting a thick leather, which is tanned to be imperishable

**3.4 rubber**  
vulcanized elastomers

**3.5 polymeric materials**  
large molecules composed of repeating structural units (monomers) typically connected by chemical bond

EXAMPLE Polyurethane (PU) or polyvinylchloride (PVC)

<https://standards.iteh.ai/catalog/standards/sist/0fef34ce-80a9-418a-9bed-2517f3cd773d/osist-pren-iso-20345-2020>

**3.6 insole**  
non-removable component used to form the base of the shoe to which the upper is usually attached during lasting

**3.7 insock**  
removable or non-removable footwear component used to cover completely the insole

**3.7.1 seat sock**  
removable or non-removable footwear component used to cover the insole in the heel area footbed

**3.7.2 footbed**  
removable or non-removable footwear component used to cover completely the insole; shaped according to the sole of the foot

Note 1 to entry: "Non-removable" means that the component cannot be removed without any damage.

Note 2 to entry: "Removable" means, that the component can be removed, but it must be placed in the footwear while wearing to maintain all safety features.

**3.8 lining**  
material covering the inner surface of the upper

Note 1 to entry: The wearer's foot is in direct contact with the lining.

Note 2 to entry: Where an upper is split at the forepart to house the toecap, or if an external piece of material is stitched to the upper to form a pocket to house the toecap, the material under the toecap acts as a lining.

### 3.9

#### **cleat**

protruding part of the outer surface of the outsole

### 3.10

#### **rigid outsole**

outsole, which cannot be bent through an angle of 45° under a load of 30 N

### 3.11

#### **perforation-resistant insert**

Component, placed in the outsole complex or used as an insole simultaneously in order to provide protection against perforation

### 3.12

#### **safety toecap**

component, placed in the footwear to protect the toes of the wearer from impacts and compression

### 3.13

#### **scuff caps**

abrasion resistant material or component to protect against scuff of the upper external toe region

### 3.14

#### **heel area**

counter (stiffener) area, rear part of the footwear

### 3.15

#### **dissipative footwear**

footwear with low resistance between the wearer and the ground, able to dissipate some static electricity

<https://standards.iteh.ai/catalog/standards/sist/0fef34ce-80a9-418a-9bed-2517f3cd773d/osist-pren-iso-20345-2020>

### 3.16

#### **antistatic footwear**

Footwear maintaining some resistance between the wearer and the ground, able to dissipate some static electricity

### 3.17

#### **fuel oil**

aliphatic hydrocarbon constituent of petroleum

### 3.18

#### **specific job-related footwear**

safety footwear relating to a specific profession

EXAMPLE Footwear for firefighters; footwear with resistance to chain saw cutting.

### 3.19

#### **customized safety footwear**

(adapted to fit an individual user or a single unit to fit an individual user)

covering all individual orthotic footwear according to ISO 21064:2017, 3.2 and other specific conditions of a foot. They integrate in their design the recipient's own physiognomy and the specific arrangements aimed at modifying, correcting, compensating, curing, preventing, relieving a pathology, e.g. overweight, diabetes, hyperhidrosis ...

## ISO/DIS 20345:2020(E)

Several types of customized safety footwear and footwear adaptations exist:

### **Type 1 – equipped with customized insoles**

Safety footwear (complying ISO 20345:2021) incorporating a customized insoles adapted to the wearers needs.

### **Type 2 – modified safety footwear**

Safety footwear (complying ISO 20345: 2021) modified from its original construction to fit to an individual user.

See examples in ISO 21064:2017, 6.4.

### **Type 3 – Bespoke safety footwear**

Safety footwear (complying ISO 20345: 2021) constructed as a single unit to fit an individual user.

See examples in ISO 21064:2017, 6.3.2 and 6.3.3.

## **3.20**

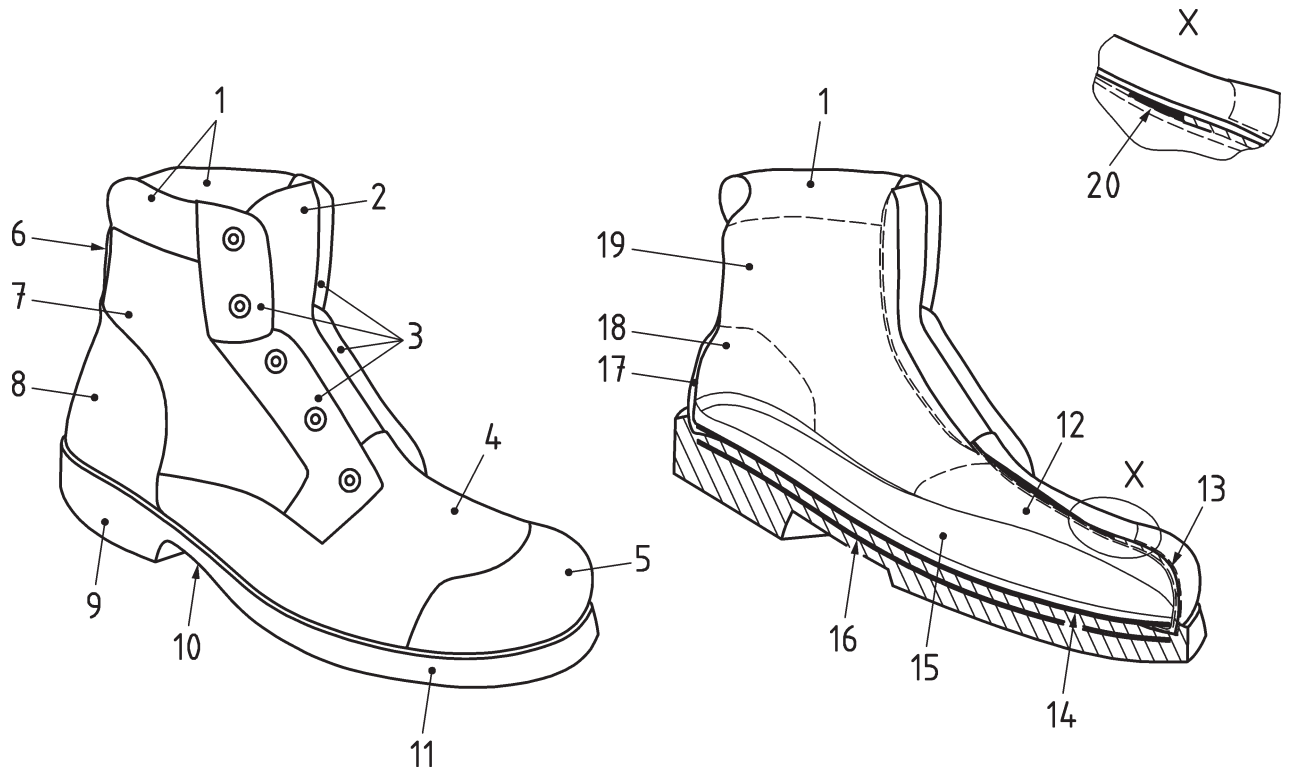
### **Hybrid footwear**

a product with a vulcanized rubber or moulded polymeric lower foot section to the upper with a leather and/or fabric leg shaft. Hybrid footwear does not fully meet the classifications I or II as described in [Clause 4](#).

Two Hybrid footwear product types exist:

**Hybrid “moulded” footwear** – with a vulcanized rubber or all moulded polymeric foot section integrally moulded around the toecap and often including the outsole. The foot area of this product type is unlined and usually does not incorporate an insole.

**Hybrid “constructed” footwear** – with a foot section of vulcanized rubber or all moulded polymeric that is manufactured separately and then constructed around a conventionally lasted lining/insole construction and often with a separately attached outsole.



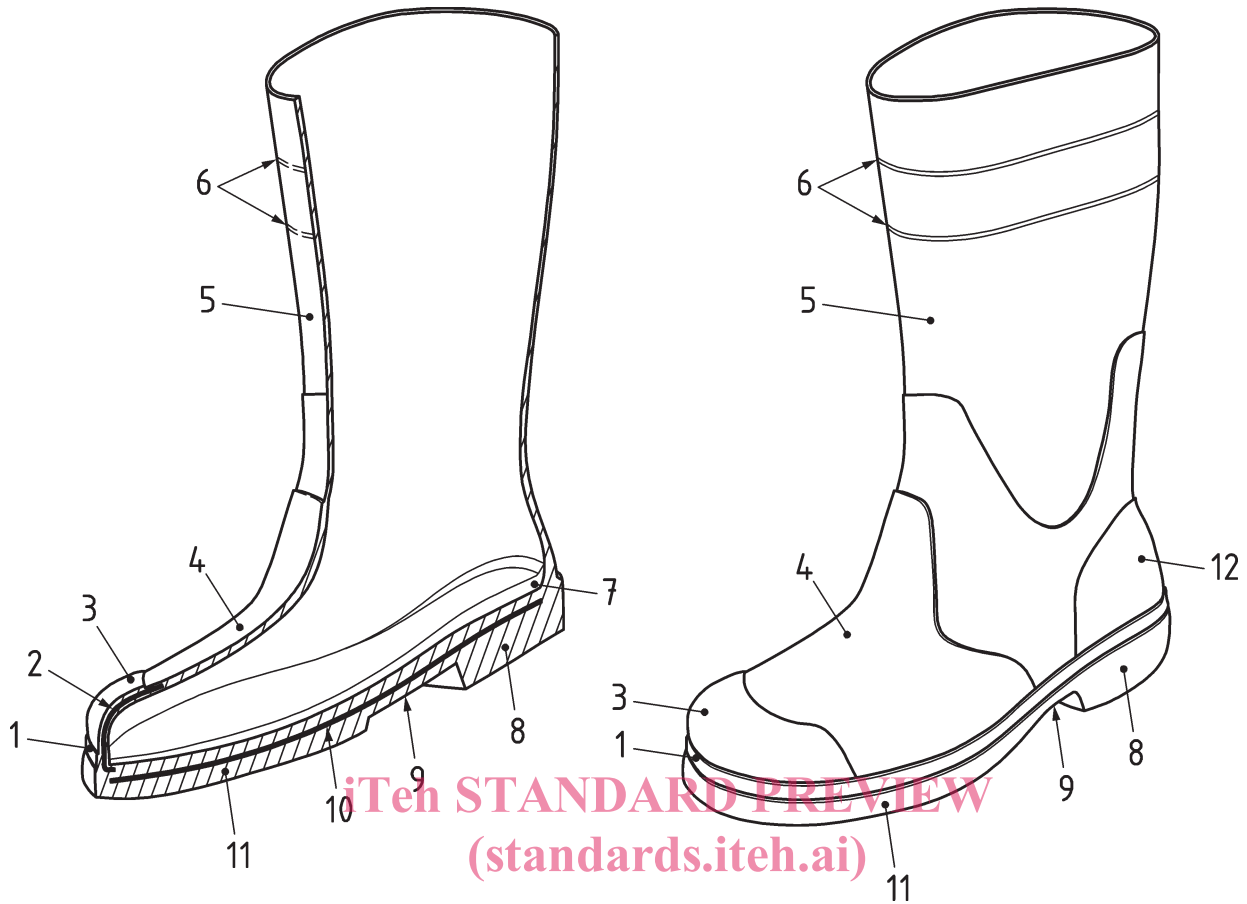
**Key**

- |                    |                                 |
|--------------------|---------------------------------|
| 1 collar           | 11 outsole – forepart           |
| 2 tongue           | 12 vamp lining                  |
| 3 facing           | 13 safety toecap                |
| 4 upper – vamp     | 14 insole board                 |
| 5 scuff cap        | 15 insock/seat sock/footbed     |
| 6 back strap       | 16 perforation-resistant insert |
| 7 upper – quarter  | 17 counter stiffener            |
| 8 upper – counter  | 18 counter lining               |
| 9 outsole – heel   | 19 quarter lining               |
| 10 outsole – waist | 20 toecap back edge covering    |

**iTeh STANDARD PREVIEW**  
 (standards.iteh.ai)

oSIST prEN ISO 20345:2020  
<https://standards.iteh.ai/catalog/standards/sist/01c57ee-80a9-418a-9bed-25173cd773d/osist-pr-en-15-20345-2020>

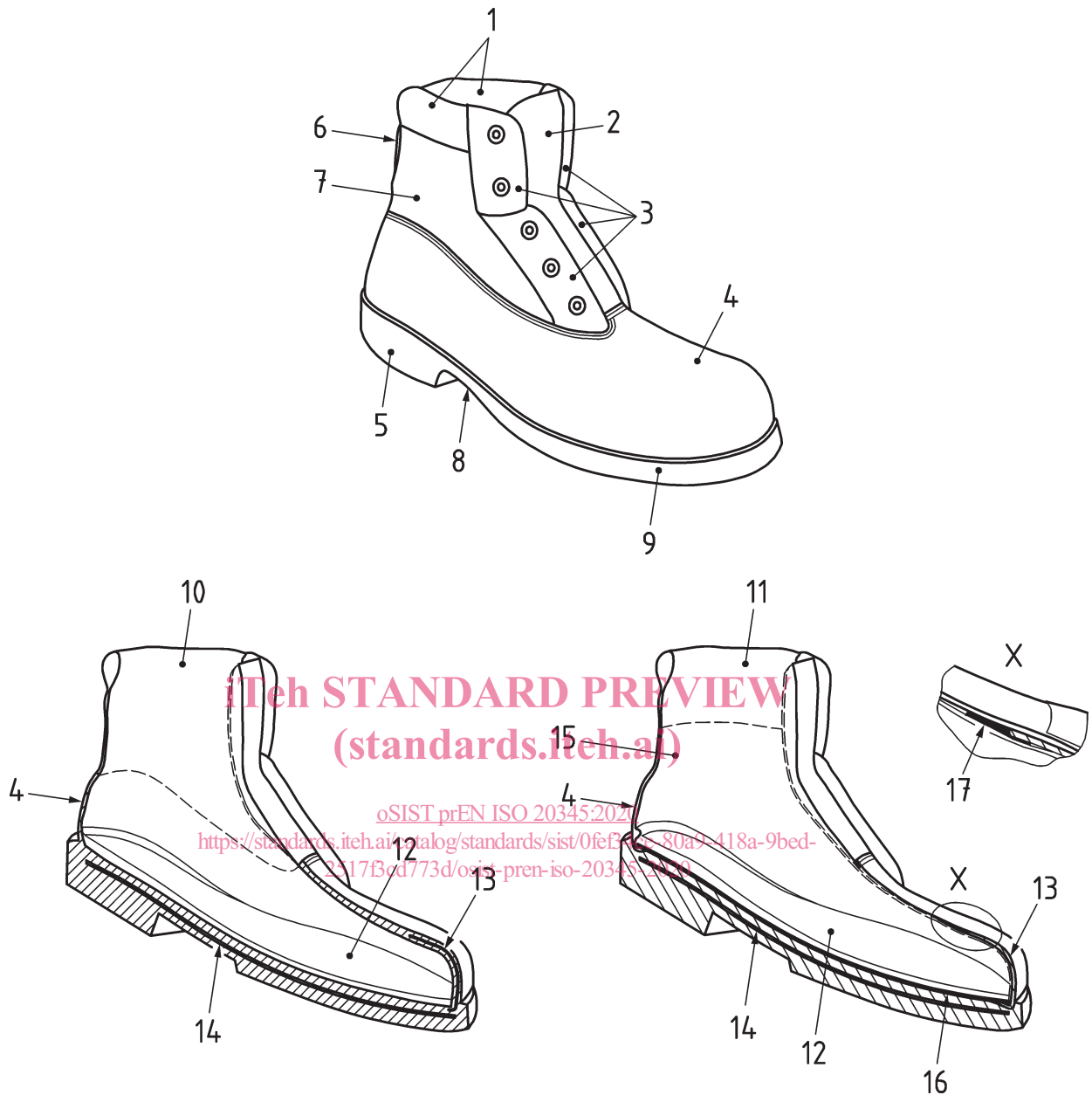
**Figure 1 — Example parts of class I safety footwear**



**Key**

- |   |               |    |                              |
|---|---------------|----|------------------------------|
| 1 | Foxing strip  | 7  | Insock/seat sock/Footbed     |
| 2 | Safety toecap | 8  | Outsole - Heel               |
| 3 | Scuff cap     | 9  | Outsole - Waste              |
| 4 | Upper - vamp  | 10 | Perforation resistant insert |
| 5 | Upper - Shaft | 11 | Outsole - Forepart           |
| 6 | Trim marks    | 12 | Upper - counter              |

**Figure 2 — Example parts of class II safety footwear**



Hybrid moulded (Entirely moulded lower section) Hybrid constructed (seperately attached sole unit)

**Key**

- |  |                                 |
|--|---------------------------------|
| 1 Collar                                 | 10 lining                       |
| 2 Tongue                                 | 11 Collar lining                |
| 3 Facings                                | 12 insock/seat sock/footbed     |
| 4 Moulded rubber or polymeric upper part | 13 safety toecap                |
| 5 Outsole - Heel                         | 14 Perforation resistant insert |
| 6 backstrap                              | 15 Foot section lining          |
| 7 Upper leather or fabric section        | 16 insole board                 |
| 8 Outsole - Waist                        | 17 Toecap back edge covering    |
| 9 Outsole - forepart                     |                                 |

**Figure 3 — Example parts of hybrid safety footwear**