
Merilni postopki za merjenje nivoja električnih in magnetnih polj, ki jih generirajo izmenični napajalni sistemi, z vidika izpostavljenosti ljudi - Popravek AC

Electric and magnetic field levels generated by AC power systems - Measurement procedures with regard to public exposure

Elektrische und magnetische Felder, die von Wechselstrom-Energieversorgungssystemen erzeugt werden - Messverfahren im Hinblick auf die Exposition der Allgemeinbevölkerung

Champs électriques et magnétiques générés par les systèmes d'alimentation à courant alternatif - Procédures de mesure des niveaux d'exposition du public

Ta slovenski standard je istoveten z: EN 62110:2009/AC:2015

ICS:

17.200.20	Instrumenti za merjenje temperature	Temperature-measuring instruments
29.240.01	Omrežja za prenos in distribucijo električne energije na splošno	Power transmission and distribution networks in general

SIST EN 62110:2010/AC:2015**en**

iTeh STANDARD PREVIEW
(standards.iteh.ai)

[SIST EN 62110:2010/AC:2015](https://standards.iteh.ai/catalog/standards/sist/4e2008ef-48b9-4f53-8e46-82a48d7a3099/sist-en-62110-2010-ac-2015)

<https://standards.iteh.ai/catalog/standards/sist/4e2008ef-48b9-4f53-8e46-82a48d7a3099/sist-en-62110-2010-ac-2015>

INTERNATIONAL ELECTROTECHNICAL COMMISSION
COMMISSION ÉLECTROTECHNIQUE INTERNATIONALEIEC 62110
Edition 1.0 2009-08IEC 62110
Édition 1.0 2009-08ELECTRIC AND MAGNETIC FIELD LEVELS
GENERATED BY AC POWER SYSTEMS –
MEASUREMENT PROCEDURES WITH REGARD
TO PUBLIC EXPOSURECHAMPS ÉLECTRIQUES ET MAGNÉTIQUES
GÉNÉRÉS PAR LES SYSTÈMES
D'ALIMENTATION A COURANT ALTERNATIF –
PROCÉDURES DE MESURE DES NIVEAUX
D'EXPOSITION DU PUBLIC

CORRIGENDUM 1

Corrections to the French version appear after the English text.

Les corrections à la version française sont données après le texte anglais.

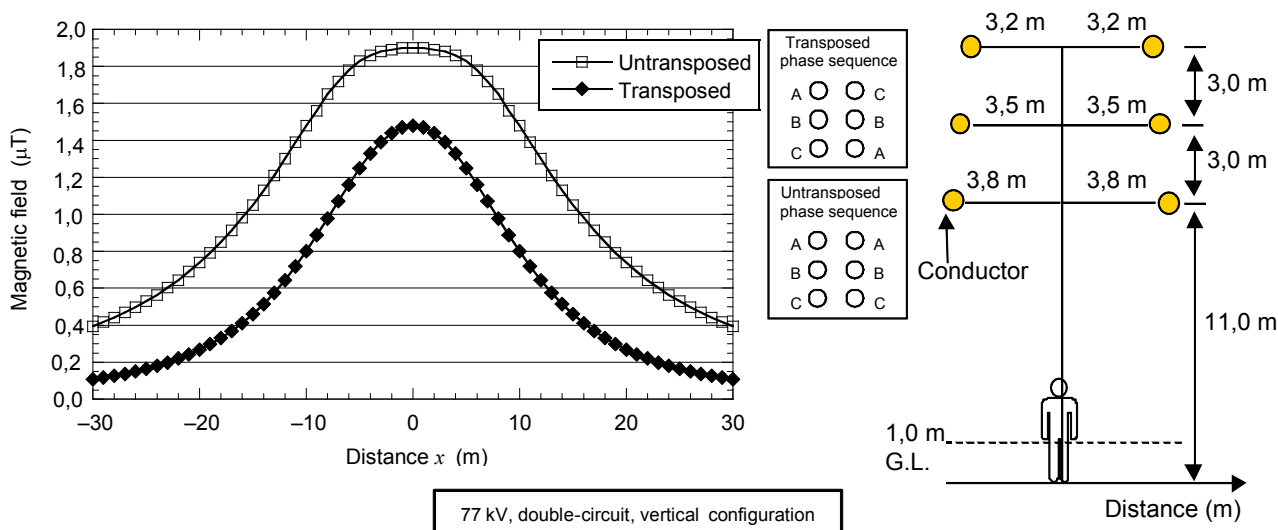
(standards.iteh.ai)

SIST EN 62110:2010/AC:2015

<https://standards.iteh.ai/catalog/standards/sist/4e2008ef48b9-4f53-8e46->

Figure B.1 – Magnetic field levels under a 77 kV overhead transmission line

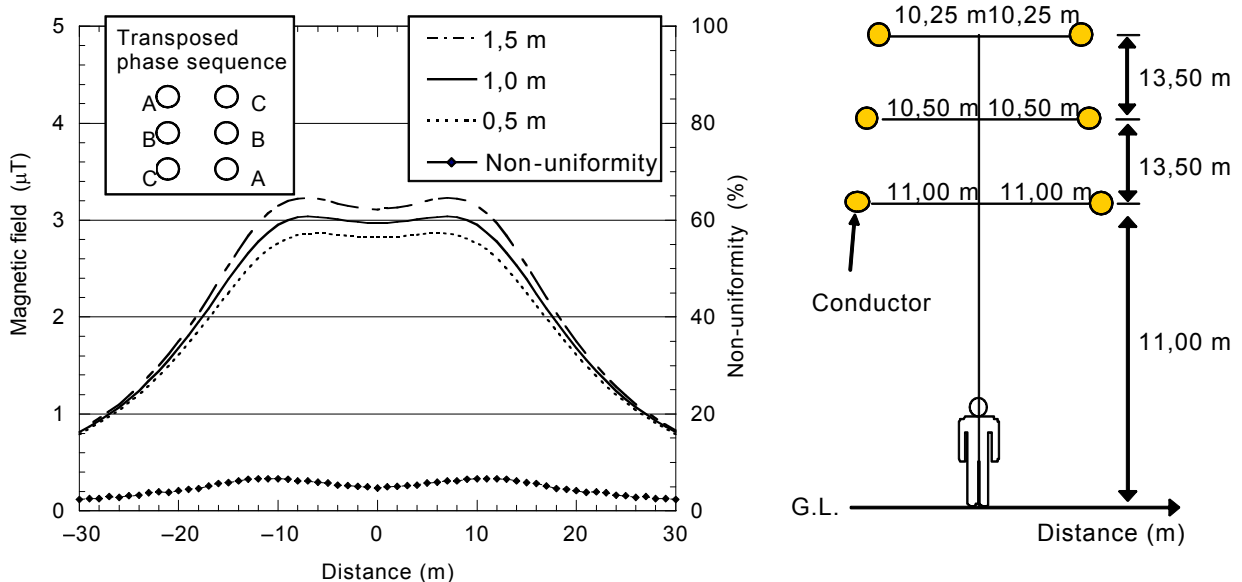
Replace the existing Figure B.1 with the following:



IEC

Figure B.6 – Magnetic field levels and non-uniformity under a 500 kV overhead transmission line – Effect of separation between conductors

Replace the existing Figure B.6 with the following:



500 kV, double-circuit, vertical configuration, transposed phase arrangement

(standards.iteh.ai)

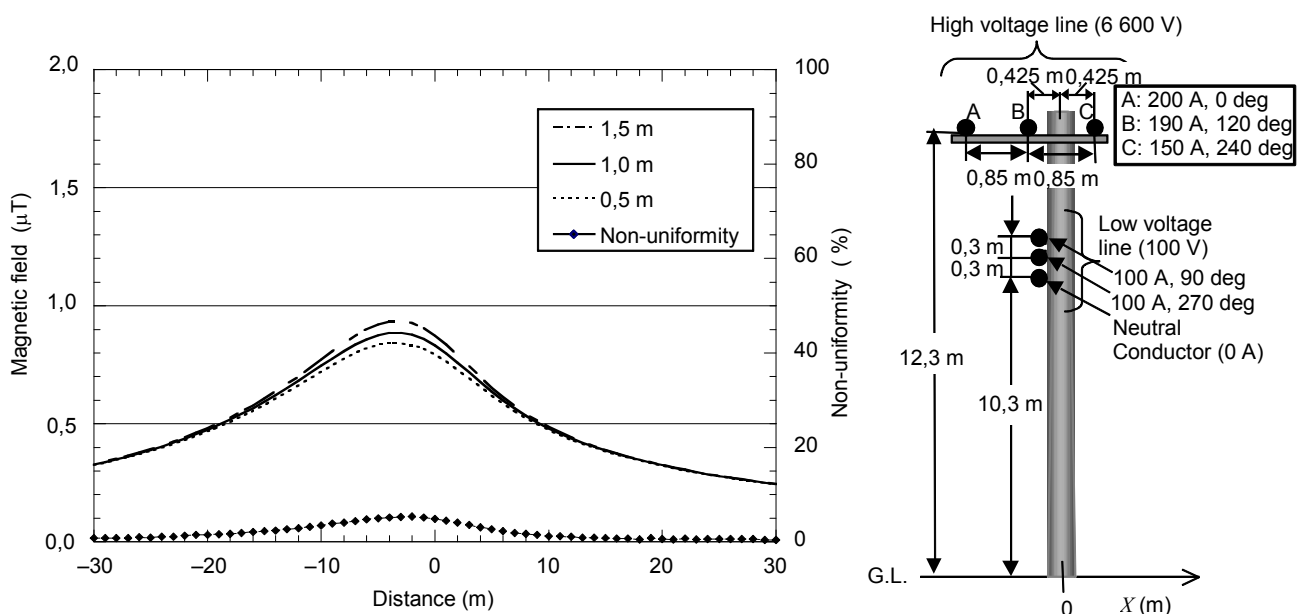
IEC

SIST EN 62110:2010/AC:2015

<https://standards.iteh.ai/catalog/standards/sist/4e2008ef48b9-4f53-8e46-82a46d7a3077/sist-en-62110-2010-ac-2015>

Figure B.9 – Magnetic field levels and non-uniformity under an overhead distribution line (6 600 V / 100 V)

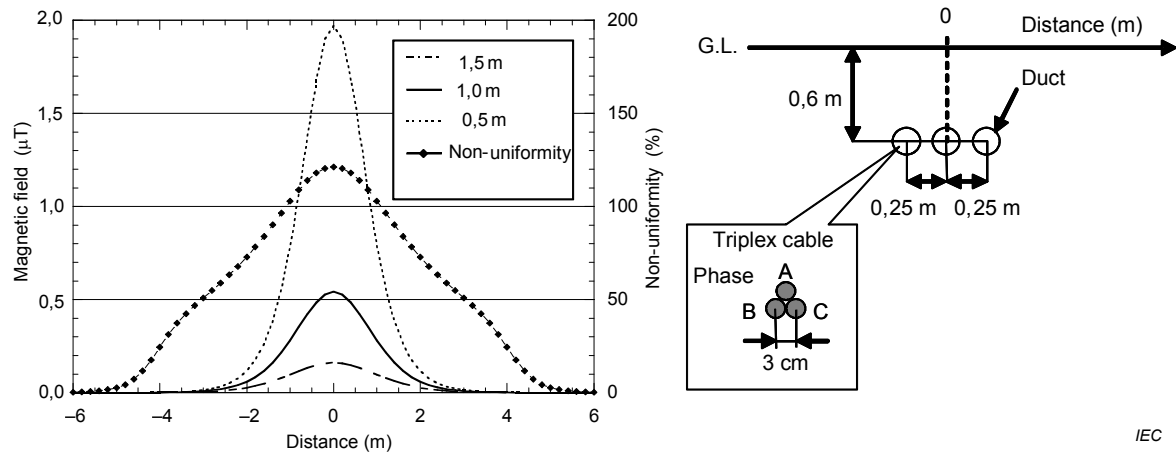
Replace the existing Figure B.9 with the following:



IEC

Figure B.11 – Magnetic field levels and non-uniformity above underground cables – Effect of separation between conductors

Replace the existing Figure B.11 with the following:



IEC

iTeh STANDARD PREVIEW
(standards.iteh.ai)

[SIST EN 62110:2010/AC:2015](https://standards.iteh.ai/catalog/standards/sist/4e2008ef-48b9-4f53-8e46-82a48d7a3099/sist-en-62110-2010-ac-2015)

<https://standards.iteh.ai/catalog/standards/sist/4e2008ef-48b9-4f53-8e46-82a48d7a3099/sist-en-62110-2010-ac-2015>