



# SLOVENSKI STANDARD

## SIST EN 14587-2:2024

01-oktober-2024

---

**Železniške naprave - Infrastruktura - Uporovno varjenje novih tirnic - 2. del:  
Varjenje tirnic kakovosti R200, R220, R260, R260Mn, R320Cr, R350HT, R350LHT,  
R370CrHT in R400HT s prevoznim varilnim strojem**

Railway applications - Infrastructure - Flash butt welding of new rails - Part 2: R200, R220, R260, R260Mn, R320Cr, R350HT, R350LHT, R370CrHT and R400HT grade rails by mobile welding machines at sites other than a fixed plant

Bahnanwendungen - Infrastruktur - Abbrennstumpfschweißen von Schienen - Teil 2: Abbrennstumpfschweißen neuer Schienen der Stahlsorten R200, R220, R260, R260Mn, R320Cr, R350HT, R350LHT, R370CrHT und R400HT durch mobile Schweißmaschinen an Orten außerhalb eines Schweißwerkes

Applications ferroviaires - Infrastructure - Soudage des rails neufs par étincelage - Partie 2 : Rails de nuances R200, R220, R260, R260Mn, R320Cr, R350HT, R350 LHT, R370CrHT et R400HT par des soudeuses mobiles dans des sites autres qu'une installation fixe

**Ta slovenski standard je istoveten z: EN 14587-2:2024**

**ICS:**

|           |                              |                          |
|-----------|------------------------------|--------------------------|
| 25.160.10 | Varilni postopki in varjenje | Welding processes        |
| 93.100    | Gradnja železnic             | Construction of railways |

**SIST EN 14587-2:2024**

**en,fr,de**



EUROPEAN STANDARD

EN 14587-2

NORME EUROPÉENNE

EUROPÄISCHE NORM

August 2024

ICS 25.160.10; 93.100

Supersedes EN 14587-2:2009

English Version

## Railway applications - Infrastructure - Flash butt welding of new rails - Part 2: R200, R220, R260, R260Mn, R320Cr, R350HT, R350LHT, R370CrHT and R400HT grade rails by mobile welding machines at sites other than a fixed plant

Applications ferroviaires - Voie - Soudage des rails neufs par étincelage - Partie 2 : Rails de nuances R200, R220, R260, R260Mn, R320Cr, R350HT, R350 LHT, R370CrHT et R400HT par des machines à souder mobiles dans des sites autres qu'une installation fixe

Bahnanwendungen - Infrastruktur - Abbrennstumpfschweißen von Schienen - Teil 2: Abbrennstumpfschweißen neuer Schienen der Stahlsorten R200, R220, R260, R260Mn, R320Cr, R350HT, R350LHT, R370CrHT und R400HT durch mobile Schweißmaschinen an Orten außerhalb eines Schweißwerkes

This European Standard was approved by CEN on 14 July 2024.

CEN members are bound to comply with the CEN/CENELEC Internal Regulations which stipulate the conditions for giving this European Standard the status of a national standard without any alteration. Up-to-date lists and bibliographical references concerning such national standards may be obtained on application to the CEN-CENELEC Management Centre or to any CEN member.

This European Standard exists in three official versions (English, French, German). A version in any other language made by translation under the responsibility of a CEN member into its own language and notified to the CEN-CENELEC Management Centre has the same status as the official versions.

CEN members are the national standards bodies of Austria, Belgium, Bulgaria, Croatia, Cyprus, Czech Republic, Denmark, Estonia, Finland, France, Germany, Greece, Hungary, Iceland, Ireland, Italy, Latvia, Lithuania, Luxembourg, Malta, Netherlands, Norway, Poland, Portugal, Republic of North Macedonia, Romania, Serbia, Slovakia, Slovenia, Spain, Sweden, Switzerland, Türkiye and United Kingdom.



EUROPEAN COMMITTEE FOR STANDARDIZATION  
COMITÉ EUROPÉEN DE NORMALISATION  
EUROPÄISCHES KOMITEE FÜR NORMUNG

CEN-CENELEC Management Centre: Rue de la Science 23, B-1040 Brussels

## Contents

Page

|  |    |
|--|----|
| European foreword.....   | 4  |
| Introduction .....   | 5  |
| 1 Scope.....   | 6  |
| 2 Normative references.....  | 6  |
| 3 Terms and definitions .....  | 6  |
| 4 Requirements for the welding process .....                         | 8  |
| 4.1 General.....   | 8  |
| 4.2 Rail end preparation and horizontal alignment requirements ..... | 8  |
| 4.3 Clamping force .....   | 8  |
| 4.4 Pre-heating.....   | 8  |
| 4.5 Final flashing.....  | 8  |
| 4.6 Upsetting .....  | 8  |
| 4.7 Unclamping.....  | 8  |
| 4.8 Slippage.....  | 9  |
| 4.9 Welding parameters .....   | 9  |
| 4.10 Steps across the weld.....                                      | 9  |
| 4.11 Removal of excess upset .....                                   | 11 |
| 4.12 Post-weld thermal treatment .....                               | 13 |
| 5 Procedure approval.....  | 13 |
| 5.1 General.....   | 13 |
| 5.2 Information to be supplied by the purchaser .....                | 13 |
| 5.3 Sample preparation.....  | 14 |
| 5.4 Approval tests.....  | 14 |
| 5.4.1 Visual examination.....  | 14 |
| 5.4.2 Weld trimming .....  | 14 |
| 5.4.3 Weld straightness and flatness .....                           | 14 |
| 5.4.4 Magnetic particle or dye penetrant testing .....               | 14 |
| 5.4.5 Bend test.....   | 14 |
| 5.4.6 Macro examination.....   | 15 |
| 5.4.7 Micro examination.....   | 17 |
| 5.4.8 Hardness test.....   | 17 |
| 5.4.9 Fatigue test .....   | 17 |
| 5.5 Test report.....   | 18 |
| 6 Approval of other rail profiles and grades.....                    | 18 |
| 6.1 General.....   | 18 |
| 6.2 Sample preparation.....  | 18 |
| 6.3 Approval tests.....  | 18 |
| 6.4 Test report.....   | 18 |
| 7 Approval of the contractor.....                                    | 18 |
| 7.1 General.....   | 18 |
| 7.2 Welding procedure.....   | 19 |
| 7.3 Operators .....  | 19 |
| 7.4 Supervision.....   | 19 |
| 7.5 Weld testing .....   | 19 |
| 7.6 Equipment .....  | 19 |

|        |  |    |
|--------|--|----|
| 7.7    | Field approval of the contractor.....  | 19 |
| 8      | Weld production following procedure approval .....   | 19 |
| 8.1    | Weld production .....  | 19 |
| 8.2    | Information supplied by the purchaser .....  | 19 |
| 8.3    | Rail end preparation and horizontal rail alignment requirements.....   | 20 |
| 8.4    | Weld parameter monitoring.....   | 20 |
| 8.5    | Weld identification.....   | 20 |
| 8.6    | Visual examination .....   | 20 |
| 8.7    | Steps across the weld .....  | 20 |
| 8.8    | Finishing .....  | 20 |
| 8.8.1  | Correction of vertical and horizontal weld alignment.....  | 20 |
| 8.8.2  | Profile finishing of the rail head.....  | 20 |
| 8.9    | Weld straightness and flatness.....  | 21 |
| 8.9.1  | Alignment requirements.....  | 21 |
| 8.9.2  | Straightness and flatness measurement .....  | 21 |
| 8.10   | Bend test .....  | 22 |
| 8.10.1 | General .....  | 22 |
| 8.10.2 | Bend test procedure .....  | 22 |
| 8.10.3 | Interpretation of results .....  | 23 |
| 8.10.4 | Retesting.....   | 23 |
| 8.11   | Documentation .....  | 23 |
|        | Annex A (normative) Bend test requirements.....  | 24 |
|        | Annex B (normative) Test weld fracture faces – Recording of defects.....   | 26 |
|        | Annex C (normative) Fatigue test method for flash butt welds .....   | 28 |
| C.1    | General .....  | 28 |
| C.2    | Test equipment.....  | 28 |
| C.3    | Calibration.....   | 30 |
| C.4    | Fatigue test method .....  | 30 |
|        | Annex D (normative) Macro examination and micro examination.....   | 35 |
| D.1    | Macro examination .....  | 35 |
| D.2    | Micro examination .....  | 35 |
|        | Annex E (normative) Hardness testing.....  | 37 |
|        | Annex ZA (informative) Relationship between this European Standard and the Essential<br>Requirements of EU Directive (EU) 2016/797 aimed to be covered ..... | 39 |
|        | Bibliography .....   | 40 |

## EN 14587-2:2024 (E)

### European foreword

This document (EN 14587-2:2024) has been prepared by Technical Committee CEN/TC 256 “Railway applications”, the secretariat of which is held by DIN.

This European Standard shall be given the status of a national standard, either by publication of an identical text or by endorsement, at the latest by February 2025, and conflicting national standards shall be withdrawn at the latest by February 2025.

Attention is drawn to the possibility that some of the elements of this document may be the subject of patent rights. CEN shall not be held responsible for identifying any or all such patent rights.

This document supersedes EN 14587-2:2009.

The main changes compared to the previous edition are listed below:

- introduction of new rail steel grades (R200, R350LHT, R370CrHT and R400HT);
- modification of the macro examination criteria;
- editorial changes concerning the text and drawings have been made to improve consistency and understanding of the requirements and information used throughout the document.

This document has been prepared under a standardization request addressed to CEN by the European Commission. The Standing Committee of the EFTA States subsequently approves these requests for its Member States.

For the relationship with EU Legislation, see informative Annex ZA, which is an integral part of this document.

This document is one of three parts of the EN 14587 series, under the general title “*Railway applications — Infrastructure — Flash butt welding of new rails*”. The list of parts is as follows:

- *Part 1: R220, R260, R260Mn, R320Cr, R350HT, R350LHT, R370CrHT and R400HT grade rails in a fixed plant;*
- *Part 2: R200, R220, R260, R260Mn, R320Cr, R350HT, R350LHT, R370CrHT and R400HT grade rails by mobile welding machines at sites other than a fixed plant;*
- *Part 3: Welding in association with crossing construction.*

Any feedback and questions on this document should be directed to the users’ national standards body. A complete listing of these bodies can be found on the CEN website.

According to the CEN-CENELEC Internal Regulations, the national standards organisations of the following countries are bound to implement this European Standard: Austria, Belgium, Bulgaria, Croatia, Cyprus, Czech Republic, Denmark, Estonia, Finland, France, Germany, Greece, Hungary, Iceland, Ireland, Italy, Latvia, Lithuania, Luxembourg, Malta, Netherlands, Norway, Poland, Portugal, Republic of North Macedonia, Romania, Serbia, Slovakia, Slovenia, Spain, Sweden, Switzerland, Türkiye and the United Kingdom.

## Introduction

This part of the EN 14587 series has five main topics:

- a) requirements of a welding process;
- b) procedure approval for a mobile plant;
- c) approval of other rail profiles or grades;
- d) approval of welding contractor;
- e) weld production following approval.

This part of the EN 14587 series supports a European Directive that will permit the freedom of an open European market. To enable this, it is essential that a standard is in place that satisfies the needs of the infrastructure owners or custodians and reflects the production capabilities of the manufacturers in technical and quality terms.

**iTeh Standards**  
**(<https://standards.iteh.ai>)**  
**Document Preview**

[SIST EN 14587-2:2024](https://standards.iteh.ai/catalog/standards/sist/3abdb6d3-1564-4057-a4f0-ae67b9a0cc16/sist-en-14587-2-2024)

<https://standards.iteh.ai/catalog/standards/sist/3abdb6d3-1564-4057-a4f0-ae67b9a0cc16/sist-en-14587-2-2024>

## EN 14587-2:2024 (E)

### 1 Scope

This document specifies requirements for the approval of a welding process by mobile plant, together with the requirements for subsequent welding production.

It applies to new Vignole railway rails R200, R220, R260, R260Mn, R320Cr, R350HT, R350LHT, R370CrHT and R400HT grade rails of 46 kg/m and above, as contained in EN 13674-1:2011+A1:2017, welded by a flash butt welding process by mobile plant and intended for use on railway infrastructure.

This document applies to the welding of rails into welded strings.

### 2 Normative references

The following documents are referred to in the text in such a way that some or all of their content constitutes requirements of this document. For dated references, only the edition cited applies. For undated references, the latest edition of the referenced document (including any amendments) applies.

EN 13674-1:2011+A1:2017, *Railway applications — Track — Rail — Part 1: Vignole railway rails 46 kg/m and above*

EN ISO 3452-1:2021, *Non-destructive testing — Penetrant testing — Part 1: General principles (ISO 3452-1:2021)*

EN ISO 6507-1:2023, *Metallic materials — Vickers hardness test — Part 1: Test method (ISO 6507-1:2023)*

EN ISO 7500-1:2018, *Metallic materials — Calibration and verification of static uniaxial testing machines — Part 1: Tension/compression testing machines — Calibration and verification of the force-measuring system (ISO 7500-1:2018)*

EN ISO 17638:2016, *Non-destructive testing of welds — Magnetic particle testing (ISO 17638:2016)*

ISO 2768-1:1989, *General tolerances — Part 1: Tolerances for linear and angular dimensions without individual tolerance indications*

### 3 Terms and definitions

For the purposes of this document, the following terms and definitions apply.

ISO and IEC maintain terminology databases for use in standardization at the following addresses:

- ISO Online browsing platform: available at <https://www.iso.org/obp>
- IEC Electropedia: available at <https://www.electropedia.org/>

#### 3.1

##### **as-welded condition**

rails that have been welded and trimmed only

#### 3.2

##### **contractor**

company approved by a railway authority to provide staff and machinery to execute the production of flash butt welds by mobile plant

Note 1 to entry: This may include staff and machinery from within the railway authority.



**3.3****die burn**

damage caused by localised overheating (arcing) on the surface of the rail due to poor contact between the rail and electrode during welding

**3.4****dressing**

removing trimmed upset by grinding or other similar process

**3.5****finished condition**

welded, trimmed and rail head profile finished

**3.6****flat spot**

process-driven discontinuity shown after the slow bend test on the weld fracture face, which has a small lens-like shape

Note 1 to entry: In a vertical longitudinal section (macro) it appears elliptical in shape.

**3.7****lack of bond**

area of incomplete fusion between the rails at the fusion line

Note 1 to entry: This may appear crack-like or as a line discontinuity at the interface either on the surface after removal of the upset or in a weld macro section.

**3.8****profile finishing**

operation by which the rail head or relevant part of the rail head at the weld is restored to rail profile

Note 1 to entry: The operation can be by grinding, milling, planning or any other suitable means.

**3.9****purchaser**

purchaser of the welds

**3.10****railway authority**

either the railway regulator or the owner of the railway infrastructure or the custodian with a delegated responsibility for a railway infrastructure

**3.11****trimmed upset**

metal remaining around the rail profile following the shearing process

**3.12****trimming**

removal of upset

**3.13****upset**

metal extruded around the rail profile as a result of forging

## EN 14587-2:2024 (E)

### 3.14

#### **welded string**

long rail comprising a number of shorter rails welded together

### 3.15

#### **welding process**

the sequence from the selection of the rail prior to welding through to the finishing of the welded string

## 4 Requirements for the welding process

### 4.1 General

All welding shall be carried out on a flash butt mobile welding machine using an automatic, programmed welding sequence.

### 4.2 Rail end preparation and horizontal alignment requirements

The rail ends shall always be sawn or disc cut to the tolerances specified by the purchaser. Areas of electrical contact on the rails and the machine shall be cleaned to bright metal to give a consistent and good electrical contact at the interface.

The rail shall not be damaged by the cleaning operation or through poor electrical contact.

Rails of the same profile shall be positioned in the welding machine such that the welding interface is central to the contact electrodes as assessed by visual or mechanical means.

Before welding, rails shall be aligned laterally to the required rail face or edge, i.e. left, or right, or to the rail centreline.

For reasons of asymmetry rails should be welded with the brand marks on the same side throughout the welded string.

### 4.3 Clamping force

Rails shall be secured in the flash butt welding machine by a clamping arrangement. The clamping force that is exerted on the rails shall not damage in such a way that subsequent cracking in the rail is generated, see 5.4.1.

### 4.4 Pre-heating

For the pre-heating, the rail ends shall progress uniformly in a reversible or a continuous process, and perpendicular to the running surface during the whole welding cycle.

### 4.5 Final flashing

Once initiated the final flashing shall be continuous.

### 4.6 Upsetting

Upsetting shall immediately follow final flashing. Sufficient forging pressure shall be applied to ensure that voids are closed and oxides are expelled such that they are kept to a minimum at the weld interface. The weld interface shall extend into the upset.

### 4.7 Unclamping

In order to maintain the alignment, the time between completion of forging and unclamping shall be a minimum of 4 s.

## 4.8 Slippage

Clamping force shall be maintained to avoid any movement between the contact dies and rails.

## 4.9 Welding parameters

- a) The welding machine and/or management system equipment shall be capable of displaying the following:
- 1) programme identification and setting details;
  - 2) welding current;
  - 3) upset force or pressure;
  - 4) displacement;
  - 5) welding time;
  - 6) limits/range of the main welding parameters;
  - 7) weld identification number.
- b) The welding parameters shall be determined during procedural trials and, once approval has been granted, shall not be changed, with the exception of changes concerning the environments in 4.9 4).
- c) The welding parameters shall be monitored and recorded. These records shall be referenced to the appropriate welds.
- d) Due to extreme variations in seasonal temperatures, the contractor may request from the railway authority the use of an alternative welding program. A bending test according to 5.4.5 shall be carried out in this case.
- e) The weld identification number shall be created and recorded by the machine in a chronological order for all welds produced during approval and production processes.

## 4.10 Steps across the weld

- Any step between the rails across the weld in the trimmed but not dressed condition shall not exceed those dimensions shown in Table 1.
- Checks shall be made at a position 20 mm on each side of the weld upset centreline using a 1 m nibbed straight edge and feeler shims as shown in Figure 1. An alternative step measurement gauge may be used as shown in Figure 2.

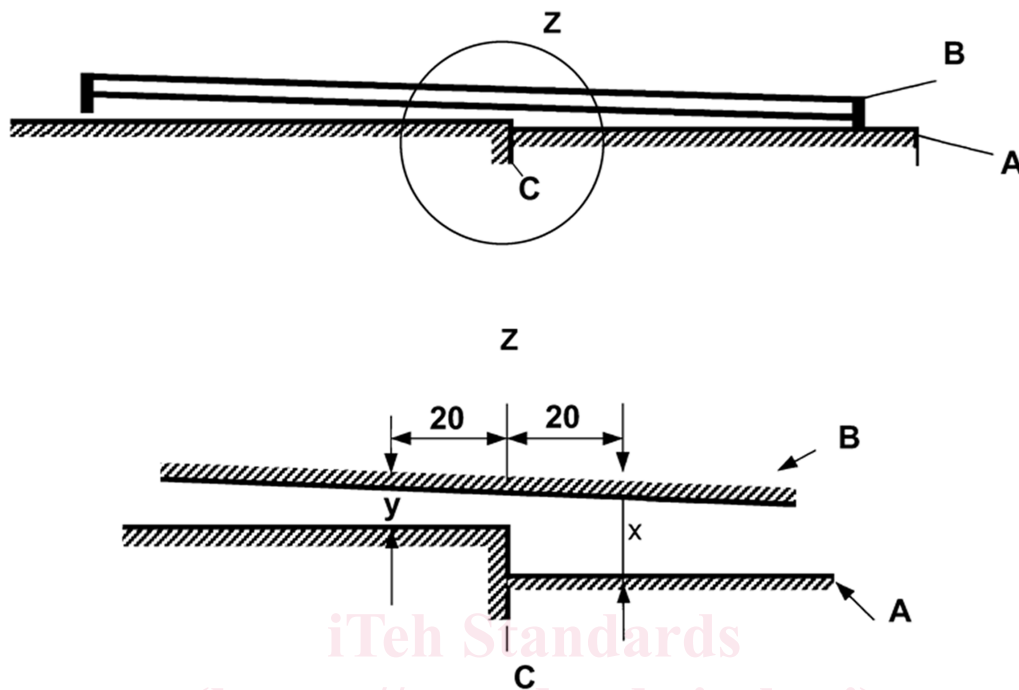
**Table 1 — Maximum permitted steps**

| Position of step on the rail   | Maximum permitted step (in mm) |
|--|--------------------------------|
| Vertically on the longitudinal centreline of the running surface                     | 0,5                            |
| Horizontally on the aligned face or edge ( $14 \pm 1$ ) mm below the running surface | 0,5                            |
| Horizontally on the edge of the rail foot  | 2,0                            |

## EN 14587-2:2024 (E)

Where the step arises from the rail dimensions the rail foot tips may be dressed locally to achieve this requirement.

Dimensions in millimetres



## Key

- A running surface
- B nibbed straight edge
- C weld upset centreline

Z detail view of the step

NOTE Step =  $|x-y|$  mm

Figure 1 — Measurement of the step with nibbed straight edge