



**SLOVENSKI STANDARD**  
**SIST EN 15273-1:2013/kFprA1:2016**  
**01-maj-2016**

---

**Železniške naprave - Profili - 1. del: Splošno - Skupna pravila, ki se nanašajo na infrastrukturo in železniška vozila - Dopolnilo A1**

Railway applications - Gauges - Part 1: General - Common rules for infrastructure and rolling stock

Bahnanwendungen - Begrenzungslinien - Teil 1: Allgemeines - Gemeinsame Vorschriften für Infrastruktur und Fahrzeuge

Applications ferroviaires - Gabarits - Partie 1 : Généralités - Règles communes à l'infrastructure et au matériel roulant

**Ta slovenski standard je istoveten z: EN 15273-1:2013/FprA1**

---

**ICS:**

45.060.01      Železniška vozila na splošno      Railway rolling stock in general

**SIST EN 15273-1:2013/kFprA1:2016      en,fr,de**



EUROPEAN STANDARD  
NORME EUROPÉENNE  
EUROPÄISCHE NORM

**FINAL DRAFT**  
**EN 15273-1:2013**

**FprA1**

March 2016

ICS 45.020; 45.060.01

English Version

## Railway applications - Gauges - Part 1: General - Common rules for infrastructure and rolling stock

Applications ferroviaires - Gabarits - Partie 1 :  
Généralités - Règles communes à l'infrastructure et au matériel roulant

Bahnanwendungen - Begrenzungslinien - Teil 1:  
Allgemeines - Gemeinsame Vorschriften für Infrastruktur und Fahrzeuge

This draft amendment is submitted to CEN members for formal vote. It has been drawn up by the Technical Committee CEN/TC 256.

This draft amendment A1, if approved, will modify the European Standard EN 15273-1:2013. If this draft becomes an amendment, CEN members are bound to comply with the CEN/CENELEC Internal Regulations which stipulate the conditions for inclusion of this amendment into the relevant national standard without any alteration.

This draft amendment was established by CEN in three official versions (English, French, German). A version in any other language made by translation under the responsibility of a CEN member into its own language and notified to the CEN-CENELEC Management Centre has the same status as the official versions.

CEN members are the national standards bodies of Austria, Belgium, Bulgaria, Croatia, Cyprus, Czech Republic, Denmark, Estonia, Finland, Former Yugoslav Republic of Macedonia, France, Germany, Greece, Hungary, Iceland, Ireland, Italy, Latvia, Lithuania, Luxembourg, Malta, Netherlands, Norway, Poland, Portugal, Romania, Slovakia, Slovenia, Spain, Sweden, Switzerland, Turkey and United Kingdom.

Recipients of this draft are invited to submit, with their comments, notification of any relevant patent rights of which they are aware and to provide supporting documentation.

**Warning** : This document is not a European Standard. It is distributed for review and comments. It is subject to change without notice and shall not be referred to as a European Standard.



EUROPEAN COMMITTEE FOR STANDARDIZATION  
COMITÉ EUROPÉEN DE NORMALISATION  
EUROPÄISCHES KOMITEE FÜR NORMUNG

**CEN-CENELEC Management Centre: Avenue Marnix 17, B-1000 Brussels**

**Contents**

Page

<b>European Foreword.....</b>	<b>3</b>
<b>1 Changes to Clause 4, Symbols and abbreviations.....</b>	<b>4</b>
<b>2 Changes to Subclause 7.3.1.1.1, General rules.....</b>	<b>4</b>
<b>3 Change to Subclause 7.3.1.4.2.1, General.....</b>	<b>4</b>
<b>4 Change to Subclause 7.3.4.1.2, Zone swept by the wheel.....</b>	<b>4</b>
<b>5 Change to Subclause B.6.1.5.1, Static reference profile for the lateral parts and upper parts.....</b>	<b>5</b>
<b>6 Change to Subclause B.6.1.5.2, Static reference profile for the lower parts.....</b>	<b>5</b>
<b>7 Change to Subclause B.6.1.6, Static gauge GED10.....</b>	<b>6</b>
<b>8 Changes to Annex C, Reference profiles and associated rules for gauges.....</b>	<b>6</b>
<b>9 Change to Subclause C.1.2.1.2, Kinematic reference profile for the lower parts corresponding to the lower limit of vehicles not passing over either marshalling humps or rail brakes in an active position.....</b>	<b>7</b>
<b>10 Change to Subclause C.2.3.4, Vertical geometric overthrow upwards and vertical allowance of the infrastructure.....</b>	<b>7</b>
<b>11 Change to Subclause C.12.1.6.1, Kinematic reference profile for the lateral parts and upper parts.....</b>	<b>8</b>
<b>12 Change to Subclause C.12.1.6.2, Kinematic reference profiles for the lower parts.....</b>	<b>8</b>
<b>13 Change to Subclause C.12.1.7, Kinematic gauge GED10.....</b>	<b>9</b>

## European Foreword

This document (EN 15273-1:2013/FprA1:2016) has been prepared by Technical Committee CEN/TC 256 "Railway applications", the secretariat of which is held by DIN.

This document is currently subject to the Unique Acceptance Procedure.

This document has been prepared under a mandate given to CEN by the European Commission and the European Free Trade Association.

## EN 15273-1:2013/FprA1:2016 (E)

**1 Changes to Clause 4, Symbols and abbreviations**

In Table 1, on the 242<sup>nd</sup> line, replace the existing definition of the “ $z_0$ ” symbol with the following:

“Fixed value available to the rolling stock on the outside of the static reference profile.”.

On the 260<sup>th</sup> line of Table 1, replace the existing description of the “ $\Delta_1$ ” symbol with the following:

“Term corresponding to:  $n_i(a - n_i) + \frac{p^2}{4}$ ”.

**2 Changes to Subclause 7.3.1.1.1, General rules**

To the second clause under Figure 20, in the second point of the list, in the phrase “a permanent fixed value F =”, delete the word “fixed”.

Add under Formula (21):

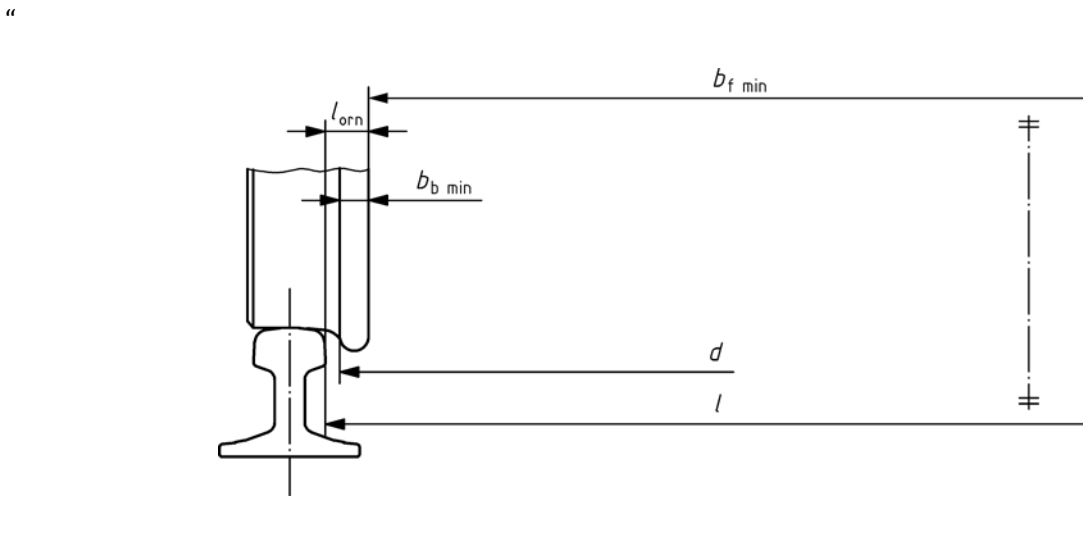
“The value F is to be taken into consideration on the outside of the static reference profile as a fixed value (see Annex B).”.

**3 Change to Subclause 7.3.1.4.2.1, General**

In the Formula (29), replace “ $s_0$ ” with “ $s$ ”.

**4 Change to Subclause 7.3.4.1.2, Zone swept by the wheel**

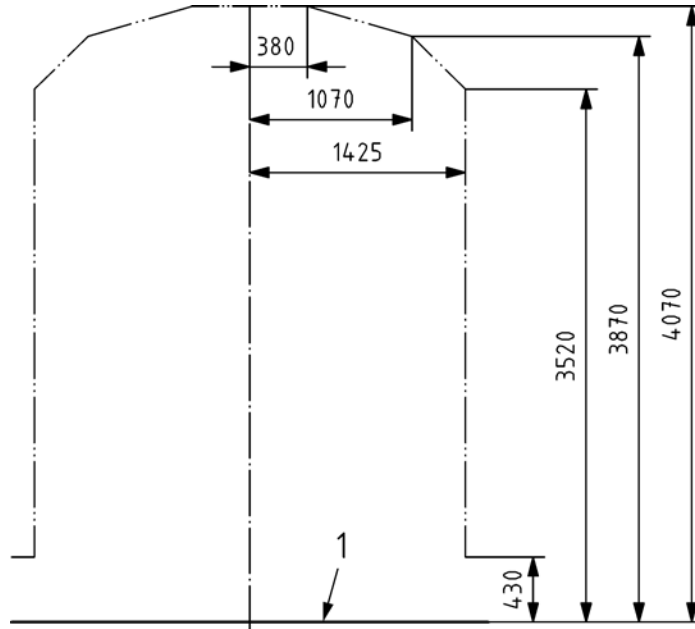
Replace the existing Figure 40 with the following:



## 5 Change to Subclause B.6.1.5.1, Static reference profile for the lateral parts and upper parts

Replace the existing Figure B.21 with the following:

“

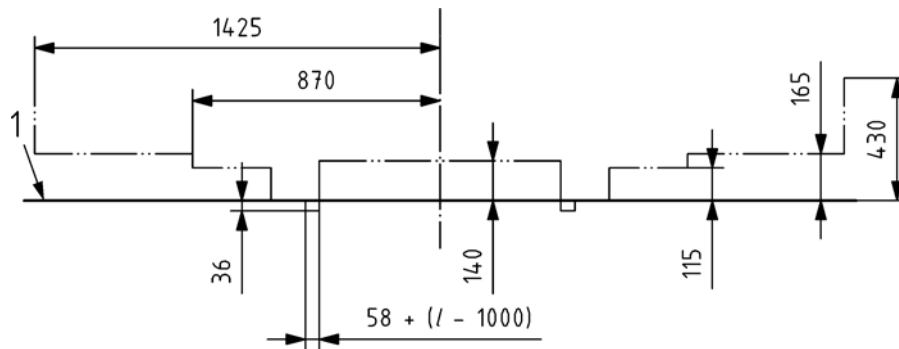


”

## 6 Change to Subclause B.6.1.5.2, Static reference profile for the lower parts

Replace the existing Figure B.22 with the following:

“



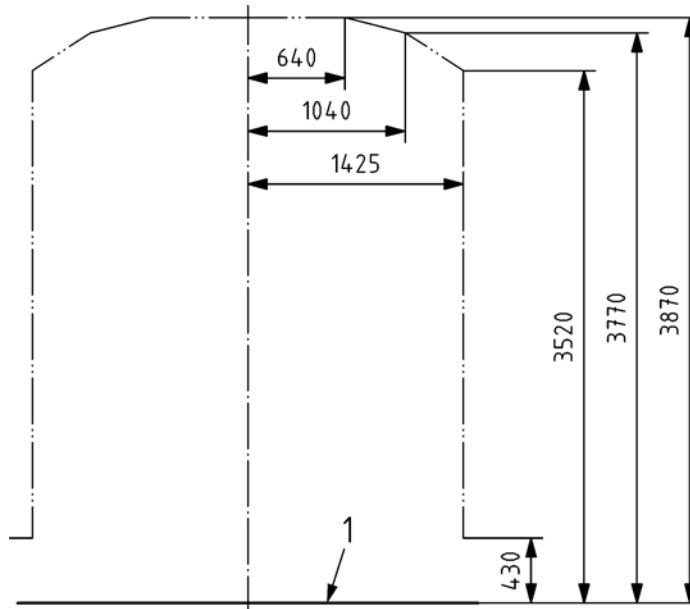
”

## EN 15273-1:2013/FprA1:2016 (E)

**7 Change to Subclause B.6.1.6, Static gauge GED10**

Replace the existing Figure B.23 with the following:

“



”.

**8 Changes to Annex C, Reference profiles and associated rules for gauges**

In each NOTE under Tables C.1, C.5, C.8, C.11, C.13 and C.25, replace “F = 0,045 m” with “F”.

Change the numbers of the following Chapters: C.1.2.2.3 becomes C.1.3, and C.1.2.3 becomes C.1.4.



