

EUROPEAN STANDARD
NORME EUROPÉENNE
EUROPÄISCHE NORM

FINAL DRAFT
EN 15273-2:2013

FprA1

March 2016

ICS 45.020; 45.060.01

English Version

Railway applications - Gauges - Part 2: Rolling stock gauge

Applications ferroviaires - Gabarits - Partie 2 : Gabarit
du matériel roulant

Bahnanwendungen - Begrenzungslinien - Teil 2:
Fahrzeugbegrenzungslinien

This draft amendment is submitted to CEN members for unique acceptance procedure. It has been drawn up by the Technical Committee CEN/TC 256.

This draft amendment A1, if approved, will modify the European Standard EN 15273-2:2013. If this draft becomes an amendment, CEN members are bound to comply with the CEN/CENELEC Internal Regulations which stipulate the conditions for inclusion of this amendment into the relevant national standard without any alteration.

This draft amendment was established by CEN in three official versions (English, French, German). A version in any other language made by translation under the responsibility of a CEN member into its own language and notified to the CEN-CENELEC Management Centre has the same status as the official versions.

CEN members are the national standards bodies of Austria, Belgium, Bulgaria, Croatia, Cyprus, Czech Republic, Denmark, Estonia, Finland, Former Yugoslav Republic of Macedonia, France, Germany, Greece, Hungary, Iceland, Ireland, Italy, Latvia, Lithuania, Luxembourg, Malta, Netherlands, Norway, Poland, Portugal, Romania, Slovakia, Slovenia, Spain, Sweden, Switzerland, Turkey and United Kingdom.

Recipients of this draft are invited to submit, with their comments, notification of any relevant patent rights of which they are aware and to provide supporting documentation.

Warning : This document is not a European Standard. It is distributed for review and comments. It is subject to change without notice and shall not be referred to as a European Standard.



EUROPEAN COMMITTEE FOR STANDARDIZATION
COMITÉ EUROPÉEN DE NORMALISATION
EUROPÄISCHES KOMITEE FÜR NORMUNG

CEN-CENELEC Management Centre: Avenue Marnix 17, B-1000 Brussels

Contents

Page

European Foreword.....	3
1 Change to Clause 2, Normative references.....	4
2 Change to Subclause A.3.3.2, Kinematic reference profile of GI2	4
3 Change to Subclause A.3.4.1.3, Suspension displacement.....	4
4 Change to Subclause A.3.4.2.2, Suspension extension	4
5 Change to Subclause A.3.12.1, Reference profile for pantographs and non-insulated live parts on vehicle roof.....	4
6 Change to Subclause A.3.12.7, Other non-insulated roof-mounted parts.....	5
7 Change to Subclause B.3.3.1.1, Vehicles with clearance w independent of the position radius or linearly-variable as a function of the curve.....	5
8 Change to Subclause D.2.4.2, Bogie vehicles	5
9 Change to Clause F.5, Increase in the minimum height of the lower part of the rolling stock able to pass over marshalling humps and rail brakes	5
10 Change to Clause F.6, Increase in the minimum height of the lower part of the rolling stock unable to pass over marshalling humps and rail brakes	5
11 Change to Subclause H.2.1, Rules for the lower parts	5
12 Change to Subclause H.4.1.1.1, Sections located between the bogie centres	6
13 Changes to Subclause I.6.3, Requirement for adjusting the tilting system for vehicles fitted with active systems.....	6
14 Change to Subclause N.2.3, Suspension displacements.....	6
15 Change to Subclause N.3.8.2, Calculation of cant excess and deficiency	6
16 Change to Subclause P.2.1.5.1, Static reference profile for the lateral parts and upper parts	7
17 Change to Subclause P.2.1.5.2, Static reference profile for the lower parts	7
18 Change to Subclause P.2.1.6, Static gauge GED10	8
19 Change to Subclause P.3.1.6.1, Kinematic reference profile for the lateral parts and upper parts.....	8
20 Change to Subclause P.3.1.6.2, Kinematic reference profiles for the lower parts.....	9
21 Change to Subclause P.3.1.7, Kinematic gauge GED10.....	9
22 Changes to (informative) Annex ZA, Relationship between this European Standard and the essential requirements of EU Directive 2008/57/EC	10

European Foreword

This document (EN 15273-2:2013/FprA1:2016) has been prepared by Technical Committee CEN/TC 256 "Railway applications", the secretariat of which is held by DIN.

This document is currently subject to the Unique Acceptance Procedure.

This document has been prepared under a mandate given to CEN by the European Commission and the European Free Trade Association, and supports essential requirements of EU Directive 2008/57/CE.

For the relationship with EU Directive 2008/57/EC, see informative Annex ZA, which is an integral part of this document.

with:

“Insulating distance: see EN 15273-1:2013, Table G.2.”.

6 Change to Subclause A.3.12.7, Other non-insulated roof-mounted parts

Replace the contents of the subclause with the following:

“Non-insulated roof-mounted parts likely to be made live shall be installed so as to fall within the kinematic gauge less the electrical insulation distance (see A.3.12.1 and Figure A.14).”.

7 Change to Subclause B.3.3.1.1, Vehicles with clearance w independent of the position radius or linearly-variable as a function of the curve

Replace the existing Formula (B.7) with the following:

$$“ x_i = \frac{1}{750} \left(a \cdot n_i - n_i^2 + \frac{p^2}{4} - 100 \right) + w_{i(150)} - w_{i(250)} ”$$

8 Change to Subclause D.2.4.2, Bogie vehicles

Replace the sentence above Formula (D.37) with the following:

“Operation along a straight track predominates.”.

9 Change to Clause F.5, Increase in the minimum height of the lower part of the rolling stock able to pass over marshalling humps and rail brakes

Replace “ E_{as} ” and “ E_{au} ” with “ E_{ai} ” and “ E_{aa} ”.

10 Change to Clause F.6, Increase in the minimum height of the lower part of the rolling stock unable to pass over marshalling humps and rail brakes

Replace “ E'_{as} ” with “ E'_{ai} ”.

11 Change to Subclause H.2.1, Rules for the lower parts

Replace the fourth clause:

“Vertical displacements to be considered for the lower parts follow the rules for gauge G1.”.

with:

“Vertical displacements to be considered for Zone B are equal to those obtained for Zone A, and those for Zone C are equal to those obtained for Zone D.”.

EN 15273-2:2013/FprA1:2016 (E)

12 Change to Subclause H.4.1.1.1, Sections located between the bogie centres

Replace the sentence above Formula (H.3) with the following:

“Operation along a curved track predominates.”

13 Changes to Subclause I.6.3, Requirement for adjusting the tilting system for vehicles fitted with active systems

In the list, in entry a), replace “ $I'p$, $I'c$ and E ” with “ $I'p$ and $I'c$ ”.

Replace the existing Formula (I.48) with the following:

$$\frac{I'_p}{I_p} = \frac{I'_c}{I_c} \text{ ”}$$

14 Change to Subclause N.2.3, Suspension displacements

Add the following Note under the first clause:

“

NOTE Unlike the symbols used in this Standard, the parameters z and z_0 here are tilting angles, expressed in radians.

”.

In the first paragraph, in the second entry of the list, replace “suspension roll displacement (z_0)” with “suspension roll angle (z_0) in radians.”.

15 Change to Subclause N.3.8.2, Calculation of cant excess and deficiency

Add the following Note under the first clause:

“

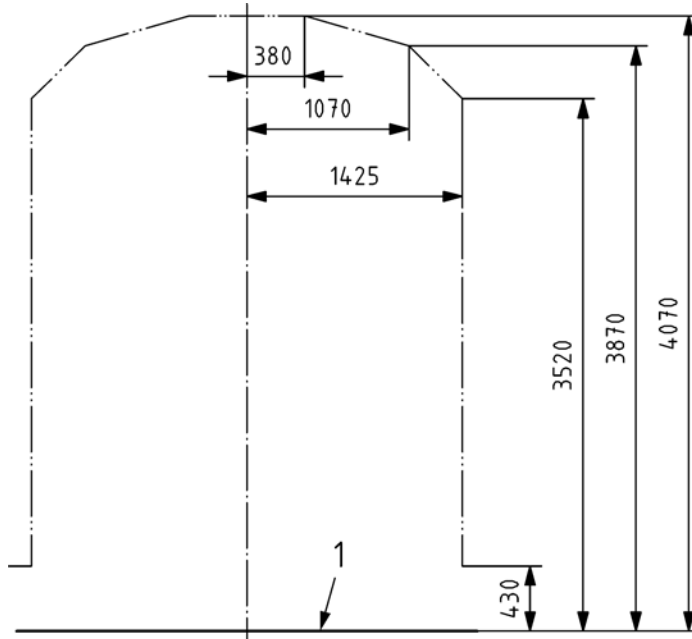
NOTE Unlike the symbols used elsewhere in this Standard, the cant excess is labelled here as l_{\min} , and the cant $D = |I|$ (absolute value of I) is taken into consideration to carry out the calculations.

”.

16 Change to Subclause P.2.1.5.1, Static reference profile for the lateral parts and upper parts

Replace the existing Figure P.6 with the following:

“

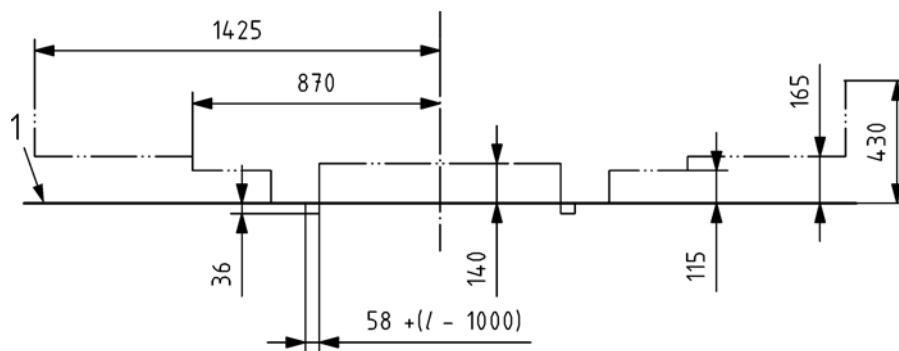


”

17 Change to Subclause P.2.1.5.2, Static reference profile for the lower parts

Replace the existing Figure P.7 with the following:

“



”