
**Laminate floor coverings —
Determination of abrasion resistance**

*Revêtements de sol stratifiés — Détermination de la résistance à
l'abrasion*

**iTeh STANDARD PREVIEW
(standards.iteh.ai)**

[ISO 24338:2014](https://standards.iteh.ai/catalog/standards/sist/0ccf7963-9f58-4176-80b5-58e37afiddff4/iso-24338-2014)

<https://standards.iteh.ai/catalog/standards/sist/0ccf7963-9f58-4176-80b5-58e37afiddff4/iso-24338-2014>



iTeh STANDARD PREVIEW
(standards.iteh.ai)

ISO 24338:2014

<https://standards.iteh.ai/catalog/standards/sist/0ccf7963-9f58-4176-80b5-58e37afiddff4/iso-24338-2014>



COPYRIGHT PROTECTED DOCUMENT

© ISO 2014

All rights reserved. Unless otherwise specified, no part of this publication may be reproduced or utilized otherwise in any form or by any means, electronic or mechanical, including photocopying, or posting on the internet or an intranet, without prior written permission. Permission can be requested from either ISO at the address below or ISO's member body in the country of the requester.

ISO copyright office
Case postale 56 • CH-1211 Geneva 20
Tel. + 41 22 749 01 11
Fax + 41 22 749 09 47
E-mail copyright@iso.org
Web www.iso.org

Published in Switzerland

Contents

	Page
Foreword.....	iv
1 Scope.....	1
2 Normative references.....	1
3 Apparatus.....	1
3.1 Testing machine (for methods A and B) (see Figure 1).....	1
3.2 Grit feeder and accessories (only for method B).....	4
3.3 Additional material or equipment (methods A and B).....	7
4 Test specimens.....	7
5 Procedure of method A.....	8
5.1 General.....	8
5.2 Preparation of test specimens and abrasive papers.....	8
5.3 Preparation of abrasive wheels.....	9
5.4 Determination of the abrasion rate of abrasive paper.....	9
5.5 Abrasion of test specimen.....	9
5.6 Expression of results.....	10
5.7 Test report.....	10
6 Procedure of method B.....	10
6.1 General.....	10
6.2 Maintenance of the abrading wheels.....	11
6.3 Operation of the abrader.....	11
6.4 Calibration.....	11
6.5 Abrasion of test specimen.....	12
6.6 Expression of results.....	13
6.7 Test report.....	13
Annex A (normative) Calibration and maintenance of abrasion equipment.....	14
Annex B (normative) Measurement of shore A hardness.....	18
Bibliography.....	19

Foreword

ISO (the International Organization for Standardization) is a worldwide federation of national standards bodies (ISO member bodies). The work of preparing International Standards is normally carried out through ISO technical committees. Each member body interested in a subject for which a technical committee has been established has the right to be represented on that committee. International organizations, governmental and non-governmental, in liaison with ISO, also take part in the work. ISO collaborates closely with the International Electrotechnical Commission (IEC) on all matters of electrotechnical standardization.

The procedures used to develop this document and those intended for its further maintenance are described in the ISO/IEC Directives, Part 1. In particular the different approval criteria needed for the different types of ISO documents should be noted. This document was drafted in accordance with the editorial rules of the ISO/IEC Directives, Part 2 (see www.iso.org/directives).

Attention is drawn to the possibility that some of the elements of this document may be the subject of patent rights. ISO shall not be held responsible for identifying any or all such patent rights. Details of any patent rights identified during the development of the document will be in the Introduction and/or on the ISO list of patent declarations received (see www.iso.org/patents).

Any trade name used in this document is information given for the convenience of users and does not constitute an endorsement.

For an explanation on the meaning of ISO specific terms and expressions related to conformity assessment, as well as information about ISO's adherence to the WTO principles in the Technical Barriers to Trade (TBT) see the following URL: [Foreword — Supplementary information](#).

The committee responsible for this document is ISO/TC 219, *Floor coverings*.

This second edition cancels and replaces the ~~first edition~~ (ISO 24338:2006) of which has been technically revised.

<https://standards.iteh.ai/catalog/standards/sist/0ccf7963-9f58-4176-80b5-58e37afddff4/iso-24338-2014>

Laminate floor coverings — Determination of abrasion resistance

1 Scope

This International Standard specifies two methods (A and B) for measuring abrasion of laminate floor covering elements. The tests described measure the ability of the surface layer to resist abrasive wear-through.

Abrasion, according to method A, is achieved by rotating a test specimen in contact with a pair of loaded cylindrical wheels covered with specified abrasive paper. The resistance to wear, according to method B, is evaluated by abrading the face of test pieces with a specified abrasive applied by means of two loaded wheels. The number of revolutions of the test specimen required to cause a defined degree of abrasion is measured by both methods.

NOTE The precision of the methods is not known. When inter-laboratory data become available, a precision statement will be added.

2 Normative references

The following documents, in whole or in part, are normatively referenced in this document and are indispensable for its application. For dated references, only the edition cited applies. For undated references, the latest edition of the referenced document (including any amendments) applies.

ISO 48, *Rubber, vulcanized or thermoplastic — Determination of hardness (hardness between 10 IRHD and 100 IRHD)* <https://standards.iteh.ai/catalog/standards/sist/0ccf7963-9f58-4176-80b5-58e37afddff4/iso-24338-2014>

ISO 868, *Plastics and ebonite — Determination of indentation hardness by means of a durometer (Shore hardness)*

ISO 6506-1, *Metallic materials — Brinell hardness test — Part 1: Test method*

ISO 7267-2, *Rubber-covered rollers — Determination of apparent hardness — Part 2: Shore-type durometer method*

ASTM D785, *Standard Test Method for Rockwell Hardness of Plastics and Electrical Insulating Materials*

3 Apparatus

3.1 Testing machine (for methods A and B) (see [Figure 1](#))

3.1.1 Test specimen holder (for methods A and B)

Disc-shaped holder with a diameter of approximately 105 mm (item 7 in [Figure 1](#)), which rotates in a horizontal plane with a permitted deviation of ± 2 mm/m at a frequency of (60 ± 2) rotations per minute and to which the test specimen (item 6 in [Figure 1](#)) can be clamped with a clamping screw (item 5 in [Figure 1](#)).

3.1.2 Holding and lifting device (for methods A and B)

Holding and lifting device for the abrasive wheels, so constructed that each wheel exerts a force of $(5,4 \pm 0,2)$ N (Method A) or $(10 \pm 0,2)$ N (Method B) on the test specimen.

For Method B, a counterweight of (150 ± 3) g is required to counterbalance the mass of the leather abrading wheel (see [3.2.3](#)). A second pair of leather abrading wheels may be used for this purpose.

The calibration and maintenance of the Taber abrader arms should be carried out according to [Annex A](#).

3.1.3 Rubber covered abrasive wheels (for method A)

Two cylindrical rubber-covered wheels of $(12,7 \pm 0,1)$ mm width and 50 mm diameter, which rotate freely about an axis (item 3 in [Figure 1](#)). The curved surface of the wheels, to a depth of 6 mm, shall be made of rubber (item 2) with a hardness of (65 ± 3) IRHD (according to ISO 48) or (65 ± 3) Shore A (according to ISO 7267-2). A description of the measurement and of a suitable measurement setup is shown in [Annex B](#).

The inside faces of the wheels shall be $(52,5 \pm 0,2)$ mm, apart and equally spaced $((26,25 \pm 0,10)$ mm) from the centre-line of the abrader head. The axis of the wheels shall be $(19,05 \pm 0,3)$ mm from the vertical axis of the test specimen holder.

3.1.4 Abrasive paper strips (for method A)

Abrasive strips of $(12,7 \pm 0,1)$ mm wide in the machine direction and approximately 160 mm long shall be used (item 1 in [Figure 1](#)).¹⁾ They shall meet the following requirements:

- weight: 70 g/m² to 100 g/m²;
- open coated 180 grit aluminium oxide (Al₂O₃), with a particle size that will pass through a 100 µm aperture sieve and be retained by a 63 µm aperture sieve;
- glue bonded;
- adhesive backing.

iTeh STANDARD PREVIEW
(standards.iteh.ai)

3.1.5 Calibration plates (for method A)

Rolled zinc sheet, with a thickness of $(0,8 \pm 0,1)$ mm and a Brinell hardness of (48 ± 2) (according to ISO 6506-1, with a ball diameter of 5 mm and a load of 360 N), shall be used.²⁾ For type approval or verification purposes, the zinc plate shall not be used for more than 10 calibrations per side.

3.1.6 Suction device (for method A)

Two suction nozzles (item 4 in [Figure 1](#)) shall be so fitted that they cover the abraded area of the test specimen. One nozzle shall be situated between the wheels, the other diametrically opposite. The centres of the nozzles shall be 77 mm apart and $(2 \pm 0,5)$ mm from the surface of the test specimen. When the nozzles are closed, there shall be a vacuum of 1,5 kPa to 1,6 kPa.

NOTE 1 It is important to ensure that the abrasive wheels are in good condition, as variations in flatness, hardness, regularity, roundness, and width can significantly affect the test result.

NOTE 2 It is important that the dimensions and tolerances in [3.1.6](#) and in [Figure 1](#) are met as deviations can lead to errors exceeding 100 %. See [Annex B](#) for more information.

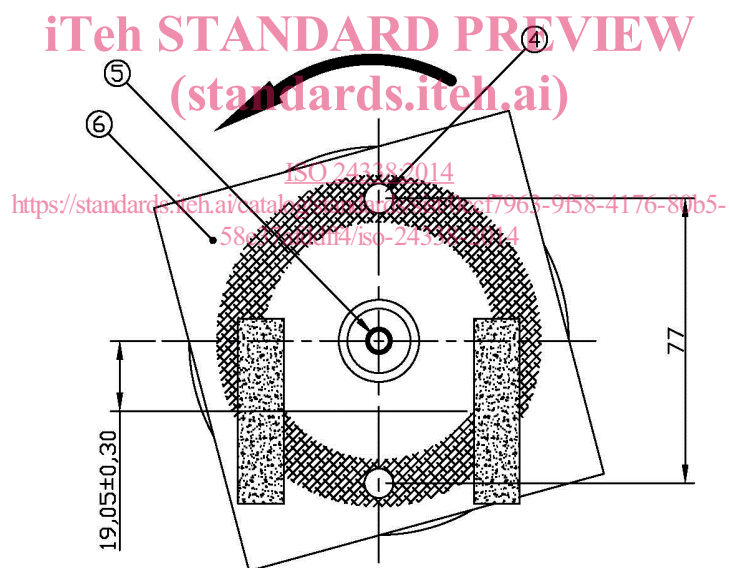
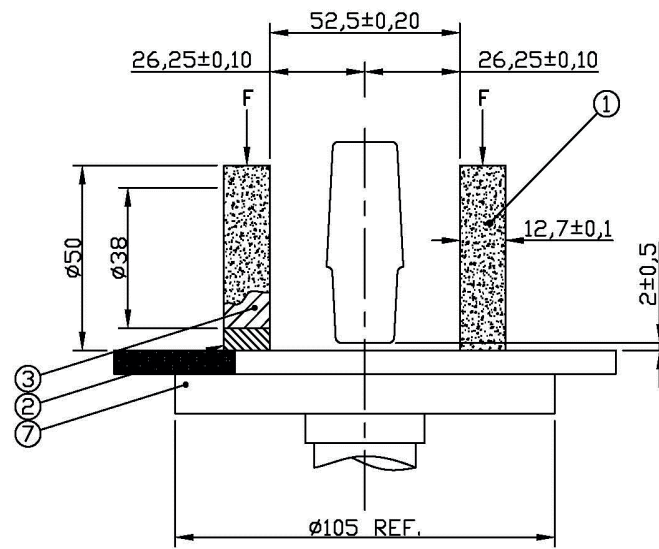
3.1.7 Revolution-counter (for methods A and B)

A revolution counter is used to record the number of revolutions of the specimen holder.

1) The abrasive paper strips "S42", made by TABER Industries, are an example of a suitable product available commercially. This information is given for the convenience of users of this International Standard and does not constitute an endorsement by ISO of this product. Equivalent products may be used if they can be shown to lead to the same results.

2) Taber S-34 made by TABER Industries 455 Bryant Street, North Tonawanda, New York 14120 USA is an example of a suitable equipment available commercially. This information is given for the convenience of users of this International Standard and does not constitute an endorsement by ISO of this product. Equivalent products may be used if they can be shown to lead to the same results.

Dimensions in millimetres



Key

- 1 abrasive paper
- 2 rubber
- 3 abrasive wheel
- 4 suction nozzle
- 5 clamping screw
- 6 specimen
- 7 specimen holder disc

Figure 1 — Abrasion resistance testing machine

3.2 Grit feeder and accessories (only for method B)

The grit feeder shall have a minimum storage capacity of about 200 g of grit and it shall be possible to open the feeder at its top and at its bottom. The bottom opening shall be positioned (10 ± 1) mm above the face of the test piece and have a length of (16 ± 1) mm and a width of $(3,18 \pm 0,38)$ mm). The length of the bottom opening shall be installed radially to the test specimen holder. A device in the grit feeder shall ensure a regular flow. The feeder shall also be equipped with a device that ensures an immediate stop of the feeding when required (see [Figure 2](#) and [Figure 3](#)).

3.2.1 Vacuum cleaning device³⁾

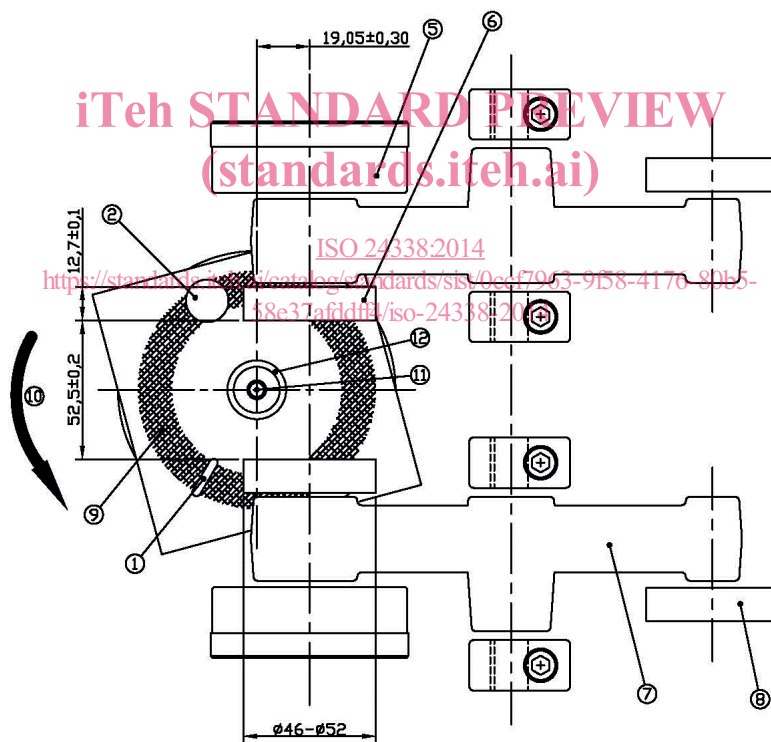
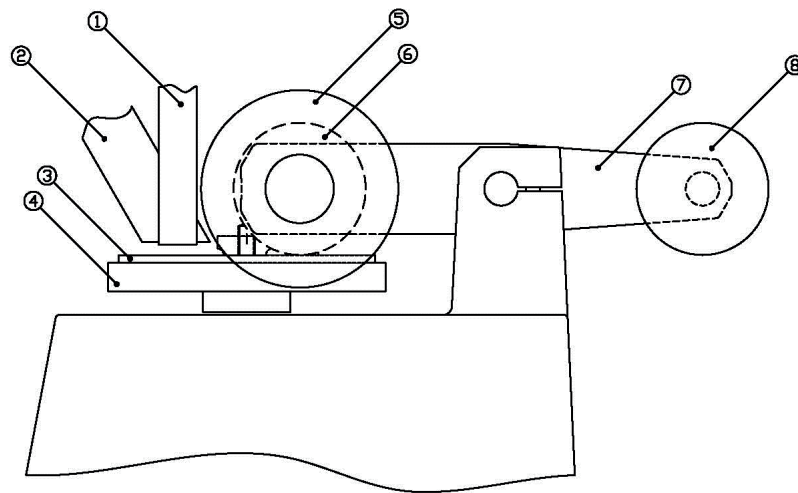
A suction nozzle, positioned (3 ± 2) mm above the track to be abraded, shall be installed in the axial vertical plane on the left wheel after the abrasive grit passes under the wheel (relative to the rotation direction, see [Figure 3](#)). The vacuum power shall be set at a level that removes all dust and debris.



Figure 2 — Example of a Taber Abrader with Grit Feeder

3) Equipment of this type, Taber Abrader and Taber Grit Feeder, are made by TABER Industries, 455 Bryant Street, North Tonawanda, New York 14120 USA. This information is given for the convenience of users of this International Standard and does not constitute an endorsement by ISO of this product.

Dimensions in millimetres



Key

- | | |
|-------------------|--------------------------|
| 1 grit nozzle | 7 abrader arm |
| 2 suction nozzle | 8 wearing surface |
| 3 test piece | 9 counterweight |
| 4 specimen holder | 10 direction of rotation |
| 5 testing weight | 11 clamping screw |
| 6 abrading wheel | 12 nut |

Figure 3 — Drawing of an abrader with grit feeder

3.2.2 Abrading material

Abrasive grain (bauxite based, electric arc furnaced aluminium oxide) with a chemical composition according to [Table 1](#) shall be used.⁴⁾ The abrasive mineral has a specific mass of 3,96 g/cm³ and a Knoop hardness of 21 kN/mm². The medium grain shape of the mineral has a bulk density in the range of 1,51 g/cm³ to 1,62 g/cm³ according to FEPA standard 44-D. Particle size distribution ranges between 45 and 75 µm with a reduced fines portion according to [Table 2](#) determined according to FEPA standard 42-D.

Table 1 — Chemical composition

Type of oxide	Al ₂ O ₃	Fe ₂ O ₃	SiO ₂	TiO ₂	CaO	ZrO ₂	MgO
Mass-%	>95	<0,30	<0,90	2,4 to 3,0	<0,30	<0,30	<0,30

Table 2 — Grain distribution

Sieve no.	170	200	270	270 to 325	>325
Grading in µm	90	75	53	45	
Grain distribution in %	0	0 to 5	≥45	≥80	0 to 10

The abrading material shall be stored in a dry place and shall be used only once. It shall not be sieved before use.

iTeh STANDARD PREVIEW
(standards.iteh.ai)

3.2.3 Leather abrading wheels⁵⁾

Two cylindrical wheels, which turn freely around their axis, with a nominal diameter of 44,4 mm and a width of 12,7 mm. They are fitted with a leather strip of (12,7 ± 0,1) mm wide and with a minimum thickness of 1,5 mm. The overall diameter of the wheels, with leather strips, shall not exceed 52 mm or be less than 46 mm.

The hardness of the leather strips shall be suitable for the purpose. It is measured according to ISO 868 with a Shore-hardness meter of Type A with the following deviation:

- the Shore-A hardness is measured at four points in the middle of the tire tread of the abrading wheels (deviation from ISO 868, 5.1, 5.2, and 8.1).

The hardness of the leather is suitable if all the results are contained within the range A/1:85 to A/1:95.

The distance between the internal faces of the wheels shall be (52,5 ± 0,2) mm, their common axis being set, by (19,05 ± 0,3) mm nominally, off the axis of the specimen holder. The axis of rotation of the test piece shall be equidistant from the two wheels.

Prior to testing, new abrading wheels shall be preconditioned: Subject new wheels to an initial 2 000 cycle test following the procedure described in [6.2](#).

3.2.4 Stopwatch

A stopwatch accurate to ±0,1 s.

4) The abrading material “ALODUR ESK 240 (EN 14354)”, made by Treibacher Schleifmittel, Postfach 1, A-9523 Villach-Landskron Seebach 2, Austria, is an example of a suitable product available commercially. This information is given for the convenience of users of this International Standard and does not constitute an endorsement by ISO of this product. Equivalent products may be used if they can be shown to lead to the same results.

5) The abrading wheels “S-39”, made by TABER Industries are an example of a suitable product available commercially. This information is given for the convenience of users of this International Standard and does not constitute an endorsement by ISO of this product. Equivalent products may be used if they can be show to lead to the same results.

3.2.5 Grit collection container

A container of known mass to collect the grit when calibrating the grit feeder.

3.2.6 Calibration plates⁶⁾

Calibration plates made of cell-cast acrylics with Rockwell Hardness M 94 according to ASTM D785.

3.2.7 Transparent template to evaluate the wear of the abraded area

A transparent template shall be used for visual observation of wear-through. Each quadrant shall be divided into four sectors of 22,5° (see [Figure 4](#)).

NOTE There is no commercial source available. This template can be easily made from a transparent film

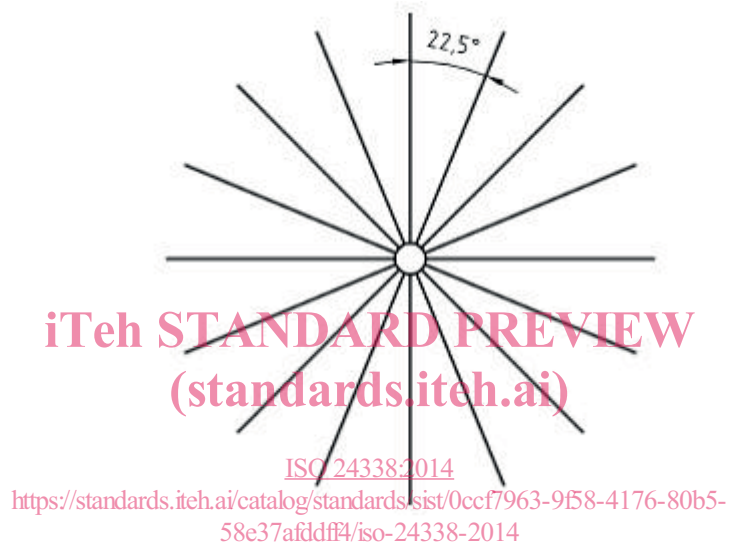


Figure 4 — Transparent template for visual observation of wear-through

3.3 Additional material or equipment (methods A and B)

3.3.1 Weighing equipment

For determining the mass loss of the zinc plate by the sand paper or calibrating the grit flow of the abrading material, weighing equipment with an accuracy of ± 1 mg is needed.

3.3.2 Conditioning chamber

The conditioning chamber shall be able to maintain a standard climate of (23 ± 2) °C and (50 ± 5) % relative humidity.

4 Test specimens

For each method one laminate floor covering element is needed. Take from this element three test specimens, measuring approximately 100 mm \times 100 mm:

- two centred 10 mm in from the short edges;

6) The calibration plates “S38”, made by TABER Industries, are an example of a suitable product available commercially. This information is given for the convenience of users of this International Standard and does not constitute an endorsement by ISO of this product. Equivalent products may be used if they can be shown to lead to the same results.