



SLOVENSKI STANDARD

SIST ISO 6020-3:2016

01-maj-2016

Nadomešča:
SIST ISO 6020-3:1997

Fluidna tehnika - Hidravlika - Vgradne mere za enosmerne valje vrste 16 MPa (160 barov) - 3. del: Kompaktna vrsta s premerom od 250 mm do 500 mm

Hydraulic fluid power - Mounting dimensions for single rod cylinders, 16 MPa (160 bar) series - Part 3: Compact series with bores from 250 mm to 500 mm

iTeh STANDARD PREVIEW
(standards.iteh.ai)

Transmissions hydrauliques - Dimensions d'interchangeabilité des vérins 16 MPa (160 bar) à simple tige - Partie 3: Série compacte, alésages de 250 mm à 500 mm

<https://standards.iteh.ai/catalog/standards/sist/53fa1969-84f2-4aa1-b8bf-69a0e2d9c594/sist-iso-6020-3-2016>

Ta slovenski standard je istoveten z: ISO 6020-3:2015

ICS:

23.100.20 Hidravlični valji Cylinders

SIST ISO 6020-3:2016 **en**

iTeh STANDARD PREVIEW
(standards.iteh.ai)

[SIST ISO 6020-3:2016](#)

<https://standards.iteh.ai/catalog/standards/sist/53faf969-84f2-4aa1-b8bf-69a0e2d9c594/sist-iso-6020-3-2016>

INTERNATIONAL
STANDARDISO
6020-3Second edition
2015-08-01

**Hydraulic fluid power — Mounting
dimensions for single rod cylinders,
16 MPa (160 bar) series —**

Part 3:

**Compact series with bores from 250
mm to 500 mm**

iTeh STANDARD PREVIEW

(standards.iteh.ai)
*Transmissions hydrauliques — Dimensions d'interchangeabilité des
vérins 16 MPa (160 bar) à simple tige —**Partie 3: Série compacte, alésages de 250 mm à 500 mm*<https://standards.iteh.ai/catalog/standards/sist/53fa1969-84f2-4aa1-b8bf-69a0e2d9c594/sist-iso-6020-3-2016>Reference number
ISO 6020-3:2015(E)

© ISO 2015

iTeh STANDARD PREVIEW
(standards.iteh.ai)

SIST ISO 6020-3:2016

<https://standards.iteh.ai/catalog/standards/sist/53fa1969-84f2-4aa1-b8bf-69a0e2d9c594/sist-iso-6020-3-2016>



COPYRIGHT PROTECTED DOCUMENT

© ISO 2015, Published in Switzerland

All rights reserved. Unless otherwise specified, no part of this publication may be reproduced or utilized otherwise in any form or by any means, electronic or mechanical, including photocopying, or posting on the internet or an intranet, without prior written permission. Permission can be requested from either ISO at the address below or ISO's member body in the country of the requester.

ISO copyright office
Ch. de Blandonnet 8 • CP 401
CH-1214 Vernier, Geneva, Switzerland
Tel. +41 22 749 01 11
Fax +41 22 749 09 47
copyright@iso.org
www.iso.org

Contents

	Page
Foreword	iv
Introduction	v
1 Scope	1
2 Normative references	1
3 Terms and definitions	1
4 Dimensions	1
5 Bore sizes	2
6 Piston stroke tolerances	2
7 Mounting styles	2
8 Piston rod characteristics	2
9 Identification statement (reference to this part of ISO 6020)	2
Bibliography	13

iTeh STANDARD PREVIEW (standards.iteh.ai)

[SIST ISO 6020-3:2016](https://standards.iteh.ai/catalog/standards/sist/53fa1969-84f2-4aa1-b8bf-69a0e2d9c594/sist-iso-6020-3-2016)

<https://standards.iteh.ai/catalog/standards/sist/53fa1969-84f2-4aa1-b8bf-69a0e2d9c594/sist-iso-6020-3-2016>

ISO 6020-3:2015(E)

Foreword

ISO (the International Organization for Standardization) is a worldwide federation of national standards bodies (ISO member bodies). The work of preparing International Standards is normally carried out through ISO technical committees. Each member body interested in a subject for which a technical committee has been established has the right to be represented on that committee. International organizations, governmental and non-governmental, in liaison with ISO, also take part in the work. ISO collaborates closely with the International Electrotechnical Commission (IEC) on all matters of electrotechnical standardization.

The procedures used to develop this document and those intended for its further maintenance are described in the ISO/IEC Directives, Part 1. In particular the different approval criteria needed for the different types of ISO documents should be noted. This document was drafted in accordance with the editorial rules of the ISO/IEC Directives, Part 2 (see www.iso.org/directives).

Attention is drawn to the possibility that some of the elements of this document may be the subject of patent rights. ISO shall not be held responsible for identifying any or all such patent rights. Details of any patent rights identified during the development of the document will be in the Introduction and/or on the ISO list of patent declarations received (see www.iso.org/patents).

Any trade name used in this document is information given for the convenience of users and does not constitute an endorsement.

For an explanation on the meaning of ISO specific terms and expressions related to conformity assessment, as well as information about ISO's adherence to the WTO principles in the Technical Barriers to Trade (TBT) see the following URL: [Foreword - Supplementary information](#)

The committee responsible for this document is ISO/TC 131, *Fluid power systems*, Subcommittee SC 3, *Cylinders*.

This second edition cancels and replaces the first edition (ISO 6020-3:1994), which has been technically revised.

ISO 6020 consists of the following parts, under the general title *Hydraulic fluid power — Mounting dimensions for single rod cylinders, 16 MPa (160 bar) series*:

- *Part 1: Medium series*
- *Part 2: Compact series*
- *Part 3: Compact series with bores from 250 mm to 500 mm*

Introduction

In hydraulic fluid power systems, power is transmitted and controlled through a liquid under pressure within an enclosed circuit.

One component of such systems is the fluid power cylinder. This is a device that converts power into linear mechanical force and motion. It consists of a movable element, e.g. a piston and piston rod, operating within a cylindrical bore.

iTeh STANDARD PREVIEW (standards.iteh.ai)

[SIST ISO 6020-3:2016](https://standards.iteh.ai/catalog/standards/sist/53fa1969-84f2-4aa1-b8bf-69a0e2d9c594/sist-iso-6020-3-2016)

<https://standards.iteh.ai/catalog/standards/sist/53fa1969-84f2-4aa1-b8bf-69a0e2d9c594/sist-iso-6020-3-2016>

iTeh STANDARD PREVIEW
(standards.iteh.ai)

SIST ISO 6020-3:2016

<https://standards.iteh.ai/catalog/standards/sist/53faf969-84f2-4aa1-b8bf-69a0e2d9c594/sist-iso-6020-3-2016>

Hydraulic fluid power — Mounting dimensions for single rod cylinders, 16 MPa (160 bar) series —

Part 3: Compact series with bores from 250 mm to 500 mm

1 Scope

This part of ISO 6020 establishes metric mounting dimensions for single rod compact series hydraulic cylinders with bores from 250 mm to 500 mm for use at 16 MPa (160 bar¹), as required for interchangeability of commonly used hydraulic cylinders.

NOTE 1 This part of ISO 6020 allows manufacturers of hydraulic equipment flexibility in the design of metric cylinders and does not restrict technical development, but does provide basic guidelines.

NOTE 2 The compact series dimensions are most applicable to square-head cylinders.

This part of ISO 6020 applies only to the dimensions of manufactured products. It does not apply to their functional characteristics.

iTeh STANDARD PREVIEW

2 Normative references (standards.iteh.ai)

The following documents, in whole or in part, are normatively referenced in this document and are indispensable for its application. For dated references, only the edition cited applies. For undated references, the latest edition of the referenced document (including any amendments) applies.

ISO 273, *Fasteners — Clearance holes for bolts and screws*

ISO 3320, *Fluid power systems and components — Cylinder bores and piston rod diameters and area ratios — Metric series*

ISO 4395, *Fluid power systems and components — Cylinder piston rod end types and dimensions*

ISO 5598, *Fluid power systems and components — Vocabulary*

ISO 6099, *Fluid power systems and components — Cylinders — Identification code for mounting dimensions and mounting types*

ISO 6162-1, *Hydraulic fluid power — Flange connectors with split or one-piece flange clamps and metric or inch screws — Part 1: Flange connectors, ports and mounting surfaces for use at pressures of 3,5 MPa (35 bar) to 35 MPa (350 bar), DN 13 to DN 127*

3 Terms and definitions

For the purposes of this document, the terms and definitions given in ISO 5598 apply.

4 Dimensions

4.1 Mounting dimensions for cylinders manufactured in accordance with this part of ISO 6020 shall be selected from [Tables 1 to 9](#). [Figures 1 to 9](#) show the mounting styles and relevant dimensions.

1) 1 bar = 0,1 MPa = 10⁵ Pa; 1 MPa = 1 N/mm².

ISO 6020-3:2015(E)

4.2 Tolerances for mounting dimensions shall be in accordance with [Table 10](#).

5 Bore sizes

The following bore sizes, in millimetres, are included in this compact series:

250 — 320 — 360²⁾ — 400 — 500

6 Piston stroke tolerances

The tolerance on piston strokes shall be as follows:

- piston strokes $\leq 1\ 250$ mm: $+2/-0$ mm;
- piston strokes $> 1\ 250$ mm and $\leq 3\ 150$ mm: $+5/-0$ mm;
- piston strokes $> 3\ 150$ mm and $\leq 8\ 000$ mm: $+8/-0$ mm.

7 Mounting styles

This part of ISO 6020 includes the following mounting styles, in accordance with ISO 6099:

- ME 11 — Head, square flange (see [Figure 2](#) and [Table 2](#));
- ME 12 — Cap, square flange (see [Figure 3](#) and [Table 3](#));
- MP 1 — Cap, fixed clevis (see [Figure 4](#) and [Table 4](#));
- MP 3 — Cap, fixed eye (see [Figure 5](#) and [Table 5](#));
- MP 5 — Cap, fixed eye with spherical plain bearing (see [Figure 6](#) and [Table 6](#));
- MT 1 — Head, integral trunnion (male) (see [Figure 7](#) and [Table 7](#));
- MT 2 — Cap, integral trunnion (male) (see [Figure 8](#) and [Table 8](#));
- MT 4 — Intermediate trunnion (male) with selectable position (see [Figure 9](#) and [Table 9](#)).

8 Piston rod characteristics

8.1 This part of ISO 6020 covers piston rods that have a shouldered male thread end (see [Figure 1](#) and [Table 1](#) for basic dimensions).

8.2 For rod end types, see ISO 4395.

9 Identification statement (reference to this part of ISO 6020)

It is strongly recommended for fabricators who elect to conform to this part of ISO 6020 to use the following statement in test reports, catalogues, and sales literature:

“Interchangeable hydraulic cylinder mounting dimensions selected in accordance with ISO 6020-3:2015, *Hydraulic fluid power — Mounting dimensions for single rod cylinders, 16 MPa (160 bar) series — Part 3: Compact series with bores from 250 mm to 500 mm*”.

2) Non-preferred size.

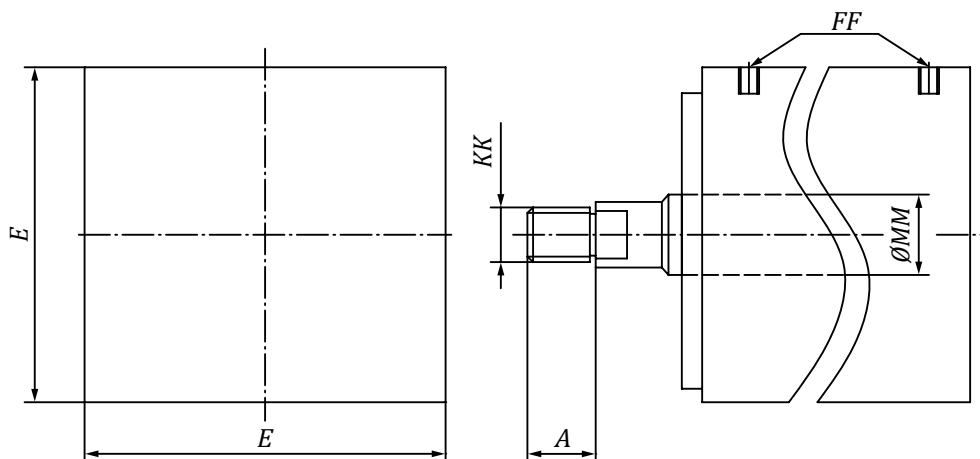


Figure 1 — General dimensions

Table 1 — General dimensions and part sizes

Dimensions in millimetres

Bore	Rod ^a MM	KK 6g	A max.	E max.	FF ^b
250	140	M100 × 3	112	320	DN 51
	180	M125 × 4	125		
320	180	M125 × 4	125	400	DN 64
	220	M160 × 4	160		
360 ^c	180	M125 × 4	125	450	DN 64
	250	M180 × 4	180		
400	220	M160 × 4	160	500	DN 64
	280	M200 × 4	200		
500	280	M200 × 4	200	630	DN 64
	360	M250 × 6	250		

^a Other piston rod sizes that appear in ISO 3320 may be used.

^b See ISO 6162-1 for flange port dimensions.

^c 360 mm bore is a non-preferred size.