



Designation: D2639 – 08

## Standard Test Method for

# Plastic Properties of Coal by the Constant-Torque Gieseler Plastometer<sup>1</sup>

This standard is issued under the fixed designation D2639; the number immediately following the designation indicates the year of original adoption or, in the case of revision, the year of last revision. A number in parentheses indicates the year of last reapproval. A superscript epsilon ( $\epsilon$ ) indicates an editorial change since the last revision or reapproval.

## 1. Scope

1.1 This test method covers a relative measure of the plastic behavior of coal when heated under prescribed conditions. This test method may be used to obtain semiquantitative values of the plastic properties of coals and blends used in carbonization and in other situations where determination of plastic behavior of coals is of practical importance.

1.2 The values stated in SI units are to be regarded as the standard. The values given in parentheses are for information only.

1.3 *This standard does not purport to address all of the safety concerns, if any, associated with its use. It is the responsibility of the user of this standard to establish appropriate safety and health practices and determine the applicability of regulatory limitations prior to use.*

## 2. Referenced Documents

2.1 *ASTM Standards:*<sup>2</sup>

D2013 Practice for Preparing Coal Samples for Analysis  
D2234/D2234M Practice for Collection of a Gross Sample of Coal

## 3. Terminology

3.1 *Definitions:*

3.1.1 *dial division per minute, n*—as used in this test method, a measure of stirrer rotation rate. There are 100 dial divisions for each full 360° rotation of the stirrer. Stirrer rotation rate is total dial divisions turned by the stirrer in a one minute time period.

<sup>1</sup> This test method is under the jurisdiction of ASTM Committee D05 on Coal and Coke and is the direct responsibility of Subcommittee D05.15 on Metallurgical Properties of Coal and Coke.

Current edition approved May 15, 2008. Published June 2008. Originally approved in 1967. Last previous edition approved in 2004 as D2639–04<sup>ε1</sup>. DOI: 10.1520/D2639-08.

<sup>2</sup> For referenced ASTM standards, visit the ASTM website, www.astm.org, or contact ASTM Customer Service at service@astm.org. For *Annual Book of ASTM Standards* volume information, refer to the standard's Document Summary page on the ASTM website.

3.1.2 *initial softening temperature, n*—as used in this test method, the temperature at which the stirrer rotation rate first reaches 1.0 dial divisions per minute.

3.1.3 *maximum fluidity, n*—as used in this test method, the measured maximum stirrer rotation rate, in dial divisions per minute.

3.1.4 *maximum fluidity temperature, n*—as used in this test method, the temperature at which stirrer rotation rate reaches a maximum value.

3.1.5 *plastic range, n*—difference between the solidification temperature and the initial softening temperatures.

3.1.6 *solidification temperature, n*—as used in this test method, the temperature at which the the first zero ddpm is reached after the last stirrer rotation.

## 4. Summary of Test Method

4.1 The plastometer measures the plastic properties of coals by the use of a constantly applied torque on a stirrer placed in a crucible into which the coal is charged. The crucible is immersed in a bath and the temperature increased uniformly. The rates of movement of the stirrer are recorded in relation to increase in temperature.

## 5. Significance and Use

5.1 Reliable values of the plastic properties of coals are used to predict or explain the behavior of a coal or blends during carbonization or in other processes such as gasification, liquefaction, and combustion.

## 6. Apparatus

6.1 *Gieseler Plastometer*—The apparatus shall consist of the following:

6.1.1 *Retort*—A steel retort consisting of four parts as shown in Fig. 1.

6.1.2 *Retort Crucible*, cylindrical,  $21.4 \pm 0.08$  mm ( $0.844 \pm 0.003$  in.) in inside diameter and 35.0 mm (1.38 in.) in depth, with exterior threads for joining the crucible to the crucible cover. The crucible shall have a  $2.38 \pm 0.02$ -mm ( $0.094 \pm 0.001$ -in.) diameter notch in the center of its inside base to serve as a seat for the stirrer.

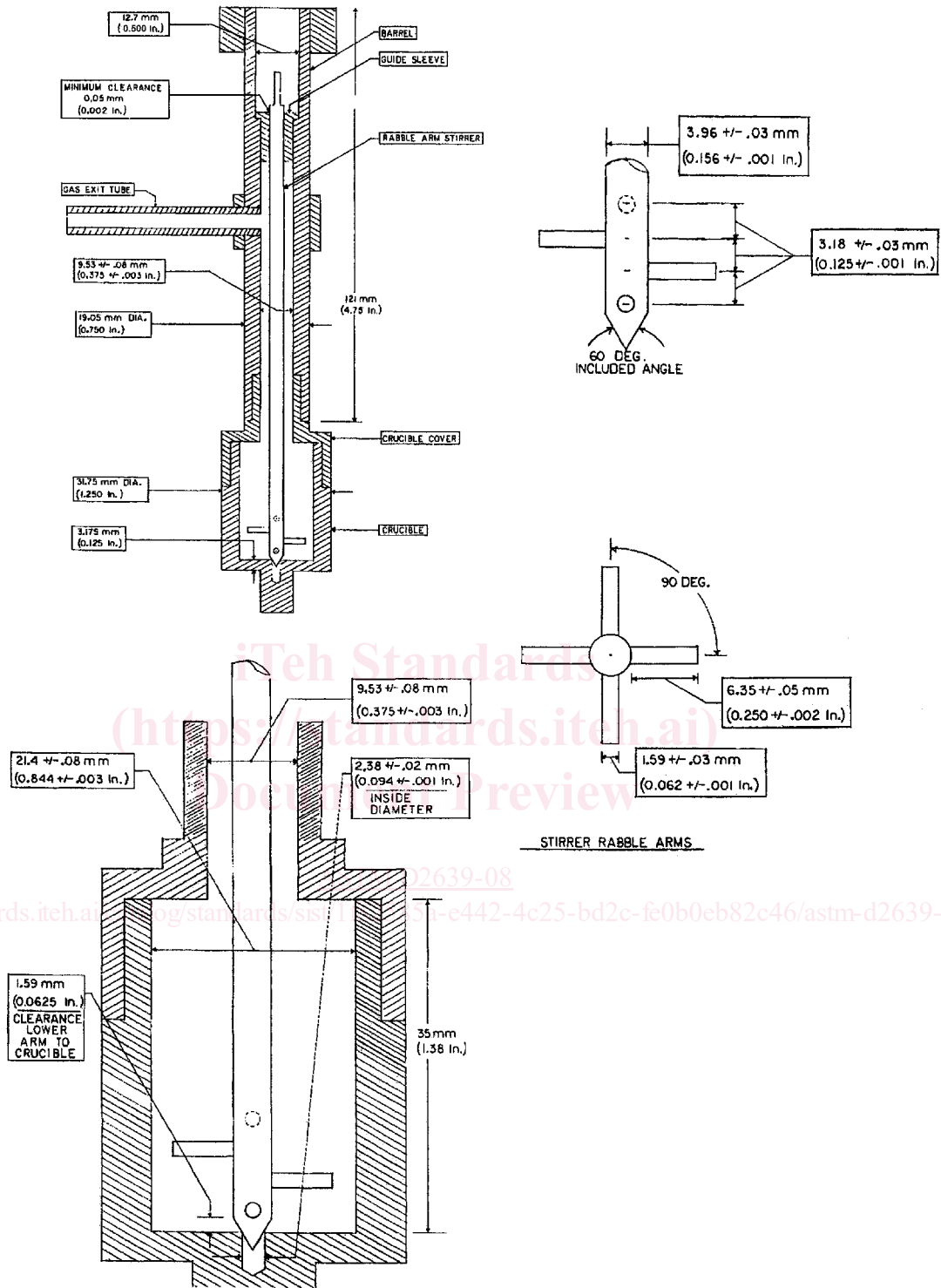


FIG. 1 Retort Assembly

FIG. 1 Retort Assembly

6.1.3 *Retort Crucible Cover*, with interior threads for joining the crucible cover to the crucible and exterior threads for joining the crucible cover to the barrel. The inside diameter of the hole which accommodates the stirrer is  $9.53 \pm 0.08$  mm ( $0.375 \pm 0.003$  in.).

6.1.4 *Barrel*, 121 mm (4.75 in.) long and having an inside diameter of  $9.53 \pm 0.08$  mm ( $0.375 \pm 0.003$  in.). The top end of the barrel shall be 12.7 mm (0.500 in.) in inside diameter to a depth sufficient to allow clearance for the axle of the plastometer head when the apparatus is assembled. A hole, fitted with a tube, shall be provided at the midpoint of the barrel so as to afford exit for the volatile products during a test.

6.1.5 *Steel Stirrer*, provided with a straight shaft  $3.96 \pm 0.03$  mm ( $0.156 \pm 0.001$  in.) in diameter and equipped with four rabble arms. The lower end of the stirrer shall have a  $60^\circ$  included angle. The rabble arms on the stirrer shall be  $1.59 \pm 0.03$  mm ( $0.0625 \pm 0.001$  in.) in diameter,  $6.35 \pm 0.05$  mm ( $0.250 \pm 0.002$  in.) in length, and shall be placed perpendicular to the shaft at  $90^\circ$  intervals around the shaft and  $3.18 \pm 0.03$  mm ( $0.125 \pm 0.001$  in.) apart center to center along the shaft. The middle two rabble arms shall be set at  $180^\circ$  to each other, and likewise, the remaining two arms  $180^\circ$  to each other. The lowest rabble arm shall be set in the shaft to give 1.59-mm (0.0625-in.) clearance between it and the bottom of the crucible when the stirrer is in place. The upper end of the stirrer shall be cut to fit into the slot on the lower end of the axle in the plastometer head.

6.1.6 *Guide Sleeve*, provided near the upper end of the stirrer to guide the latter within the barrel, with a clearance of at least 0.05 mm (0.002 in.).

6.2 *Plastometer Head*—The plastometer head shall consist of a fixed-speed motor connected directly to a hysteresis brake which is capable of adjustment from 29- to 2.90-g · cm (11.4- to 114-g · in.) torque. Each complete revolution, or 100-dial division, shall be recorded on a magnetic counter actuated by an electric eye or other suitable method. The torque shall be checked using a drive pulley, transfer pulley, monofilament line, and weights as shown in Fig. 2. Adjust the hysteresis brake torque to lift a 38.00- ± 0.1-g weight over one full rotation of the slotted axle and not lift a 42.00- ± 0.1-g weight over one full rotation of the slotted axle. The lifted weights include the variable weight of the monofilament line between the transfer pulley and the attached weight. All instruments should be checked in this manner at least once each week.

6.3 *Furnace*—An electrically heated furnace with suitable manual, or automatic, controls shall be provided so that a heating rate of  $3.0 \pm 0.1^\circ\text{C}/\text{min}$ , on an over-all basis, with not more than  $3.0 \pm 1.0^\circ\text{C}$  for any given minute can be maintained over a temperature range from 300 to  $550^\circ\text{C}$ . This temperature circuit should be checked and standardized periodically. The furnace shall contain a molten solder bath of approximately 50 % lead and 50 % tin composition. Temperature in the bath shall be measured with a suitable thermocouple in a 6.35-mm (0.250-in.) outside diameter protection tube immersed in the bath so that the tube touches the outside wall of the crucible, and the hot junction of the couple is at the same height as the center of the coal charge. A stirrer shall be used to agitate the solder. A suitable furnace is illustrated in Fig. 3.

6.4 *Loading Device*—The loading device shall be provided so that the coal may be packed uniformly in the crucible under a total packing load of 10 kg and designed in such a manner that, after compression, the crucible and its contents can easily be removed from the device without disturbing the contents. A suitable device is shown in Fig. 4. The use of a static weight of

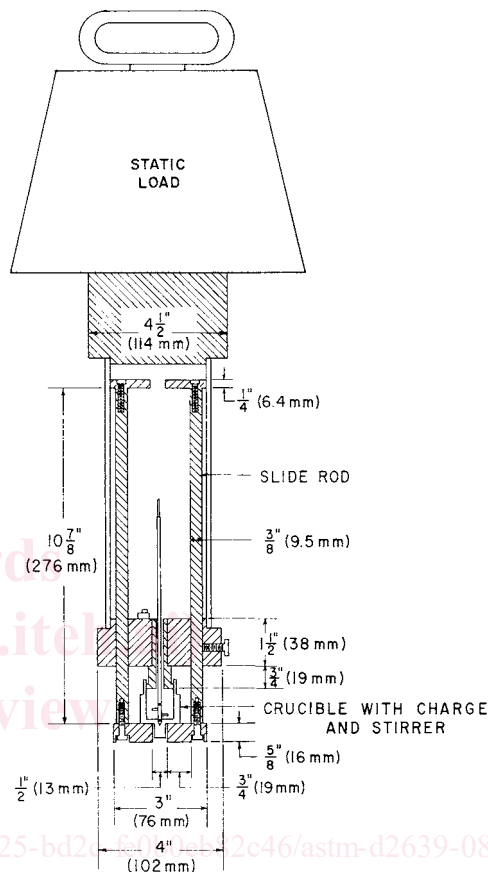


FIG. 4 Loading Device

9 kg together with a drop-weight of 1 kg dropped twelve times from a height of 114.3 mm (4.5 in.) is permissible as an alternative method of packing. The drop-weight arrangement is shown in Fig. 5. For coals that are difficult to pack, it is permissible to add one to three drops of benzene or toluene on the shaft of the stirrer near the surface of the coal before the weight is added.

## 7. Sample

7.1 Collect a representative gross sample of coal in accordance with Practice D2234/D2234M and prepare in accordance with Practice D2013. The 2.36 mm (No. 8) sieve sample from Table 1 in Practice D2013 shall constitute the laboratory sample.

## 8. Preparation of Sample

8.1 Air dry the sample prior to preparation. Spread the sample on tared pans, weigh, and air dry it at room temperature or at slightly elevated temperatures not exceeding  $15^\circ\text{C}$  above room temperature, until the moisture loss is less than 0.1 %/h.