
Preskusi požarne odpornosti in dimotesnosti vrat, zapor in oken, ki se odpirajo, ter elementov stavbnega okovja - 1. del: Preskus požarne odpornosti za vrata, zapore in okna, ki se odpirajo

Fire resistance and smoke control tests for door and shutter assemblies, openable windows and elements of building hardware - Part 1: Fire resistance test for door and shutter assemblies and openable windows

Feuerwiderstandsprüfungen und Rauchschutzprüfungen für Türen, Tore, Abschlüsse, Fenster und Baubeschläge - Teil 1: Feuerwiderstandsprüfungen für Türen, Tore, Abschlüsse und Fenster

Essais de résistance au feu et d'étanchéité aux fumées des portes, fermetures, fenêtres et éléments de quincailleries - Partie 1: Essais de résistance au feu des portes, fermetures et fenêtres

Ta slovenski standard je istoveten z: EN 1634-1:2014/prA1

ICS:

13.220.50	Požarna odpornost gradbenih materialov in elementov	Fire-resistance of building materials and elements
91.060.50	Vrata in okna	Doors and windows

SIST EN 1634-1:2014/oprA1:2016 **en,fr,de**

EUROPEAN STANDARD
NORME EUROPÉENNE
EUROPÄISCHE NORM

DRAFT
EN 1634-1:2014
prA1

June 2016

ICS 13.220.50; 91.060.50

English Version

Fire resistance and smoke control tests for door and shutter assemblies, openable windows and elements of building hardware - Part 1: Fire resistance test for door and shutter assemblies and openable windows

Essais de résistance au feu et d'étanchéité aux fumées des portes, fermetures, fenêtres et éléments de quincailleries - Partie 1: Essais de résistance au feu des portes, fermetures et fenêtres

Feuerwiderstandsprüfungen und Rauchschutzprüfungen für Türen, Tore, Abschlüsse, Fenster und Baubeschläge - Teil 1: Feuerwiderstandsprüfungen für Türen, Tore, Abschlüsse und Fenster

This draft amendment is submitted to CEN members for enquiry. It has been drawn up by the Technical Committee CEN/TC 127.

This draft amendment A1, if approved, will modify the European Standard EN 1634-1:2014. If this draft becomes an amendment, CEN members are bound to comply with the CEN/CENELEC Internal Regulations which stipulate the conditions for inclusion of this amendment into the relevant national standard without any alteration.

This draft amendment was established by CEN in three official versions (English, French, German). A version in any other language made by translation under the responsibility of a CEN member into its own language and notified to the CEN-CENELEC Management Centre has the same status as the official versions.

CEN members are the national standards bodies of Austria, Belgium, Bulgaria, Croatia, Cyprus, Czech Republic, Denmark, Estonia, Finland, Former Yugoslav Republic of Macedonia, France, Germany, Greece, Hungary, Iceland, Ireland, Italy, Latvia, Lithuania, Luxembourg, Malta, Netherlands, Norway, Poland, Portugal, Romania, Slovakia, Slovenia, Spain, Sweden, Switzerland, Turkey and United Kingdom.

Recipients of this draft are invited to submit, with their comments, notification of any relevant patent rights of which they are aware and to provide supporting documentation.

Warning : This document is not a European Standard. It is distributed for review and comments. It is subject to change without notice and shall not be referred to as a European Standard.



EUROPEAN COMMITTEE FOR STANDARDIZATION
COMITÉ EUROPÉEN DE NORMALISATION
EUROPÄISCHES KOMITEE FÜR NORMUNG

CEN-CENELEC Management Centre: Avenue Marnix 17, B-1000 Brussels

EN 1634-1:2014/prA1:2016 (E)

Contents		Page
European foreword.....		3
1	Modification to the Scope	4
2	Modifications to Clause 2, Normative references	4
3	Modification to Clause 3, Terms and definitions	4
4	Modification to Clause 5, Test conditions.....	4
5	Modification to Clause 6, Test specimen.....	4
6	Modification to Clause 8, Conditioning.....	4
7	Modifications to 9.1.2, Unexposed face thermocouples	4
8	Modification to Table 2	5
9	Modification to the Keys to Figures 11, 12 and 16	5
10	Modification to Figure 24	6
11	Modification to the Bibliography.....	6

European foreword

This document (EN 1634-1:2014/prA1:2016) has been prepared by Technical Committee CEN/TC 127 “Fire safety in buildings”, the secretariat of which is held by BSI.

This document is currently submitted to the CEN Enquiry.

This document has been prepared under a mandate given to CEN by the European Commission and the European Free Trade Association.

EN 1634-1:2014/prA1:2016 (E)

1 Modification to the Scope

Add the following paragraph to the end of the Scope:

"Doors tested in accordance with this European Standard and classified in accordance with EN 13501-2 may be accepted for lift landing door applications as an alternative to EN 81-58. EN 81-58 represents a specific test for lift landing doors and results in an alternative classification which may not be suitable for some other purposes as defined in National Regulations."

2 Modifications to Clause 2, Normative references

Undate EN 1363-1, EN 12519 and EN ISO 13943.

Delete the 5th reference to EN 14600.

3 Modification to Clause 3, Terms and definitions

In the first sentence, undate EN 1363-1, EN 12519 and EN ISO 13943.

4 Modification to Clause 5, Test conditions

In the first sentence, replace "EN 14600" with "EN 16034".

5 Modification to Clause 6, Test specimen

In 6.1, in the first sentence, delete "EN 14600 and".

6 Modification to Clause 8, Conditioning

In 8.2, replace "EN 14600" with "EN 16034".

7 Modifications to 9.1.2, Unexposed face thermocouples

In 9.1.2.1, add the following to the end of the NOTE: "(except building hardware which passes through the doorset or openable window)".

In 9.1.2.3.2, replace item b) with the following:

"b) one on the horizontal top member of the frame (≥ 30 mm wide) and any transom (≥ 30 mm wide) fitted, at mid width (100 mm away from the door joint of a multi-leaf doorset on the primary leaf side). The positioning of the transom thermocouples in vertical direction shall be symmetrical relative to the edges. See Figures 22 and 23 in terms of frame and Figures 23 and 24 in terms of transom;"

In 9.1.2.3.2, replace item c) with the following:

"c) one on the horizontal top member of the frame (≥ 30 mm wide) and any transom (≥ 30 mm wide) fitted, 50 mm in from each corner of the frame at the point of leaf entry. The positioning of the transom

thermocouples in vertical direction shall be symmetrical relative to the edges. See Figures 23 and 24 in terms of transom, Figure 16 for point of leaf entry and Figures 22 and 23 in terms of frame."

In the paragraph following item c) replace "20 mm" with "15 mm".

In 9.1.2.3.4, add the following paragraph to the end of the clause:

"Where the doorset is likely to be subjected to Extended Application procedures, the relevant Extended Application standard may specify specific additional thermocouples to be fitted to the specimen. These should be considered prior to testing and fitted if relevant in conjunction with the manufacturer's instructions."

8 Modification to Table 2

In row three, column three, add "a)" to relate to the table footnote as follows:

"

Table 2 — Type of doorset and direction to be tested to cover the opposite direction

Type of doorset	Direction to be tested to cover opposite direction	Integrity	Insulation	Radiation
Hinged or pivoted, timber leaf, timber frame	Opening into the furnace	yes	yes	yes
Hinged or pivoted, timber leaf, metal frame (no transom)	Opening into the furnace	yes	no	yes
Hinged, metal leaf, metal frame (not pivoted)	Opening away from Furnace	yes ^{a)}	no	yes
Rolling shutter	Barrel and supporting components fixed on the face of the supporting wall on the fire side	yes	no	no
Sliding/folding	Sliding/folding supporting components fixed on the face of the supporting wall on the fire side	yes	no	no
Operable fabric curtains	Not possible to define a scenario			
a) This only applies to doors without insulation in the core and with a movement restrictor at approximately mid-height on the hinge side.				

"

9 Modification to the Keys to Figures 11, 12 and 16

In the Keys to Figures 11 and 12 delete "p primary gaps" and replace it with "P primary gaps".

EN 1634-1:2014/prA1:2016 (E)

In the Key to Figure 16, after "*" no thermocouple on the frame from this side" add the following:

"

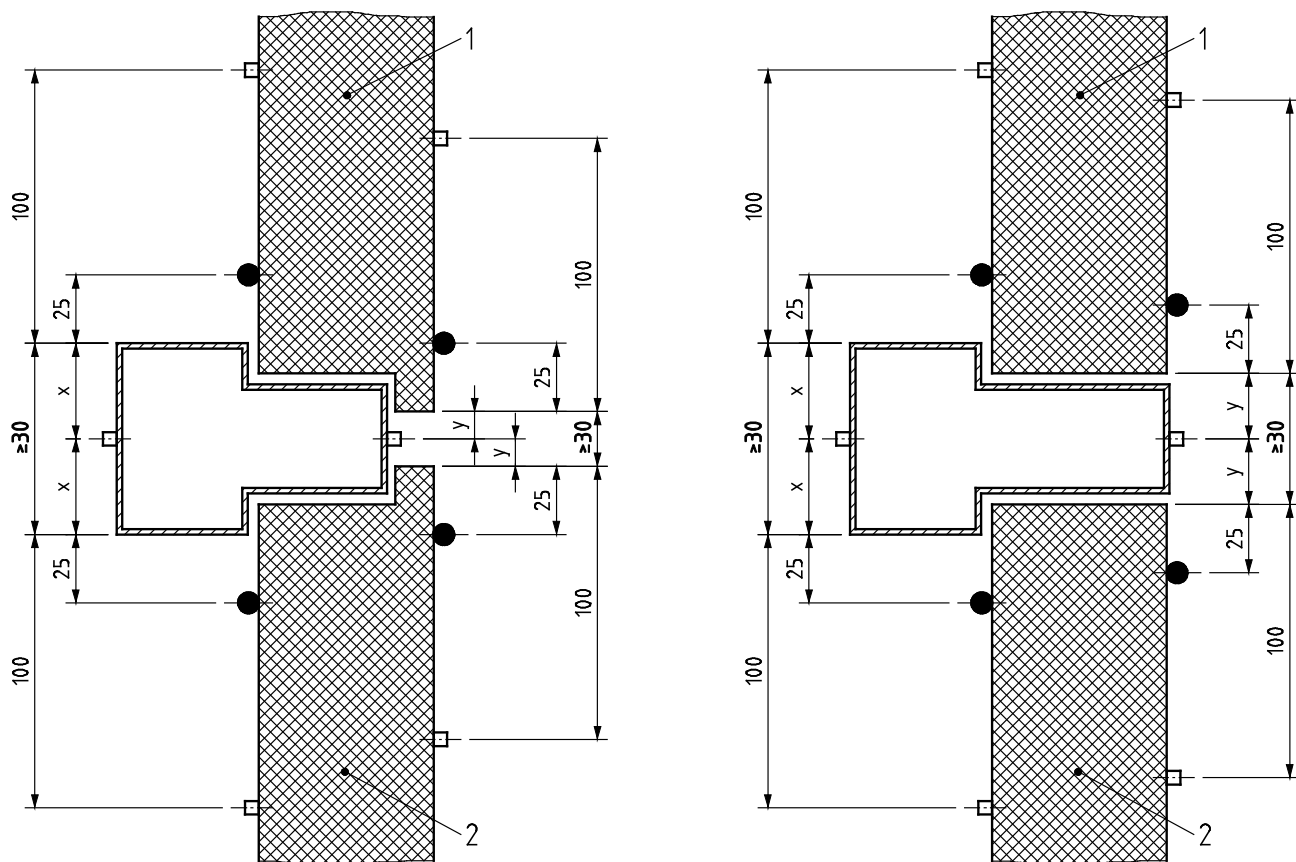
- thermocouples for maximum temperature rise
- additional thermocouples for maximum temperature rise (supplementary procedure)

"

10 Modification to Figure 24

Delete existing Figure 24 and replace it with the new one (the only difference is dimension "≥12" changed to "≥30" in four places):

"



"

11 Modification to the Bibliography

Replace "prEN 16034:2009, Pedestrian doorsets, industrial, commercial, garage doors and windows — Product standard, performance characteristics — Fire resistance and/or smoke control characteristics" with "EN 16034, Pedestrian doorsets, industrial, commercial, garage doors and openable windows — Product standard, performance characteristics — Fire resisting and/or smoke control characteristics" and move this reference to Clause 2.