
Hydraulic fluid power — Method for evaluating the buckling load of a hydraulic cylinder

*Transmissions hydrauliques — Méthode d'évaluation du flambage
d'un vérin*

ITeH STANDARD PREVIEW
(standards.iteh.ai)
Full standard:
<https://standards.iteh.ai/catalog/standards/sist/99bc312f-2546-4d67-acda-1824f5c0a5c0/iso-ts-13725-2016>

PROOF / ÉPREUVE



iTeh STANDARD PREVIEW
(standards.iteh.ai)
Full standard:
<https://standards.iteh.ai/catalog/standards/sist/9bc3f28f-2546-4d67-acda-1824f5c0a5c0/iso-ts-13725-2016>



COPYRIGHT PROTECTED DOCUMENT

© ISO 2016, Published in Switzerland

All rights reserved. Unless otherwise specified, no part of this publication may be reproduced or utilized otherwise in any form or by any means, electronic or mechanical, including photocopying, or posting on the internet or an intranet, without prior written permission. Permission can be requested from either ISO at the address below or ISO's member body in the country of the requester.

ISO copyright office
Ch. de Blandonnet 8 • CP 401
CH-1214 Vernier, Geneva, Switzerland
Tel. +41 22 749 01 11
Fax +41 22 749 09 47
copyright@iso.org
www.iso.org

Contents

Page

Foreword	iv
Introduction	v
1 Scope	1
2 Symbols and units	1
2.1 General.....	1
2.2 Additional notations.....	2
3 General principles	3
3.1 Purpose.....	3
3.2 Description.....	3
3.3 Dimensional layout of hydraulic cylinder.....	3
3.4 Common calculation of maximum stress in the rod (for all mounting types) σ_{\max}	5
3.4.1 Deflexion curve.....	6
3.4.2 Bending moment.....	6
3.4.3 Maximum value of the bending moment.....	6
3.4.4 Maximum stress of the piston rod.....	7
3.4.5 Mounting types of the cylinder tube and piston rod.....	7
4 Case of pin-mounted hydraulic cylinders	8
4.1 Model of the hydraulic cylinder and unknown values.....	8
4.2 Linear system.....	9
4.3 Critical buckling load.....	9
4.4 Greatest allowable compressive load.....	10
5 Case of hydraulic cylinders fixed at the beginning of the cylinder tube and pin mounted at the end of the piston rod	10
5.1 Critical buckling load.....	10
5.2 Linear system.....	10
6 Case of hydraulic cylinders pin mounted at the beginning of the cylinder tube and fixed at the end of the piston rod	11
6.1 Critical buckling load.....	11
6.2 Linear system.....	11
7 Case of hydraulic cylinders fixed at both ends	12
7.1 Critical buckling load.....	12
7.2 Linear system.....	12
8 Case of hydraulic cylinders fixed at the beginning of the cylinder tube and free at the end of the piston rod	13
8.1 Critical buckling load.....	13
8.2 Linear system.....	14
9 Case of hydraulic cylinders fixed at both ends with free movement allowed at the end of the piston rod	15
9.1 Critical buckling load.....	15
9.2 Linear system.....	15
Annex A (informative) Example of numerical results	17
Bibliography	19

Foreword

ISO (the International Organization for Standardization) is a worldwide federation of national standards bodies (ISO member bodies). The work of preparing International Standards is normally carried out through ISO technical committees. Each member body interested in a subject for which a technical committee has been established has the right to be represented on that committee. International organizations, governmental and non-governmental, in liaison with ISO, also take part in the work. ISO collaborates closely with the International Electrotechnical Commission (IEC) on all matters of electrotechnical standardization.

The procedures used to develop this document and those intended for its further maintenance are described in the ISO/IEC Directives, Part 1. In particular the different approval criteria needed for the different types of ISO documents should be noted. This document was drafted in accordance with the editorial rules of the ISO/IEC Directives, Part 2 (see www.iso.org/directives).

Attention is drawn to the possibility that some of the elements of this document may be the subject of patent rights. ISO shall not be held responsible for identifying any or all such patent rights. Details of any patent rights identified during the development of the document will be in the Introduction and/or on the ISO list of patent declarations received (see www.iso.org/patents).

Any trade name used in this document is information given for the convenience of users and does not constitute an endorsement.

For an explanation on the meaning of ISO specific terms and expressions related to conformity assessment, as well as information about ISO's adherence to the WTO principles in the Technical Barriers to Trade (TBT) see the following URL: [Foreword - Supplementary information](#)

The committee responsible for this document is ISO/TC 131, *Fluid power systems*, Subcommittee SC 3, *Cylinders*.

This second edition cancels and replaces the withdrawn first edition (ISO/TS 13725:2001), which has been technically revised.

Introduction

Historically, cylinder manufacturers in the fluid power industry have experienced very few rod buckling failures, most likely due to the use of adequately conservative design factors employed during cylinder design and to the recommendation of factors of safety to the users. Many countries and some large companies have developed their own methods for evaluating buckling load.

The method presented in this Technical Specification has been developed to comply with the requirements formulated by ISO/TC 131.

iTeh STANDARD PREVIEW
(standards.iteh.ai)
Full standard:
<https://standards.iteh.ai/catalog/standards/sist/9bc3f28f-2546-4d67-acda-1824f5c0a5c0/iso-ts-13725-2016>

iTeh STANDARD PREVIEW
(standards.iteh.ai)

Full standard:
<https://standards.iteh.ai/catalog/standards/sist/9bc3f28f-2546-4d67-acda-1824f5c0a5c0/iso-ts-13725-2016>

Hydraulic fluid power — Method for evaluating the buckling load of a hydraulic cylinder

1 Scope

This Technical Specification specifies a method for the evaluation of the buckling load which

- takes into account a geometric model of the hydraulic cylinder, meaning it does not treat the hydraulic cylinder as an equivalent column,
- can be used for all types of cylinder mounting and rod end connection specified in [Table 2](#),
- includes a factor of safety, k , to be set by the person performing the calculations and reported with the results of the calculations,
- takes into account possible off-axis loading,
- takes into account the weight of the hydraulic cylinder, meaning it does not neglect all transverse loads applied on the hydraulic cylinder,
- can be implemented as a simple computer program, and
- considers the cylinder fully extended.

The method specified is based on the elastic buckling theory and applies to single and double acting cylinders that conform to ISO 6020 (all parts), ISO 6022 and ISO 10762. If necessary, finite element analyses can be used to verify as well as to determine the buckling load.

The method is not developed for thin-walled cylinders, double-rods or plunger cylinders.

The method is not developed for internal (rod) buckling.

The friction of spherical bearings is not taken into account.

NOTE This method is based mainly on original work by Fred Hoblit.^[2] This method has been established in reference to the standard NF PA/T3.6.37.^[1]

2 Symbols and units

2.1 General

The symbols and units used in this Technical Specification are given in [Table 1](#). See [Figures 1](#) and [2](#) for labels of dimensions and other characteristics.

Table 1 — Symbols and units

Symbol	Meaning	Unit
C	Stiffness of a possible transverse support at the free end of the piston rod	N/mm
D_{1e}	Outside diameter of the cylinder tube	mm
D_{1i}	Inside diameter of the cylinder tube	mm
D_2	Outside diameter of the piston rod	mm
e_a, e_d	Distance where the loading of an eccentrically loaded column is equivalent to a concentric axial force F and end moment $M = F [x] e$	mm
E_1	Modulus of elasticity of cylinder tube material	N/mm ²

Table 1 (continued)

Symbol	Meaning	Unit
E_2	Modulus of elasticity of piston rod material	N/mm ²
F	Maximum allowable compressive axial load; modified by the factor of safety, (see k below), it creates in the piston rod a maximum stress equal to the yield stress of the piston rod material	N
$F_{critical}$	Euler buckling load of the cylinder	N
I_1	Moment of inertia of the cylinder tube	mm ⁴
I_2	Moment of inertia of the piston rod	mm ⁴
k	Factor of safety [see Clause 1, c]	—
L_1	Cylinder tube length (in accordance with Figure 1)	mm
L_2	Piston rod length (in accordance with Figure 1)	mm
L_3	Length of the portion of rod situated inside the cylinder tube, i.e. the distance between the centre points of the piston and the piston rod bearing (in accordance with Figure 1) with the rod fully extended	mm
L_p	Length of the piston	mm
M_a	Fixed-end moment at the beginning of the cylinder tube of a fixed hydraulic cylinder	N·mm
M_{bc}	Moment at the junction of cylinder tube and piston rod	N·mm
M_d	Fixed-end moment at the end of the piston rod of a fixed hydraulic cylinder	N·mm
M_{max}	Maximum moment in the piston rod	N·mm
R_a	Reaction at the beginning of the cylinder tube	N
R_d	Reaction at the end of the piston rod	N
R_{bc}	Reaction between cylinder tube and piston rod	N
X	Distance from the end of a beam	mm
Y	Deflection of a slender beam at distance x	mm
G	Gravitational acceleration	mm/s ²
Δ	Elongation of the possible transverse support at the free end of the piston rod	mm
θ	Angle (crookedness) between the deflection curve of the cylinder tube and the deflection curve of the piston rod (see Figure 2)	rad
ρ_1	Mass per unit volume of cylinder tube material	kg/mm ³
ρ_2	Mass per unit volume of piston rod material	kg/mm ³
σ	Stress	N/mm ²
σ_e	Yield point of a material	N/mm ²
σ_{max}	Maximum compressive stress	N/mm ²
φ_a	Angle of the deflection curve at the beginning of the cylinder tube	rad
φ_b	Angle of the deflection curve at the end of the cylinder tube	rad
φ_c	Angle of the deflection curve at the beginning of the piston rod	rad
φ_d	Angle of the deflection curve at the end of the piston rod	rad
ψ_a	Angle at the beginning of the cylinder tube (see Figure 2)	rad
ψ_d	Angle at the end of the piston rod (see Figure 2)	rad

2.2 Additional notations

The following additional notations are also used in this Technical Specification:

$$s_1 = \sin (q_1 L_1) \tag{1}$$

$$c_1 = \cos (q_1 L_1) \tag{2}$$

$$s_2 = \sin (q_2 L_2) \quad (3)$$

$$c_2 = \cos (q_2 L_2) \quad (4)$$

$$q_1 = \sqrt{\frac{k \times F}{E_1 \times I_1}} \quad (5)$$

$$q_2 = \sqrt{\frac{k \times F}{E_2 \times I_2}} \quad (6)$$

NOTE The origin of these notations (used for calculation) comes from the original work of Hoblit (see Reference 2).

3 General principles

3.1 Purpose

The cylinder is a system consisting of three parts (Figure 2). Two parts, the cylinder tube and the rod outside of the tube, are considered as columns. This system is subject to compressive forces (F , $-F$). The third part is the connection between these two parts in the form of the small piece of the rod inside the tube and is modelled as a rotational spring. The purpose of this Technical Specification is to determine the maximum allowable force, F_{\max} , that avoids reaching yield stress of the rod material, σ_e , as well as buckling.

3.2 Description

The cylinder is in static equilibrium. The cylinder is subjected to a deformation due to the compression forces (F , $-F$). This deformation is identified for each of the three parts of the cylinder by geometric unknowns (angles) and static unknowns (forces, moments) and a specific relation (Hoblit model) due to the rotational spring joining the cylinder tube and the rod.

Based on considerations of equilibrium and kinematics, a set of equations is formulated. The type of fixations (e.g. pin-mounted or fixed at the two ends) defines the number of unknown values (from 9 to 13). There are as many equations as unknown values. Six types of fixation are treated (Table 2).

The system of equations can be solved for an F value previously set. However, it is important to establish a particular value of F , noted $F_{critical}$. $F_{critical}$ cancels the determinant of the system of equations. This value should not be reached because it leads to an infinite value of the maximum stress of the rod (σ_{\max}).

It is therefore necessary to find the value of F (F_{\max}) between the zero value (in fact $\varepsilon \cdot F_{critical}$) and $F_{critical}$ (in fact $[1 - \varepsilon] \cdot F_{critical}$) that leads the stress in the rod to reach the yield stress of the rod material (when $\sigma_{\max} = \sigma_e$).

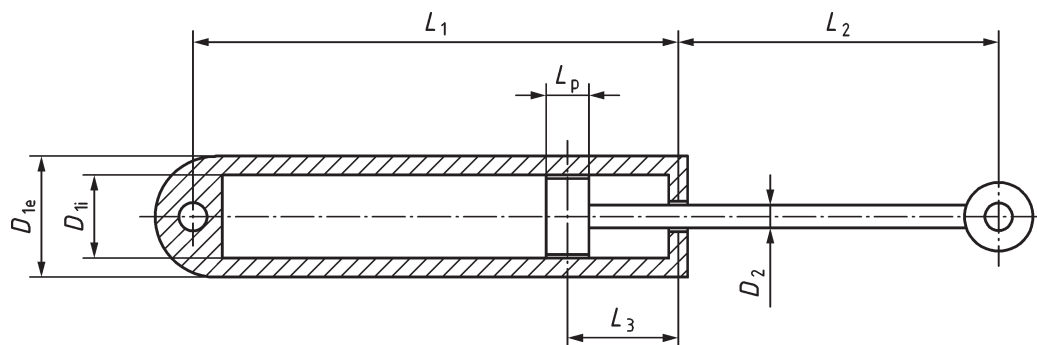
NOTE ε is a seed value used in the method of proportional parts to solve the set of equations.

3.3 Dimensional layout of hydraulic cylinder

Figures 1 and 2 depict the variables and principles used within this Technical Specification.

In the event that the external load F on the cylinder is at its maximum with the rod fully extended, the worst case occurs when the cylinder is in the horizontal position. In this case, the maximum allowable compressive load is at its lowest and creates the maximum stress in the piston rod. For this reason, and also considering the way of calculation where L_3 is insignificant compared with L_1 and L_2 , L_3 is the shortest distance between the two centre points of the piston and the bearing.

When an almost retracted cylinder is loaded with a pushing force, there might be a risk of internal buckling of the rod. Therefore, the rod is to be calculated separately if this is regarded as a risk.



NOTE $L_3 = \frac{(L_p + \frac{(D_{1e} - D_{1i})}{2})}{2}$ is a possible minimum value of L_3 .

Figure 1 — Cylinder

ITEH STANDARD PREVIEW
 (standards.iteh.ai)
 Full standard:
<https://standards.iteh.ai/catalog/standards/sist/9bc3f28f-2546-4d67-acda-1824f5c0a5c0/iso-ts-13725-2016>