

**SLOVENSKI STANDARD**  
**SIST EN 50636-2-107:2015/A1:2018**  
**01-marec-2018**

---

**Varnost gospodinjskih in podobnih električnih aparatov - 2-107. del: Posebne zahteve za baterijske robotsko vodene električne vrtno kosilnice - Dopnilo A1**

Safety of household and similar appliances - Part 2-107: Particular requirements for robotic battery powered electrical lawnmowers

Sicherheit elektrischer Geräte für den Hausgebrauch und ähnliche Zwecke - Teil 2-107: Besondere Anforderungen für batteriebetriebene Roboter-Rasenmäher

Appareils électrodomestiques et analogues - Partie 2-107: Exigences particulières relatives aux tondeuses à gazon électriques robotisées alimentées par batteries

[https://standards.iteh.ai/catalog/standards/sist/a0c68cdf-1dd0-4d91-9e3d-](https://standards.iteh.ai/catalog/standards/sist/a0c68cdf-1dd0-4d91-9e3d-bdf0430540b1/sist-en-50636-2-107-2015-a1-2018)

**Ta slovenski standard je istoveten z: EN 50636-2-107:2015/A1:2018**

---

**ICS:**

13.120	Varnost na domu	Domestic safety
65.060.70	Vrtnarska oprema	Horticultural equipment

**SIST EN 50636-2-107:2015/A1:2018**      **en**

**iTeh STANDARD PREVIEW**  
**(standards.iteh.ai)**

SIST EN 50636-2-107:2015/A1:2018

<https://standards.iteh.ai/catalog/standards/sist/a0c68cdf-1dd0-4d91-9e3d-bdf0430540b1/sist-en-50636-2-107-2015-a1-2018>

EUROPEAN STANDARD

**EN 50636-2-107:2015/A1**

NORME EUROPÉENNE

EUROPÄISCHE NORM

January 2018

ICS 65.060.70

English Version

## Safety of household and similar appliances - Part 2-107: Particular requirements for robotic battery powered electrical lawnmowers

Appareils électrodomestiques et analogues - Partie 2-107:  
Exigences particulières relatives aux tondeuses à gazon  
électriques robotisées alimentées par batteries

Sicherheit elektrischer Geräte für den Hausgebrauch und  
ähnliche Zwecke - Teil 2-107: Besondere Anforderungen für  
batteriebetriebene Roboter-Rasenmäher

This amendment A1 modifies the European Standard EN 50636-2-107:2015; it was approved by CENELEC on 2017-08-09. CENELEC members are bound to comply with the CEN/CENELEC Internal Regulations which stipulate the conditions for giving this amendment the status of a national standard without any alteration.

Up-to-date lists and bibliographical references concerning such national standards may be obtained on application to the CEN-CENELEC Management Centre or to any CENELEC member.

This amendment exists in three official versions (English, French, German). A version in any other language made by translation under the responsibility of a CENELEC member into its own language and notified to the CEN-CENELEC Management Centre has the same status as the official versions.

[SIST EN 50636-2-107:2015/A1:2018](#)

CENELEC members are the national electrotechnical committees of Austria, Belgium, Bulgaria, Croatia, Cyprus, the Czech Republic, Denmark, Estonia, Finland, Former Yugoslav Republic of Macedonia, France, Germany, Greece, Hungary, Iceland, Ireland, Italy, Latvia, Lithuania, Luxembourg, Malta, the Netherlands, Norway, Poland, Portugal, Romania, Serbia, Slovakia, Slovenia, Spain, Sweden, Switzerland, Turkey and the United Kingdom.



European Committee for Electrotechnical Standardization  
Comité Européen de Normalisation Electrotechnique  
Europäisches Komitee für Elektrotechnische Normung

**CEN-CENELEC Management Centre: Rue de la Science 23, B-1040 Brussels**

<b>Contents</b>	<b>Page</b>
European foreword.....	3
1 Modification to 7.12.....	4
2 Modification to 20.102.4.1.....	4
3 Addition of Figure 107 .....	4

**iTeh STANDARD PREVIEW**  
**(standards.iteh.ai)**

[SIST EN 50636-2-107:2015/A1:2018](https://standards.iteh.ai/catalog/standards/sist/a0c68cdf-1dd0-4d91-9e3d-bdf0430540b1/sist-en-50636-2-107-2015-a1-2018)  
<https://standards.iteh.ai/catalog/standards/sist/a0c68cdf-1dd0-4d91-9e3d-bdf0430540b1/sist-en-50636-2-107-2015-a1-2018>

## European foreword

This document (EN 50636-2-107:2015/A1:2018) has been prepared by CLC/TC 116 “Safety of motor-operated electric tools”.

The following dates are fixed:

- latest date by which this document has to be implemented at national level by publication of an identical national standard or by endorsement (dop) 2018-10-12
- latest date by which the national standards conflicting with this document have to be withdrawn (dow) 2020-01-12

This amendment was developed to implement an extra foot probe test for children.

Attention is drawn to the possibility that some of the elements of this document may be the subject of patent rights. CENELEC shall not be held responsible for identifying any or all such patent rights.

This document has been prepared under a mandate given to CENELEC by the European Commission and the European Free Trade Association, and supports essential requirements of EU Directive(s).

For the relationship with EU Directive(s) see informative Annex ZZ, which is an integral part of EN 50636-2-107:2015.

[SIST EN 50636-2-107:2015/A1:2018  
https://standards.iteh.ai/catalog/standards/sist/a0c68cdf-1dd0-4d91-9e3d-bdf0430540b1/sist-en-50636-2-107-2015-a1-2018](https://standards.iteh.ai/catalog/standards/sist/a0c68cdf-1dd0-4d91-9e3d-bdf0430540b1/sist-en-50636-2-107-2015-a1-2018)

## EN 50636-2-107:2015/A1:2018

**1 Modification to 7.12**

Add the following new item at the end of the list:

"gg) Information for machines used in public areas, that warning signs shall be placed around the working area of the machine. They shall show the substance of the following text:

Warning!

Automatic lawnmower! Keep away from the machine! Supervise children!"

**2 Modification to 20.102.4.1**

Replace the third paragraph with the following:

"The test is made with the **cutting means** in the most unfavourable **cutting position**. If the **cutting means** path height is different at different **cutting means** speeds, the test is conducted so as to include the extremes of **cutting means** height."

Replace the fifth paragraph with the following:

**"20.102.4.1.1 Adult foot probe test**

The foot probe of Figure 102 shall be inserted towards the **cutting means** around the machine's external enclosure. The base of the probe is held horizontally at any height and then inclined up to 15° forward or backward from the horizontal (see Figure 102). The probe is applied around the entire machine as described in Figure 102 until a horizontal force of 20 N maximum is reached, or until the machine's enclosure lifts or moves from the original position, or until contact is made with the **cutting means** path, whichever occurs first.

The test probe shall not enter the path of the **cutting means** assembly."

**20.102.4.1.2 Foot probe test for standing child**

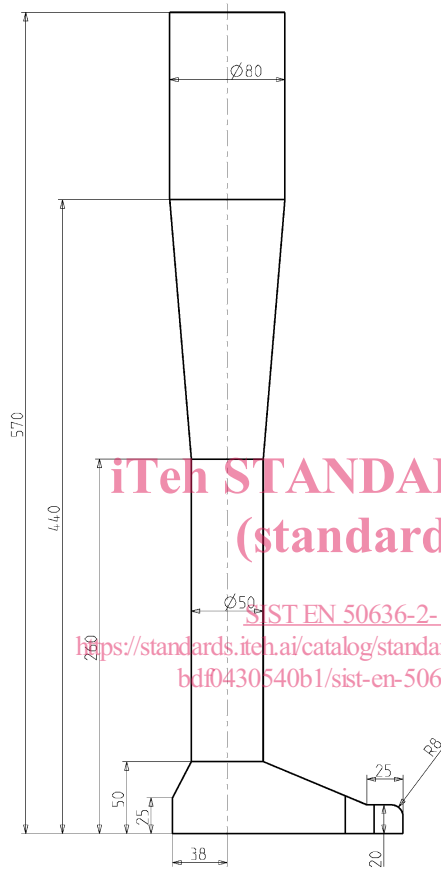
The foot probe of Figure 107 shall be inserted towards the **cutting means** around the machine's external enclosure. The base of the probe is held horizontally at any height and then inclined up to 15° forward or backward from the horizontal (see Figure 102). The probe is applied around the entire machine as described in Figure 102 until a horizontal force of 20 N maximum is reached, or until the machine's enclosure lifts or moves from the original position, or until contact is made with the **cutting means** path, whichever occurs first.

The test probe shall not enter the path of the **cutting means** assembly."

**3 Addition of Figure 107**

Add the following figure:

Dimensions in millimetres



iTeh STANDARD PREVIEW  
(standards.iteh.ai)

SIST EN 50636-2-107:2015/A1:2018  
<https://standards.iteh.ai/catalog/standards/sist/a0c68cdf-1dd0-4d91-9e3d-bdf0430540b1/sist-en-50636-2-107-2015-a1-2018>

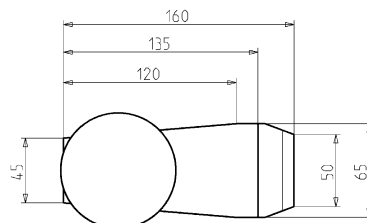


Figure 107 — Foot probe for standing child