
**Fire safety engineering — Selection
of design fire scenarios and design
fires —**

**Part 2:
Design fires**

*Ingénierie de la sécurité incendie — Sélection de scénarios d'incendie
et de feux de dimensionnement —*

Partie 2: Feu de dimensionnement

Document Preview

[ISO/TS 16733-2:2021](https://standards.iteh.ai/catalog/standards/iso/632bb933-083a-41e3-877e-4e7897753339/iso-ts-16733-2-2021)

<https://standards.iteh.ai/catalog/standards/iso/632bb933-083a-41e3-877e-4e7897753339/iso-ts-16733-2-2021>



iTeh Standards
(<https://standards.iteh.ai>)
Document Preview

[ISO/TS 16733-2:2021](https://standards.iteh.ai/catalog/standards/iso/632bb933-083a-41e3-877e-4e7897753339/iso-ts-16733-2-2021)

<https://standards.iteh.ai/catalog/standards/iso/632bb933-083a-41e3-877e-4e7897753339/iso-ts-16733-2-2021>



COPYRIGHT PROTECTED DOCUMENT

© ISO 2021

All rights reserved. Unless otherwise specified, or required in the context of its implementation, no part of this publication may be reproduced or utilized otherwise in any form or by any means, electronic or mechanical, including photocopying, or posting on the internet or an intranet, without prior written permission. Permission can be requested from either ISO at the address below or ISO's member body in the country of the requester.

ISO copyright office
CP 401 • Ch. de Blandonnet 8
CH-1214 Vernier, Geneva
Phone: +41 22 749 01 11
Email: copyright@iso.org
Website: www.iso.org

Published in Switzerland

Contents

	Page
Foreword	v
Introduction	vi
1 Scope	1
2 Normative references	1
3 Terms and definitions	1
4 Symbols	3
5 The role of design fires in fire safety design	6
6 Considerations based on methods of analysis	10
7 Elements of a design fire	10
7.1 General	10
7.2 Incipient stage	12
7.3 Growth stage	12
7.4 Flashover	13
7.5 Fully developed stage	13
7.6 Events that change a design fire	14
7.6.1 General	14
7.6.2 Suppression systems	14
7.6.3 Intervention by fire services	14
7.6.4 Changes in ventilation	15
7.6.5 Enclosure effects	15
7.6.6 Combustible construction materials	15
7.7 Extinction and decay stage	15
8 Constructing a design fire curve	16
8.1 Procedure	16
8.2 Step 1 — Parameters provided by the design fire scenario	17
8.3 Step 2 — Fires involving single or multiple fuels	18
8.3.1 General	18
8.3.2 Develop the design fire curve for first item	19
8.3.3 Ignition of other items	19
8.3.4 Power law design fire curves	20
8.3.5 Wall and ceiling linings	21
8.3.6 Smouldering fires	21
8.4 Step 3 — Flashover	22
8.4.1 General	22
8.4.2 Empirical correlations for critical heat release rate for onset of flashover	22
8.5 Step 4 — Maximum heat release rate	23
8.5.1 General	23
8.5.2 Fuel-controlled fires	23
8.5.3 Ventilation-controlled fires	24
8.5.4 Mechanical ventilation	25
8.6 Step 5 — Modifying the design fire curve	25
8.6.1 Suppression systems	25
8.6.2 Fire service intervention	26
8.6.3 Changes in ventilation	26
8.6.4 Enclosure effects on mass loss rate of fuel	26
8.7 Step 6 — Fire duration	27
8.7.1 Duration of the fire growth stage	27
8.7.2 Duration of the steady burning stage	27
8.8 Step 7 — Decay	28
9 Species production	28
9.1 Species yields	28

10	Design fires for structural fire engineering	28
10.1	General.....	28
10.2	Localized fires.....	29
10.2.1	Flames not impinging the ceiling.....	29
10.2.2	Flames impinging the ceiling.....	30
10.3	Parametric fires.....	31
10.3.1	Heating phase.....	32
10.3.2	Heating duration and maximum temperature.....	33
10.3.3	Cooling phase.....	34
10.4	Fires in large compartments (travelling fires).....	34
11	External design fires	37
12	Fire tests	38
13	Probabilistic aspects of design fires	38
13.1	General.....	38
13.2	Inclusion of statistical representativeness/distribution characteristics.....	39
13.3	Simulations using distributed input and sampling techniques.....	39
13.4	Stochastic models.....	40
13.5	Results of probabilistic analysis and their evaluation.....	41
14	Documentation	42
Annex A (informative) Data for development of design fires		43
Bibliography		49

iTeh Standards
(<https://standards.itih.ai>)
Document Preview

[ISO/TS 16733-2:2021](https://standards.itih.ai/catalog/standards/iso/632bb933-083a-41e3-877e-4e7897753339/iso-ts-16733-2-2021)

<https://standards.itih.ai/catalog/standards/iso/632bb933-083a-41e3-877e-4e7897753339/iso-ts-16733-2-2021>

Foreword

ISO (the International Organization for Standardization) is a worldwide federation of national standards bodies (ISO member bodies). The work of preparing International Standards is normally carried out through ISO technical committees. Each member body interested in a subject for which a technical committee has been established has the right to be represented on that committee. International organizations, governmental and non-governmental, in liaison with ISO, also take part in the work. ISO collaborates closely with the International Electrotechnical Commission (IEC) on all matters of electrotechnical standardization.

The procedures used to develop this document and those intended for its further maintenance are described in the ISO/IEC Directives, Part 1. In particular, the different approval criteria needed for the different types of ISO documents should be noted. This document was drafted in accordance with the editorial rules of the ISO/IEC Directives, Part 2 (see www.iso.org/directives).

Attention is drawn to the possibility that some of the elements of this document may be the subject of patent rights. ISO shall not be held responsible for identifying any or all such patent rights. Details of any patent rights identified during the development of the document will be in the Introduction and/or on the ISO list of patent declarations received (see www.iso.org/patents).

Any trade name used in this document is information given for the convenience of users and does not constitute an endorsement.

For an explanation of the voluntary nature of standards, the meaning of ISO specific terms and expressions related to conformity assessment, as well as information about ISO's adherence to the World Trade Organization (WTO) principles in the Technical Barriers to Trade (TBT), see www.iso.org/iso/foreword.html.

This document was prepared by Technical Committee ISO/TC 92, *Fire safety*, Subcommittee SC 4, *Fire safety engineering*.

A list of all parts in the ISO 16733 series can be found on the ISO website.

Any feedback or questions on this document should be directed to the user's national standards body. A complete listing of these bodies can be found at www.iso.org/members.html.

Introduction

This document provides guidance for the specification of design fires for use in fire safety engineering analysis. A design fire is linked to a specific scenario that is tailored to the fire-safety design objective. There can be several fire safety objectives being addressed, including safety of life (for occupants and rescue personnel), conservation of property, protection of the environment and preservation of heritage. A different set of design fire scenarios and design fires can be required to assess the adequacy of a proposed design for each objective.

The procedure for the selection of the design fire scenarios is described in ISO 16733-1. The design fire can be thought of as an engineering representation of a fire or a “load” that is used to determine the consequences of a given fire scenario. The set of assumed fire characteristics are referred to as “the design fire”. In this document, various formulae are presented to calculate different phenomena. Formulae other than those presented here can also be applicable for a given application.

It is important that the design fire be appropriate to the objectives of the fire-safety engineering analysis. It should challenge the fire safety systems in a specific built environment and result in a final design solution that satisfies performance criteria associated with all the relevant design objectives.

Users of this document should be appropriately qualified and competent in the field of fire safety engineering. It is important that users understand the parameters within which specific methodologies may be used.

ISO 23932-1 provides a performance-based methodology for engineers to assess the level of fire safety for new or existing built environments. Fire safety is evaluated through an engineered approach based on the quantification of the behaviour of fire and based on knowledge of the consequences of such behaviour on life safety, property, heritage and the environment. ISO 23932-1 provides the process (necessary steps) and essential elements for designing a robust, performance-based fire safety programme.

ISO 23932-1 is supported by a set of ISO fire safety engineering standards available on the methods and data needed for the steps in a fire safety engineering design summarized in ISO 23932-1:2018, Clause 4 and shown in [Figure 1](#). This system of standards provides an awareness of the interrelationships between fire evaluations when using the set of ISO fire safety engineering standards.

Each document includes language in the introductory material of the document to tie it to the steps in the fire safety engineering design process outlined in ISO 23932-1. Selection of design fire scenarios and design fires form part of conformance with ISO 23932-1, and all the requirements of ISO 23932-1 apply to any application of this document.

This document provides a more comprehensive treatment of the content of ISO 16733-1:2015, Annex C.

Fire safety engineering — Selection of design fire scenarios and design fires —

Part 2: Design fires

1 Scope

This document provides guidance for the specification of design fires for use in fire safety engineering analysis of building and structures in the built environment. The design fire is intended to be used in an engineering analysis to determine consequences in fire safety engineering (FSE) analyses.

2 Normative references

The following documents, in whole or in part, are normatively referenced in this document. For dated references, only the edition cited applies. For undated references, the latest edition of the referenced document (including any amendments) applies.

ISO 13943, *Fire safety — Vocabulary*

3 Terms and definitions

For the purposes of this document, the terms and definitions given in ISO 13943 and the following apply.

ISO and IEC maintain terminological databases for use in standardization at the following addresses:

— ISO Online browsing platform: available at <https://www.iso.org/obp>

— IEC Electropedia: available at <http://www.electropedia.org/>

3.1

combustion efficiency

ratio of the amount of heat release in incomplete combustion to the theoretical heat of complete combustion

Note 1 to entry: Combustion efficiency can be calculated only for cases where complete combustion can be defined.

Note 2 to entry: Combustion efficiency is dimensionless and is usually expressed as a percentage.

3.2

design fire

quantitative description of assumed fire characteristics within a *design fire scenario* (3.3)

Note 1 to entry: Typically, an idealized description of the variation with time of important fire variables, such as heat release rate and toxic species yields, along with other important input data for modelling such as the fire load density.

3.3
design fire scenario

specific *fire scenario* (3.9) on which a deterministic fire safety engineering analysis is conducted

Note 1 to entry: As the number of possible fire scenarios can be very large, it is necessary to select the most important scenarios (the design fire scenarios) for analysis. The selection of design fire scenarios is tailored to the fire-safety design objectives, and accounts for the likelihood and consequences of potential scenarios.

3.4
effective heat of combustion

heat released from a burning test specimen in a given time interval divided by the mass lost from the test specimen in the same time period

Note 1 to entry: This is the same as the net heat of combustion if all the test specimen is converted to volatile combustion products and if all the combustion products are fully oxidized.

Note 2 to entry: The typical units are kilojoules per gram ($\text{kJ}\cdot\text{g}^{-1}$).

3.5
extinction coefficient

natural logarithm of the ratio of incident light intensity to transmitted light intensity, per unit light path length

Note 1 to entry: Typical units are reciprocal metres (m^{-1}).

3.6
fire growth

stage of fire development during which the *heat release rate* (3.15) and the temperature of the fire are increasing

3.7
fire load

quantity of heat which can be released by the complete combustion of all the combustible materials in a volume, including the facings of all bounding surfaces

Note 1 to entry: Fire load may be based on *effective heat of combustion* (3.4), *gross heat of combustion* (3.14), or net heat of combustion as required by the specifier.

Note 2 to entry: The word “load” can be used to denote force or power or energy. In this context, it is being used to denote energy.

Note 3 to entry: The typical units are kilojoules (kJ) or megajoules (MJ).

3.8
fire load density

fire load (3.7) per unit area

Note 1 to entry: The typical units are kilojoules per square metre ($\text{kJ}\cdot\text{m}^{-2}$).

3.9
fire scenario

qualitative description of the course of a fire with time, identifying key events that characterize the fire and differentiate it from other possible fires

Note 1 to entry: The fire scenario description typically includes the ignition and fire growth processes, the *fully developed fire* (3.13) stage, the fire decay stage, and the environment and systems that will impact on the course of the fire. Unlike deterministic fire analysis, where fire scenarios are individually selected and used as *design fire scenarios* (3.3), in fire risk assessment, fire scenarios are used as *representative fire scenarios* (3.10) within *fire scenario clusters*.

[SOURCE: ISO 13943:2008, 4.129, modified]

3.10**representative fire scenario**

specific *fire scenario* (3.9) selected from a *fire scenario cluster* (3.11) such that the consequence of the representative fire scenario can be used as a reasonable estimate of the average consequence of scenarios in the fire scenario cluster

3.11**fire scenario cluster**

subset of *fire scenarios* (3.9), usually defined as part of a complete partitioning of the universe of possible fire scenarios

Note 1 to entry: The subset is usually defined so that the calculation of fire risk as the sum over all fire scenario clusters of fire scenario cluster frequency multiplied by *representative fire scenario* (3.10) consequence does not impose an undue calculation burden.

3.12**flashover**

transition to a state of total surface involvement in a fire of combustible materials within an enclosure

3.13**fully developed fire**

state of total involvement of combustible materials in a fire

3.14**heat of combustion**

thermal energy produced by combustion of unit mass of a given substance

Note 1 to entry: The typical units are kilojoules per gram ($\text{kJ}\cdot\text{g}^{-1}$).

3.15**heat release rate**

rate of thermal energy production generated by combustion

Note 1 to entry: The typical units are watts (W).

3.16**target**

a person, object or environment intended to be protected from the effects of fire and its effluents (smoke, corrosive gas, etc.) and/or fire suppression effluents

4 Symbols

A_t	total area of enclosure (walls, ceiling and floor, including openings), m^2
A_T	total area of enclosure (walls, ceiling and floor, excluding openings), m^2
A_f	horizontal burning area of the fuel, m^2
A_{fl}	floor area, m^2
A_o	area of opening, m^2
b	thermal inertia of linings, $\text{J}/(\text{m}^2\text{s}^{1/2}\text{K})$
c	distance of target from the centre of the flame, m
c_p	specific heat, $\text{J}/(\text{kg K})$
D	fire diameter, m

e	represents the mathematical constant - Euler's number
f	flapping length
f_a	flapping angle
$f_s(s)$	probability distribution for RSET
$f_s(x)$	probability distribution for ASET
$q_{f,d}$	fire load energy density, MJ/m ²
F_s	non-dimensionless form of fire
h_g	heat of gasification of the fuel, kJ/kg
h_T	average effective heat transfer coefficient, kW/(m ² K)
h'	heat flux, W/m ²
h'_{net}	net heat flux, W/m ²
H	vertical distance between the fire source and the ceiling, m
H_o	height of an opening, m
L	length of the compartment, m
L_d	length of the design area involved in fire, m
L_f	vertical flame height, m
L_H	horizontal flame length, m
\dot{m}_f	rate of mass loss of fuel, kg/s
$\dot{m}_{F,u}$	mass loss rate of fuel under well ventilated free burn conditions, kg/s
m_g	mass of fuel burned during the growth phase, kg
\dot{m}_{out}	rate of entry of air outflow from the enclosure, kg/s
\dot{m}_p	mass flow of gases entrained into the fire plume, kg/s
\dot{m}_s	mass loss rate for smouldering combustion, g/min
m_{tot}	total mass of fuel burned, kg
\dot{m}''	mass loss rate per unit area, kg/(s m ²)
O	opening factor, m ^{1/2}
\dot{q}_{ext}	total external heat flux from the smoke and heated enclosure boundary surfaces, kW
$q_{f,d}$	fire load density per unit floor area, MJ/m ²
\dot{q}''	heat flux, kW/m ²
\dot{Q}	heat release rate, kW
\dot{Q}_c	convective part of the heat release rate, W/m ²

\dot{Q}_{fo}	minimum heat release rate to cause flashover, kW
\dot{Q}_H	non-dimensional heat release rate
\dot{Q}_{max}	maximum heat release rate, kW
\dot{Q}_v	ventilation-controlled heat release rate, kW
\dot{Q}''	heat release rate per unit area, kW/m ²
r	stoichiometric air requirement for complete combustion of fuel, expressed as the mass ratio of air to fuel
r_d	horizontal distance between the vertical axis of the fire and the point along the ceiling where the thermal flux is calculated, m
r_x	radial distance away from the fire, m
s	fire spread rate, m/s
t	time, s
t_b	burning time, s
t_g	time required to reach the reference heat release rate \dot{Q}_o , s
t_{gw}	time at which the heat release rate reaches a maximum value, s
t_{lim}	limiting time, h
t_{tot}	total burning time, s
T_a	room temperature, °C
T_f	reduced near-field temperature due to flapping, °C
T_{nf}	near-field temperature, °C
W	width of the compartment, m
\mathcal{S}_r	radiative fraction of the total energy
y	dimensionless constant
Y_{O_2}	mass fraction of oxygen in the plume flow, kg/kg
$Y_{o,l}$	mass fraction of oxygen in the gases feeding the flame, kg/kg
$Y_{o,\infty}$	mass fraction of oxygen under ambient free-burning conditions, kg/kg
z	height along the flame axis, m
z_o	virtual origin of the axis, m
z'	vertical position of the virtual heat source, m
α	fire growth coefficient, kW/s ²
α_c	convective heat transfer coefficient
Γ	dimensionless ventilation parameter

ΔH_c	chemical heat of combustion, kJ/kg
ΔH_{eff}	effective heat of combustion, kJ/kg
ΔH_{O_2}	heat of combustion based on oxygen consumption, MJ/kg (~13,1 for hydrocarbons)
ε_f	emissivity of the fire
ε_m	surface emissivity of the member
θ_m	surface temperature of the member, °C [see Formula (21)]
θ_g	parametric fire gas temperature, °C
ρ_b	density of boundary, kg/m ³
σ	Stefan Boltzmann constant
λ	thermal conductivity, W/(m K)
τ_d	duration of the decay burning stage, s
τ_{gw}	duration of the growing fire stage, s
τ_s	duration of the steady burning stage, s
Φ	configuration factor
χ	combustion efficiency

5 The role of design fires in fire safety design

Design fire specifications play a critical role in fire safety engineering. It is important that the procedures described in ISO 23932-1 be followed. This means that the fire safety objectives and performance criteria are stated and the relevant design scenarios are identified using ISO 16733-1 for fire scenarios and ISO/TS 29761 for behavioural scenarios.

[Figure 1](#), taken from ISO 23932-1, illustrates the fire safety design process. The specification of design fires follows the scenario selection step and provides input data for the selected engineering methods. Following identification of the design fire scenarios in accordance with ISO 16733-1, the assumed characteristics of the fire on which the scenario quantification will be based shall be described. The assumed fire characteristics and the associated fire development over time are generally referred to as the “design fire”.

This document is applicable to design fires that are quantifiable in engineering terms and therefore intended to form part of a deterministic or combined deterministic/probabilistic analysis. A deterministic approach calculating the consequence of individual fire scenarios may also form part of an overriding probabilistic analysis. For example, Monte Carlo simulation can be used to quantify uncertainty using statistical techniques in both inputs and outputs.

This document is also intended to accommodate a range of different analysis methods, including use of computational fluid dynamics models (CFD), zone models, or simple hand calculations. Each approach can require the use of different parts of this document. Some calculations may be handled within the analysis model, such as determining the ventilation limit or determining effect of suppression systems, while simpler analysis methods can require these elements to be estimated separately. Where computer models are used for the analysis, it is important for the engineer to understand the model limitations and which fire or other phenomena are included and not included. The model or tool selected for use should be appropriate for the overall analysis as described in ISO 23932-1:2018 Clause 11.

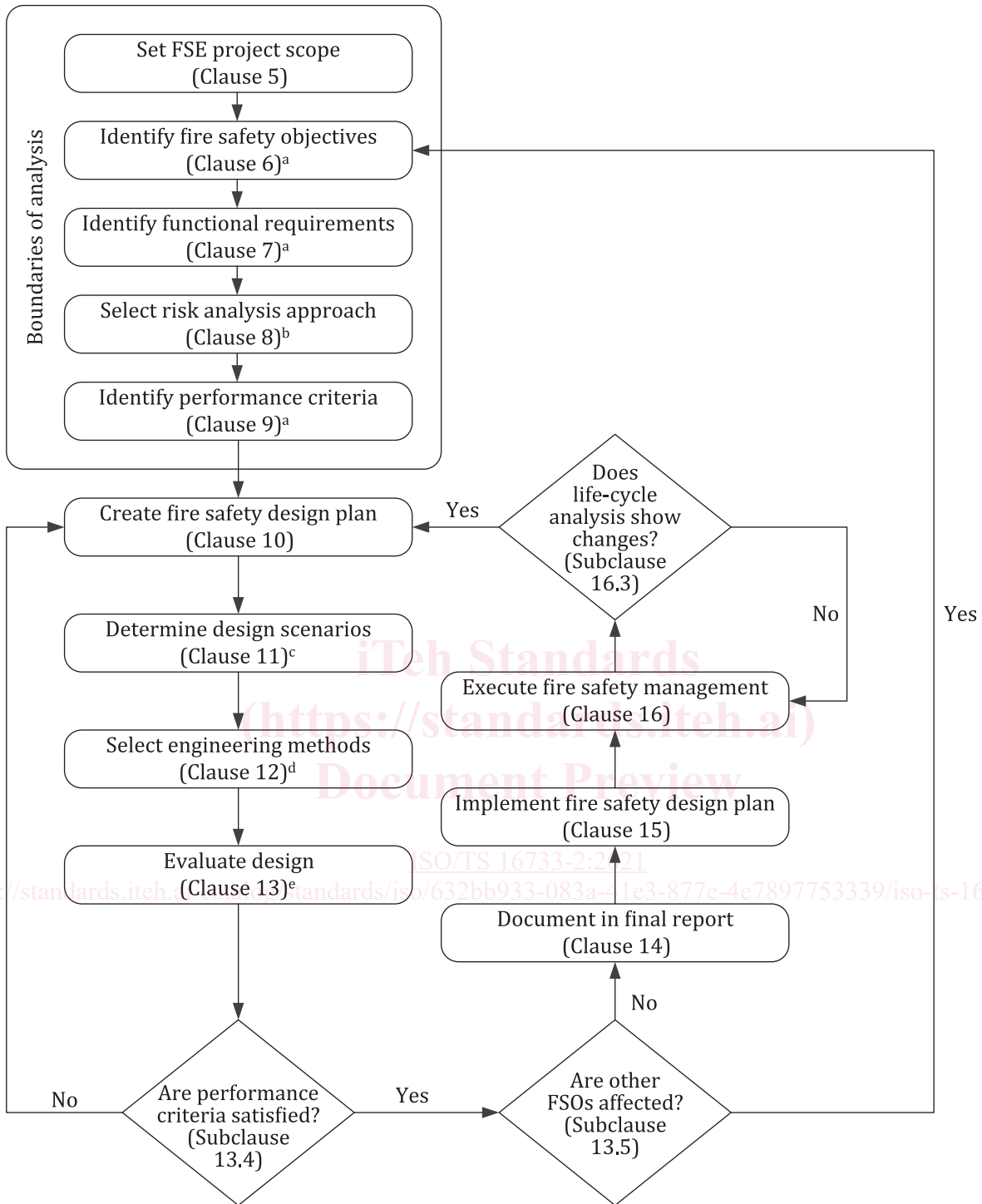
The nature of the fire scenario can require the application of selected clauses of this document rather than all parts. For example, where the fire scenario predominantly concerns:

- a growing or developing fire, refer to [Clause 8](#).
- a smouldering fire, refer to [Clause 9](#).
- a fully developed fire affecting structure, refer to [Clause 10](#).

iTeh Standards
(<https://standards.iteh.ai>)
Document Preview

[ISO/TS 16733-2:2021](#)

<https://standards.iteh.ai/catalog/standards/iso/632bb933-083a-41e3-877e-4e7897753339/iso-ts-16733-2-2021>



Key

- ^a See also ISO/TR 16576 (Examples).
- ^b See also ISO 16732-1, ISO 16733-1, ISO/TS 29761.
- ^c See also ISO 16732-1, ISO 16733-1, ISO/TS 29761.
- ^d See also ISO/TS 13447, ISO 16730-1, ISO/TR 16730-2, ISO/TR 16730-3, ISO/TR 16730-4, ISO/TR 16730-5 (Examples), ISO 16734, ISO 16735, ISO 16736, ISO 16737, ISO/TR 16738, ISO 24678-6.
- ^e See also ISO/TR 16738, ISO 16733-1.

Figure 1 — Flow chart illustrating the fire safety design process and selection of design fire scenarios (Source: ISO 23932-1)