



# SLOVENSKI STANDARD

## oSIST prEN ISO 11608-2:2020

01-april-2020

---

### Peresa za injiciranje za uporabo v medicini - Zahteve in preskusne metode - 2. del: Igle (ISO/DIS 11608-2:2020)

Needle-based injection systems for medical use - Requirements and test methods - Part 2: Needles (ISO/DIS 11608-2:2020)

Kanülenbasierte Injektionssysteme zur medizinischen Verwendung - Anforderungen und Prüfverfahren - Teil 2: Kanülen (ISO/DIS 11608-2:2020)

Systèmes d'injection à aiguille pour usage médical - Exigences et méthodes d'essai - Partie 2: Aiguilles à deux extrémités (ISO/DIS 11608-2:2020)

<https://standards.iteh.ai/catalog/standards/sist/327f4379-c23d-4af5-a384-87cc7d636e64/osist-pr-en-iso-11608-2-2020>

Ta slovenski standard je istoveten z: **prEN ISO 11608-2**

---

#### ICS:

11.040.25	Injekcijske brizge, igle in katetri	Syringes, needles and catheters
-----------	-------------------------------------	---------------------------------

**oSIST prEN ISO 11608-2:2020**

**en**

**iTeh STANDARD PREVIEW**  
**(standards.iteh.ai)**

[oSIST prEN ISO 11608-2:2020](https://standards.iteh.ai/catalog/standards/sist/327f4379-c23d-4af5-a384-87cc7d636a64/osist-pren-iso-11608-2-2020)

<https://standards.iteh.ai/catalog/standards/sist/327f4379-c23d-4af5-a384-87cc7d636a64/osist-pren-iso-11608-2-2020>

# DRAFT INTERNATIONAL STANDARD

## ISO/DIS 11608-2

ISO/TC 84

Secretariat: DS

Voting begins on:  
2020-02-18Voting terminates on:  
2020-05-12

---

---

## Needle-based injection systems for medical use — Requirements and test methods —

### Part 2: Double-ended needles

ICS: 11.040.25

## iTeh STANDARD PREVIEW (standards.iteh.ai)

[oSIST prEN ISO 11608-2:2020](https://standards.iteh.ai/catalog/standards/sist/327f4379-c23d-4af5-a384-87cc7d636a64/osist-pren-iso-11608-2-2020)<https://standards.iteh.ai/catalog/standards/sist/327f4379-c23d-4af5-a384-87cc7d636a64/osist-pren-iso-11608-2-2020>

THIS DOCUMENT IS A DRAFT CIRCULATED FOR COMMENT AND APPROVAL. IT IS THEREFORE SUBJECT TO CHANGE AND MAY NOT BE REFERRED TO AS AN INTERNATIONAL STANDARD UNTIL PUBLISHED AS SUCH.

IN ADDITION TO THEIR EVALUATION AS BEING ACCEPTABLE FOR INDUSTRIAL, TECHNOLOGICAL, COMMERCIAL AND USER PURPOSES, DRAFT INTERNATIONAL STANDARDS MAY ON OCCASION HAVE TO BE CONSIDERED IN THE LIGHT OF THEIR POTENTIAL TO BECOME STANDARDS TO WHICH REFERENCE MAY BE MADE IN NATIONAL REGULATIONS.

RECIPIENTS OF THIS DRAFT ARE INVITED TO SUBMIT, WITH THEIR COMMENTS, NOTIFICATION OF ANY RELEVANT PATENT RIGHTS OF WHICH THEY ARE AWARE AND TO PROVIDE SUPPORTING DOCUMENTATION.

This document is circulated as received from the committee secretariat.

**ISO/CEN PARALLEL PROCESSING**



Reference number  
ISO/DIS 11608-2:2020(E)

© ISO 2020

## iTeh STANDARD PREVIEW (standards.iteh.ai)

[oSIST prEN ISO 11608-2:2020](https://standards.iteh.ai/catalog/standards/sist/327f4379-c23d-4af5-a384-87cc7d636a64/osist-pren-iso-11608-2-2020)

<https://standards.iteh.ai/catalog/standards/sist/327f4379-c23d-4af5-a384-87cc7d636a64/osist-pren-iso-11608-2-2020>



### **COPYRIGHT PROTECTED DOCUMENT**

© ISO 2020

All rights reserved. Unless otherwise specified, or required in the context of its implementation, no part of this publication may be reproduced or utilized otherwise in any form or by any means, electronic or mechanical, including photocopying, or posting on the internet or an intranet, without prior written permission. Permission can be requested from either ISO at the address below or ISO's member body in the country of the requester.

ISO copyright office  
CP 401 • Ch. de Blandonnet 8  
CH-1214 Vernier, Geneva  
Phone: +41 22 749 01 11  
Fax: +41 22 749 09 47  
Email: [copyright@iso.org](mailto:copyright@iso.org)  
Website: [www.iso.org](http://www.iso.org)

Published in Switzerland

# Contents

	Page
<b>Foreword</b> .....	<b>v</b>
<b>Introduction</b> .....	<b>vi</b>
<b>1 Scope</b> .....	<b>1</b>
<b>2 Normative references</b> .....	<b>1</b>
<b>3 Terms and definitions</b> .....	<b>1</b>
<b>4 Requirements</b> .....	<b>3</b>
4.1 Needle component requirements.....	3
4.1.1 General.....	3
4.1.2 Materials.....	3
4.1.3 Tubing characteristics.....	3
4.1.4 Dimensions for needle assembly.....	3
4.1.5 Positioning of needle bevel inside the cartridge.....	4
4.1.6 Needle points.....	4
4.1.7 Freedom from defects.....	5
4.1.8 Lubrication.....	5
4.1.9 Cleanliness.....	5
4.1.10 Limits for acidity or alkalinity.....	5
4.1.11 Limits for extractable metals.....	5
4.1.12 Patency of lumen.....	5
4.2 Pen needle requirements.....	6
4.2.1 General.....	6
4.2.2 Bond between hub and needle tube.....	6
4.2.3 Dislocation of measuring point at patient end.....	6
4.2.4 Ease of assembly.....	6
4.2.5 Sterility.....	6
4.2.6 Flow rate through the needle.....	7
4.3 Functional compatibility with needle-based injection systems.....	7
4.3.1 General.....	7
4.3.2 Needle hub assembly force.....	8
4.3.3 Dose delivery.....	8
4.3.4 Needle removal force.....	8
4.3.5 Leakage.....	8
<b>5 Sampling</b> .....	<b>8</b>
<b>6 Pre-conditioning of needles</b> .....	<b>12</b>
6.1 Pre-conditioning in a dry-heat, cold storage and damp heat atmosphere.....	12
6.2 Pre-conditioning in a cyclical atmosphere.....	12
<b>7 Standard atmosphere and apparatus for test</b> .....	<b>12</b>
7.1 General.....	12
7.2 Standard test atmosphere.....	12
7.3 Test gauge.....	12
<b>8 Test Methods</b> .....	<b>13</b>
8.1 Determination of dislocation of measuring point at patient end.....	13
8.2 Bond between hub and needle tube.....	13
8.3 Ease of assembly.....	13
<b>9 Functional compatibility between needles and injector systems</b> .....	<b>14</b>
9.1 Principle.....	14
9.2 Apparatus and equipment.....	14
9.3 Sample quantity requirements.....	14
9.4 Test procedures.....	14
9.4.1 Procedure for testing the needle hub assembly force.....	14
9.4.2 Procedure for testing the dose accuracy.....	15

**ISO/DIS 11608-2:2020(E)**

9.4.3	Procedure for testing delivery of doses .....	15
9.4.4	Procedure for testing needle hub torque removal.....	15
9.4.5	Procedure for testing leakage.....	15
<b>10</b>	<b>Packaging</b> .....	<b>15</b>
<b>11</b>	<b>Information supplied by the manufacturer</b> .....	<b>16</b>
11.1	General.....	16
11.2	Marking.....	16
11.2.1	General.....	16
11.2.2	Marking on the unit packaging.....	17
11.2.3	Marking on the user packaging.....	17
11.3	Instructions for use.....	18
<b>Annex A</b>	<b>(normative) Determination of flow rate through needle</b> .....	<b>19</b>
<b>Annex B</b>	<b>(informative) Needle bonding strength test method</b> .....	<b>21</b>
<b>Annex C</b>	<b>(normative) Method for preparation of extracts</b> .....	<b>22</b>
<b>Bibliography</b>	.....	<b>23</b>

## iTeh STANDARD PREVIEW (standards.iteh.ai)

[oSIST prEN ISO 11608-2:2020](https://standards.iteh.ai/catalog/standards/sist/327f4379-c23d-4af5-a384-87cc7d636a64/osist-pren-iso-11608-2-2020)

<https://standards.iteh.ai/catalog/standards/sist/327f4379-c23d-4af5-a384-87cc7d636a64/osist-pren-iso-11608-2-2020>

## Foreword

ISO (the International Organization for Standardization) is a worldwide federation of national standards bodies (ISO member bodies). The work of preparing International Standards is normally carried out through ISO technical committees. Each member body interested in a subject for which a technical committee has been established has the right to be represented on that committee. International organizations, governmental and non-governmental, in liaison with ISO, also take part in the work. ISO collaborates closely with the International Electrotechnical Commission (IEC) on all matters of electrotechnical standardization.

The procedures used to develop this document and those intended for its further maintenance are described in the ISO/IEC Directives, Part 1. In particular the different approval criteria needed for the different types of ISO documents should be noted. This document was drafted in accordance with the editorial rules of the ISO/IEC Directives, Part 2 (see [www.iso.org/directives](http://www.iso.org/directives)).

Attention is drawn to the possibility that some of the elements of this document may be the subject of patent rights. ISO shall not be held responsible for identifying any or all such patent rights. Details of any patent rights identified during the development of the document will be in the Introduction and/or on the ISO list of patent declarations received (see [www.iso.org/patents](http://www.iso.org/patents)).

Any trade name used in this document is information given for the convenience of users and does not constitute an endorsement.

For an explanation of the meaning of ISO specific terms and expressions related to conformity assessment, as well as information about ISO's adherence to the World Trade Organization (WTO) principles in the Technical Barriers to Trade (TBT) see the following URL: [www.iso.org/iso/foreword.html](http://www.iso.org/iso/foreword.html).

The committee responsible for this document is ISO/TC 84 *Devices for administration of medicinal products and catheters*.

This third edition ~~replaces the second edition (ISO 11608-2:2012), which has been technically revised.~~

Information about the revision history of the ISO 11608 series can be found in ISO 11608-1:20##.

A list of all parts in the ISO 11608 series can be found on the ISO website.

Any feedback or questions on this document should be directed to the user's national standards body. A complete listing of these bodies can be found at [www.iso.org/members.html](http://www.iso.org/members.html).

## ISO/DIS 11608-2:2020(E)

### Introduction

This document covers sterile double-ended needles intended for single use in conjunction with needle-based injection systems (e.g. pen injectors). These needles are often referred to as pen needles.

The devices described in this document are designed to be used with the devices described in ISO 11608-1 and ISO 11608-3. ISO 11608-1 is the umbrella document. All other parts, including this document, are used in conjunction with ISO 11608-1.

The first edition of this document introduced the concept of interchangeability and the labelling designations “Type A” (i.e. interchangeable) and “non-Type A” for needles and container closure systems. Since its promulgation, experience has shown that the complexity of these systems makes it very difficult to ensure functional compatibility as defined in the different parts of this International Standard, particularly when products are made by different manufacturers and the design is not verified as a system. Based on this experience, it is believed that the Type A designation does not represent adequate guidance to the user in making decisions on the compatibility of needles and container closures with specific needle-based injection systems (NIS). As such, the labelling designation “Type A” has been removed.

The second edition of this document addressed functional compatibility of the system through testing in accordance with [Clause 11](#). Flow rate was introduced as a new parameter. The sampling plans for inspection selected for this document and outlined in 11608-1 are intended to verify the design, at a high confidence level. The sampling plan does not replace the more general manufacturing quality systems, including lot release, which appear in standards on quality systems, e.g. ISO 9001 or ISO 13485.

This document does not specify requirements or test methods for freedom from biological hazards because no international agreement on the methodology and the pass/fail criteria has been reached. Guidance on biological tests relevant to double-ended needles is given in ISO 10993-1, and it is suggested that manufacturers take this guidance into account when evaluating products. Such evaluation should include the effects of the sterilization process. However, national regulations might exist in some countries, which might take precedence over the guidance in ISO 10993-1.

In some countries, national regulations exist, and their requirements might supersede or complement this document.

Guidance on transition periods for implementing the requirements of this document is given in ISO/TR 19244.

Needle-based injection systems for medical use — Requirements and test methods — Part 2: Double-ended needles



# Needle-based injection systems for medical use — Requirements and test methods —

## Part 2: Double-ended needles

### 1 Scope

This document specifies requirements, test methods and compatibility requirements for single-use, double-ended, sterile needles used with needle-based injection systems (NISs) that fulfil the specifications of ISO 11608-1.

NOTE Needles provided by the manufacturer integrated into the fluid path or container are covered in ISO 11608-3, and hypodermic needles provided separately are covered in ISO 7864.

This document is not applicable to:

- needles for dental use;
- pre-filled syringe needles;
- needles intended for different routes of administration (e.g. intravenous, intrathecal, intraocular).

### 2 Normative references

oSIST prEN ISO 11608-2:2020  
<https://standards.iteh.ai/catalog/standards/sist/3274379-c23d-4af5-a384-87e0f53a46/cispr-11608-2-2020>

The following documents are referred to in the text in such a way that some or all of their content constitutes requirements of this document. For dated references, only the edition cited applies. For undated references, the latest edition of the referenced document (including any amendments) applies.

ISO 9626:2016, *Stainless steel needle tubing for the manufacture of medical devices — Requirements and test methods*

ISO 11608-1,<sup>1)</sup> *Needle-based injection systems for medical use — Requirements and test methods — Part 1: Needle-based injection systems*

ISO 11608-3, *Needle-based injection systems for medical use — Requirements and test methods — Part 3: NIS containers and fluid paths*

ISO 13926-2, *Pen systems — Part 2: Plunger stoppers for pen-injectors for medical use*

### 3 Terms and definitions

For the purposes of this document, the terms and definitions given in ISO 11608-1 and the following apply.

ISO and IEC maintain terminological databases for use in standardization at the following addresses:

- IEC Electropedia: available at <http://www.electropedia.org/>
- ISO Online browsing platform: available at <http://www.iso.org/obp>

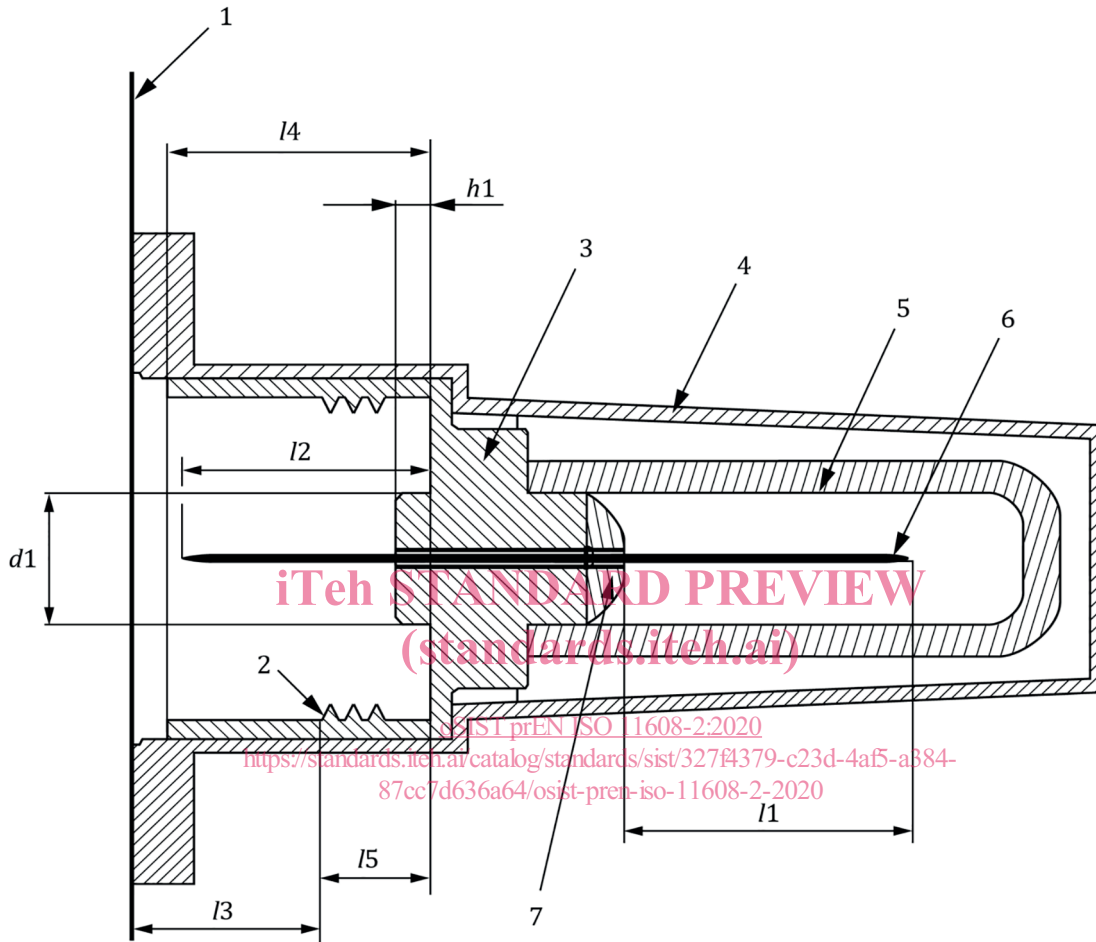
1) To be published (revises ISO 11608-1:2012). Stage at time of publication: ISO/DIS 11608-1:2020.

ISO/DIS 11608-2:2020(E)

3.1 pen needle

single-use, double-ended, sterile needles with attachment system specific for needle-based injection systems (NISs)

Note 1 to entry: See [Figure 1](#).



Key

- |                                       |   |
|---------------------------------------|---|
| 1 seal ( <a href="#">3.2</a> )        | l1 patient-end needle length  |
| 2 means of needle assembly attachment | l2 cartridge-end needle length  |
| 3 needle hub                          | l3 distance from the surface of the seal ( <a href="#">3.2</a> ) to the underside of the thread |
| 4 needle container                    | l4 depth of the needle hub  |
| 5 needle shield (if included)         | l5 distance from the underside of the thread to the surface of the hub base                     |
| 6 needle tube                         | h1 needle hub union length  |
| 7 jointing medium (if used)           | d1 diameter of needle hub union   |

Figure 1 — Example presentation of pen needle assembly

3.2 seal

removable barrier which is intended to maintain the sterility of the needle inside the needle container

### 3.3

#### unit packaging

needle container, together with the *seal* (3.2) forming the packaging of the device, that maintains the sterility of the needle

### 3.4

#### user packaging

what is provided to the user with one or a collection of devices, in their *unit packaging* (3.3), of the same item and from the same manufacturing batch

## 4 Requirements

### 4.1 Needle component requirements

#### 4.1.1 General

These requirements relate to the needle component included in the pen needle device.

#### 4.1.2 Materials

The needle shall be made of tubing materials specified in ISO 9626:2016, Clause 4.

#### 4.1.3 Tubing characteristics

The tubing characteristics used in needles shall meet the requirements of ISO 9626. If the size of tubing is not covered in ISO 9626, the requirements for stiffness and breakage shall be adapted to corresponding requirements for the defined sizes.

#### 4.1.4 Dimensions for needle assembly

The dimensions of the needle assembly attachment part shall be such that the needle fits and functions with NISs that meet the requirements specified in ISO 11608-1. Needles shall fit the test apparatus specified in 7.3. Dimensions shall be in accordance with [Table 1](#).

**Table 1 — Dimensional requirements of needle assembly**

Measurements	Dimensions mm
$l_1$	specified length $\pm 1,25$
$l_2$	5,7 to 7,0
$l_3$	<6,0
$l_4$	<7,5
$l_5$	<3,7
$h_1$	0 to 1,0
$d_1$	0 to 3,0

Needle manufacturers shall consider the risk of not delivering to the target tissue when setting the specifications per [Table 1](#), e.g. for needles of less than 6 mm in length.

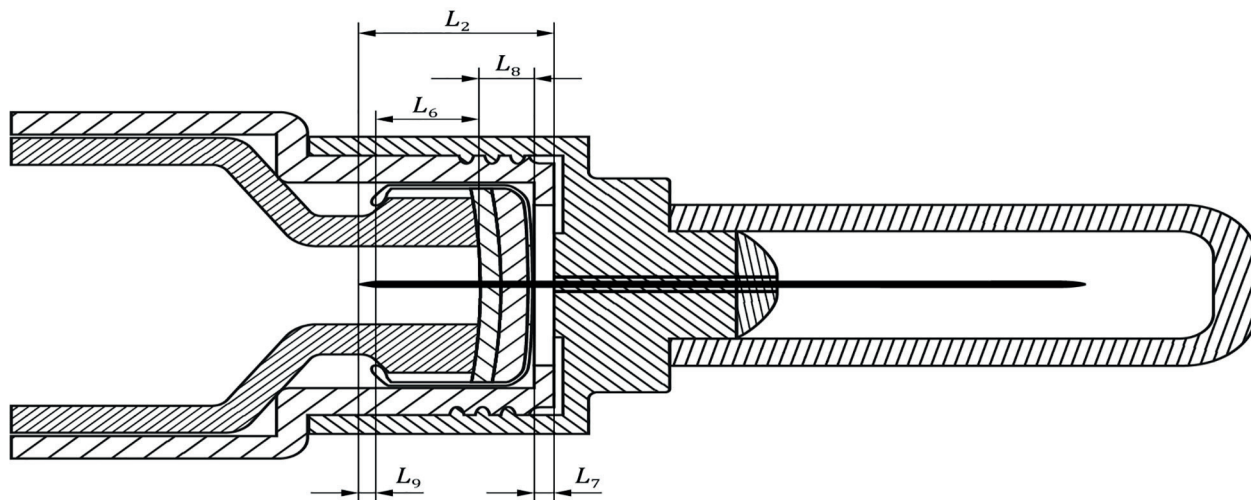
Needles may be deliberately designed not to fit the test gauge described in 7.3 and not to meet the dimensional requirements given in Table 1. In such cases, a dedicated test gauge for the specific design shall be created in order to perform the test in 4.8. In addition, the remaining requirements, other than those in 4.2.2, shall apply. In cases where the dimensional requirements of 4.2.2 are not met, the needle labelling shall list the NIS(s) and accessories for which it has been designed and tested.

ISO/DIS 11608-2:2020(E)

4.1.5 Positioning of needle bevel inside the cartridge

When the needle is applied to the NIS with a torque of  $(0,08 \pm 0,02)$  Nm the needle bevel shall be placed behind the septum ( $L_6 > 0$  mm).

NOTE Verification of this requirement can be based on calculations of worst case (e.g. taking into account impact by tolerance, impact by deformation of the septum due to friction between needle and septum).



Key

$L_2$  cartridge-end needle length

$L_6$  gap between bevel and septum

$L_7$  bottom thickness of cartridge holder

$L_8$  thickness of septum (According to ISO 13926-2)

$L_9$  length of bevel cut

iTeh STANDARD PREVIEW  
(standards.iteh.ai)

oSIST prEN ISO 11608-2:2020  
<https://standards.iteh.ai/catalog/standards/sist/327f4379-c23d-4af5-a384-87cc7d636a64/osist-pren-iso-11608-2-2020>

NOTE  $L_{6,min} = L_{2,min} - (L_{9,max} + L_{8,max} + L_{7,max})$

Figure 2 — Positioning of needle bevel inside the cartridge

4.1.6 Needle points

When visually examined by normal or corrected to normal vision under magnification of  $\times 2,5$  and illuminance of  $215 \pm 20$  lx at a reading distance of between 30 cm and 70 cm needle points shall appear sharp and free from feather edges, burrs and hooks.

NOTE The resolution of the human eye is approximately  $5\mu\text{m}$ . Based on this, burrs of around  $0,05$  mm can be detected.

$$U = \frac{1}{\alpha_{1,min}} = 0,82 \frac{D}{\lambda}$$

where

$U$  is resolution;

$\alpha_{1,min}$  is angular distance;

$D$  is circular opening of the pupil, where the light is deflected;

$\lambda$  is average wavelength of the visual light.