
INTERNATIONAL STANDARD



1756

INTERNATIONAL ORGANIZATION FOR STANDARDIZATION - МЕЖДУНАРОДНАЯ ОРГАНИЗАЦИЯ ПО СТАНДАРТИЗАЦИИ - ORGANISATION INTERNATIONALE DE NORMALISATION

Industrial trucks — Dimensions of stillages — Connection gauge

Chariots de manutention — Dimensions des plates-formes — Gabarit de raccordement

First edition — 1975-06-15

iteh STANDARD PREVIEW
(standards.iteh.ai)

[ISO 1756:1975](https://standards.iteh.ai/catalog/standards/sist/66089add-13a6-46c8-8cf2-e13b72bed9c9/iso-1756-1975)

<https://standards.iteh.ai/catalog/standards/sist/66089add-13a6-46c8-8cf2-e13b72bed9c9/iso-1756-1975>

FOREWORD

ISO (the International Organization for Standardization) is a worldwide federation of national standards institutes (ISO Member Bodies). The work of developing International Standards is carried out through ISO Technical Committees. Every Member Body interested in a subject for which a Technical Committee has been set up has the right to be represented on that Committee. International organizations, governmental and non-governmental, in liaison with ISO, also take part in the work.

Draft International Standards adopted by the Technical Committees are circulated to the Member Bodies for approval before their acceptance as International Standards by the ISO Council.

Prior to 1972, the results of the work of the Technical Committees were published as ISO Recommendations; these documents are now in the process of being transformed into International Standards. As part of this process, Technical Committee ISO/TC 110 has reviewed ISO Recommendation R 1756 and found it technically suitable for transformation. International Standard ISO 1756 therefore replaces ISO Recommendation R 1756-1970 to which it is technically identical.

ISO Recommendation R 1756 was approved by the Member Bodies of the following countries :

Australia	Greece	Spain
Austria	India	Sweden
Belgium	Ireland	Switzerland
Chile	Israel	Thailand
Czechoslovakia	Japan	Turkey
Egypt, Arab Rep. of	New Zealand	United Kingdom
France	Peru	
Germany	South Africa, Rep. of	

The Member Body of the following country expressed disapproval of the Recommendation on technical grounds :

U.S.A.

The Member Body of the following country disapproved the transformation of ISO/R 1756 into an International Standard :

Germany

Industrial trucks – Dimensions of stillages – Connection gauge

iTeh STANDARD PREVIEW
(standards.iteh.ai)

1 SCOPE AND FIELD OF APPLICATION

2.1 Free height A_1

This International Standard specifies the dimensions of the connection gauge of stillages in direct contact with the maximum height A of the truck intended to handle the hand-operated elevating trucks.

NOTE – The dimensional specifications of the industrial trucks designed for handling the stillages are given in ISO 938, *Hand-operated stillage trucks – Principal dimensions*.

Dimensions in millimetres

A max. (ISO 938)	160	180	230	280
A_1	$170 + \begin{smallmatrix} 5 \\ 0 \end{smallmatrix}$	$190 + \begin{smallmatrix} 5 \\ 0 \end{smallmatrix}$	$242 + \begin{smallmatrix} 5 \\ 0 \end{smallmatrix}$	$295 + \begin{smallmatrix} 10 \\ 0 \end{smallmatrix}$

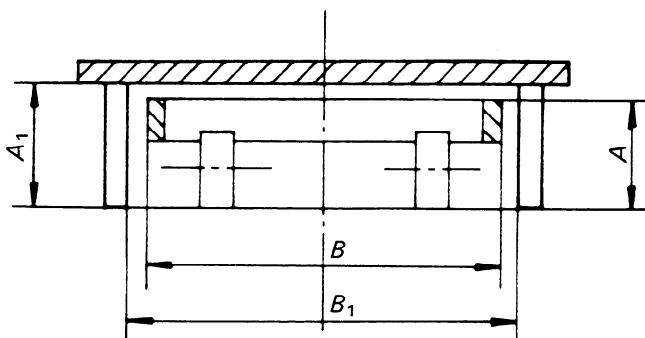
2 DIMENSIONS

2.2 Minimum free width B_1

The minimum free width B_1 , measured between the feet of the stillage, is related to the maximum width B of the elevating frame of the truck intended to handle the stillage.

Dimensions in millimetres

B max. (ISO 938)	470	560	620	700
B_1 min.	500	590	650	730



iTeh STANDARD PREVIEW
This page intentionally left blank
(standards.iteh.ai)

[ISO 1756:1975](#)

<https://standards.iteh.ai/catalog/standards/sist/66089add-13a6-46c8-8cf2-e13b72bed9c9/iso-1756-1975>