



# SLOVENSKI STANDARD

## SIST ETS 300 096:1997

01-maj-1997

---

**Digitalno omrežje z integriranimi storitvami (ISDN) - Dopolnilni storitvi: prikaz razpoznavnosti (identitete) priključka v zvezi (COLP) in omejitev razpoznavanja (identifikacije) priključka v zvezi (COLR) - Funkcijske zmožnosti in informacijski tokovi**

Integrated Services Digital Network (ISDN); Connected Line Identification Presentation (COLP) and Connected Line Identification Restriction (COLR) supplementary services; Functional capabilities and information flows

**iTeh STANDARD PREVIEW**  
**(standards.iteh.ai)**

[SIST ETS 300 096:1997](https://standards.iteh.ai/catalog/standards/sist/4f4a773d-fc0f-4236-b227-48748f933811/sist-ets-300-096-1997)

<https://standards.iteh.ai/catalog/standards/sist/4f4a773d-fc0f-4236-b227-48748f933811/sist-ets-300-096-1997>

**Ta slovenski standard je istoveten z: ETS 300 096 Edition 1**

---

**ICS:**

33.080	Digitalno omrežje z integriranimi storitvami (ISDN)	Integrated Services Digital Network (ISDN)
--------	---	--

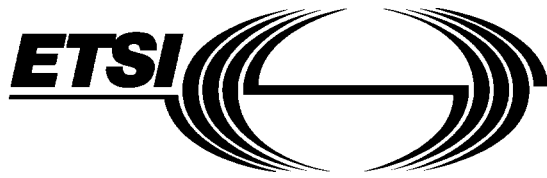
**SIST ETS 300 096:1997**

**en**

**iTeh STANDARD PREVIEW**  
**(standards.iteh.ai)**

[SIST ETS 300 096:1997](#)

<https://standards.iteh.ai/catalog/standards/sist/4f4a773d-fc0f-4236-b227-48748f933811/sist-ets-300-096-1997>



**E**UROPEAN  
**T**ELECOMMUNICATION  
**S**TANDARD

**ETS 300 096**

May 1992

Source: ETSI TC-SPS

Reference: T/S 22-05

ICS: 33.080

**Key words:** ISDN, supplementary service.

**Integrated Services Digital Network (ISDN);  
Connected Line Identification Presentation (COLP) and  
Connected Line Identification Restriction (COLR)  
supplementary services  
Functional capabilities and information flows**

**ETSI**

European Telecommunications Standards Institute

**ETSI Secretariat**

**Postal address:** F-06921 Sophia Antipolis CEDEX - FRANCE

**Office address:** 650 Route des Lucioles - Sophia Antipolis - Valbonne - FRANCE

**X.400:** c=fr, a=atlas, p=etsi, s=secretariat - **Internet:** secretariat@etsi.fr

Tel.: +33 92 94 42 00 - Fax: +33 93 65 47 16

**Copyright Notification:** No part may be reproduced except as authorized by written permission. The copyright and the foregoing restriction extend to reproduction in all media.

© European Telecommunications Standards Institute 1992. All rights reserved.

## iTeh STANDARD PREVIEW (standards.iteh.ai)

[SIST ETS 300 096:1997](https://standards.iteh.ai/catalog/standards/sist/4f4a773d-fc0f-4236-b227-48748f933811/sist-ets-300-096-1997)

<https://standards.iteh.ai/catalog/standards/sist/4f4a773d-fc0f-4236-b227-48748f933811/sist-ets-300-096-1997>

## Contents

Foreword.....	5
1 Scope .....	7
2 Normative references .....	7
3 Definitions.....	8
4 Symbols and abbreviations.....	9
5 Description .....	9
6 Derivation of a functional model .....	10
6.1 Functional model description .....	10
6.2 Description of the functional entities.....	10
6.3 Relationship with a basic service .....	10
7 Information flows.....	11
7.1 Information flow diagrams.....	11
7.2 Definition of individual information flows.....	11
7.2.1 Relationship ra .....	12
7.2.1.1 Contents of INFORM4 .....	12
7.2.2 Relationship rb.....	13
7.2.2.1 Contents of INFORM3 .....	13
7.2.3 Relationship rc .....	14
7.2.3.1 Contents of INFORM2 .....	14
7.2.4 Relationship rd .....	15
7.2.4.1 Contents of INFORM1 .....	15
8 SDL diagrams for functional entities.....	15
8.1 FE1.....	16
8.2 FE2.....	19
8.3 FE3.....	24
8.4 FE4.....	27
8.5 FE5.....	33
9 Functional entity actions (FEAs).....	37
9.1 FEAs of FE1 .....	37
9.2 FEAs of FE2.....	37
9.3 FEAs of FE3.....	37
9.4 FEAs of FE4.....	38
9.5 FEAs of FE5.....	38
10 Allocation of functional entities to physical locations.....	39
11 Interactions with other supplementary services .....	39
Annex A (informative): Terminal interchangeability between public and private ISDNs .....	40
History .....	41

Blank page

**iTeh STANDARD PREVIEW**  
**(standards.iteh.ai)**

[SIST ETS 300 096:1997](https://standards.iteh.ai/catalog/standards/sist/4f4a773d-fc0f-4236-b227-48748f933811/sist-ets-300-096-1997)

<https://standards.iteh.ai/catalog/standards/sist/4f4a773d-fc0f-4236-b227-48748f933811/sist-ets-300-096-1997>

## Foreword

This European Telecommunication Standard (ETS) has been produced by the Signalling Protocols and Switching (SPS) Technical Committee of the European Telecommunications Standards Institute (ETSI) and was adopted having passed through the ETSI standards approval procedure.

In accordance with CCITT Recommendation I.130 [1], the following three level structure is used to describe the supplementary telecommunications services as provided by European public telecommunications operators under the pan-European Integrated Services Digital Network (ISDN):

- Stage 1: is an overall service description, from the user's standpoint;
- Stage 2: identifies the functional capabilities and information flows needed to support the service described in stage 1; and,
- Stage 3: defines the signalling system protocols and switching functions needed to implement the service described in stage 1.

This ETS details the stage 2 aspects (functional capabilities and information flows) needed to support the Connected Line Identification Presentation (COLP) and Connected Line Identification Restriction (COLR) supplementary services. The stage one aspects are detailed in ETS 300 094 (1992) [COLP] and ETS 300 095 (1992) [COLR], respectively, and the stage three aspects in ETS 300 097 (1992) [COLP] and ETS 300 098 (1992) [COLR], respectively.

## iTeh STANDARD PREVIEW (standards.iteh.ai)

[SIST ETS 300 096:1997](https://standards.iteh.ai/catalog/standards/sist/4f4a773d-fc0f-4236-b227-48748f933811/sist-ets-300-096-1997)

<https://standards.iteh.ai/catalog/standards/sist/4f4a773d-fc0f-4236-b227-48748f933811/sist-ets-300-096-1997>

Blank page

**iTeh STANDARD PREVIEW**  
**(standards.iteh.ai)**

[SIST ETS 300 096:1997](https://standards.iteh.ai/catalog/standards/sist/4f4a773d-fc0f-4236-b227-48748f933811/sist-ets-300-096-1997)

<https://standards.iteh.ai/catalog/standards/sist/4f4a773d-fc0f-4236-b227-48748f933811/sist-ets-300-096-1997>



## 1 Scope

This standard defines the stage two of the pan-European Integrated Services Digital Network (ISDN) as provided by the European public telecommunications operators for the Connected Line Identification Presentation (COLP) and Connected Line Identification Restriction (COLR) supplementary services. Stage two identifies the functional capabilities and the information flows needed to support the service description. The stage two description also identifies user operations not directly associated with a call (see CCITT Recommendation I.130 [1]).

This standard is defined according to the methodology specified in CCITT Recommendation Q.65 [2].

This standard does not formally describe the relation between these supplementary service and the basic call but, where possible, this information is included for guidance.

In addition this standard does not specify the requirements where the service is provided to the user via a private ISDN. This standard does not specify the requirements for the allocation of defined functional entities within a private ISDN; it does however define which functional entities may be allocated to a private ISDN.

This standard does not specify the additional requirements where the service is provided to the user via a telecommunications network that is not an ISDN.

The COLP supplementary service provides the calling party with the possibility to receive identification of the connected party.

The COLR supplementary service enables the connected party to prevent presentation of its ISDN number to the calling party.

The COLP and COLR supplementary services are applicable to all telecommunication services.

This standard is applicable to the stage three standards for the ISDN COLP and COLR supplementary services. The term "stage three" is defined in CCITT Recommendation I.130 [1]. Where the text indicates the status of a requirement, i.e. as a strict command or prohibition, as authorisation leaving freedom, as a capability or possibility, this shall be reflected in the text of the relevant stage three standards.

Furthermore, conformance to this standard is met by conforming to the stage three standards with the field of application appropriate to the equipment being implemented. Therefore, no method of testing is provided for this standard.

## 2 Normative references

This standard incorporates by dated or undated reference, provisions from other publications. These normative references are cited at the appropriate places in the text and the publications are listed hereafter. For dated references, subsequent amendments to, or revisions of any of these publications apply to this ETS only when incorporated in it by amendment or revision. For undated references the latest edition of the publication referred to applies.

- [1] CCITT Recommendation I.130 (1988): "Method for the characterisation of telecommunication services supported by an ISDN and network capabilities of an ISDN".
- [2] CCITT Recommendation Q.65 (1988): "Stage 2 of the method for the characterisation of services supported by an ISDN".
- [3] ETS 300 094 (1992): "Integrated Services Digital Network (ISDN); Connected Line Identification Presentation (COLP) supplementary service; Service description".

- [4] ETS 300 095 (1992): "Integrated Services Digital Network (ISDN); Connected Line Identification Restriction (COLR) supplementary service; Service description".
- [5] CCITT Recommendation Q.71 (1988): "Basic call handling; Functional capabilities and information flows".
- [6] CCITT Recommendation I.112 (1988): "Vocabulary of terms for ISDNs".
- [7] CCITT Recommendation I.210 (1988): "Principles of telecommunication services supported by an ISDN and the means to describe them".
- [8] CCITT Recommendation E.164 (1988): "Numbering plan for the ISDN era".
- [9] CCITT Recommendation I.330 (1988): "ISDN numbering and addressing principles".
- [10] ETS 300 209: "Integrated Services Digital Network (ISDN); Freephone (FPH) supplementary service; Functional capabilities and information flows".
- [11] CCITT Recommendation Z.100 (1988): "Functional Specification Description Language (SDL)".
- [12] ETS 300 062 (1991): "Integrated Services Digital Network (ISDN); Direct Dialling In (DDI) supplementary service; Service description".
- [13] ETS 300 050 (1991): "Integrated Services Digital Network (ISDN); Multiple Subscriber Number (MSN) supplementary service; Service description".

### 3 Definitions

For the purposes of this standard, the following definitions apply:

**Connected line identity:** the address (the ISDN number, and if supplied the subaddress) of the connected line, and the screening indicator. If these are not available the reason is indicated, via the presentation indicator.

**Integrated Services Digital Network (ISDN):** see CCITT Recommendation I.112 [6], § 2.3 definition 308.

**International number:** an ISDN number structured as specified in § 3.2 (the paragraphs relating to international number) of CCITT Recommendation E.164 [8].

**ISDN number:** a number conforming to the numbering plan and structure specified in CCITT Recommendation E.164 [8].

**National number; National significant number:** an ISDN number structured as specified in § 3.2 (the paragraphs relating to national significant number) of CCITT Recommendation E.164 [8].

**Partial Number:** a part of an ISDN number which is significant for distinguishing between addressable entities beyond the network boundary. The partial number digits and the partial number length shall be governed by the requirements of the direct dialling in and multiple subscriber number supplementary services (see ETS 300 062 [12] and ETS 300 050 [13]).

**Presentation Indicator (PI):** the PI Presentation Indicator provides instructions on whether or not the provided connected line identity is allowed to be presented or not, or indicates that the number is not available.

**Screening Indicator (SI):** the SI provides information on the source and the quality of the provided information.

**Service; telecommunications service:** see CCITT Recommendation I.112 [6], § 2.2 definition 201.

**Subaddress:** see CCITT Recommendation I.330 [9], § 5.4.

**Subscriber number:** an ISDN number structured as specified in § 3.2 (the paragraphs relating to subscriber number) of CCITT Recommendation E.164 [8].

**Supplementary service:** see CCITT Recommendation I.210 [7], § 2.4.

## 4 Symbols and abbreviations

CC	Call Control
CCA	Call Control Agent
COLP	Connected Line Identification Presentation
COLR	Connected Line Identification Restriction
FEA	Functional Entity Action
INT TR	International Transit Exchange
ISDN	Integrated Services Digital Network
LE	Local Exchange
PI	Presentation Indicator
PTNX	Private Telecommunications Network Exchange
SDL	Specification and Description Language
SI	Screening Indicator
TE	Terminal Equipment

## 5 Description

The relationship between the COLP and the COLR supplementary services is described in ETS 300 094 [3], subclause 6.3.3 and ETS 300 095 [4], subclause 6.1.

The provisions for overriding the COLR supplementary service are described in ETS 300 094 [3], subclause 8.5.4 and ETS 300 095 [4], Clause 5 and subclause 6.2.3.

## 6 Derivation of a functional model

### 6.1 Functional model description

The model for the COLP and COLR supplementary services is shown in figure 1.

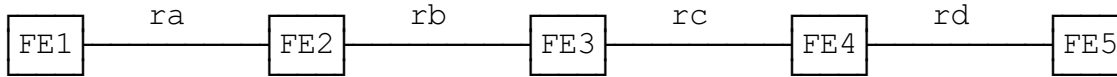


Figure 1: Functional model

### 6.2 Description of the functional entities

The functional entities required by the COLP and COLR supplementary services above those of the basic call are as follows:

- FE1: service requesting entity;
- FE2: service providing entity;
- FE3: handling of connected line identity at international gateway;
- FE4: service information checking entity;
- FE5: connected party (provided information and COLR) requesting entity.

### 6.3 Relationship with a basic service

<https://standards.itec.ai/catalog/standards/sist/4f4a773d-fc0f-4236-b227-48748f933811/sist-ets-300-096-1997>

The relationship with a basic service is shown in figure 2.

NOTE: The basic call model is defined in CCITT Recommendation Q.71 [5], § 2.1, with the exception that r1 represents an outgoing call relationship from a CCA and r3 represents an incoming call relationship to a CCA.

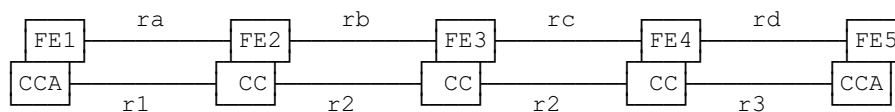
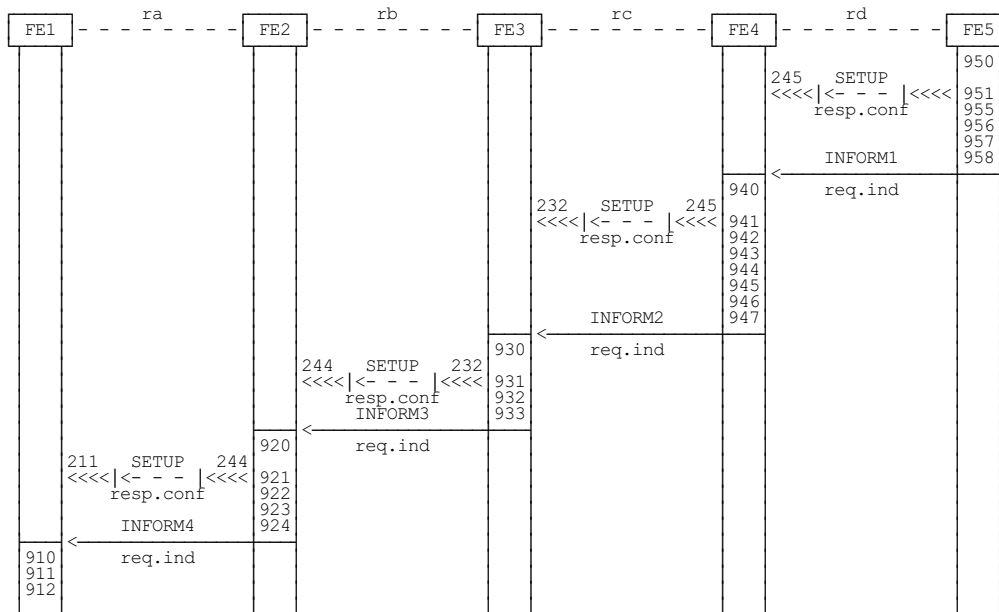


Figure 2: Example of a mapping of the functional model on a model for the basic call

## 7 Information flows

### 7.1 Information flow diagrams

Figure 3 shows the information flow diagram for the COLP and the COLR supplementary services.



**Figure 3**  
iTeh STANDARD PREVIEW  
(standards.iteh.ai)

### 7.2 Definition of individual information flows

Within the definitions below, PI can take one of the following three rules:  
<https://standards.iteh.ai/catalog/standards/sist/44a775d-1c0f-4256-b227-48748f933811/sist-ets-300-096-1997>

- presentation allowed;
- presentation restricted; or
- number not available.

Within the definitions below, SI can take one of the following three rules:

- user provided, verified and passed;
- network provided; or
- user provided, not-screened.