

**SLOVENSKI STANDARD**  
**SIST EN 13674-1:2011+A1:2017**  
**01-julij-2017**

---

**Železniške naprave - Zgornji ustroj - Tirnica - 1. del: Vignolove tirnice z maso 46 kg/m in več**

Railway applications - Track - Rail - Part 1: Vignole railway rails 46 kg/m and above

Bahnanwendungen - Oberbau - Schienen - Teil 1: Vignolschienen ab 46 kg/m

Applications ferroviaires - Voie - Rails - Partie 1 : Rails Vignole de masse supérieure ou égale à 46 kg/m

**ITeH STANDARD PREVIEW**  
**(standards.iteh.ai)**

**Ta slovenski standard je istoveten z: EN 13674-1:2011+A1:2017**

SIST EN 13674-1:2011+A1:2017  
<https://standards.iteh.ai/catalog/standards/sist/36289535-05b9-4dcf-a722-df53401a38a2/sist-en-13674-1-2011a1-2017>

---

**ICS:**

45.080	Tračnice in železniški deli	Rails and railway components
--------	-----------------------------	------------------------------

<b>SIST EN 13674-1:2011+A1:2017</b>	<b>en,fr,de</b>
-------------------------------------	-----------------

**iTeh STANDARD PREVIEW**  
**(standards.iteh.ai)**

[SIST EN 13674-1:2011+A1:2017](https://standards.iteh.ai/catalog/standards/sist/36289535-05f9-4dcf-a722-df53401a38a2/sist-en-13674-1-2011a1-2017)

<https://standards.iteh.ai/catalog/standards/sist/36289535-05f9-4dcf-a722-df53401a38a2/sist-en-13674-1-2011a1-2017>

EUROPEAN STANDARD

EN 13674-1:2011+A1

NORME EUROPÉENNE

EUROPÄISCHE NORM

May 2017

ICS 93.100

Supersedes EN 13674-1:2011

English Version

## Railway applications - Track - Rail - Part 1: Vignole railway rails 46 kg/m and above

Applications ferroviaires - Voie - Rails - Partie 1 : Rails  
Vignole de masse supérieure ou égale à 46 kg/m

Bahnwendungen - Oberbau - Schienen - Teil 1:  
Vignolschienen ab 46 kg/m

This European Standard was approved by CEN on 10 December 2010 and includes Amendment 1 approved by CEN on 25 December 2016.

CEN members are bound to comply with the CEN/CENELEC Internal Regulations which stipulate the conditions for giving this European Standard the status of a national standard without any alteration. Up-to-date lists and bibliographical references concerning such national standards may be obtained on application to the CEN-CENELEC Management Centre or to any CEN member.

This European Standard exists in three official versions (English, French, German). A version in any other language made by translation under the responsibility of a CEN member into its own language and notified to the CEN-CENELEC Management Centre has the same status as the official versions.

CEN members are the national standards bodies of Austria, Belgium, Bulgaria, Croatia, Cyprus, Czech Republic, Denmark, Estonia, Finland, Former Yugoslav Republic of Macedonia, France, Germany, Greece, Hungary, Iceland, Ireland, Italy, Latvia, Lithuania, Luxembourg, Malta, Netherlands, Norway, Poland, Portugal, Romania, Serbia, Slovakia, Slovenia, Spain, Sweden, Switzerland, Turkey and United Kingdom.



EUROPEAN COMMITTEE FOR STANDARDIZATION  
COMITÉ EUROPÉEN DE NORMALISATION  
EUROPÄISCHES KOMITEE FÜR NORMUNG

**CEN-CENELEC Management Centre: Avenue Marnix 17, B-1000 Brussels**

## Contents

Page

European foreword.....	5
Introduction .....	7
1 Scope.....	8
2 Normative references.....	8
3 Terms and definitions .....	8
4 Information to be supplied by the purchaser.....	9
5 Steel grades .....	10
6 Profile drawings/properties/mass .....	11
7 Manufacture .....	12
7.1 Product integrity .....	12
7.2 Blooms.....	12
7.3 Rails.....	12
7.4 Identification .....	12
7.4.1 Branding.....	12
7.4.2 Hot stamping.....	13
7.4.3 Cold stamping.....	14
7.4.4 Other identification.....	14
8 Qualifying tests .....	14
8.1 Procedure.....	14
8.2 Fracture toughness ( $K_{IC}$ ).....	15
8.2.1 Test pieces and test methods.....	15
8.2.2 Qualifying criteria.....	15
8.3 Fatigue crack growth rate .....	15
8.3.1 Test method .....	15
8.3.2 Test pieces .....	15
8.3.3 Number of tests and test conditions.....	15
8.3.4 Qualifying criteria.....	15
8.4 Fatigue test .....	16
8.4.1 Test method .....	16
8.4.2 Test pieces .....	16
8.4.3 Number of tests and test conditions.....	16
8.4.4 Qualifying criteria.....	16
8.5 Residual stress in rail foot .....	16
8.5.1 Test method .....	16
8.5.2 Test pieces .....	16
8.5.3 Measurements.....	16
8.5.4 Qualifying criteria.....	16
8.6 Variation of centre line running surface hardness of heat treated rails.....	17
8.7 Tensile strength and elongation.....	17
8.8 Segregation.....	18
8.9 Other qualifying requirements .....	18
9 Acceptance tests .....	18
9.1 Laboratory tests.....	18

9.1.1	General .....	18
9.1.2	Sampling and preparation of samples and test pieces.....	18
9.1.3	Chemical composition.....	18
9.1.4	Microstructure.....	23
9.1.5	Decarburisation .....	24
9.1.6	Oxide cleanness.....	24
9.1.7	Sulfur prints.....	24
9.1.8	Hardness .....	24
9.1.9	Tensile tests.....	25
9.1.10	Retest procedures .....	26
9.2	Dimension tolerances .....	26
9.2.1	Profile .....	26
9.2.2	Straightness, surface flatness and twist .....	27
9.2.3	Cutting and drilling.....	33
9.3	Gauges.....	33
9.4	Inspection for internal quality and surface quality .....	33
9.4.1	Internal quality.....	33
9.4.2	Surface quality.....	36
9.4.3	Checking of automated testing equipment.....	38
Annex A (normative) Rail profiles.....		49
Annex B (normative) Standard test method for the determination of the plane strain fracture toughness ( $K_{Ic}$ ) of rails .....		76
B.1	Test methods.....	76
B.2	Test pieces.....	76
B.3	Number of tests .....	76
B.4	Test conditions) .....	76
B.5	Analysis of test data .....	77
B.6	Reporting of results .....	77
Annex C (normative) Method for the determination of rail foot surface longitudinal residual stresses.....		82
C.1	Procedure .....	82
C.2	Strain gauges and their location .....	82
Annex D (normative) Limiting sulfur prints.....		85
Annex E (normative) Profile and drilling gauges.....		99
Annex F (normative) $\boxed{A_1}$ Microscopic examination of rail steels using standard diagrams to assess the content of non-metallic inclusions $\langle A_1 \rangle$ .....		113
F.1	General .....	113
F.1.1	Degree of purity .....	113
F.1.2	Standard diagram plate No. 1 .....	113
F.2	Preparation of specimens.....	113
F.3	Structure and use of standard diagram plate No. 1.....	113
F.3.1	Use of diagram plate No. 1 .....	113
F.3.2	Rating a single inclusion .....	114
F.3.3	Rating of very small inclusions.....	114
F.4	Test procedure .....	114
F.4.1	Magnification.....	114
F.4.2	Selection of inclusions .....	114
F.5	Evaluation.....	115
F.5.1	General .....	115
F.5.2	Method of evaluation.....	115
F.5.3	Calculation procedure for evaluation using method K.....	115

## EN 13674-1:2011+A1:2017 (E)

<b>Annex G (informative) Significant technical changes between this European standard and the previous edition.....</b>	<b>118</b>
<b>Annex ZA (informative) <math>\square_{A1}</math> Relationship between this European Standard and the Essential Requirements of EU Directive 2008/57/EC <math>\square_{A1}</math>.....</b>	<b>120</b>
<b>Bibliography.....</b>	<b>122</b>

**iTeh STANDARD PREVIEW**  
**(standards.iteh.ai)**

SIST EN 13674-1:2011+A1:2017

<https://standards.iteh.ai/catalog/standards/sist/36289535-05f9-4dcf-a722-df53401a38a2/sist-en-13674-1-2011a1-2017>

## European foreword

This document (EN 13674-1:2011+A1:2017) has been prepared by Technical Committee CEN/TC 256 "Railway applications", the secretariat of which is held by DIN.

This European Standard shall be given the status of a national standard, either by publication of an identical text or by endorsement, at the latest by November 2017, and conflicting national standards shall be withdrawn at the latest by November 2017.

Attention is drawn to the possibility that some of the elements of this document may be the subject of patent rights. CEN [and/or CENELEC] shall not be held responsible for identifying any or all such patent rights.

This document includes Amendment 1 approved by CEN on 25 December 2016.

This document supersedes <sup>A1</sup> EN 13674-1:2011 <sub>A1</sub>.

The start and finish of text introduced or altered by amendment is indicated in the text by tags <sup>A1</sup> <sub>A1</sub>.

This document has been prepared under a mandate given to CEN/CENELEC/ETSI by the European Commission and the European Free Trade Association, and supports essential requirements of EU Directive 2008/57/EC.

For relationship with EU Directive 2008/57/EC, see informative Annex ZA, which is an integral part of this document.

(standards.iteh.ai)

<sup>A1</sup> Annex G <sub>A1</sub> provides details of significant technical changes between this European Standard and the previous edition.

[SIST EN 13674-1:2011+A1:2017](https://standards.iteh.ai/catalog/standards/sist/36289535-05f9-4dcf-a722-45360b38e2f1a1/en-13674-1:2011+A1:2017)

[https://standards.iteh.ai/catalog/standards/sist/36289535-05f9-4dcf-a722-](https://standards.iteh.ai/catalog/standards/sist/36289535-05f9-4dcf-a722-45360b38e2f1a1/en-13674-1:2011+A1:2017)

This part of EN 13674 is the first of the series EN 13674, *Railway applications — Track — Rail*, which consists of the following parts:

- Part 1: *Vignole railway rails 46 kg/m and above;*
- Part 2: *Switch and crossing rails used in conjunction with Vignole railway rails 46 kg/m and above;*
- Part 3: *Check rails;*
- Part 4: *Vignole railway rails from 27 kg/m to, but excluding 46 kg/m.*

Other standards for rails and corresponding welding processes, already published or under preparation, are:

- EN 14587-1, *Railway applications — Track — Flash butt welding of rails — Part 1: New R220, R260, R260Mn and R350HT grade rails in a fixed plant;*
- EN 14587-2, *Railway applications — Track — Flash butt welding of rails — Part 2: New R220, R260, R260Mn and R350HT grade rails by mobile welding machines at sites other than at a fixed plant;*
- prEN 14587-3, *Railway applications — Track — Flash butt welding of rails — Part 3: Welding in association with crossing construction;*
- EN 14730-1, *Railway applications — Track — Aluminothermic welding of rails — Part 1: Approval of welding processes;*

**EN 13674-1:2011+A1:2017 (E)**

- EN 14730-2, *Railway applications — Track — Aluminothermic welding of rails — Part 2: Qualification of aluminothermic welders, approval of contractors and acceptance of welds*;
- EN 14811, *Railway applications — Track — Special purpose rail — Grooved and associated construction*;
- EN 15594, *Railway applications — Track — Restoration of rails by electric arc welding*;
- prEN xxxxx, *Railway applications — Track — Forged rail transitions*.

According to the CEN-CENELEC Internal Regulations, the national standards organisations of the following countries are bound to implement this European Standard: Austria, Belgium, Bulgaria, Croatia, Cyprus, Czech Republic, Denmark, Estonia, Finland, Former Yugoslav Republic of Macedonia, France, Germany, Greece, Hungary, Iceland, Ireland, Italy, Latvia, Lithuania, Luxembourg, Malta, Netherlands, Norway, Poland, Portugal, Romania, Serbia, Slovakia, Slovenia, Spain, Sweden, Switzerland, Turkey and the United Kingdom.

## **iTeh STANDARD PREVIEW** **(standards.iteh.ai)**

[SIST EN 13674-1:2011+A1:2017](https://standards.iteh.ai/catalog/standards/sist/36289535-05f9-4dcf-a722-df53401a38a2/sist-en-13674-1-2011a1-2017)

<https://standards.iteh.ai/catalog/standards/sist/36289535-05f9-4dcf-a722-df53401a38a2/sist-en-13674-1-2011a1-2017>



## Introduction

This Introduction provides an explanation of the concepts, and reasoning considered for this standard.

Whenever possible this part of EN 13674 is performance based, recognises the European Quality System standard EN ISO 9001 and requires manufacturers to offer the latest proven technology to consistently satisfy the demanding quality of the required product.

This part of EN 13674 has two major divisions:

- 1) qualifying tests;
- 2) acceptance tests.

The qualifying tests take into account performance requirements. They also include typical results from relevant acceptance tests.

The acceptance tests control those characteristics of the rail steel and rail that are of relevance to the production of high quality rails including heat treated rails and the demands of the railway.

To ensure the supply of high quality rails, some restrictions on production processes are considered.

The performance based standard applies to all procurements falling inside the requirements of the European Procurement Directive (93/38/EEC of 14<sup>th</sup> June 1993), taking into account safety implications and at the same time addressing modern production technology and the requirements of high-speed railways. As a result of the Directive it was recognised that there would be few opportunities (and these would have to be for transparent safety considerations) for derogation from the standard to operate between the user and the manufacturer.

The standard includes a prerequisite for all manufacturers to prove conformity against a set of qualifying test criteria at the time of tendering. The Qualifying tests include all "normal" acceptance test results plus new "type-casting" features such as fracture toughness, fatigue and residual stress. To provide users with the necessary confidence, acceptance limits have been based on results from rail known to have performed well in demanding track installations.

The standard includes a quality assurance and inspection clause as part of product integrity.

In order that quality management systems are consistent across all manufacturers and that users have the best assurance for the consistency of required product quality on this safety critical component of the track, this rail standard recommends that the manufacturers' quality assurance systems are at least equivalent to the requirements of EN ISO 9001. The inclusion of this requirement also reduces the need to incorporate detailed method and calibration descriptions on items such as normal chemical composition determination and the need to define more extensive testing.

**EN 13674-1:2011+A1:2017 (E)****1 Scope**

This European Standard specifies Vignole railway rails of 46 kg/m and greater linear mass, for conventional and high speed railway track usage.

Nine pearlitic steel grades are specified covering a hardness range of 200 HBW to 440 HBW and include non heat treated non alloy steels, non heat treated alloy steels, and heat treated non alloy steels and heat treated alloy steels .

There are 23 rail profiles specified in this standard.

Two classes of rail straightness are specified, differing in requirements for straightness, surface flatness and crown profile. Two classes of profile tolerances are specified.

**2 Normative references**

**A1** The following documents, in whole or in part, are normatively referenced in this document and are indispensable for its application. For dated references, only the edition cited applies. For undated references, the latest edition of the referenced document (including any amendments) applies. **A1**

EN 10163-1, *Delivery requirements for surface condition of hot-rolled steel plates, wide flats and sections — Part 1: General requirements*

**A1** *deleted text* **A1**

iTeh STANDARD PREVIEW

CEN/TR 10261, *Iron and steel — Review of available methods of chemical analysis*

EN 10276-1, *Chemical analysis of ferrous materials — Determination of oxygen in steel and iron — Part 1: Sampling and preparation of steel samples for oxygen determination*

EN ISO 6506-1, *Metallic materials — Brinell hardness test — Part 1: Test method (ISO 6506-1:2005)*

EN ISO 6892-1, *Metallic materials — Tensile testing — Part 1: Method of test at room temperature (ISO 6892-1:2009)*

EN ISO 14284, *Steel and iron — Sampling and preparation of samples for the determination of chemical composition (ISO 14284:1996)*

ISO 1099, *Metallic materials — Fatigue testing — Axial force-controlled method*

ISO 4968, *Steel — Macrographic examination by sulfur print (Baumann method)*

ISO 12108, *Metallic materials — Fatigue testing — Fatigue crack growth method*

ASTM E399, *Standard test method for linear-elastic plane-strain fracture toughness  $K_{Ic}$  of metallic materials*

**3 Terms and definitions**

For the purposes of this document, the following terms and definitions apply.

**3.1 heat**

liquid steel melt tapped out of a converter or electric arc furnace which includes after continuous casting a given number of blooms relating to the weight of the heat and the extension of the mixing zone. In the case of sequence casting the blooms belonging to the mixing zone should be clearly defined

### 3.2

#### **sequence**

any number of heats, of the same steel grade, which undergo continuous casting in tundishes. Tundishes may be used in parallel if the caster has many strands

### 3.3

#### **heat treated rail**

rail that has undergone accelerated cooling from austenitizing temperature during the metallurgical transformation period

### 3.4

#### **re-heated rail**

rolled rail that has undergone re-austenitization for heat treatment purposes

### 3.5

#### **mill heat treated rail**

heat treated rail that has not undergone re-austenitization after rolling

### 3.6

#### **rolling process**

process between the blooms leaving the heating furnace and exiting the finishing pass

### 3.7

#### **isothermal treatment process**

process whereby blooms are held for a period of time at an elevated temperature for diminishing the hydrogen content

Note 1 to entry: For maximum efficiency this is as near to (but below) the pearlite to austenite transformation temperature as is practically possible.

Note 2 to entry: This process is sometimes referred to as sub critical diffusion annealing.

### 3.8

#### **qualifying test**

special test and criteria which are relevant to some aspects of the service performance of rails. Acceptance tests also form part of the qualifying tests

### 3.9

#### **acceptance test**

test carried out as part of the process and product control system, normally on a heat, sequence or tonnage basis

### 3.10

#### **rail running surface**

curved surface of the rail head. Area between both gauge corners (transition points of the head inclination and the first head radius)

## **4 Information to be supplied by the purchaser**

The purchaser shall provide the supplier with the following information at the time of tender or order:

- a) rail profile (see Annex A);
- b) steel grade (see Clause 5);

**EN 13674-1:2011+A1:2017 (E)**

- c) profiles class, 'X' or 'Y' (see 9.2.1);
- d) straightness class 'A' or 'B' of rail as specified in 9.2.2;
- e) length(s) of rail (see Table 9);
- f) undrilled or drilled rail ends to take fish bolts, and location and dimensions of holes when required (see 9.2.3);
- g) any special treatment to be applied to bolt holes and corresponding special tolerances for bolt holes (see 9.2.3);
- h) cold stamping on the cut face (see 7.4.3);
- i) paint code requirements (see 7.4.4).

**5 Steel grades**

The applicable steel grades are given in Table 1. The hardness ranges of the steel grades shall conform to those given in Table 1.

For the steel grades in Table 1, the steel names and steel numbers were allocated in accordance with EN 10027-1 and EN 10027-2, respectively.

**ITeH STANDARD PREVIEW**  
**(standards.iteh.ai)**

[SIST EN 13674-1:2011+A1:2017](https://standards.iteh.ai/catalog/standards/sist/36289535-05f9-4dcf-a722-df53401a38a2/sist-en-13674-1-2011a1-2017)

<https://standards.iteh.ai/catalog/standards/sist/36289535-05f9-4dcf-a722-df53401a38a2/sist-en-13674-1-2011a1-2017>

**Table 1 — Steel grades**

Steel grade <sup>a</sup>		Hardness range (HBW)	Description	Branding lines
Steel name	Steel number			
R200	1.0521	200 to 240	Non-alloy (C-Mn) Non heat treated	No branding lines
R220	1.0524	220 to 260	Non-alloy (C-Mn) Non heat treated	-----
R260	1.0623	260 to 300	Non-alloy (C-Mn) Non heat treated	--- -----
R260Mn	1.0624	260 to 300	Non-alloy (C-Mn) Non heat treated	----- -----
R320Cr	1.0915	320 to 360	Alloy (1%Cr) Non heat treated	--- ----- -----
R350HT	1.0631	350 to 390 <sup>b</sup>	Non-alloy (C-Mn) Heat treated	--- -----
R350LHT	1.0632	350 to 390 <sup>b</sup>	Non-alloy (C-Mn) Heat treated	--- ----- ---
R370CrHT	1.0992	370 to 410	Alloy (C-Mn) Heat treated	--- ----- -----
R400HT	1.1254	400 to 440	Non-alloy (C-Mn) Heat treated	----- -----

<sup>a</sup> See Table 5 a) and Table 5 b) for chemical composition/mechanical properties.

<sup>b</sup> See Table 6 for hardness requirements.

## 6 Profile drawings/properties/mass

Rail profiles, dimensions, properties and linear masses shall be in accordance with Annex A. The tolerances of certain dimensions shall be as given in Table 7. All other quantities are informative only.

NOTE Linear masses have been calculated based on the density of steel of 7,85 kg/dm<sup>3</sup>.

## 7 Manufacture

### 7.1 Product integrity

Rails shall be produced under a comprehensive system of factory production control which shall ensure confidence in the conformity of the finished product. The system shall address this European Standard to ensure that the finished products consistently comply with requirements to achieve the product integrity necessary to provide assurance of product safety in track.

Manufacturers shall demonstrate continuing compliance, including documented evidence, with the factory production control system required.

NOTE Manufacturers having a factory production control system which complies with EN ISO 9001 are recognised as satisfying the minimum requirements specified by this clause.

### 7.2 Blooms

Blooms made from basic oxygen steel or electric arc furnace steel that has been secondary ladle arc refined, vacuum degassed and continuously cast, shall be used for the manufacture of rails.

### 7.3 Rails

7.3.1 The manufacturer shall operate a procedure for the effective removal of scale during the rolling and straightening processes.

7.3.2 The cross-sectional area of the rail shall not exceed one ninth that of the bloom from which the rail is rolled.

7.3.3 Rail straightening shall be by a two-stage roller straightening process which straightens the rail about its XX and YY axes as defined in the rail profiles shown in Annex A. End deviations or a localised deviation on the rail may be corrected using pressing.

NOTE Other mandatory processes are described in the relevant clauses within the standard.

### 7.4 Identification

#### 7.4.1 Branding

Brand marks shall be rolled in relief on one side and in the middle of the web (see Annex A) of each rail at least once every 4 m. The brand marks on the rails shall be clearly legible and shall be 20 mm to 25 mm high, raised between 0,6 mm and 1,3 mm.

The branding line(s) to denote grade shall be 50 mm in length for the long branding line and 25 mm in length for the short branding line.

The brand marks shall include:

- a) identification of the mill;
- b) steel grade as shown in Table 1;
- c) last two figures of the year of manufacture;
- d) rail profile identification as shown in Annex A.

## EXAMPLES

ROLLING MILL ——— 07 60 E1

(60 E1 profile rail rolled 2007, non-alloy rail steel grade R260).

ROLLING MILL ——— ——— 07 60 E1

(60 E1 profile rail rolled 2007, non-alloy heat treated rail steel grade R350HT).

NOTE The sequence of the branding marks is at the discretion of the manufacturer.

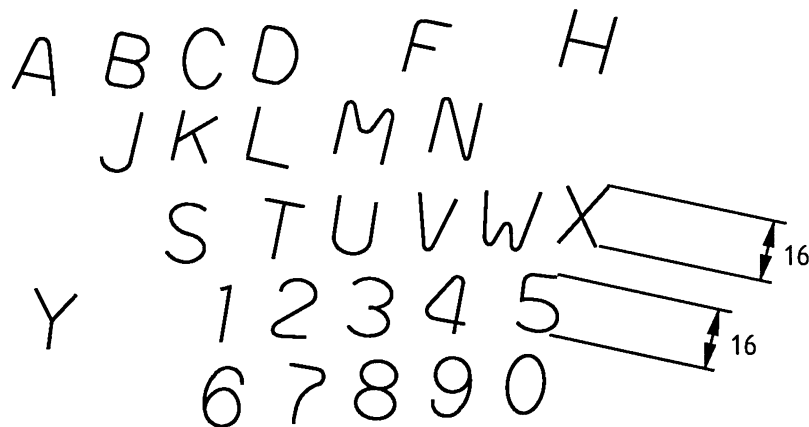
### 7.4.2 Hot stamping

In addition to the branding requirements of 7.4.1 each rail shall be identified by a numerical and/or alphabetical code system, hot stamped on the non-branded side of the rail web by machine and each rail shall be hot stamped at least once every 10 m.

**A1** NOTE 1 A rail can display different indications of position of the rail in the bloom (A,B...Y) along its length. **A1**

**A1** NOTE 2 **A1** Subsequent cutting could result in more than one rail length having the same identity.

The figures and letters used shall be clearly legible and shall be 16 mm high. The stamped characters shall have a flat or radius face (1 mm to 1,5 mm wide) with bevels on each side. The letters and numbers shall be on a 10° angle from vertical and shall have rounded corners. The stamping shall be between 0,5 mm and 1,5 mm in depth along the centre of the web. The design shall be as shown in Figure 1.



**Figure 1 — Design of letters and numbers on a 10° angle for rail stamps**

The identification system employed shall be such as to enable the hot stamped marking to be collated with the:

- number of the heat from which the rail has been rolled;
- number of the strand and position of bloom within the strand;
- position of the rail in the bloom (A, B ... Y).