

ISO

INTERNATIONAL ORGANIZATION FOR STANDARDIZATION

ISO RECOMMENDATION R 337

SEMI-TRAILER FIFTH WHEEL KINGPIN

1st EDITION

September 1963

COPYRIGHT RESERVED

The copyright of ISO Recommendations and ISO Standards belongs to ISO Member Bodies. Reproduction of these documents, in any country, may be authorized therefore only by the national standards organization of that country, being a member of ISO.

For each individual country the only valid standard is the national standard of that country.

Printed in Switzerland

Also issued in French and Russian. Copies to be obtained through the national standards organizations.

BRIEF HISTORY

The ISO Recommendation R 337, *Semi-Trailer Fifth Wheel Kingpin*, was drawn up by Technical Committee ISO/TC 22, *Automobiles*, the Secretariat of which is held by the Association Française de Normalisation (AFNOR).

Work on this question by the Technical Committee began in 1958 and led, in 1960, to the adoption of a Draft ISO Recommendation.

In April 1961, this Draft ISO Recommendation (No. 444) was circulated to all the ISO Member Bodies for enquiry. It was approved by the following Member Bodies:

Australia	Hungary	Romania
Austria	Iran	Sweden
Chile	Italy	Switzerland
Colombia	Japan	United Kingdom
Czechoslovakia	Netherlands	U.S.S.R.
France	New Zealand	Yugoslavia
Germany	Poland	
Greece	Portugal	

Two Member Bodies opposed the approval of the Draft:

Belgium, U.S.A.

The Draft ISO Recommendation was then submitted by correspondence to the ISO Council, which decided, in September 1963, to accept it as an ISO RECOMMENDATION.

SEMI-TRAILER FIFTH WHEEL KINGPIN

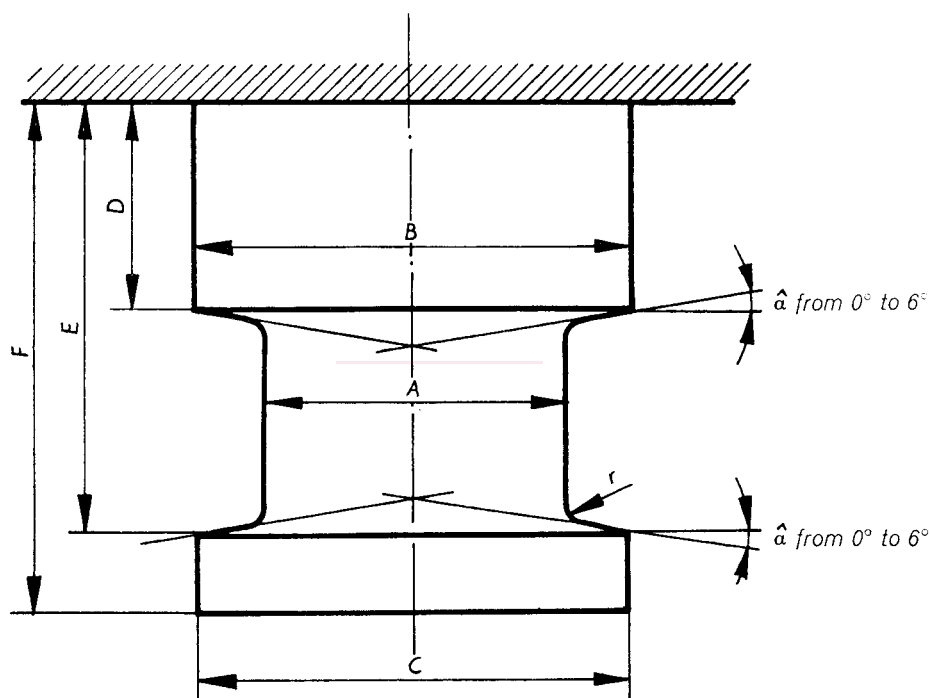
1. SCOPE

This ISO Recommendation deals with the 2 inch (50.8 mm) diameter fifth wheel kingpin.

The 2 inch (50.8 mm) fifth wheel kingpin (see figure below) is used for coupling semi-trailers to prime movers, taking into account the limitations of weight generally laid down by official requirements.

NOTE. — If, for extra heavy-duty vehicles, the 2 inch (50.8 mm) fifth wheel kingpin is not sufficient, a fifth wheel kingpin 3.5 inches (89 mm) diameter may be used.

2. DIMENSIONS



Dimen- sions	inches	millimetres
<i>A</i>	2.000 ± 0.005	50.8 ± 0.1
<i>B</i>	2.875 ± 0.005	73 ± 0.1
<i>C</i>	2.8125 ± 0.015	71.5 ± 0.4
<i>D</i>	1.3125 ± 0.0625	35 $\begin{smallmatrix} 0 \\ -3 \end{smallmatrix}$

Dimen- sions	inches	millimetres
<i>E</i>	2.750 + 0.0625	70 $\begin{smallmatrix} +1.5 \\ 0 \end{smallmatrix}$
<i>F</i>	3.3125 - 0.0625	84 $\begin{smallmatrix} 0 \\ -1.5 \end{smallmatrix}$
<i>r</i>	0.125	3 $\begin{smallmatrix} +0.5 \\ 0 \end{smallmatrix}$