



~~Designation: E345-93 (Reapproved 2002)~~ Designation: E 345 – 93 (Reapproved 2008)

## Standard Test Methods of Tension Testing of Metallic Foil<sup>1</sup>

This standard is issued under the fixed designation E 345; the number immediately following the designation indicates the year of original adoption or, in the case of revision, the year of last revision. A number in parentheses indicates the year of last reapproval. A superscript epsilon ( $\epsilon$ ) indicates an editorial change since the last revision or reapproval.

*This standard has been approved for use by agencies of the Department of Defense.*

### 1. Scope

1.1 These test methods cover the tension testing of metallic foil at room temperature in thicknesses less than 0.006 in. (0.150 mm).

NOTE 1—Exception to these methods may be necessary in individual specifications or test methods for a particular material.

~~1.2 The values stated in inch-pound units are to be regarded as the standard. The SI values in parentheses are for information only.~~

~~1.2 Units—The values stated in inch-pound units are to be regarded as standard. The values given in parentheses are mathematical conversions to SI units that are provided for information only and are not considered standard.~~

1.3 *This standard does not purport to address all of the safety concerns, if any, associated with its use. It is the responsibility of the user of this standard to establish appropriate safety and health practices and determine the applicability of regulatory limitations prior to use.*

### 2. Referenced Documents

2.1 *ASTM Standards:*<sup>2</sup>

B 193 Test Method for Resistivity of Electrical Conductor Materials

E 4 Practices for Force Verification of Testing Machines

E 6 Terminology Relating to Methods of Mechanical Testing

~~E 8 Test Methods for Tension Testing of Metallic Materials<sup>3</sup>~~

~~E 8M Test Methods for Tension Testing of Metallic Materials (Metric)<sup>3</sup>~~ E 8M Test Methods for Tension Testing of Metallic Materials

E 29 Practice for Using Significant Digits in Test Data to Determine Conformance with Specifications

E 252 Test Method for Thickness of Foil, Thin Foil Sheet, and Film by Weighing Mass Measurement

E 796 Test Method for Ductility Testing of Metallic Foil

### 3. Terminology

3.1 The definitions of terms relating to tension testing appearing in Terminology E 6 apply to the terms used in these methods of tension testing.

### 4. Significance and Use

4.1 Tension tests provide information on the strength and ductility of materials under uniaxial tensile stresses. This information may be useful in comparisons of materials, alloy development, quality control, and design.

4.2 The results of tension tests from selected portions of a part or material may not totally represent the strength and ductility of the entire end product of its in-service behavior in different environments.

4.3 These test methods are considered satisfactory for acceptance testing of commercial shipments since the methods have been used extensively for these purposes.

4.4 Tension tests provide a means to determine the ductility of materials through the measurement either of elongation or reduction of area. However, as specimen thickness is reduced, tension tests may become less useful for the determination of

<sup>1</sup> These test methods are under the jurisdiction of ASTM Committee E28 on Mechanical Testing and are the direct responsibility of Subcommittee E28.04 on Uniaxial Testing.

Current edition approved Aug. 15, 1993. Published October 1993. Originally published as E345-68T. Last previous edition E345-87(1992)<sup>ε1</sup>.

Current edition approved May 1, 2008. Published December 2008. Originally approved in 1968. Last previous edition approved in 2002 as E 345 – 87 (2002).

<sup>2</sup> For referenced ASTM standards, visit the ASTM website, [www.astm.org](http://www.astm.org), or contact ASTM Customer Service at [service@astm.org](mailto:service@astm.org). For *Annual Book of ASTM Standards*, Vol 02.03, volume information, refer to the standard's Document Summary page on the ASTM website.

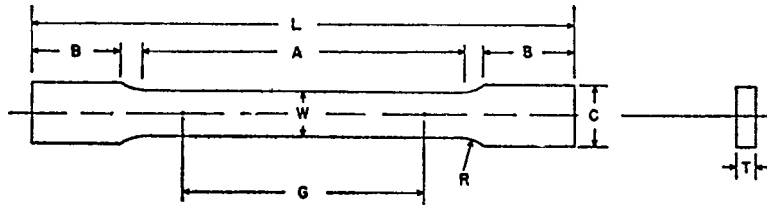
ductility. For these purposes Test Method E 796 presents an alternative procedure for measuring ductility.

**5. Apparatus**

5.1 *Testing Machines*—Machines used for tension testing shall conform to the requirements of Practices E 4. The loads used in determining tensile strength, yield strength, and yield point shall be within the verified loading range of the testing machine as defined in Practices E 4.

5.2 *Gripping Devices:*

5.2.1 *General*—Various types of gripping devices may be used to transmit the measured load applied by the testing machine to the test specimen. To ensure axial tensile stress within the gage length, the axis of the test specimen must coincide with the center line of the heads of the testing machine. Any departure from this center line may introduce bending stresses that are not included in the usual stress computation (load divided by cross-sectional area).



	Dimensions			
	Specimen			
	Type A		Type B	
	in.	mm	in.	mm
G—Gage length	2.000 ± 0.005	50.0 ± 0.1	5	125
W—Width	0.500 ± 0.010	12.50 ± 0.25	0.500	12.5
T—Thickness	thickness of foil		thickness of foil	
R—Radius of fillet, min	3/4	19	...	...
L—Overall Length, min	8	200	9	230
A—Length of reduced section, min	2 1/4	60	...	...
B—Length of grip section, min	2	50	...	...
C—Width of grip section, approx.	3/4	20	0.500	12.5

NOTE 1—For Type A specimens, the ends of the reduced section shall not differ in width by more than 0.002 in. (0.05 mm). Also, there may be a gradual decrease in width from the ends to the center, but the width at either end shall not be more than 0.005 in. (0.10 mm) larger than the width at the center.

NOTE 2—The dimension T is the thickness of the test specimen as provided for in the applicable material specifications.

FIG. 1 Foil Tension Test Specimen

5.2.2 *Wedge Grips*—Testing machines usually are equipped with wedge grips. These wedge grips generally furnish a satisfactory means of gripping long specimens of ductile materials in the thicker foil gages. If, for any reason, one grip of a pair advances farther than the other as the grips tighten, an undesirable bending stress may be introduced. When liners are used behind the wedges, they must be of the same thickness and their faces must be flat and parallel. For proper gripping, it is desirable that the entire length of the serrated face of each wedge be in contact with the specimen. A buffer material such as 320-grit silicon carbide paper may be inserted between the specimen and serrated faces to minimize tearing of specimens.

5.2.3 *Smooth Face Grips*—For foils less than 0.003 in. (0.076 mm) thickness, it may be desirable that the grips have smooth faces and that the gripping pressure be about 100 psi (0.7 MPa) for each 0.001 in. (0.025 mm) of specimen thickness.

**6. Test Specimen**

6.1 *General*—Test specimens shall be prescribed in the product specification for the material being tested. If a Type A specimen is used, all specimen dimensions, test procedures, and calculations shall be in compliance with those shown in Test Methods E8 or E8ME 8/E 8M.

6.2 *Type A Specimen*—Type A specimens shall be in accordance with the 1/2-in. (12.5-mm) sheet-type specimen shown in Fig. 1. To avoid lateral buckling in tests of some materials, the minimum radius of the fillet should be 3/4 in. (19 mm), or the width of the grip ends should be only slightly larger than the width of the reduced section, or both; and the reduced section should be at least 20 % longer than the gage length.

6.3 *Type B Specimens*—Type B specimens shall be in accordance with the 1/2-in. (12.5-mm) wide parallel sided specimen shown in Fig. 1.

**7. Procedures**

7.1 *Type A Specimen Preparation*—The specimens can be machined in packs by use of a milling-type cutter. The machined specimens shall be examined under about 20× magnification to determine that the edges are smooth and that there are no surface

scratches or creases. Specimens showing discernible scratches, creases, or edge discontinuities shall be rejected. The milling cutter shall be sharpened or renewed when necessary. When machining some thicknesses and tempers of material it may be necessary to interleave the samples with hard aluminum sheet, a plastic, or other suitable material. For some materials it may be desirable to polish the edges of the specimens, either mechanically or by electropolishing.

7.2 *Type B Specimen Preparation*—The specimens, particularly of soft and of thin hard metals, may be prepared by shearing, for example, by use of a double-bladed cutter (Fig. 2) or by slitting.<sup>3</sup> The cutting edges should be lubricated, if necessary with a material such as stearic acid in alcohol or another suitable material. The finished specimens shall be examined under about 20× magnification to determine that the edges are smooth and there are no surface scratches or creases. Specimens showing discernible surface scratches, creases, or edge discontinuities shall be rejected.

7.3 *Specimen Measurement:*

7.3.1 *Thickness:*

7.3.1.1 Thickness of specimens taken from soft foils or from foils 0.002 in. (0.05 mm) and thinner shall be determined to an accuracy of 2 % of the thickness by weighing in accordance with Test Method E 252 or by measuring devices. When using Test Method E 252, the specimens themselves shall be weighed when it is practical. At least two specimens shall be weighed together. When Type B specimens are not used for weighing, a sample in accordance with Test Method E 252 may be used when taken from an area adjacent to that from which the test specimens were taken.

7.3.1.2 The thickness of specimens taken from hard materials or materials 0.001 in. (0.0245 mm) and greater in thickness may be determined by use of an optimizer, an electrical-type measuring device, or vernier micrometer, provided that the thickness is measured to at least the nearest 2 %.

NOTE 2—When specimens or samples are weighed, the thickness shall be computed to the nearest 0.0001 in. (0.0025 mm) and preferably to the nearest 0.00001 in. (0.00025 mm) by use of the formula:

$$T = W/AD \tag{1}$$

where:

where:

- $T$  = thickness of specimen or sample, in.,
- $W$  = weight of specimen or sample, g,
- $A$  = area of specimen or sample, in.<sup>2</sup>, and
- $D$  = density of material, g/in.<sup>3</sup>(see Appendix).

7.3.2 *Width*—Measure and record the specimen width dimension to the nearest 0.001 in. (0.025 mm).

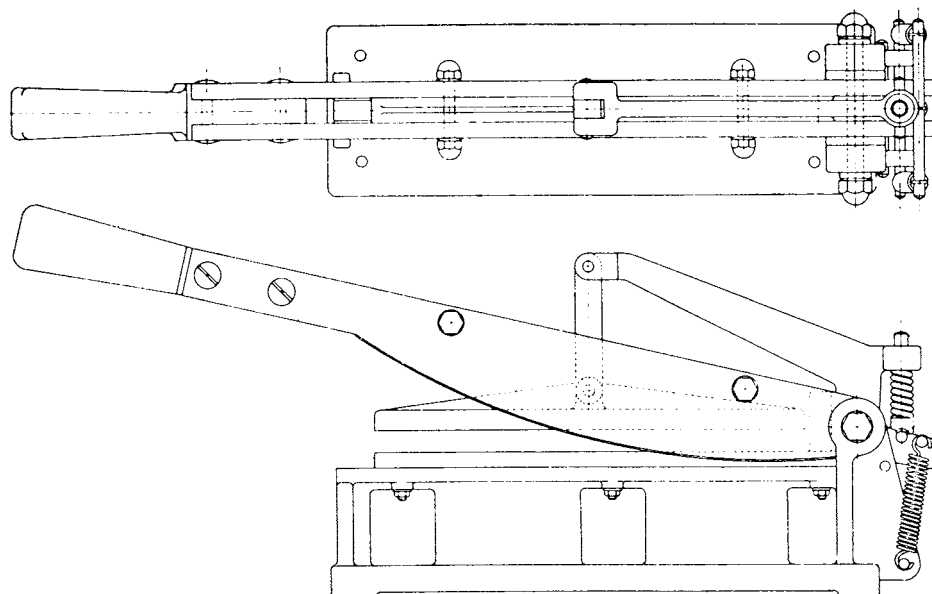


FIG. 2 Double-Bladed Cutter for Making Type B Specimens