



# SLOVENSKI STANDARD

## oSIST prEN 12790-1:2019

01-september-2019

---

### Izdelki za otroke - Sklopne zibelke - 1. del: Sklopne zibelke za otroke, ki še ne poskušajo sedeti

Child care articles - Reclined cradles - Part 1: Reclined cradles for children up to when they try to sit up

Artikel für Säuglinge und Kleinkinder - Kinderliegesitze - Teil 1: Kinderliegesitze für Kinder, bis sie versuchen sich aufzusetzen

Articles de puériculture - Transats - Partie 1: Transats pour enfants jusqu'à ce qu'ils essayent de s'asseoir

<https://standards.iteh.ai/catalog/standards/sist/c9d55033-fb93-450f-a8db-6371e818ad32/osist-pr-en-12790-1-2019>

Ta slovenski standard je istoveten z: prEN 12790-1

---

#### ICS:

97.190

Otroška oprema

Equipment for children

oSIST prEN 12790-1:2019

en,fr,de

**iTeh STANDARD PREVIEW**  
**(standards.iteh.ai)**

[oSIST prEN 12790-1:2019](https://standards.iteh.ai/catalog/standards/sist/c9d55033-fb93-450f-a8db-6371c818ad32/osist-pren-12790-1-2019)

<https://standards.iteh.ai/catalog/standards/sist/c9d55033-fb93-450f-a8db-6371c818ad32/osist-pren-12790-1-2019>

EUROPEAN STANDARD  
NORME EUROPÉENNE  
EUROPÄISCHE NORM

**DRAFT**  
**prEN 12790-1**

June 2018

ICS 97.190

Will supersede EN 12790:2009

English Version

## Child care articles - Reclined cradles - Part 1: Reclined cradles for children up to when they try to sit up

This draft European Standard is submitted to CEN members for enquiry. It has been drawn up by the Technical Committee CEN/TC 252.

If this draft becomes a European Standard, CEN members are bound to comply with the CEN/CENELEC Internal Regulations which stipulate the conditions for giving this European Standard the status of a national standard without any alteration.

This draft European Standard was established by CEN in three official versions (English, French, German). A version in any other language made by translation under the responsibility of a CEN member into its own language and notified to the CEN-CENELEC Management Centre has the same status as the official versions.

CEN members are the national standards bodies of Austria, Belgium, Bulgaria, Croatia, Cyprus, Czech Republic, Denmark, Estonia, Finland, Former Yugoslav Republic of Macedonia, France, Germany, Greece, Hungary, Iceland, Ireland, Italy, Latvia, Lithuania, Luxembourg, Malta, Netherlands, Norway, Poland, Portugal, Romania, Serbia, Slovakia, Slovenia, Spain, Sweden, Switzerland, Turkey and United Kingdom.

[oSIST prEN 12790-1:2019](https://standards.iteh.ai/catalog/standards/sist/c9d55033-b93-450f-a8db-6371c818ad32/osist-pren-12790-1-2019)

Recipients of this draft are invited to submit, with their comments, notification of any relevant patent rights of which they are aware and to provide supporting documentation.

**Warning** : This document is not a European Standard. It is distributed for review and comments. It is subject to change without notice and shall not be referred to as a European Standard.



EUROPEAN COMMITTEE FOR STANDARDIZATION  
COMITÉ EUROPÉEN DE NORMALISATION  
EUROPÄISCHES KOMITEE FÜR NORMUNG

**CEN-CENELEC Management Centre: Rue de la Science 23, B-1040 Brussels**

## Contents

	Page
European foreword.....	6
<b>1 Scope .....</b>	<b>7</b>
<b>2 Normative references .....</b>	<b>7</b>
<b>3 Terms and definitions.....</b>	<b>8</b>
<b>4 Test equipment .....</b>	<b>8</b>
4.1 Test mass A .....	8
4.2 Test mass B .....	9
4.3 Small parts cylinder.....	10
4.4 Feeler gauge.....	11
4.5 Test equipment for handle strength test .....	11
4.6 Test probes for finger entrapment.....	14
4.6.1 Test probes with hemispherical end.....	14
4.6.2 Shape assessment probe.....	14
4.7 Test equipment for handle locking mechanism strength test .....	15
4.8 Test surface for the stability test .....	16
4.9 Test mass C.....	16
4.10 Test mass $D_0$ .....	17
4.11 Wood block.....	18
<b>5 General requirements and test conditions .....</b>	<b>18</b>
5.1 Product conditioning .....	18
5.2 Test conditions .....	19
5.3 Application of forces.....	19
5.4 Tolerances.....	19
5.5 Order of tests.....	19
<b>6 Chemical hazards.....</b>	<b>19</b>
6.1 General .....	19
6.2 Migration of certain elements (see A.2) .....	19
6.3 Formaldehyde (see A.2) .....	20
6.4 Colorants (see A.2) .....	20
6.5 Aniline (see A.2) .....	21
<b>7 Thermal hazards.....</b>	<b>21</b>
7.1 Requirement .....	21

7.2	Test method .....	21
8	Mechanical hazards.....	22
8.1	General.....	22
8.1.1	Determination of the junction line .....	22
8.1.2	Positioning of the test mass.....	22
8.1.3	Determination of protected volume.....	23
8.2	Hazards due to sound level.....	24
8.2.1	Requirement.....	24
8.2.2	Test method .....	24
8.3	Entrapment hazards .....	24
8.3.1	Requirements .....	24
8.3.2	Test methods .....	25
8.4	Hazards due to moving parts .....	25
8.4.1	Requirements for compression points.....	25
8.4.2	Requirements for shear points .....	25
8.5	Hazards due to falling of the child .....	25
8.5.1	Angle of seat unit.....	25
8.5.2	Restraint system.....	26
8.5.3	Locking mechanism(s) for carrying handle(s) .....	27
8.6	Hazards due to folding of the product.....	31
8.6.1	Requirements .....	31
8.6.2	Test methods .....	31
8.7	Hazards from entanglement in cords, ribbons and similar parts .....	32
8.7.1	Requirements .....	32
8.7.2	Test method .....	33
8.8	Choking and ingestion hazard.....	33
8.8.1	Requirements .....	33
8.8.2	Test methods .....	33
8.9	Suffocation hazards from plastic packaging .....	34
8.10	Hazards from edges, corners and protruding parts .....	34
8.11	Hazards from inadequate structural integrity .....	34
8.11.1	Static strength .....	34
8.11.2	Reclining system.....	35
8.11.3	Durability of powered mechanisms .....	35
8.11.4	Durability of reclined cradles with carrying handle(s) .....	36
8.11.5	Strength of carrying handle(s) locking mechanism(s).....	36

## prEN 12790-1:2018 (E)

8.11.6	Toy bar attachment integrity .....	38
8.12	Hazards from inadequate stability.....	39
8.12.1	Requirements .....	39
8.12.2	Test method.....	39
8.13	Hazards from possible slippage of the reclined cradle.....	40
8.13.1	Requirements .....	40
8.13.2	Test method.....	40
8.14	Electrical hazards .....	40
8.14.1	General .....	40
8.14.2	Leakage prevention .....	41
8.14.3	Test methods.....	41
9	Product information.....	41
9.1	General .....	41
9.2	Marking of the product.....	41
9.2.1	General requirements.....	41
9.2.2	Requirements for reclined cradles with electrical components.....	42
9.3	Purchase information .....	43
9.4	Instructions for use.....	44
9.4.1	General requirements.....	44
9.4.2	Requirements for reclined cradles with electrical components.....	45
Annex A (informative)	Rationales .....	46
A.1	Introduction .....	46
A.1.1	General .....	46
A.1.2	Static reclined cradle.....	46
A.1.3	Rocking reclined cradle .....	46
A.1.4	Bouncing reclined cradle.....	46
A.2	Chemical hazards (see Clause 6).....	46
A.3	Thermal hazards (see Clause 7) .....	46
A.4	Mechanical hazards (see Clause 8).....	47
A.4.1	Protective volume (see 8.1.3) .....	47
A.4.2	Hazards due to sound level (see 8.2).....	47
A.4.3	Entrapment hazards (see 8.3).....	47
A.4.4	Hazards due to moving parts (see 8.4) .....	47
A.4.5	Entanglement hazards (see 8.7).....	47
A.4.6	Choking and ingestion hazards (see 8.8) .....	47
A.4.7	Suffocation hazards (see 8.9) .....	48

A.4.8	Hazardous edges, corners and protruding parts (see 8.10).....	48
A.4.9	Hazards from inadequate structural integrity (see 8.11) .....	48
A.4.10	Hazards due to release of toy bar (see 8.11.6) .....	48
A.4.11	Hazards from slippage of the reclined cradle (see 8.13) .....	48
Annex B (normative)	Warnings .....	49
Annex C (informative)	A-deviations.....	50
Bibliography	.....	51

## iTeh STANDARD PREVIEW (standards.iteh.ai)

[oSIST prEN 12790-1:2019](https://standards.iteh.ai/catalog/standards/sist/c9d55033-fb93-450f-a8db-6371c818ad32/osist-pren-12790-1-2019)

<https://standards.iteh.ai/catalog/standards/sist/c9d55033-fb93-450f-a8db-6371c818ad32/osist-pren-12790-1-2019>

## prEN 12790-1:2018 (E)

### European foreword

This document (prEN 12790-1:2018) has been prepared by Technical Committee CEN/TC 252 “Child care articles”, the secretariat of which is held by AFNOR.

This document is currently submitted to the CEN Enquiry.

This document will supersede EN 12790:2009.

This document has been prepared under a mandate given to CEN by the European Commission and the European Free Trade Association.

## iTeh STANDARD PREVIEW (standards.iteh.ai)

[oSIST prEN 12790-1:2019](https://standards.iteh.ai/catalog/standards/sist/c9d55033-fb93-450f-a8db-6371c818ad32/osist-pren-12790-1-2019)

<https://standards.iteh.ai/catalog/standards/sist/c9d55033-fb93-450f-a8db-6371c818ad32/osist-pren-12790-1-2019>



## 1 Scope

This document specifies safety requirements and the corresponding test methods for fixed or folding reclined cradles intended for children up to when they start try to sit up.

This document applies also to car seats complying with ECE R44 or ECE R129 that can be used as reclined cradles according to manufacturer's instructions. If usage as reclined cradle is not included in the product information or marketing material, car seats are excluded from the scope of this document.

If a reclined cradle has several functions or can be converted into another function the relevant European standards apply to it.

## 2 Normative references

The following documents are referred to in the text in such a way that some or all of their content constitutes requirements of this document. For dated references, only the edition cited applies. For undated references, the latest edition of the referenced document (including any amendments) applies.

EN 71-2:2011+A1:2014, *Safety of toys - Part 2: Flammability*

EN 71-3, *Safety of toys – Part 3: Migration of certain elements*

EN 71-10:2005, *Safety of toys - Part 10: Organic chemical compounds - Sample preparation and extraction*

EN 71-11, *Safety of toys - Part 11: Organic chemical compounds - Methods of analysis*

EN 622-1, *Fibreboards - Specifications - Part 1: General requirements*

EN 717-1, *Wood-based panels - Determination of formaldehyde release - Part 1: Formaldehyde emission by the chamber method*  
<https://standards.iteh.ai/catalog/standards/sist/c9d55033-fb93-450f-a8db-6371c818ad32/osist-pren-12790-1-2019>

EN 61558-2-7, *Safety of power transformers, power supplies, reactors and similar products – Part 2-7: Particular requirements and tests for transformers and power supplies for toys (IEC 61558-2-7)*

EN 61558-2-16, *Safety of transformers, reactors, power supply units and similar products for supply voltages up to 1 100 V - Part 2-16: Particular requirements and tests for switch mode power supply units and transformers for switch mode power supply units (IEC 61558-2-16)*

EN 62115:2005, *Electric toys – Safety (IEC 62115:2003 + A1:2004)*

EN ISO 3746:2010, *Acoustics - Determination of sound power levels and sound energy levels of noise sources using sound pressure - Survey method using an enveloping measurement surface over a reflecting plane (ISO 3746:2010)*

EN ISO 14184-1, *Textiles - Determination of formaldehyde - Part 1: Free and hydrolysed formaldehyde (water extraction method) (ISO 14184-1)*

EN ISO 14362-1, *Textiles - Methods for determination of certain aromatic amines derived from azo colorants - Part 1: Detection of the use of certain azo colorants accessible with and without extracting the fibres (ISO 14362-1)*

EN ISO 17234-1, *Leather - Chemical tests for the determination of certain azo colorants in dyed leathers - Part 1: Determination of certain aromatic amines derived from azo colorants (ISO 17234-1)*

ISO 7619-1, *Rubber, vulcanized or thermoplastic — Determination of indentation hardness — Part 1: Durometer method (Shore hardness)*

## prEN 12790-1:2018 (E)

### 3 Terms and definitions

For the purposes of this document, the following terms and definitions apply.

ISO and IEC maintain terminological databases for use in standardization at the following addresses:

- IEC Electropedia: available at <http://www.electropedia.org/>
- ISO Online browsing platform: available at <http://www.iso.org/obp>

#### 3.1

##### **reclined cradle**

article intended to accommodate a child in a reclined position

Note to entry: Reclined cradles may be static, rocking or bouncing and may have an adjustable backrest and/or seat, see A.1.

#### 3.2

##### **seat unit**

part of the reclined cradle that support the child, either in the form of a hammock or composed by a seat and a backrest

#### 3.3

##### **restraint system**

system to restrain the child within the reclined cradle

#### 3.4

##### **crotch restraint**

device designed to pass between the child's legs to prevent the child from sliding forward

<https://standards.iteh.ai/catalog/standards/sist/c9d55033-fb93-450f-a8db-6371c818ad32/osist-pren-12790-1-2019>

#### 3.5

##### **carrying handle**

component to enable the reclined cradle, fully deployed for use, to be carried by hand

#### 3.6

##### **junction line**

intersection of the seat and the backrest

#### 3.7

##### **toy bar**

any bar or mobile connected to the frame of the product in any location with one or more attachment points typically used to suspend toys over the occupant

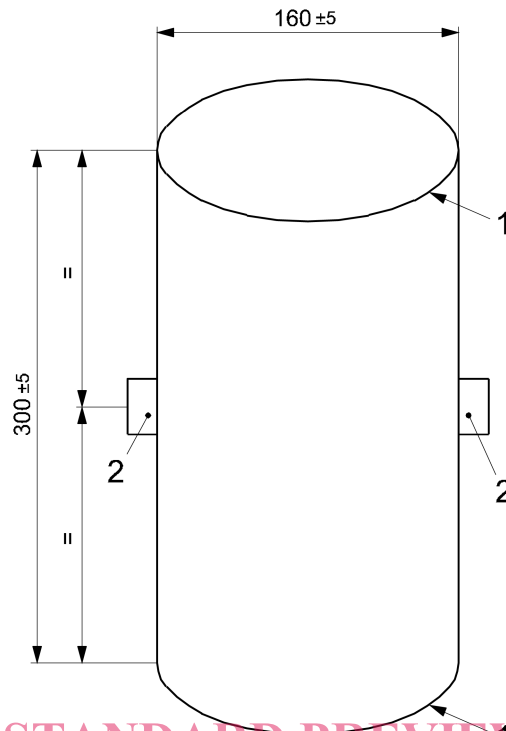
Note to entry: Canopies and carrying handles, fixed and rotating, are not considered a toy bar regardless of whether they allow for the attachment of toys.

### 4 Test equipment

#### 4.1 Test mass A

Test mass A is a rigid cylinder ( $160 \pm 5$ ) mm in diameter and ( $300 \pm 5$ ) mm in height, having a mass of  $9_0^{+0,01}$  kg and with its centre of gravity in the centre of the cylinder. All edges shall have a radius of ( $5 \pm 1$ ) mm. Two anchorage points shall be provided. These shall be positioned ( $150 \pm 2,5$ ) mm from the base and at  $180^\circ$  to each other around the circumference (see Figure 1).

Dimensions in millimetres



iTeh STANDARD PREVIEW  
(standards.iteh.ai)

#### Key

- 1 radius:  $(5 \pm 1)$  mm
- 2 two anchorage points

oSIST prEN 12790-1:2019

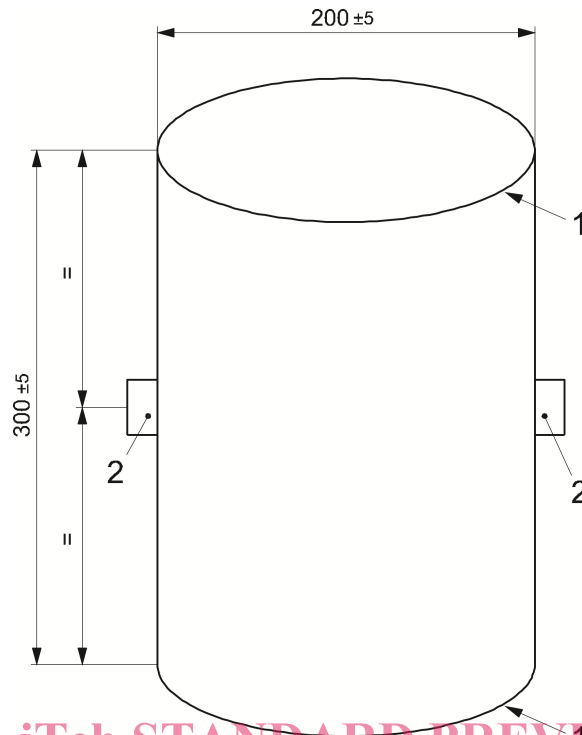
<https://standards.iteh.ai/catalog/standards/sist/c9d55033-fb93-450f-a8db-6371c818a4e2/osist-pr-en-12790-1-2019>

Figure 1 — Test mass A

#### 4.2 Test mass B

Test mass B is a rigid cylinder  $(200 \pm 5)$  mm in diameter and  $(300 \pm 5)$  mm in height, having a mass of  $15_0^{+0,01}$  kg and with its centre of gravity in the centre of the cylinder. All edges shall have a radius of  $(5 \pm 1)$  mm. Two anchorage points shall be provided. These shall be positioned  $(150 \pm 2,5)$  mm from the base and at  $180^\circ$  to each other around the circumference (see Figure 2).

Dimensions in millimetres



iTeh STANDARD PREVIEW  
(standards.iteh.ai)

**Key**

- 1 radius:  $(5 \pm 1)$  mm
- 2 two anchorage points

oSIST prEN 12790-1:2019

<https://standards.iteh.ai/catalog/standards/sist/c9d55033-fb93-450f-a8db-639c8f0ad52/osist-pr-en-12790-1-2019>

**Figure 2 — Test mass B****4.3 Small parts cylinder**

Small parts cylinder for the assessment of small components, having dimensions in accordance with Figure 3.

Dimension in millimetres

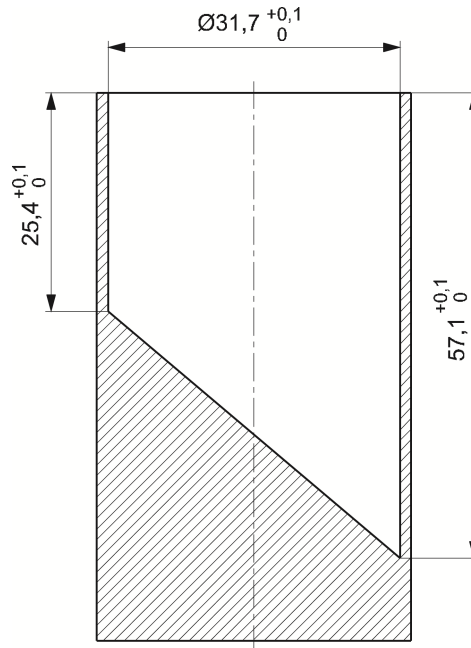


Figure 3 — Small parts cylinder

iTeh STANDARD PREVIEW  
(standards.iteh.ai)

#### 4.4 Feeler gauge

Gauge with a thickness of  $(0,4 \pm 0,02)$  mm and an insertion edge radius of  $(3 \pm 0,5)$  mm (see Figure 4).

oSIST prEN 12790-1:2019

<https://standards.iteh.ai/catalog/standards/sist/c9d55033-fb93-450f-a8db-6371c818ad32/osist-pren-12790-1-2019>

Dimensions in millimetres

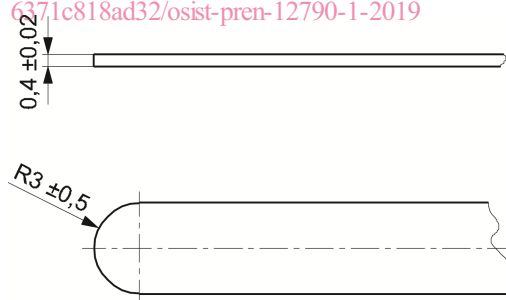


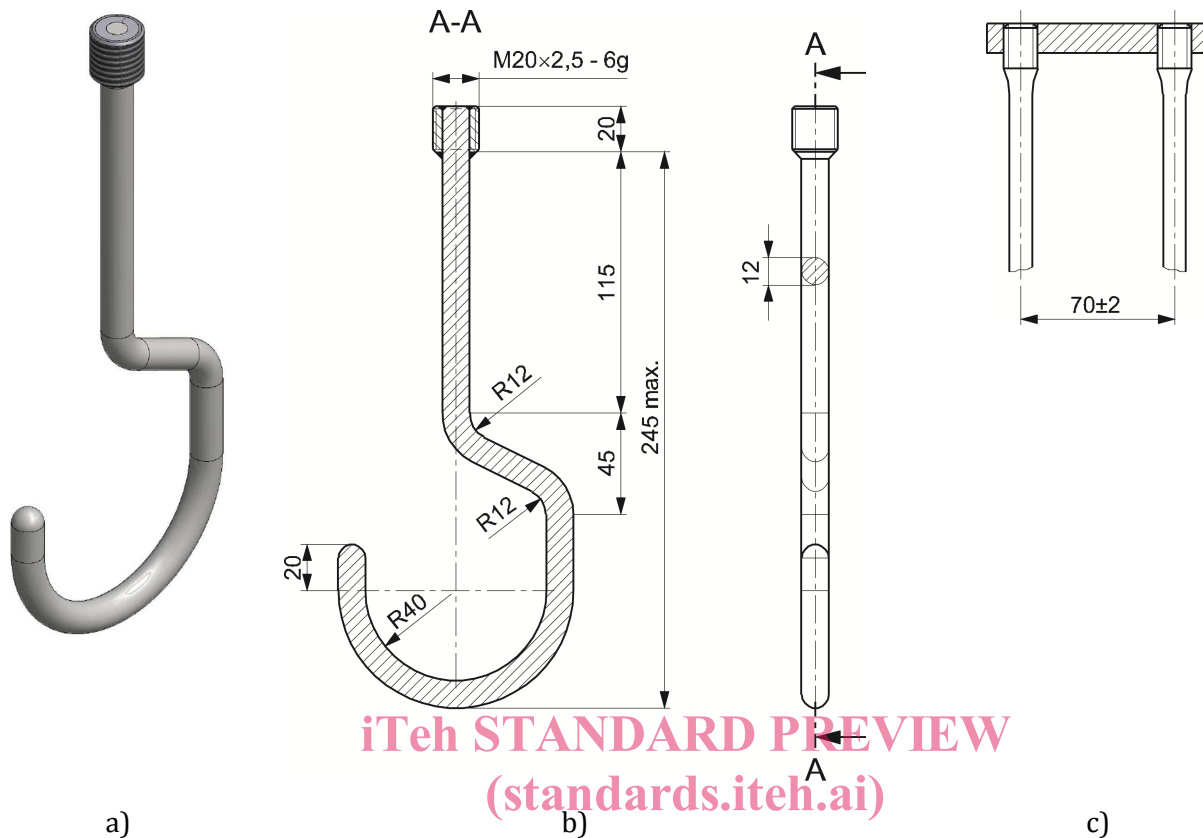
Figure 4 — Feeler gauge

#### 4.5 Test equipment for handle strength test

Hooks rigidly connected to a metal plate (see Figure 5).

The distance between the central axis of two hooks shall be  $(70 \pm 2)$  mm (see Figure 6).

Dimensions in millimetres



iTeh STANDARD PREVIEW  
(standards.iteh.ai)

**Key**

tolerance of dimension:  $\pm 2$  except for the 12 mm diameter.  
<https://standards.iteh.ai/catalog/standards/sist/c9d55033-fb93-450f-a8db-6371c818ad52/osist-pren-12790-1-2019>

**Figure 5 — Metal hooks**

Rubber adaptor with a Hardness of  $(70 \pm 5)$  Shore A and a thickness:  $10 \text{ mm} \pm 1 \text{ mm}$  as in Figure 6.

Dimensions in millimetres

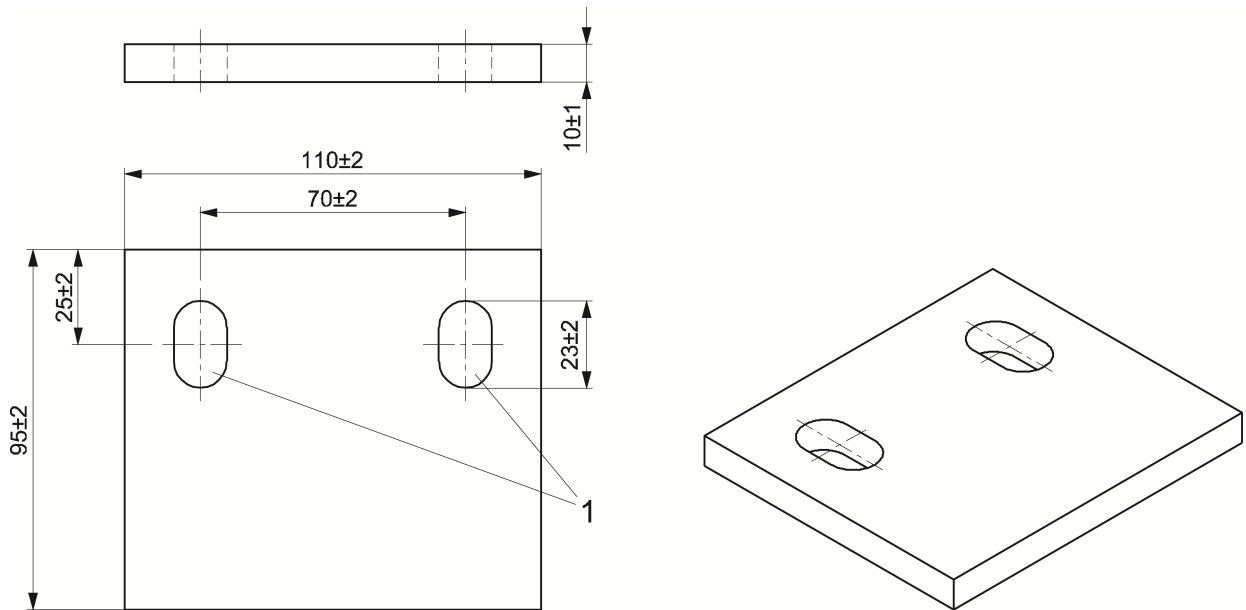
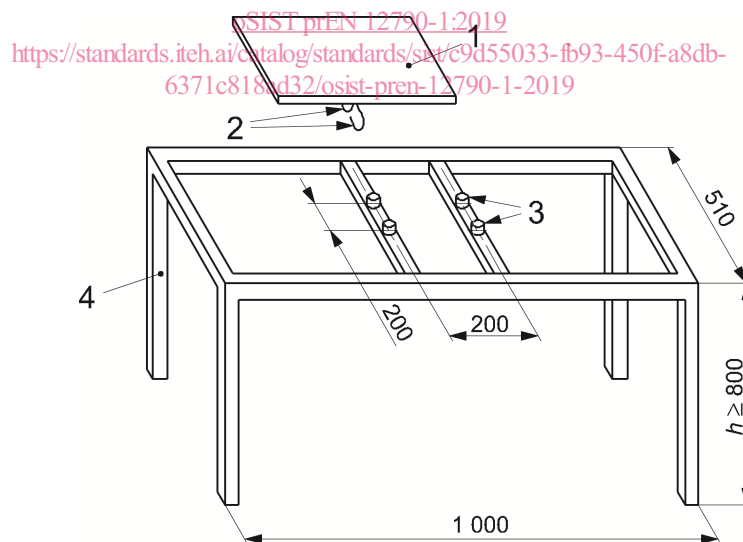


Figure 6 — Rubber adaptor

Four stops of 15 mm high, 30 mm diameter and of hardness  $(70 \pm 5)$  Shore A according to ISO 7619-1, which are screwed on the rigid frame.

(standards.iteh.ai)

Dimensions in millimetres

**Key**

- 1 metal plate:  $[(300 \pm 5) \times (300 \pm 5)]$  mm and thickness 6 mm
- 2 metal hooks (see Figure 5) rigidly fixed to the metal plate
- 3 stops
- 4 frame made of steel square tube:  $[(30 \pm 5) \times (30 \pm 5)]$  mm and thickness 1,5 mm

Figure 7 — Apparatus for dynamic strength test