



SLOVENSKI STANDARD

SIST EN 13141-8:2022

01-november-2022

Nadomešča:
SIST EN 13141-8:2014

Prezračevanje stavb - Preskušanje lastnosti sestavnih delov/izdelkov za prezračevanje stanovanjskih stavb - 8. del: Preskušanje lastnosti mehanskih brezkanalnih dovodnih in odvodnih prezračevalnih enot (vključno z enotami za vračanje toplote)

Ventilation for buildings - Performance testing of components/products for residential ventilation - Part 8: Performance testing of non-ducted mechanical supply and exhaust ventilation units (including heat recovery)

Lüftung von Gebäuden - Leistungsprüfung von Bauteilen/Produkten für die Lüftung von Wohnungen - Teil 8: Leistungsprüfung von mechanischen Zuluft- und Ablufteinheiten ohne Luftführung (einschließlich Wärmerückgewinnung)

Ventilation des bâtiments - Essais de performance des composants/produits pour la ventilation des logements - Partie 8 : Essais de performance des unités de ventilation double flux décentralisées (y compris la récupération de chaleur)

Ta slovenski standard je istoveten z: EN 13141-8:2022

ICS:

91.140.30	Prezračevalni in klimatski sistemi	Ventilation and air-conditioning systems
-----------	------------------------------------	--

SIST EN 13141-8:2022

en,fr,de

EUROPEAN STANDARD
NORME EUROPÉENNE
EUROPÄISCHE NORM

EN 13141-8

September 2022

ICS 91.140.30

Supersedes EN 13141-8:2014

English Version

**Ventilation for buildings - Performance testing of
components/products for residential ventilation - Part 8:
Performance testing of non-ducted mechanical supply and
exhaust ventilation units (including heat recovery)**

Ventilation des bâtiments - Essais de performance des
composants/produits pour la ventilation des
logements - Partie 8 : Essais de performance des unités
de ventilation double flux décentralisées (y compris la
récupération de chaleur)

Lüftung von Gebäuden - Leistungsprüfungen von
Bauteilen/Produkten für die Lüftung von Wohnungen -
Teil 8: Leistungsprüfung von mechanischen Zuluft- und
Ablufteinheiten ohne Luftführung (einschließlich
Wärmerückgewinnung)

This European Standard was approved by CEN on 10 January 2022.

CEN members are bound to comply with the CEN/CENELEC Internal Regulations which stipulate the conditions for giving this European Standard the status of a national standard without any alteration. Up-to-date lists and bibliographical references concerning such national standards may be obtained on application to the CEN-CENELEC Management Centre or to any CEN member.

This European Standard exists in three official versions (English, French, German). A version in any other language made by translation under the responsibility of a CEN member into its own language and notified to the CEN-CENELEC Management Centre has the same status as the official versions.

CEN members are the national standards bodies of Austria, Belgium, Bulgaria, Croatia, Cyprus, Czech Republic, Denmark, Estonia, Finland, France, Germany, Greece, Hungary, Iceland, Ireland, Italy, Latvia, Lithuania, Luxembourg, Malta, Netherlands, Norway, Poland, Portugal, Republic of North Macedonia, Romania, Serbia, Slovakia, Slovenia, Spain, Sweden, Switzerland, Türkiye and United Kingdom.



EUROPEAN COMMITTEE FOR STANDARDIZATION
COMITÉ EUROPÉEN DE NORMALISATION
EUROPÄISCHES KOMITEE FÜR NORMUNG

CEN-CENELEC Management Centre: Rue de la Science 23, B-1040 Brussels

Contents

Page

European foreword.....	4
Introduction	6
1 Scope	8
2 Normative references	9
3 Terms and definitions	9
4 Symbols and abbreviations	14
5 Categories of heat exchangers.....	18
6 Requirements	19
7 Test methods	20
7.1 General.....	20
7.2 Performance testing of aerodynamic characteristics.....	20
7.2.1 Leakages, mixing and air transfer.....	20
7.2.2 In/out airtightness	23
7.2.3 Filter bypass.....	23
7.2.4 Air flow.....	23
7.2.5 Electrical power input.....	26
7.3 Performance testing of thermal characteristics.....	27
7.3.1 General.....	27
7.3.2 Test operating conditions	27
7.3.3 Temperature conditions.....	28
7.3.4 Test procedure	29
7.3.5 Evaluation on supply air side (mandatory measurement) excluding alternating ventilation units	30
7.3.6 Evaluation on exhaust air side (optional measurement) excluding alternating ventilation units	31
7.4 Deviating aspects concerning alternating ventilation units	31
7.4.1 General.....	31
7.4.2 Internal leakage - Exhaust air transfer ratio.....	31
7.4.3 Determination of air volume flow.....	32
7.4.4 Electrical power input.....	36
7.4.5 Performance testing of thermal characteristics	36
8 Classification.....	42
8.1 Leakage classification.....	42
8.2 Air flow sensitivity classification.....	43
8.3 Indoor/outdoor airtightness of the complete unit	44
9 Performance testing of acoustic characteristics.....	44
9.1 General.....	44
9.2 Radiative sound power in the indoor or outdoor space	44
9.2.1 General.....	44
9.2.2 Reverberant room method	45
9.2.3 Anechoic or semi-anechoic room method.....	45
9.2.4 Free field method	45
9.3 Airborne sound insulation.....	46

10	Test results.....	47
10.1	Test report	47
10.2	Product specifications.....	47
10.3	Additional information related to the performance of the product	47
10.4	Leakages.....	47
10.5	Filter bypass	48
10.6	Air flow	49
10.7	Effective power input	49
10.8	Temperature and humidity ratios.....	50
10.9	Acoustic characteristics	50
Annex A (normative)	Test layouts	52
Annex B (normative)	Pressure leakage test method	55
B.1	General	55
B.2	External leakage test	55
B.3	Internal leakage test.....	56
Annex C (normative)	Indoor mixing	57
C.1	General	57
C.2	Determination of indoor mixing - First test.....	57
C.3	Determination of indoor mixing - Second test.....	57
C.4	Indoor mixing calculation	57
Bibliography		58

SIST EN 13141-8:2022

<https://standards.iteh.ai/catalog/standards/sist/f6b74154-b6c4-4db6-b703-df87b4d892b0/sist-en-13141-8-2022>

EN 13141-8:2022 (E)**European foreword**

This document (EN 13141-8:2022) has been prepared by Technical Committee CEN/TC 156 “Ventilation for buildings”, the secretariat of which is held by BSI.

This European Standard shall be given the status of a national standard, either by publication of an identical text or by endorsement, at the latest by March 2023, and conflicting national standards shall be withdrawn at the latest by March 2023.

Attention is drawn to the possibility that some of the elements of this document may be the subject of patent rights. CEN shall not be held responsible for identifying any or all such patent rights.

This document supersedes EN 13141-8:2014.

In addition to a number of editorial revisions, the following main changes have been made with respect to EN 13141-8:2014:

- scope has been changed, and concerns now also non-ducted units which ventilate more than one single room;
- terms and definitions as well as symbols and abbreviations have been updated in accordance with the parameters used in the document;
- new categories of heat exchanger have been added;
- designations in 7.2.1.4 and the Formulae (1) to (4) have been changed;
- reference of the internal and external leakage rates has been changes to the reference air volume flow;
- extrapolation of the leakage rates has been added;
- 7.2.1.3.2 concerning exhaust air transfer ratio has been added;
- 7.2.4 concerning air flow measurement has been revised;
- requirements to convert the measured values to standard conditions have been added in 7.2.4 and 7.3.2;
- 7.3.3 has been divided into two separate subclauses 7.3.3.1 for standard tests and 7.3.3.2 for cold climate tests;
- formulae to calculate the temperature ratios have been changed;
- wet bulb temperature for the cold climate test has been changed;
- the order of the specific test for alternating units including storage heat exchanges has been changed;
- deviating aspects for alternating units to determine the air flow correction, thermal performance and the exhaust air transfer ratio have been revised;
- Table 10 concerning the temperature conditions for the cooling performance test has been moved in EN 13142.

A list of all parts in the EN 13141 series, published under the general title *Ventilation for buildings — Performance testing of components/products for residential ventilation* can be found on the CEN website.

Any feedback and questions on this document should be directed to the users' national standards body. A complete listing of these bodies can be found on the CEN website.

According to the CEN-CENELEC Internal Regulations, the national standards organisations of the following countries are bound to implement this European Standard: Austria, Belgium, Bulgaria, Croatia, Cyprus, Czech Republic, Denmark, Estonia, Finland, France, Germany, Greece, Hungary, Iceland, Ireland, Italy, Latvia, Lithuania, Luxembourg, Malta, Netherlands, Norway, Poland, Portugal, Republic of North Macedonia, Romania, Serbia, Slovakia, Slovenia, Spain, Sweden, Switzerland, Türkiye and the United Kingdom.

iTeh STANDARD PREVIEW
(standards.iteh.ai)

SIST EN 13141-8:2022

<https://standards.iteh.ai/catalog/standards/sist/f6b74154-b6c4-4db6-b703-df87b4d892b0/sist-en-13141-8-2022>

EN 13141-8:2022 (E)**Introduction**

This document specifies methods for the performance testing of components used in residential ventilation systems to establish the performance characteristics as identified in EN 13142.

This document incorporates many references to other European and International Standards, especially on characteristics other than the aerodynamic characteristics, for instance on acoustic characteristics.

In most cases some additional tests or some additional conditions are given for the specific use in residential ventilation systems.

This document can be used for the following applications:

- laboratory testing;
- attestation purposes.

The position of this document in the field of standards for the mechanical building services is shown in Figure 1.

iTeh STANDARD PREVIEW
(standards.iteh.ai)

SIST EN 13141-8:2022

<https://standards.iteh.ai/catalog/standards/sist/f6b74154-b6c4-4db6-b703-df87b4d892b0/sist-en-13141-8-2022>

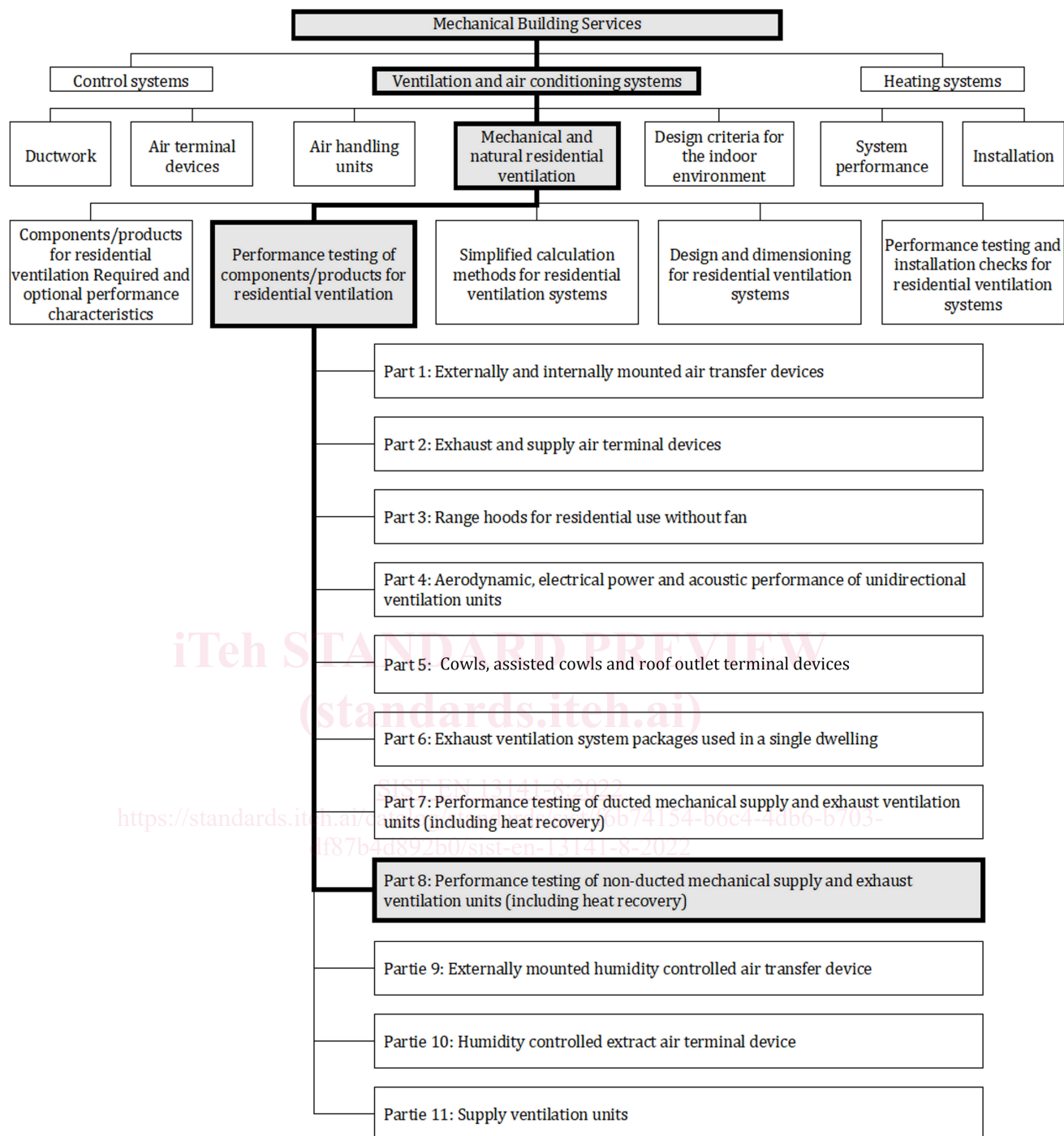


Figure 1 — Position of EN 13141-8 in the field of the mechanical building services

EN 13141-8:2022 (E)**1 Scope**

This document specifies the laboratory test methods and test requirements for the testing of aerodynamic, thermal, acoustic and the electrical performance characteristics of non-ducted mechanical supply and exhaust residential ventilation units used in single dwellings.

The purpose of this document is not to consider the quality of ventilation but to test the performance of the equipment.

This document is applicable to ventilation units, the latter:

- a) containing either:
 - fans for mechanical supply and exhaust;
 - air filters;
 - air-to-air heat exchanger for heat and possibly humidity recovery;
 - control system;
 - inlet and outlet grilles; or
 - alternating heat exchangers which provide separate supply and exhaust air flows;
- b) provided either:
 - in one assembly; or
 - in more than one assembly, the separate assemblies of which are designed to be used together.

This document does not deal with ducted units which are covered by EN 13141-7 or units with heat pumps.

Safety requirements are given in EN 60335-2-40 and EN 60335-2-80.

2 Normative references

The following documents are referred to in the text in such a way that some or all of their content constitutes requirements of this document. For dated references, only the edition cited applies. For undated references, the latest edition of the referenced document (including any amendments) applies.

EN 12792:2003, *Ventilation for buildings - Symbols, terminology and graphical symbols*

EN ISO 717-1, *Acoustics - Rating of sound insulation in buildings and of building elements — Part 1: Airborne sound insulation (ISO 717-1)*

EN ISO 5801, *Fans - Performance testing using standardized airways (ISO 5801)*

EN ISO 10140-1, *Acoustics - Laboratory measurement of sound insulation of building elements — Part 1: Application rules for specific products (ISO 10140-1)*

EN ISO 10140-2, *Acoustics - Laboratory measurement of sound insulation of building elements — Part 2: Measurement of airborne sound insulation (ISO 10140-2)*

EN ISO 10140-4, *Acoustics - Laboratory measurement of sound insulation of building elements — Part 4: Measurement procedures and requirements (ISO 10140-4)*

EN ISO 10140-5, *Acoustics - Laboratory measurement of sound insulation of building elements — Part 5: Requirements for test facilities and equipment (ISO 10140-5)*

EN ISO 16890 (all parts), *Air filters for general ventilation (ISO 16890 (all parts))*

ISO 13347-2, *Industrial fans - Determination of fan sound power levels under standardized laboratory conditions - Part 2: Reverberant room method*

ISO 13347-3, *Industrial fans - Determination of fan sound power levels under standardized laboratory conditions - Part 3: Enveloping surface methods*

ISO 13347-4, *Industrial fans - Determination of fan sound power levels under standardized laboratory conditions - Part 4: Sound intensity method*

EN ISO/IEC 17025:2017, *General requirements for the competence of testing and calibration laboratories (ISO/IEC 17025:2017)*

3 Terms and definitions

For the purposes of this document, the terms and definitions given in EN 12792:2003 and the following apply.

ISO and IEC maintain terminological databases for the use in standardization at the following addresses:

- ISO Online browsing platform: available at <https://www.iso.org/obp>
- IEC Electropedia: available at <https://www.electropedia.org/>

3.1

external leakage

q_{ve}

leakage to or from the air flowing inside the casing of the ventilation unit to or from the surrounding air

[SOURCE: EN 13141-4:2021, 3.11]

EN 13141-8:2022 (E)**3.2****internal leakage** q_{vi}

leakage inside the unit between the exhaust and the supply air flows

[SOURCE: EN 13141-7:2021, 3.2]

3.3**filter bypass leakage**

air bypass around filter cells

[SOURCE: EN 13141-7:2021, 3.4]

3.4**indoor/outdoor airtightness** q_{vio}

maximum air volume flow between the indoor and the outdoor environments at static pressure difference of -20 Pa and +20 Pa when the fans are "OFF" and all shutters are closed

Note 1 to entry: Indoor/outdoor airtightness is not the external leakage.

[SOURCE: EN 13141-4:2021, 3.13, modified – Removal of "through a non-ducted ventilation unit", "corresponding to the setting" and "additional", adding of "between the indoor and the outdoor environments"]

3.5**exhaust air transfer ratio** R_s

mass transfer of the discharged air to a zone from extract to supply that is actually recirculated air from the same zone, due to internal leakage and external casing leakage

3.6**outdoor mixing** R_{me}

mixing of the two air flows external to the equipment under test between discharge and intake ports at outdoor terminal points caused by short circuiting

3.7**indoor mixing** R_{mi}

mixing of the two air flows external to the equipment under test between discharge and intake ports at indoor terminal points caused by short circuiting

3.8**declared maximum air volume flow** $q_{vmax,d}$

declared maximum air volume flow of the unit at 0 Pa static pressure difference, between indoor and outdoor

[SOURCE: EN 13141-4:2021, 3.6, modified – "at 0 Pa static pressure difference, between indoor and outdoor" has been added]

3.9**maximum air volume flow** q_{vmax}

air volume flow corresponding to the maximum achievable fan curve setting of the unit at 0 Pa static pressure difference between indoor and outdoor, either declared or measured

Note 1 to entry: If the supply and exhaust air volume flows are different, then the maximum air volume flow is equal to the smaller of the two air volume flows.

[SOURCE: EN 13141-4:2021, 3.7, modified – Note 1 to entry has been replaced by “If the supply and exhaust air volume flows are different, then the maximum air volume flow is equal to the smaller of the two air volume flows.”]

3.10**declared minimum air volume flow** $q_{vmin,d}$

minimum air volume flow of the unit declared at 0 Pa static pressure difference between indoor and outdoor

Note 1 to entry: If the supply and exhaust air volume flows are different, then the minimum air volume flow is equal to the higher of the two air volume flows.

[SOURCE: EN 13141-7:2021, 3.8, modified – “at the reference pressure declared” has been replaced by “at 0 Pa static pressure difference between indoor and outdoor”]

3.11**reference air volume flow** q_{vref}

air volume flow at 70 % of the maximum air volume flow

Note 1 to entry: If the air volume flow at 70 % of the maximum air volume flow cannot be adjusted on the product itself, the closest value above is selected.

[SOURCE: EN 13141-4:2021, 3.8, modified – Note 1 to entry “To determine reference air volume flow, see 5.2.3.4, Table 6.” has been replaced by the one above]

3.12**unit static pressure** p_{us}

pressure increase induced by the ventilation unit given as difference between the static pressure at the unit outlet and the total pressure at the unit inlet

Note 1 to entry: The parameter p_{us} for a ventilation unit is defined as the parameter p_{fs} described in EN ISO 5801 for a stand alone fan.

[SOURCE: EN 13141-4:2021, 3.2]

EN 13141-8:2022 (E)**3.13****external static pressure difference** $p_{s,ext}$

pressure increase induced by the ventilation unit given as difference between the static pressures at the unit outlet and the unit inlet

Note 1 to entry: The external static pressure difference, $p_{s,ext}$, is used to determine the maximum air volume flow, the reference air volume flow and the minimum air volume flow.

[SOURCE: EN 13141-4:2021, 3.3, modified – “and the minimum air volume flow” has been added in Note 1 to entry]

3.14**air flow sensitivity** ν

maximum relative deviation of the maximum air volume flow q_{vmax} due to a static pressure difference of +20 Pa and – 20Pa

Note 1 to entry: Unbalanced (unequal) supply and exhaust air streams influence the thermal efficiency of the ventilation unit and its air exchange capacity.

[SOURCE: EN 13141-4:2021, 3.12, modified – “of a non-ducted ventilation unit” has been removed from the definition, Note 1 to entry has been added]

3.15**temperature ratio** η_θ

temperature difference between inlet and outlet of one of the air flows divided by the temperature difference between the inlets of both air flows

[SOURCE: EN 13141-7:2021, 3.15]

3.16**humidity ratio** η_x

difference of vapour mixing ratio between inlet and outlet of one of the air flows divided by the difference of vapour mixing ratio between the inlets of both air flows

[SOURCE: EN 13141-7:2021, 3.16]

3.17**electrical power input** P_E

average overall electrical power input to the equipment within a defined interval of time for standard air conditions obtained from:

- the power input of the fans;
- controller(s), compressor(s), safety devices of the equipment(s) excluding additional electrical heating devices not used for defrosting

Note 1 to entry: Electrical power consumption includes the consumption of the heating device for defrosting during the cold climate test.

[SOURCE: EN 13141-4:2021, 3.15, modified – Note 1 to entry has been added]

3.18**maximum electrical power input** $P_{E,max}$

electrical power input at maximum air volume flow, q_{vmax}

[SOURCE: EN 13141-4:2021, 3.17, modified – “, and its corresponding pressure, p_{qvmax} ” has been removed]

3.19**electrical power input at the reference air volume flow** $P_{E,ref}$

electrical power input at reference air volume flow q_{vref}

[SOURCE: EN 13141-4:2021, 3.16, modified – “, and reference pressure, p_{ref} ” has been removed]

3.20**supply air transfer ratio** R_e

mass fraction of the discharged air to a zone from outdoor to exhaust that is actually recirculated air from the same zone, due to internal leakage, external casing leakage and short circuiting

3.21**alternating ventilation unit**

pair of mechanical ventilation devices using storage heat exchangers operating in opposite, synchronized periodically changing air flow direction incorporated in common or two separate casing(s)

3.22**alternating mode**

operating mode in which a ventilation unit periodically changes from exhausting air to supplying air and vice versa