
Plovila za celinske vode - Oporni drogovi in držala za nagibne in odstranljive palubne ograje

Inland navigation vessels - Stanchions and holders for tiltable and detachable railings

Fahrzeuge der Binnenschifffahrt - Stützen und Halter für umlegbare und losnehmbare Geländer

Bateaux de navigation intérieure - Chandeliers et supports pour garde-corps rabattables et démontables

iTeh STANDARD PREVIEW
(standards.itteh.ai)[SIST EN 17360:2020](https://standards.itteh.ai/catalog/standards/sist/en-17360-2020)**Ta slovenski standard je istoveten z: EN 17360:2020**<https://standards.itteh.ai/catalog/standards/sist/en-17360-2020>
<https://standards.itteh.ai/catalog/standards/sist/en-17360-2020>**ICS:**

47.020.10	Ladijski trupi in njihovi konstrukcijski elementi	Hulls and their structure elements
47.060	Jezerska in rečna plovila	Inland navigation vessels

SIST EN 17360:2020**en,fr,de**

iTeh STANDARD PREVIEW
(standards.iteh.ai)

[SIST EN 17360:2020](#)

<https://standards.iteh.ai/catalog/standards/sist/0bb44be5-8676-409d-a4f8-d78ca248b67d/sist-en-17360-2020>

EUROPEAN STANDARD

EN 17360

NORME EUROPÉENNE

EUROPÄISCHE NORM

February 2020

ICS 47.020.10; 47.060

English Version

Inland navigation vessels - Stanchions and holders for tiltable and detachable railings

Bateaux de navigation intérieure - Chandeliers et
support pour garde-corps rabattables et démontables

Fahrzeuge der Binnenschifffahrt - Stützen und Halter
für umlegbare und losnehmbare Geländer

This European Standard was approved by CEN on 13 January 2020.

CEN members are bound to comply with the CEN/CENELEC Internal Regulations which stipulate the conditions for giving this European Standard the status of a national standard without any alteration. Up-to-date lists and bibliographical references concerning such national standards may be obtained on application to the CEN-CENELEC Management Centre or to any CEN member.

This European Standard exists in three official versions (English, French, German). A version in any other language made by translation under the responsibility of a CEN member into its own language and notified to the CEN-CENELEC Management Centre has the same status as the official versions.

CEN members are the national standards bodies of Austria, Belgium, Bulgaria, Croatia, Cyprus, Czech Republic, Denmark, Estonia, Finland, France, Germany, Greece, Hungary, Iceland, Ireland, Italy, Latvia, Lithuania, Luxembourg, Malta, Netherlands, Norway, Poland, Portugal, Republic of North Macedonia, Romania, Serbia, Slovakia, Slovenia, Spain, Sweden, Switzerland, Turkey and United Kingdom.

<https://standards.iteh.ai/catalog/standards/sist/0bb44be5-8676-409d-a4f8-d78ca248b67d/sist-en-17360-2020>



EUROPEAN COMMITTEE FOR STANDARDIZATION
COMITÉ EUROPÉEN DE NORMALISATION
EUROPÄISCHES KOMITEE FÜR NORMUNG

CEN-CENELEC Management Centre: Rue de la Science 23, B-1040 Brussels

Contents

	Page
European foreword.....	3
1 Scope.....	4
2 Normative references.....	4
3 Terms and definitions	5
4 Requirements.....	6
4.1 General.....	6
4.2 Stanchion and holders for tiltable railings (CT)	6
4.2.1 Assembly	6
4.2.2 Parts list.....	8
4.2.3 Parts	8
4.3 Stanchion and holders for detachable railings (CD)	9
4.3.1 Assembly	9
4.3.2 Parts list.....	10
4.3.3 Parts.....	11
5 Designation.....	12
5.1 Tiltable railing.....	12
5.2 Detachable railing.....	12
Annex A (informative) Installation instructions for tiltable railings	13
Bibliography.....	14

[SIST EN 17360:2020](https://standards.iteh.ai/catalog/standards/sist/0bb44be5-8676-409d-a4f8-d78ca248b67d/sist-en-17360-2020)
<https://standards.iteh.ai/catalog/standards/sist/0bb44be5-8676-409d-a4f8-d78ca248b67d/sist-en-17360-2020>

European foreword

This document (EN 17360:2020) has been prepared by Technical Committee CEN/TC 15 “Inland navigation vessels”, the secretariat of which is held by DIN.

This European Standard shall be given the status of a national standard, either by publication of an identical text or by endorsement, at the latest by August 2020, and conflicting national standards shall be withdrawn at the latest by August 2020.

Attention is drawn to the possibility that some of the elements of this document may be the subject of patent rights. CEN shall not be held responsible for identifying any or all such patent rights.

According to the CEN-CENELEC Internal Regulations, the national standards organisations of the following countries are bound to implement this European Standard: Austria, Belgium, Bulgaria, Croatia, Cyprus, Czech Republic, Denmark, Estonia, Finland, France, Germany, Greece, Hungary, Iceland, Ireland, Italy, Latvia, Lithuania, Luxembourg, Malta, Netherlands, Norway, Poland, Portugal, Republic of North Macedonia, Romania, Serbia, Slovakia, Slovenia, Spain, Sweden, Switzerland, Turkey and the United Kingdom.

iTeh STANDARD PREVIEW (standards.iteh.ai)

[SIST EN 17360:2020](https://standards.iteh.ai/catalog/standards/sist/0bb44be5-8676-409d-a4f8-d78ca248b67d/sist-en-17360-2020)

<https://standards.iteh.ai/catalog/standards/sist/0bb44be5-8676-409d-a4f8-d78ca248b67d/sist-en-17360-2020>

EN 17360:2020 (E)**1 Scope**

This document is applicable to stanchions and holders of tiltable and detachable railings (railing type CT and CD according to EN 711 in work areas) for inland navigation vessels. These railings are situated in the side deck areas, where a permanently fitted railing can be an obstacle for loading/discharging operations.

The stanchions are designed for use with handrails and intermediate guardrails made of wire ropes.

2 Normative references

The following documents are referred to in the text in such a way that some or all of their content constitutes requirements of this document. For dated references, only the edition cited applies. For undated references, the latest edition of the referenced document (including any amendments) applies.

EN 711, *Inland navigation vessels — Railings for decks and side decks — Requirements, designs and types*

EN 1123-3, *Pipes and fittings of longitudinally welded hot-dip galvanized steel pipes with spigot and socket for waste water systems — Part 3: Dimensions and special requirements for vacuum drainage systems and for drainage systems in ship-building*

EN 10025-1, *Hot rolled products of structural steels — Part 1: General technical delivery conditions*

EN 10058, *Hot rolled flat steel bars and steel wide flats for general purposes — Dimensions and tolerances on shape and dimensions*

EN 10217-7, *Welded steel tubes for pressure purposes — Technical delivery conditions — Part 7: Stainless steel tubes*

EN 10255, *Non-Alloy steel tubes suitable for welding and threading — Technical delivery conditions*

EN 12163, *Copper and copper alloys — Rod for general purposes*

EN 12164, *Copper and copper alloys — Rod for free machining purposes*

EN 13601, *Copper and copper alloys — Copper rod, bar and wire for general electrical purposes*

EN 22768-1, *General tolerances — Part 1: Tolerances for linear and angular dimensions without individual tolerance indications (ISO 2768-1)*

EN ISO 4014, *Hexagon head bolts — Product grades A and B (ISO 4014)*

EN ISO 4032, *Hexagon regular nuts (style 1) — Product grades A and B (ISO 4032)*

ISO 262, *ISO general purpose metric screw threads — Selected sizes for screws, bolts and nuts*

3 Terms and definitions

For the purposes of this document, the following terms and definitions apply.

ISO and IEC maintain terminological databases for use in standardization at the following addresses:

- IEC Electropedia: available at <http://www.electropedia.org/>
- ISO Online browsing platform: available at <https://www.iso.org/obp>

3.1

stanchion

<inland navigation> part of the railing designed to support handrail and intermediate guardrail

3.2

holder

<inland navigation> part of the railing used to attach the stanchion to the deck

3.2.1

flat bar holder

<inland navigation> holder for a tiltable railing

3.2.2

socket

<inland navigation> holder for a detachable railing

3.3

tiltable railing

foldable railing

CT

Commercial Tilttable

railing which can be tilted by releasing the handrail and intermediate guardrail

iTech STANDARD PREVIEW
(standards.iteh.ai)
[SIST EN 17360:2020
https://standards.iteh.ai/catalog/standards/sist/0bb44be5-8676-409d-a4f8-d78ca248b67d/sist-en-17360-2020](https://standards.iteh.ai/catalog/standards/sist/0bb44be5-8676-409d-a4f8-d78ca248b67d/sist-en-17360-2020)

3.4

detachable railing

plug-in railing

CD

Commercial Detachable

railing which can be detached when the handrail and intermediate guardrail is released

EN 17360:2020 (E)**4 Requirements****4.1 General**

General tolerances: ISO 2768 – c (see EN 22768-1).

Details not specified shall be selected appropriately.

Dimensions marked with a ● are safety dimensions and correspond to the stipulations in EN 711.

Dimensions *s* for wall thickness of posts (Pos. No. 1 and Pos. No. 7) and Sleeve (Pos. No. 8):

- 2,5 mm for stainless steel according to EN 10217-7;
- 2,6 mm for galvanized steel according to EN 1123-3;
- 3,2 mm for black steel according to EN 10255.

Sharp edges removed.

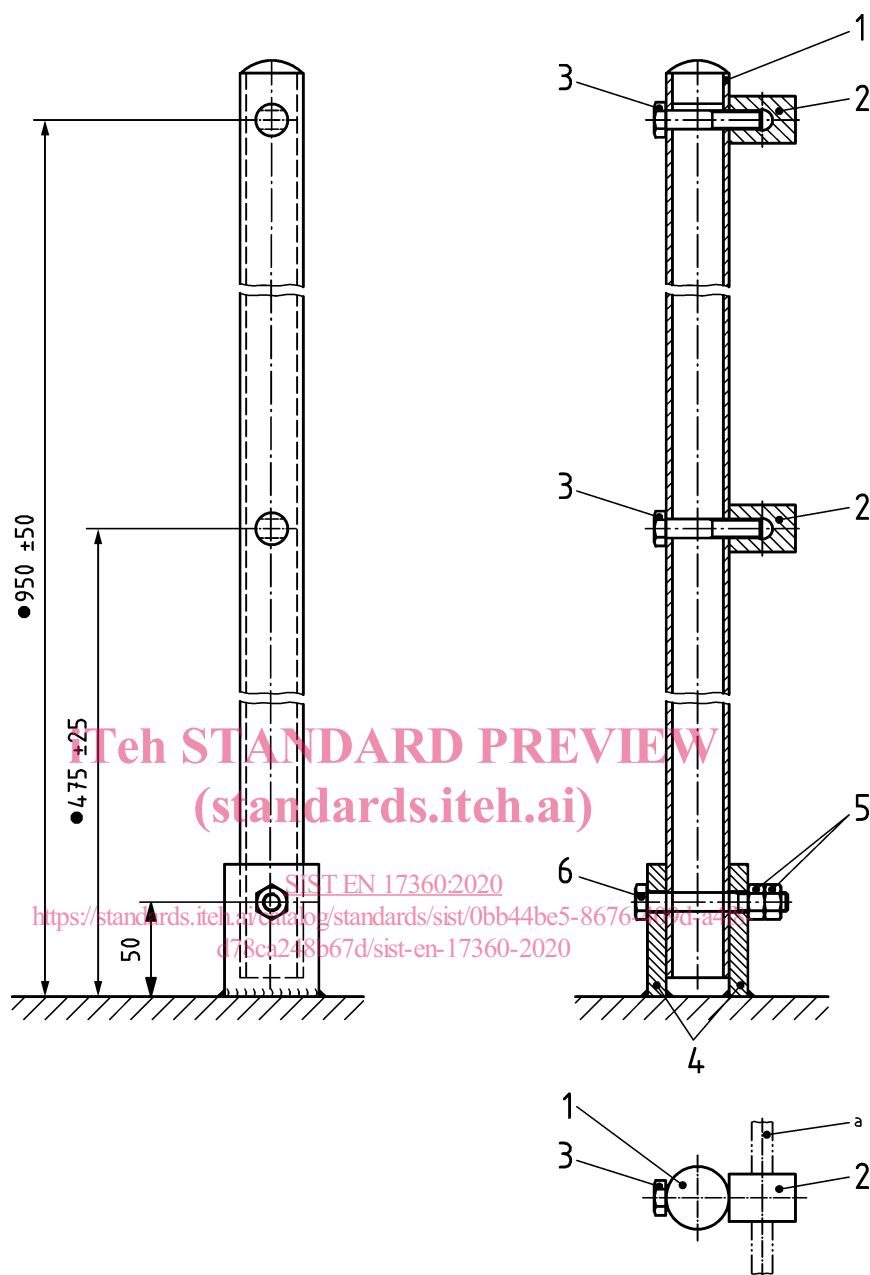
4.2 Stanchion and holders for tiltable railings (CT)**4.2.1 Assembly**

The stanchion consists of stanchion post, twist on connection clamps and flat bar holder. The upper end of the stanchion post shall be enclosed (welded shut and smoothed or closed with a cup or plug). The flat bar holder shall be designed for welding onto the deck.

Figure 1 illustrates a stanchion for tiltable railings (CT) suitable for wire ropes for handrail and intermediate guardrail with a diameter of 8 mm to 10 mm, with stanchion tube end enclosed by a plug. For installation instructions for tiltable railings, see Annex A.

<https://standards.iteh.ai/catalog/standards/sist/0bb44be5-8676-409d-a4f8-d78ca248b67d/sist-en-17360-2020>

Dimensions in millimetres

**Key**

a	wire rope
Pos. No.	see parts list Table 1

Figure 1 — Assembly of stanchion and flat bar holder for tiltable railings