

DRAFT INTERNATIONAL STANDARD

ISO/DIS 10140-1

ISO/TC 43/SC 2

Secretariat: DIN

Voting begins on:
2014-12-04

Voting terminates on:
2015-05-04

Acoustics — Laboratory measurement of sound insulation of building elements —

Part 1: Application rules for specific products

*Acoustique — Mesurage en laboratoire de l'isolation acoustique des éléments de construction —
Partie 1: Règles d'application pour produits particuliers*

ICS: 91.120.20

iTeh STANDARD PREVIEW
(standards.iteh.ai)
Full standard:
<https://standards.iteh.ai/catalog/standards/sist/2dd8bcd2-e90f-4f92-8993-a5e0235c2ca1/iso-10140-1-2016>

ISO/CEN PARALLEL PROCESSING

This draft has been developed within the International Organization for Standardization (ISO), and processed under the **ISO lead** mode of collaboration as defined in the Vienna Agreement.

This draft is hereby submitted to the ISO member bodies and to the CEN member bodies for a parallel five month enquiry.

Should this draft be accepted, a final draft, established on the basis of comments received, will be submitted to a parallel two-month approval vote in ISO and formal vote in CEN.

To expedite distribution, this document is circulated as received from the committee secretariat. ISO Central Secretariat work of editing and text composition will be undertaken at publication stage.

THIS DOCUMENT IS A DRAFT CIRCULATED FOR COMMENT AND APPROVAL. IT IS THEREFORE SUBJECT TO CHANGE AND MAY NOT BE REFERRED TO AS AN INTERNATIONAL STANDARD UNTIL PUBLISHED AS SUCH.

IN ADDITION TO THEIR EVALUATION AS BEING ACCEPTABLE FOR INDUSTRIAL, TECHNOLOGICAL, COMMERCIAL AND USER PURPOSES, DRAFT INTERNATIONAL STANDARDS MAY ON OCCASION HAVE TO BE CONSIDERED IN THE LIGHT OF THEIR POTENTIAL TO BECOME STANDARDS TO WHICH REFERENCE MAY BE MADE IN NATIONAL REGULATIONS.

RECIPIENTS OF THIS DRAFT ARE INVITED TO SUBMIT, WITH THEIR COMMENTS, NOTIFICATION OF ANY RELEVANT PATENT RIGHTS OF WHICH THEY ARE AWARE AND TO PROVIDE SUPPORTING DOCUMENTATION.



Reference number
ISO/DIS 10140-1:2014(E)

© ISO 2014

iTeh STANDARD PREVIEW
(standards.iteh.ai)
Full standard:
<https://standards.iteh.ai/catalog/standards/sist/2dd8bcd2-e90f-4f92-8993-a5e0235c2ca1/iso-10140-1-2016>

Copyright notice

This ISO document is a Draft International Standard and is copyright-protected by ISO. Except as permitted under the applicable laws of the user's country, neither this ISO draft nor any extract from it may be reproduced, stored in a retrieval system or transmitted in any form or by any means, electronic, photocopying, recording or otherwise, without prior written permission being secured.

Requests for permission to reproduce should be addressed to either ISO at the address below or ISO's member body in the country of the requester.

ISO copyright office
Case postale 56 • CH-1211 Geneva 20
Tel. + 41 22 749 01 11
Fax + 41 22 749 09 47
E-mail copyright@iso.org
Web www.iso.org

Reproduction may be subject to royalty payments or a licensing agreement.

Violators may be prosecuted.

Contents

Page

Foreword	vi
Introduction.....	vii
1 Scope	1
2 Normative references	1
3 General	1
4 Structure of application rules for specific products.....	2
Annex A (normative) Walls — Airborne sound insulation	3
A.1 Application	3
A.2 Test element.....	3
A.3 Boundary and mounting conditions.....	3
A.4 Test and operating conditions	4
A.5 Test report.....	4
Annex B (normative) Doors — Airborne sound insulation	5
B.1 Application	5
B.2 Test element.....	5
B.3 Boundary and mounting conditions.....	5
B.4 Test and operating conditions	5
B.5 Test report.....	5
Annex C (normative) Windows — Airborne sound insulation	6
C.1 Application	6
C.2 Test element.....	6
C.3 Boundary and mounting conditions.....	6
C.4 Test and operating conditions	6
C.4.1 Conditioning	6
C.4.2 Operation.....	7
C.5 Test report.....	7
Annex D (normative) Glazing — Airborne sound insulation.....	8
D.1 Application	8
D.2 Test element.....	8
D.3 Boundary and mounting conditions.....	8
D.4 Test methods	9
D.4.1 General	9
D.4.2 Reference curves.....	10
D.5 Test report.....	14
Annex E (normative) Small technical elements — Airborne sound insulation.....	15
E.1 Application	15
E.2 Test element.....	15
E.2.1 General	15
E.2.2 Number of positions.....	15
E.2.3 Local increase of wall thickness.....	16
E.2.4 Local decrease of wall thickness.....	16
E.2.5 Central, corner and edge positions	16
E.3 Boundary and mounting conditions.....	17
E.3.1 Transfer air devices.....	17
E.3.2 Electrical raceways	18
E.4 Test and operating conditions	18
E.5 Test report.....	18
Annex F (normative) Floors — Airborne and impact sound insulation.....	19

F.1	Application	19
F.2	Test element	19
F.3	Boundary and mounting conditions	19
F.4	Test and operating conditions	19
F.5	Test report	19
Annex G	(normative) Acoustical linings — Improvement of airborne sound insulation	20
G.1	Application	20
G.2	Test element	20
G.3	Boundary and mounting conditions	21
G.4	Test and operating conditions	21
G.5	Test report	21
G.6	Additional information	22
G.6.1	Single-number rating for improvement of sound reduction index by linings	22
Annex H	(normative) Floor coverings — Improvement of impact sound insulation	24
H.1	Application	24
H.2	Test element	24
H.2.1	General	24
H.2.2	Classification of floor coverings	25
H.3	Boundary and mounting conditions	25
H.4	Test and operating conditions	25
H.4.1	Load	25
H.4.2	Installation	26
H.4.3	Adhesive mounting	26
H.4.4	Curing	26
H.4.5	Environmental conditions	26
H.4.6	Position of the tapping machine	26
H.5	Test report	29
H.6	Additional information	29
H.6.1	Improvement with heavy/soft impact	29
H.6.2	Procedures using a wooden mock-up floor to determine the impact sound improvement of floor coverings when mounted on lightweight floor constructions	30
H.6.3	Expression of results	30
Annex I	(normative) Shutters — Airborne sound insulation	32
I.1	Application	32
I.2	Test element	32
I.3	Boundary and mounting conditions	32
I.4	Test and operating conditions	34
I.4.1	Conditioning	34
I.4.2	Operation	34
I.5	Test report	34
Annex J	(normative) Joints filled with fillers or seals — Sound reduction index	36
J.1	Application	36
J.2	Test element	37
J.2.1	General	37
J.2.2	Illustration 1 — Gaps between windows and doors	37
J.2.3	Illustration 2 — Test element for slits and gaps	40
J.3	Boundary and mounting conditions (to be applied before installation)	40
J.3.1	General	40
J.3.2	Illustration 1 — Geometry of a joint to test fillers in a cassette	40
J.3.3	Illustration 2 — Geometry of a joint to test gaskets	41
J.4	Test and operating conditions (to be applied after installation)	42
J.5	Expression of results	44
J.6	Test report	46
Annex K	(normative) Roofs, roof/ceiling systems, roof windows and skylights — Rainfall sound	47
K.1	Application	47
K.2	Test element	47
K.2.1	Standard element and laboratory configuration	47

K.2.2 Other configurations 48

K.3 Boundary and mounting conditions 48

K.4 Test and operating conditions 48

K.4.1 General 48

K.4.2 Determination of the sound intensity level (indirect method) 48

K.4.3 Direct measurement of sound intensity 50

K.5 Test report 50

K.6 Additional information — Normalization using a reference test specimen 51

Bibliography 1

iTeh STANDARD PREVIEW
 (standards.iteh.ai)
 Full standard:
<https://standards.iteh.ai/catalog/standards/sist/2dd8bcd2-e90f-4f92-8993-a5e0235c2ca1/iso-10140-1-2016>

Foreword

ISO (the International Organization for Standardization) is a worldwide federation of national standards bodies (ISO member bodies). The work of preparing International Standards is normally carried out through ISO technical committees. Each member body interested in a subject for which a technical committee has been established has the right to be represented on that committee. International organizations, governmental and non-governmental, in liaison with ISO, also take part in the work. ISO collaborates closely with the International Electrotechnical Commission (IEC) on all matters of electrotechnical standardization.

International Standards are drafted in accordance with the rules given in the ISO/IEC Directives, Part 2.

The main task of technical committees is to prepare International Standards. Draft International Standards adopted by the technical committees are circulated to the member bodies for voting. Publication as an International Standard requires approval by at least 75 % of the member bodies casting a vote.

Attention is drawn to the possibility that some of the elements of this document may be the subject of patent rights. ISO shall not be held responsible for identifying any or all such patent rights.

ISO 10140-1 was prepared by Technical Committee ISO/TC 43, *Acoustics*, Subcommittee SC 2, *Building acoustics*.

This second edition of ISO 10140-1 cancels and replaces ISO 10140-1:2010-08, ISO 10140-1:2010-08/AMD 1:2012-01 and ISO 10140-1:2010-08/AMD 2:2014-05, which have been technically revised.

ISO 10140 consists of the following parts, under the general title *Acoustics — Laboratory measurement of sound insulation of building elements*:

- *Part 1: Application rules for specific products*
- *Part 2: Measurement of airborne sound insulation*
- *Part 3: Measurement of impact sound insulation*
- *Part 4: Measurement procedures and requirements*
- *Part 5: Requirements for test facilities and equipment*

Introduction

ISO 10140 (all parts) concerns laboratory measurement of the sound insulation of building elements (see Table 1).

This part of ISO 10140 specifies the application rules for specific elements and products, including specific requirements for preparation, mounting, operating and test conditions. ISO 10140-2 and ISO 10140-3 contain the general procedures for airborne and impact sound insulation measurements, respectively, and refer to ISO 10140-4 and ISO 10140-5 where appropriate. For elements and products without a specific application rule described in this part of ISO 10140, it is possible to apply ISO 10140-2 and ISO 10140-3. ISO 10140-4 contains basic measurement techniques and processes. ISO 10140-5 contains the requirements for test facilities and equipment. For the structure of ISO 10140 (all parts), see Table 1.

ISO 10140 (all parts) was created to improve the layout for laboratory measurements, ensure consistency and simplify future changes and additions regarding mounting conditions of test elements in laboratory and field measurements. It is intended for ISO 10140 (all parts) to present a well-written and arranged format for laboratory measurements.

It is intended to update this part of ISO 10140 with application rules for other products. It is also intended to incorporate ISO 140-18 into ISO 10140 (all parts).

Annex J has been developed for joints filled with fillers or seals.

Annex K has been developed for the measurement of rainfall sound.

iTeh STANDARD PREVIEW
(standards.iteh.ai)
Full standard:
<https://standards.iteh.ai/catalog/standards/sist/2ddb60d2-e90f-4f92-8993-a5e0235c2ca1/iso-10140-1-2016>

Table 1 — Structure and contents of ISO 10140 (all parts)

Relevant part of ISO 10140	Main purpose, contents and use	Detailed content
ISO 10140-1	It indicates the appropriate test procedure for elements and products. For certain types of element/product, it can contain additional and more specific instructions about quantities and test element size and about preparation, mounting and operating conditions. Where no specific details are included, the general guidelines according to ISO 10140-2 and ISO 10140-3.	Appropriate references to ISO 10140-2 and ISO 10140-3 and product-related, specific and additional instructions on: <ul style="list-style-type: none"> — specific quantities measured; — size of test element; — boundary and mounting conditions; — conditioning, testing and operating conditions; — additional specifics for test report.
ISO 10140-2	It gives a complete procedure for airborne sound insulation measurements according to ISO 10140-4 and ISO 10140-5. For products without specific application rules, it is sufficiently complete and general for the execution of measurements. However, for products with specific application rules, measurements are carried out according to ISO 10140-1, if available.	<ul style="list-style-type: none"> — Definitions of main quantities measured — General mounting and boundary conditions — General measurement procedure — Data processing — Test report (general points)
ISO 10140-3	It gives a complete procedure for impact sound insulation measurements according to ISO 10140-4 and ISO 10140-5. For products without specific application rules, it is sufficiently complete and general for the execution of measurements. However, for products with specific application rules, measurements are carried out according to ISO 10140-1, if available.	<ul style="list-style-type: none"> — Definitions of main quantities measured — General mounting and boundary conditions — General measurement procedure — Data processing — Test report (general points)
ISO 10140-4	It gives all the basic measurement techniques and processes for measurement according to ISO 10140-2 and ISO 10140-3 or facility qualifications according to ISO 10140-5. Much of the content is implemented in software.	<ul style="list-style-type: none"> — Definitions — Frequency range — Microphone positions — SPL measurements — Averaging, space and time — Correction for background noise — Reverberation time measurements — Loss factor measurements — Low-frequency measurements — Radiated sound power by velocity measurement
ISO 10140-5	It specifies all information needed to design, construct and qualify the laboratory facility, its additional accessories and measurement equipment (hardware).	<p>Test facilities, design criteria:</p> <ul style="list-style-type: none"> — volumes, dimensions; — flanking transmission; — laboratory loss factor; — maximum achievable sound reduction index; — reverberation time; — influence of lack of diffusivity in the laboratory. <p>Test openings:</p> <ul style="list-style-type: none"> — standard openings for walls and floors; — other openings (windows, doors, small technical elements); — filler walls in general. <p>Requirements for equipment:</p> <ul style="list-style-type: none"> — loudspeakers, number, positions; — tapping machine and other impact sources; — measurement equipment. <p>Reference constructions:</p> <ul style="list-style-type: none"> — basic elements for airborne and impact insulation improvement; — corresponding reference performance curves.

Acoustics — Laboratory measurement of sound insulation of building elements — Part 1: Application rules for specific products

1 Scope

This part of ISO 10140 specifies test requirements for building elements and products, including detailed requirements for preparation, mounting, operating and test conditions, as well as applicable quantities and additional test information for reporting. The general procedures for airborne and impact sound insulation measurements are given in ISO 10140-2:2010 and ISO 10140-3, respectively.

2 Normative references

The following referenced documents are indispensable for the application of this document. For dated references, only the edition cited applies. For undated references, the latest edition of the referenced document (including any amendments) applies.

EN 572-1, *Glass in building - Basic soda lime silicate glass products-Part 1: Definitions and general physical and mechanical properties*

EN 572-2, *Glass in building - Basic soda lime silicate glass products-Part 2: Float glass*

ISO 717-1:1996, *Acoustics — Rating of sound insulation in buildings and of building elements — Part 1: Airborne sound insulation*

ISO 717-2, *Acoustics — Rating of sound insulation in buildings and of building elements — Part 2: Impact sound insulation*

ISO 10140-2, *Acoustics — Laboratory measurement of sound insulation of building elements — Part 2: Measurement of airborne sound insulation*

ISO 10140-3, *Acoustics — Laboratory measurement of sound insulation of building elements — Part 3: Measurement of impact sound insulation*

ISO 10140-5:2010, *Acoustics — Laboratory measurement of sound insulation of building elements — Part 5: Requirements for test facilities and equipments*

ISO 12999-1:2014, *Acoustics — Determination and application of measurement uncertainties in building acoustics — Part 1: Sound insulation*

3 General

General requirements regarding boundary conditions and mounting of the test element in the laboratory are specified in ISO 10140-2, ISO 10140-3 and ISO 10140-5. Additional and more detailed requirements regarding preparation, mounting and operating conditions, and conditioning are given in Annexes A, B, C, D, E, F, G, H, I, J and K.

NOTE For products which are not covered by Annexes A, B, C, D, E, F, G, H, I, J or K, a new annex can be added, based on available knowledge and practice. The preferred structure of annexes is specified in Clause 4.

When testing in accordance with ISO 10140 (all parts), this part of ISO 10140 shall always be checked for requirements relating to specific elements and products. The basic conditions specified in ISO 10140-2 or ISO 10140-3 shall always be followed.

4 Structure of application rules for specific products

To extend or update the Annexes A, B, C, D, E, F, G, H, I, J and K, or to prepare a new annex with application rules for specific products, the required contents are listed below. For some elements or products, certain items might not be relevant. The purpose is to describe boundary, mounting and operating conditions for specific elements, products or groups of products.

- a) Application:
 - 1) definition of the element/product it applies to;
 - 2) quantities measured (if needed);
 - 3) reference to test method(s).
- b) Test element:
 - 1) size of the test opening and the test element;
 - 2) number of test elements.
- c) Boundary and mounting conditions (should be applied before installation):
 - 1) boundary conditions, e.g. filler wall, element boundaries;
 - 2) mounting positions;
 - 3) installation of the test element in the test opening.
- d) Test and operating conditions (should be applied after installation):
 - 1) operating conditions, e.g. open/close before test;
 - 2) conditioning/curing/drying;
 - 3) loading;
 - 4) environmental conditions.
- e) Test report.
- f) Additional information: if necessary, any information additional to the information that is required in basic ISO 10140-2 and ISO 10140-3.

Annex A (normative)

Walls — Airborne sound insulation

A.1 Application

For walls and other partitions, ISO 10140-2 applies. This annex applies to lightweight twin leaf partitions, such as those constructed of gypsum boards.

The quantity determined is the sound reduction index, R , as a function of frequency. The definition of R is given in ISO 10140-2.

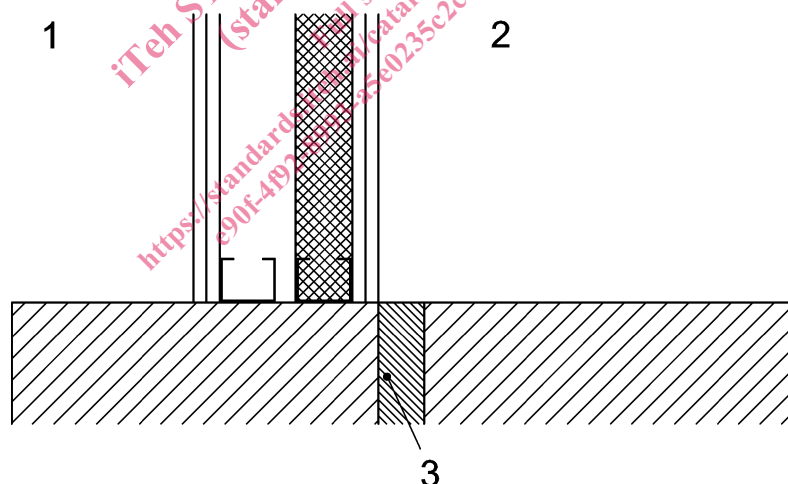
The general guidelines in the relevant clauses of the basic ISO 10140-2 shall always be followed.

A.2 Test element

The test opening for walls should be approximately 10 m².

A.3 Boundary and mounting conditions

The sound reduction index of lightweight twin leaf partitions (e.g. twin leaf gypsum board walls) is influenced by the mounting conditions in the test opening of the laboratory. Important installation parameters include the niche depth and the position of the partition in relation to the acoustic break in the test aperture.



Key

- 1 source room
- 2 receiving room
- 3 acoustic break of the laboratory

Figure A.1 — Example of the position of the test element relative to the acoustic break of the laboratory

To improve the reproducibility between laboratories and facilitate comparison of sound reduction indices for different lightweight double walls, the twin leaf partition shall not be mounted across the acoustic break of the laboratory, but on the same side of the break, as indicated in Figure A.1. The aperture should meet the requirements in ISO 10140-2.

Other mounting conditions may be used but shall be fully described in the test report.

NOTE 1 Mounting the lightweight partition with one leaf on one side and the other leaf on the other side of the acoustic break can result in higher values for the sound reduction index.

NOTE 2 Other mounting conditions can be suitable for certain types of twin leaf walls, for example walls for semi-detached houses where the leaves are vibrationally uncoupled (for example on separate foundations). In such cases, the wall leaves can be mounted on each side of the acoustic break.

A.4 Test and operating conditions

The test and operating conditions are given in ISO 10140-2.

A.5 Test report

The test report is given in ISO 10140-2.

iTeh STANDARD PREVIEW
(standards.iteh.ai)
Full standard:
<https://standards.iteh.ai/catalog/standards/sist/2dd8bed2-e90f-492-8993-a5e0235c2ca1/iso-10140-1-2016>

Annex B (normative)

Doors — Airborne sound insulation

B.1 Application

This annex applies to internal and external doors (including door sets).

The quantity determined is the sound reduction index, R , as a function of frequency. The definition of R is given in ISO 10140-2.

The general guidelines in the relevant clauses of the basic ISO 10140-2 shall always be followed.

NOTE For a definition of door, see ISO 1804 and EN 12519.

B.2 Test element

For most doors, a test opening with an area of less than 10 m² is needed. The area of the test element, S , is the area of the opening in the filler wall required to accommodate the door.

B.3 Boundary and mounting conditions

The test opening for doors shall be arranged such that the lower edge is situated near to the level of the floor of the test rooms and such that conditions in the building are reproduced. The door shall be installed for test such that it can be opened and closed in the normal manner.

B.4 Test and operating conditions

The door shall be opened and closed at least five times immediately before testing.

B.5 Test report

The test report is given in ISO 10140-2.