



SLOVENSKI STANDARD
SIST EN 31:2000
01-november-2000

BUXca Yý U
SIST EN 31:1998
SIST EN 31:1998/A1:1998

I a]j Ub]_]'!Df]_`4 bY'a YfY

Pedestal wash basins - Connecting dimensions

Bodenstehende Waschtische - Anschlußmaße

Lavabos sur pied - Cotes de raccordement

ITEH STANDARD PREVIEW
(standards.iteh.ai)

Ta slovenski standard je istoveten z: EN 31:1998
<http://standards.iteh.ai/catalog/standards/sist/2011/bc-8fd0-4651-b93a-9d797b1030ac/sist-en-31-2000>

ICS:

91.140.70 Sanitarne naprave Sanitary installations

SIST EN 31:2000 **en**

iTeh STANDARD PREVIEW
(standards.iteh.ai)

SIST EN 31:2000

<https://standards.iteh.ai/catalog/standards/sist/f29ed1bc-8fd0-4651-b93a-9d797b1030ac/sist-en-31-2000>

EUROPEAN STANDARD
NORME EUROPÉENNE
EUROPÄISCHE NORM

EN 31

November 1998

ICS 91.140.70

Supersedes EN 31:1998

Descriptors: sanitary appliances, pedestal wash-basins, dimensions, connecting dimensions

English version

Pedestal wash basins - Connecting dimensions

Lavabos sur pied - Cotes de raccordement

Bodenstehende Waschtische - Anschlußmaße

This European Standard was approved by CEN on 12 November 1998.

CEN members are bound to comply with the CEN/CENELEC Internal Regulations which stipulate the conditions for giving this European Standard the status of a national standard without any alteration. Up-to-date lists and bibliographical references concerning such national standards may be obtained on application to the Central Secretariat or to any CEN member.

This European Standard exists in three official versions (English, French, German). A version in any other language made by translation under the responsibility of a CEN member into its own language and notified to the Central Secretariat has the same status as the official versions.

CEN members are the national standards bodies of Austria, Belgium, Czech Republic, Denmark, Finland, France, Germany, Greece, Iceland, Ireland, Italy, Luxembourg, Netherlands, Norway, Portugal, Spain, Sweden, Switzerland and United Kingdom.

(standards.iteh.ai)

SIST EN 31:2000

<https://standards.iteh.ai/catalog/standards/sist/f29ed1bc-8fd0-4651-b93a-9d797b1030ac/sist-en-31-2000>



EUROPEAN COMMITTEE FOR STANDARDIZATION
COMITÉ EUROPÉEN DE NORMALISATION
EUROPÄISCHES KOMITEE FÜR NORMUNG

Central Secretariat: rue de Stassart, 36 B-1050 Brussels

Contents

	Page
Foreword	3
1 Scope	4
2 Connecting dimensions	4
2.1 Pedestal wash basin for three-hole fitting	4
2.2 Pedestal wash basin for single-hole fitting	6
3 Waste outlet hole	7
3.1 Waste outlet hole with overflow	7
3.2 Waste outlet hole without overflow	8

iTeh STANDARD PREVIEW
(standards.iteh.ai)

SIST EN 31:2000

<https://standards.iteh.ai/catalog/standards/sist/f29ed1bc-8fd0-4651-b93a-9d797b1030ac/sist-en-31-2000>



Foreword

This European Standard has been prepared by Technical Committee CEN/TC 163 "Sanitary appliances", the secretariat of which is held by UNI.

This European Standard replaces EN 31:1977.

This European Standard shall be given the status of a national standard, either by publication of an identical text or by endorsement, at the latest by May 1999, and conflicting national standards shall be withdrawn at the latest by May 1999.

This revised version considers new market trends and compared to the version of June 1989 includes the following amendments: Dimension g_5 and clause 3.2 are added.

According to the CEN/CENELEC Internal Regulations, the national standards organizations of the following countries are bound to implement this European Standard: Austria, Belgium, Czech Republic, Denmark, Finland, France, Germany, Greece, Iceland, Ireland, Italy, Luxembourg, Netherlands, Norway, Portugal, Spain, Sweden, Switzerland and the United Kingdom.

iTeh STANDARD PREVIEW (standards.iteh.ai)

SIST EN 31:2000

<https://standards.iteh.ai/catalog/standards/sist/f29ed1bc-8fd0-4651-b93a-9d797b1030ac/sist-en-31-2000>

1 Scope

This standard specifies the connecting dimensions of pedestal wash basins, regardless of the materials used for their manufacture.

This standard does not refer to appliances of actual width of less than 530 mm or more than 750 mm.

NOTE: Only dimensions are compulsory. The shape of the appliance in the figures is for illustration only; it in no way prejudices the final shape of the appliance which is left to the initiative of the manufacturer.

2 Connecting dimensions

2.1 Pedestal wash basin for three-hole fitting

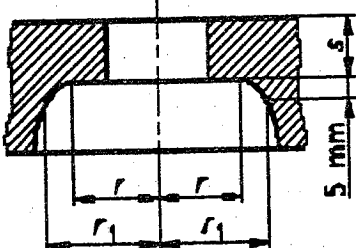
The connecting dimensions of pedestal wash basins for three-hole fittings shall comply with the dimensions given in table 1.

iTeh STANDARD PREVIEW
(standards.iteh.ai)

SIST EN 31:2000

<https://standards.iteh.ai/catalog/standards/sist/29ed1bc-8fd0-4651-b93a-9d797b1030ac/sist-en-31-2000>

Table 1: Connecting dimensions of pedestal wash basins for three-hole fittings (see figure 1)

Designation	Symbol	Dimensions mm	
Diameter of external holes	d_1	30^{+2}_0	
Diameter of central hole	d_2	35^{+2}_{-1}	
Distance from the centre line of the central hole and the central line of the two external holes	e	0 to 15	
Distance between the centre line of the two external holes	f	200 ± 4	
Horizontal distance between the centre line of the central hole and the edge of the bowl	g_1	≤ 80	
Shortest horizontal distance between the centre line of an external hole and the edge of the bowl	g_2	≤ 65	
Width of the flat plane of the tap platform from the centre line of the central hole to the back edge of the flat plane	g_4	≥ 32	
Distance from the centre line of the central hole to the backwall	g_5	≥ 55	
	<p>iTeh STANDARD PREVIEW (standards.it)</p> <p>https://standards.iteh.ai/catalog/standards/sist/f29ed1bc-8f30-4651-b93a-9d797b1030ac/sist-en-31-2000</p>	r	≥ 25
	Radius of a cylinder having the same centre line as the tap hole of a depth of min. 5 mm from the lower plane of the tap hole	r_1	≥ 30
	Thickness of the tap platform at the level of the zone concentric to the tap holes	s	≤ 18
Horizontal distance between the centre line of the central hole and the centre line of the waste outlet hole	t	≤ 170	

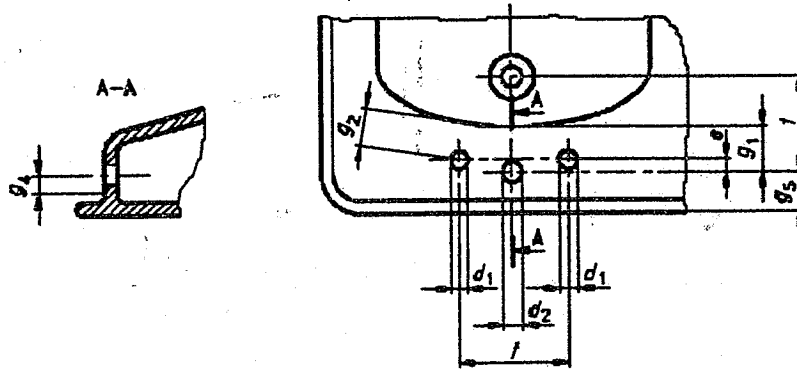
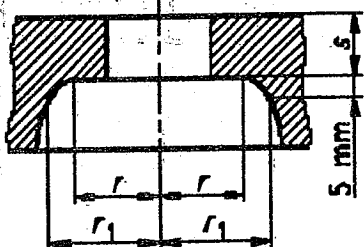


Figure 1: Pedestal wash basin for three-hole fitting

2.2 Pedestal wash basin for single-hole fitting

The connecting dimensions of pedestal wash basins for single-hole fittings shall comply with the dimensions given in table 2.

Table 2: Connecting dimensions of pedestal wash basins for single-hole fittings (see figure 2)

Designation	Symbol	Dimensions mm
Diameter of the tap hole	d_2	35^{+2}_{-1}
Horizontal distance between the centre line of the tap hole to the edge of the bowl	g_1	≤ 80
Width of the flat plane of the tap platform from the centre of the tap hole to the back edge of the flat plane	g_4	≥ 32
Distance from the centre line of the tap hole to the backwall	g_5	≥ 55
	Radius of a cylinder having the same centreline as the tap hole of a depth 0 to 5 mm from the lower plane of the tap hole	r ≥ 25
	Radius of a cylinder having the same centreline as the tap hole of a depth of min. 5 mm from the lower plane of the tap hole	r_1 ≥ 30
	Thickness of the tap platform at the level of the zone concentric to the tap hole	s ≤ 18
Horizontal distance between the centreline of the tap hole and the centreline of the waste outlet hole	t	≤ 170

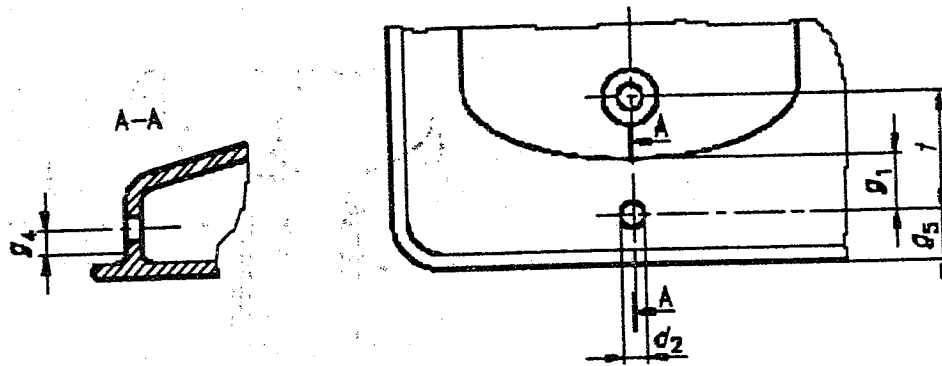


Figure 2: Pedestal wash basin for single-hole fitting

3 Waste outlet hole

3.1 Waste outlet hole with overflow

The connecting dimensions of a waste outlet hole with overflow shall comply with the dimensions given in table 3.

Table 3: Connecting dimensions of a waste outlet hole with overflow
(see figure 3)

Designation	Symbol	Dimensions mm
Bore of the waste outlet hole	d_3	46^{+2}_{-3}
Reference diameter	d_4	63
Diameter of the waste outlet hole	d_5	≤ 75
Diameter of the base for the seal between the waste outlet hole and the trap	d_6	≥ 60
Height for appliance with an overflow	h	45^{+5}_0
Distance between the reference diameter d_4 and the base for the seal	h_1	45_{-5}^0
Vertical distance between the tap platform and the underside of the waste outlet hole	p	≤ 250