



**SLOVENSKI STANDARD**  
**SIST EN 32:2000**

**01-november-2000**

**BUXca Yý U**  
**SIST EN 32:1998**  
**SIST EN 32:1998/A1:1998**

---

**NjXb]i a ]j Ub]\_]!'Df]\_`4 bY'a YfY**

Wall-hung wash basins - Connecting dimensions

Wandhängende Waschtische - Anschlußmaße

Lavabos suspendus - Cotes de raccordement

**ITEH STANDARD PREVIEW**  
**(standards.iteh.ai)**

**Ta slovenski standard je istoveten z: EN 32:1998**  
<http://standards.iteh.ai/catalog/standards/sist/925708cb-f0d4-43af-9342-32f52c3b286a/sist-en-32-2000>

---

**ICS:**

91.140.70      Sanitarne naprave      Sanitary installations

**SIST EN 32:2000**      **en**

**iTeh STANDARD PREVIEW**  
**(standards.iteh.ai)**

SIST EN 32:2000

<https://standards.iteh.ai/catalog/standards/sist/827a0bcb-f0d4-43af-9342-32f52c3b286a/sist-en-32-2000>

EUROPEAN STANDARD  
NORME EUROPÉENNE  
EUROPÄISCHE NORM

EN 32

November 1998

ICS 91.140.70

Supersedes EN 32:1998

Descriptors: sanitary appliances, pedestal wash-basins, suspended elements, dimensions, connecting dimensions

English version

## Wall-hung wash basins - Connecting dimensions

Lavabos suspendus - Cotes de raccordement

Wandhängende Waschtische - Anschlußmaße

This European Standard was approved by CEN on 12 November 1998.

CEN members are bound to comply with the CEN/CENELEC Internal Regulations which stipulate the conditions for giving this European Standard the status of a national standard without any alteration. Up-to-date lists and bibliographical references concerning such national standards may be obtained on application to the Central Secretariat or to any CEN member.

This European Standard exists in three official versions (English, French, German). A version in any other language made by translation under the responsibility of a CEN member into its own language and notified to the Central Secretariat has the same status as the official versions.

CEN members are the national standards bodies of Austria, Belgium, Czech Republic, Denmark, Finland, France, Germany, Greece, Iceland, Ireland, Italy, Luxembourg, Netherlands, Norway, Portugal, Spain, Sweden, Switzerland and United Kingdom.

(standards.iteh.ai)

SIST EN 32:2000

<https://standards.iteh.ai/catalog/standards/sist/827a0bcb-f0d4-43af-9342-32f52c3b286a/sist-en-32-2000>



EUROPEAN COMMITTEE FOR STANDARDIZATION  
COMITÉ EUROPÉEN DE NORMALISATION  
EUROPÄISCHES KOMITEE FÜR NORMUNG

Central Secretariat: rue de Stassart, 36 B-1050 Brussels

© 1998 CEN All rights of exploitation in any form and by any means reserved  
worldwide for CEN national Members.

Ref. No. EN 32:1998 E

## Contents

	Page
<b>Foreword</b> .....	<b>3</b>
<b>1 Scope</b> .....	<b>4</b>
<b>2 Connecting dimensions</b> .....	<b>4</b>
2.1 Wall-hung wash basin for three-hole fitting .....	4
2.2 Wall-hung wash basin for single-hole fitting .....	5
<b>3 Waste outlet hole</b> .....	<b>6</b>
3.1 Waste outlet hole with overflow .....	6
3.2 Waste outlet hole without overflow .....	7
<b>4 Fixing dimensions for wall-hung wash basins</b> .....	<b>8</b>

**iTeh STANDARD PREVIEW**  
(standards.iteh.ai)

SIST EN 32:2000

<https://standards.iteh.ai/catalog/standards/sist/827a0bcb-f0d4-43af-9342-32f52c3b286a/sist-en-32-2000>



## Foreword

This European Standard has been prepared by Technical Committee CEN/TC 163 "Sanitary appliances", the secretariat of which is held by UNI.

This European Standard replaces EN 32:1977.

This European Standard shall be given the status of a national standard, either by publication of an identical text or by endorsement, at the latest by May 1999, and conflicting national standards shall be withdrawn at the latest by May 1999.

This revised version considers new market trends and compared to the version of June 1989 includes the following amendments: Dimension  $g_5$  and clause 3.2 have been added.

According to the CEN/CENELEC Internal Regulations, the national standards organizations of the following countries are bound to implement this European Standard: Austria, Belgium, Czech Republic, Denmark, Finland, France, Germany, Greece, Iceland, Ireland, Italy, Luxembourg, Netherlands, Norway, Portugal, Spain, Sweden, Switzerland and the United Kingdom.

## iTeh STANDARD PREVIEW (standards.iteh.ai)

SIST EN 32:2000

<https://standards.iteh.ai/catalog/standards/sist/827a0bcb-f0d4-43af-9342-32f52c3b286a/sist-en-32-2000>

## 1 Scope

This standard specifies the connecting dimensions of wall-hung wash basins, regardless of the materials used for their manufacture.

This standard does not apply to appliances of actual width of less than 530 mm or more than 750 mm.

NOTE: Only dimensions are compulsory. The shape of the appliance in the figures is for illustration only; it in no way prejudices the final shape of the appliance which is left to the initiative of the manufacturer.

## 2 Connecting dimensions

### 2.1 Wall-hung wash basin for three-hole fitting

The connecting dimensions of wall-hung wash basins or three-hole fittings shall comply with the dimensions given in table 1.

**Table 1: Connecting dimensions of wall-hung wash basin for three-hole fittings (see Figure 1)**

Designation	Symbol	Dimensions mm	
Diameter of external holes	$d_1$	$30^{+2}_0$	
Diameter of central hole	$d_2$	$35^{+2}_{-1}$	
Distance from the centre line of the central hole to the centre line of the two external holes	$e$	0 to 15	
Distance between the centre line of the two external holes	$f$	$200 \pm 4$	
Horizontal distance between the centre line of the central hole and the edge of the bowl	$g_1$	$\leq 80$	
Shortest horizontal distance between the centre line of an external hole and the edge of the bowl	$g_2$	$\leq 65$	
Width of the flat plane of the tap platform from the centre line of the central hole to the back edge of the flat plane	$g_4$	$\geq 32$	
Distance from the centre line of the central hole to the backwall	$g_5$	$\geq 55$	
	Radius of a cylinder having the same centre line as the tap hole of a depth 0 mm to 5 mm from the lower plane of the tap	$r$	$\geq 25$
	Radius of a cylinder having the same centre line as the tap hole of a depth of min. 5 mm from the lower plane of the tap hole	$r_1$	$\geq 30$
	Thickness of the tap platform at the level of the zone concentric to the tap holes	$s$	$\leq 18$
Horizontal distance between the centre line of the central hole and the centre line of the waste outlet hole	$t$	$\leq 170$	

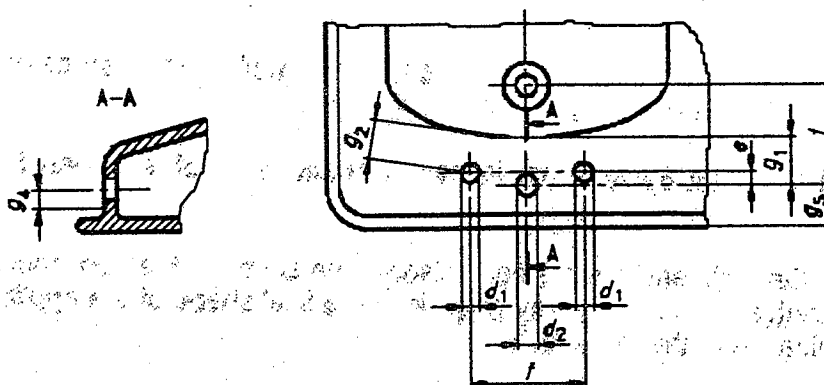


Figure 1: Wall-hung wash basin for three-hole fitting

## 2.2 Wall-hung wash basin for single-hole fitting

The connecting dimensions of wall-hung wash basins for single-hole fittings shall comply with the dimensions given in table 2.

Table 2: Connecting dimensions of wall-hung wash basins for single-hole fittings (see figure 2)

Designation	Symbol	Dimensions mm	
Diameter of tap hole <a href="https://standards.iteh.ai/catalog/standards/sist/827a0bcb-f0d4-43af-9342">https://standards.iteh.ai/catalog/standards/sist/827a0bcb-f0d4-43af-9342</a>	$d_2$	$35^{+2}_{-1}$	
Horizontal distance between the centre line of the tap hole to the edge of the bowl	$g_1$	$\leq 80$	
Width of the flat plane of the tap platform from the centre of the tap hole to the back edge of the flat plane	$g_3$	$\geq 32$	
Distance from the centre line of the tap hole to the backwall	$g_4$	$\geq 55$	
	Radius of a cylinder having the same centre line as the tap hole of a depth 0 mm to 5 mm from the lower plane of the tap hole	$\geq 25$	
	Radius of a cylinder having the same centre line as the tap hole of a depth of min. 5 mm from the lower plane of the tap hole	$r_1$	$\geq 30$
	Thickness of the tap platform at the level of the zone concentric to the tap hole	$s$	$\leq 18$
Horizontal distance between the centre line of the tap hole and the centre line of the waste outlet hole	$t$	$\leq 170$	



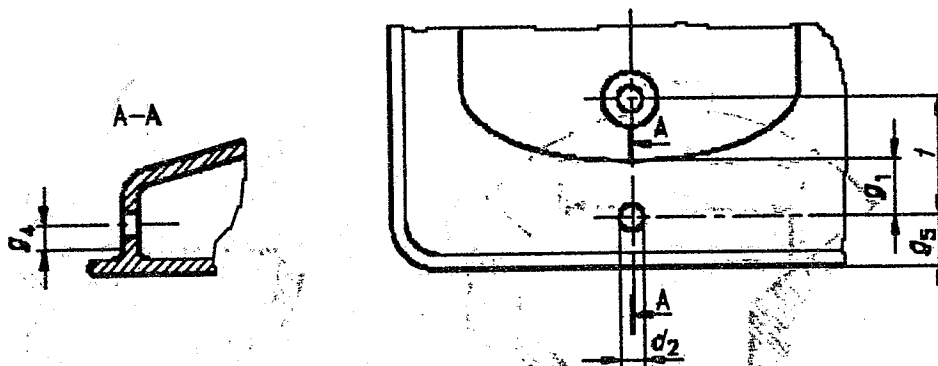


Figure 2: Wall-hung wash basin for single-hole fitting

### 3 Waste outlet hole

#### 3.1 Waste outlet hole with overflow

The connecting dimensions of a waste outlet hole with overflow shall comply with the dimensions given in table 3.

Table 3: Connecting dimensions of a waste outlet hole with overflow (see figure 3)

Designation	Symbol	Dimensions mm
Bore of the waste outlet hole	$d_3$	$46 \begin{smallmatrix} +2 \\ -3 \end{smallmatrix}$
Reference diameter	$d_4$	63
Diameter of the waste outlet hole	$d_5$	$\leq 75$
Diameter of the base for the seal between the waste outlet hole and the trap	$d_6$	$\geq 60$
Height for appliance with an overflow	$h$	$45 \begin{smallmatrix} +5 \\ 0 \end{smallmatrix}$
Distance between the reference diameter $d_4$ and the base for the seal	$h_1$	$45 \begin{smallmatrix} 0 \\ -5 \end{smallmatrix}$
Vertical distance between the tap platform and the underside of the waste outlet hole	$p$	$\leq 250$



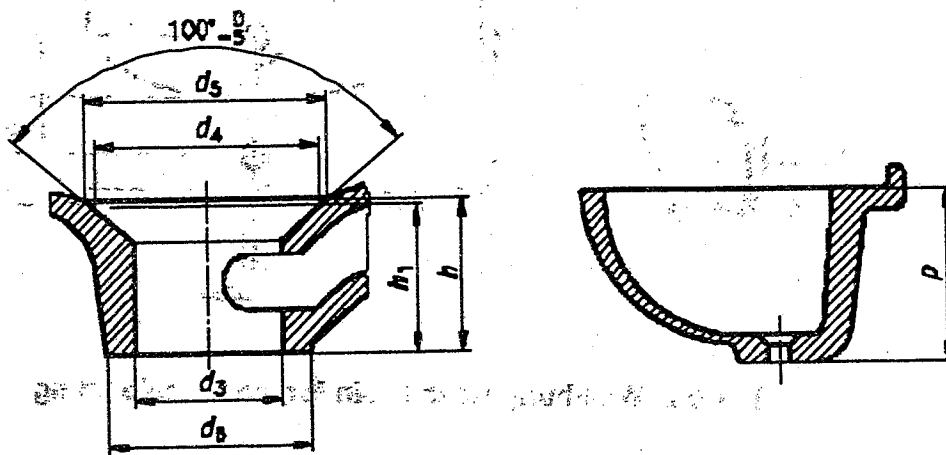


Figure 3: Waste outlet hole with overflow

### 3.2 Waste outlet hole without overflow

The connecting dimensions of a waste outlet hole without overflow shall comply with the dimensions given in table 4.

Table 4: Connecting dimensions of a waste outlet hole without overflow  
(see figure 4)

Designation	Symbol	Dimension mm
Bore of the waste outlet hole	$d_3$	$46^{+2}_{-3}$
Reference diameter	$d_4$	63
Diameter of the waste outlet hole	$d_5$	$\leq 75$
Height for appliance without overflow	$h$	$20^{+5}_0$
Distance between the reference diameter $d_4$ and the base for the seal	$h_1$	$20^{+0}_{-5}$
Sealing surface for the waste fitting	$s$	$\geq 3$

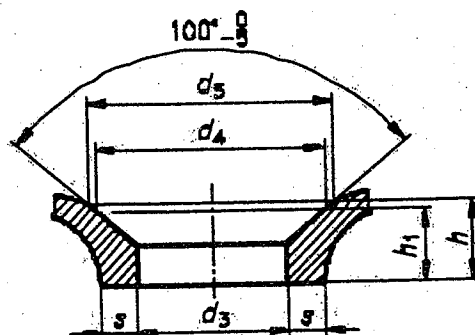


Figure 4: Waste outlet hole without overflow