



SLOVENSKI STANDARD

SIST EN 14734:2022

01-september-2022

Trajnost lesa in lesnih proizvodov - Ugotavljanje možnosti za impregnacijo lesnih vrst z biocidnimi proizvodi za zaščito lesa - Laboratorijska metoda

Durability of wood and wood-based products - Determination of treatability of timber species to be impregnated with wood preservatives - Laboratory method

Dauerhaftigkeit von Holz und Holzprodukten - Bestimmung der Tränkbarkeit von Holzarten zur Tränkung mit Holzschutzmitteln - Laborverfahren

Durabilité du bois et des matériaux dérivés du bois - Détermination de l'imprégnabilité d'essences de bois par des produits de préservation - Méthode de laboratoire

Ta slovenski standard je istoveten z: EN 14734:2022

ICS:

71.100.50	Kemikalije za zaščito lesa	Wood-protecting chemicals
79.040	Les, hlodovina in žagan les	Wood, sawlogs and sawn timber

SIST EN 14734:2022

en,fr,de

EUROPEAN STANDARD

EN 14734

NORME EUROPÉENNE

EUROPÄISCHE NORM

June 2022

ICS 79.040

Supersedes CEN/TR 14734:2004

English Version

Durability of wood and wood-based products - Determination of treatability of timber species to be impregnated with wood preservatives - Laboratory method

Durabilité du bois et des matériaux dérivés du bois -
Détermination de l'imprégnabilité d'essences de bois
par des produits de préservation - Méthode de
laboratoire

Dauerhaftigkeit von Holz und Holzprodukten -
Bestimmung der Tränkbarkeit von Holzarten zur
Tränkung mit Holzschutzmitteln - Laborverfahren

This European Standard was approved by CEN on 20 April 2022.

CEN members are bound to comply with the CEN/CENELEC Internal Regulations which stipulate the conditions for giving this European Standard the status of a national standard without any alteration. Up-to-date lists and bibliographical references concerning such national standards may be obtained on application to the CEN-CENELEC Management Centre or to any CEN member.

This European Standard exists in three official versions (English, French, German). A version in any other language made by translation under the responsibility of a CEN member into its own language and notified to the CEN-CENELEC Management Centre has the same status as the official versions.

CEN members are the national standards bodies of Austria, Belgium, Bulgaria, Croatia, Cyprus, Czech Republic, Denmark, Estonia, Finland, France, Germany, Greece, Hungary, Iceland, Ireland, Italy, Latvia, Lithuania, Luxembourg, Malta, Netherlands, Norway, Poland, Portugal, Republic of North Macedonia, Romania, Serbia, Slovakia, Slovenia, Spain, Sweden, Switzerland, Turkey and United Kingdom.



EUROPEAN COMMITTEE FOR STANDARDIZATION
COMITÉ EUROPÉEN DE NORMALISATION
EUROPÄISCHES KOMITEE FÜR NORMUNG

CEN-CENELEC Management Centre: Rue de la Science 23, B-1040 Brussels

Contents	Page
European foreword.....	3
Introduction	4
1 Scope.....	5
2 Normative references.....	5
3 Terms and definitions	5
4 Principle	5
5 Reagents	5
5.1 Copper sulfate pentahydrate, at least 98 % pure, solution of 50 g/kg.....	5
5.2 Indicator solution.....	5
5.3 Sealing compound.....	5
6 Apparatus.....	6
7 Preparation of test specimens.....	7
8 Procedure.....	7
8.1 Moisture content and density determination.....	7
8.2 Impregnation of test specimens (standard procedure).....	7
8.3 Measurement of penetration	8
9 Data handling.....	9
9.1 Treatability classes for individual test samples	9
9.2 Differentiation between treatability classes 3 and 4	10
9.3 Assignment of a treatability class to a set of specimens	10
10 Test report.....	11
Annex A (informative) Guidance on sampling.....	12
A.1 General.....	12
A.2 Origin of the material	12
A.3 Homogeneity of the sample	12
A.4 Heartwood	12
A.5 Saw pattern	13
A.6 Seasoning	13
A.7 Grading.....	13
Annex B (informative) Example of a test report	14
Bibliography.....	16

European foreword

This document (EN 14734:2022) has been prepared by Technical Committee CEN/TC 38 “Durability of wood and wood-based products”, the secretariat of which is held by AFNOR.

This European Standard shall be given the status of a national standard, either by publication of an identical text or by endorsement, at the latest by December 2022, and conflicting national standards shall be withdrawn at the latest by December 2022.

Attention is drawn to the possibility that some of the elements of this document may be the subject of patent rights. CEN shall not be held responsible for identifying any or all such patent rights.

This document supersedes CEN/TR 14734:2004.

Any feedback and questions on this document should be directed to the users’ national standards body. A complete listing of these bodies can be found on the CEN website.

According to the CEN-CENELEC Internal Regulations, the national standards organisations of the following countries are bound to implement this European Standard: Austria, Belgium, Bulgaria, Croatia, Cyprus, Czech Republic, Denmark, Estonia, Finland, France, Germany, Greece, Hungary, Iceland, Ireland, Italy, Latvia, Lithuania, Luxembourg, Malta, Netherlands, Norway, Poland, Portugal, Republic of North Macedonia, Romania, Serbia, Slovakia, Slovenia, Spain, Sweden, Switzerland, Turkey and the United Kingdom.

iTeh STANDARD PREVIEW
(standards.iteh.ai)

SIST EN 14734:2022

<https://standards.iteh.ai/catalog/standards/sist/ebd68cc6-0fa5-4711-a675-0bd16b81b7b2/sist-en-14734-2022>

EN 14734:2022 (E)**Introduction**

The basis for this document was prepared as being part of the work for SMT project MAT-CT 94061 project number 3307: Improvement of CEN standards by short term methods for testing the natural durability and treatability of solid wood and wood based panel products.

It provides the means whereby the treatability of sapwood or heartwood of different wood species can be determined in order to determine likely reaction to impregnation with wood preservatives. Such an assessment provides data for use in EN 351-1 which establishes a system for specifying the treatment of wood with wood preservatives based upon the penetration and retention of preservatives achieved by the treatment process. EN 351-1 recognizes that different wood species respond to treatment differently depending on their ability to absorb preservative, and requires a different level of compliance depending on the treatability of the wood concerned. While EN 350 includes a subjective classification of the treatability of different wood species using a four class system, the method described in this document provides the means to determine the treatability objectively.

Although the method described uses an aqueous solution as the impregnating liquid, the method can be modified using other preservative types, e.g. organic solvent or emulsion preparations, if the response of the wood to a specific preservative is required. However, the method does not take account of preservative formulations where the active ingredients are selectively adsorbed on to the wood substrate resulting in the solvent penetrating more deeply than the biocides.

iTeh STANDARD PREVIEW
(standards.iteh.ai)

SIST EN 14734:2022

<https://standards.iteh.ai/catalog/standards/sist/ebd68cc6-0fa5-4711-a675-0bd16b81b7b2/sist-en-14734-2022>

1 Scope

This document specifies a laboratory method for the determination of the treatability of wood in order to determine the likely reaction of different wood species to impregnation with wood preservatives. It is also applicable to investigate variation between samples of the same species but of different origin.

2 Normative references

There are no normative references in this document.

3 Terms and definitions

No terms and definitions are listed in this document.

ISO and IEC maintain terminological databases for use in standardization at the following addresses:

— ISO Online browsing platform: available at <https://www.iso.org/obp>

— IEC Electropedia: available at <https://www.electropedia.org/>

4 Principle

After moisture and density determination of each of the test specimens, a set of test specimens is impregnated with copper sulfate solution in accordance with a standard test procedure. After application of an indicator solution to the exposed cross-section and to one of the exposed longitudinal surfaces of each of test specimens, the lateral and axial penetration is measured and the treatability class is evaluated.

5 Reagents

5.1 Copper sulfate pentahydrate, at least 98 % pure, solution of 50 g/kg

Dissolve 50 g of copper sulfate pentahydrate ($\text{CuSO}_4 \cdot 5\text{H}_2\text{O}$) in 950 g water, preferably deionized.

NOTE The volume of copper sulfate solution required will depend on the capacity of the impregnation apparatus.

5.2 Indicator solution

For the indication of the penetration an indicator solution, e.g. chrome azurol S, can be used. Dissolve 0,5 g chrome azurol S and 5 g sodium acetate in 100 ml water.

Other indicators can be used but should have at least the same sensitivity to copper as chrome azurol S.

5.3 Sealing compound

A sealing compound which is inert to the copper sulfate solution (5.1) and unaffected by the test conditions.

EN 14734:2022 (E)

6 Apparatus

Ordinary laboratory apparatus and:

6.1 Balance, capable of weighing with maximum permissible error of 0,01 g.

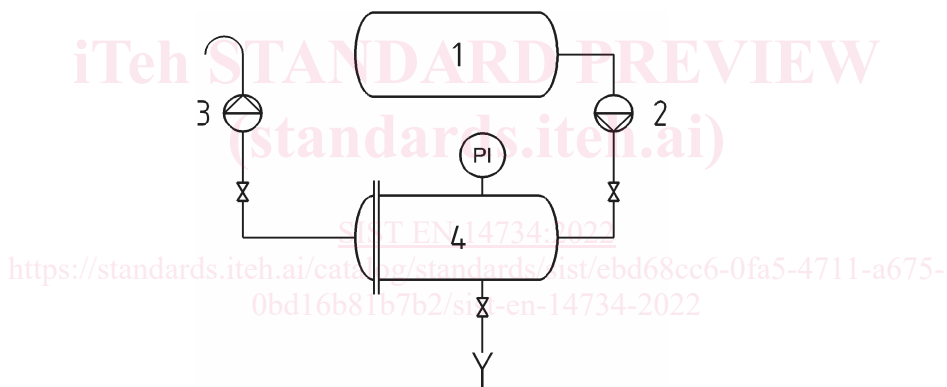
6.2 Conditioning chamber, well ventilated and controlled at $(20 \pm 2) ^\circ\text{C}$ and $(65 \pm 5) \%$ relative humidity.

6.3 Measuring devices, capable of measuring the dimensions of test sample size of up to 40 mm and 1000 mm, respectively, and to a maximum uncertainty of measurement of 0,1 mm.

6.4 Drying oven, capable of being controlled at $(103 \pm 2) ^\circ\text{C}$.

6.5 Desiccator, with efficient desiccant (silica gel for example).

6.6 Treatment vessel, consisting of a chamber and header tank with ancillary vacuum and pressure pumps capable of exerting a vacuum of $(1 \pm 0,5) \text{ kPa}$ and a pressure of $(10 \pm 1) \times 10^2 \text{ kPa}$. The pipe work between the treatment vessel and the pumps shall be designed so that adding or draining treatment solutions can be achieved while maintaining the existing pressure in the vessel. A typical treatment vessel with connected pumps and storage tank is shown in Figure 1.



Key

- 1 storage tank
- 2 pump
- 3 vacuum pump
- 4 treatment vessel (chamber)
- PI pressure gauge

Figure 1 — Typical treatment vessel (with connected pumps and storage tank)

7 Preparation of test specimens

Prepare a minimum of ten test specimens, each from a different plank of the wood species under test (see also 8.2). The test specimens shall be characterized and marked appropriately so that a distinguishment between heartwood and sapwood zones are made. The wood shall be sound, straight-grained and without knots and the visible features of the wood shall be given for example: resin pockets, cross-grain, widths of annual rings and proportion of latewood. At the time of test, the moisture content of the test specimens shall be between 13 % and 18 %.

NOTE It is important that the timber tested is representative of the population from which it comes. Guidance on the sampling of timber is provided in Annex A.

20 test specimens should be used to take into account variability between specimens.

From each plank, prepare a strip having a length of at least 800 mm and a cross-section of $(40 \pm 0,3) \text{ mm} \times (40 \pm 0,3) \text{ mm}$. When the sapwood zone is less than 40 mm wide it can be necessary to limit the cross-section of each strip. The lateral surfaces shall be planed and shall be true radial and tangential surfaces. Cross cut 15 mm to 20 mm from one end and discard. Cross cut a $(10 \pm 0,1) \text{ mm}$ long sample from the same end, for moisture content and density determination (see 8.1). Trim the other end of the remaining length to give a test specimen $(750 \pm 1) \text{ mm}$ long for impregnation. Number both test specimens so as to retain the identity of the plank. Apply the sealing compound (5.3) to one cross-section end of each test specimen for impregnation and allow to set. Inspect the end seal to ensure that it completely covers the end grain and apply a second coat if required.

It is recommended that neither dimension of the cross-section is less than 20 mm.

8 Procedure

8.1 Moisture content and density determination

Weigh each test specimen for moisture content determination to the nearest 0,01 g using the balance (6.1), to determine the initial mass (m_0). Transfer the test specimens to the drying oven (6.4). Dry the test specimens for 18 h to 24 h at $(103 \pm 2) \text{ }^\circ\text{C}$, cool to room temperature in a desiccator (6.5), weigh each test specimen to the nearest 0,01 g and record the final mass (m_1). Calculate the moisture content of each test specimen by expressing the water content ($m_0 - m_1$) as a percentage of the dry mass (m_1). Calculate the density of each test specimen, expressed as kilograms per cubic metre, using the oven dry mass (m_1) and the measured volume.

8.2 Impregnation of test specimens (standard procedure)

Place the test specimens in the treatment vessel (6.6) in such a way that they do not touch each other and that they do not float when the vessel is filled with the copper sulfate solution (5.1).

NOTE 1 A suitable arrangement can be achieved by separating the stacked test specimens with small sticks and either tying down the test specimens or placing weights on the top of the stack.

Seal the treatment vessel and by means of the vacuum pump, reduce the pressure to $(1,0 \pm 0,5) \text{ kPa}$. Maintain this vacuum for 45 min. Then, with the vacuum pump running, introduce the copper sulfate solution (5.1) so that the treatment vessel and the header tank are completely filled. Release the vacuum so that the pressure in the vessel returns to atmospheric pressure. Apply a pressure of $(10 \pm 1) \times 10^2 \text{ kPa}$ and maintain for 120 min. Release the pressure so that the treatment vessel returns to atmospheric pressure. Drain the copper sulfate solution from the chamber.

Remove the test specimens from the vessel and stack in a well-ventilated area to allow drying to take place. Allow to dry for at least 24 h or until the moisture content of the test specimens is below the fibre saturation point.

NOTE 2 A moisture meter of the two-pronged electrical conductivity type is suitable for this purpose.

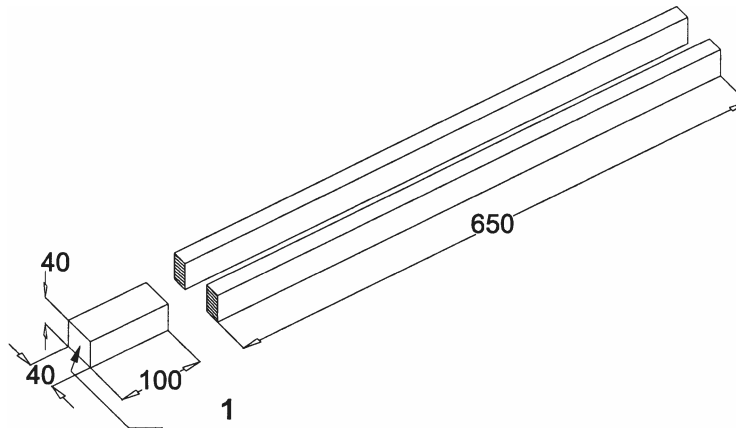
EN 14734:2022 (E)

8.3 Measurement of penetration

Cut each test specimen according to the pattern given in Figure 2, using equipment which provides a fine-sawn finish. The sample is to be split in half in longitudinal direction and the exposed cross section and the exposed longitudinal surface should be labelled as such.

The cutting should be in the radial plane and should be from the end that was nearest the end seal.

Dimensions in millimetres



Key

1 end-sealed cross-section

Figure 2 — Cutting of the samples

Apply the indicator solution (5.2) to the exposed cross-section (see Figure 2) of each test specimen using either a spray technique or a paint brush. Similarly apply the reagent to one of the exposed longitudinal surfaces (see Figure 2) of each test specimen.

NOTE The wood penetrated by the copper sulfate solution will become deep blue if chrome azurol S is used: the remainder will be coloured red.

When the reagent has dried enough for the specimens to be handled, measure both the minimum and average lateral penetration and the minimum axial penetration of the copper sulfate solution into the test specimens.

Measure the lateral penetration at the centre and approximately 10 mm either side of the centre of each radial and tangential edge of the exposed cross-section (see Figure 3). If the penetration does not exceed 10 mm at any point, calculate the mean of all the values and record as the average lateral penetration. If the penetration exceeds 10 mm at any point, calculate the average lateral penetration using only the readings taken at the centre of each edge and indicate the method of calculation in the test report. Additionally, measure the minimum penetration achieved at any point on the cross-section.

Measure the minimum axial penetration which is the distance from the unsealed end to which the copper sulfate solution has penetrated across the complete width of the exposed surface (d in Figure 4).